

**DIAMOND**  
**PRODUCTS**  
**SPECIALTY EQUIPMENT**  
**MANUFACTURING DIVISION**

Hydraulic Hand Saw

Flush Cut

Parts List

Models:

**Lightweight Series**

(May 2010)

Part #1805084



## **Table of Contents**

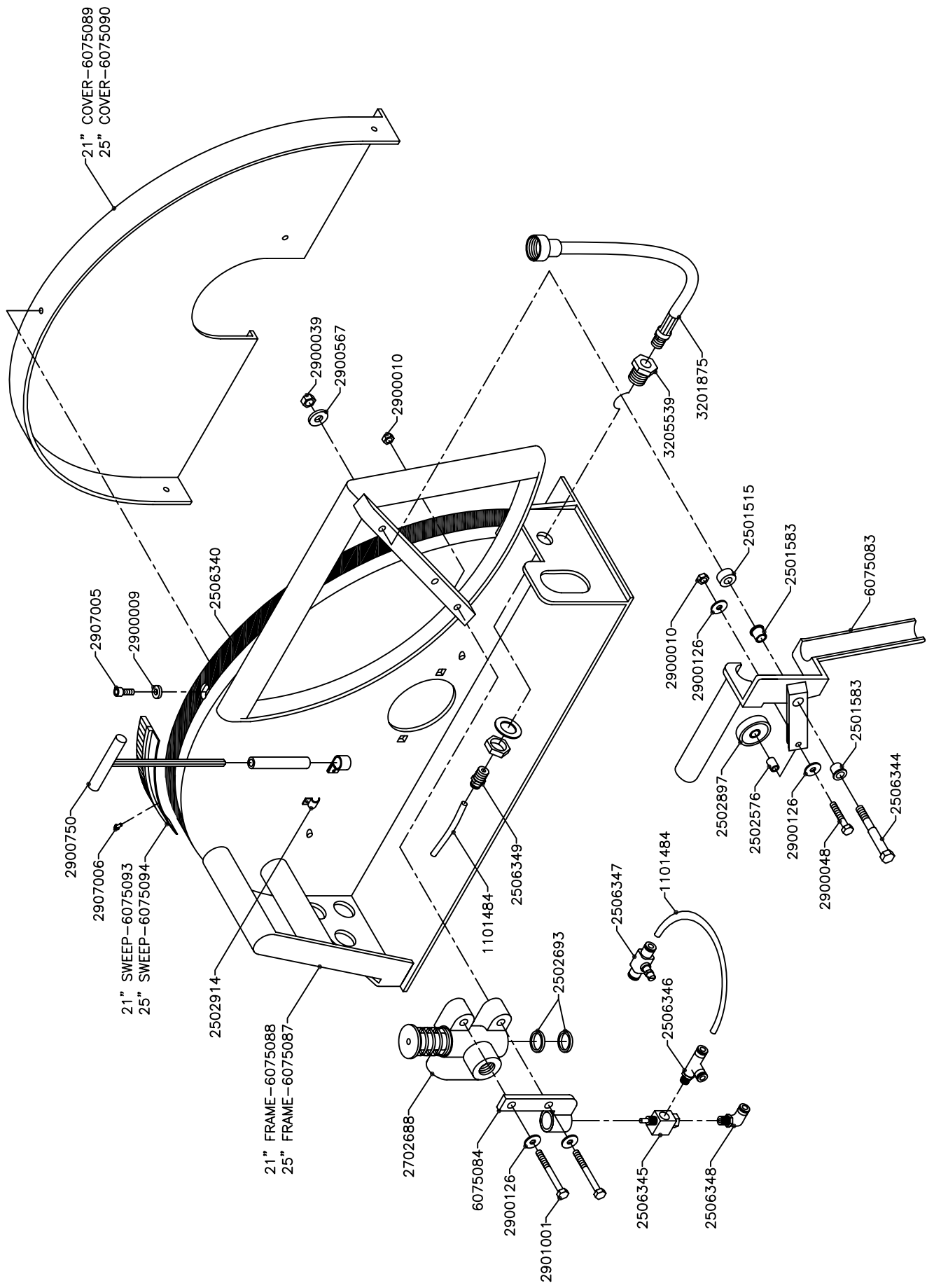
Flush Cut Hand Saw Assembly	4
Motor Assemblies	6
Warranty	8

This manual covers the following products:

5800860	8 GPM Lightweight Flush Cut Hand Saw with Cover
5800861	10 GPM Lightweight Flush Cut Hand Saw with Cover
5800862	12 GPM Lightweight Flush Cut Hand Saw with Cover
5800863	15 GPM Lightweight Flush Cut Hand Saw with Cover

## Flush Cut Hand Saw Assembly

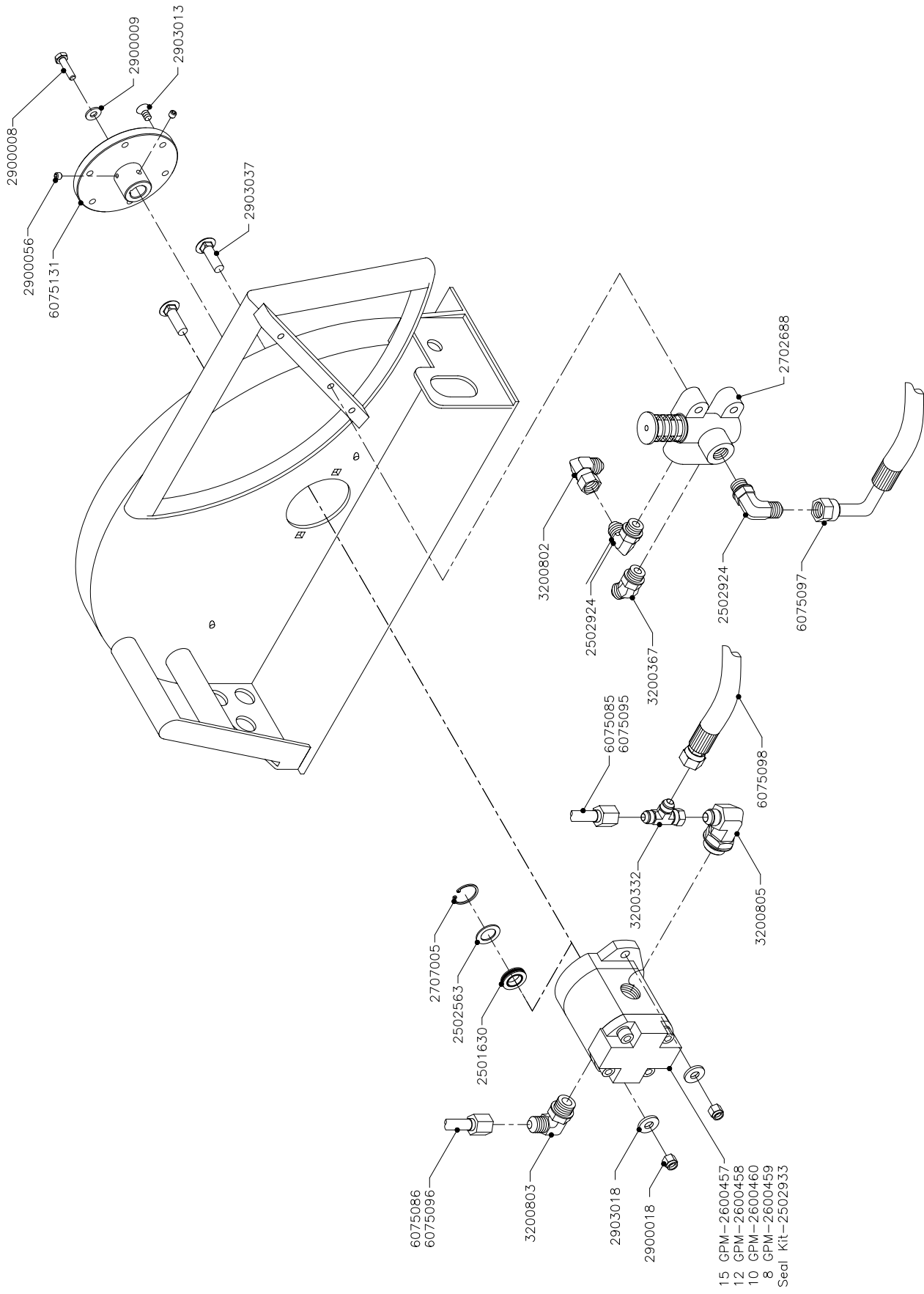
<u>Part No.</u>	<u>Qty.</u>	<u>Description</u>
6075088	1	21" Hand Saw Frame
6075087	1	25" Hand Saw Frame
6075089	1	21" Hand Saw Cover
6075090	1	25" Hand Saw Cover
6075093	1	21" Flush Cut Brush
6075094	1	25" Flush Cut Brush
2702688	1	Metro Valve, 1/2"
6075084	1	Valve Cap
2900126	4	Flat Washer, 1/4"
2901001	2	Cap Screw, Hex Hd., 1/4-20 x 2-1/2"
2506345	1	3-Way Poppet Valve
2506348	1	Fitting, Push Quick, 1/8" 90° Elbow
2506346	1	Fitting, Push Quick, 1/8" Run Tee
2506347	2	Fitting, Push Quick, 1/8" Flow Control
1101484	Per Foot	Tube, 1/4" OD Plastic Water
2502693	2	Replacement Quad Seals
2506349	1	Fitting, Push Quick, 1/4"
3205539	1	Fitting, Bulk Head Coupler, 1/4" NPT
3201875	1	Hose Assembly
6075083	1	Double Trigger
2501583	2	Brass Flange Bushing, 1/2" X 3/8"
2501515	1	UHMW Bushing, 3/4" X 3/8"
2900010	3	Lock Nut, 1/4-20
2502897	1	Radial Bearing, 1/2" OD x 1-1/2" ID x 11mm
2502576	1	Brass Sleeve Bushing, 1/2" X 1/4"
2900048	1	Cap Screw, Hex Hd., 1/4-20 x 1-1/2"
2506344	1	Pivot Bolt, 3/8" x 1/4-20 Thread
2502914	3	Tubing Clamp
2907006	8	Machine Screw, #6-32 x 1/4"
2900750	1	T-Handle Hex Key 3/16"
2907005	3	Cap Screw, Soc. Hd., 1/4-20 x 5/8"
2900009	3	Flat Washer, 1/4" SAE
2506340	Per Foot	1/2" VHB Foam Tape
2900039	1	Lock Nut, 5/16-18
2900567	1	Flat Washer, 5/16"



# Flush Cut Hand Saw Assembly

## Motor Assemblies

<u>Part No.</u>	<u>Qty.</u>	<u>Description</u>
2600457	1	Motor, Casappa, 1.57 CI,15 GPM
2600458	1	Motor, Casappa, 1.27 CI,12 GPM
2600459	1	Motor, Casappa, 0.87 CI,8 GPM
2600460	1	Motor, Casappa, 1.01 CI,10 GPM
2502933	1	Motor Seal Kit
2900018	2	Lock Nut, 3/8-16
2903018	2	Flat Washer, 3/8"
3200803	1	Fitting, 5/8" O-Ring x 1/2" M. JIC
3200805	1	Fitting, 3/4" O-Ring to 1/2" M. JIC, 90°
3200332	1	Fitting, Run Tee, 1/2" M. JIC
6075098	1	Return Hose Assembly
6075085	1	21" Frame Rear Tube Assembly
6075086	1	21" Frame Front Tube Assembly
6075095	1	25" Frame Rear Tube Assembly
6075096	1	25" Frame Front Tube Assembly
2503336	1	Key, 5/32" Sq. x 5/8"
2501630	1	Shaft Seal
2502563	1	Backing Ring
2707005	1	Snap Ring
6075131	1	Blade Hub
2900056	2	Set Screw, Soc. Hd., 1/4-20 x 1/4"
2900008	1	Cap Screw, Soc. Hd., 1/4-20 x 1"
2900009	1	Flat Washer, 1/4"
2903013	6	Cap Screw, Soc. Hd. Flat, 5/16-18 x 5/8"
2903037	2	Carrige Bolt, 3/8-16 x 1-1/4"
2702688	1	Metro Valve Assembly
3200802	1	Fitting, 1/2" M. JIC x 1/2" F. JIC 90°
2502924	2	Fitting, 1/2" O-Ring to 1/2" M. JIC 90°
3200367	1	Fitting, 1/2" O-Ring to 1/2" M. JIC 45°
6075097	1	Pressure Hose Assembly



## **Motor Assemblies**

## **EQUIPMENT AND PARTS WARRANTY**

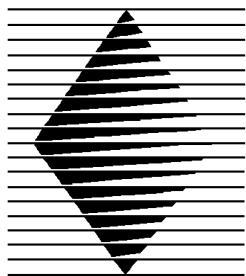
Diamond Products warrants all equipment manufactured by it against defects in workmanship or materials for a period of one (1) year from the date of shipment to Customer.

The responsibility of Diamond Products under this Warranty is limited to replacement or repair of defective parts at Diamond Products' Elyria, Ohio factory, or at a point designated by it, of such parts as shall appear to us upon inspection at such parts, to have been defective in material or workmanship, with expense for transportation and labor borne by Customer.

In no event shall Diamond Products be liable for consequential or incidental damages arising out of the failure of any Product to operate properly.

Integral units such as engines, electric motors, batteries, transmissions, etc., are excluded from this Warranty and are subject to the prime manufacturer's warranty.

**THIS WARRANTY IS IN LIEU OF ALL OTHER WARRANTIES, EXPRESSED OR IMPLIED, AND ALL SUCH OTHER WARRANTIES ARE HEREBY DISCLAIMED.**



# **DIAMOND PRODUCTS**

333 Prospect Street, Elyria, Ohio 44035  
(440) 323-4616 • (800) 321-5336 • Fax (440) 323-8689  
[www.diamondproducts.com](http://www.diamondproducts.com)