

DIAMOND PRODUCTS

7" PLANETARY GRINDER / POLISHER PARTS LIST

MODEL DS301

(05-25-07)

PART#: 1801003

Intentionally Blank

DS301 OPERATING INSTRUCTIONS

Warning: When using coolant, always use an outlet with a ground fault circuit interrupter (GFCI).

1. Set the unit on its side and rotate the platens by hand to check for rotation.
2. Apply the desired abrasive system to the platens.
3. Plug power cord into 110V, 60Hz, 20 Amp GFCI outlet.
4. Set speed control to "6" on the back of the unit.
5. Turn on switch. The planets will rotate at 2250 RPM. Most diamond tools will perform best at this speed.
6. ***Do not operate the unit below speed 4 - the tool will overheat.***
7. **Do not** use silicon carbide grinding stones or diamond cup wheels that weigh over 1 lb.
8. **Do not** push the locking button on the Fein power unit during operation.

Driver Speed	Platform Speed	Platen Speed
<i>1</i>	<i>150 RPM</i>	<i>750 RPM</i>
<i>2</i>	<i>210 RPM</i>	<i>1050 RPM</i>
<i>3</i>	<i>270 RPM</i>	<i>1350 RPM</i>
4	330 RPM	1650 RPM
5	390 RPM	1950 RPM
6	450 RPM	2250 RPM

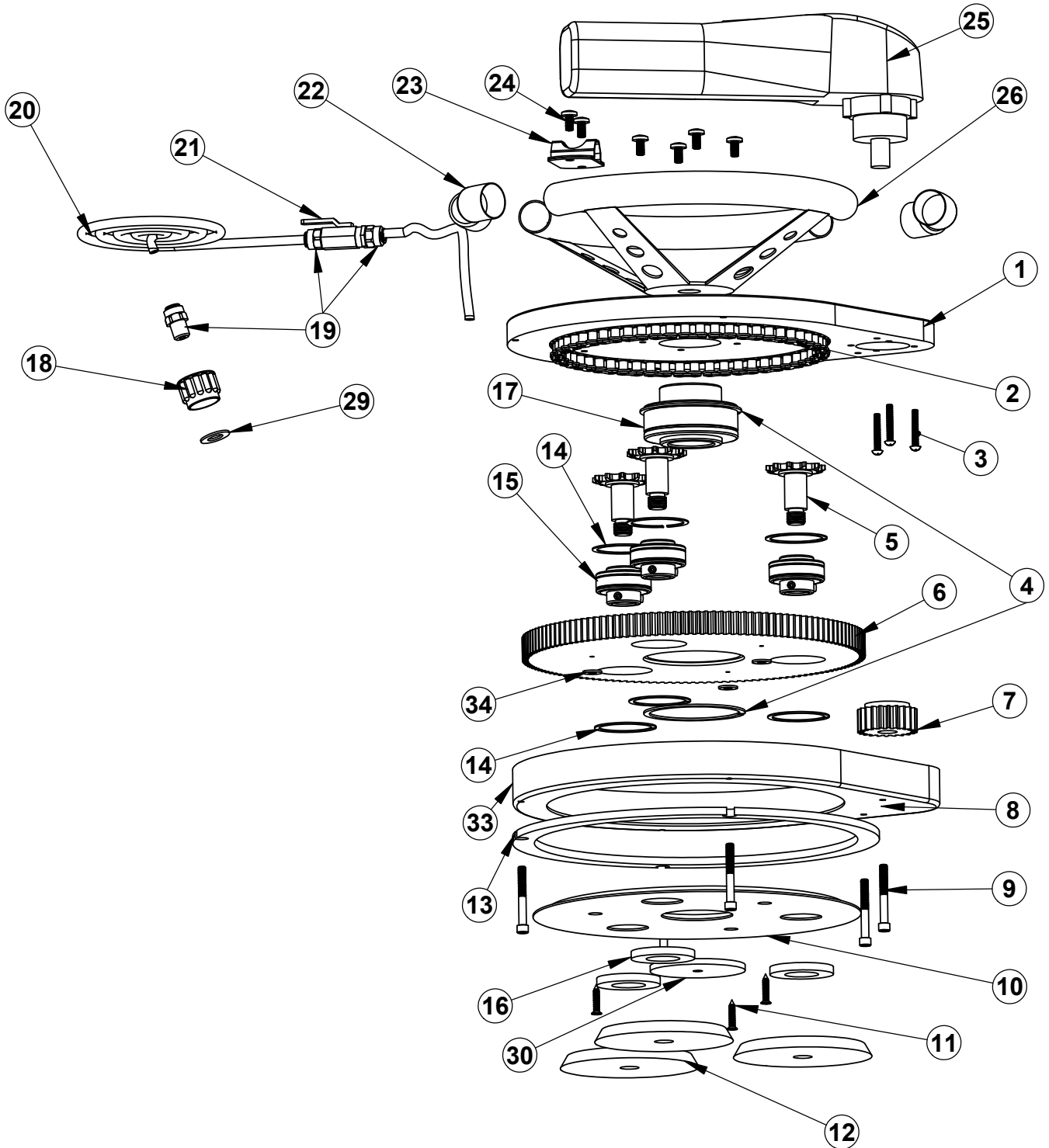
The DS301 is a versatile tool. Here are just a few uses:

Honing and polishing of limestone, marble, granite, glass, concrete counter tops, stairs, walls and plastic.

Cleaning boat hulls and floors

Sanding of wood floors and dry wall seams

DS301 Assembly



DS301 Parts List

ITEM	PART NO.	QTY.	DESCRIPTION
1	6041253	1	Aluminum Base
2	6041254	1	Chain
3	2900172	3	10-24 x 1-1/4" Round Head Screw
4	6041255	2	C-Clip
5	6041256	3	Sprocket
6	6041257	1	Plastic Spur Gear
7	6041258	1	Steel Spur Gear for 110v. Fein motor
7a	6041351	1	Steel Spur Gear for 230v. Fein motor
8	6041259	1	Cover Ring (with Velcro Hook)
9	2902983	5	1/4-20 x 2" Socket Head Cap Screw
10	6041260	1	Cover Plate
11	6041261	3	10 x 1" Flat Head Screw
12	6041262	3	Back Up Pad Rigid
13	6041263	1	Gasket Tape
14	6041264	6	C-Clip
15	6041265	3	Bearing
16	6041266	3	Gasket Ring
17	6041267	1	Bearing
18	6041268	1	Garden Hose Adapter
19	6041269	3	Hose Fitting
20	6041270	1	Water Hose
21	6041271	1	Brass Ball Valve
22	6041272	4	Steering Wheel Cap
23	6041273	1	Bracket
24	6041274	6	Binding Head Screw
25	6041275	1	Fein Motor
26	6041276	1	Steering Wheel
27	6041328	1	Shipping Container (Not Shown)
28	6041277	1	Dust Cowl (Not shown)
29	6041331	1	Hose Washer
30	6041329	1	Center Gasket Ring
31	6041278	1	Slurry Skirt (Not shown)
32	6041279	1	Wrench (Not shown)
33	6041321	1	1" X 41" Velcro Tape (Trim to 41")
34	2900009	1	1/4" Flat Washer

EQUIPMENT AND PARTS WARRANTY

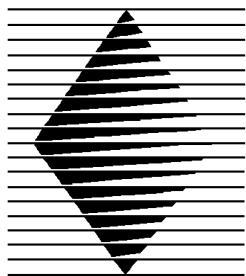
Diamond Products warrants all equipment manufactured by it against defects in workmanship or materials for a period of one (1) year from the date of shipment to Customer.

The responsibility of Diamond Products under this Warranty is limited to replacement or repair of defective parts at Diamond Products' Elyria, Ohio factory, or at a point designated by it, of such parts as shall appear to us upon inspection at such parts, to have been defective in material or workmanship, with expense for transportation and labor borne by Customer.

In no event shall Diamond Products be liable for consequential or incidental damages arising out of the failure of any Product to operate properly.

Integral units such as engines, electric motors, batteries, transmissions, etc., are excluded from this Warranty and are subject to the prime manufacturer's warranty.

THIS WARRANTY IS IN LIEU OF ALL OTHER WARRANTIES, EXPRESSED OR IMPLIED, AND ALL SUCH OTHER WARRANTIES ARE HEREBY DISCLAIMED.



DIAMOND PRODUCTS

333 Prospect Street, Elyria, Ohio 44035
(440) 323-4616 • (800) 321-5336 • Fax (440) 323-8689
www.diamondproducts.com