



# SERVICE PARTS LIST

54-16-4040

SPECIFY CATALOG NO. AND SERIAL NO. WHEN ORDERING PARTS

ORDERING PARTS

REVISED BILL OF MATERIALS

DATE  
March '88

## TWO SPEED DYMODRILL

CATALOG NO. 4094

STARTING  
SERIAL NO. 740-1001

WIRING INSTRUCTION  
58-01-0930

**EXAMPLE:**



Component Parts (Small #)  
Are Included When Ordering  
The Assembly (Large #).

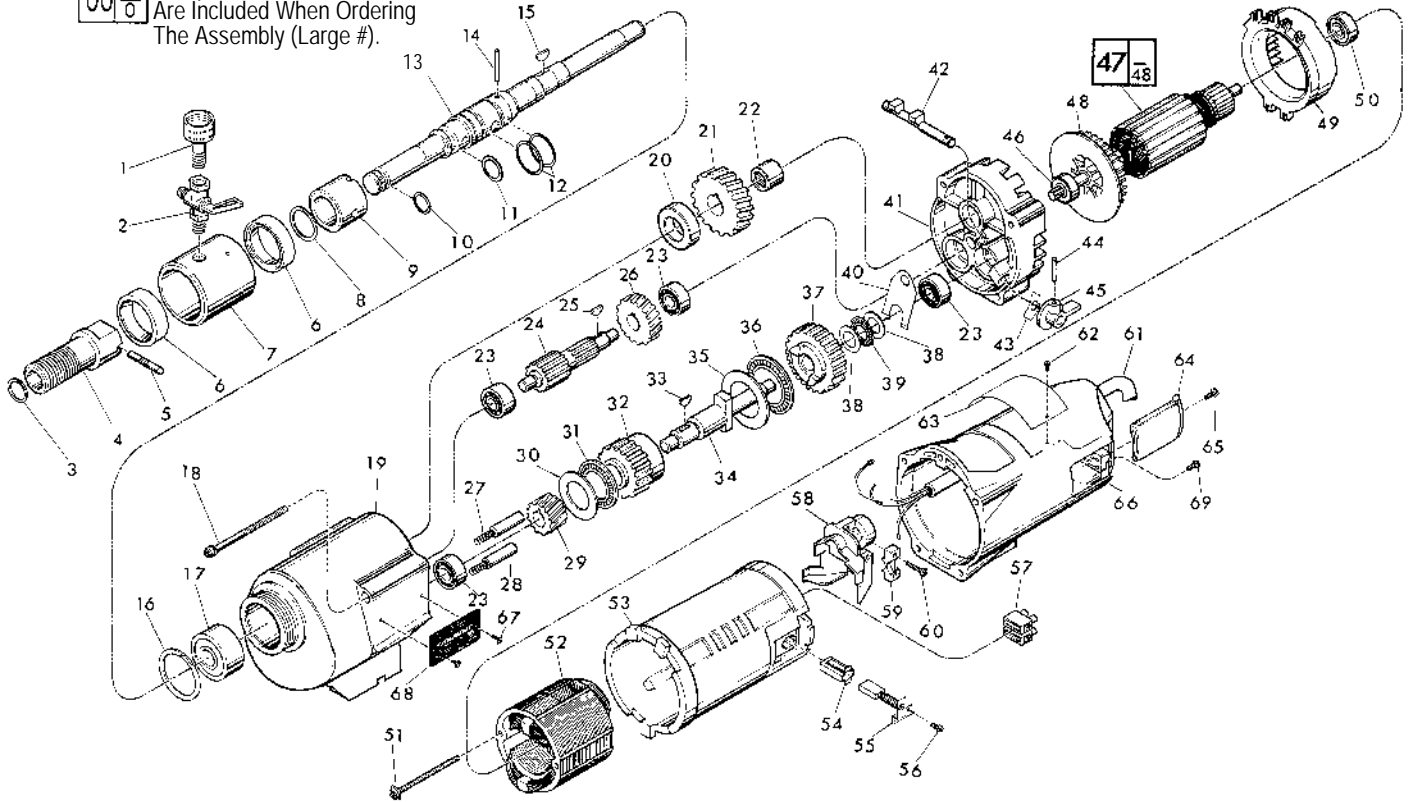


FIG.	DP PART #	DESCRIPTION OF PART	NO. REQ.
1	3200042	Water Hose Adapter	(1)
2	3200034	Shut Off Valve	(1)
3	2700027	Retaining Ring	(1)
4	4400084	Spindle Sleeve	(1)
5	44-60-0031	Shear Pin	(1)
6	2700021	Trostel Seal	(2)
7	2700199	Water Swivel Housing (With 06-83-2430 Scr)	(1)
8	2700141	Retaining Ring	(1)
9	2700214	Spindle Bushing	(1)
10	2700139	O-Ring	(1)
11	2700213	O-Ring	(1)
12	2700140	O-Ring	(2)
13	2700024	Spindle	(1)
14	2700212	1/8 X 1/2" Roll Pin	(1)
15	06-42-2400	Woodruff Key	(1)
16	2700210	Retaining Ring	(1)
17	2700209	Ball Bearing	(1)
18	2700455	1/4 - 20x4-1/4" Tanlite Torx Screw	(4)
19	2700311	Gear Case Assv.(Inc. 06-65-1535 Pin)	(1)
20	2700312	Spindle Spacer	(1)
21	2700251	Spindle Gear	(1)
22	2700529	Needle Bearing	(1)
23	2700182	Ball Bearing	(4)
24	2700256	Pinion Shaft Assv	(1)
25	2700177	Woodruff Key	(1)
26	2700257	Intermediate Gear	(1)
27	2700427	Shifting Spring	(2)
28	2700428	Shifting Plunger	(2)
29	2700252	Pinion Gear	(1)
30	2700272	Thrust Bearing Washer	(1)
31	2700273	Thrust Bearing	(1)
32	32-10-0061	Clutch Gear Assembly	(1)
33	2700183	Woodruff Key	(1)
34	2700334	Clutch Shaft	(1)
35	2700274	Thrust Bearing Washer	(1)
36	2700255	Thrust Bearing	(1)
37	2700253	Clutch Gear Assembly	(1)
38	2700275	Thrust Bearing Washer	(1)
39	2700276	Thrust Bearing	(1)
40	2700460	Shifting Yoke	(1)

FIG.	DP PART #	DESCRIPTION OF PART	NO. REQ.
41	14-13-0220	Diaphragm Assv.(Inc. 06-65-1155 Pin)	(1)
42	2700324	Shift Cam	(1)
43	2700458	Gear Case Seal	(1)
44	2700764	1/8 x 3/4" Groove Pin	(1)
45	28-60-0056	Shifting Knob	(1)
46	2700528	Ball Bearing	(1)
47	2700441	120 V Armature	(h)
48	2701275	Fan	(1)
49	2700443	Baffle	(1)
50	2700206	Ball Bearing	(1)
51	06-82-9152	10-24x2-3/4" Torx Sem Screw	(2)
52	2701463	120 V Field	(1)
53	2700534	Motor Insulator	(1)
54	2700525	Brush Tube	(1)
55	2700437	Carbon Brush Assembly	(1)
56	2700436	8-32x5/16" Pan Torx Sem Screw	(2)
57	2702029	Terminal Block	(1)
58	2700368	Wire Tran	(1)
59	31-17-0200	Cord Clamp	(1)
60	2702238	8-16x1" Pan Hd. Plastite Torx Screw	(2)
61	22-64-4460	Cord Set (Inc 23-35-0120 Plug)	(1)
62	06-85-0700	Nameplate Screw	(2)
63	12-15-7020	Nameplate	(1)
64	2701208	Brush Cover	(2)
65	06-82-7252	8-32 x 3/8" Pan Slot Taplite Screw	(1)
66	2700524	Motor Housing	(1)
67	06-82-5266	4-40x1/4" Pan Hd. Tanlite Screw	(2)
68	12-98-2100	Instruction Plate	(1)
69	06-95-5200	8-32 x 5/16" Slot Hex Hd. Screw	(1)
	2400010	1-3/8" Open End Wrench	(1)
	3200024	Water Hose Washer(For Fig. No. 1)	(1)

**FOR MOUNTING DRILL MOTOR USE:**

	2900088	1/4-20 x 1" Socket Hd. Screw	(4)
	06-97-4050	1/4" Split Ring Lock Washer	(4)

**FIG. 19 LUBRICATION**

18 Oz. Type "E" Grease, No. 49-08-4121