

DIAMOND

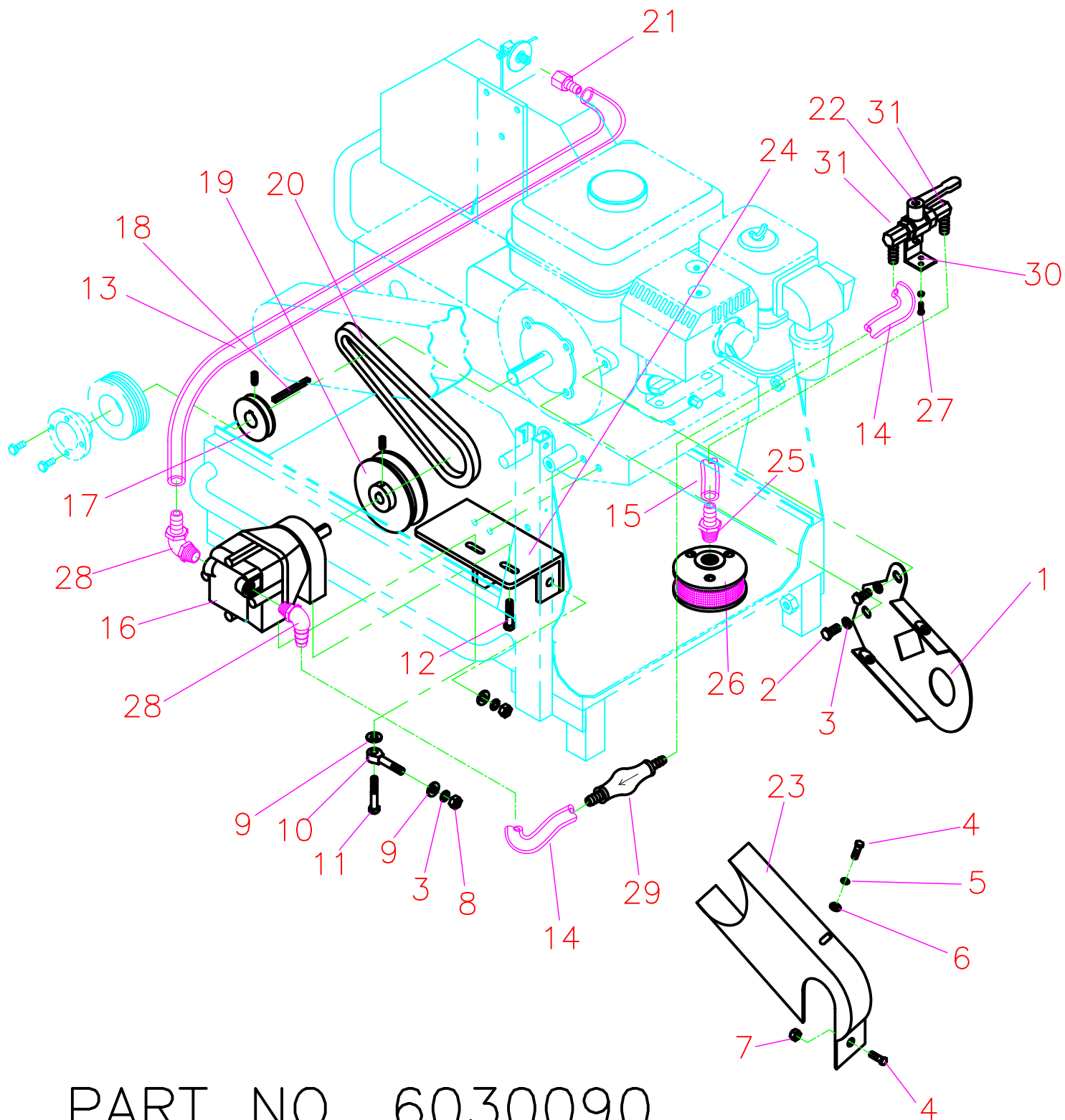
PRODUCTS

MASONRY SAW

PARTS LIST

MODEL:CC555M-H
WATER PUMP ADD-ON KIT
(# 6030090)

(Revised 09/18/02)



PART NO. 6030090
 WATER PUMP ADD-ON
 KIT FOR CC555M-H

CC555-H DIAPHRAM WATER PUMP ADD-ON-KIT

PART NO. 6030090

ITEM	PART NO.	DESCRIPTION	QUANTITY
1	6030093	BELT GUARD MOUNTING BRACKET	1
2	2900589	5/16-24 x 3/4 HEX HD. CAP SCREW	2
3	2900031	LOCKWASHER, 5/16 SPLIT	4
4	2900544	M6 x 12 HEX HD. CAPSCREW	2
5	2900024	LOCKWASHER, 1/4" SPLIT	2
6	2900009	1/4" FLAT WASHER, SAE	2
7	2900301	M5 LOCK NUT, NYLON	2
8	2900343	M8 HEX NUT	1
9	2900022	5/16 FLAT WASHER, SAE	10
10	2900344	EYEBOLT, M8 x 50 MM	1
11	2900217	5/16-18 x 1-1/4 HEX HD. CAP SCREW	1
12	2900019	5/16-18 x 3/4 HEX HD. CAP SCREW	1
13	3200052	HOSE-3/8" CLEAR CORO BRAID x 30" LG.	1
14	3200052	HOSE-3/8" CLEAR CORO BRAID x 5-1/2" LG.	2
15	3200052	HOSE-3/8" CLEAR CORO BRAID x 18" LG.	1
16	6030174	DIAPHRAGM PUMP ASSEMBLY	1
17	2500921	PULLEY, 3L-2.00 x 3/4" BORE	1
18	6030106	KEY, 3/16" SQ., BEVEL END x 2" LG.	1
19	2500922	PULLEY, 3L-3.50 x 1/2" BORE	1
20	2500927	V-BELT, 3L x 24" LENGTH	1
21	3200031	1/4" NPT(M) x 3/8" HOSE BARB (STRAIGHT)	1
22	3200474	VALVE, WATER FLOW, 1/4" NPT	1
23	6030094	BELT GUARD	1
24	6030071	WATER PUMP MTG. BRACKET (CC555M-H ONLY)	1
25	3200234	1/2" NPT(M) x 3/8" HOSE BARB (STRAIGHT)	1
26	2501373	INLET STRAINER, 1/2" NPT	1
27	2900339	M5 x 12 MM HEX HD. CAP SCREW - w/2900301 M5 NYLOK	2
28	2702175	PORT FITTING, 3/8" BARB (90 DEGREE)	2
29	2500926	ULTRA FLOW BULB	1
30	2501395	VALVE HOLDING BRACKET	1
31	3200475	FITTING, 1/4" MALE PIPE TO 3/8" HOSE BARB (90 degree)	2

EQUIPMENT AND PARTS WARRANTY

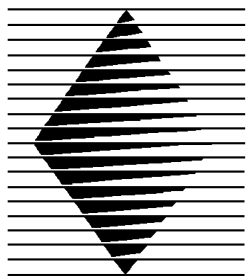
Diamond Products warrants all equipment manufactured by it against defects in workmanship or materials for a period of one (1) year from the date of shipment to Customer.

The responsibility of Diamond Products under this Warranty is limited to replacement or repair of defective parts at Diamond Products' Elyria, Ohio factory, or at a point designated by it, of such parts as shall appear to us upon inspection at such parts, to have been defective in material or workmanship, with expense for transportation and labor borne by Customer.

In no event shall Diamond Products be liable for consequential or incidental damages arising out of the failure of any Product to operate properly.

Integral units such as engines, electric motors, batteries, transmissions, etc., are excluded from this Warranty and are subject to the prime manufacturer's warranty.

THIS WARRANTY IS IN LIEU OF ALL OTHER WARRANTIES, EXPRESSED OR IMPLIED, AND ALL SUCH OTHER WARRANTIES ARE HEREBY DISCLAIMED.



**DIAMOND
PRODUCTS**

333 Prospect Street, Elyria, Ohio 44035
(440) 323-4616 • (800) 321-5336 • Fax (440) 323-8689

www.diamondproducts.com