



SERVICE PARTS LIST

BULLETIN NO.
54-16-4093

SPECIFY CATALOG NO. AND SERIAL NO. WHEN ORDERING PARTS

REVISED BULLETIN

DATE

DYMODRILL with INTERNAL
STARTING

54-16-4092

Jan. 2006

EXAMPLE:

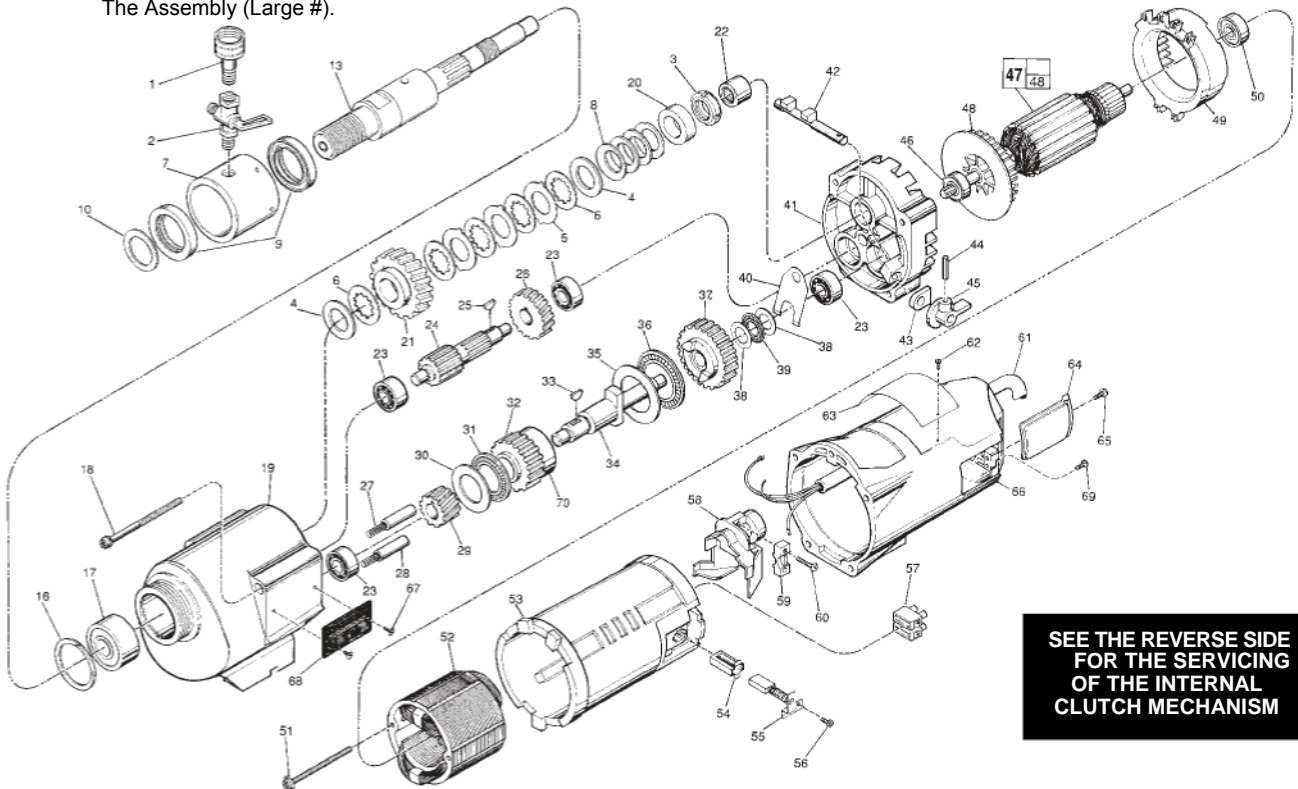
CATALOG NO. 4096

SERIAL

WIRING INSTRUCTION

58-01-0930

00 0 Component Parts (Small #)
Are Included When Ordering
The Assembly (Large #).



| FIG. | DP Part # | DESCRIPTION OF PART | NO. REQ. |
|------|-------------|--------------------------------------|----------|
| 1 | 2700217 | Water Hose Adapter | (1) |
| 2 | 3200034 | Shut Off Valve | (1) |
| 3 | 2701526 | Retaining Nut | (1) |
| 4 | 2701592 | Thrust Washer | (2) |
| 5 | 2701593 | Clutch Disc-Outer | (3) |
| 6 | 2701594 | Clutch Disc-Inner | (5) |
| 7 | 2700199 | Water Swivel Hsg Incl 06-83-2430 Scr | (1) |
| 8 | 2701954 | Disc Spring | (4) |
| 9 | 2701308 | Seal | (2) |
| 10 | 2701563 | Washer | (1) |
| 13 | 2701599 | Spindle | (1) |
| 16 | 2700210 | Retaining Ring | (1) |
| 17 | 2700209 | Ball Bearing | (1) |
| 18 | 2700455 | 1/4-20 x 4-1/4" Taptite T-30 | (1) |
| 19 | 2700311 | Gear Case Assy Incl 06-65-1 535 Pin | (4) |
| 20 | 45-36-1 520 | Spindle Spacer | (1) |
| 21 | 2701566 | Spindle Gear | (1) |
| 22 | 2701002 | Needle Bearing | (1) |
| 23 | 2700182 | Ball Bearing | (4) |
| 24 | 2700256 | Pinion Shaft Assy. | (1) |
| 25 | 2700177 | Woodruff Key | (1) |
| 26 | 2700257 | Intermediate Gear | (1) |
| 27 | 2700427 | Shifting Spring | (2) |
| 28 | 2700428 | Shifting Plunger | (2) |
| 29 | 2700252 | Pinion Gear | (1) |
| 30 | 2700272 | Thrust Bearing Washer | (1) |
| 31 | 2700273 | Thrust Bearing | (1) |
| 32 | 2704255 | Clutch Gear Assembly | (1) |
| 33 | 2700183 | Woodruff Key | (1) |
| 34 | 2700334 | Clutch Shaft | (1) |
| 35 | 2700274 | Thrust Bearing Washer | (1) |
| 36 | 2700255 | Thrust Bearing | (1) |
| 37 | 2700253 | Clutch Gear Assembly | (1) |
| 38 | 2700275 | Thrust Bearing Washer | (2) |
| 39 | 2700276 | Thrust Bearing | (1) |
| 40 | 2700460 | Shifting Yoke | (1) |
| 41 | 2700457 | Diaphragm Assy.(Inc. 06-65-1155 Pin) | (1) |
| 42 | 2700324 | Shift Cam | (1) |
| 43 | 2702760 | Foam Gasket | (2) |
| 44 | 2700764 | 1/8 x 3/4" Groove Pin | (1) |

| FIG. | DP Part # | DESCRIPTION OF PART | NO. REQ. |
|------|--------------|---------------------------------------|----------|
| 46 | 2700528 | Ball Bearing | (1) |
| 47 | 2700441 | 120 V Armature | (1) |
| 48 | 2701275 | Fan | (1) |
| 49 | 2700443 | Baffle | (1) |
| 50 | 2700206 | Ball Bearing | (1) |
| 51 | 06-82-9 1 52 | 10-24 x 2-3/4" Pan Hd. Sem. T-25 | (2) |
| 52 | 2701463 | 120 V. Field | (1) |
| 53 | 2700534 | Motor Insulator | (1) |
| 54 | 2700525 | Brush Tube | (2) |
| 55 | 2700437 | Carbon Brush Assembly | (2) |
| 56 | 2700436 | 8-32 x 5/16" Pan Hd. Sem.T-20 | (2) |
| 57 | 2702029 | Terminal Block | (1) |
| 58 | 2700368 | Wire Trap | (1) |
| 59 | 31 -1 7-0200 | Cord Clamp | (1) |
| 60 | 2702238 | 8-16 x 1" Pan Hd. Plastite T-20 | (2) |
| 61 | 22-64-0300 | Cord Set | (1) |
| 62 | 06-72-1 720 | Service Rivet | (2) |
| 63 | 12-99-1875 | Service Nameplate | (1) |
| 64 | 2701208 | Brush Cover | (2) |
| 65 | 06-82-5316 | 8-32 x 1/2" Pan Hd. Sit. Taptite T-20 | (2) |
| 66 | 2700607 | Motor Housing | (1) |
| 67 | 06-82-5266 | 4-40 x 1/4" Pan Hd. Taptite-T-10 | (2) |
| 68 | 12-98-2100 | Instruction Plate | (1) |
| 69 | 06-95-5200 | 8-32 x 5/16" Slotted Hex Hd. Screw | (1) |
| 70 | 45-36-0225 | Gear,Spacer | (1) |
| | 2400010 | 1-3/8" Open End Wrench | (1) |
| | 45-88-0800 | Water Hose Washer(For Fig. No. 1) | (1) |
| | 2701272 | Retaining Nut Spanner Tool | (1) |
| | 2800102 | 20amp DP electrical plug | (1) |

FOR MOUNTING DRILL MOTOR USE:

- 2900088 1/4"X1" Socket Hd. Screw (4)
- 06-97-4050 1/4" Split Ring Lock Washer (4)

FIG. LUBRICATION

- 19 18 Oz. Type "J" Grease, No. 49-08-4220.

45 2700335 Shifting Knob

(1) |

Servicing the Clutch Mechanism-

Torque Value for the Clutch Mechanism Retaining Nut (fig. no. 3).

Grease / Lubrication — when assembling the internal clutch component parts: the Clutch Discs (fig. nos. 5 and 6), Thrust Washers (fig. no. 4) and Disc Springs (fig. no. 8) are to be lightly coated with grease (Cat. No. 49-08-4220 type 'J') during their assembly into the spindle gear.

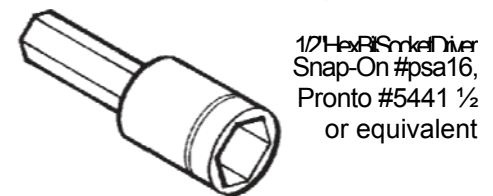
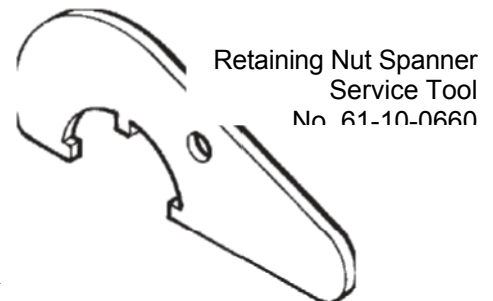
Grease / Lubrication specification includes coating internal bore of the spindle gear.

| | | | |
|---|------------|--------------------|-----|
| 4 | 45-88-1140 | Thrust Washers | (2) |
| 5 | 43-06-0160 | Clutch Discs-Outer | (3) |
| 6 | 43-06-0150 | Clutch Discs-Inner | (5) |
| 8 | 40-50-2150 | Spring Discs | (4) |
| | 32-75-3430 | Spindle Gear | (1) |

Service note: the assembly torque for the Clutch Mechanism Retaining Nut, No. 06-57-1050 (fig. no. 3), which insures the static torque required to slip the clutch mechanism, as lubricated, should be **40-45 ft-lbs.**

With the gear case separated from the diaphragm & motor housing of the Clutch Dymo-Drill motor —

- insert & engage a **61-10-0660** retaining nut spanner with the notches in the **06-57-1 050** clutch adjustment retaining nut.
- with a **1/2" hex socket bit driver** attached to a torque wrench, interlock the male hex with the female hex found in the threaded end of the dymodrill spindle.
- turn the torque wrench clockwise 3, observing the torque reading and tighten the clutch adjustment retaining nut on the rear of the spindle shaft until a value of **40-45 ft-lbs** is obtained.



1/2 Hex Bit Driver
Snap-On #psa16,
Pronto #5441 1/2
or equivalent