



OSHA 29 CFR § 1926.1153  
 RESPIRABLE SILICA DUST EXPOSURE  
 OBJECTIVE TEST DATA  
 Core Cut™ C14 Hand-Held Electric Saw  
 with Vacuum and Core Vac™ Skid Plate - Horizontal Cut



The testing simulated real life use of the equipment. The saw with vacuum skid plate and proper vacuum were tested under conditions that would produce a maximum cut depth of 5 inches. The sampling demonstrated that the equipment, when used according to manufacturer's recommendation, will perform as designed to eliminate respirable dust and respirable crystalline silica.

**Narrative:**

The Core Cut™ C14 electric hand saw, Core Vac™ vacuum skid plate and 250 CFM HEPA HEPA self-cleaning vacuum were tested. A 14-inch Heavy Duty Orange high speed blade was installed on the saw. Flat sawing was accomplished on cured concrete at a total length of 18-inches, 5-inches deep. The testing was done without water.

Respirator protection is recommended but not required when the equipment is used properly and according to manufacturer's recommendations.

- Product:** C14 Hand-Held electric saw with vacuum skid plate
- Engineering Controls:** 250 CFM HEPA self-cleaning vacuum
- Test Action:** Flat saw cutting
- Test Material:** Cured Concrete
- Test Method:** Personal sampling; dust track area sampling

**Core Cut™ C14 Hand-Held Saw Sample Data**

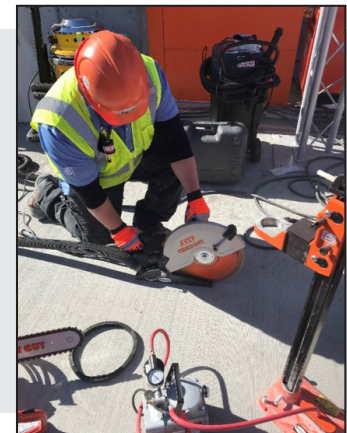
Sampling Date	Time of Sample	Sampling Duration	Type of Cut	Blade Diameter	Depth of Cut	Length of Cut	Weather Conditions
January 24, 2018	9:53 AM	5 Minutes	Flat Sawing	14"	5"	18"	Outside, Sunny 68°

<b>SAMPLING RESULTS:</b>	<b>SiO2</b>	Below Detection Limits
	<b>Respirable Dust</b>	Below Detection Limits
	<b>Total Dust</b>	.53 mg/m3

Testing conducted by SCT, Inc.

For further information, please contact Diamond Products Health and Safety Department.

This Objective Data represents one test per application and the amount of work performed during the Sampling Duration. The results provide the respirable silica dust exposure level based on the specific testing conditions, and in specific case situations.



Diamond Products Limited  
 333 Prospect Street - Elyria, OH 44035 U.S.A.  
 Phone: 800-321-5336, Fax: 800-634-4035  
 diamondproducts.com

**SCT**  
 Safety Engineering • Consultation • Training  
 6993 Pearl Rd. Middleburg Heights, OH 44130  
 800-204-1729