



**CORE VAC  
PARTS LIST**

**CVG1 PRO  
CVG1 PRO COMP  
GAS VAC**

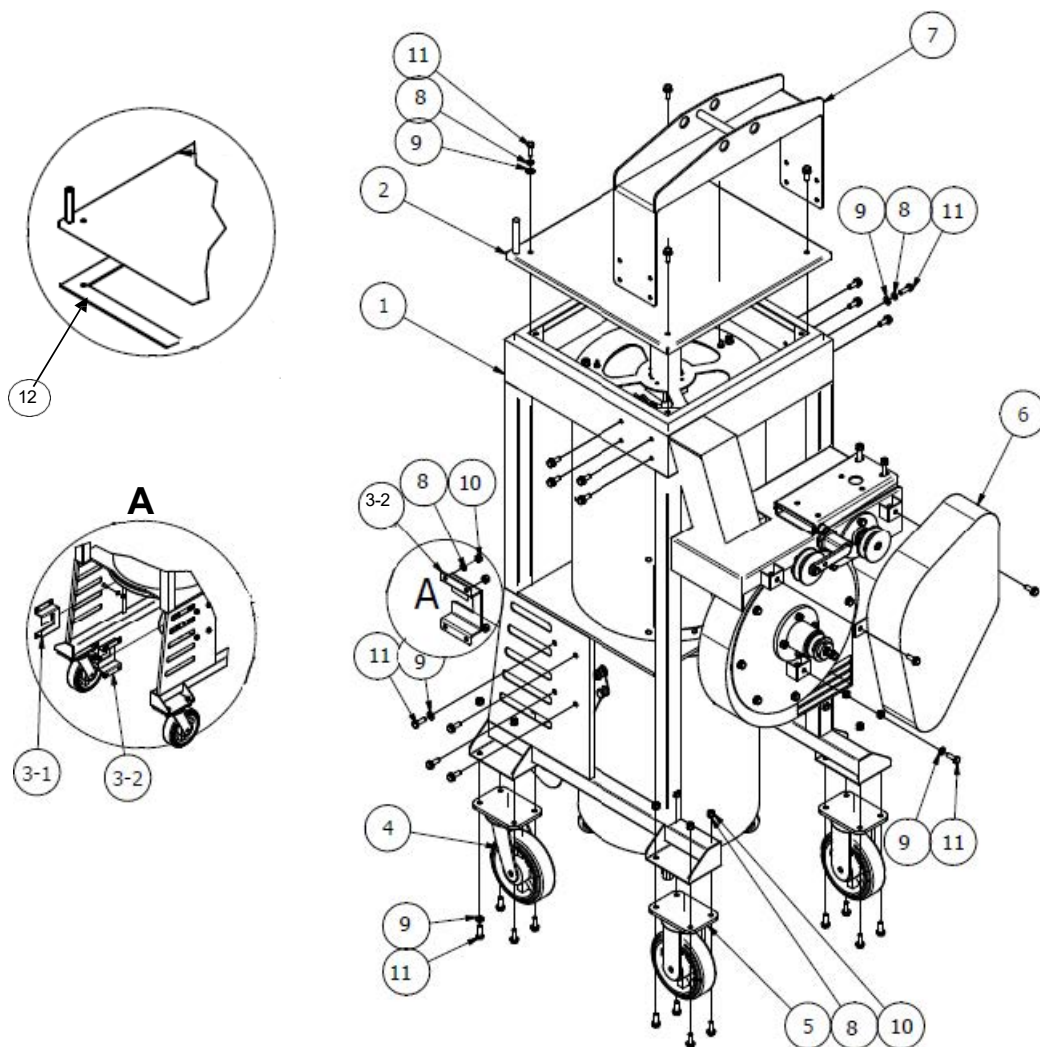
**APRIL, 2025**



# Table of Contents

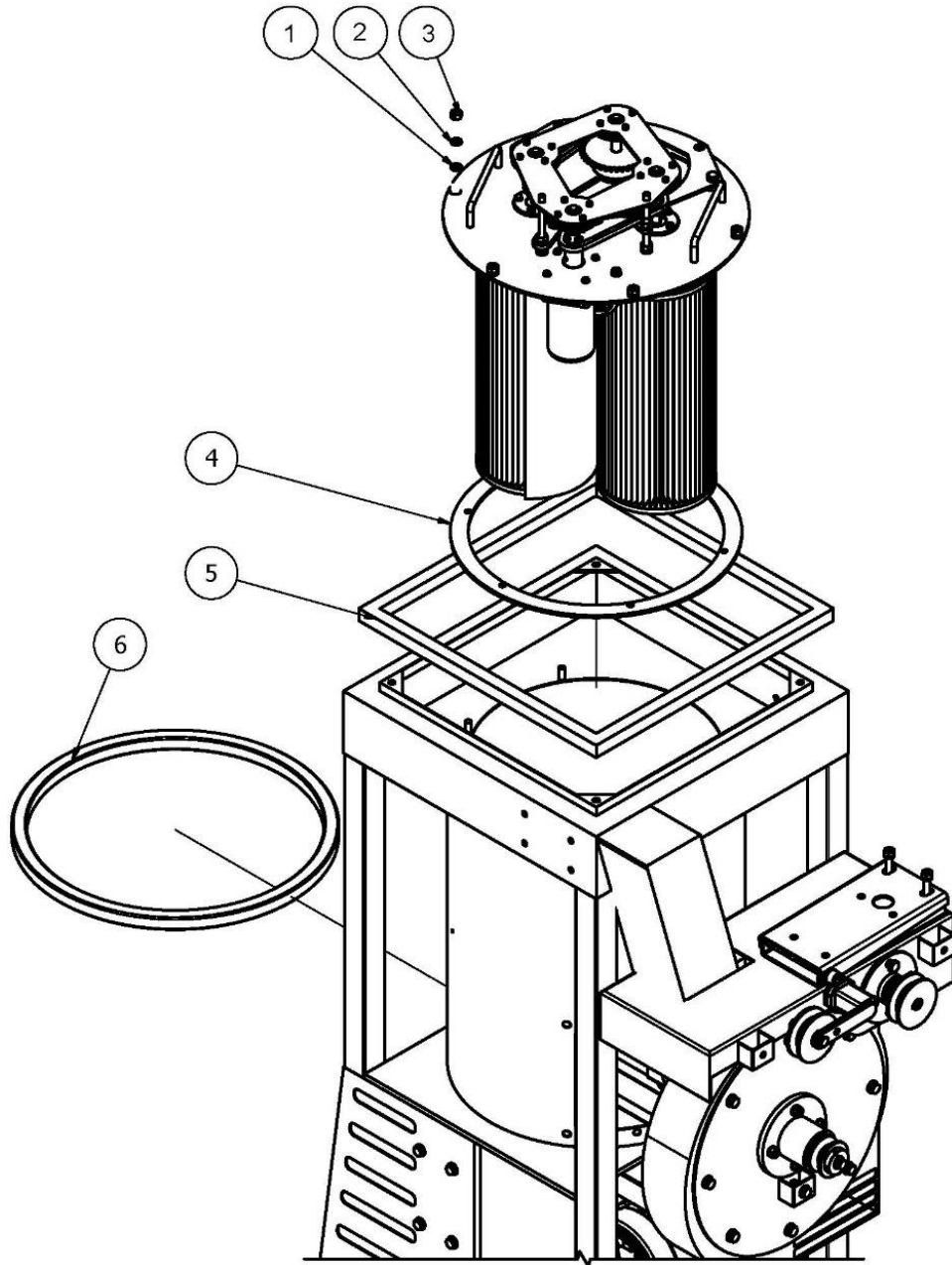
| <u>Description</u>                  | <u>Page No.</u> |
|-------------------------------------|-----------------|
| 1. Frame .....                      | 4               |
| 2. Filter Tank.....                 | 5               |
| 3. Filter Cleaner .....             | 6               |
| 4. Chain Cover .....                | 7               |
| 5. Chain Tensioner.....             | 8               |
| 6. Rotation Plate Guard.....        | 9               |
| 7. Filter Plate.....                | 10              |
| 8. Rotation Plate.....              | 11              |
| 9. Filter Cleaner Base .....        | 12              |
| 10. Filter Shake Bar Shaft Set..... | 13              |
| 11. Motor and Gearbox .....         | 14              |
| 12. Shake Bar .....                 | 15              |
| 13. Pulley Assembly.....            | 16              |
| 14. Impeller Housing .....          | 17              |
| 15. Impeller .....                  | 18              |
| 16. Dust Drum.....                  | 19              |
| 17. Hose Inlet.....                 | 20              |
| 18. Engine .....                    | 21              |
| 19. Wiring .....                    | 22              |
| 20. Notes .....                     | 24              |
| 21. Warranty .....                  | 26              |

# Frame



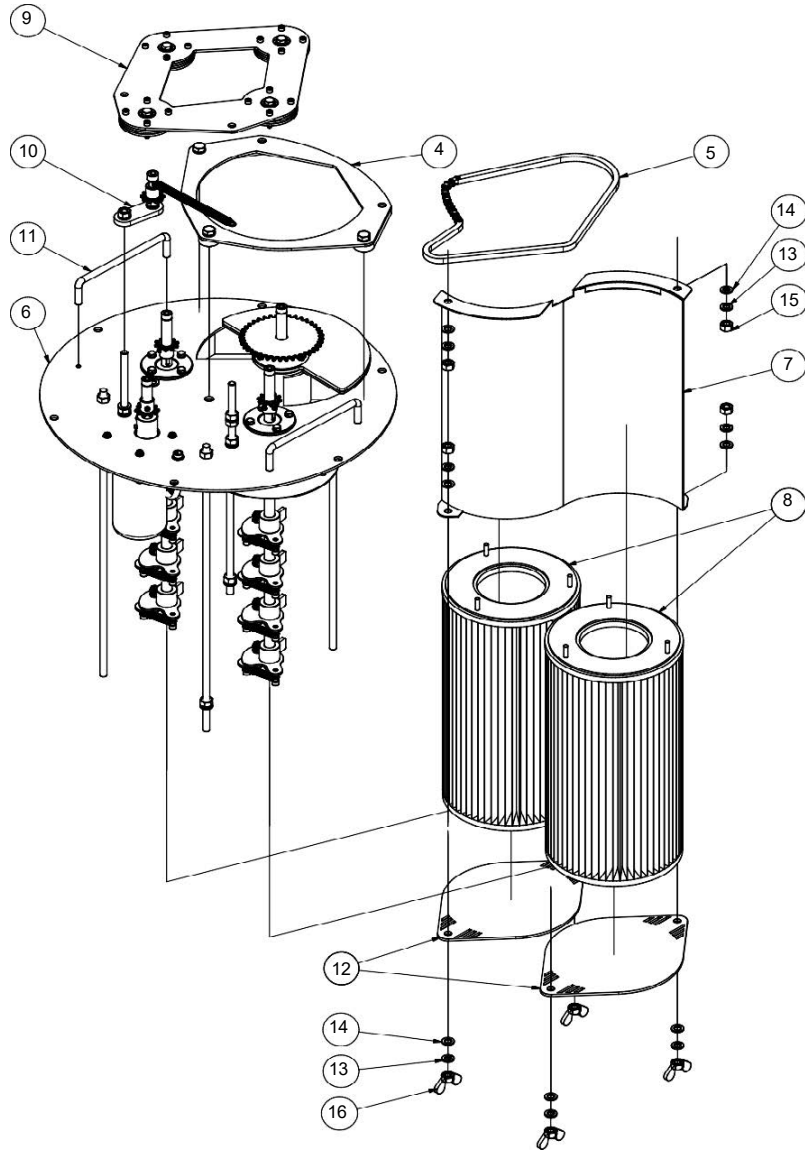
| ITEM | DP#     | QTY | DESCRIPTION                    |
|------|---------|-----|--------------------------------|
| 1    | 2508931 | 1   | MAIN FRAME                     |
| 2    | 2508837 | 1   | UPPER TANK LID                 |
| 3-1  | 2508832 | 1   | LEVER SUPPORT STAND LEFT       |
| 3-2  | 2508833 | 1   | LEVER SUPPORT STAND RIGHT      |
| 4    | 2508834 | 2   | SWIVEL WHEEL 6"                |
| 5    | 2508835 | 2   | WHEEL 6"                       |
| 6    | 2508849 | 1   | BELT COVER                     |
| 7    | 2508847 | 1   | UPPER LIFTING STAND            |
| 8    | 2508884 | 37  | M10 SPRING WASHER              |
| 9    | 2508885 | 64  | M10 WASHER                     |
| 10   | 2508886 | 27  | M10 NUT                        |
| 11   | 2508887 | 39  | M10 X 30 BOLT                  |
| 12   | 2508689 | 1   | LID SEAL                       |
| 13   | 1802924 | 1   | DECAL SET FOR CVG1 (NOT SHOWN) |

# Filter Tank



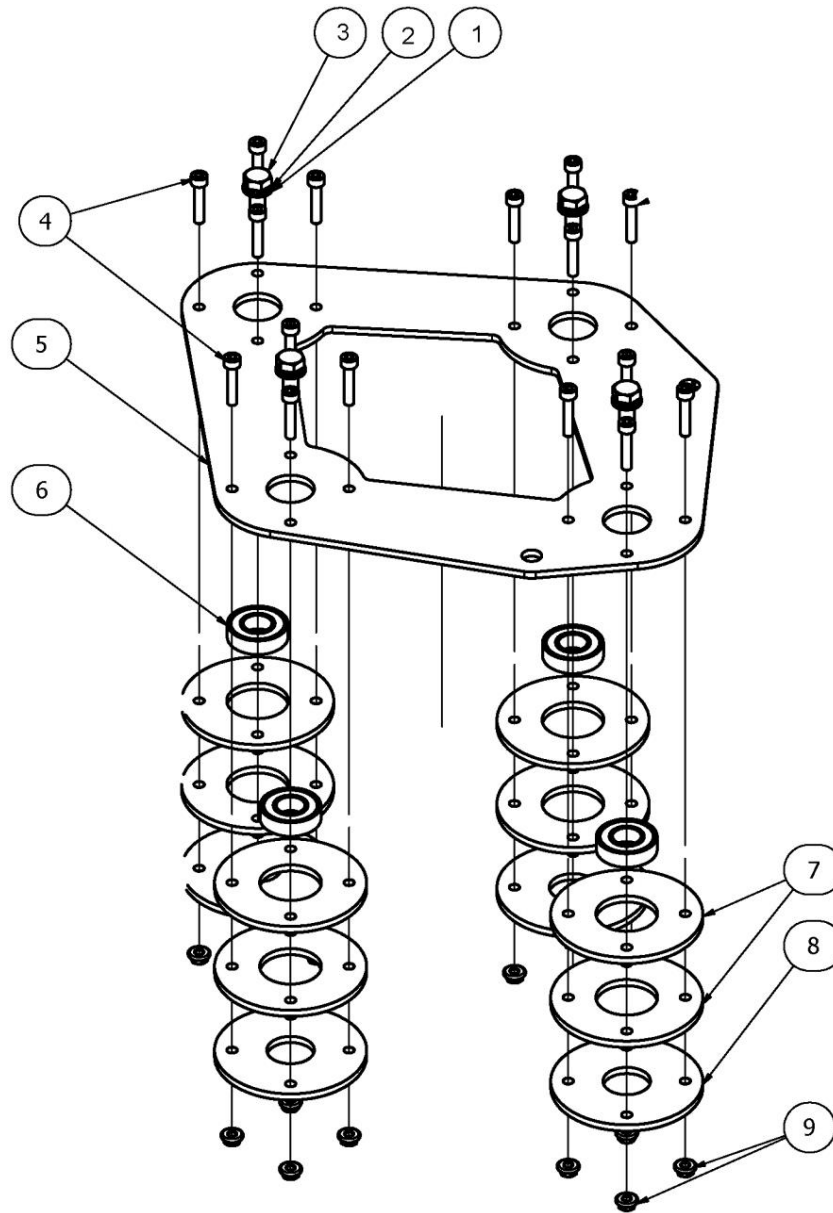
| ITEM | DP #    | QTY | DESCRIPTION       |
|------|---------|-----|-------------------|
| 1    | 2508885 | 6   | M10 WASHER        |
| 2    | 2508884 | 6   | M10 SPRING WASHER |
| 3    | 2508886 | 6   | M10 NUT           |
| 4    | 2508853 | 1   | FILTER PLATE SEAL |
| 5    | 2508843 | 1   | UPPER COVER SEAL  |
| 6    | 2508844 | 1   | DUST DRUM SEAL    |

# Filter Cleaner



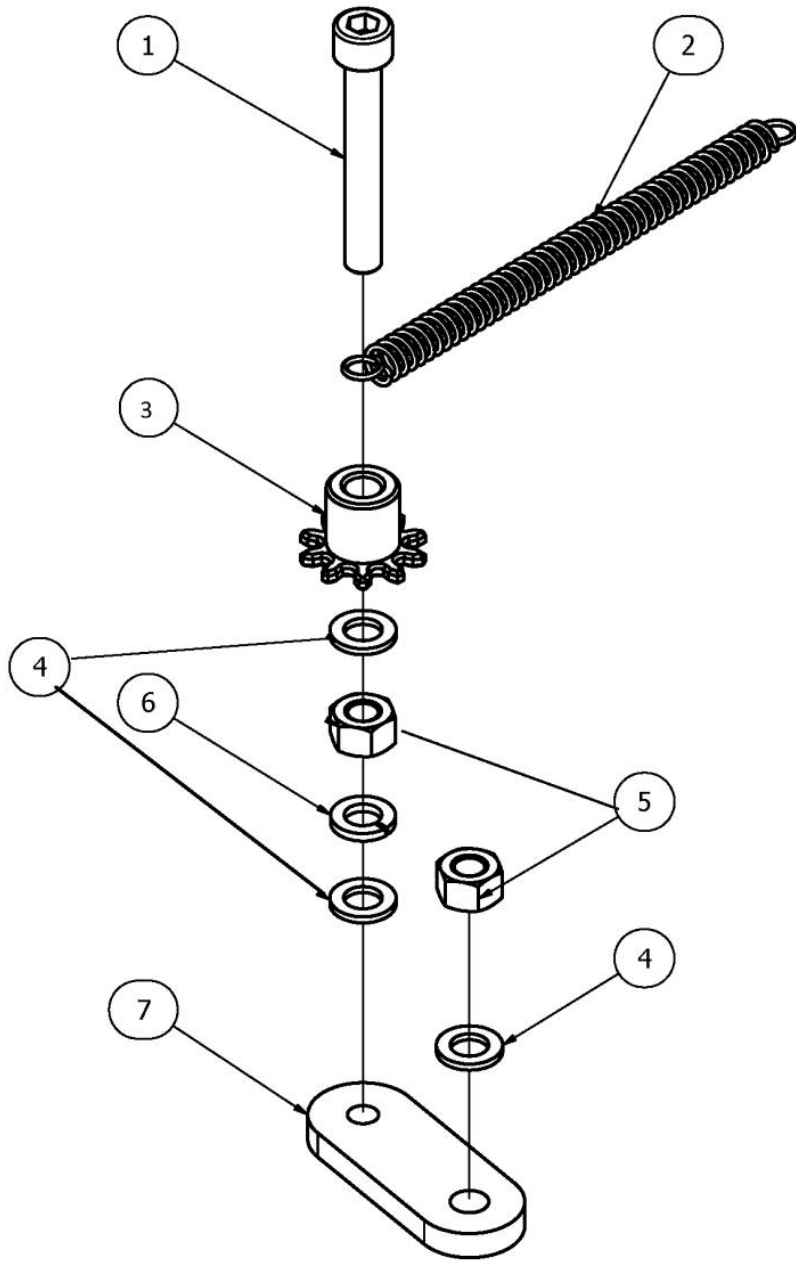
| ITEM | DP#     | QTY | DESCRIPTION                   |
|------|---------|-----|-------------------------------|
| 1    | 2508747 | 4   | M8X16 BOLT                    |
| 2    | 2509155 | 4   | M8 SPRING WASHER              |
| 3    | 2508891 | 4   | M8 WASHER                     |
| 4    | 2508715 | 1   | ROTATION RAIL PLATE COVER SET |
| 5    | 2508949 | 1   | CHAIN                         |
| 6    | 2508723 | 1   | FILTER PLATE SET              |
| 7    | 2505593 | 1   | FILTER COVERS COMBINED        |
| 8    | 2508947 | 2   | TWIN MAIN FILTER              |
| 9    | 2508705 | 4   | CHAIN COVER SET               |
| 10   | 2507810 | 1   | CHAIN TENSION SET             |
| 11   | 2508714 | 1   | FILTER HANDLE                 |
| 12   | 2505594 | 1   | FILTER COVER BOTTOM           |
| 13   | 2508884 | 8   | M10 SPRING WASHER             |
| 14   | 2508885 | 8   | M10 WASHER                    |
| 15   | 2508886 | 4   | M10 NUT                       |
| 16   | 2901340 | 4   | M10 WING NUT                  |

# Chain Cover



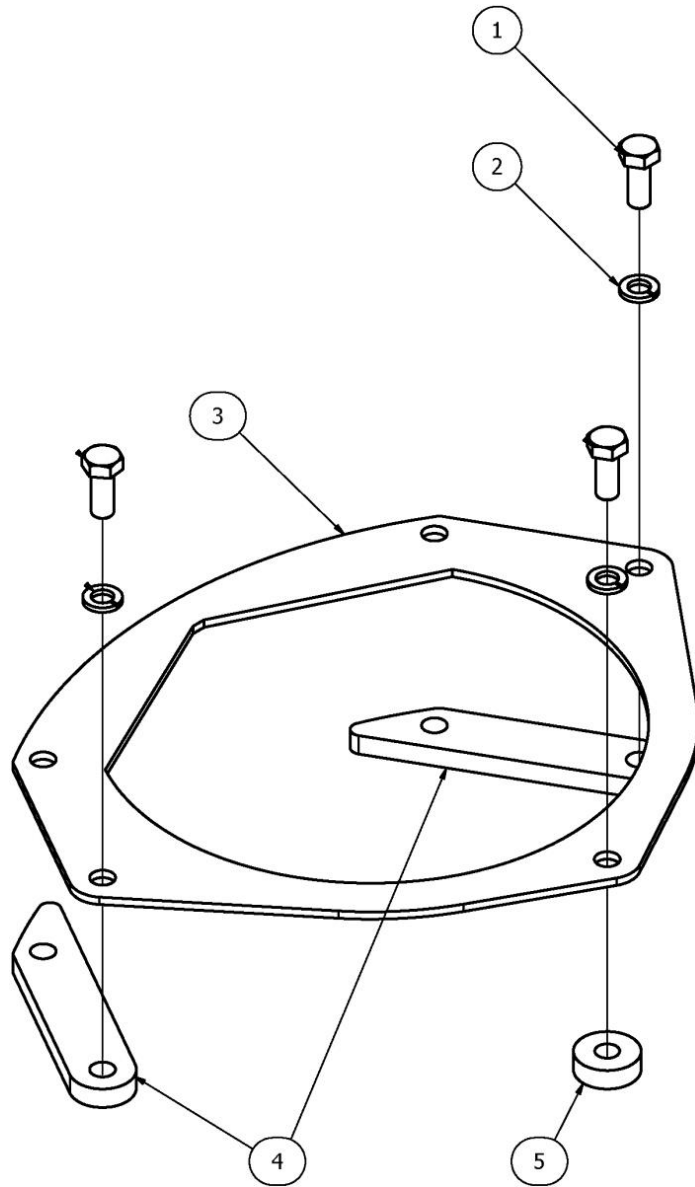
| ITEM | DP #    | QTY | DESCRIPTION             |
|------|---------|-----|-------------------------|
| 1    | 2508891 | 4   | M8 WASHER               |
| 2    | 2509155 | 4   | M8 SPRING WASHER        |
| 3    | 2508747 | 4   | M8X16 BOLT              |
| 4    | 2508748 | 16  | M5X25 HEX BOLT          |
| 5    | 2508706 | 1   | CHAIN COVER PLATE       |
| 6    | 2508707 | 4   | SUPPORT BEARING         |
| 7    | 2508708 | 4   | COVER BEARING HOUSING 1 |
| 8    | 2508709 | 8   | COVER BEARING HOUSING 2 |
| 9    | 2508894 | 16  | M5 FLANGE NUT           |

# Chain Tensioner



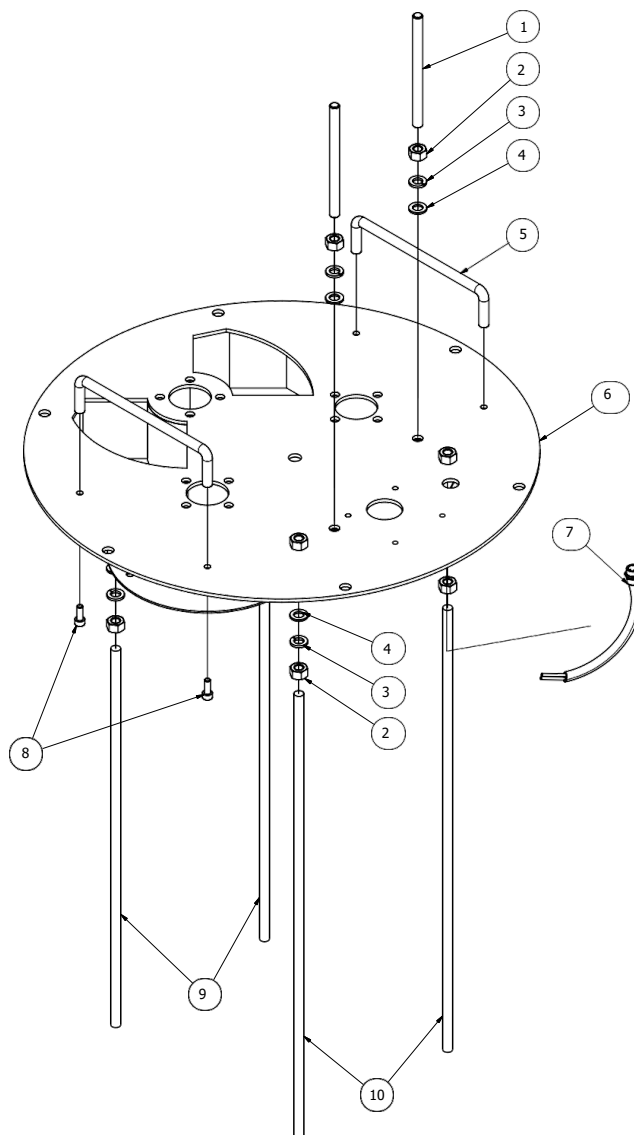
| ITEM | DP #    | QTY | DESCRIPTION          |
|------|---------|-----|----------------------|
| 1    | 2508750 | 1   | M10X70 HEX BOLT      |
| 2    | 2508712 | 1   | CHAIN TENSION SPRING |
| 3    | 2508713 | 1   | CHAIN TENSION GEAR   |
| 4    | 2508885 | 3   | M10 WASHER           |
| 5    | 2508886 | 2   | M10 NUT              |
| 6    | 2508884 | 1   | M10 SPRING WASHER    |
| 7    | 2508711 | 1   | CHAIN TENSION PLATE  |

# Rotation Plate Guard



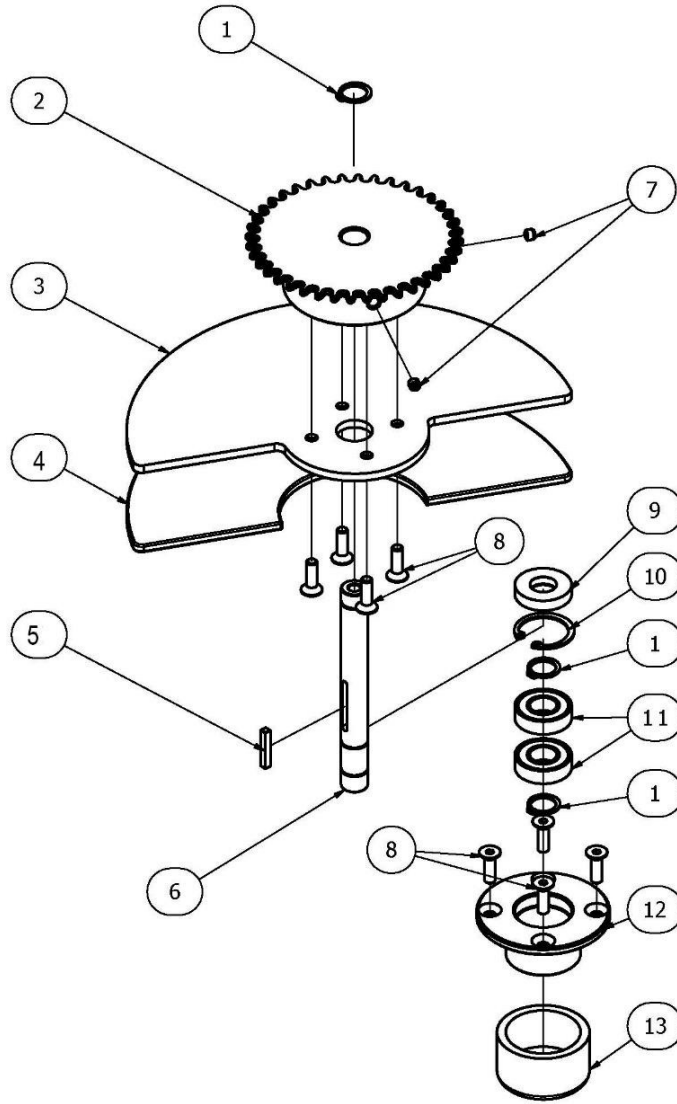
| ITEM | DP #    | QTY | DESCRIPTION                  |
|------|---------|-----|------------------------------|
| 1    | 2508749 | 3   | M10X25 BOLT                  |
| 2    | 2508884 | 3   | M10 SPRING WASHER            |
| 3    | 2508716 | 1   | ROTATION RAIL PLATE COVER    |
| 4    | 2508717 | 2   | ROTATION PLATE RAIL SPACER 1 |
| 5    | 2508718 | 1   | ROTATION PLATE RAIL SPACER 2 |

# Filter Plate



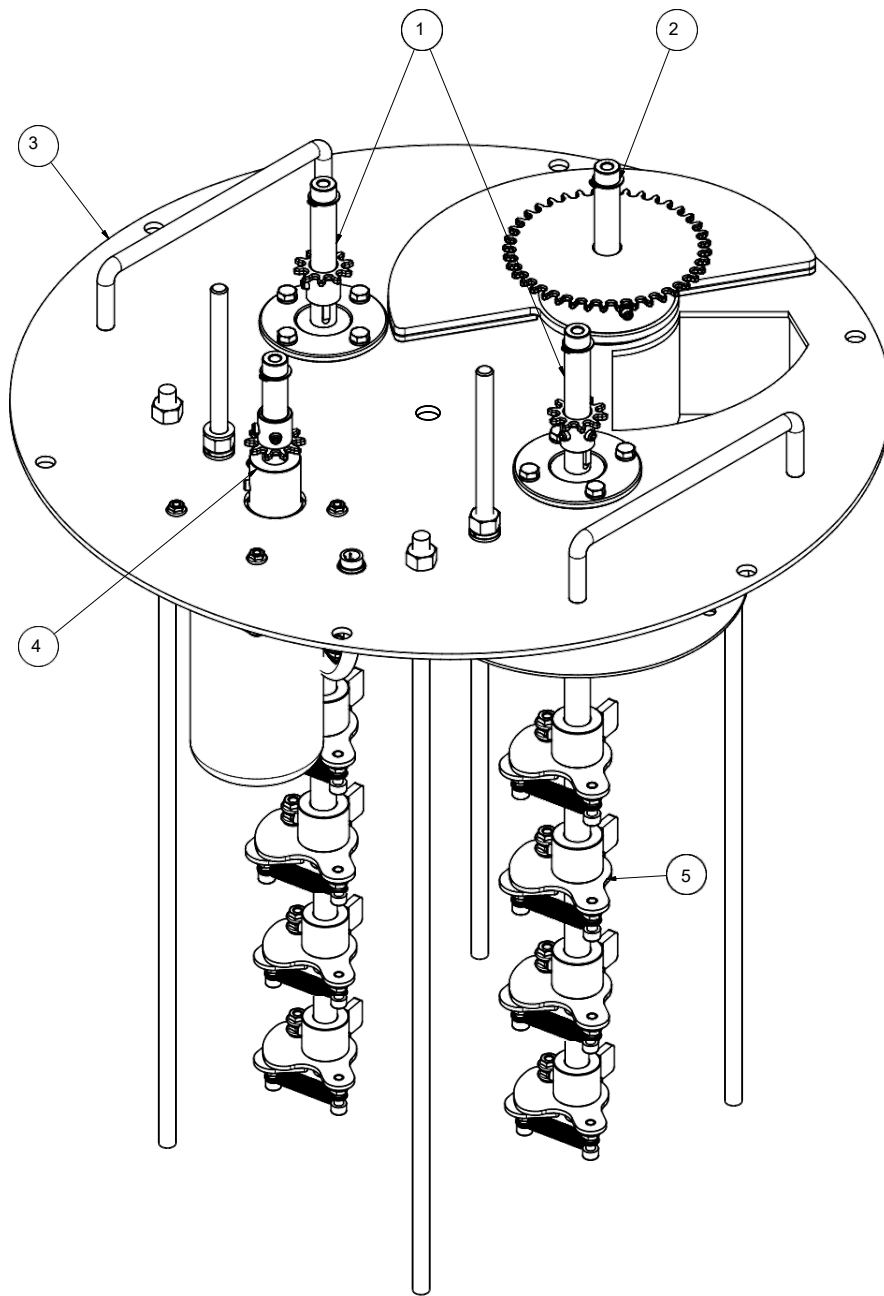
| ITEM | DP #    | QTY | DESCRIPTION                  |
|------|---------|-----|------------------------------|
| 1    | 2508751 | 2   | M10X135 FULL THREADED BOLT   |
| 2    | 2508886 | 4   | M10 NUT                      |
| 3    | 2508884 | 4   | M10 SPRING WASHER            |
| 4    | 2508885 | 4   | M10 WASHER                   |
| 5    | 2508714 | 2   | FILTER HANDLE                |
| 6    | 2508724 | 1   | FILTER PLATE                 |
| 7    | 2508725 | 1   | TERMINAL SET                 |
| 8    | 2508752 | 4   | M6X16 SOC SCREW              |
| 9    | 2505597 | 2   | M10 X 540 FULL THREADED BOLT |
| 10   | 2505596 | 2   | M10 X 560 FULL THREADED BOLT |

# Rotation Plate



| ITEM | DP #    | QTY | DESCRIPTION                        |
|------|---------|-----|------------------------------------|
| 1    | 2508727 | 3   | RETAINING RING 15 (C TYPE OUTSIDE) |
| 2    | 2508735 | 1   | GEAR 35B 40                        |
| 3    | 2508736 | 1   | ROTATION PLATE                     |
| 4    | 2508737 | 1   | ROTATION PLATE RUBBER              |
| 5    | 2508729 | 1   | KEY 4 X 4                          |
| 6    | 2508738 | 1   | SHAFT(SHORT)                       |
| 7    | 2508753 | 2   | M6X8 SET SCREW                     |
| 8    | 2508754 | 8   | M6X20 FLAT HEAD SOC SCREW          |
| 9    | 2508730 | 1   | 15X32X7 RETAINER SEAL              |
| 10   | 2508731 | 1   | RETAINING RING 32 (C TYPE INSIDE)  |
| 11   | 2508707 | 2   | SUPPORT BEARING                    |
| 12   | 2508740 | 1   | ROTATION PLATE BEARING HOUSING     |
| 13   | 2508739 | 1   | RUBBER CAP                         |

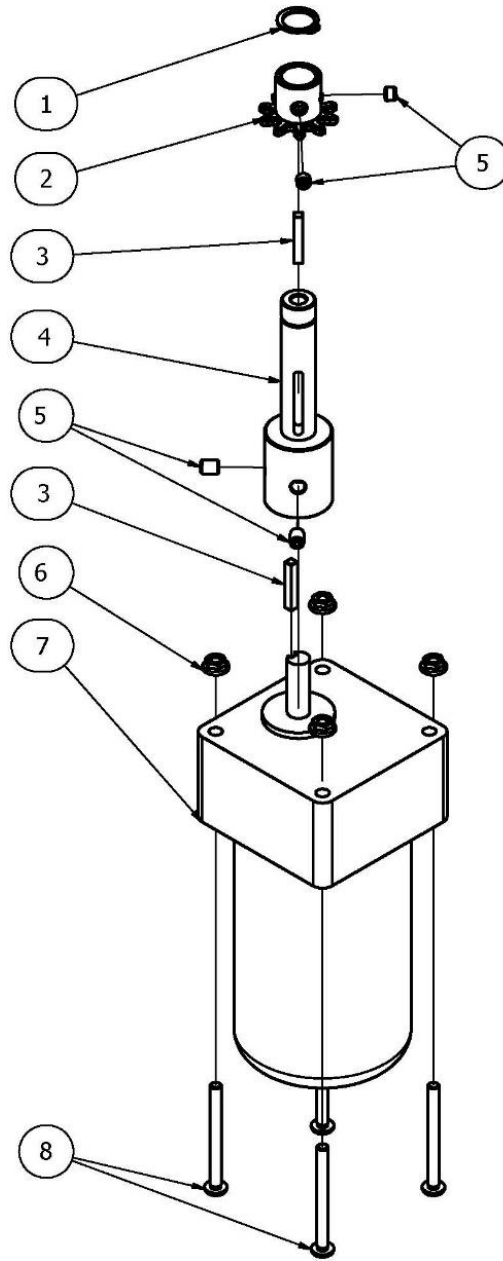
# Filter Cleaner Base



| ITEM | DP #    | QTY | DESCRIPTION                                |
|------|---------|-----|--|
| 1    | 2508726 | 2   | FILTER SHAKE BAR SHAFT SET (SEE NEXT PAGE) |
| 2    | 2508734 | 1   | ROTATION PLATE SET                         |
| 3    | 2508723 | 1   | FILTER PLATE SET                           |
| 4    | 2508741 | 1   | REDUCER MOTOR PART                         |
| 5    | 2508743 | 8   | SHAKE BAR HEADS                            |

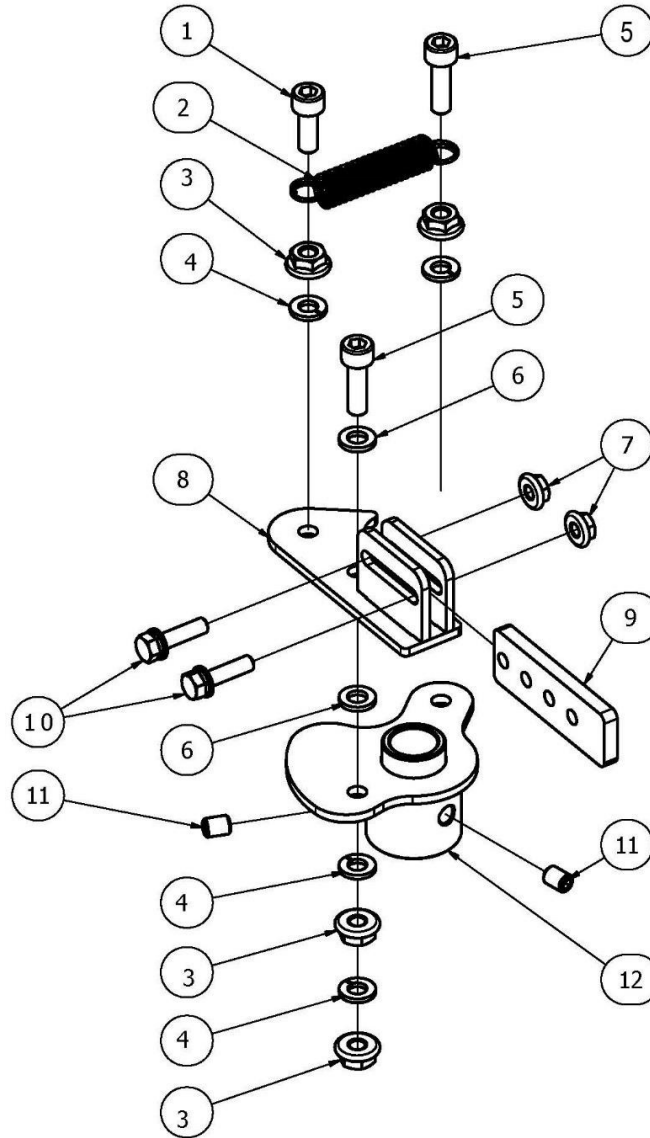


# Motor and Gearbox



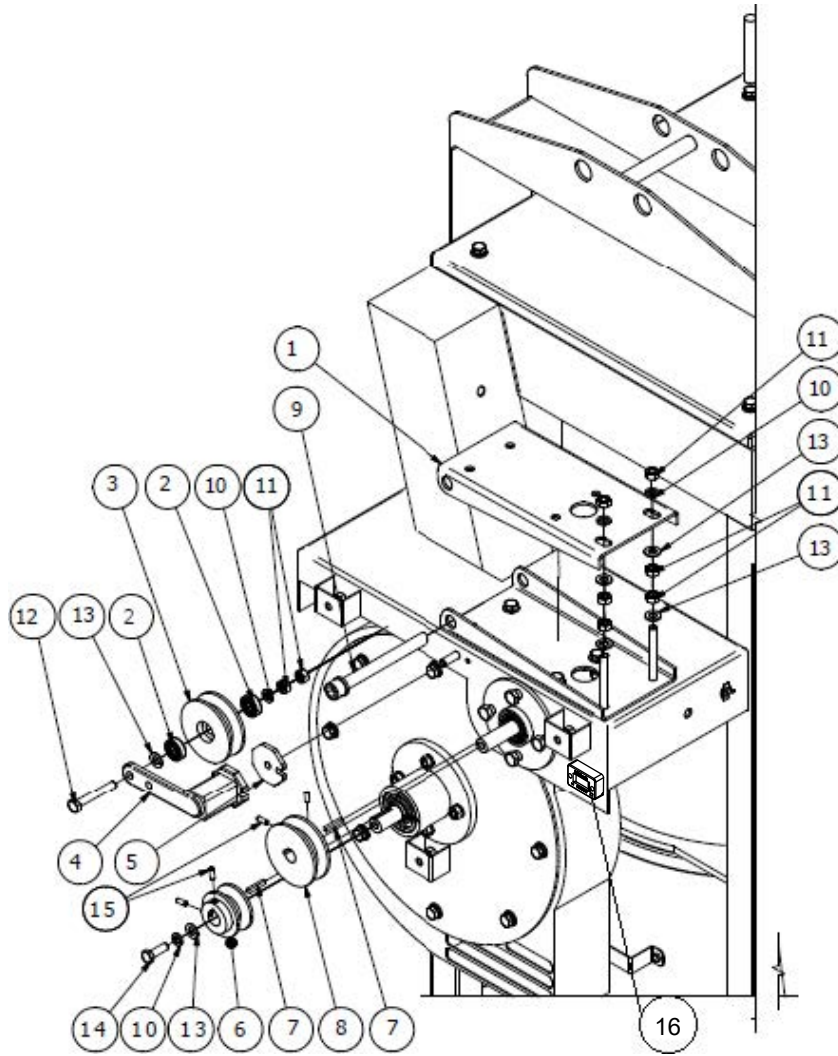
| ITEM | DP #    | QTY | DESCRIPTION                        |
|------|---------|-----|------------------------------------|
| 1    | 2508727 | 1   | RETAINING RING 15 (C TYPE OUTSIDE) |
| 2    | 2508728 | 1   | CHAIN GEAR 35B 12                  |
| 3    | 2508729 | 2   | KEY 4 X 4                          |
| 4    | 2508742 | 1   | SHAFT (MOTOR AXIS)                 |
| 5    | 2508753 | 4   | M6X8 SET SCREW                     |
| 6    | 2508755 | 4   | M5 MOTOR NUT                       |
| 7    | 2508838 | 1   | REDUCER MOTOR SET                  |
| 8    | 2508756 | 4   | M5X55 MOTOR BOLT                   |

# Shake Bar Head



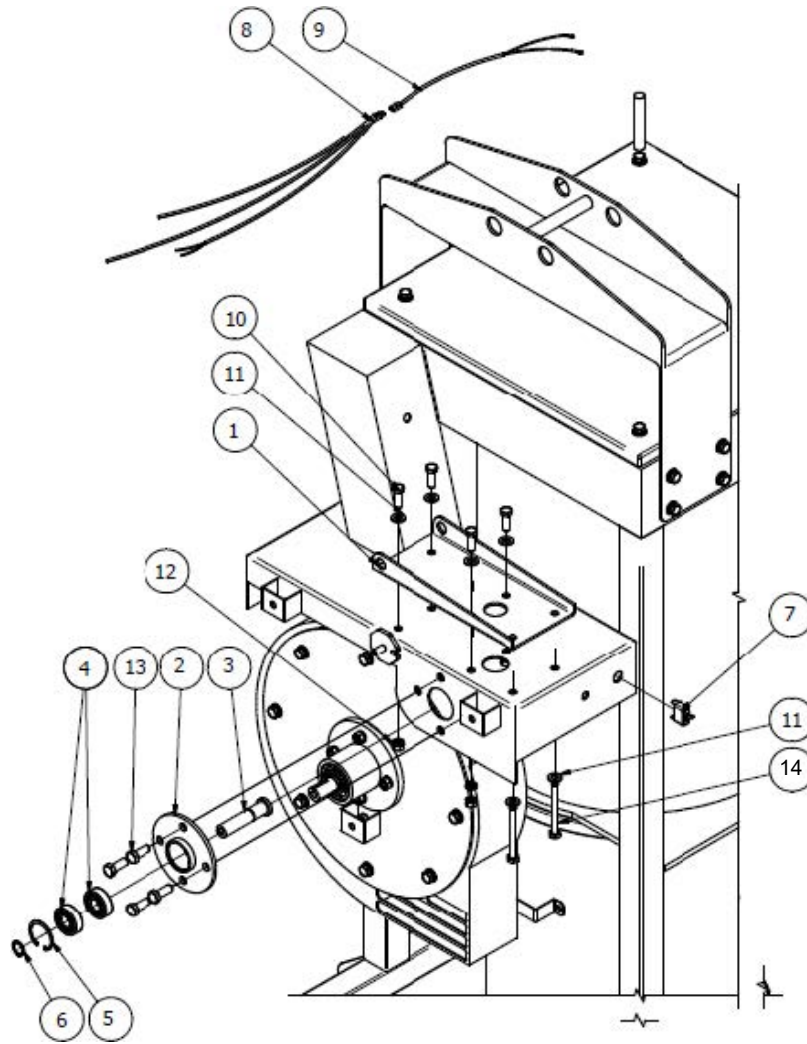
| ITEM | DP #    | QTY | DESCRIPTION       |
|------|---------|-----|-------------------|
| 1    | 2508890 | 1   | M6X15 SOC SCREW   |
| 2    | 2508584 | 1   | SPRING            |
| 3    | 2508888 | 4   | M6 NUT            |
| 4    | 2509147 | 4   | M6 SPRING WASHER  |
| 5    | 2508757 | 2   | M6X20 SOC SCREW   |
| 6    | 2508889 | 2   | M6 WASHER         |
| 7    | 2508894 | 2   | M5 FLANGE NUT     |
| 8    | 2508744 | 1   | SHAKE BAR BRACKET |
| 9    | 2508746 | 1   | FLAT BLUE CHIP    |
| 10   | 2508895 | 2   | M5 BOLT SET       |
| 11   | 2508753 | 2   | M6X8 SET SCREW    |
| 12   | 2508745 | 1   | SHAKE BAR COLLAR  |

# Pulley Assembly



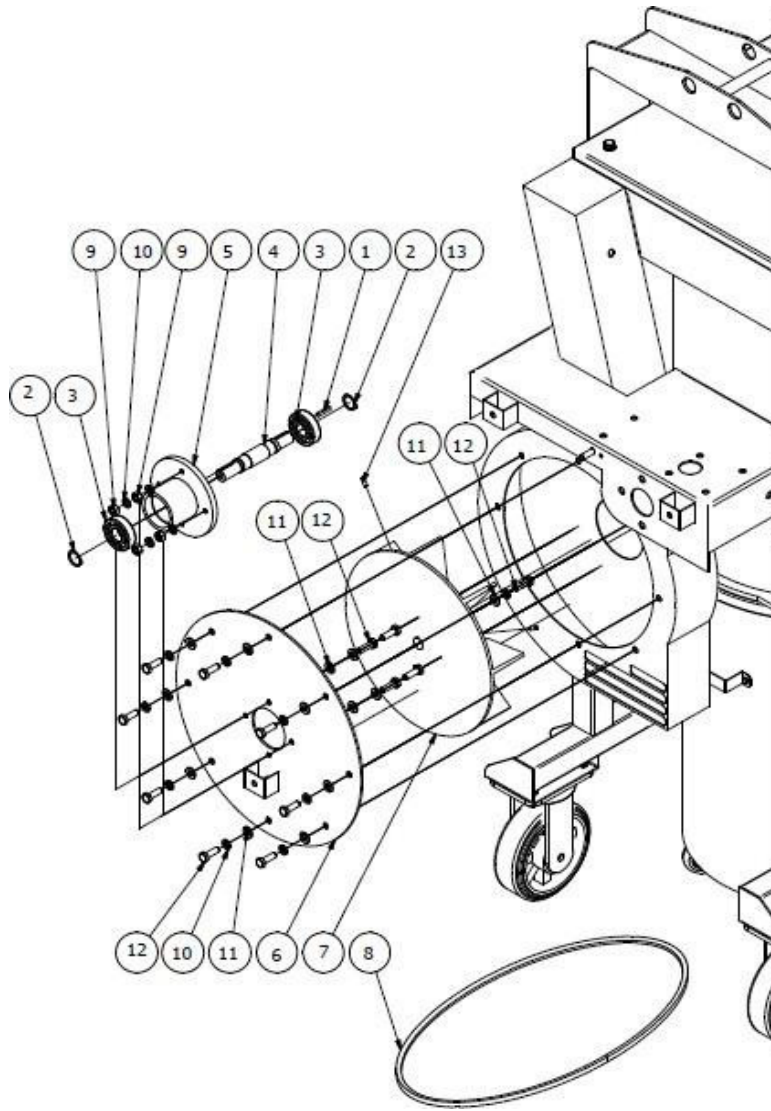
| ITEM | DP #    | QTY | DESCRIPTION                              |
|------|---------|-----|--|
| 1    | 2508857 | 1   | ENGINE STAND UPPER PART                  |
| 2    | 2508850 | 2   | NSK 6200 BEARING                         |
| 3    | 2508846 | 1   | TENSIONER PULLEY                         |
| 4    | 2508848 | 1   | PULLEY TENSIONER                         |
| 5    | 2508854 | 1   | TENSIONER WASHER                         |
| 6    | 2508868 | 1   | IMPELLER PULLEY                          |
| 7    | 2508852 | 2   | KEY 5 x 5                                |
| 8    | 2508851 | 1   | SUPPORT PULLEY                           |
| 9    | 2508899 | 1   | M16X170 SOC SCREW                        |
| 10   | 2508884 | 4   | M10 SPRING WASHER                        |
| 11   | 2508886 | 8   | M10 NUT                                  |
| 12   | 2508898 | 1   | M10X70 BOLT                              |
| 13   | 2508885 | 6   | M10 WASHER                               |
| 14   | 2508887 | 1   | M10X30 BOLT                              |
| 15   | 2508897 | 4   | M6X16 SET SCREW                          |
| 16   | 2801502 | 1   | TACHOMETER/HOUR METER (Mounted to Frame) |

# Impeller Housing



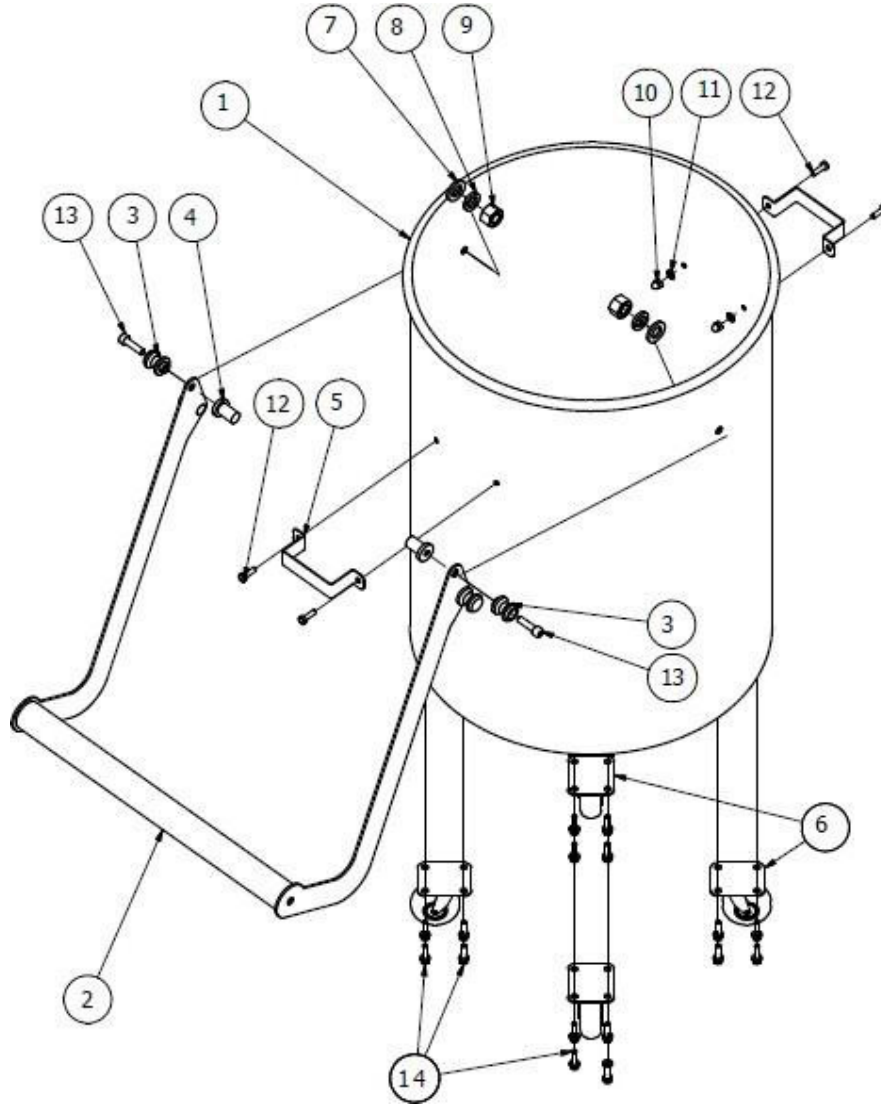
| ITEM | DP #    | QTY | DESCRIPTION                      |
|------|---------|-----|----------------------------------|
| 1    | 2508858 | 1   | ENGINE STAND BELOW PART          |
| 2    | 2508862 | 1   | ASSISTING PULLEY BEARING HOUSING |
| 3    | 2508860 | 1   | ASSISTING PULLEY SHAFT           |
| 4    | 2508861 | 2   | BEARING                          |
| 5    | 2508855 | 1   | 47X1.8 SNAP RING(INSIDE)         |
| 6    | 2508856 | 1   | 20X1.2 SNAP RING(OUTSIDE)        |
| 7    | 2508585 | 1   | ON/ OFF SWITCH                   |
| 8    | 2508859 | 1   | ENGINE & MOTOR WIRE              |
| 9    | 2508867 | 1   | BATTERY WIRE                     |
| 10   | 2508887 | 4   | M10X30 BOLT                      |
| 11   | 2508885 | 4   | M10 WASHER                       |
| 12   | 2508886 | 4   | M10 NUT                          |
| 13   | 2508936 | 4   | M12X30 BOLT SET                  |
| 14   | 2508935 | 2   | M10X90 HEX BOLT                  |

# Impeller



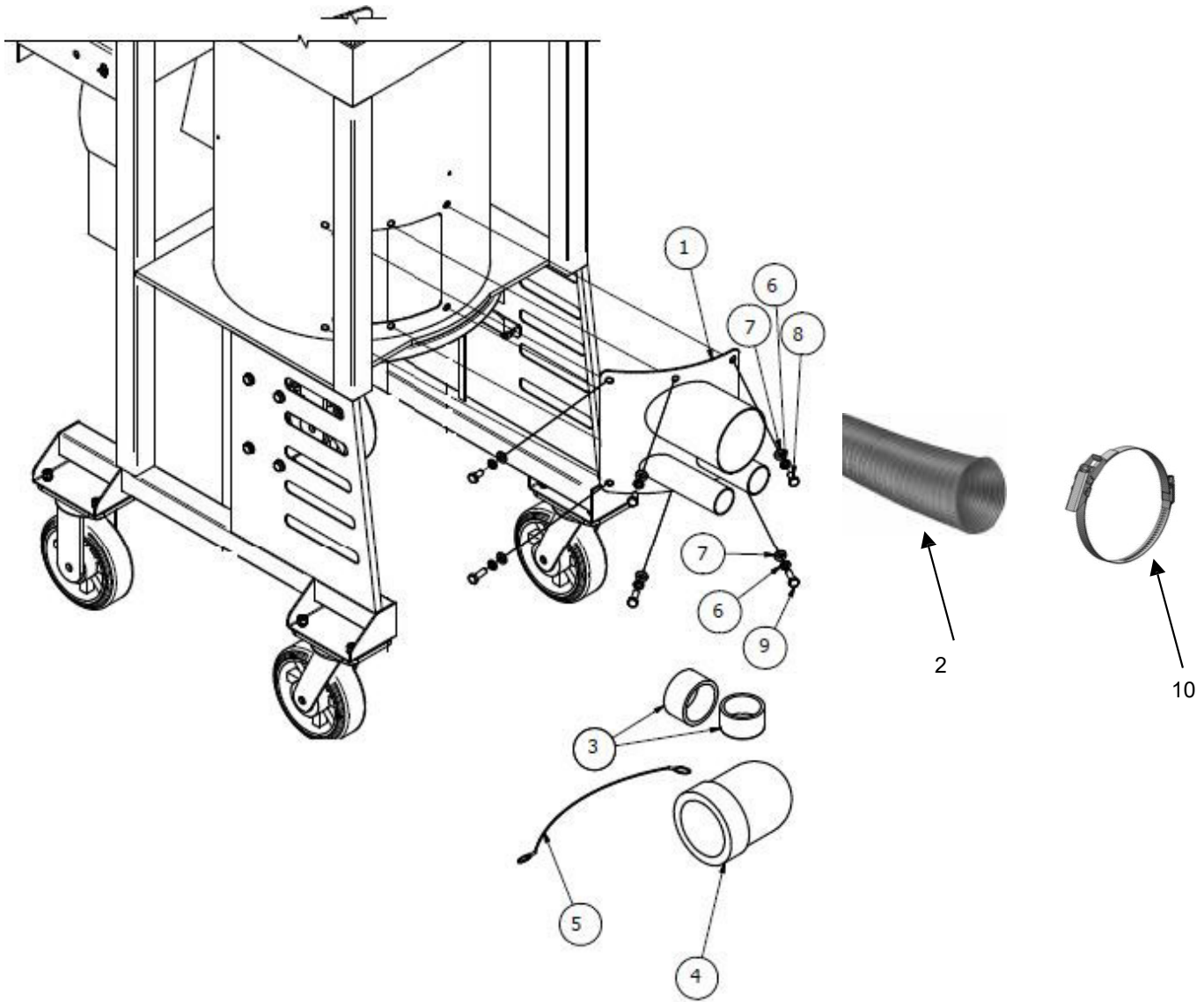
| ITEM | DP #    | QTY | DESCRIPTION               |
|------|---------|-----|---------------------------|
| 1    | 2508852 | 2   | KEY 5 x 5                 |
| 2    | 2508876 | 2   | 25X1.2 SNAP RING(OUTSIDE) |
| 3    | 2508869 | 2   | NSK 6305 BEARING          |
| 4    | 2508865 | 1   | IMPELLER SHAFT            |
| 5    | 2508866 | 2   | IMPELLER BEARING HOUSING  |
| 6    | 2508864 | 1   | IMPELLER COVER            |
| 7    | 2508863 | 2   | IMPELLER BLOWER WHEEL     |
| 8    | 2508870 | 1   | BELT B-48                 |
| 9    | 2508886 | 4   | M10 NUT                   |
| 10   | 2508884 | 12  | M10 SPRING WASHER         |
| 11   | 2508885 | 16  | M10 WASHER                |
| 12   | 2508887 | 12  | M10X30 BOLT               |
| 13   | 2508897 | 1   | M6X16 SET SCREW           |

# Dust Drum



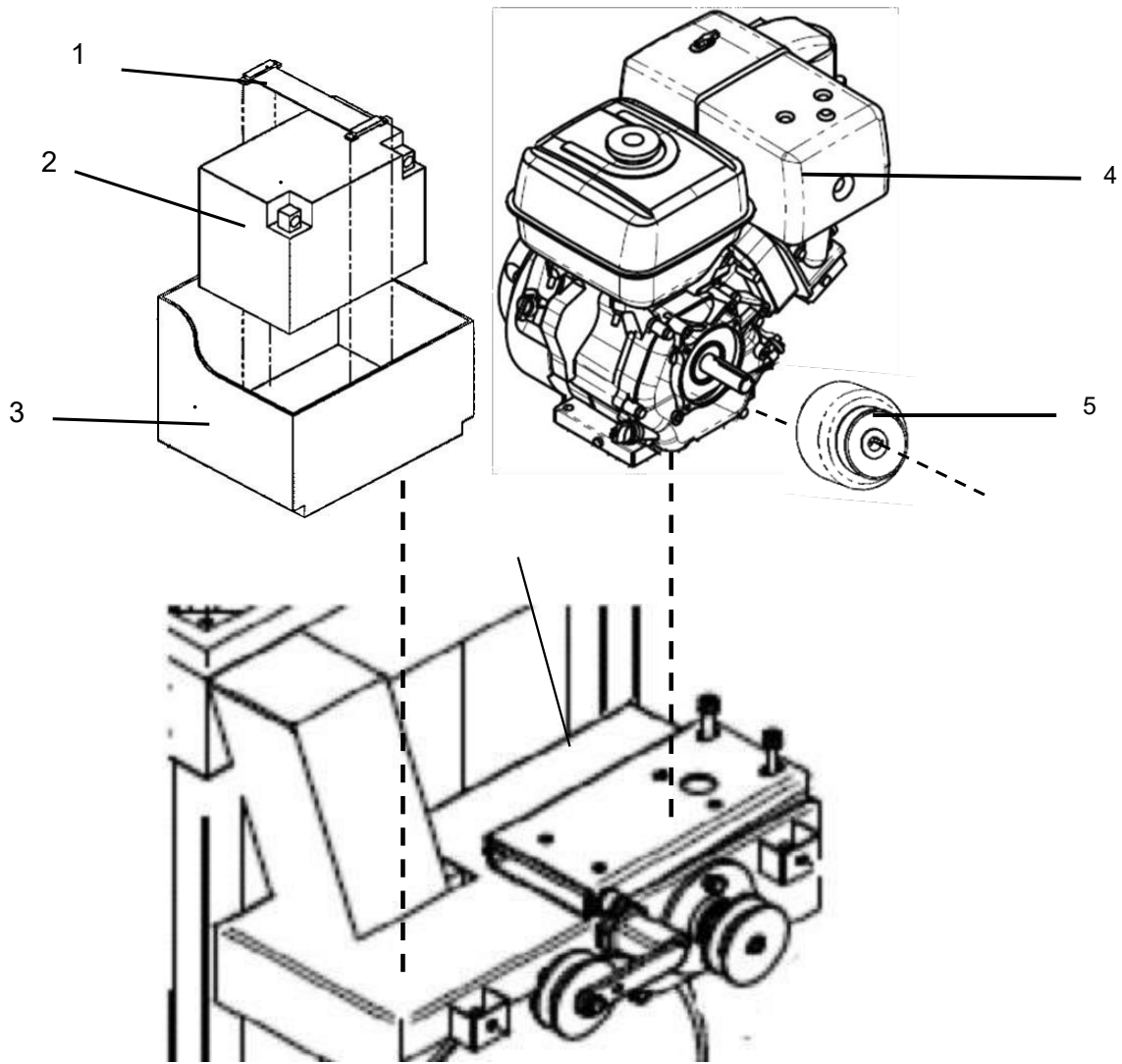
| ITEM | DP #    | QTY | DESCRIPTION          |
|------|---------|-----|----------------------|
| 1    | 2508874 | 1   | DUST DRUM            |
| 2    | 2508871 | 1   | DUST DRUM LEVER      |
| 3    | 2509432 | 2   | LEVER PARTS          |
| 4    | 2509431 | 2   | LEVER BUSHING        |
| 5    | 2508877 | 2   | DUST DRUM HANDLE     |
| 6    | 2508875 | 4   | DUST DRUM WHEEL 2.5" |
| 7    | 2509435 | 2   | M18 WASHER           |
| 8    | 2509434 | 2   | M18 SPRING WASHER    |
| 9    | 2509433 | 2   | M18 NUT              |
| 10   | 2508941 | 4   | M6 CAP NUT           |
| 11   | 2508889 | 4   | M6 WASHER            |
| 12   | 2508940 | 4   | M6X20 BOLT SET       |
| 13   | 2509436 | 2   | M10X30 SOC SCREW     |
| 14   | 2508942 | 16  | M6X25 FLANGE NUT     |

# Hose Inlet



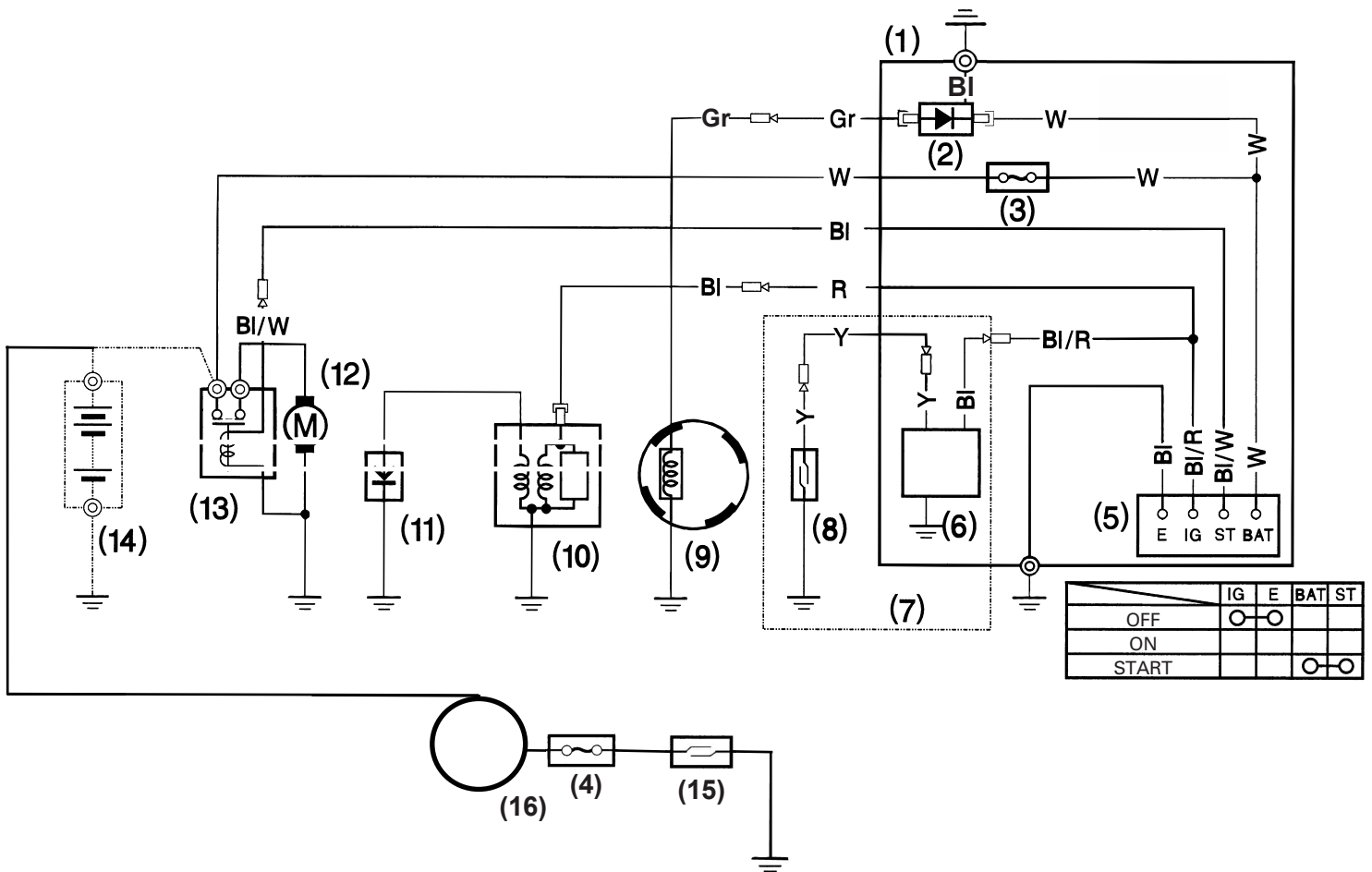
| ITEM | DP #    | QTY | DESCRIPTION                     |
|------|---------|-----|---------------------------------|
| 1    | 2508878 | 1   | 5" HOSE INLET                   |
|      | 2508953 | 1   | 3" HOSE INLET (FOR 3" VAC)      |
| 2    | 2505835 | 1   | 5"x15' HOSE                     |
|      | 2505578 | 1   | 3"x15' HOSE (FOR 3" VAC)        |
| 3    | 2509169 | 2   | INLET COVER(SMALL)              |
| 4    | 2508881 | 1   | INLET COVER(LARGE)              |
|      | 2508957 | 2   | 3" TWIST-TITE PLUG (FOR 3" VAC) |
| 5    | 2508882 | 1   | INLET WIRE                      |
| 6    | 2508884 | 6   | M10 SPRING WASHER               |
| 7    | 2508885 | 6   | M10 WASHER                      |
| 8    | 2508883 | 3   | M10x20 BOLT                     |
| 9    | 2508887 | 3   | M10X30 BOLT                     |
| 10   | 2505870 | 2   | 5" HOSE CLAMP                   |
|      | 2508956 | 2   | 3" HOSE CLAMP (FOR 3" VAC)      |

# Engine



| ITEM | DP #    | QTY | DESCRIPTION                        |
|------|---------|-----|------------------------------------|
| 1    | 2508934 | 1   | BATTERY STRAP                      |
| 2    | 2802378 | 1   | BATTERY                            |
| 3    | 2508946 | 1   | BATTERY BOX                        |
|      | 4244139 | 1   | BOX RUBBER                         |
| 4*   | 2601110 | 1   | HONDA ENGINE                       |
|      | 2600748 | 1   | VANGUARD ENGINE                    |
| 5    | 2505868 | 1   | CLUTCH                             |
|      | 2801029 | 1   | FUSE HOLDER (not shown)            |
|      | 2801367 | 1   | E-STOP (CVG1-B ONLY) (not shown)   |
|      | 2509405 | 1   | RECTIFIER ASSEMBLY (not shown)     |
|      | 2509406 | 1   | SUB-WIRE ASSEMBLY (not shown)      |
|      | 2509407 | 1   | OIL ALERT UNIT (not shown)         |
|      | 2509408 | 2   | IGNITION KEY (not shown)           |
|      | 2703698 | 1   | IGNITION SWITCH AND KEY(not shown) |
|      | 6058556 | 1   | HOSE ADAPTER KIT (not shown)       |

# CVG1 Wiring Diagram



- |                       |                          |
|-----------------------|--------------------------|
| (1) CONTROL PANNEL    | (9) CHARGING COIL        |
| (2) RECTIFIER         | (10) IGNITION COIL       |
| (3) IGNITION FUSE     | (11) SPARK PLUG          |
| (4) FILTER MOTOR FUSE | (12) STARTER MOTOR       |
| (5) ENGINE SWITCH OIL | (13) STARTER SOLENOID    |
| (6) ALERT UNIT        | (14) BATTERY (12 V)      |
| (7) OIL ALERT TYPE    | (15) FILTER MOTOR SWITCH |
| (8) OIL LEVEL SWITCH  | (16) FILTER MOTOR        |

|    |        |    |             |
|----|--------|----|-------------|
| Bl | Black  | Br | Brown       |
| Y  | Yellow | O  | Orange      |
| Bu | Blue   | Lb | Light blue  |
| G  | Green  | Lg | Light green |
| R  | Red    | P  | Pink        |
| W  | White  | Gr | Gray        |







## **EQUIPMENT AND PARTS WARRANTY**

Diamond Products warrants all equipment manufactured by it against defects in workmanship or materials for a period of one (1) year from the date of shipment to Customer.

The responsibility of Diamond Products under this Warranty is limited to replacement or repair of defective parts at Diamond Products' Elyria, Ohio factory, or at a point designated by it, of such parts as shall appear to us upon inspection at such parts, to have been defective in material or workmanship, with expense for transportation and labor borne by Customer.

In no event shall Diamond Products be liable for consequential or incidental damages arising out of the failure of any Product to operate properly.

Integral units such as engines, electric motors, batteries, transmissions, etc., are excluded from this Warranty and are subject to the prime manufacturer's warranty.

**THIS WARRANTY IS IN LIEU OF ALL OTHER WARRANTIES, EXPRESSED OR IMPLIED, AND ALL SUCH OTHER WARRANTIES ARE HEREBY DISCLAIMED.**



333 Prospect Street, Elyria, Ohio 44035  
(440) 323-4616 • (800) 321-5336 • Fax (800) 634-4035  
[www.diamondproducts.com](http://www.diamondproducts.com)