



**CORE POWER
PARTS LIST**

**CP38KXL
HYDRAULIC POWER UNIT**

NOVEMBER 2022

Part #: 1803689-00

Proposition 65
State of California

Warning !

Engine exhaust and some its constituents are known to the State of California to cause cancer, birth defects, and/or other reproductive harm.

Notification of Spark Arrester Requirement for
State of California

It is a violation of Section 4442 or 4443 to use or operate the engine on any forest-covered, brush-covered, or grass-covered land unless the engine is equipped with a spark arrester, as defined in Section 4442, maintained in effective working order or the engine is constructed, equipped, and maintained for the prevention of fire pursuant to Section 4443.

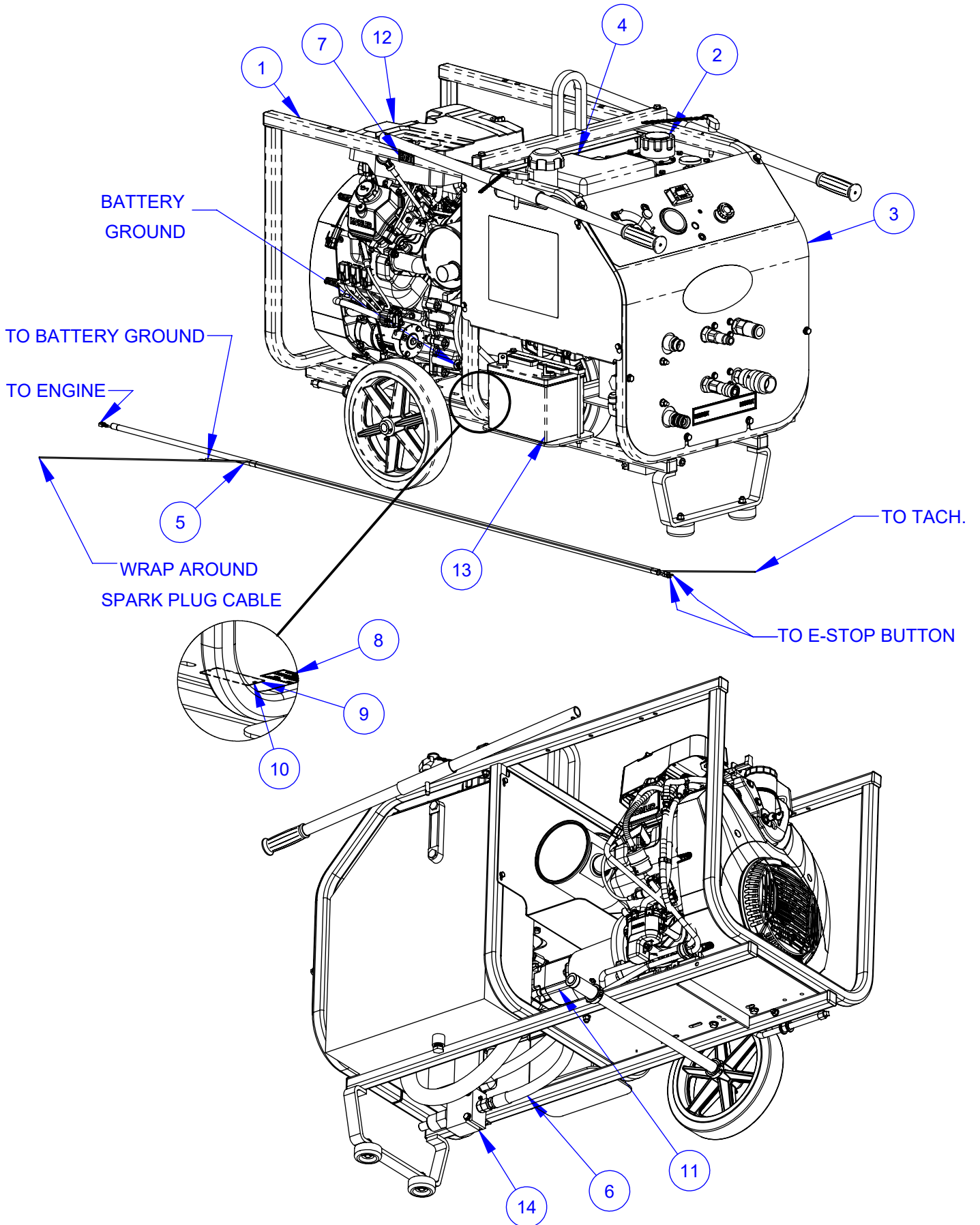
Table of Contents

<u>Description</u>	<u>Page No.</u>
CB38KXL Hydraulic Power Supply	4
Frame Base Assembly	6
Kohler Engine Assembly	8
Battery Assembly	9
Pump Assembly.....	10
Fuel Tank Assembly	11
Vent Line Hose Assembly.....	12
Relief Valve Assembly	13
Hydraulic Tank Assembly	14
CB38KXL Panel Assembly.....	16
Hose Kit.....	19
Air to Cooler Option	20
Tool Tray Option.....	22
Hydraulic Schematic	23
Electric Schematic.....	24
Notes	25
Warranty information	26

Engine Quick Reference

DP Part No.	Description	Manufactures Part No.
2704987	Low Profile Pre-Cleaner	62 083 03-S
2704988	Air Filter	62 083 04-S
2500201	Fuel Filter	Fram G1 or Wix 33001
2704136	Engine Oil Filter	52 050 02-S
2702623	Spark Plugs	62 132 04-S

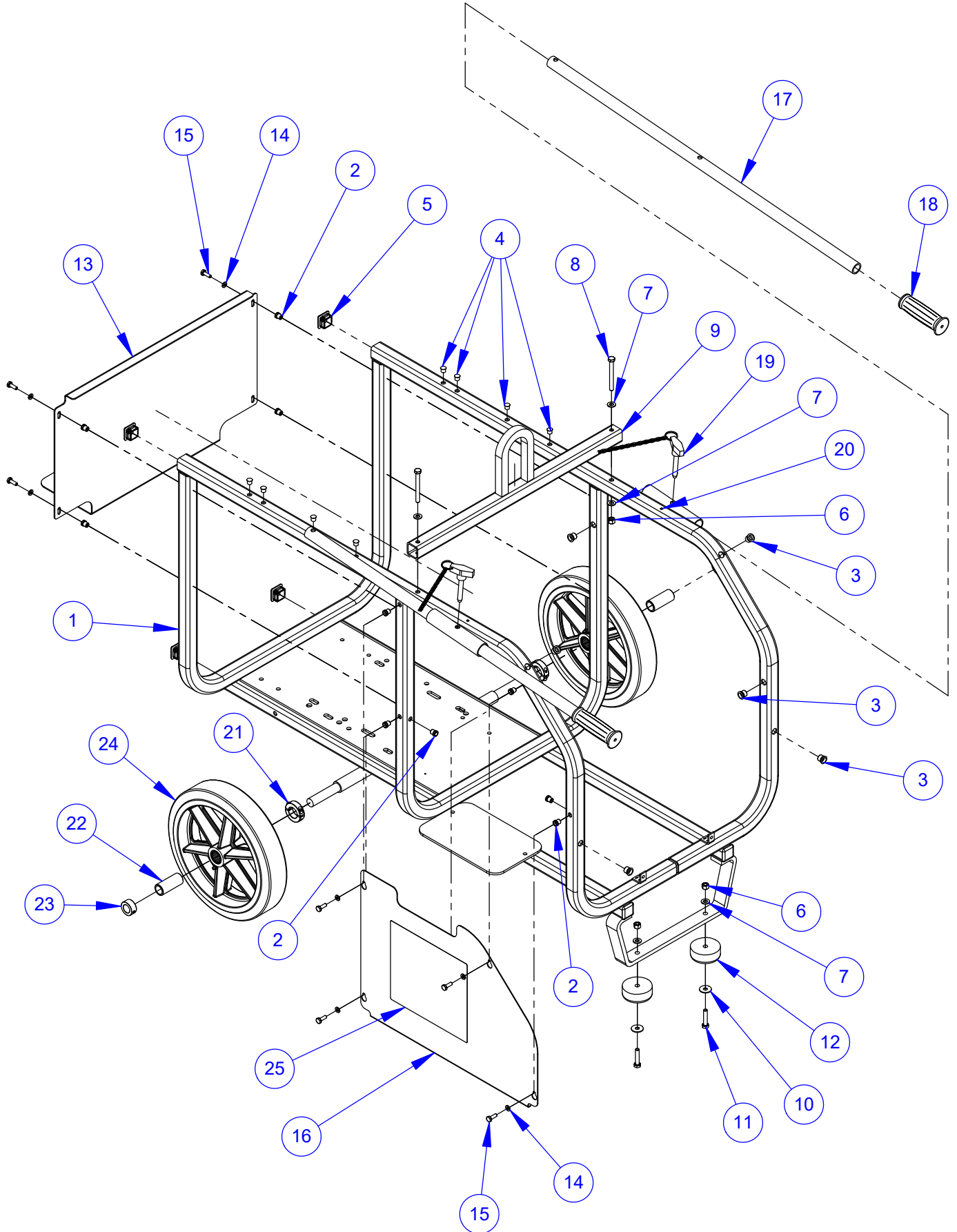
CB38KXL Hydraulic Power Supply #4646237



CB38KXL Hydraulic Power Supply #4646237

ITEM	PART NO.	QTY.	DESCRIPTION
1	4646260	1	CB38 Frame Assembly
2	4646173	1	Hydraulic Tank Assembly
3	4646249	1	Panel Assembly, CB38
4	4600229	1	Fuel Tank Assembly
5	4646263	1	Harness, CB38K E-Stop, HR. Meter
6	4646209	1	Hose Kit, CB35, CB40
7	1800537	1	Label, HOT
8	1801716	1	Decal, EPA EVAP Standard
9	1800169	1	Serial Number Plate, US
10	2900053	2	Rivet, 3/32" Dia.
11	4640132	1	Pump Assembly
12	4640133	1	38HP Kohler Engine Assembly
13	4646252	1	Battery Assembly
14	4646253	1	Relief Valve Assembly

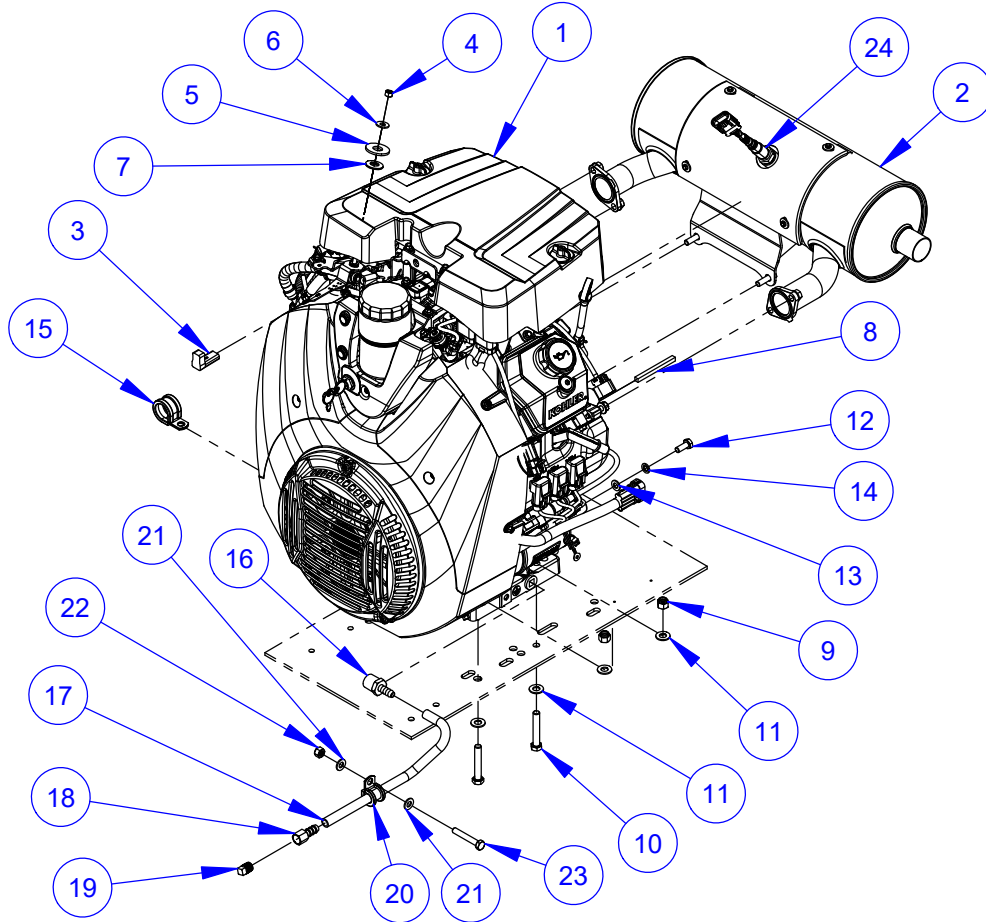
CB38KXL Frame Base Assembly #4646260



CB38KXL Frame Base Assembly #4646260

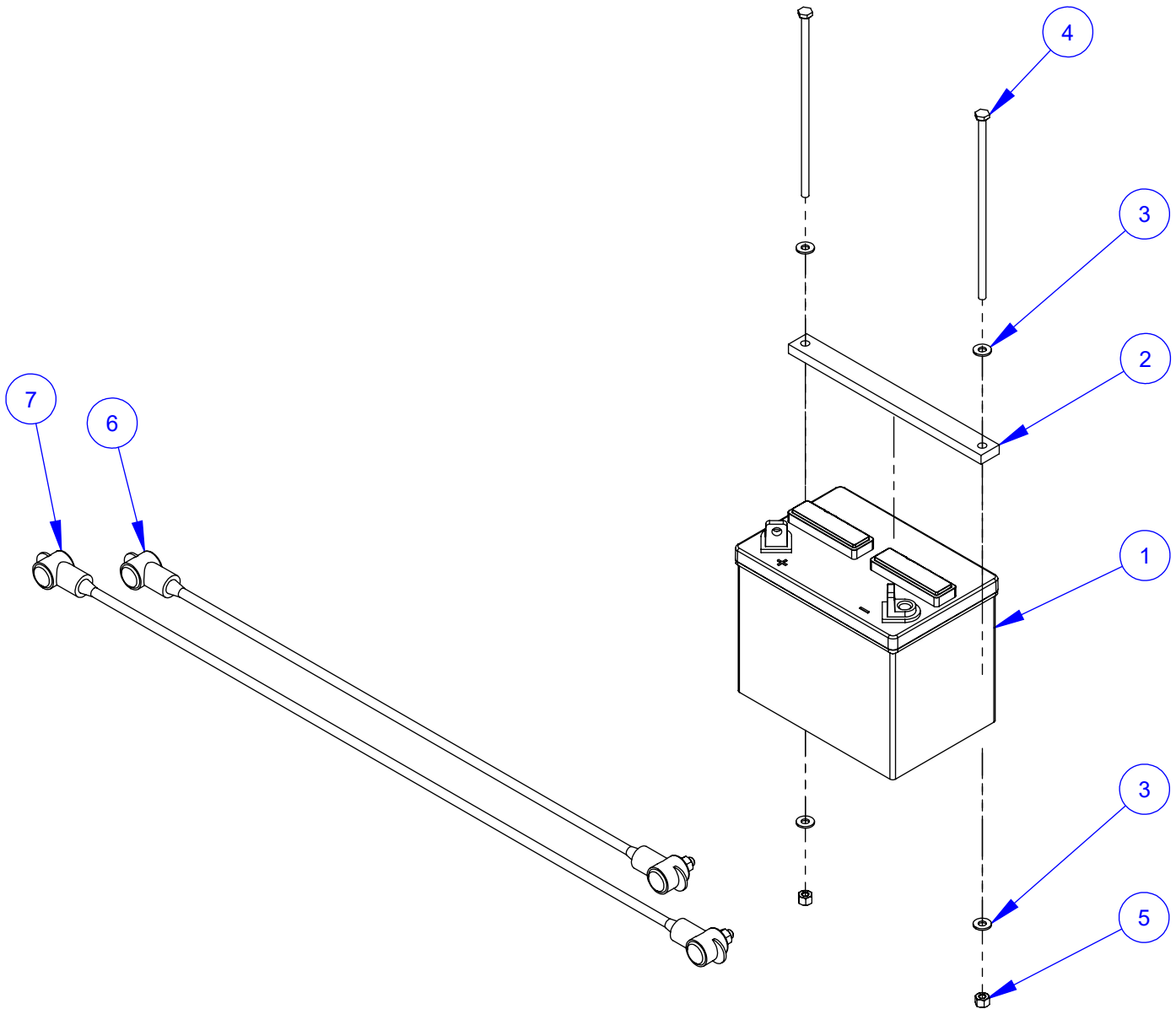
ITEM	PART NO.	QTY.	DESCRIPTION
1	2400670	1	CB Frame Weldment
2	2900441	10	Rivet Nut, 1/4-20 Round
3	2900419	6	Rivet Nut, 5/16-18 Round
4	2500462	8	Plug, 3/8" Hole
5	2504968	6	Cap, 1-1/4" Sq. Tube
6	2900039	4	Lock Nut, 5/16-18 Nylon
7	2900022	6	Flat Washer, 5/16" SAE
8	2900248	2	Cap Screw, Hex Hd., 5/16-18 x 3"
9	4646003	1	Lifting Bar
10	2901103	2	Fender Washer, 5/16" x 1"
11	2900508	2	Cap Screw, Hex Hd., 5/16-18 x 1-1/2"
12	2501767	2	Rubber Bumper
13	4646262	1	Heat Shield
14	2900024	8	Lock Washer, 1/4" Split
15	2900144	8	Cap Screw, Hex Hd., 1/4-20 x 3/4"
16	4646049	1	Side Panel
17	4646006	2	Handle
18	2500636	2	Handle Grip
19	2900257	2	Lock Pin, T Handle, 3/8"
20	2900053	2	Rivet, 3/32" Dia.
21	2505281	2	Set Collar, 1" ID (2 Piece)
22	6011774	2	Bushing, .75 x 1.00 x 2.38L
23	2400615	2	Set Collar, 3/4"
24	2505179	2	Wheel 12" X 2-3/4" X 1"
25	1802745	1	Decal, Core Bore CB38

38HP Kohler Engine Assembly #4640133



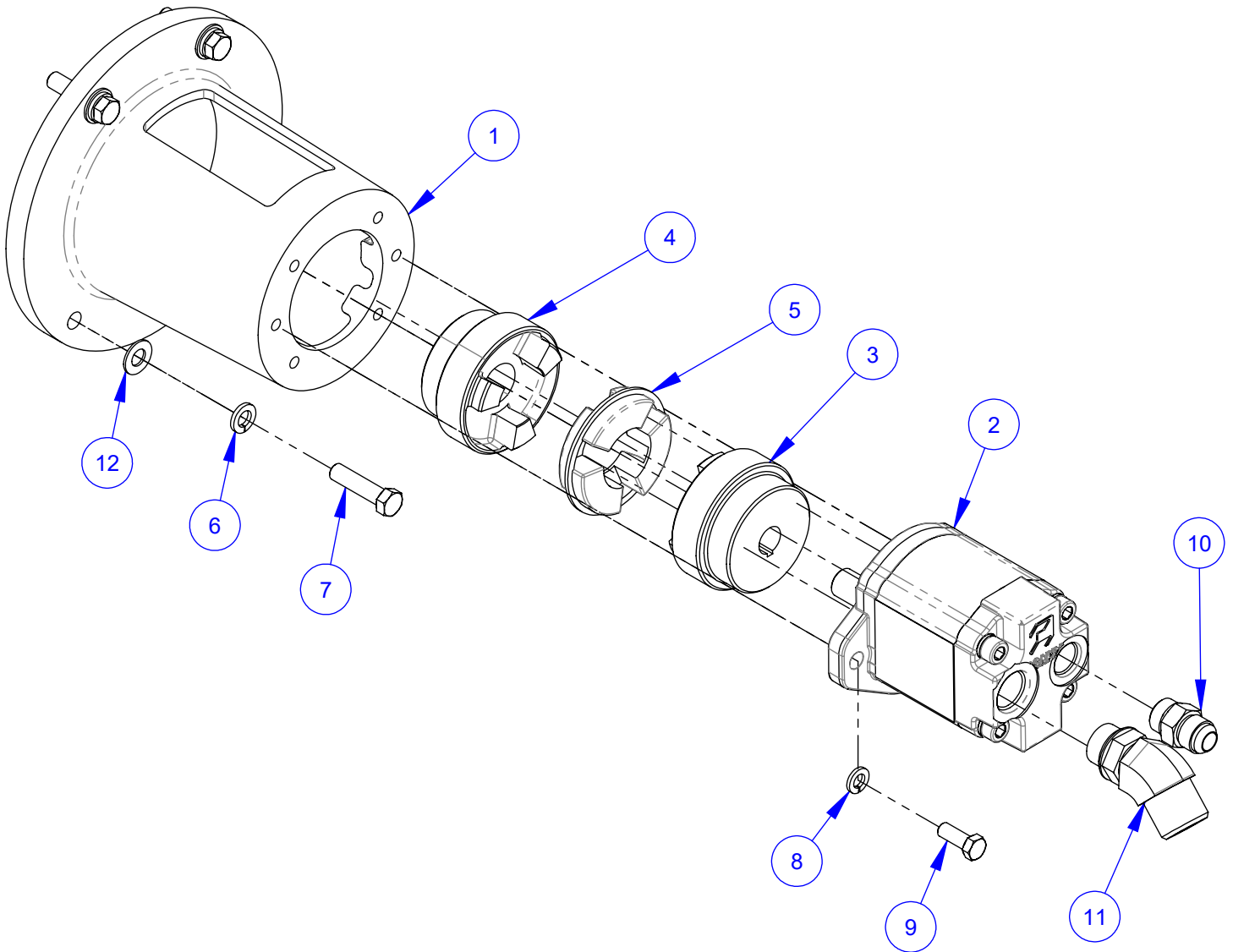
ITEM	PART NO.	QTY.	DESCRIPTION
1	2600847	1	38HP Kohler Command Pro, EFI Engine
2	2703687	1	Muffler, Kohler ECH980 38HP EFI
3	2706290	1	Knob, Controller Lever
4	2900302	1	Lock Nut, M6-1.0 Nylon Insert
5	2900127	1	Flat Washer, 1/2" USS
6	2900126	1	Flat Washer, 1/4" USS
7	2900665	2	Belleville Washer, 1/2"
8	6047977	1	Key, 1/4" Sq. x 3"
9	2900018	4	Lock Nut, 3/8-16 Nylon
10	2900079	4	Cap Screw, Hex Hd., 3/8-16 x 2-1/4"
11	2900014	8	Flat Washer, 3/8" SAE
12	2900329	1	Capscrew, Hex Hd., M8 x 1.25 x 20mm
13	2901336	1	Flat Washer, M8
14	2900763	1	Lock Washer, M8 Split
15	3201729	1	Hose Clamp, 1" x 3/4" Wide
16	3200234	1	Fitting, 1/2" MPT to 3/8" Hose Barb
17	4641178	1	Oil Drain Hose, 3/8" I.D. x 12"
18	3200031	1	Fitting, 1/4" F. Pipe to 3/8" Hose Barb
19	3200206	1	Pipe Plug, 1/4" NPT
20	2501434	1	Hose Clamp, 5/8" x 3/4" Wide
21	2900022	2	Flat Washer, 5/16" SAE
22	2900039	1	5/16"-18 Nylock Hex Nut
23	2900494	1	Cap Screw, Hex Hd., 5/16-18 x 2"
24	2705235	1	Oxygen Sensor

Battery Assembly #4646252



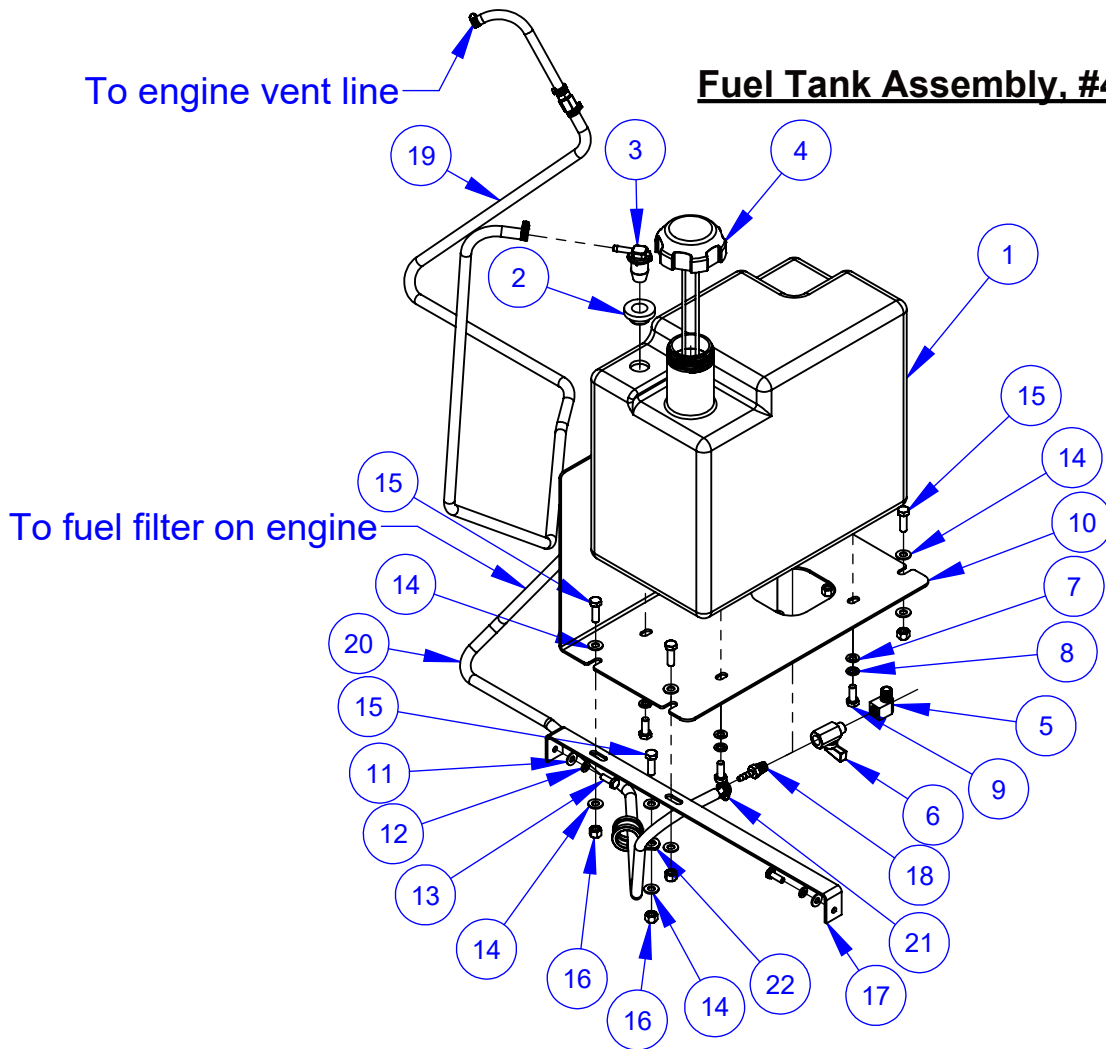
ITEM	PART NO.	QTY.	DESCRIPTION
1	2500584	1	Battery, 12 Volt Group Size U1
2	4646122	1	BatterySupport
3	2900009	4	Flat Washer, 1/4" SAE
4	2901405	2	Cap Screw, Hex Hd., 1/4-20 x 7-1/2"
5	2900010	2	Lock Nut, 1/4-20 Nylon
6	4646015	1	Battery Cable Assy., Red
7	4646016	1	Battery Cable Assy., Black

Pump Assembly #4640132



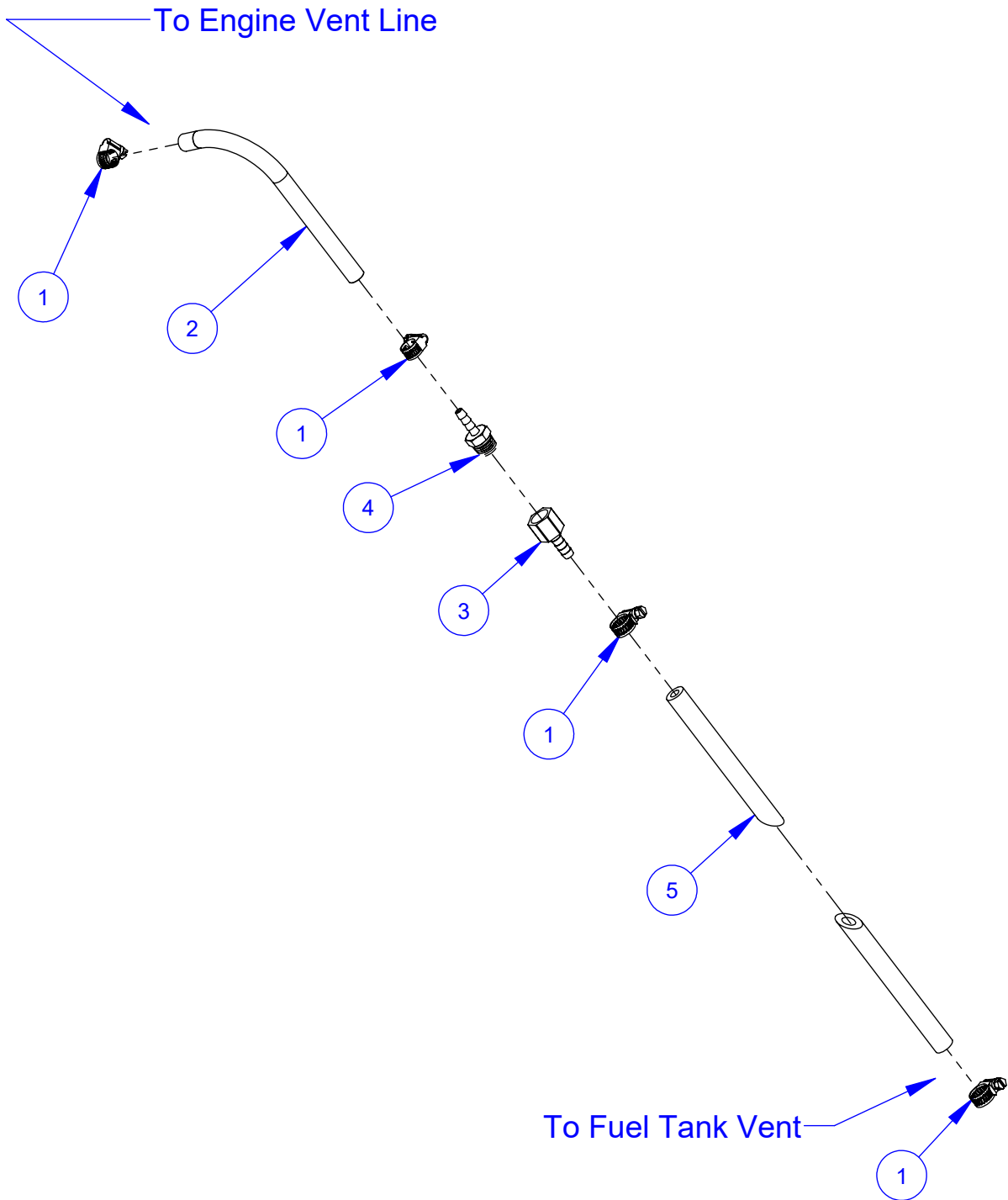
ITEM	PART NO.	QTY.	DESCRIPTION
1	4641175	1	Motor/Pump Adapter
2	2600569	1	Pump, 1.0 CI, 2 Bolt SAE
3	2400325	1	Shaft Coupling, 3/4" Bore
4	2400326	1	Shaft Coupling, 1-1/8" Bore
5	2400323	1	Coupling Insert
6	2900238	4	7/16" Lock Washer, Split
7	2900149	4	Cap Screw, Hex Hd., 7/16-14 x 1-3/4"
8	2900006	2	Lock Washer, 3/8" Split
9	2900005	2	Cap Screw, Hex Hd., 3/8-16 x 1"
10	3202079	1	5/8" O-Ring - 5/8" MJIC
11	3201881	1	1" MJIC - 3/4" MOR, 45 Deg.
12	2900956	4	Flat Washer, 7/16" SAE

Fuel Tank Assembly, #4600229



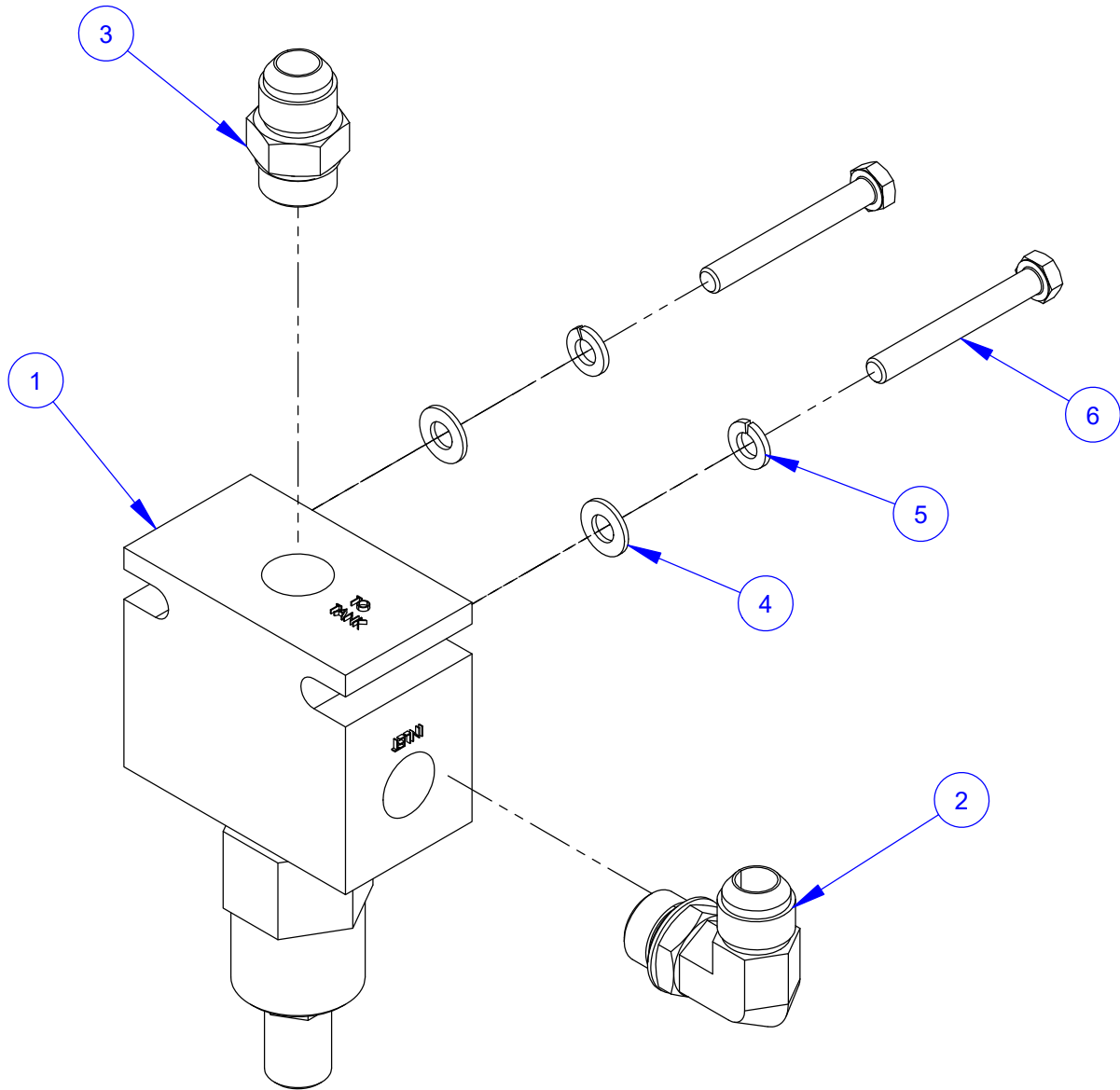
ITEM	PART NO.	QTY.	DESCRIPTION
1	6010869	1	Fuel Tank, 4.4 Gallon
2	2506716	1	Grommet
3	2502484	1	Roll Over Vent, 1/4" Hose Barb
4	2503294	1	Fuel Tank Cap, W/Gage
5	3200012	1	Street Elbow, 1/4" NPT
6	3200108	1	Ball Valve, 1/4" NPT
7	2901336	4	M8 Washer
8	2900763	4	Lock Washer, M8 Split
9	2900329	4	Capscrew, Hex Hd., M8 x 1.25 x 20mm
10	4646261	1	Gas Tank Mounting Plate
11	2900009	2	Flat Washer, 1/4" SAE
12	2900024	2	Lock Washer, 1/4" Split
13	2900144	2	Cap Screw, Hex Hd., 1/4-20 x 3/4"
14	2900022	10	Flat Washer, 5/16" SAE
15	2900138	5	Cap Screw, Hex Hd., 5/16-18 x 1"
16	2900039	5	Lock Nut, 5/16-18 Nylon
17	4646035	1	Fuel Tank Support
18	3200019	1	Fitting, 1/4" M. Pipe to 1/4" Hose Barb
19	4641180	1	Hose Assembly, Vent Line
20	6019095	1	Fuel Hose, 1/4" ID X 42"
21	3200390	2	Hose Clamp #6
22	3201729	1	Hose Clamp, 1" x 3/4" Wide

Vent Line Hose Assembly #4641180



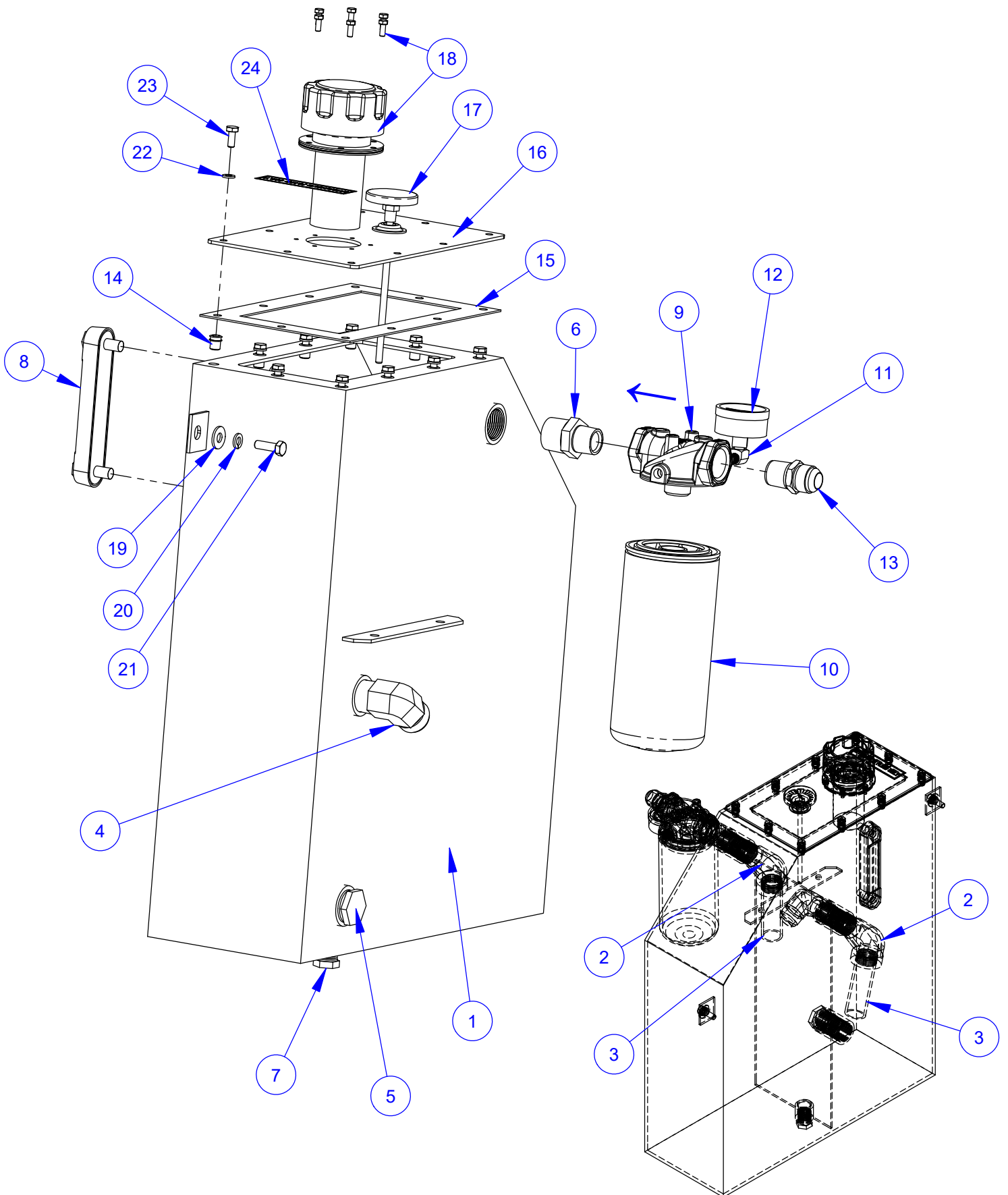
ITEM	PART NO.	QTY.	DESCRIPTION
1	3200062	4	Hose Clamp #4
2	6012261	1	Hose, 3/16" I.D. x 5"
3	3200231	1	Fitting, 1/4 FPT to 1/4 Hose Barb
4	3200210	1	Fitting, 1/4" M. Pipe to 3/16" Hose Barb
5	6011824	1	Hose, 1/4" I.D. x 57" Long

Relief Valve Assembly #4646253



ITEM	PART NO.	QTY.	DESCRIPTION
1	3202318	1	Valve, Relief, 5KSI
2	3202061	1	Fitting, 5/8" MORB x 5/8" MJIC x 90 DEG
3	3202079	1	5/8" O-Ring - 5/8" MJIC
4	2900022	2	Flat Washer, 5/16" SAE
5	2900031	2	Lock Washer, 5/16" Split
6	2900726	2	Cap Screw, Hex Hd., 5/16-18 x 2-1/2"

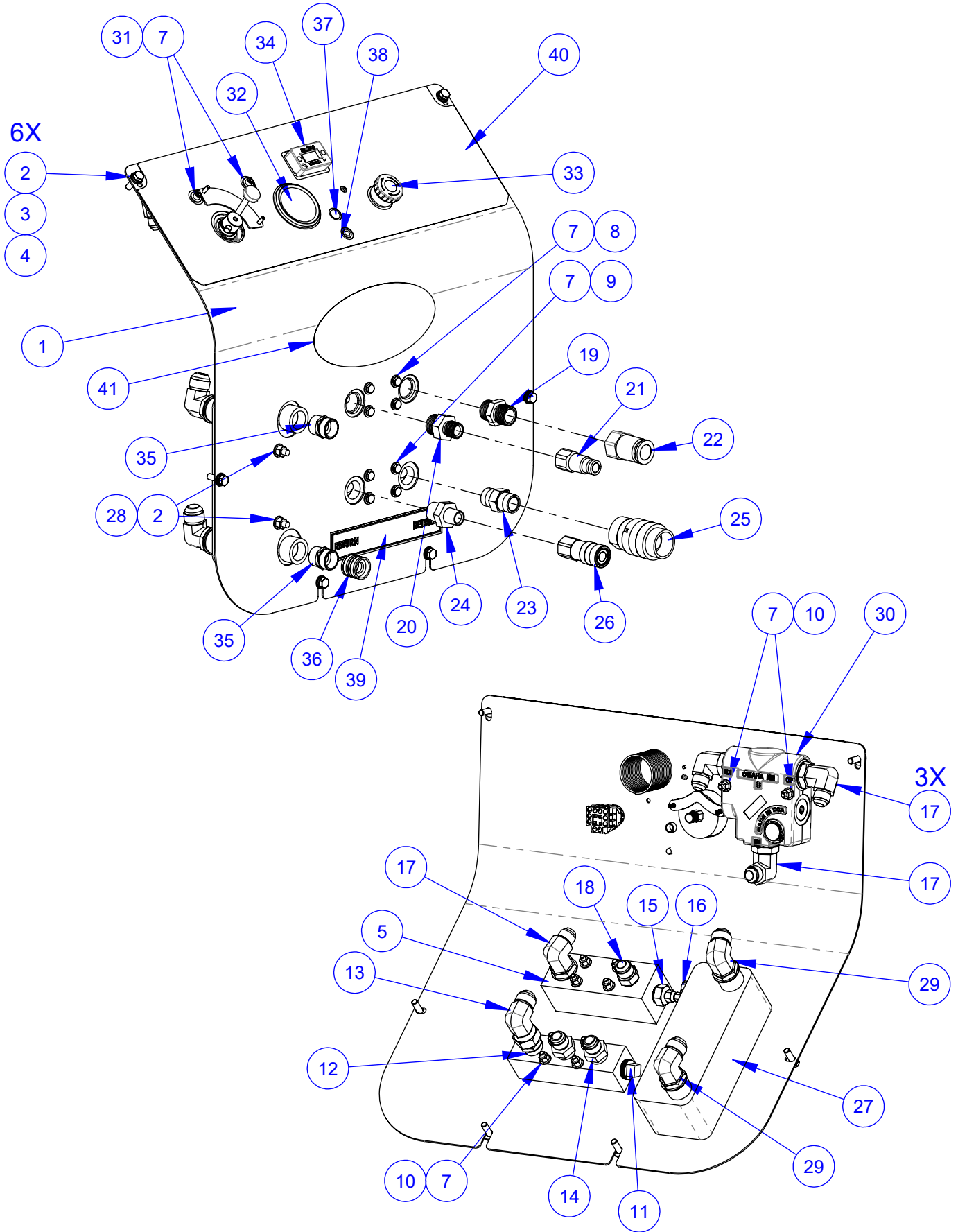
Hydraulic Tank Assembly #4646173



Hydraulic Tank Assembly #4646173

ITEM	PART NO.	QTY.	DESCRIPTION
1	4640120	1	Hydraulic Tank Weldment
2	3200409	2	Street Elbow, 1" NPT
3	3200427	2	Nipple, 1" NPT x 4"
4	3200289	1	Elbow, 1" M. Pipe to 1" M. JIC
5	3200288	1	Plug, 1" NPT
6	3200431	1	Nipple, 1"MPT - 3/4" MPT
7	3200160	1	Plug, 1/2" NPT
8	2400166	1	Sight Gauge, Liquid Level
9	2703290	1	Filter Head, 3/4" NPT
10	3201175	1	Hydraulic Filter Element
11	3200156	1	Street Elbow, 1/8" NPT
12	3200502	1	Gauge, Hydraulic Pressure
13	3200097	1	Adapter, 3/4" M. JIC to 3/4" M. Pipe
14	2900441	10	Rivet Nut, 1/4-20 Round
15	4646083	1	Gasket, Hyd Tank
16	4640121	1	Cover, Hydraulic Tank
17	2800459	1	Thermometer, 2", 0 - 200 F
18	2401305	1	Filler/Breather Cap W/Screen
	2900339	6	Cap Screw, Hex Hd., M5-0.8 x 12mm
19	2900567	2	Flat Washer, 5/16" USS
20	2900031	2	Lock Washer, 5/16" Split
21	2900138	2	Cap Screw, Hex Hd., 5/16-18 x 1"
22	2900024	10	Lock Washer, 1/4" Split
23	2900023	10	Cap Screw, Hex Hd., 1/4-20 x 5/8"
24	1800535	1	Decal, "Hydraulic Fluid Only"

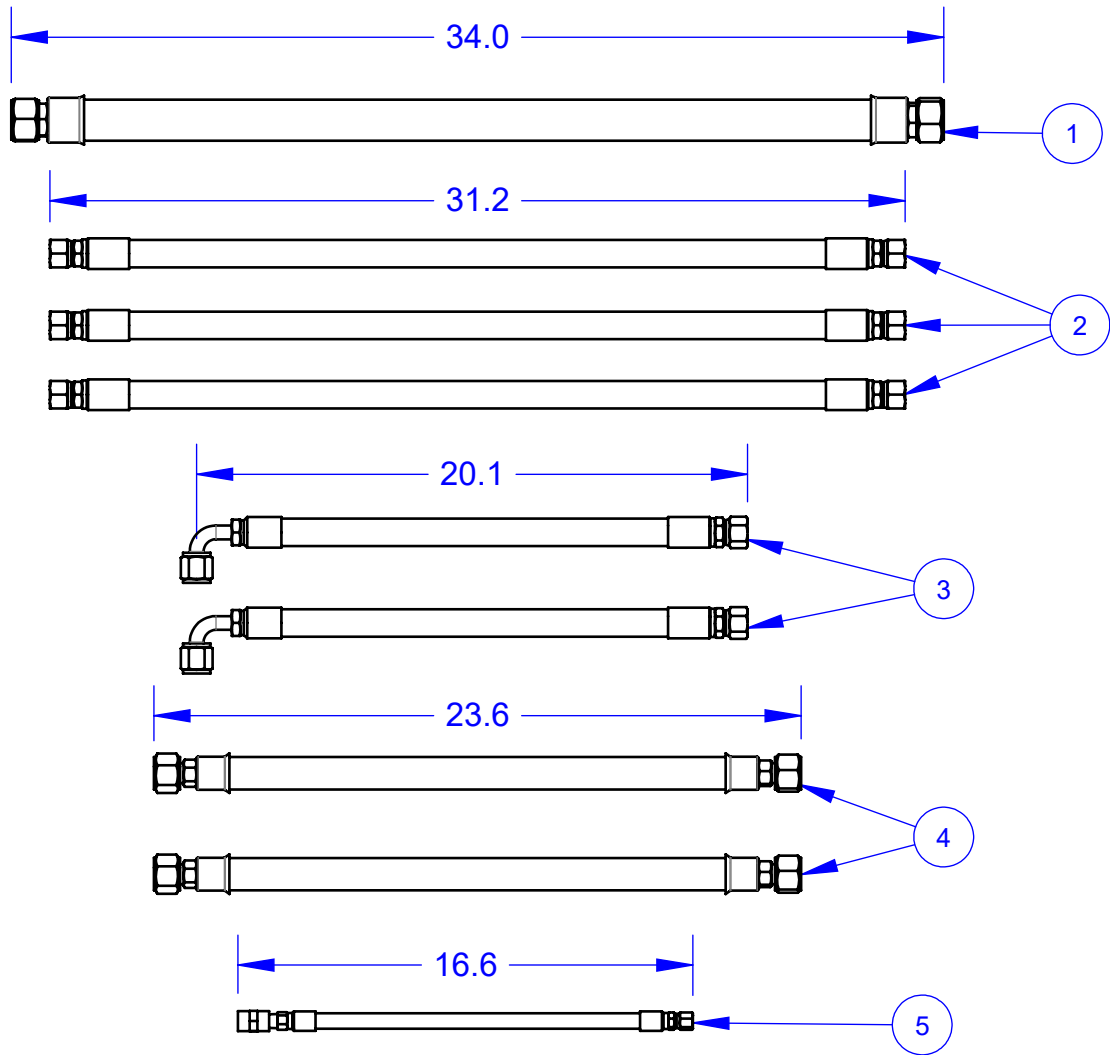
CB38KXL Panel Assembly #4646249



CB38KXL Panel Assembly #4646249

ITEM	PART NO.	QTY.	DESCRIPTION
1	4646141	1	Instrument Panel
2	2900022	8	Flat Washer, 5/16" SAE
3	2900031	6	Lock Washer, 5/16" Split
4	2900138	6	Cap Screw, Hex Hd., 5/16-18 x 1"
5	4645054	1	Manifold, SAE O-Ring, 5/8 & 3/4" Ports
6	4646101	1	Manifold, 3/4 NPT
7	2900009	20	Flat Washer, 1/4" SAE
8	2900667	4	Cap Screw, Hex Hd., 1/4-20 x 3"
9	2901001	4	Cap Screw, Hex Hd., 1/4-20 x 2-1/2"
10	2900010	10	Lock Nut, 1/4-20 Nylon
11	3200479	1	Plug, 3/4" NPT Square Head
12	3200097	1	Adapter, 3/4" M. JIC to 3/4" M. Pipe
13	3200417	1	Elbow, 3/4" F. JIC to 3/4" M. JIC
14	3200082	2	5/8" MJIC TO 3/4" MPT
15	3200626	1	Adapter, 5/8" O-Ring to 1/4" M. JIC
16	3201241	1	Elbow, 1/4" M. JIC to 1/4" F. JIC
17	3202077	4	5/8 MJIC - 3/4" MOR, 90 Deg.
18	3202079	1	5/8" O-Ring - 5/8" MJIC
19	3200330	1	Adapter, 3/4" M. Pipe to 3/4" O-Ring
20	3201899	1	Adapter, 1/2" MPT to 3/4" O-Ring
21	3200105	1	Nipple, 1/2" Q.D.
22	3200101	1	Nipple, 3/4" Quick Disconnect
23	3200137	1	Hex Nipple, 3/4" NPT
24	3200383	1	Nipple, Hex, 3/4" MPT TO 1/2" MPT
25	3200100	1	Coupler, 3/4" Quick Disconnect
26	3200104	1	Coupler, 1/2" Q.D.
27	2400307	1	Heat Exchanger
28	2900303	2	Lock Nut, M8-1.25 Nylon Insert
29	3200400	2	Elbow, 3/4" O-Ring to 3/4" Male JIC
30	3201972	1	Valve, Flow Control, 20 GPM
31	2900245	2	Cap Screw, Soc. Hd., 1/4-20 x 2-5/8"
32	3202413	1	Gauge, Hydraulic, 4000 PSI
33	2801367	1	E-Stop Switch
34	2801789	1	Tach/Hour Meter, W/#6 Screws
35	3201659	2	Fitting, 3/4" M. Pipe to 3/4" M. Garden
36	3200177	1	Fitting, 3/4" F. Garden Union Swivel
37	2500204	1	Plug, 1/2" Hole
38	2503749	1	Plug, 5/16" Hole (Tapered)
39	1800536	1	"Return" Decal
40	1802746	1	Decal, Control Panel
41	1802620	1	DP Oval Logo Decal

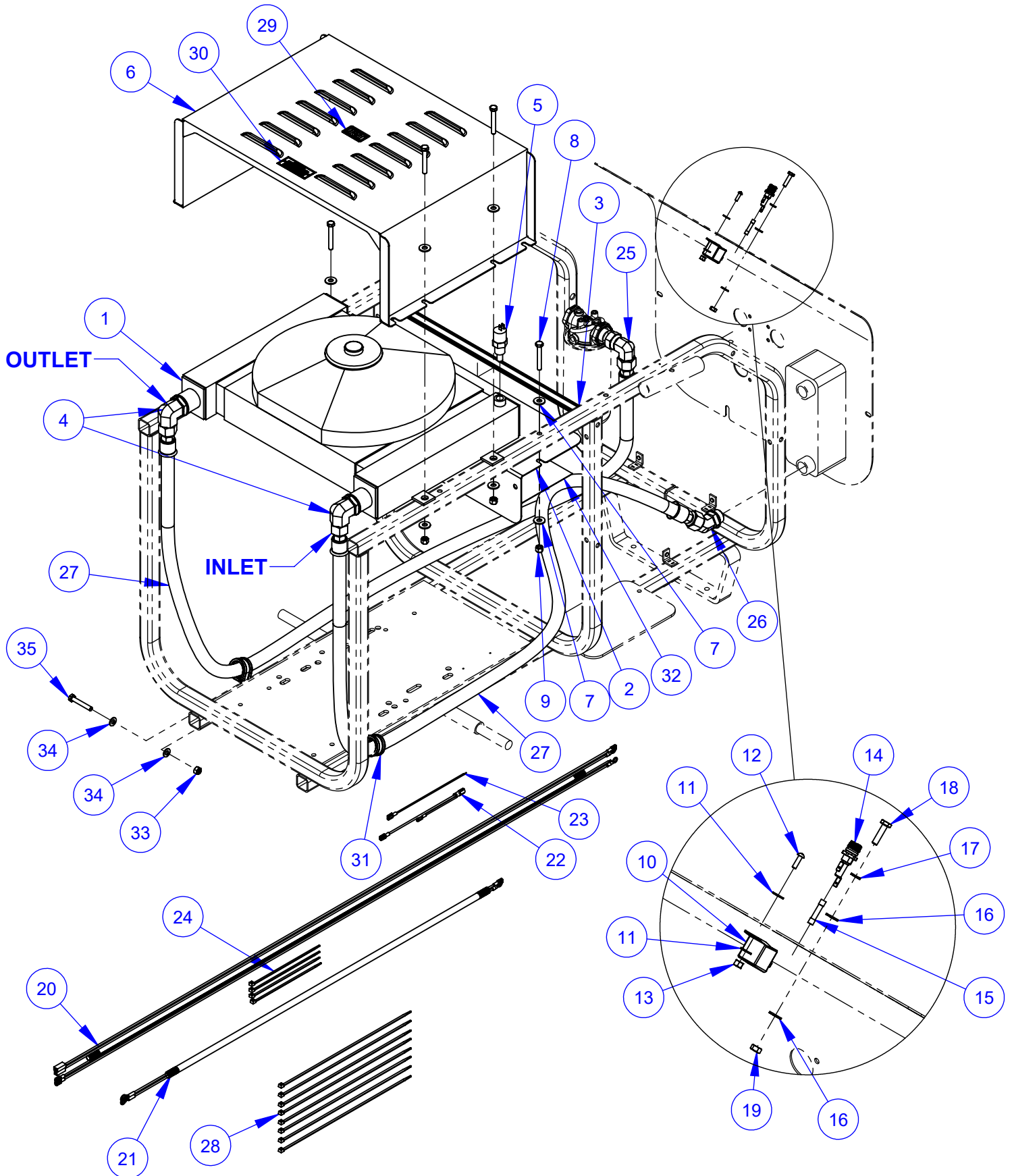
HOSE KIT, CB35, CB38, CB40 #4646209



ITEM	PART NO.	QTY.	DESCRIPTION
1	6040057	1	Hose Assy., 1 x 34"
	3202317	2	Fitting, 1" FJIC to 1" Hose Barb
	3205619	2	Crimp Shell, #16
2	4641067	3	Hose Assy., 5/8" x 31-1/4"
	3202075	2	5/8"FJICS x 5/8" Parkrimp Hose End Fitting
3	4646170	2	Hose Assy., 5/8" x 20"
	3201883	1	5/8" FJIC Parkrimp, 90 Deg.
	3202075	1	5/8"FJICS x 5/8" Parkrimp Hose End Fitting
4	4646086	2	Hose Assembly, 3/4" x 23.6"
	3201989	2	Fitting, 3/4" F.JIC to 3/4" Hose Barb
	3202708	2	Crimp Shell, #12
5	4646055	1	Hose Assembly, 1/4" x 16.6"
	3200128	1	Fitting, 1/4" F. JIC to 1/4" Hose Crimp
	3200145	1	1/4 MPT - 1/4 Hose Crimp
	3201110	1	Coupling, 1/4" NPT

Air to Oil Cooler, CB 38XL #4400307

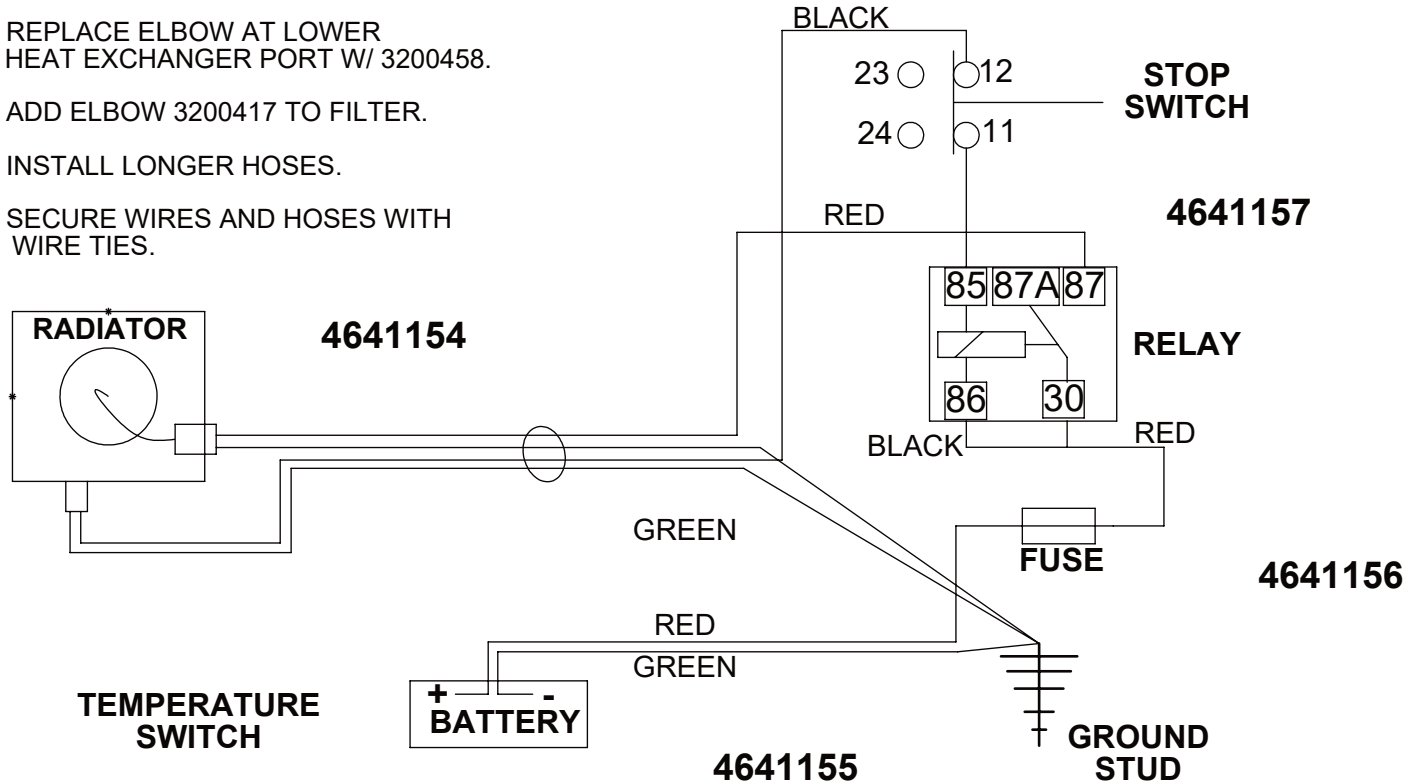
(CANNOT BE USED IN CONJUNCTION WITH OPTIONAL TOOL TRAY #4400261)



Air to Oil Cooler, CB 38XL #4400307

(CANNOT BE USED IN CONJUNCTION WITH OPTIONAL TOOL TRAY #4400261)

- 1) ATTACH WIRES TO RELAY BEFORE BOLTING TO PANEL.
- 2) REMOVE ORIGINAL HOSE FROM HEAT EXCHANGER TO FILTER.
- 3) REPLACE ELBOW AT LOWER HEAT EXCHANGER PORT W/ 3200458.
- 4) ADD ELBOW 3200417 TO FILTER.
- 5) INSTALL LONGER HOSES.
- 6) SECURE WIRES AND HOSES WITH WIRE TIES.

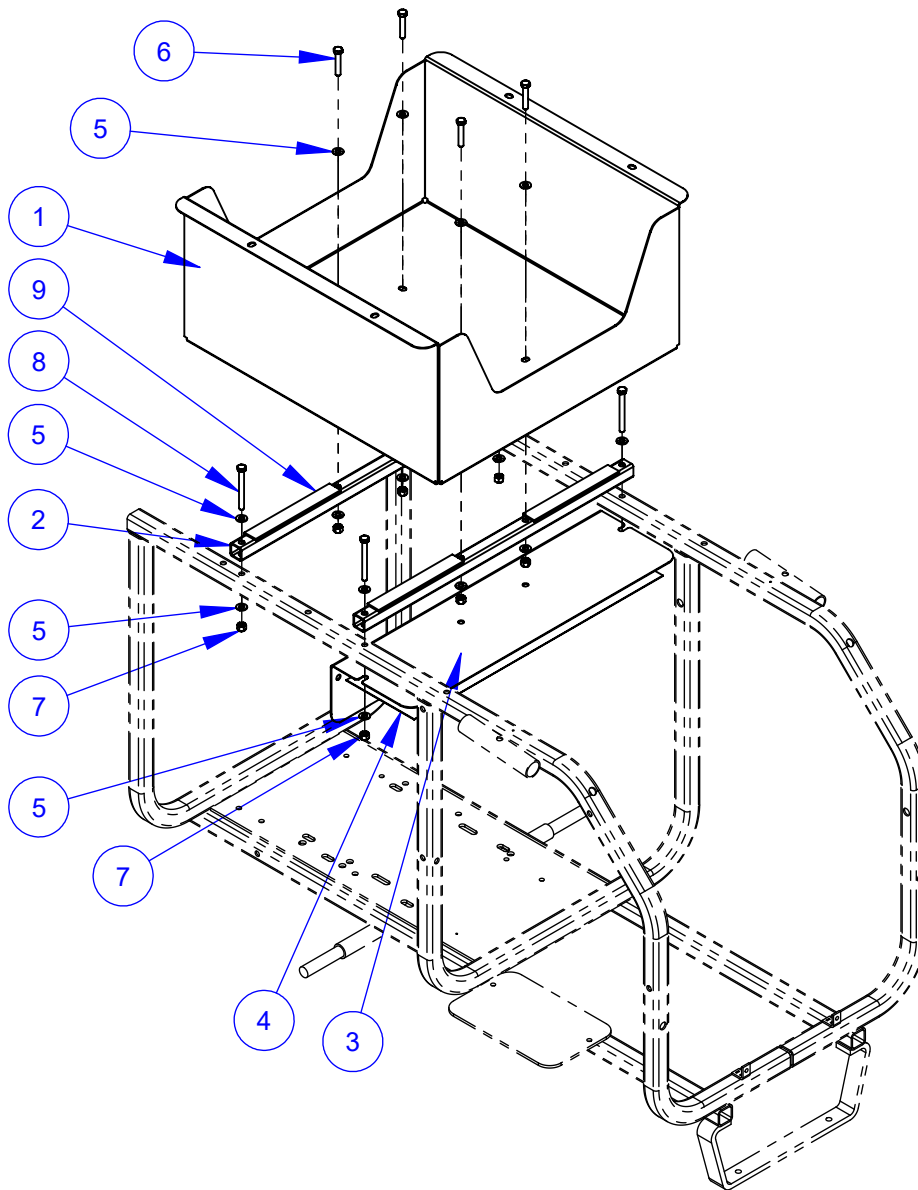


ITEM	PART NO.	QTY.	DESCRIPTION
1	2400308	1	Radiator, 12 Volt, 1" SAE Ports
2	4641097	1	Heat Shield
3	4645264	1	Gasket
4	3200112	2	Elbow, 1" O-Ring to 3/4" M. JIC
5	2800875	1	Temperature Switch, 3/8 NPT
6	4641159	1	Radiator Guard
7	2900567	12	Flat Washer, 5/16" USS
8	2900289	6	Cap Screw, Hex Hd., 5/16-18 x 2-1/4"
9	2900039	6	Lock Nut, 5/16-18 Nylon
10	2800144	1	Relay, 50 Amp Mini
11	2900016	2	Flat Washer, #10 USS
12	2900159	1	Machine Screw, Rd. Hd., #10-24 x 5/8"
13	2900017	1	Lock Nut, #10-24 Nylon
14	2800481	1	Fuse Holder
15	2803014	1	Fuse, 15 Amp, Slo Blow
16	2900009	2	Flat Washer, 1/4" SAE
17	2900024	1	Lock Washer, 1/4" Split
18	2900008	1	Cap Screw, Hex Hd., 1/4-20 x 1"

ITEM	PART NO.	QTY.	DESCRIPTION
19	2900125	1	Hex Nut, 1/4-20
20	4641154	1	Wire Assy., 4 Wire
21	4641155	1	Wire Assy., Red & Grn, 14 Ga.
22	4641156	1	Wire Assy, Black & Red
23	4641157	1	Wire Assy., 20 Ga., Brn, 8-1/2"
24	2800068	4	Zip Tie, 7-1/2"
25	3200417	1	Elbow, 3/4" F. JIC to 3/4" M. JIC
26	3200458	1	Elbow, 3/4" O-Ring to 3/4" M. JIC (45 deg)
27	4643016	2	Hose Assembly, 3/4" x 70"
28	2800278	8	Zip Tie, 14"
29	1800537	1	Label, HOT
30	1801707	1	Decal, Caution, Fan
31	2504465	2	Hose Clamp, 1-1/4" x 3/4" Wide
32	4600167	1	Heat Shield Mat, 6x22"
33	2900039	1	5/16"-18 Nylock Hex Nut
34	2900022	2	Flat Washer, 5/16" SAE
35	2900494	1	Cap Screw, Hex Hd., 5/16-18 x 2"

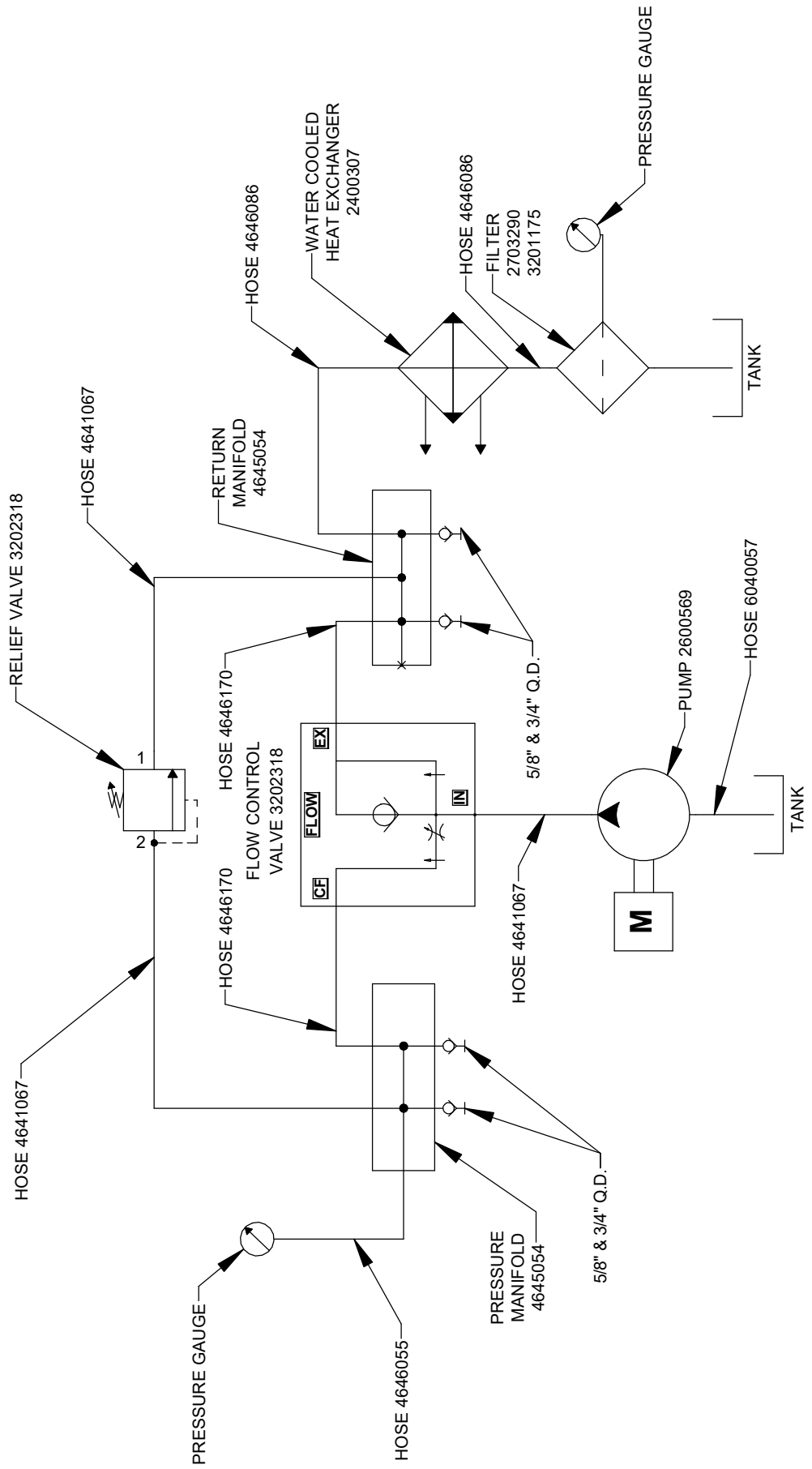
TOOL TRAY OPTION, GAS UNITS #4400261

(CANNOT BE USED IN CONJUNCTION WITH OPTIONAL AIR TO OIL COOLER)

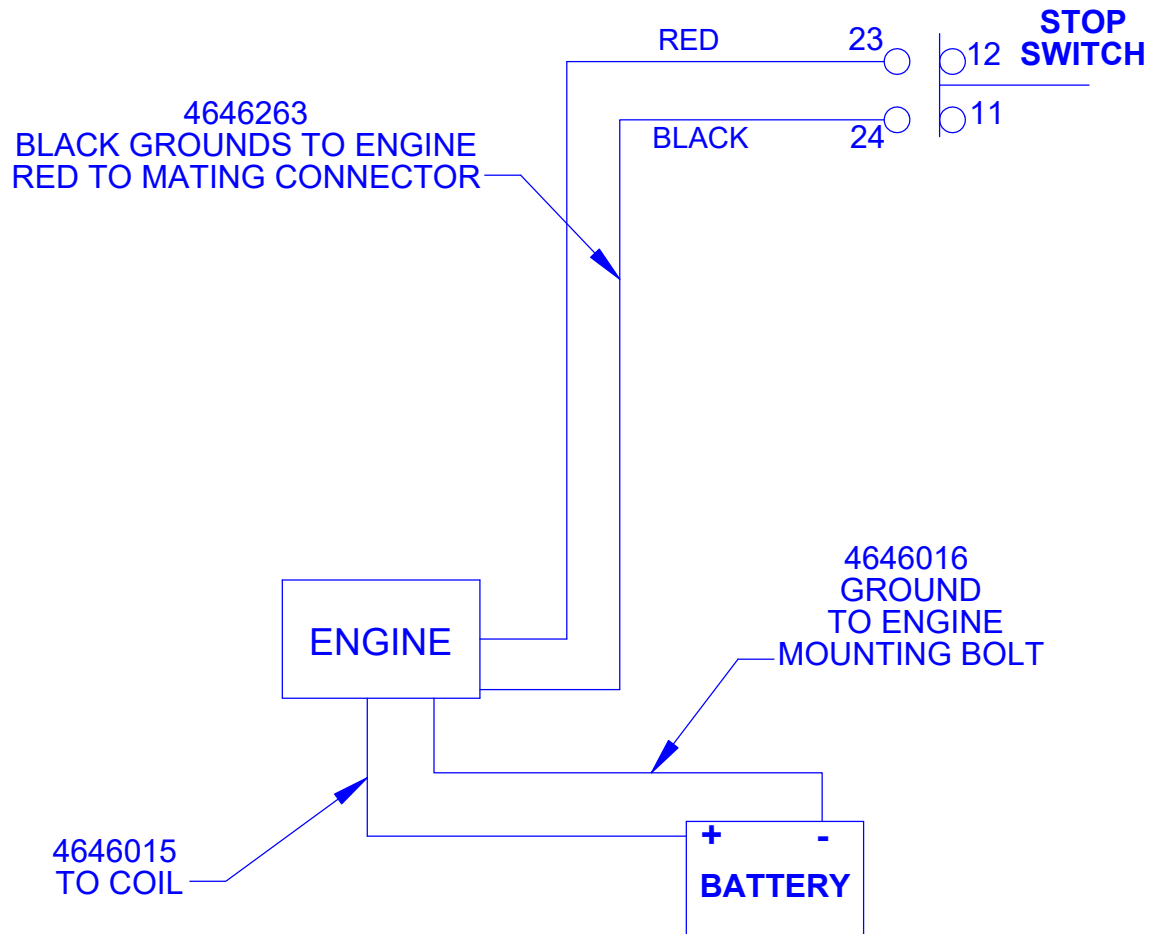


ITEM	PART NO.	QTY.	DESCRIPTION
1	4400207	1	Tool Tray
2	4600083	2	Tube, 1" Sq. x 23-3/4"
3	4641097	1	Heat Shield
4	4600167	1	Heat Shield Mat, 6x22"
5	2900022	16	Flat Washer, 5/16" SAE
6	2900538	4	Cap Screw, Hex Hd., 5/16-18 x 1-3/4"
7	2900039	8	Lock Nut, 5/16-18 Nylon
8	2900248	4	Cap Screw, Hex Hd., 5/16-18 x 3"
9	6048077	4	Rubber Strip

CB38XL HYDRAULIC SCHEMATIC #4646237



CB38KXL Electric Schematic #4646237



FOR EASE OF ASSEMBLY, ATTACH WIRES TO STOP SWITCH
BEFORE INSTALLING IN PANEL.

EQUIPMENT AND PARTS WARRANTY

Diamond Products warrants all equipment manufactured by it against defects in workmanship or materials for a period of one (1) year from the date of shipment to Customer.

The responsibility of Diamond Products under this Warranty is limited to replacement or repair of defective parts at Diamond Products' Elyria, Ohio factory, or at a point designated by it, of such parts as shall appear to us upon inspection at such parts, to have been defective in material or workmanship, with expense for transportation and labor borne by Customer.

In no event shall Diamond Products be liable for consequential or incidental damages arising out of the failure of any Product to operate properly.

Integral units such as engines, electric motors, batteries, transmissions, etc., are excluded from this Warranty and are subject to the prime manufacturer's warranty.

THIS WARRANTY IS IN LIEU OF ALL OTHER WARRANTIES, EXPRESSED OR IMPLIED, AND ALL SUCH OTHER WARRANTIES ARE HEREBY DISCLAIMED.



333 Prospect Street, Elyria, Ohio 44035
(440) 323-4616 • (800) 321-5336 • Fax (800) 634-4035
www.diamondproducts.com