



**CORE VAC
PARTS LIST**

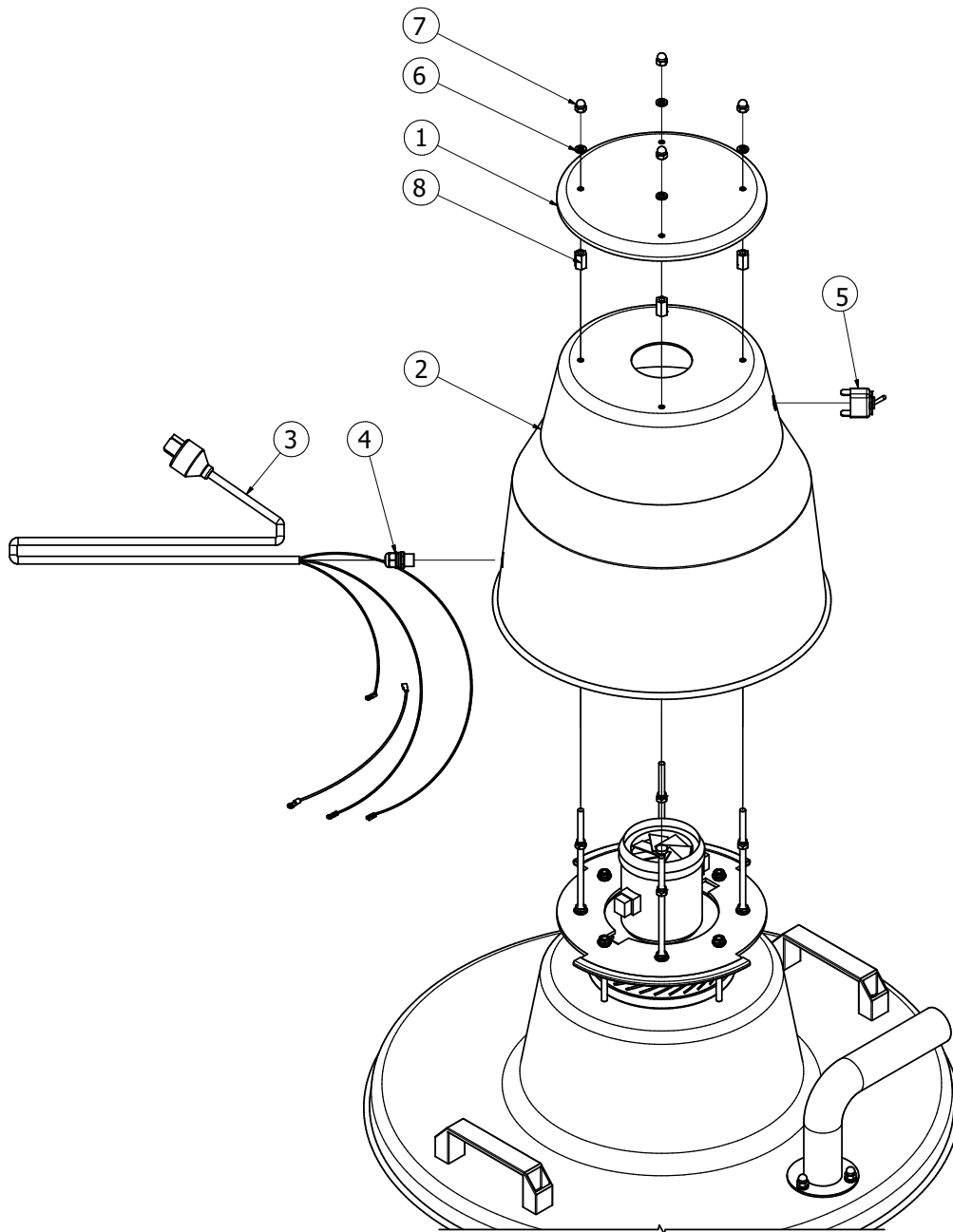
**CV300S
SLURRY VAC**

DECEMBER, 2023

Table of Contents

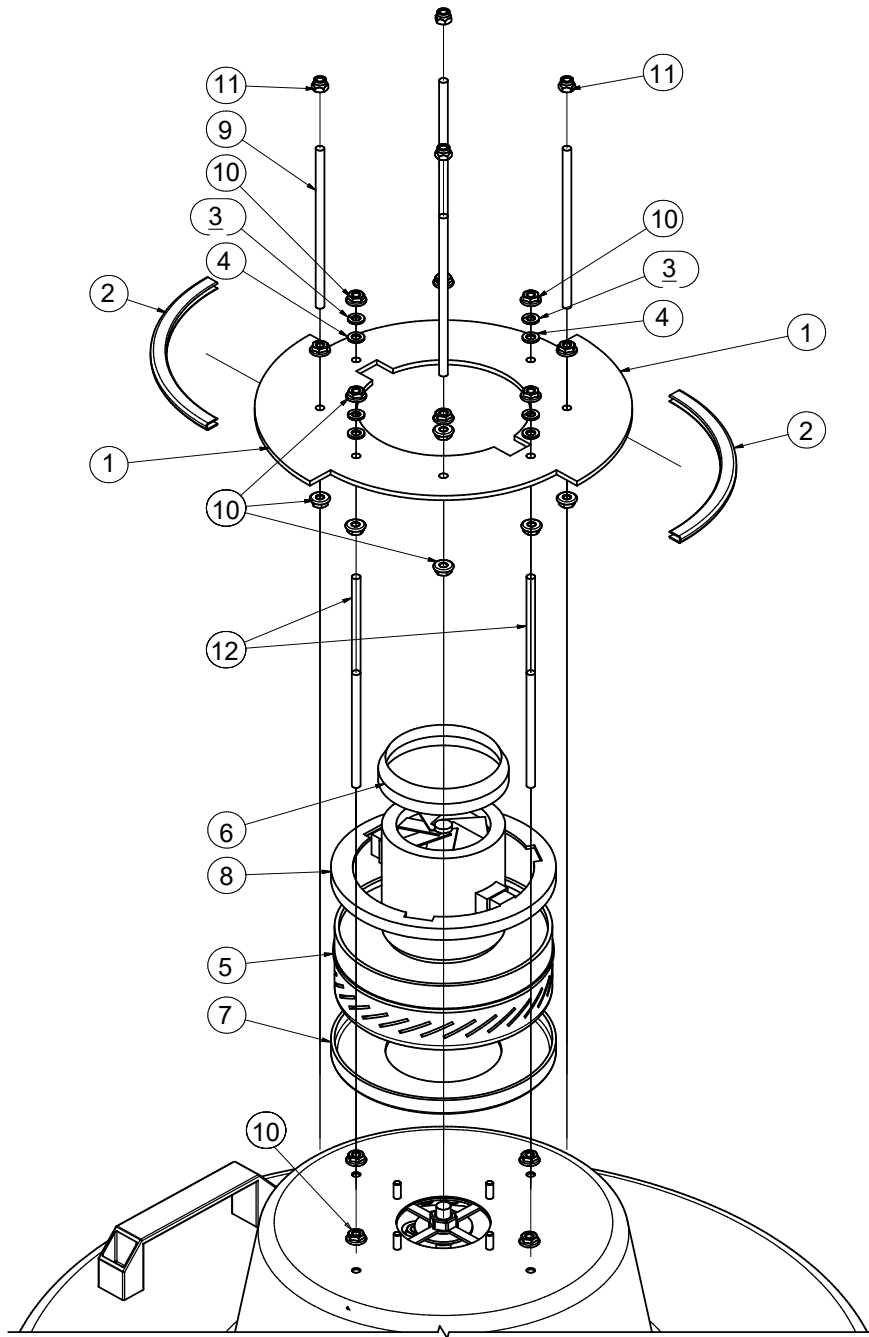
<u>Description</u>	<u>Page No.</u>
1. HeadFrame	4
2. Motor	5
3. MainFrame	6-7
4. CV300SDrum	8
5. CV300SCart	9
6. Additional Accessories	10

Head Frame



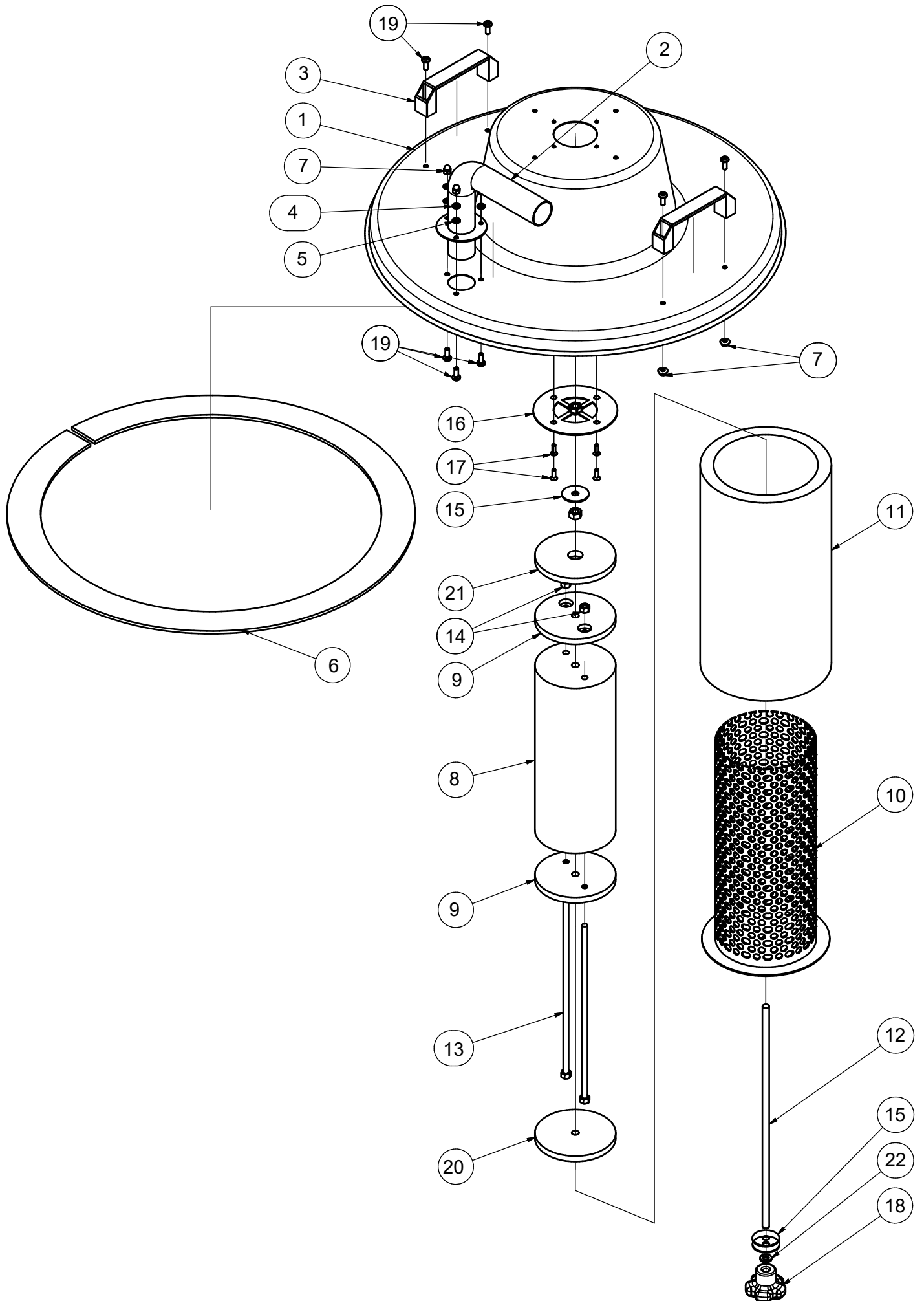
ITEM	QTY	DP #	DESCRIPTION
1	1	2508959	WIND COVER
2	1	2508958	MOTOR COVER
3	1	2508962	POWER CABLE
4	1	2508960	SOCKET
5	1	2508585	ON/OFF SWITCH (Y-002)
6	4	2508889	M6 WASHER
7	4	2508941	M6 CAP NUT
8	4	2508961	M6 X 15 - 11MM LONG NUT

Motor



ITEM	QTY	DP #	DESCRIPTION
1	1	2508981	MOTOR FRAME GUARD
2	2	2508662	RUBBER PACKING
3	4	2509147	M6 SPRING WASHER
4	4	2508889	M6 WASHER
5	1	2508581	MAIN MOTOR (Y-008)
6	1	2508595	TOP OF MOTOR COVER (Y-006)
7	1	2508598	LOW OF MOTOR COVER (2700-025)
8	1	2508597	MID MOTOR COVER (Y007)
9	4	2508982	M6*140 FULL THREADED BOLT
10	20	2509146	M6 FLANGE NUT
11	4	2508983	M6 NYLON NUT
12	4	2508984	M6x100 FULL THREADED BOLT

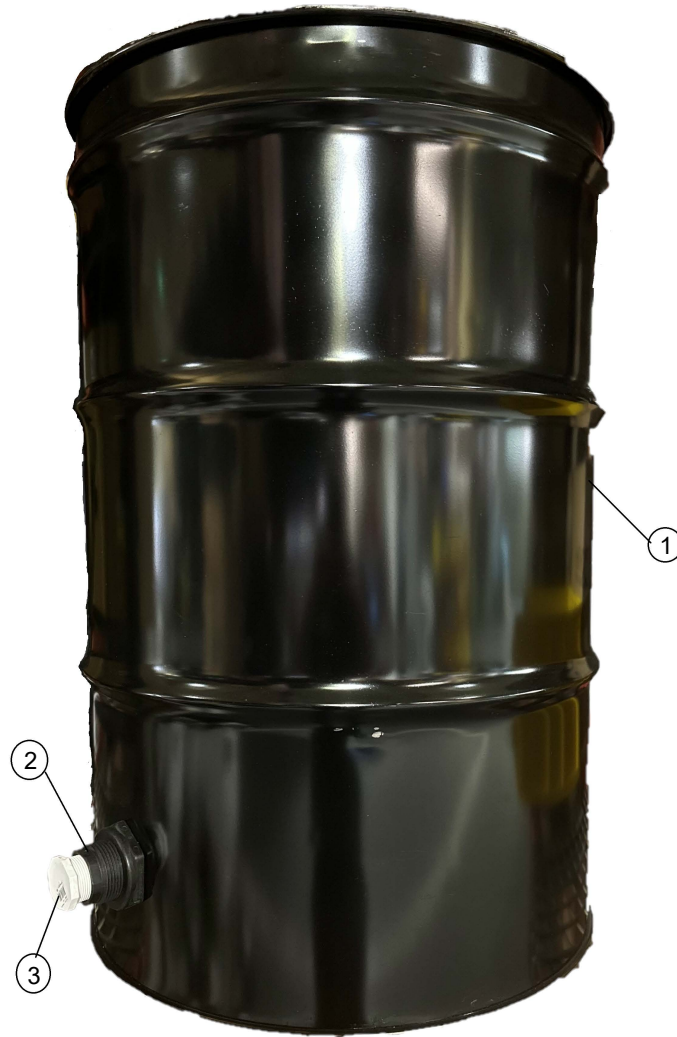
Main Frame



Main Frame

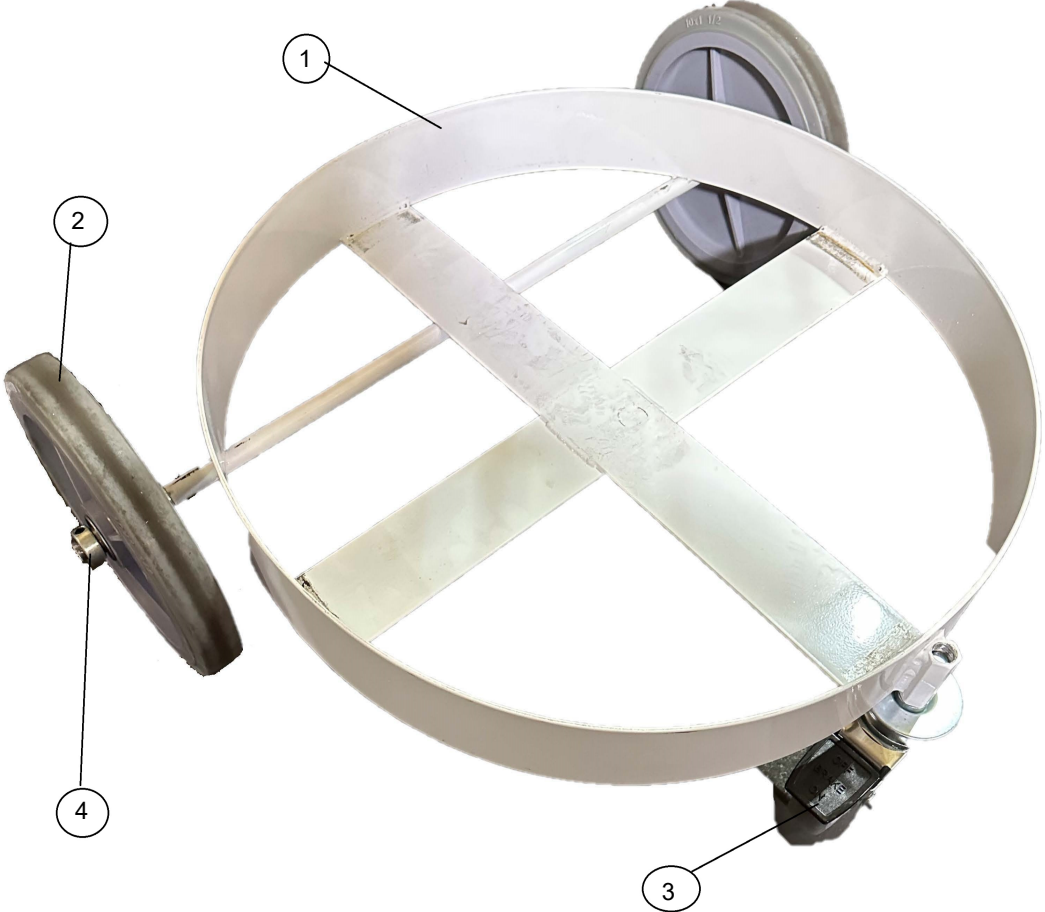
ITEM	QTY	DP #	DESCRIPTION
1	1	2508963	MOTOR FRAME
2	1	2508964	SUCTION GATE
3	2	2508965	HANDLE
4	3	2509147	M6 SPRING WASHER
5	3	2508889	M6 WASHER
6	1	2508966	5Tx50mm RUBBER SPONGE
7	7	2508941	M6 CAP NUT
8	1	2508967	FLOATING STYROFOAM
9	2	2508968	FLOATING STYROFOAM FIXING FRAME
10	1	2508969	ROUND HOLE MESH
11	1	2508970	35PPI FILTER
12	1	2508971	M10x 415 STAINLESS FULL THREADED BOLT
13	2	2508972	M8x318 STAINLESS FULL THREADED BOLT
14	2	2508973	M8 STAINLESS NUT
15	2	2508974	M10x40 WASHER
16	1	2508975	FILTER FIXING PARTS
17	4	2508976	M5x16 STAINLESS HEX SOCKETFLAT HEAD CAP SCREW
18	1	2508977	M10 MULTI HANDLE
19	7	2508978	M6x16 ROUND HEAD BOLT
20	1	2508979	RUBBER SPONGE (UNDER)
21	1	2508980	RUBBER SPONGE (UPPER)
22	1	2508884	M10 SPRING WASHER

6049207 CV300S Drum



ITEM	QTY	DP #	DESCRIPTION
1	1	2509022	55 GAL DRUM WITH DRAIN
2	1	3206441	BULK HEAD 1-1/4"
3	1	3203627	PLUG 1-1/4"

6049206 CV300S Cart



ITEM	QTY	DP #	DESCRIPTION
1	1	2509020	CV300S Cart Chassis
2	2	2505682	10" x 1.5" Wheel
3	1	2505683	4" x 1.25" Caster Wheel
4	4	2500008	Set Collar 5/8"

Additional Accessories
Not Shown

QTY	DP #	DESCRIPTION
1	2505970	Hand Tube (Wand)
1	2505971	Head, Floor Squeegee
1	2505972	Head, Floor Brush
1	2506969	CV300S Slurry Vac Motor Head Only
1	2505973	15ft Hose, Includes 2x Couplers (2508985)
1	2505974	30ft Hose, Includes 2x Couplers (2508985)
	2508985	Hose Coupler 1 1/2" ID / 1 3/4" OD
	1809030	Core Vac Decal, CV300S

Intentionally Blank

EQUIPMENT AND PARTS WARRANTY

Diamond Products warrants all equipment manufactured by it against defects in workmanship or materials for a period of 90 Days from the date of shipment to Customer. The responsibility of Diamond Products under this Warranty is limited to replacement or repair of defective parts at Diamond Products' Elyria, Ohio factory, or at a point designated by it, of such parts as shall appear to us upon inspection at such parts, to have been defective in material or workmanship, with expense for transportation and labor borne by Customer. In no event shall Diamond Products be liable for consequential or incidental damages arising out of the failure of any Product to operate properly.

THIS WARRANTY IS IN LIEU OF ALL OTHER WARRANTIES, EXPRESSED OR IMPLIED, AND ALL SUCH OTHER WARRANTIES ARE HEREBY DISCLAIMED.



333 Prospect Street, Elyria, Ohio 44035
(440) 323-4616 • (800) 321-5336 • Fax (800) 634-4035
www.diamondproducts.com