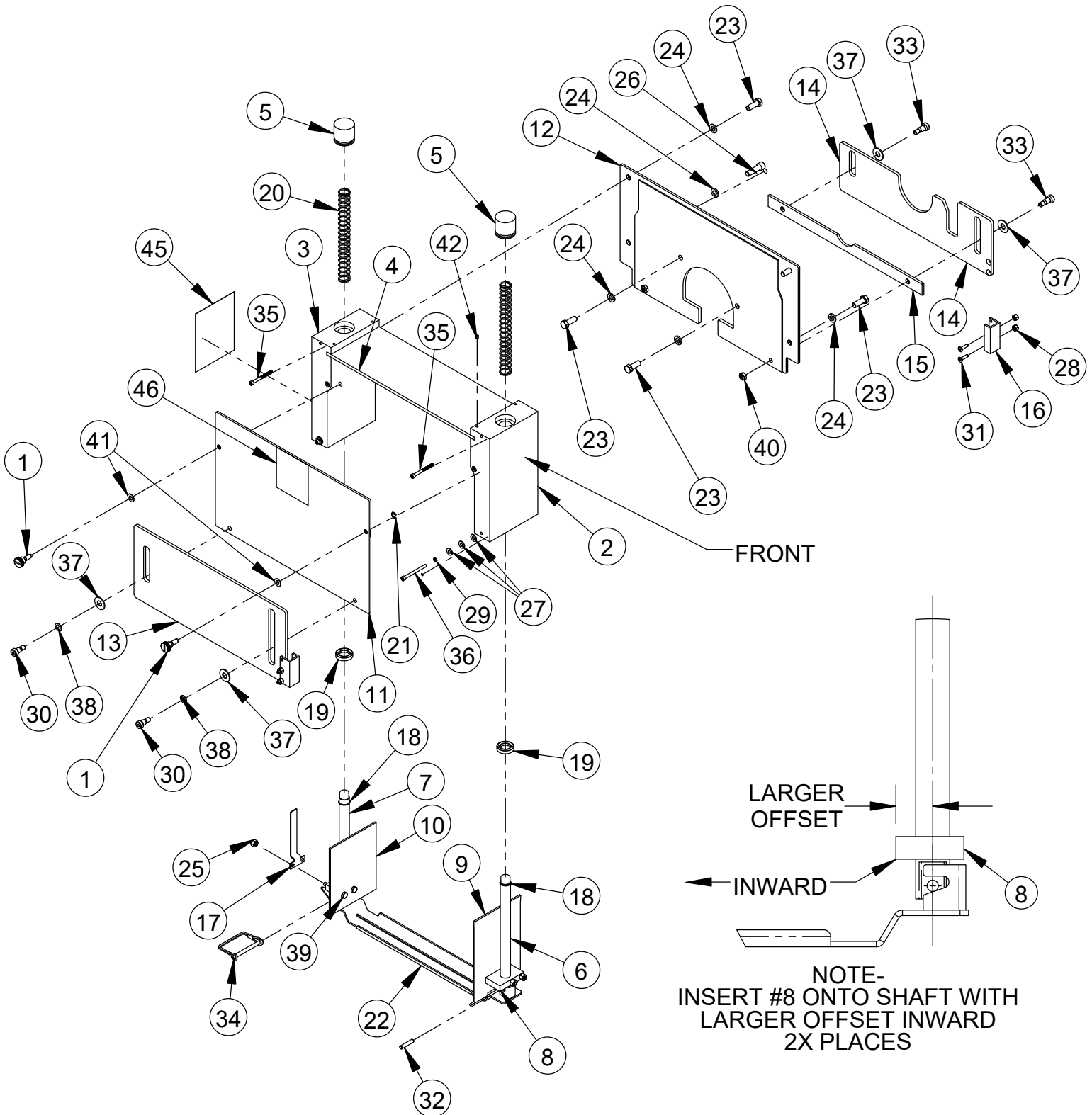


SPRING BOX ASSEMBLY 14" #6040395



LARGER OFFSET

INWARD

NOTE-
 INSERT #8 ONTO SHAFT WITH
 LARGER OFFSET INWARD
 2X PLACES

ASSEMBLY NOTE:
 1. APPLY 2502046 SYNTHETIC GREASE TO OD OF COMPRESSION SPRINGS.

SPRING BOX ASSEMBLY 14" #6040395

ITEM	PART NO.	QTY.	DESCRIPTION
1	6040385	2	Captive Thumb Screw, 5/16-18
2	6040677	1	Spring Block. Front 14"
3	6040678	1	Spring Block, Rear 14"
4	6040679	1	Cover, Top
5	6040680	2	Cap, Spring Block
6	6040770	1	Shaft, Spring Block Front
7	6040771	1	Shaft, Spring Block Rear
8	6040683	2	Collar, Dust Diverter
9	6040769	1	Diverter, Front Dust
10	6040685	1	Diverter, Rear Dust
11	6040686	1	Cover, Front Spring Box
12	6040687	1	Cover, Rear Spring Box
13	6040688	1	Shield, Front Spring Box
14	6040689	1	Shield, Rear Spring Box
15	6040690	1	Spacer, Rear Shield
16	6040691	2	Channel, Rear Shield
17	6040693	1	Depth Guide
18	2504630	2	Retaining Ring, 3/4 Ext. Spiral
19	2504631	2	Shaft Seal, 3/4" Shaft
20	2504871	2	Comp. Spring, .866 X .079 X 7.874L
21	2504645	2	Retaining Ring, 5/16 Ext.
22	2505485	1	Skid Plate Weldment - 14" - .200 Slot
23	2900005	5	Cap Screw, Hex Hd., 3/8-16 x 1"
24	2900006	6	Lock Washer, 3/8" Split
25	2900010	4	Lock Nut, 1/4-20 Nylon
26	2900724	1	Cap Screw, Soc. Hd., 3/8-16 x 1-1/4"
27	2900016	6	Flat Washer, #10 USS
28	2900017	4	Lock Nut, #10-24 Nylon
29	2900038	2	Lock Washer, #10 Split
30	2900253	2	Shoulder Screw, 3/8 x 3/8" (5/16-18)
31	2900469	4	Cap Screw, Flat Hd., #10-24 X 3/4"
32	2900577	1	Pin, Dowel 1/4 x 1-1/4"
33	2900672	2	Shoulder Screw, 3/8" x 1/2" (5/16-18)
34	2901589	1	Pin, Safety 1/4"
35	2901596	2	Cap Screw, Soc. Hd., #10-32 x 2"
36	2901877	2	Cap Screw, Soc. Hd., #10-32 x 2-1/4"
37	2902001	4	Flat Washer, 3/8" PVC
38	2901881	2	Flat Washer, 3/8" Shim
39	2901882	4	Tap Bolt, Hex Hd., 1/4-20 x 2"
40	2901884	4	Jam Locknut, 5/16-18" Nylon
41	2901963	2	Washer, Belleville 5/16"
42	2900059	4	Set Screw, Soc. Hd., #10-32 x 1/4"
43	2502046	AR	Grease, Fuchs Synthetic
44	2504745	1	Cable Tie, Nylon 48" Long
45	1802578	1	Decal, Blade Depth CC190PRO
46	1805555	1	First Cut Decal