



FIRST-CUT™
EARLY ENTRY PRODUCTS

EARLY ENTRY PRODUCTS



DIAMOND PRODUCTS LIMITED
333 Prospect St., Elyria, OH 44035 U.S.A.

800-321-5336
diamondproducts.com



CC150XL-EE FIRST-CUT™ SAW

LIGHT WEIGHT & PORTABLE



Powered By:



CC150XL-EE Includes vacuum attachment guard plate that can connect to the CORE VAC™ line of vacuums.

Telescoping handle adjusts to operator's height

4.8HP
Honda Gasoline

Improved pointer kit

6.5" Blade Capacity
Electric
Gasoline

Up-cut Design

Spring loaded skid plate blade guard keeps the skid plate down on the surface to help prevent spalling

FEATURES

- Reliable skid plate system for green concrete
- Spring-loaded skid plate that stays down on the surface to help prevent spalling
- Increased raise height
- Heavy duty design but light weight enough for two people to lift
- Fully adjustable handle bars for operator comfort
- Five wheels under the frame for increased stability
- Cyclone air filter for increased air flow
- Up-cut design to keep debris from going back in the cut
- Blade raise/lower mechanical mechanism with spring loaded release
- Single ribbed drive belt
- Includes vacuum attachment guard plate

TECHNICAL DATA

Max. Depth of Cut	1.5" with 6.5" diameter blade
Blade Shaft RPM	4020
Blade Shaft Diameter	1-1/4"
Arbor Size	1"
Depth Indicator	Standard
Dimensions	16.94" wide, 21.80" tall, 32.92" long

CC150XL-EE EARLY ENTRY SAW

Model #	Engine Make/Model	Engine Power	Part #	Cat #	Product Weight (lbs)
CC125BXL-EE6	Baldor Electric	2.5 HP	5801357	07789	120
CC148HXL-EE6	Honda® GX160	4.8 HP, 7.6 Torque (lbs.-ft.)	5801345	32739	100
CC165BVXL-EE6	Briggs® Vanguard	6.5 HP	5801346	32747	105

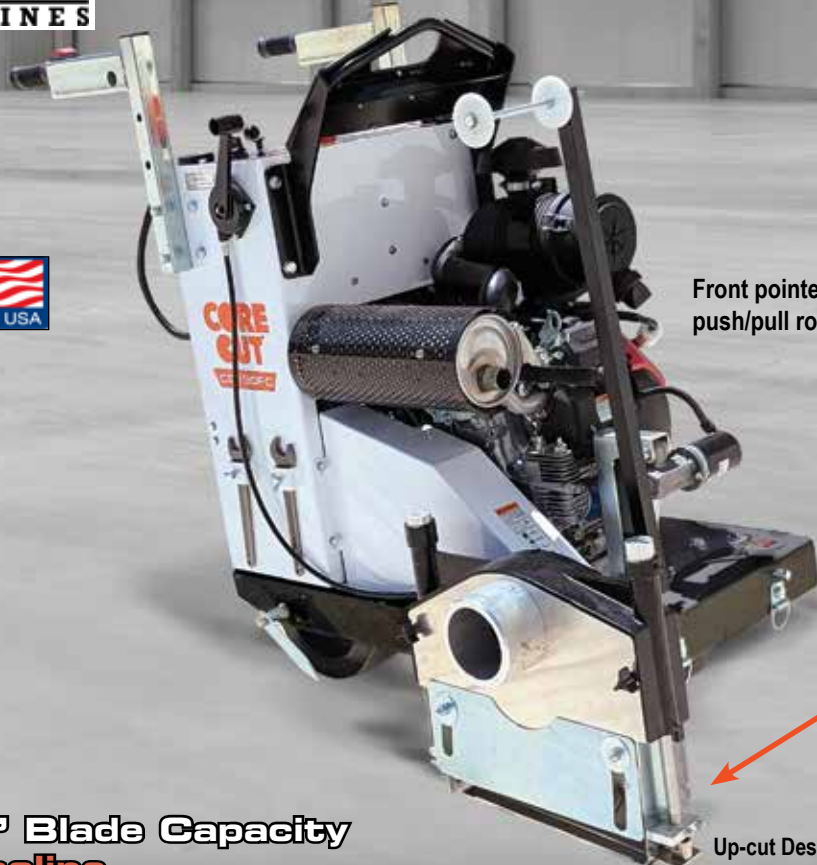
Horsepower as rated by the engine manufacturer.



Powered By:



PROFESSIONAL GRADE PERFORMANCE



Front pointer, now comes with a push/pull rod for ease of use

Spring loaded skid plate blade guard keeps the skid plate down on the surface to help prevent spalling

14" Blade Capacity
Gasoline

Up-cut Design

FEATURES

- Capable of .110" to .250" thick blades
- Self propelled drive
- Raise and lower adjustable handle bars
- Heavy duty handle design
- Vacuum port plate for easy dust control
- Vibration dampeners that prevent rattling that disrupts the skid plate function
- Self aligning blade shaft bearings
- Easy access to battery with heavy duty isolator switch to prevent power drain
- Up-cut design to keep debris from going back in the cut
- Lifting hook for easy transport

Includes: Electric start, low oil alert and tach/hour meter, pointer arm cable kit

TECHNICAL DATA

Max. Depth of Cut	1-5/8" with 10" blade 2-5/8" with 12" blade 3-5/8" with 14" blade
Blade Shaft RPM	3500
Blade Shaft Diameter	1-1/4"
Arbor Size	1" with single drive pin
Blade Raise/Lower	Electric actuation
Transmission	Eaton Model 6
Drive Speed	0-80 feet per minute



Use the Core Vac CVG1PRO Vacuum for the CC190FC saw. Includes Hoses.

CC190FC EARLY ENTRY SAW

Model #	Engine Make/Model	Engine Power	Part #	Cat #	Product Weight (lbs)
CC190FC	Honda® GX630	20.8 HP, 35.6 Torque (lbs.-ft)	5801129	111715	420

CC190FC OPTIONS

Description	Part #	Cat #
CVG1-PRO containment vacuum for CC190FC with hoses - dry only	5801910	111653
Pointer Arm Cable Upgrade Kit (Pre-2025 Units)	6041964	111785
Vacuum adapter 3" to 5" (manifold assembly 1" - 3" port)	2504846	82102
Spot Light Kit	6047720	78751

Horsepower as rated by the engine manufacturer.



EXPERT FIRST-CUT™ DIAMOND BLADES



SPECIFICATIONS

Specifications & Specification Color Code	Aggregate Hardness & Map Color Code
EXPERT 1000-Purple	Very Hard
EXPERT 2000-Green	Hard
EXPERT 3000-Red	Medium Hard
EXPERT 4000-Orange	Medium
EXPERT 5000-Yellow	Medium Soft
EXPERT 6000-Black	Soft
EXPERT 7000 Blue	Very Soft

EXPERT

Very long cutting life expectation in green concrete with professional performance.

Consider the **Aggregate Hardness** based on aggregate found in your area and cure time before determining the bond specification. Aggregate hardness can be determined by the aggregate map found at the back of this booklet.

Specification Color Codes follow common industry codes for bond specifications.

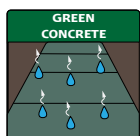


First-Cut blades Include a 1" arbor with drive-pin hole and triangle knock-out. Diamond Products' saws have 1" arbors where some competitor saws have an arbor that accepts the triangle knockout.



Joint Protectors

- 2" long x 1/2" wide x 1/8" thick
- Used when making cross-cuts in green concrete
- Prevents joint collapse when cutting across another cut



FOR USE ON FIRST-CUT™ OR COMPETITOR SAWS ON GREEN CONCRETE

Bag Quantity	Part #	Cat #
50	JOINTPRO-50	17145
150	JOINTPRO-150	107856

V-BEVEL

- Cleans spalled joints
- Makes decorative finish joints
- Creates a better reservoir for applying joint fillers
- Beveled edges for protecting joints



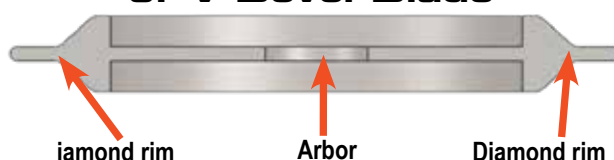
Special Skid Plate for V-Bevel Blades

Universal skid plate that fits Diamond Products and competitor saws

First-Cut Bevel V-Blades		
Size/Description	Part #	Cat #
6" x .375" (3/8") x 1"	CVBFC06375	106720
6" x .625" (5/8") x 1"	CVBFC06625	106721
Skid Plate Kit*	6052020	106928
Universal Snap-On Skid Plate Only for V-Bevel Blade	2505482	106638

*Includes UNV V-Bevel skid plate, spring block cap, screws and nuts for use on CC150XL to keep the saw at a constant depth for V-Bevel cutting.

Profile View of V-Bevel Blade



EXPERT FIRST-CUT™ BLADE PACKAGES



EXPERT - VERY HIGH QUALITY, LONGER LIFE Individual Blade Only - No Skid Plate							
SIZE	EXPERT1000 Purple Cat #	EXPERT2000 Green Cat #	EXPERT3000 Red Cat #	EXPERT4000 Orange Cat #	EXPERT5000 Yellow Cat #	EXPERT6000 Black Cat #	EXPERT7000 Blue Cat #
AGGREGATE	VERY HARD	HARD	MED HARD	MEDIUM	MED SOFT	SOFT	VERY SOFT
6" x .095	66117	67330	57526	68407	69019	56798	---
6.5" x .100	90411	---	103521	---	---	---	---
8" x .100	67332	67331	68352	68328	68380	68331	---
10" x .110	68782	67318	55816	68498	51150	56801	---
10" x .250	108943	108944	68335	68417	108945	108946	---
12" x .080	101118	---	106824	106814	---	---	111315
12" x .125	67326	67325	57524	68512	90673	52597	---
12" x .250	70590	68507	68590	68515	68475	70118	---
13.5" x .125	68438	67329	67898	69554	68378	69690	---
13.5" x .250	69159	70166	69328	69853	68434	68384	---
14" x .125	68394	68392	57525	68518	51156	51177	---
14" x .250	68521	70559	68526	68469	68351	69770	---

EXPERT BLADE PACKAGES Blades With Universal Snap-On Skid Plate for DIAMOND PRODUCTS SAWS								
SIZE	Includes Skid Plate #	EXPERT1000 Cat #	EXPERT2000 Cat #	EXPERT3000 Cat #	EXPERT4000 Cat #	EXPERT5000 Cat #	EXPERT6000 Cat #	EXPERT7000 Blue Cat #
AGGREGATE		VERY HARD	HARD	MED HARD	MEDIUM	MED SOFT	SOFT	VERY SOFT
6" x .095	2505481	64145	64147	64149	64150	64155	64156	---
6.5" x .100	2505481	106266	---	107670	---	---	---	---
10" x .110	2505485	106298	106299	106300	106301	106302	106303	---
10" x .250	2505489	106304	106308	106309	106310	106311	106312	---
12" x .080	2505485	106313	---	107224	107669	---	---	108302
12" x .125	2505485	106154	106156	106162	106164	106166	106168	---
12" x .250	2505489	106155	106157	106163	106165	106167	106169	---
13.5" x .125	2505485	106314	106315	106316	106317	106318	106323	---
13.5" x .250	2505489	106324	106326	106327	106328	106329	106330	---
14" x .125	2505485	64557	64558	64559	64561	64562	64566	---
14" x .250	2505489	64584	64585	64590	64597	64598	64599	---

EXPERT BLADE PACKAGES Blades With Universal Snap-On Skid Plate for COMPETITOR SAWS								
SIZE	Includes Skid Plate #	EXPERT1000 Cat #	EXPERT2000 Cat #	EXPERT3000 Cat #	EXPERT4000 Cat #	EXPERT5000 Cat #	EXPERT6000 Cat #	EXPERT7000 Blue Cat #
AGGREGATE		VERY HARD	HARD	MED HARD	MEDIUM	MED SOFT	SOFT	VERY SOFT
6" x .095	2505481	64145	64147	64149	64150	64155	64156	---
6.5" x .100	2505481	106266	---	107670	---	---	---	---
8" x .100	2505481	64208	64210	64212	64216	64217	64218	---
10" x .110	2505483	64288	64289	64290	64293	64296	64298	---
10" x .250	2505487	64349	64351	64353	107671	107672	107673	---
12" x .080	2505484	104049	---	106805	112685	---	---	107589
12" x .125	2505484	64389	64390	64402	64417	64418	64419	---
12" x .250	2505488	64449	64451	64452	64453	64458	64460	---
13.5" x .125	2505484	64488	64489	64493	64494	64495	64498	---
13.5" x .250	2505488	64532	64533	64535	64541	64543	64544	---
14" x .125	2505485	64557	64558	64559	64561	64562	64566	---
14" x .250	2505489	64584	64585	64590	64597	64598	64599	---



L8TR BLADES & SKID PLATES



9mm segment design for fast cutting and 14" includes radius drop segment wear protection

Designed for use on our First-Cut™ early-entry saw line or competition saws.

First-Cut L8TR Blades

Size	Cat #
6" x .095 x 1"	104440
12" x .125 x 1"	104441
13.5" x .125 x 1"	111050
14" x .125 x 1"	104442

SPECIFICATION

L8TR - Fast cutting in green concrete after the Control Zone

L8TR Blade

We know your jobs are unpredictable and things happen. If you missed cutting green concrete within the two hour Control Zone, don't worry, we've got you covered - even the next day.

UNIVERSAL Snap-On Skid Plates Fit Diamond Products Saws and Competitor Saws.

Universal Skid Plate Features

- Stainless steel construction
- Snap-on, clip style that fits on Diamond Products First-Cut saws and competition saws
- 1/8" thick bottom plate allows skid to be used for 2-3 blades before requiring replacement depending on the abrasive properties of the aggregate and the diameter of the blade
- Steel mounting pins that won't break or fail like some cast aluminum competitor mounts
- Mounted with a locking pin to keep the plate in place
- Fits both steel and cast skid plate saws



ALWAYS CHECK SKID PLATE BEFORE SAWING!

Look for wear at these highlighted areas on the bottom side of the skid plate. If the slot is no longer a straight line, you must replace the skid plate.

This wear is typically seen every 2 to 3 blade lives depending on the aggregate type.

When Used with Hard Aggregate:

Blades in hard aggregate have shorter life so the skid plate will last longer. This holds true for diamond blades. They wear out faster, which leads to less skid plates being needed due to less abrasion wearing on the steel skid plate.

When Used with Soft Aggregate:

Blades in soft aggregate last longer so the skid plates wear out with fewer blades. Blades specifications for soft aggregate are typically hard, which results in more skids plates being needed due to more abrasion on the steel skid plate.

Skid plates for .375" and .500" thick blades available upon request.

UNIVERSAL SNAP-ON SKID PLATES - FOR .125 & .250 THICK BLADES

Description	.125 Part #	.125 Cat #	.250" Part #	.250" Cat #
Skid Plate for 6" and 8" Blades	2505481	105295	2505486	107475
Skid Plate for 10" Blades	2505483	107039	2505487	107476
Skid Plate for 12" and 13.5" Blades	2505484	107040	2505488	107477
Skid Plate for 14" Blades	2505485	107041	2505489	107478

Soft-Cut® is a registered trademark of Husqvarna AB (publ) and is in no way affiliated with Diamond Products Limited.



TRUE EARLY ENTRY™

System Components:

- First-Cut™ EXPERT blade
- First-Cut™ saw with skid plate guard system
- Optimal Time of Cutting-Known as the Control Zone™ (2 hours after finishing and before final set)

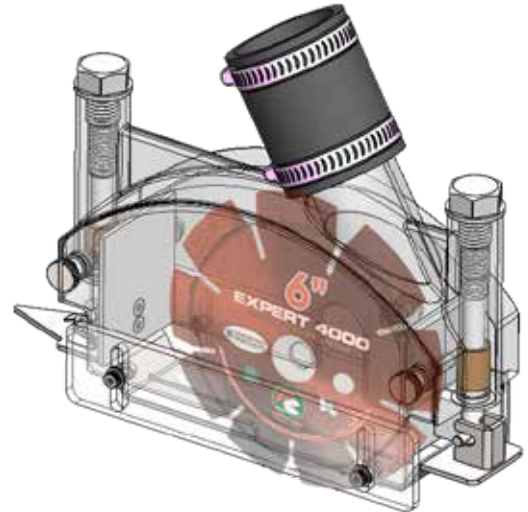


WHAT ARE TRUE EARLY ENTRY™ CONTROL / RELIEF JOINTS?

As concrete is placed and being finished, chemical reactions begin to take place causing the slab to increase in temperature. Stress, caused by shrinkage, begins to accumulate rapidly. At this time the concrete is looking for relief. If not relieved in a timely manner the concrete will relieve itself, resulting in random cracks appearing across the surface of the slab.

By placing **True Early Entry™** joints at the appropriate spacing (normally 10' to 12' apart) the concrete finds the relief its looking for and cracks directly beneath the cut.

The timing of **True Early Entry™** joints are critical! Controlling random cracking is all about the timing of the cut, not the depth of the cut. Cuts must be placed between the initial set and the final set of the concrete. This **CONTROL ZONE™** is the optimal cutting time to give concrete relief when it is looking for it the most.



First-Cut™ Skid Plate Blade Guard System

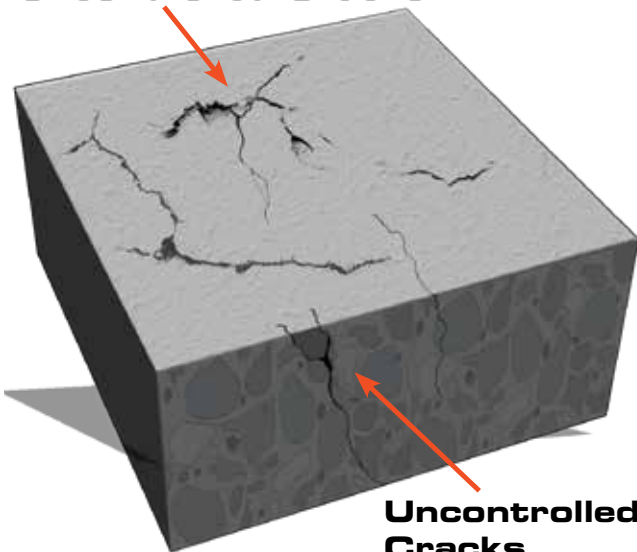
Our First-Cut saws utilize a skid plate blade guard system that protects concrete spalling during the cut. A spring-loaded skid plate holds it down and keeps aggregate from pulling out of the slab. The guard system is low-maintenance and heavy duty to withstand extended use on the job.



Remember: 2 HOURS after concrete finishing and before the final set.

Why You Need to Use the True Early Entry™ System

Uncontrolled Cracks

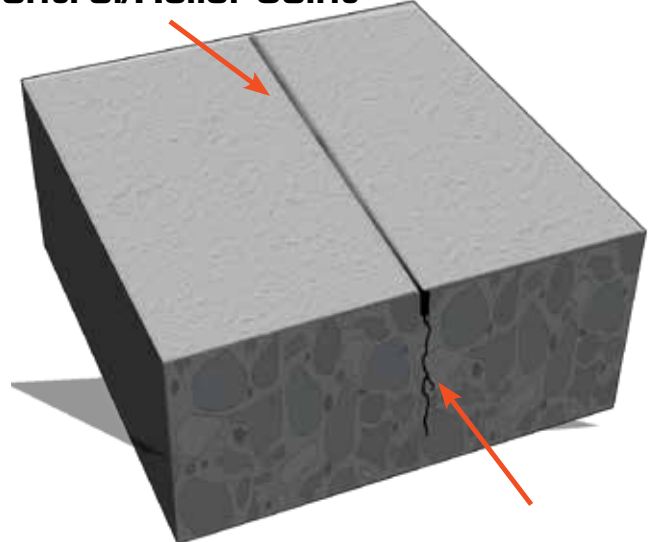


Uncontrolled Cracks

Concrete Without Control/Relief Joint

Without a control or relief joint made into the material, heat and cold aligned with curing can cause expanding and contracting of the concrete, creating uncontrolled cracks throughout. Those cracks will eventually create ruptures and sections that can pull apart from the rest of the material.

Control/Relief Joint



Concrete With Control/Relief Joint

Making a controlled cut in the concrete **CONTROLS** where the cracks appear. When this procedure is done in determined spaced sections, the damage and cracking is kept at a minimum which prolongs the life of the concrete slab.

CVG1-PRO DUST CONTAINMENT VACUUM

**CORE
VAC**

CFM - 1,100

HEPA FILTERS

Gasoline FEATURES

- Designed for the contractor who requires a large amount of dust containment.
- NEVER-FAIL patented cleaning system
- Lever style lowering dump system for drum
- Heavy duty casters allow for easy mobility for dumping and transport
- Offers a 5" hose allowing larger air volume and two additional 2" hose inlets for smaller tools
- Less filter cleaning and adaptability to all shrouded equipment

✓ **OSHA COMPLIANT**
with the First-Cut™ System



Vacuum Info

Port Size	CFM
2" - 5"	1100

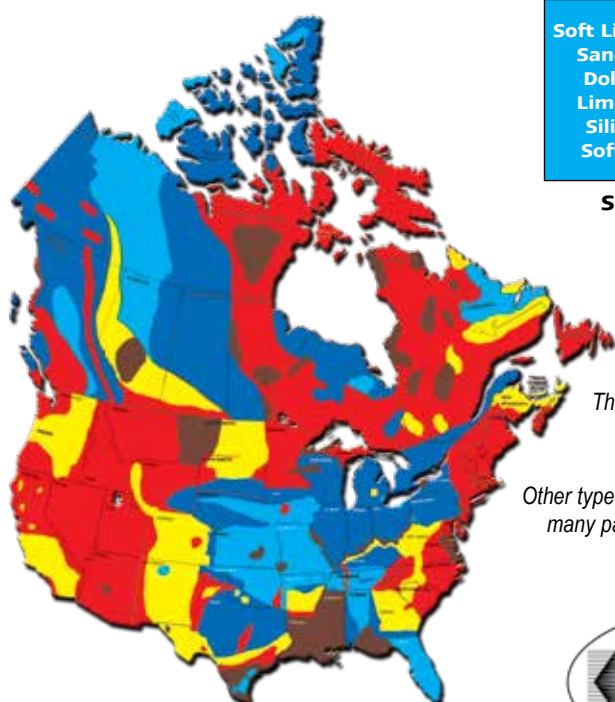
All testing has been completed in a controlled environment using an air velocity meter and a mechanical gauge measured at the neck of each vacuum. These figures should be used as a reference only.

**For Use on the
CC190FC
First-Cut Early Entry Saws
and Competition Early
Entry Saws**

SPECIFICATIONS

Vacuum Hoses	5" x 15' standard with quick-release clamps
Wheels	Two 5" 200lb rubber Two 5" 200lb swivel caster
CFM	1100
Height	59" (150cm)
Length	34-1/2" (88cm)
Width	28" (71cm)
Weight	375 lbs. (170kg)

CORE VAC CVG1-PRO		
Description	Part #	Cat #
CVG1-PRO Honda gas vacuum for CC190PROFC w/hoses	5801910	111653
Vacuum side cover plate attachment for CC190PROFC	2708358	80580
Vacuum adapter 3" to 5"	2504846	82102
HEPA Twin Filter	2508947	105768
6 Mil Bag Liner (50 bags) for CVG1-PRO	2506170	83300



Soft Limestone
Sandstone
Dolomite
Limestone
Siliceous
Soft Shell

SOFT

Pit Gravel
Limestone
Dolomite

MEDIUM SOFT

Med. Hard
River Rock
Med. Traprock
Decomposed
Granite
Med. Crushed
Gravel

MEDIUM

Granite
Slate
Traprock
Basalt
Quartzite

**MEDIUM
HARD**

Hard Chert
Quartz
Flint Rock
Hard River
Rock

**VERY HARD
/HARD**

*These are the basic aggregates
found in the shown areas.*

*Other types of aggregate can be found in
many parts of the U.S. and Canada*

BLADE SPECIFICATIONS

FIRST-CUT SPECIFICATION	Aggregate Hardness (see map)
1000/2000	Very Hard/Hard
3000	Medium Hard
4000	Medium
5000	Medium Soft
6000	Soft



DIAMOND PRODUCTS LIMITED
333 Prospect St., Elyria, OH 44035 U.S.A.
800-321-5336
diamondproducts.com