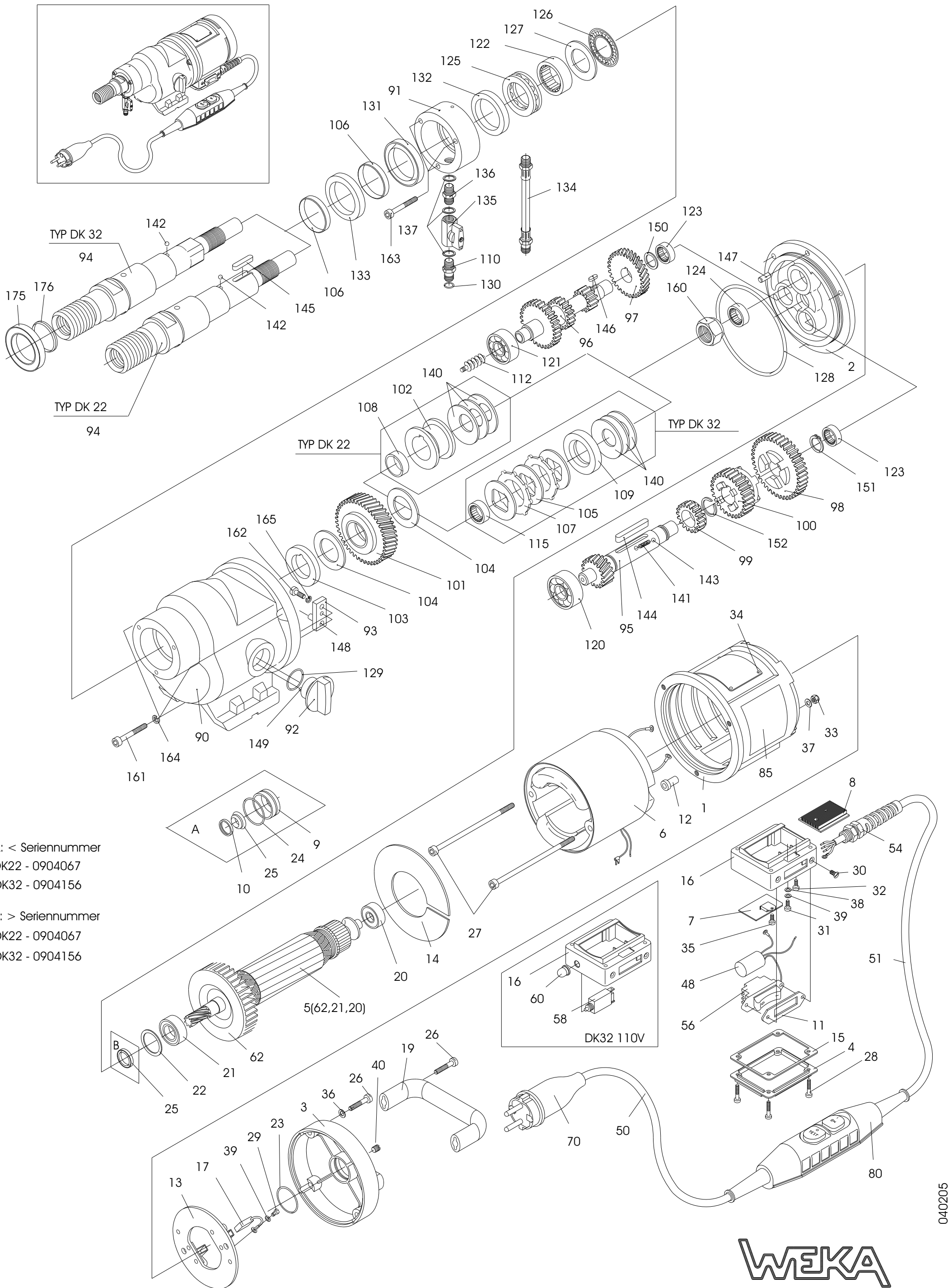


DIAMANT - KERNBOHRMASCHINE TYP DK 22 (L,S), DK 32



A: < Seriennummer
DK22 - 0904067
DK32 - 0904156

B: > Seriennummer
DK22 - 0904067
DK32 - 0904156

Fig	Req.	Description	Weka Part	DP Part	Fig	Req.	Description	Weka Part	DP Part
1	1	Motorcase	DK20101	2700831	90	1	Gear Box	DK20201	2700870
2a	1	Intermediate Flange	DK20102	2700832	91	1	Water Supply Bush	DK20202	2700871
2b	1	Intermediate Flange New Style	DK20102-1	2703255	92	1	Gear Change Grip	DK20203	2700872
3	1	Motor Top Hood	DK20103	2700833	93	1	Gear Change Lever	DK20205	2700695
4	1	Terminal Case Cover	DK20106	2700834	94	1	Drilling Spindle 1-1/4" UNC	DK20206	2700874
5a	1	Armature w/Fan & Bearings 230V	DK20108	2701523	95	1	Gear Change Shaft	DK20207	2700875
5b	1	Armature w/Fan & Bearings 110V	DK20108.11	2700765	1	1	Gear Change Shaft Type L	DK20207L	2701530
5c	1	Armature w/Fan & Bearings 230V	DK20108-1	2703251	1	1	Gear Change Shaft Type S	DK20207S	2701082
		New Type			96	1	Pinion Shaft	DK20208	2700876
5d	1	Armature w/Fan & Bearings 110V	DK20108/11-1	2703252	97	1	Spur Wheel	DK20209	2700877
		New Type			98	1	Gear Wheel 1	DK20212	2700878
6	1	Field Compl. 230V	DK20109	2701524	99	1	Gear Wheel 3	DK20213	2700879
	1	Field Compl. 110V	DK20109.11	2700836	100	1	Slide Gear Wheel	DK20214	2700880
9	1	Seal Bush	DK20113	2700837	101	1	Spindle Wheel	DK20215	2700881
10	1	Fixing Ring	DK20114	2700838	1	1	Spindle Wheel Type L	DK20215L	2701531
11	1	Switch Sealing	DK20121	2701584	1	1	Spindle Wheel Type S	DK20215S	2701078
12	2	Field Screw Insulating Sleeve	DK20116	2700839	102	1	Pressure Shell	DK20216	2700882
13	1	Brush Holder Disc	DK20117	2700840	103	1	Supporting Disc DK22	DK20217	2700883
14	1	Air Conducting Disk	DK20118	2700841	1	1	Supporting Disc Type L	DK20217	2700883
15	1	Terminal Case Sealing	DK40122	2701080	1	1	Supporting Disc Type S	DK40217	2701083
16a	1	Terminal Case 110V/230V used w/fig58	DK30130/11	2701396	104	2	Brake Disc	DK20218	2700884
16b	1	Terminal Case110/ 230V used w/fig18a,b	DK30130	2703262	106	2	Shaft Wearing Sleeve	DK20210	2701064
17	2	Carbon Brush 230V	DK21025	2701532	108	1	Bearing Socket	DK20220	2701079
	2	Carbon Brush 110V	DK20125.11	2700845	110	1	Quick Connect Nipple	DK20225	2700706
18	1	Start Current Limiting Device 230V	DK20500	2700766	120	1	Ball Bearing 6302	6063020	2700791
18a	1	Electronic Module 230V	DK20510	2703257	121	1	Ball Bearing 6201	6062010	2700792
18b	1	Electronic Module 110V	DK20510/11	2703258	122	1	Needle Bearing	6330200	2700793
	1	Cooling Profile	DK30140	2703261	123	2	Needle Bush	6314120	2700794
20	1	Ball Bearing 6201 2Z	6062012	2700846	124	1	Needle Bush	6320160	2700795
21	1	Ball Bearing 6002 Z	6060021	2700773	125	1	Thrust Ball Bearing	6551106	2700796
22	1	Compensation Washer	2632201	2700848	126	1	Thrust Needle Bearing	6530470	2700797
23	1	O-Ring RDR32X3	4532003	2700849	127	1	Thrust Bearing Washer	6530471	2700798
24	1	O-Ring RDR28x1.5	4528015	2700850	128	1	O-Ring RDR102x3	5510203	2700799
25a	1	V-Seal	5112000	2700669	129	1	O-Ring RDR20x3	5520003	2700711
25b	1	Rotary Shaft Seal "New"	5012247	2703241	130	1	O-Ring RDR11x2.5	5511025	2700712
25c	1	Modified Sealing Bushing	DK20113-1	2703250	131	1	Rotary Shaft Seal 40x52x7	5040527	2700802
26	4	Hex. Soc. Head Screw M6x35	0106035	2700852	132	1	Rotary Shaft Seal 38x50x7	5038507	2700803
27	2	Hex. Soc. Head Screw M5x120	0105120	2700853	133	1	Rotary Shaft Seal 40x52x7S	5040521	2700804
28	4	Fill. Head Screw M4x40	0204040	2700854	135	1	Ball Valve	7014001	2700715
29	2	Fill. Head Screw M4x6	0304006	2700674	1	1	Grip for Ball Valve	7014005	2700925
30	2	Slot. Count. Head ScrewM4x6	0414006	2700856	136	1	Double Nipple	7014002	2700716
31	1	Slot. Pan Head Screw M4x6	0304006	2700674	137	3	Sealing Ring	7014003	2700717
32	1	Pan Head Tapping Screw 3.9x9.5	0539095	2700675	140	3	Disk Spring	4045224	2700809
33	2	Hexagon Nut M5	1005000	2700858	141	1	Pressure Spring	4305235	2700810
34	4	Round Head Grooved Pin 2.3x4	2223004	2700678	142	1	Ball 5	2205000	2700811
36	4	Locking Washer SM6	1806000	2700826	143	2	Ball 4	2204000	2700720
37	2	Curved Spring Washer A5	1805137	2700861	144	1	Parallel Key A6x6x45	3006045	2700813
38	1	Curved Spring Washer A4	1804137	2700680	145	1	Parallel Key A6x6x30	3006030	2700814
39	3	Medium Washer 4.3	1804433	2700681	146	1	Parallel Key A4x4x10	3004010	2700815
40	1	Slot. Set Screw M6x5	0506005	2700864	147	1	Parallel Pin 6m6x10	2506010	2700816
48	1	Int. Suppr. Capacitor	DK10130	2700683	148	1	Parallel Pin 5m6x15	2506015	2700817
50	1	Cord 230V AWG16	8738152	2701541	149	1	Parallel Pin 3m6x16	2503016	2700723
		Cord 110V AWG14	8738254	2700866	150	1	Shim Ring PS14x20x1	1914201	2700819
54	1	Cord Gland 230V	8800011	2700867	151	1	Retaining Ring 16x1	3516001	2700820
		Cord Gland 110V	8800111	2701054	152	1	Retaining Ring SW20	3620000	2700821
56	1	Motor Switch 230V	8023000	2701543	160	1	Hexagon Nut M22x1.5	1022015	2700822
	1	Motor Switch 110V	8023005	2700886	161	3	Hex. Soc. Head Screw M6x50	0106050	2700823
58	1	Motor Protective Switch w/Hood 230V	8010612	2701537	162	1	Hex. Soc. Head Screw M5x12	0105012	2700733
	1	Motor Protective Switch w/Hood 110V	8057025	2700769	163	3	Hex. Soc. Head Screw M5x45	0105045	2700825
60	1	Protective Hood 230V	8001002	2700868	164	3	Locking Washer SM6	1806000	2700826
		Protective Hood 110V	8001005	2701309	165	1	Locking Washer SM5	1805000	2700735
62	1	Fan	DK20105	2700692	170	1	Pointing Sticker	DK20620	2700737
					1	1	Gear Oil 80-90W 400ml(13.53 oz)	9030001	2700829
					1	1	B-Valve Assembly	7014001	2700806