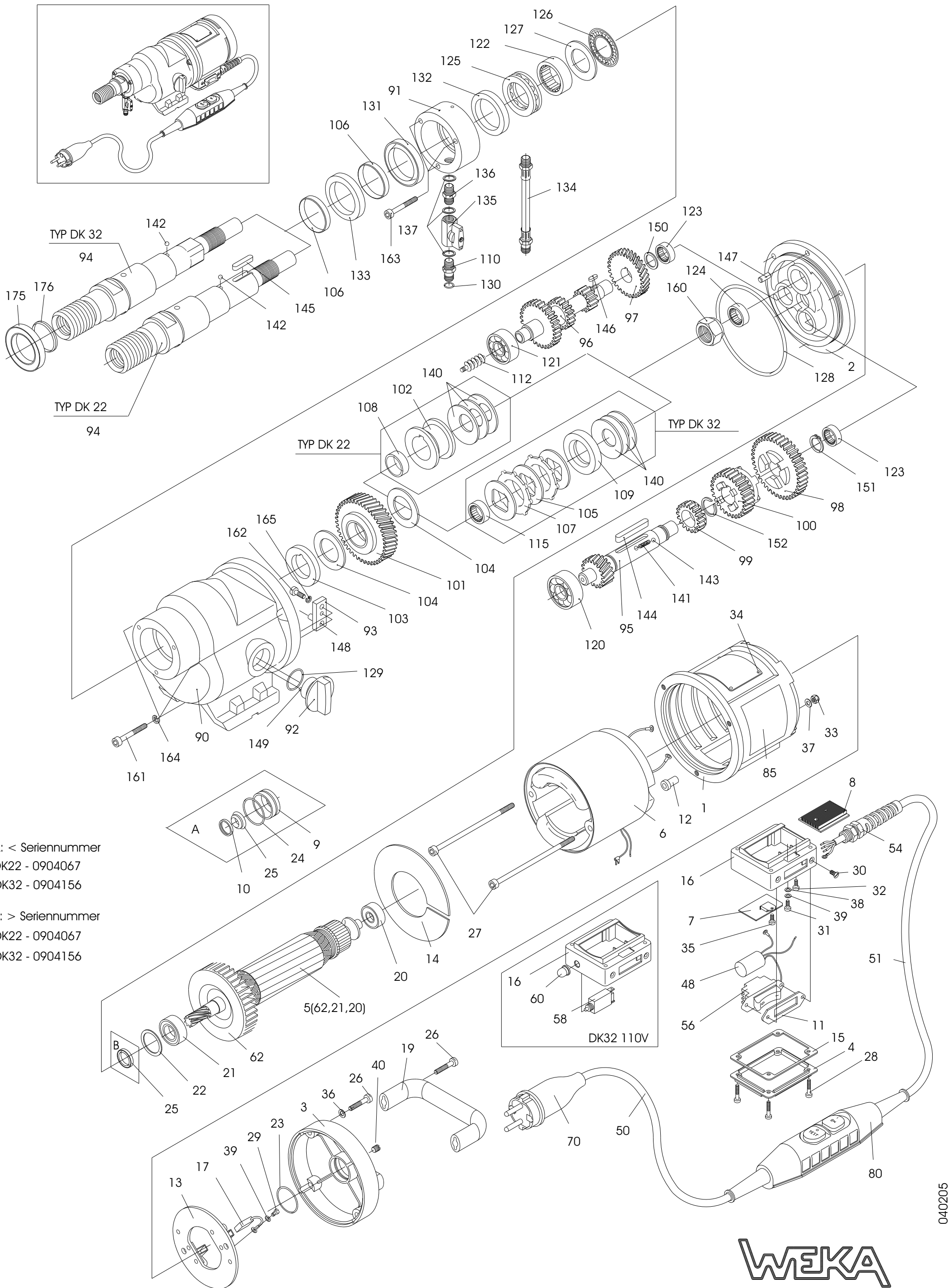


DIAMANT - KERNBOHRMASCHINE TYP DK 22 (L,S), DK 32



A: < Seriennummer  
DK22 - 0904067  
DK32 - 0904156

B: > Seriennummer  
DK22 - 0904067  
DK32 - 0904156

SPARE PARTS LIST TYPE DK32 - Motor

DK32

Revised 12/14/2005

Fig	Req.	Description	Weka Part	DP Part	Fig	Req.	Description	Weka Part	DP Part
1	1	Motorcase	DK20101	2700831	90	1	Gear Box	DK30201	2701924
2	1	Intermediate Flange	DK30102	2702170	91	1	Water Supply Bush	DK20202	2700871
2b		Intermediate Flange <b>New Style</b>	DK30102-1	2703256	92	1	Gear Change Grip	DK20203	2700872
3	1	Motor Top Hood	DK20103	2700833	93	1	Gear Change Lever	DK30205	2701925
4	1	Terminal Case Cover	DK20106	2700834	94	1	Drilling Spindle 1-1/4" UNC	DK30206	2701926
5a	1	Armature w/Fan & Bearings 230V	DK30108	2701920	95	1	Gear Change Shaft	DK30207	2701927
5b	1	Armature w/Fan & Bearings 110V	DK30108.11	2701921	96	1	Pinion Shaft	DK30208	2701928
5c		Armature w/Fan & Bearings 230V <b>New Type</b>	DK30108-1	2703253	97	1	Spur Wheel	DK30209	2701929
5d		Armature w/Fan & Bearings 110V <b>New Type</b>	DK30108/11-1	2703254	98	1	Gear Wheel 1	DK30212	2701930
					99	1	Gear Wheel 3	DK30213	2701931
6	1	Field Compl. 230V	DK30109	2701922	100	1	Slide Gear Wheel	DK30214	2701932
	1	Field Compl. 110V	DK30109.11	2701923	101	1	Spindle Wheel	DK30215	2701933
9	1	Seal Bush	DK20113	2700837	103	1	Supporting Disc DK32	DK40217	2701083
10	1	Fixing Ring	DK20114	2700838	104	2	Brake Disc A	DK30218	2701934
11	1	Switch Sealing	DK20121	2701584	105	3	Pressure Disc	DK30219	2701935
12	2	Field Screw Insulating Sleeve	DK20116	2700839	106	2	Shaft Wearing Sleeve	DK20210	2701064
13	1	Brush Holder Disc	DK20117	2700840	107	2	Brake Disc B	DK30221	2701941
14	1	Air Conducting Disk	DK20118	2700841	109	1	Pressure Ring	DK30216	2701936
15	1	Terminal Case Sealing	DK40122	2701080	110	1	Quick Connect Nipple	DK20225	2700706
16a	1	Terminal Case 110V/230V used w/fig 58a,b	DK30130/11	2701396	112	1	Feed Worm	DK30230	2701937
16b		Terminal Case 230V used w/18a	DK30130	2703262	115	1	Needle Cage	6326130	2701938
16c		Terminal Case 110V used w/18b	DK30131	2703263	120	1	Ball Bearing 6302	6063020	2700791
17	2	Carbon Brush 230V	DK21025	2701532	121	1	Ball Bearing 6201	6062010	2700792
	2	Carbon Brush 110V	DK20125.11	2700845	122	1	Needle Bearing	6330200	2700793
18	1	Start Current Limiting Device 230V	DK20500	2700766	123	2	Needle Bush	6314120	2700794
18a		Electronic Module 230V	DK30510	2703259	124	1	Needle Bush	6320160	2700795
18b		Electronic Module 110V	DK30510/11	2703260	125	1	Thrust Ball Bearing	6551106	2700796
18c		Cooling Profile	DK30140	2703261	126	1	Thrust Needle Bearing	6530470	2700797
19	1	Handle (use #2700823 for bolt)	DK30105	2704245	127	1	Thrust Bearing Washer	6530471	2700798
20	1	Ball Bearing 6201 2Z	6062012	2700846	128	1	O-Ring DR102x3	5510203	2700799
21	1	Ball Bearing 6002 Z	6060021	2700773	129	1	O-Ring RDR20x3	5520003	2700711
22	1	Compensation Washer	2632201	2700848	130	1	O-Ring RDR11x2.5	5511025	2700712
23	1	O-Ring RDR32X3	4532003	2700849	131	1	Rotary Shaft Seal 40x52x7	5040527	2700802
24	1	O-Ring RDR28x1.5	4528015	2700850	132	1	Rotary Shaft Seal 38x50x7	5038507	2700803
25	1	V-Seal	5112000	2700669	133	1	Rotary Shaft Seal 40x52x7S	5040521	2700804
25b	1	Rotary Shaft Seal "New"	5012247	2703241	134	1	Hose Piece	DK30235	2701939
25c	1	<b>Modified Sealing Bushing</b>	DK20113-1	2703250	135	1	Ball Valve	7014001	2700715
26	4	Hex. Soc. Head Screw M6x35	0106035	2700852		1	Grip for Ball Valve	7014005	2700925
27	2	Hex. Soc. Head Screw M5x120	0105120	2700853	136	1	Double Nipple	7014002	2700716
28	4	Fill. Head Screw M4x40	0204040	2700854	137	3	Sealing Ring	7014003	2700717
29	2	Fill. Head Screw M4x6	0204006	2700855	140	3	Disk Spring	4045224	2700809
30	2	Slot. Count. Head Screw M4x6	0414006	2700856	141	1	Pressure Spring	4305235	2700810
31	1	Slot. Pan Head Screw M4x6	0304006	2700674	142	1	Ball 5	2205000	2700811
32	1	Pan Head Tapping Screw 3.9x9.5	0539095	2700675	143	2	Ball 4	2204000	2700720
33	2	Hexagon Nut M5	1005000	2700858	144	1	Parallel Key A6x6x45	3006045	2700813
34	4	Round Head Grooved Pin 2.3x4	2223004	2700678	146	1	Parallel Key A4x4x10	3004010	2700815
36	4	Locking Washer SM6	1806000	2700826	147	1	Parallel Pin 6m6x10	2506010	2700816
37	2	Curved Spring Washer A5	1805137	2700861	148	1	Parallel Pin 5m6x15	2506015	2700817
38	1	Curved Spring Washer A4	1804137	2700680	149	1	Parallel Pin 3m6x16	2503016	2700723
39	3	Medium Washer 4.3	1804433	2700681	150	1	Shim Ring PS14x20x1	1914201	2700819
40	1	Slot. Set Screw M6x5	0506005	2700864	151	1	Retaining Ring 16x1	3516001	2700820
48	1	Int. Suppr. Capacitor	DK10130	2700683	152	1	Retaining Ring SW20	3620000	2700821
50	1	Cord 230V AWG16	8738152	2701541	160	1	Hexagon Nut M22x1.5	1022015	2700822
		Cord 110V AWG 10	8738043	2702239	161	3	Hex. Soc. Head Screw M6x50	0106050	2700823
54	1	Cord Gland 230V	8800011	2700867	162	1	Hex. Soc. Head Screw M5x12	0105012	2700733
		Cord Gland 110V	8800111	2701054	163	3	Hex. Soc. Head Screw M5x45	0105045	2700825
56	1	Motor Switch 230V	8023000	2701543	164	3	Locking Washer SM6	1806000	2700826
	1	Motor Switch 110V	8023005	2700886	165	1	Locking Washer SM5	1805000	2700735
58	1	Motor Protective Switch w/Hood 230V	8057016	2701918		1	Gear Oil 80-90W 400ml(13.53 oz)	9030001	2700829
	1	Motor Protective Switch w/Hood 110V	8057030	2701919		1	B-Valve Assembly	7014001	2700806
60	1	Protective Hood 230V	8001005	2701309			(Includes Fig.110,135,136,137)		
		Protective Hood 110V	8001005	2701309	175	1	Super Bit Spacer 1-1/4"	n/a	4600502
62	1	Fan	DK20105	2700692					