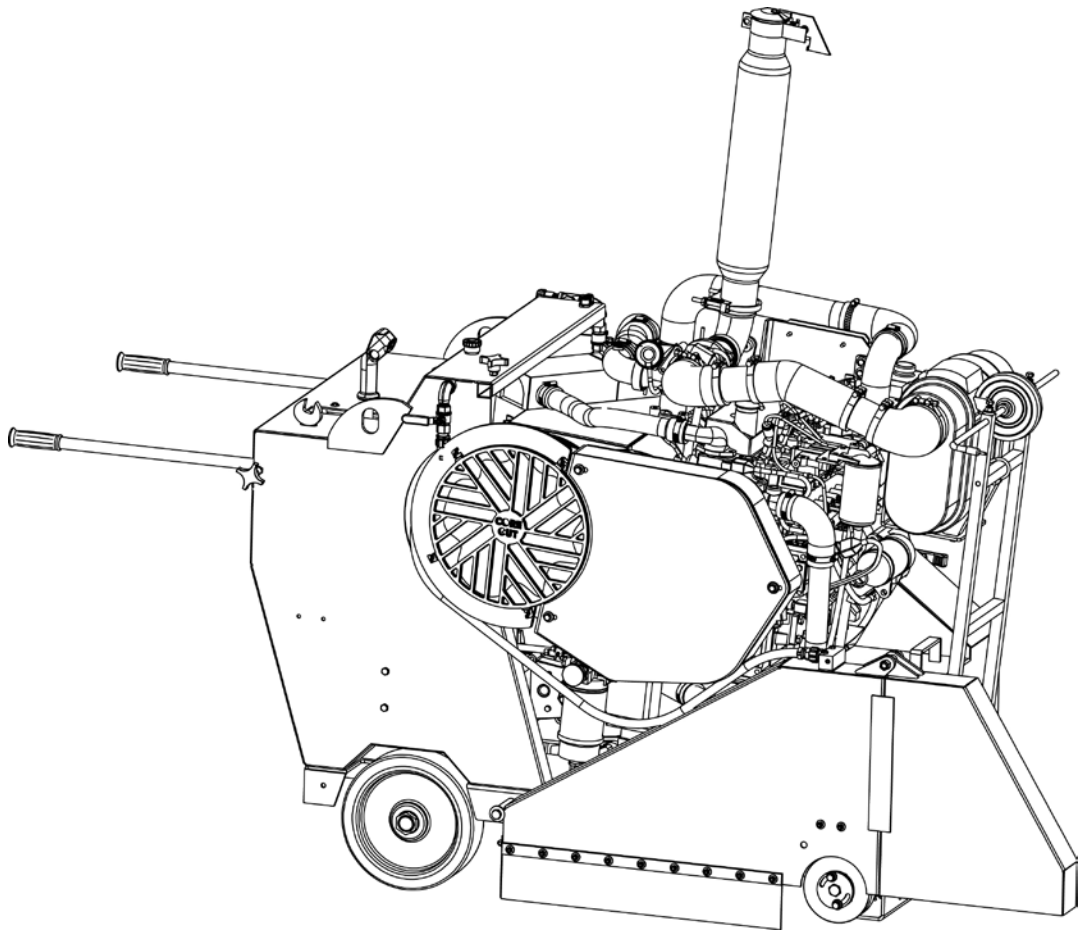


**DIAMOND
PRODUCTS**

**CC-110D-SS High Powered
SAW (5801407 & 5801408)**



PARTS MANUAL

JANUARY 2015

PART NUMBER 1803050

WWW.DIAMONDPRODUCTS.COM

Saw Specifications.....	1	Radiator / CAC Assembly.....	20
Blade Flange.....	2	Aux. Drive Assembly	22
Upright Dash Assembly	3	Blade Collar Assembly	23
Dash Panel Assembly.....	4	Blade & Jack Shaft Assemblies.....	24
Blade Hub Guard Assembly	5	Battery Assembly.....	26
Drive Lever Assembly.....	6	Chain Guard Assembly	27
Control Grip Assembly.....	8	Hydrostatic Transaxle Gearbox Assembly	30
Jackshaft Guard Assembly.....	10	Hydrostatic Transmission Assembly	32
Skid Plate Assembly	11	Fuel Tank Assembly.....	33
Transmission Guard Assembly.....	12	Rear Axle & Undercarriage Assembly.....	34
Engine Assembly.....	13	Pointer Assembly.....	36
Engine Mount Assembly	14	Parking Brake Assembly	37
Starter Solenoid Assembly	15	Fifth Wheel Assembly.....	38
Fan Assembly	16	Blade Guard Assembly.....	40
Air Intake Assembly.....	18	Maintenance Records	41
		Warranty.....	42

Unpacking

This machine was inspected and operated before shipment and should not require any additional adjustment prior to its initial use. However, in the unlikely event of damage during shipment, the operator is advised to check out the machine by following the instructions of this manual in operating each of the equipment subsystems.

Uncrate the equipment carefully to prevent damage. Follow the instructions contained in this manual for the assembly and installation of any component parts which may have been removed for shipping purposes.

Check each item making certain that all items are accounted for and in good visual condition before discarding any packing materials. If there is any damaged or missing parts call customer services on our toll free number:

1-800-321-5336.

Contents of Carton

1. Diamond Products CC-110D-SS High Powered Saw
2. Installed Blade Guard
3. Owners/Operators Manual
4. Cummins Engine Manual

Before Starting

This instruction manual describes the operating procedures, care, maintenance, adjustments and safety precautions for proper use of this machine. This equipment is intended for industrial applications by experience operators. It is to be operated in conformance with applicable federal, state and local codes or regulations pertaining to safety, air pollution, noise, etc.

IMPROPER USE OF THIS EQUIPMENT OR IMPROPER MACHINE ALTERATIONS MAY BE EXTREMELY DANGEROUS!

The operator is cautioned against using this machine before having read and fully understood the instructions presented in this manual and in the original manufacturer's instructions provided separately.

USER RESPONSIBILITIES

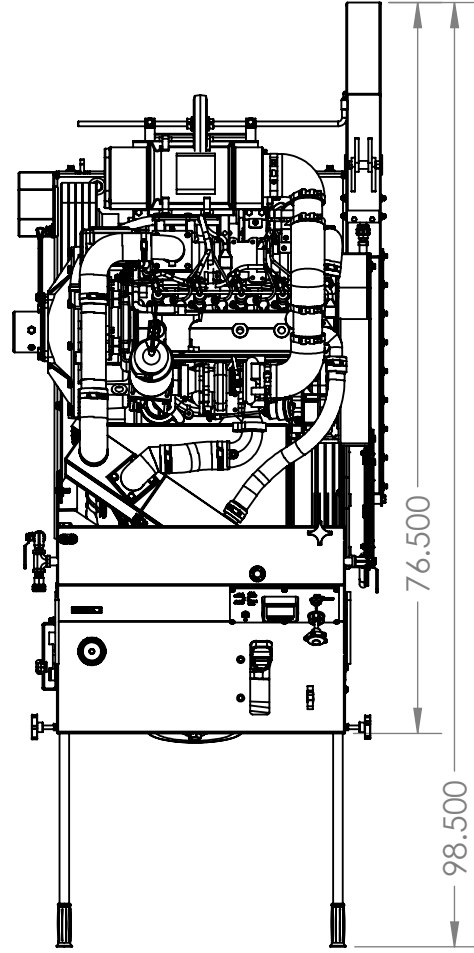
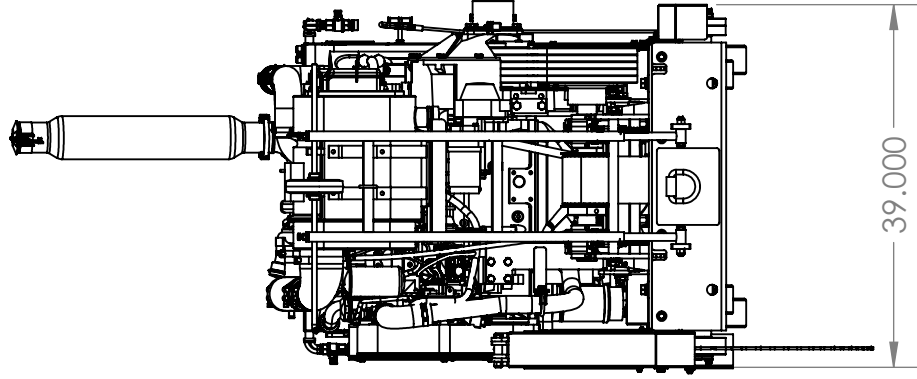
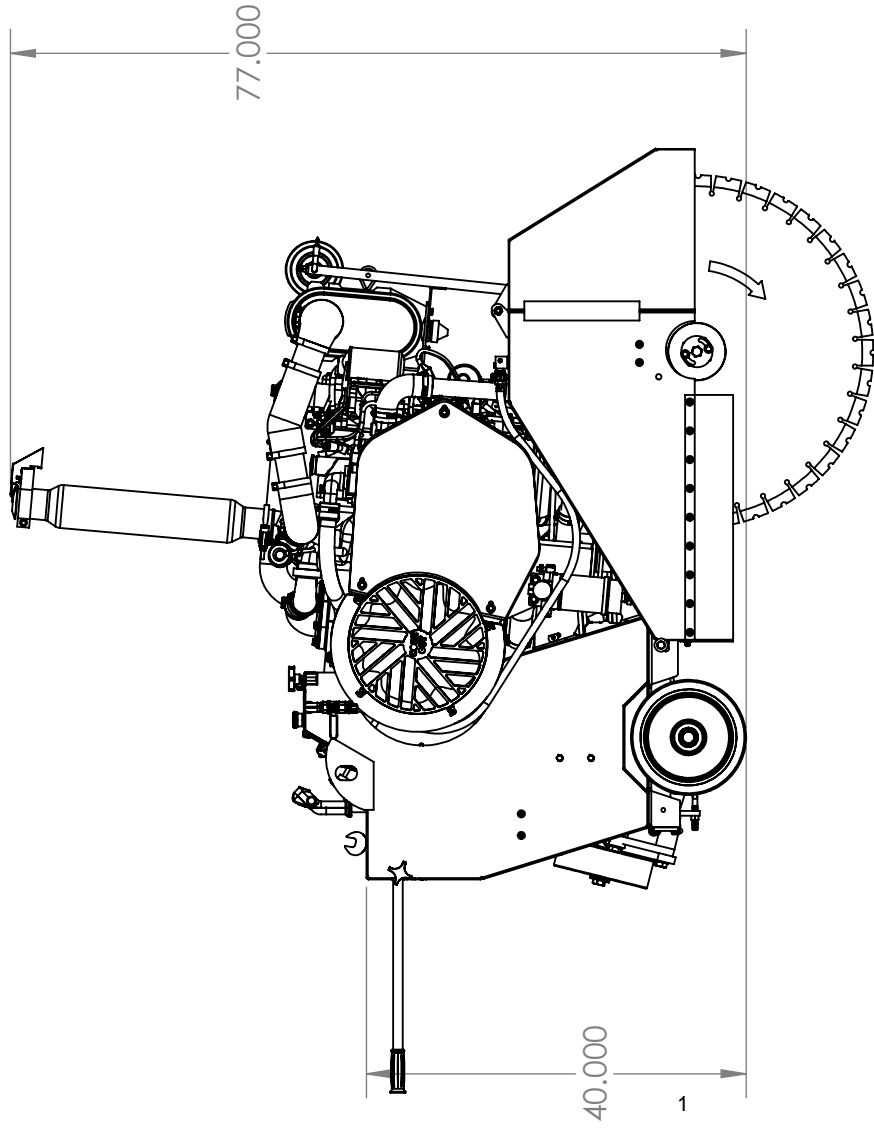
It is the operator's responsibility to use this machine under safe working conditions and to be fully aware of requirements for operator safety and safety of co-workers, observers and public at large. The operator must be aware of the machine's capabilities and limitations and follow the safety precautions in each section of this manual. Periodic maintenance is required, in accordance with instructions herein, to promote safe and reliable operation.

Care is to be taken by the operator to see that all of the safety features furnished with the machine are properly maintained and operational.

It is the responsibility of the operator to provide a safe working environment and to follow proper safety procedures when operating this equipment. Operators must use approved ear protection, safety hat, eye protectors, gloves, safety shoes and any other personal protective equipment required for compliance with standard safety practices or federal, state and local codes and regulations.

CC-110D High Powered Saw

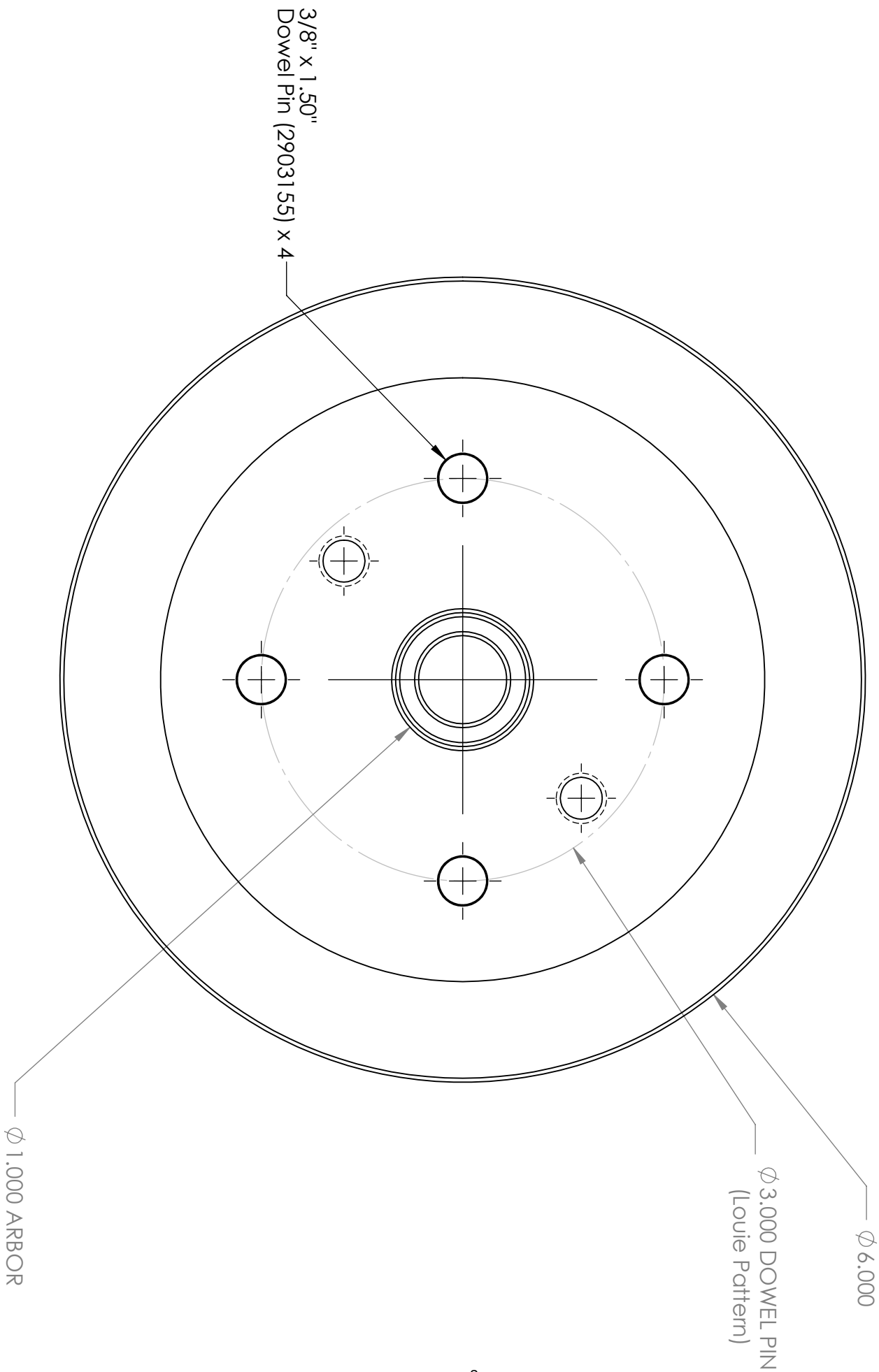
CC-110D-SS 110hp(5801402)



Engine	Cummins QSB3.3 110Hp Turbo Diesel
Max Blade Diameter	30.00"-36.00"
Blade Flange	6.00" Diameter, 1.00" Arbor, 4 on 3.00" 3/8" Pin (Louie)
Blade Mounting	Left And Right Side W/ Safety Lock
Maximum Cutting Depth	14.50" W/36.00" Blade & 11.50" W/ 30.00" Blade
Hydraulics	Electro/Hydraulic Raise Lower & Fifth Wheel Assembly
Transmission	Hydrostatic DPI
Dimensions	L:98.50" W:39.00" H:77.00" Weight: 2250lbs

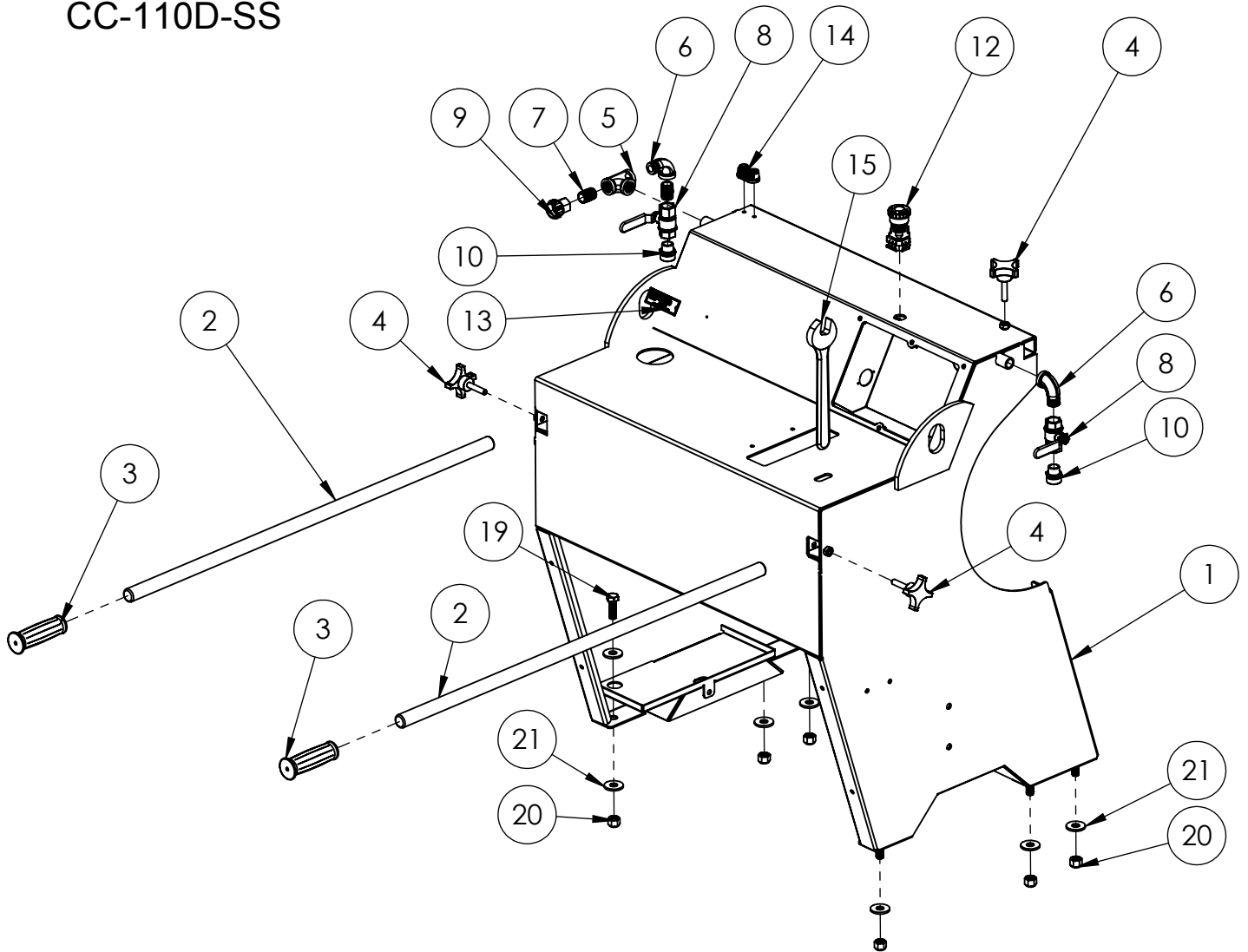
Blade Arbor Pattern

CC-110D-SS



Upright Dash Assembly

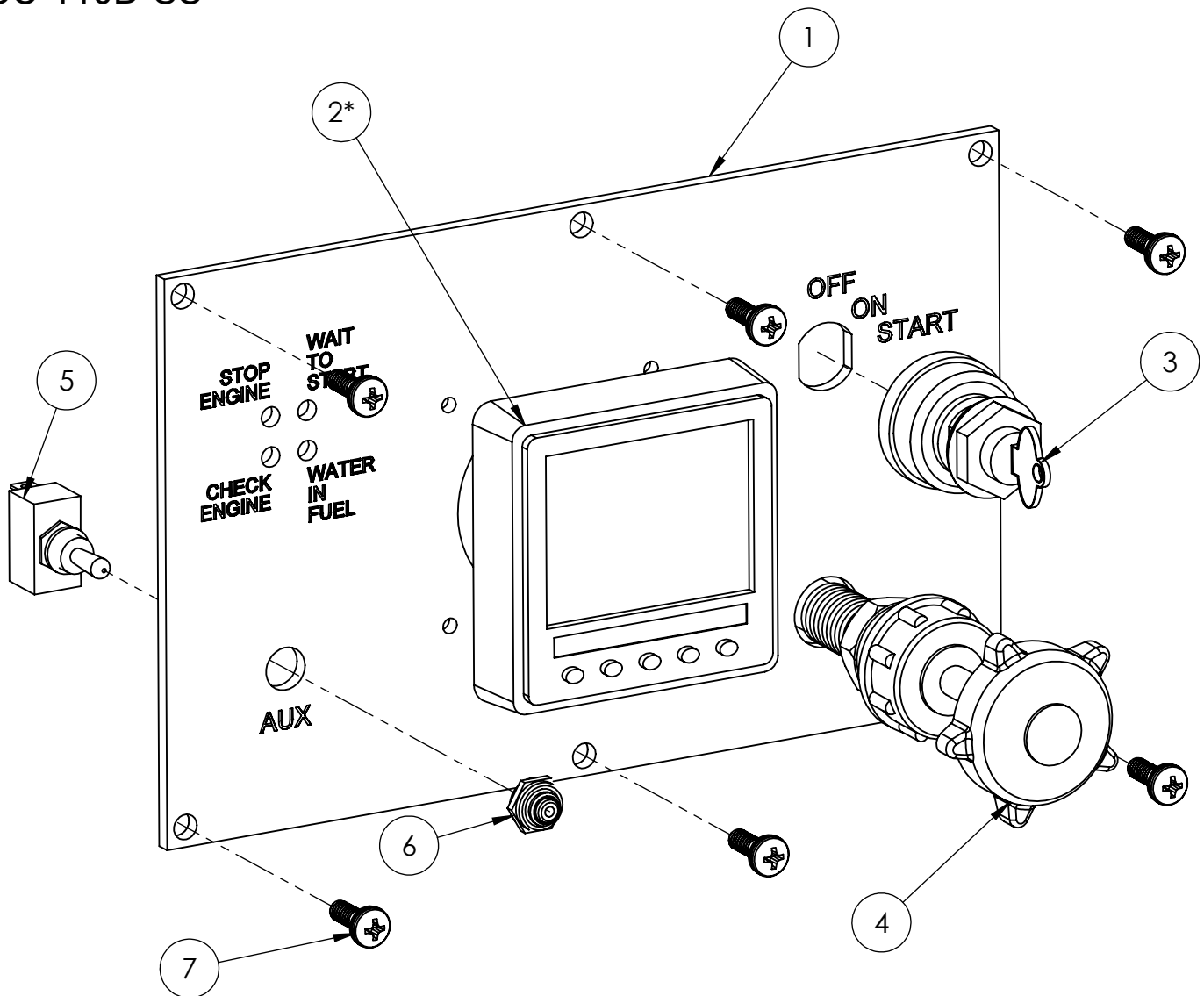
CC-110D-SS



ITEM NO.	PART NUMBER	DESCRIPTION	QTY.
1	2503366	Dash Upright, CC-110D-SS	1
2	6010014	Handle Bar, 36" Long	2
3	2500636	Handle Grip	2
4	2900234	Hand Lock Knob, 3/8"-16	3
5	3200045	Pipe Tee, 1/2" NPT	1
6	3200013	Street Elbow, 1/2" NPT	2
7	3200598	Close Nipple, 1/2" NPT, Brass	2
8	3200027	Water Valve	2
9	3200595	Fitting, 1/2" F. Pipe to 3/4" F. Garden	1
10	3200155	Fitting, 1/2" M. Pipe to 3/4" M. Garden	2
11	2702714	2.00" Cushion Clamp	1
12	2801367	E-Stop Switch	1
13	1800169	DP S/N Nameplate	1
14	2501427	Rope Cleat	1
15	2500211	Wrench, 15/16" Open End	1
16	2900138	5/16-18x1.00 HEX CAP SCREW	1
17	2900039	5/16"-18 Nylock Hex Nut	1
18	2900567	5/16" Flat Washer	1
19	2900499	1/2-13x1.50 HEX CAP SCREW	6
20	2900026	1/2-13 Nylon-Insert Hex Locknut	6
21	2900127	³ 1/2" USS Flat Washer	12

Dash Panel Assembly

CC-110D-SS

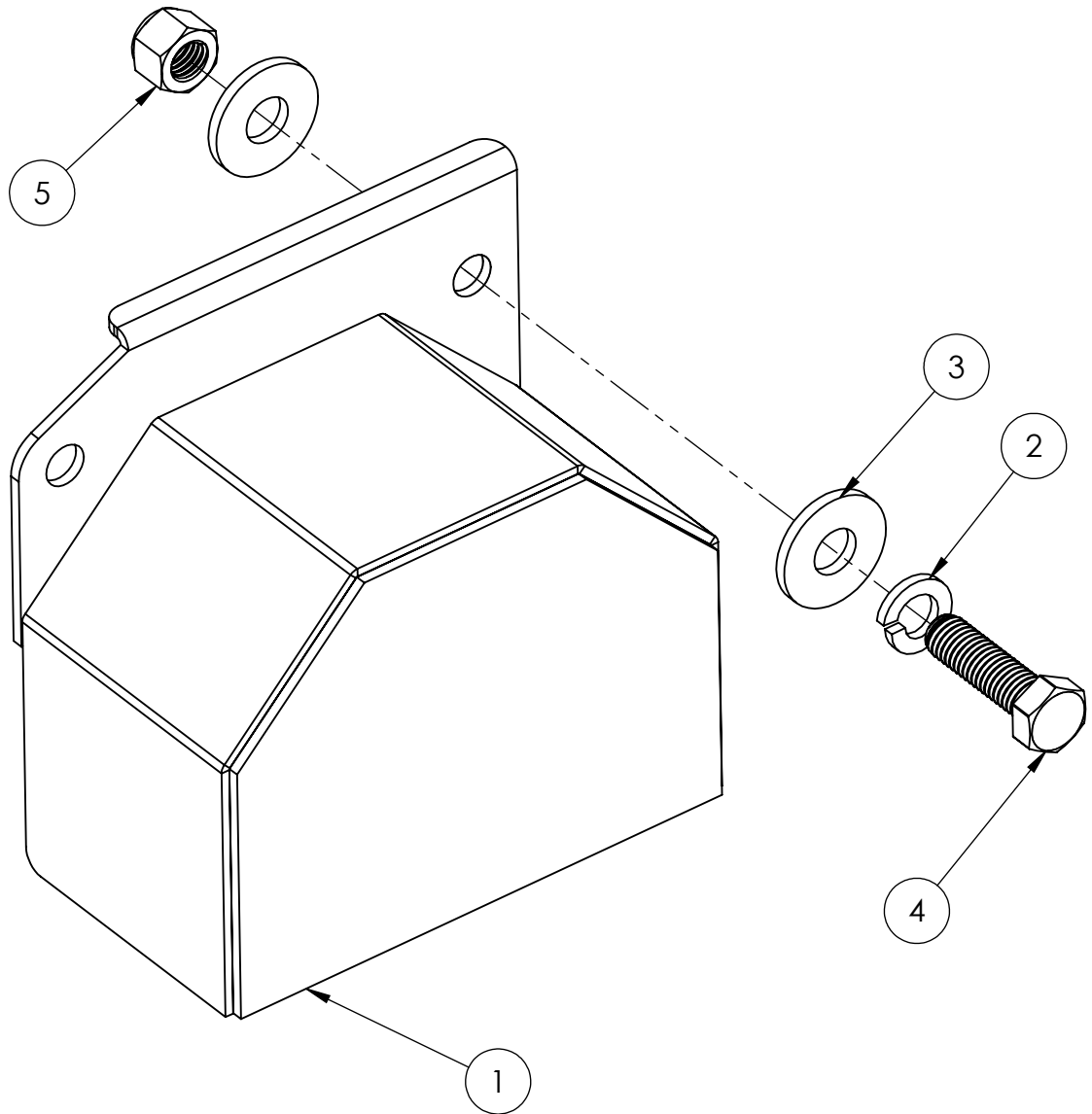


ITEM NO.	PART NUMBER	DESCRIPTION	QTY.
1	2506470	Dash Panel w/LED	1
2	2808084	CanVu Engine Monitor (Color Display)	1
3	2808043	Cummins Key Switch	1
4	2708022	Vernier Throttle Cable, Kohler, 40HP	1
5	2802888	Switch, Toggle, 3- Position	1
6	2502690	Switch Boot	1
7	2902055	1/4-20 x 3/4 PHMS W/Washer	6
8	2808083	Dash Wiring Harness *Not Shown	1
9	2804526	Engine Wiring Harness *Not Shown	1

*NOTE: 2012 & PRIOR UNITS MAY BE EQUIPED WITH A B&W ENGINE MONITOR, THIS UNIT IS PART #2804518.

Blade Hub Guard Assembly

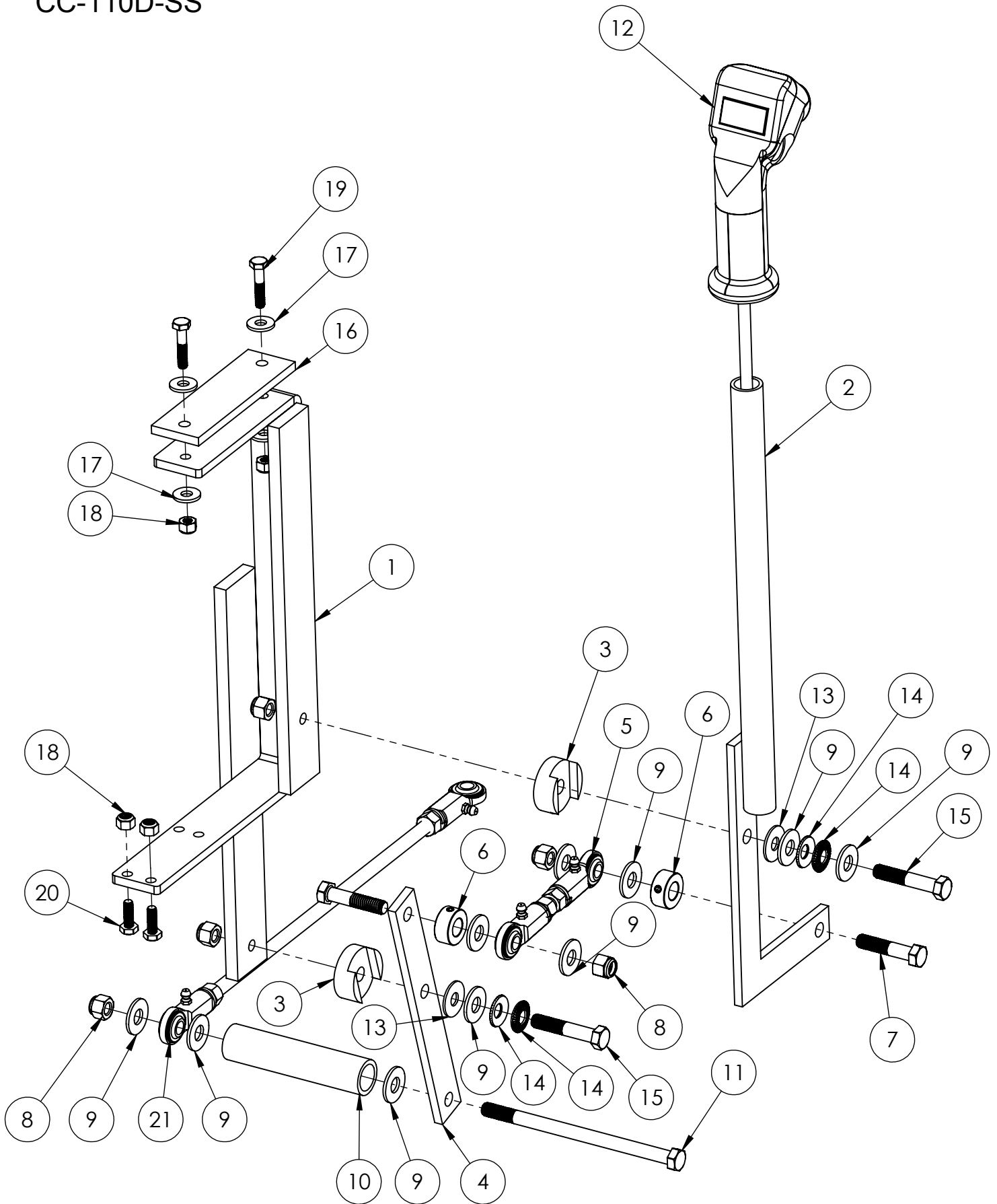
CC-110D-SS



ITEM NO.	PART NUMBER	DESCRIPTION	QTY.
1	2503557	CC-110D-SS Hub Guard	1
2	2900084	1/2 SPLIT LOCK WASHER	1
3	2900127	1/2" USS Flat Washer	2
4	2900139	1/2-13 x 1.75" HHCS	1
5	2900026	1/2-13 Nylon-Insert Hex Locknut	1

Drive Lever Assembly

CC-110D-SS



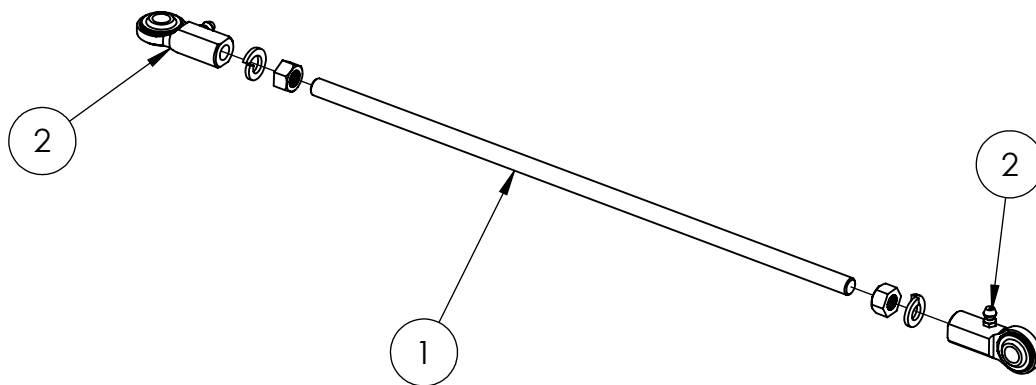
Drive Lever Assembly

CC-110D-SS

ITEM NO.	PART NUMBER	DESCRIPTION	QTY.
1	6010122	Lever Support Weldment	1
2	6070489	Speed Control Lever	1
3	6010055	Friction Spacer	2
4	6010123	Linkage Lever	1
5	6070486	Linkage Assembly 4-1/4"	1
6	2500007	Set Collar, 1/2" with Set Screw	2
7	2900047	3/8-16 x 1.75 Hex Cap Screw	2
8	2900018	Lock Nut, 3/8-16 Nylon	5
9	2903018	USS 3/8" Flat Washer	10
10	6075200	Transmission Linkage Spacer, CC-110D	1
11	2903032	3/8-16 x 6.00 HHCS	1
12	6010319	Control Grip Assembly	1
13	2900153	Friction Washer, 3/8"	2
14	2900474	3/8" Belleville Serrated Washer	4
15	2900060	3/8-16 x 2.00 HHCS (Grade 5)	2
16	2501339	Rubber Support Mount	1
17	2900126	1/4" USS Flat Washer	4
18	2900010	1/4-20 Nylon-Insert Hex Locknut	4
19	2900052	1/4-20 x 1.25" HeHCS (Grade 5)	2
20	2900008	1/4-20 x .750" HHCS	2
21	6070487	Transmission Linkage Assembly, CC-110D	1

Transmission Linkage (6070487)

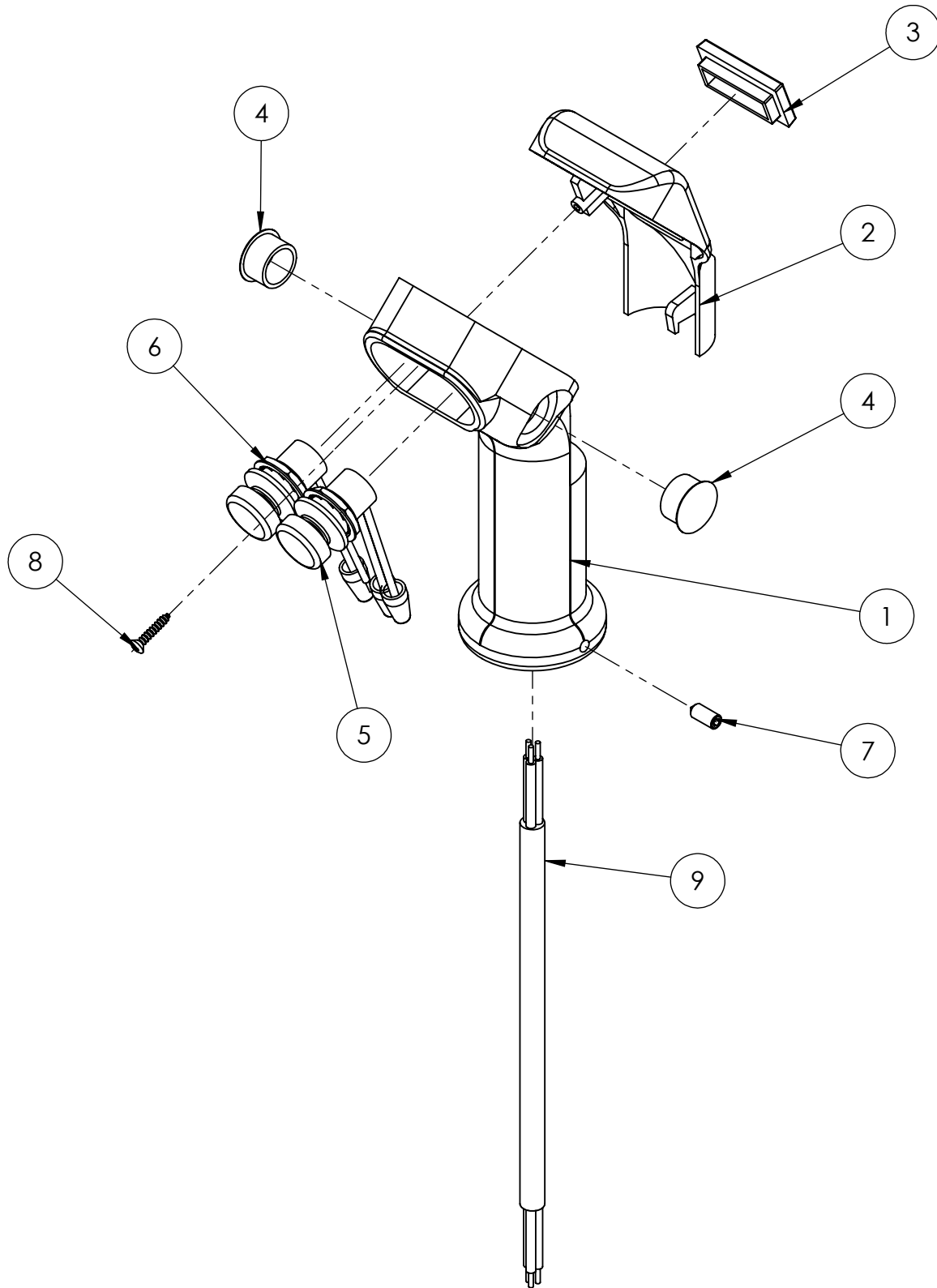
CC-110D-SS



ITEM NO.	PART NUMBER	DESCRIPTION	QTY.
1	6070488	Rod, 3/8-24 x 13.75"	1
2	2500152	Rod End, 3/8-24 Female	2
3	2900006	3/8 Split Lock Washer	2
4	2900148	3/8-24 Steel Hex Nut	2

2 Button Control Grip Assembly (6010319)

CC-110D-SS



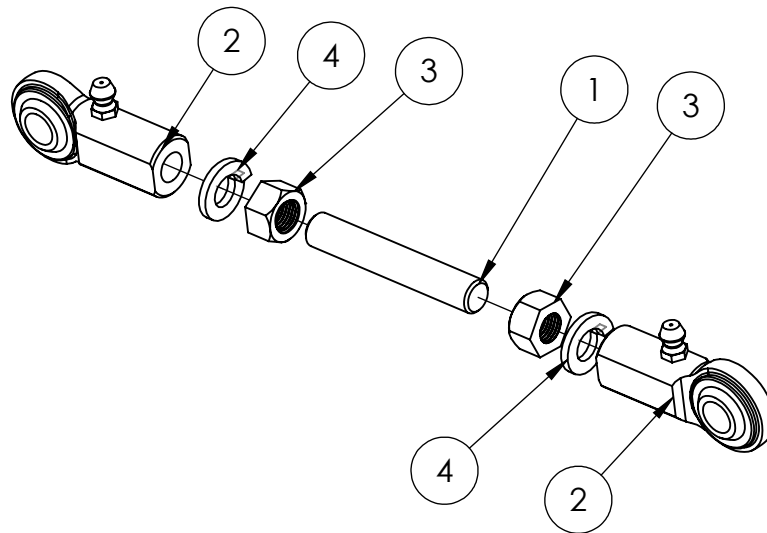
2 Button Control Grip Assembly (6010319)

CC-110D-SS

ITEM NO.	PART NUMBER	DESCRIPTION	QTY.
1	2501280	Control Grip Body	1
2	2501281	Control Grip Cover	1
3	2500644	Plug, Rectangular	1
4	2500694	Plug, 5/8" Hole	2
5	2800372	Pushbutton Switch (B&G)	1
6	2800373	Pushbutton Switch (B&W)	1
7	2900453	Set Screw, Soc. Hd., M5-0.8 x 12mm	1
8	2900452	Machine Screw, Oval Hd., #4 x 5/8"	1
9	2800393	Harness, Hydraulic Pump	1
10	2800002	Wire Nut, 22-16 Gage	3

Linkage Assembly (6070486)

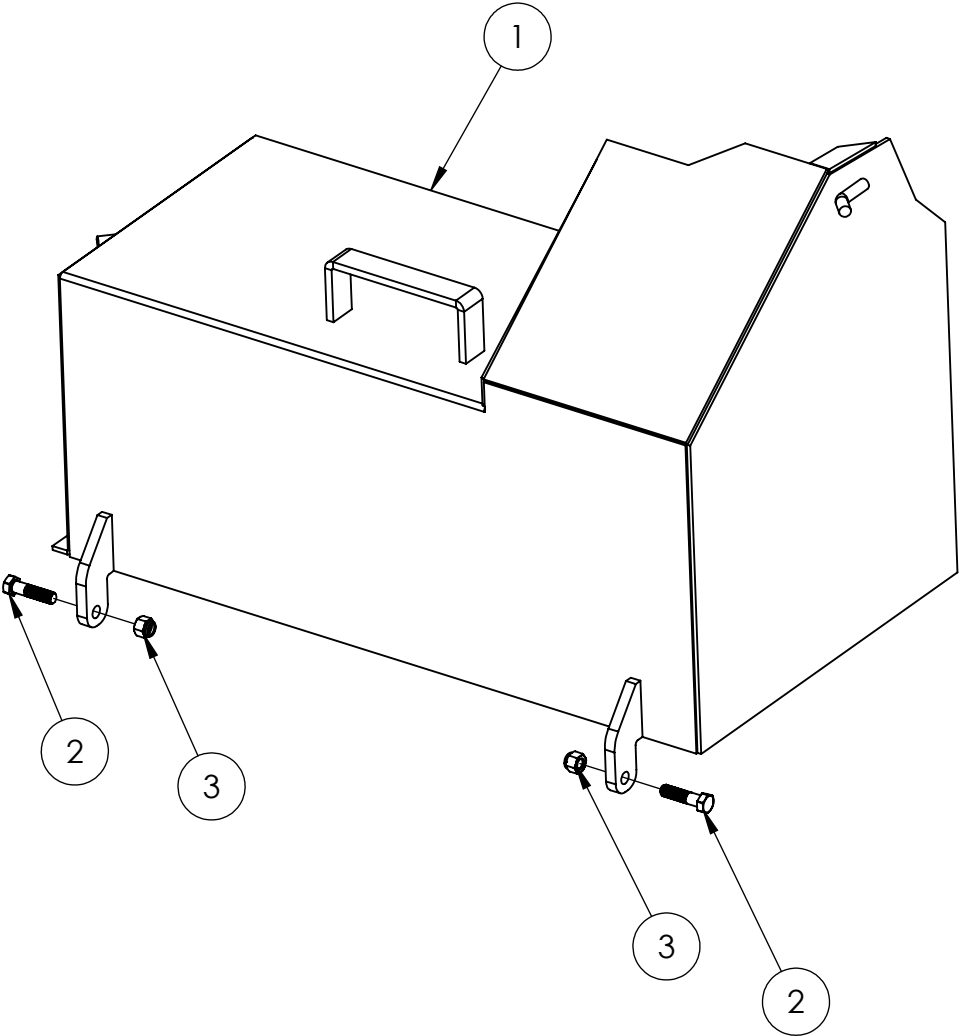
CC-110D-SS



ITEM NO.	PART NUMBER	DESCRIPTION	QTY.
1	6070485	Rod, 3/8-24 x 2-1/4"	1
2	2500152	Rod End, 3/8-24 Female	2
3	2900148	3/8-24 Steel Hex Nut	2
4	2900006	3/8 Split Lock Washer	2

Jackshaft Guard Assembly

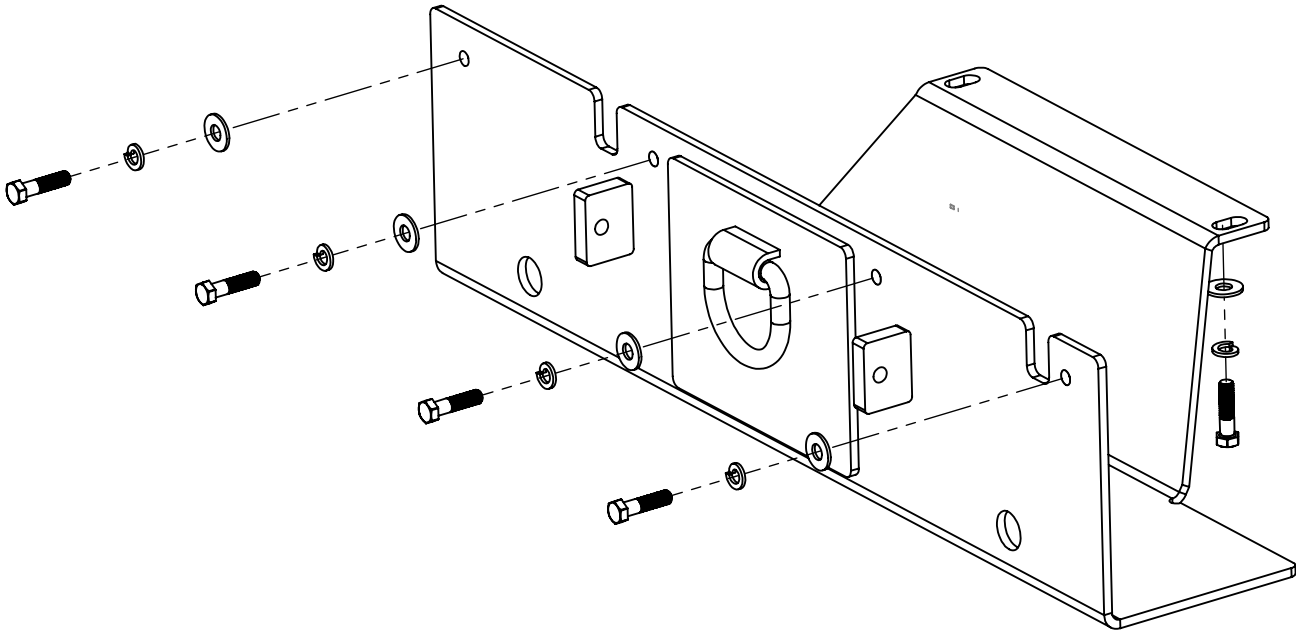
CC-110D-SS



ITEM NO.	PART NUMBER	DESCRIPTION	QTY.
1	6075261	Jackshaft Guard	1
2	2900029	3/8-16 x 1.50 HEX HEAD CAP SCREW	2
3	2900018	Lock Nut, 3/8-16 Nylon	2

Skid Plate Assembly, 30.00"

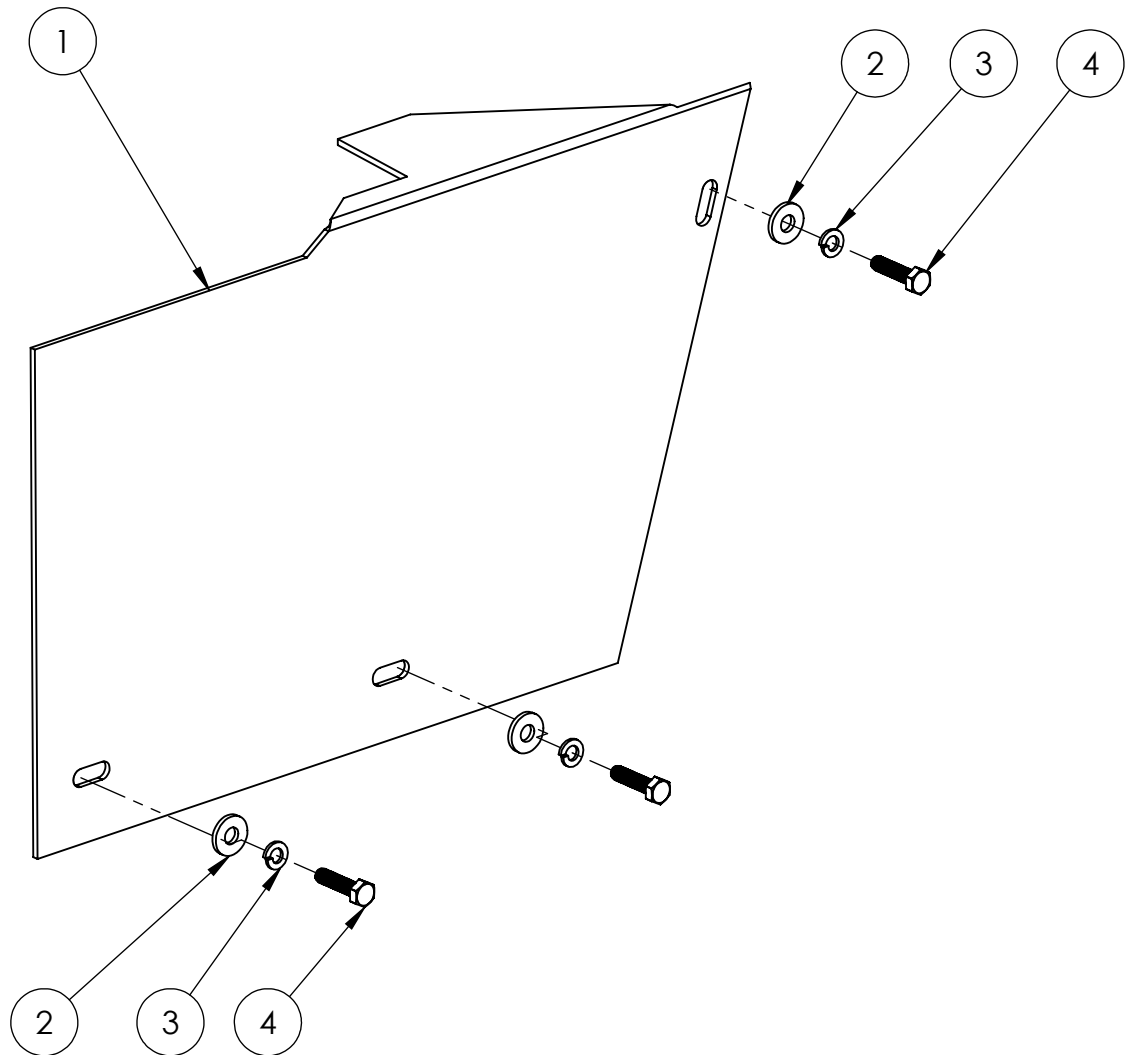
CC-110D-SS



ITEM NO.	PART NUMBER	DESCRIPTION	QTY.
1	2503368	Skid Plate, CC-110D-SS	1
2	2900029	3/8-16 x 1.50 HEX HEAD CAP SCREW	6
3	2900006	3/8 Split Lock Washer	6
4	2903018	USS 3/8" Flat Washer	6

Transmission Guard Assembly

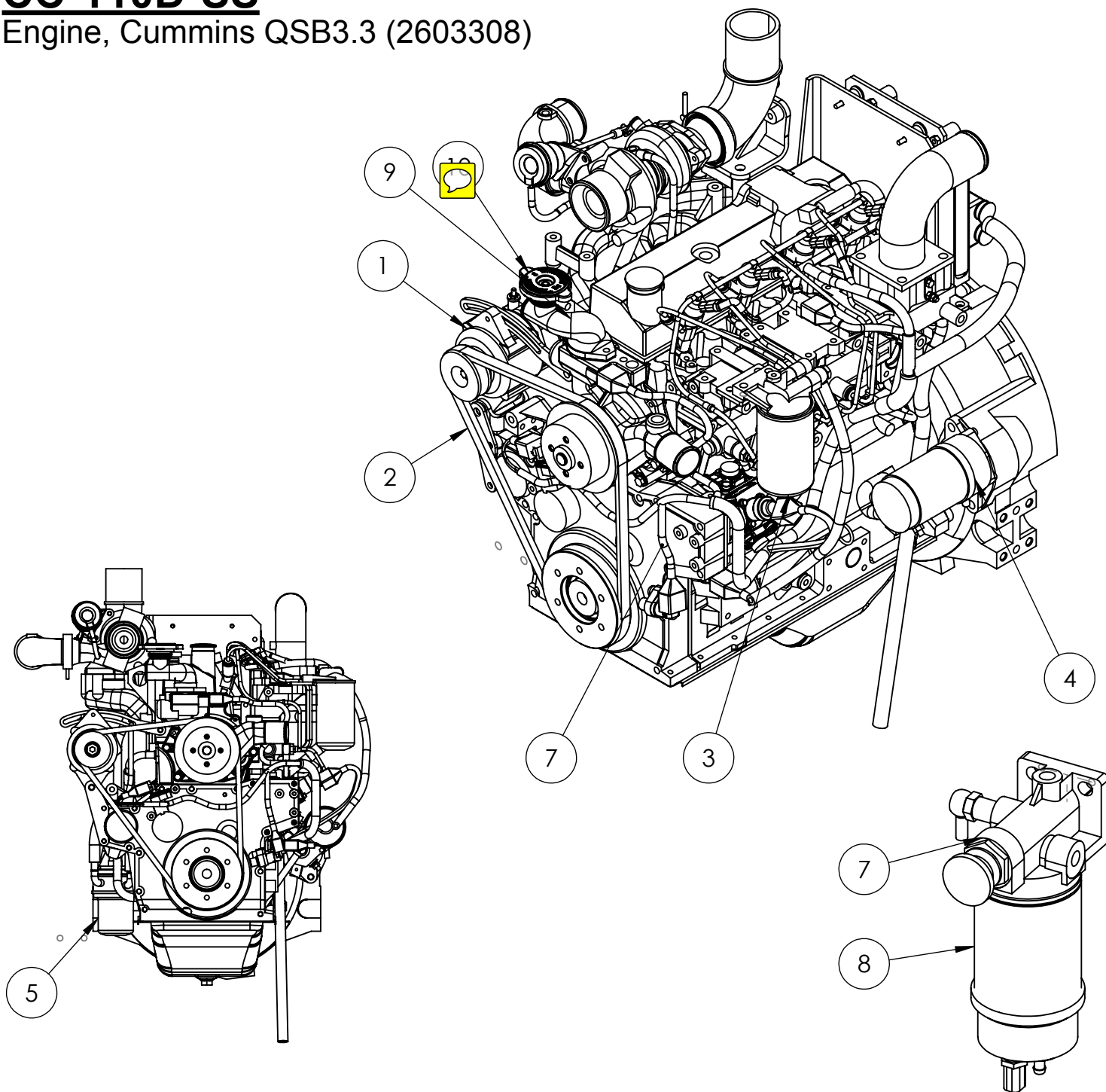
CC-110D-SS



ITEM NO.	PART NUMBER	DESCRIPTION	QTY.
1	6079057	Transmission Belt Guard - Eaton	1
2	2900567	5/16" Flat Washer	3
3	2900031	5/16 SPLIT LOCK WASHER	3
4	2900217	5/16"-18 x 1.25" Hex Cap Screw	3

CC-110D-SS

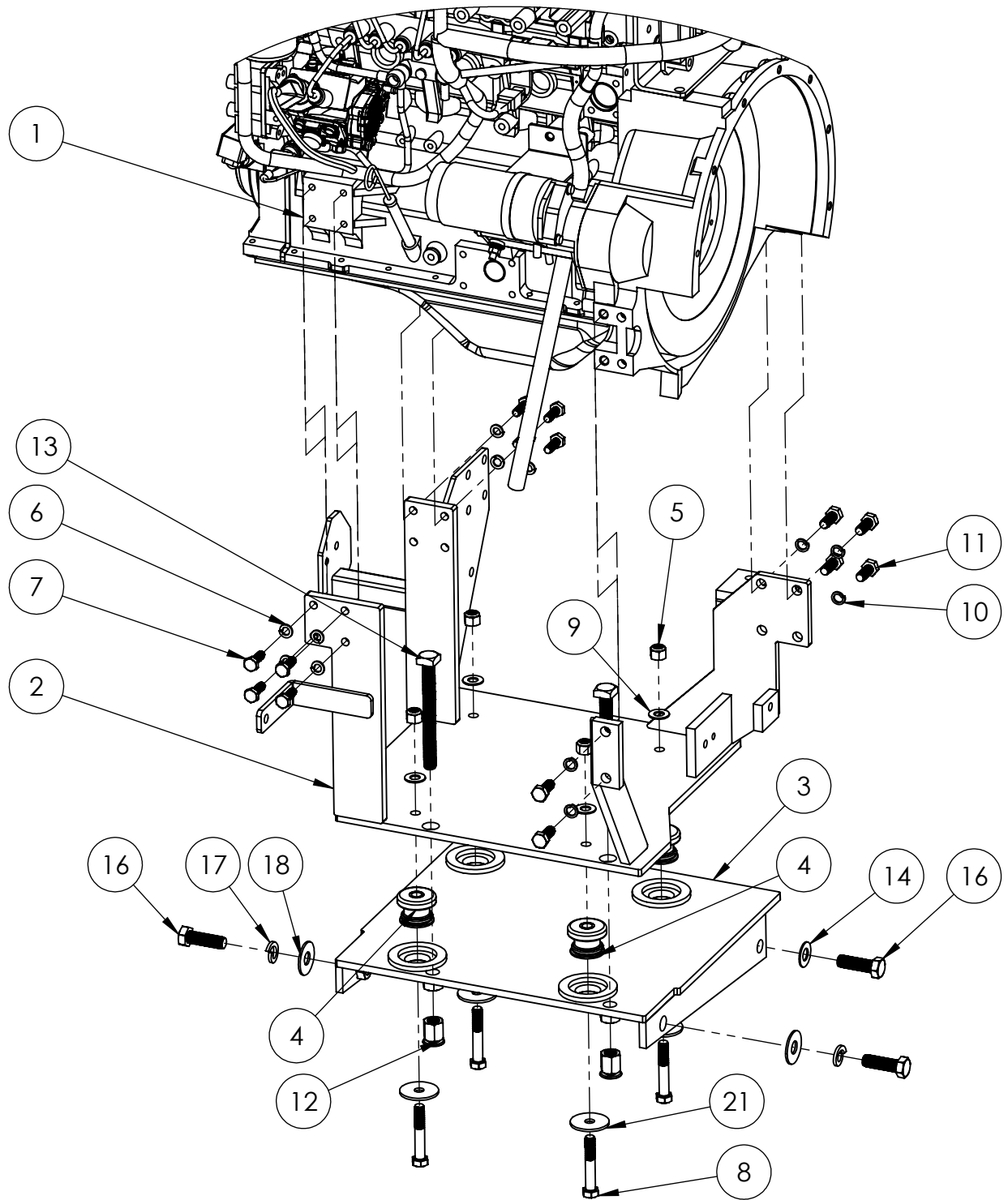
Engine, Cummins QSB3.3 (2603308)



ITEM	PART NO.	QTY.	DESCRIPTION	OEM Number
1	2708115	1	Cummins 110v Alternator	NA
2	2708048	1	Alternator Belt, 25-24476	25-24476
3	2707347	1	Primary Fuel Filter	FF5638
4	2708071	1	Cummins Starter Motor	NA
5	2707346	1	Oil Filter	LF16011
6	2603308	1	Cummins QSB3.3 110hp Turbo Diesel Engine	NA
7	2708043	1	Fuel Primer Assembly	NA
8	2707348	1	Fuel / Water Separator	FS19805
9	6070565	1	Cummins 110hp Water Neck, Modified	NA
10	2502624	1	Radiator Cap, Included In Reservoir Kit	NA

Engine Mount & Pivot Plate

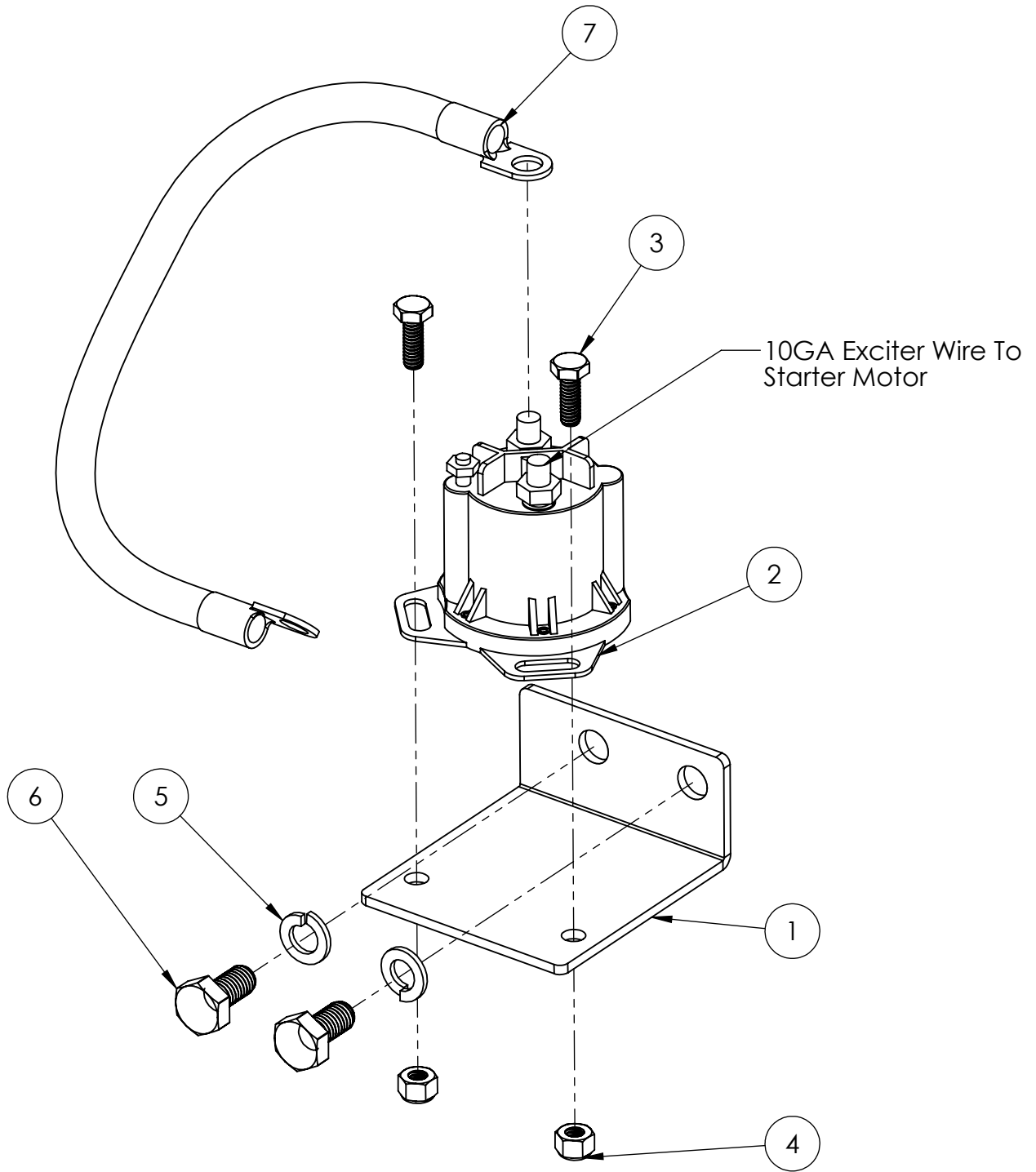
CC-110D-SS



ITEM NO.	PART NUMBER	DESCRIPTION	QTY.	ITEM NO.	PART NUMBER	DESCRIPTION	QTY.
1	2603308	Cummins QSB3.3 110hp Turbo Diesel	1	11	2900330	M10 x 30 HHCS	6
2	6075195	Engine Base, Cummins, CC-110D-SS	1	12	2502640	Swivel Pad, 5/8-11 Threas	2
3	6075196	Engine Pivot Base, CC-110D-SS	1	13	2903121	5/8-11 x 6.00" Square-Head Bolt	2
4	2702621	Rubber Isolator	4	14	2900202	5/8 SAE Flat Washer	4
5	2900026	1/2-13 Nylon-Insert Hex Locknut	4	15	2900135	5/8-11 Nylon Locking Hex Nut	2
6	2900321	M10 SPLIT LOCK WASHER	8	16	2903112	5/8-11 x 2.00" HHCS	4
7	2903169	M10 x1.5 x 30 Hex Head Cap Screw	8	17	2900113	5/8 SPLIT LOCK WASHER	2
8	2900693	1/2-13 x 3.00 Hex Cap Screw	4	18	2900128	5/8 USS Flat Washer	2
9	2900058	1/2 SAE Flat Washer	4	21	2900854	Flat Washer, 1/2" x 2" x 1/8"	4
10	2900699	M12 Split Lock Washer	6				

Starter Solenoid Assembly

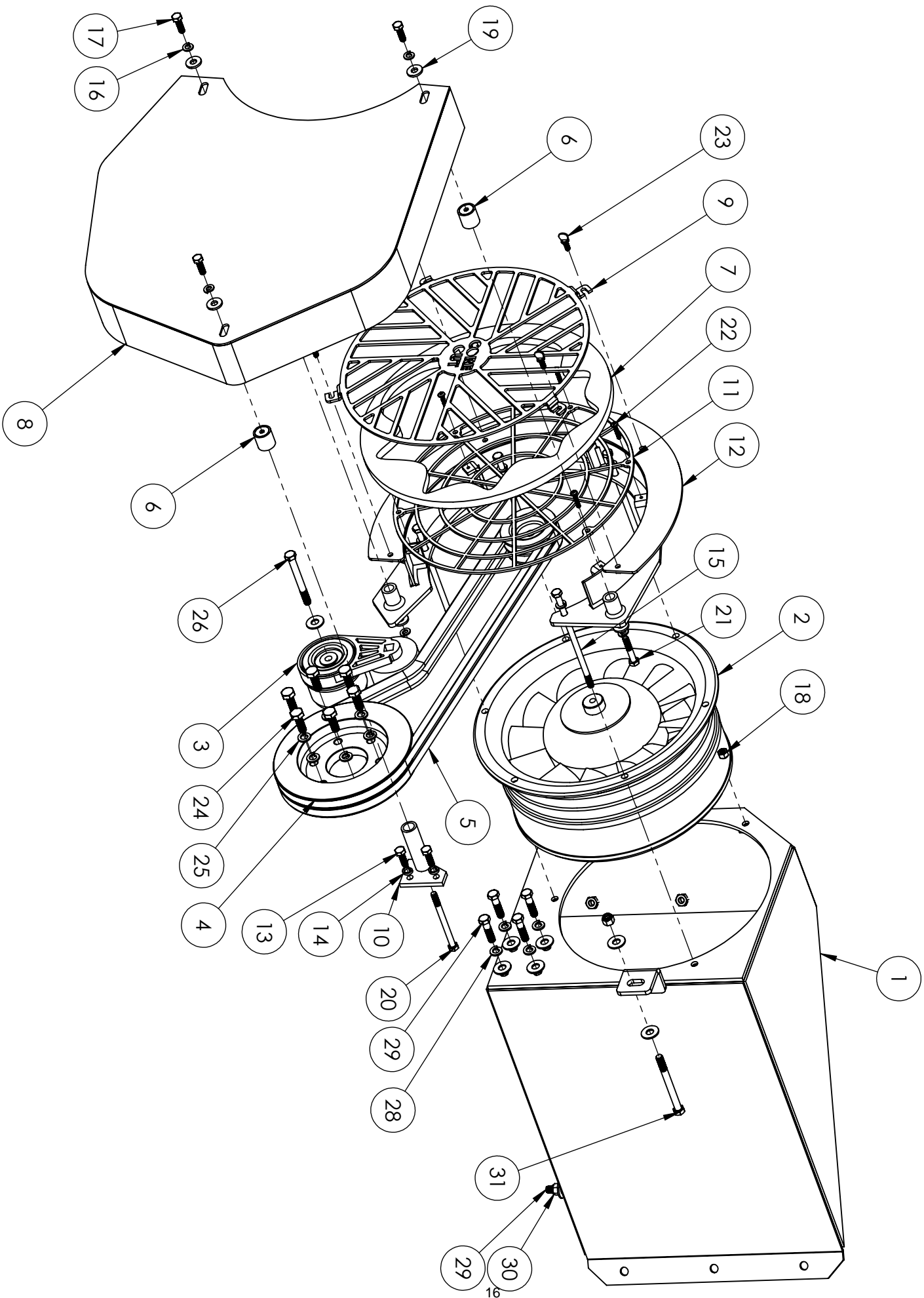
CC-110D-SS



ITEM NO.	PART NUMBER	DESCRIPTION	QTY.
1	6079048	Solenoid Mount Bracket Burnout	1
2	2505056	Solenoid	1
3	2900008	1/4-20 x .750" HHCS	2
4	2900010	1/4-20 Nylon-Insert Hex Locknut	2
5	2900321	M10 SPLIT LOCK WASHER	2
6	2903164	M10-1.5 x 20 HHCS	2
7	6070360	Starter Solenoid Cable, Cummins QSB3.3	1

Fan Assembly

CC-110D-SS



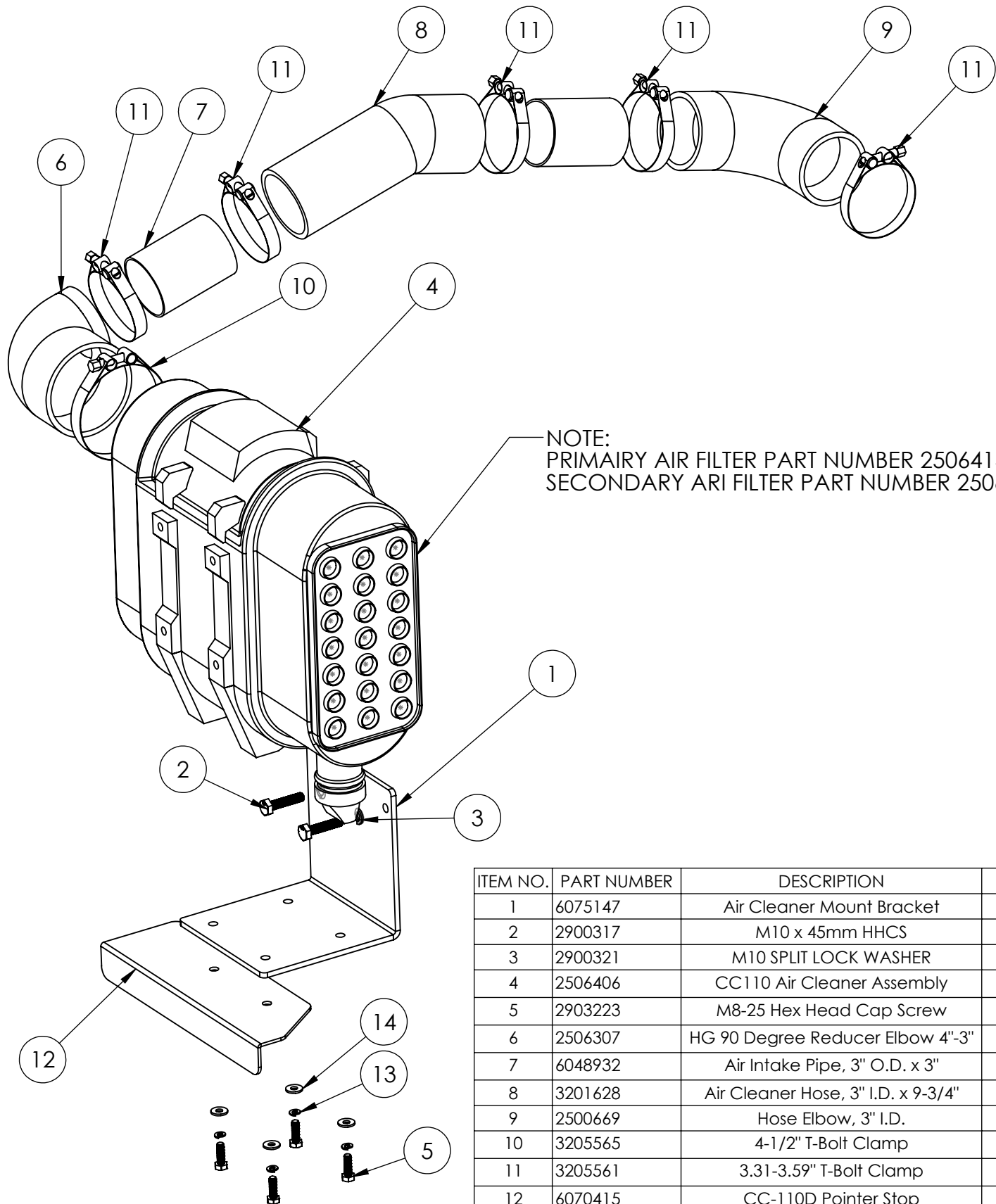
Fan Assembly

CC-110D-SS

ITEM NO.	PART NUMBER	DESCRIPTION	QTY.
1	6075142	Air Box Weldment	1
2	2502625	Axial Turbine Fan Assembly	1
3	2502126	Tensioner K99	1
4	2707226	Pulley, 2-Groove Crankshaft	1
5	2502125	V-Belt 4L560W 56"	2
6	2502641	Vibration Isolator 5/16-18 Thread	3
7	2502780	Air Filter	1
8	6075262	Belt Guard	1
9	6075250	Fan Guard	1
10	6075263	Mount Bracket, Belt Guard	1
11	6075249	Grill Plate	1
12	6075259	Fan Mount Weldment	1
13	2903223	M8-25 Hex Head Cap Screw	2
14	2903041	3/8 Machine Screw Split Lock Washer	2
15	2902971	Cap Screw, Hex Hd., 5/16-18 x 7"	4
16	2900031	5/16 SPLIT LOCK WASHER	10
17	2900138	5/16-18x1.00 HHCS	4
18	2900039	5/16"-18 Nylock Hex Nut	2
19	2900567	5/16" Flat Washer	5
20	2900786	5/16-18 x 4.00 HHCS	1
21	2900538	5/16-18 x 1.75" Hex Head Cap Screw	2
22	2900967	10-24 x 1.00 RHMS	5
23	2907076	Thumb Screw, 1/4-20 x 5/8	4
24	2903169	M10 x1.5 x 30 Hex Head Cap Screw	6
25	2900321	M10 SPLIT LOCK WASHER	6
26	2903028	3/8-16 x 3.50" Hex Head Cap Screw	1
27	2903018	USS 3/8" Flat Washer	10
28	2900006	3/8 Split Lock Washer	4
29	2900029	3/8-16 x 1.50 HHCS	5
30	2900018	Lock Nut, 3/8-16 Nylon	2
31	2900160	3/8-16 x 4.00" Hex Head Cap Screw	1

Air Intake Assembly

CC-110D-SS

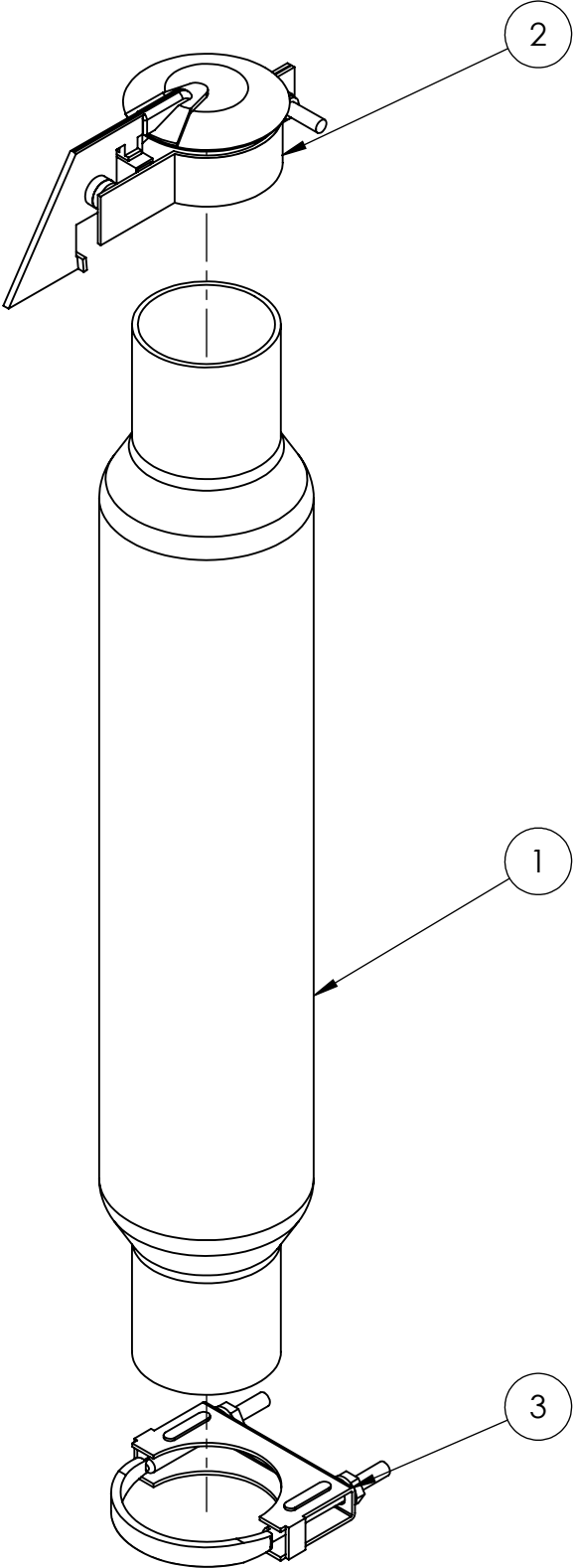


NOTE:
 PRIMARY AIR FILTER PART NUMBER 2506414
 SECONDARY AIR FILTER PART NUMBER 2506415

ITEM NO.	PART NUMBER	DESCRIPTION	QTY.
1	6075147	Air Cleaner Mount Bracket	1
2	2900317	M10 x 45mm HHCS	2
3	2900321	M10 SPLIT LOCK WASHER	2
4	2506406	CC110 Air Cleaner Assembly	1
5	2903223	M8-25 Hex Head Cap Screw	4
6	2506307	HG 90 Degree Reducer Elbow 4"-3"	1
7	6048932	Air Intake Pipe, 3" O.D. x 3"	2
8	3201628	Air Cleaner Hose, 3" I.D. x 9-3/4"	1
9	2500669	Hose Elbow, 3" I.D.	1
10	3205565	4-1/2" T-Bolt Clamp	1
11	3205561	3.31-3.59" T-Bolt Clamp	5
12	6070415	CC-110D Pointer Stop	1
13	2900024	1/4" Split Lock Washer	4
14	2900126	1/4" USS Flat Washer	4

Exhaust Assembly

CC-110D-SS



ITEM NO.	PART NUMBER	DESCRIPTION	QTY.
1	2707327	Muffler, Cummins 110	1
2	2705408	EXHAUST, RAIN CAP, SILENT STYLE, 3"	1
3	3201170	CLAMP, U-BOLT, 3" CHROME	1

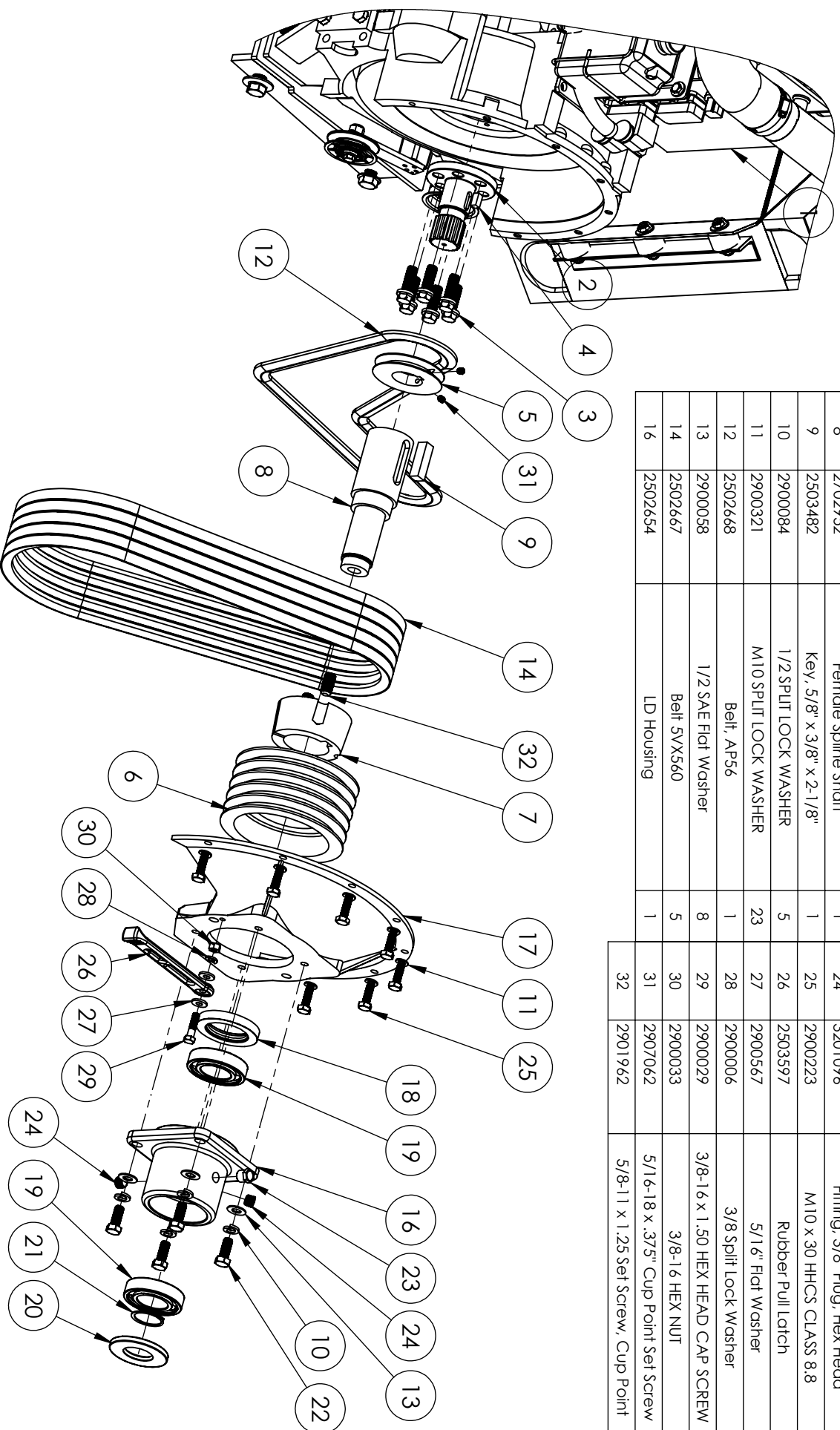
Radiator Assembly

CC-110D-SS

ITEM NO.	PART NUMBER	DESCRIPTION	QTY.
1	2708009	Radiator/CAL Cooler Assembly	1
2	2802760	3CC06 Isolator	6
3	6075198	CAC Adaptor Weldment	1
4	2502542	Gasket, CAC Adaptor	1
5	2707318	Upper Radiator Hose	1
6	3205560	Hose Clamp #48	6
7	2503263	Hose Clamp #36	2
8	2503263	Hose Clamp #36	4
9	2506458	2-1/2" CAC 90 Degree Hose	2
10	6078042	Air Intake Tube	1
11	2707325	Charge Air Hose 2-1/2" Straight	1
12	2707320	Lower Radiator Hose	1
13	2707321	1-3/4" Exhaust Pipe	1
14	2707319	90 Degree Hose	1
15	2503909	Muffler Clamp, 1-3/4"	1
16	6075146	Bracket, Coolant Bottle	1
17	2502624	Coolant Recovery Tank	1
18	2903018	USS 3/8" Flat Washer	18
19	2901988	3/8-16 Nylon Insert Thin Nut	15
20	2900013	3/8-16 X 1.25" HHCS	3
21	2900006	3/8 Split Lock Washer	4
22	2900005	3/8-16x1.00 HHCS	4
23	2900217	5/16"-18 x 1.25" Hex Cap Screw	2
24	2900567	5/16" Flat Washer	8
25	2900039	5/16"-18 Nylock Hex Nut	4
26	2900138	5/16-18x1.00 HEX CAP SCREW	2

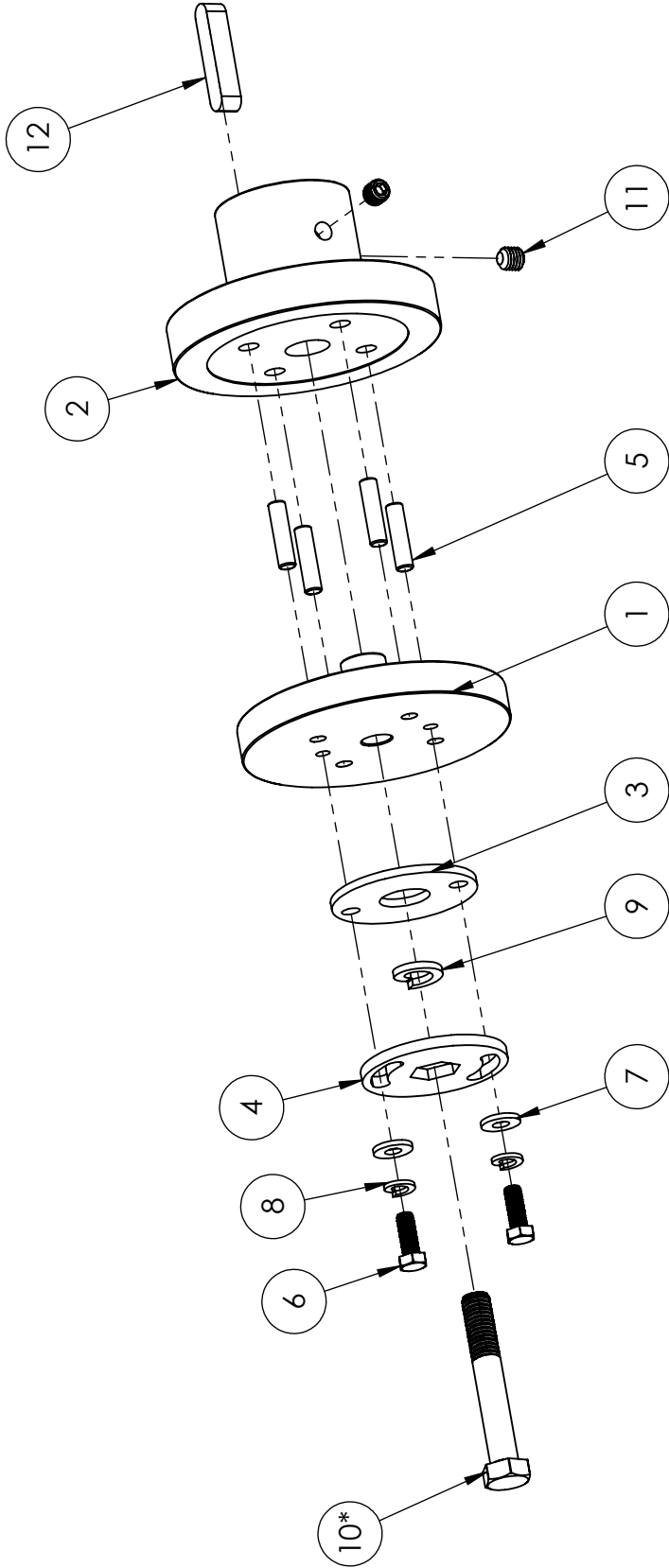
Aux. Drive Assembly CC-110D-SS

ITEM NO.	PART NUMBER	DESCRIPTION	QTY.	ITEM NO.	PART NUMBER	DESCRIPTION	QTY.
1	2603308	Cummins QS83.3 110hp Turbo Diesel	1	17	6070484	SAE #3 Flywheel Housing, Modified	1
2	2707228	Male Spline Shaft	1	18	2502661	Inner Seal, 57-90-13	1
3	2907087	M14-1.5 x 40 DC Flange Head Bolt	6	19	2502662	LD Bearing 62092C3	2
4	6048933	Key, 3/8" Sq. x 3/4" Long	1	20	2502660	Outer Seal, 40-85-8	1
5	6012006	Pulley, Accessory Drive	1	21	2502652	Snop Ring	1
6	2502673	Motor Sheave, 5-Groove 5V	1	22	2900025	1/2-13 x 1.25 HHCS	4
7	2502675	Bushing, 3020 x 2-5/8" Bore	1	23	3201490	Breather Vent, 1/4" NPT	1
8	2702952	Female Spline Shaft	1	24	3201096	Fitting, 3/8" Plug, Hex Head	2
9	2503482	Key, 5/8" x 3/8" x 2-1/8"	1	25	2900223	M10 x 30 HHCS CLASS 8.8	7
10	2900084	1/2 SPLIT LOCK WASHER	5	26	2503597	Rubber Pull Latch	1
11	2900321	M10 SPLIT LOCK WASHER	23	27	2900567	5/16" Flat Washer	5
12	2502668	Belt, AP56	1	28	2900006	3/8 Split Lock Washer	6
13	2900058	1/2 SAE Flat Washer	8	29	2900029	3/8-16 x 1.50 HEX HEAD CAP SCREW	4
14	2502667	Belt SVX560	5	30	2900033	3/8-16 HEX NUT	1
16	2502654	LD Housing	1	31	2907062	5/16-18 x .375" Cup Point Set Screw	1
				32	2901962	5/8-11 x 1.25 Set Screw, Cup Point	2



Blade Collar Assembly

CC-110D-SS



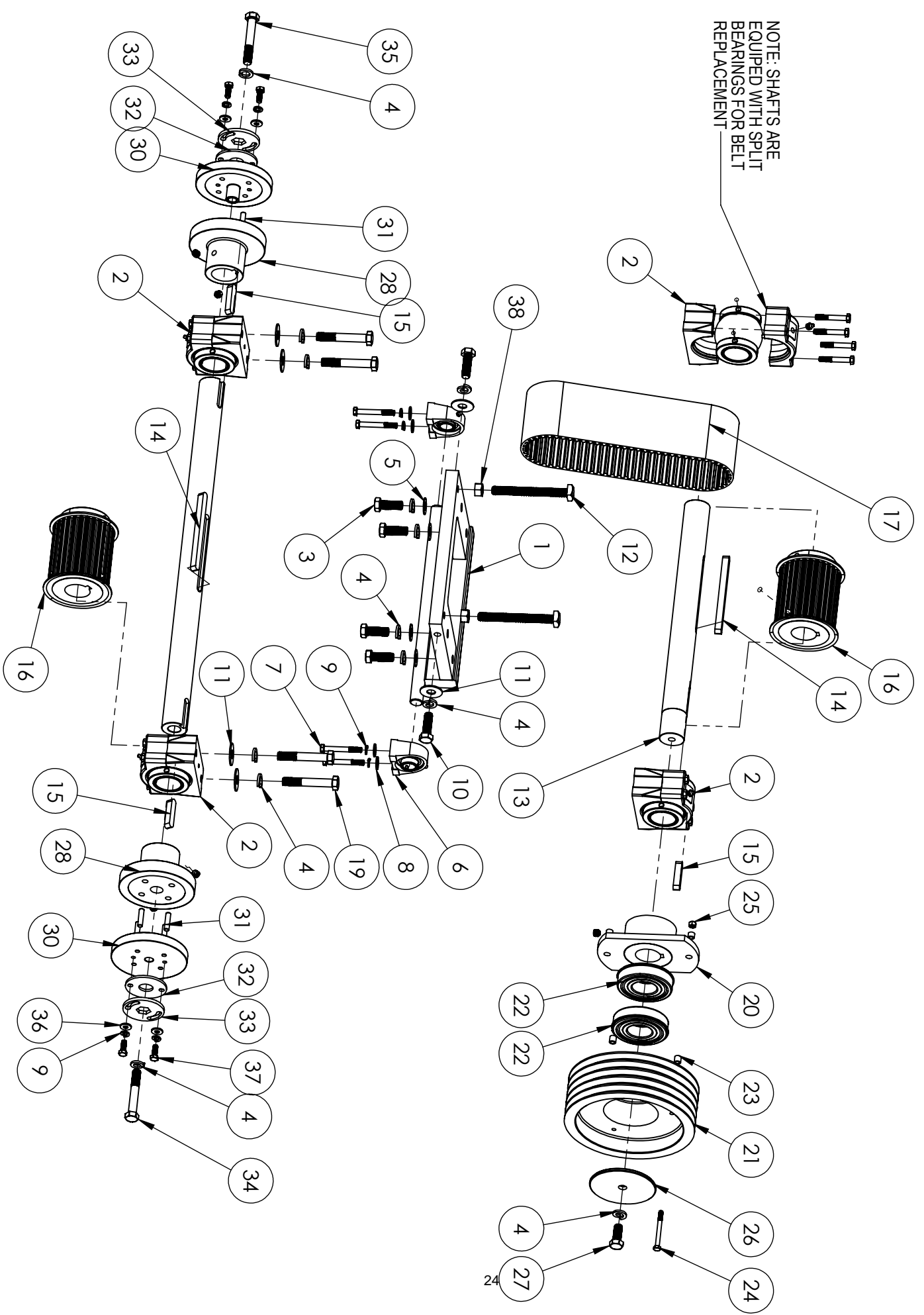
ITEM NO.	PART NUMBER	DESCRIPTION	QTY.
1	2502513	Outer Blade Collar	1
2	2503249	Inner Blade Collar	1
3	6011465	Outer Flange Lock Spacer	1
4	6011464	Outer Flange Lock	1
5	2903155	3/8" x 1.50" Dowel	4
6	2900005	3/8-16x1.00 HHCS	2
7	2900567	5/16" Flat Washer	2
8	2900006	3/8 Split Lock Washer	2
9	2900113	5/8 SPLIT LOCK WASHER	1
10	2900130	5/8-11 x 4.00 GRADE 8 HHCS (LEFT THREAD)	1
11	2907086	1/2-13 x 1/2 Cup Point Set Screw	2
12	2503466	Key, 2.50 x .50 SQ.	1

NOTE: ITEM NO. 10 IS PART NUMBER 2903117 ON LEFT BLADE COLLAR ASSEMBLY (RH)

Blade Shaft & Jack Shaft Assembly

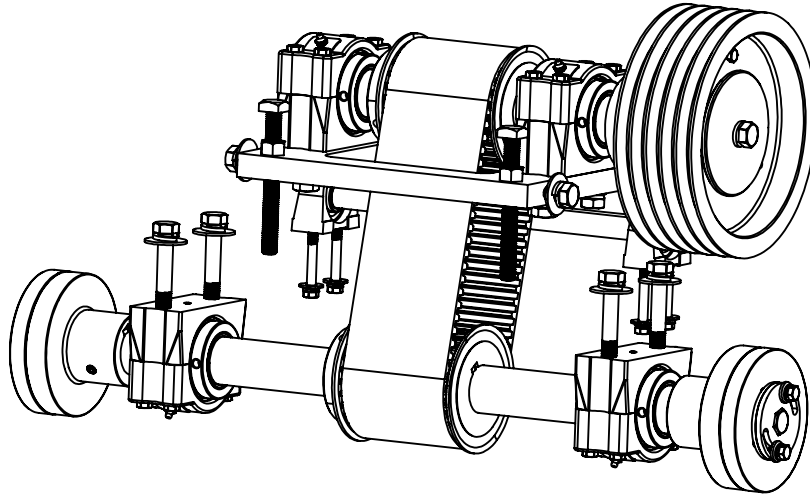
CC-110D-SS

NOTE: SHAFTS ARE
EQUIPPED WITH SPLIT
BEARINGS FOR BELT
REPLACEMENT



Blade Shaft & Jack Shaft Assembly

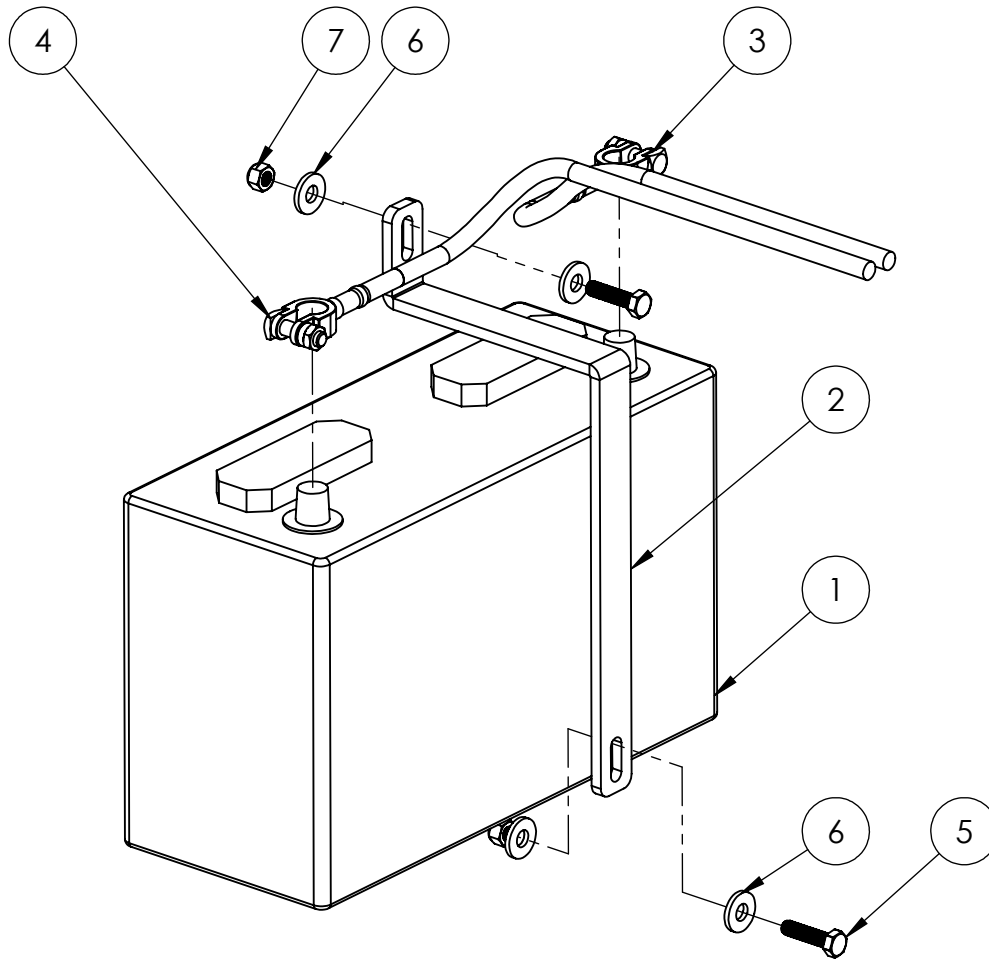
CC-110D-SS



ITEM NO.	PART NUMBER	DESCRIPTION	QTY.
1	6075265	Jackshaft Weldment	1
2	2501624	2.00 Pillow Block Bearing (Split)	4
3	2903124	5/8-18 x 1.75 HHCS (Grade 5)	4
4	2900113	5/8 SPLIT LOCK WASHER	13
5	2900202	5/8 SAE Flat Washer	4
6	2500732	Pillow Block Bearing 1"	2
7	2900035	3/8-16 x 3.00" HHCS (Grade 5)	4
8	2903018	USS 3/8" Flat Washer	4
9	2900006	3/8 Split Lock Washer	8
10	2903112	5/8-11 x 2.00" HHCS	2
11	2900128	5/8 USS Flat Washer	6
12	2903121	5/8-11 x 6.00" Square-Head Bolt	2
13	2503403	Jack Shaft 21-1/4" Long	1
14	2503465	Key, 1/2" Sq. x 7" Long	2
15	2503466	Key, 2.50 x .500 SQ.	3
16	2503288	Sprocket, 32T 14mm Pitch, 2.00 Keyed Bore W/Set Screws	2
17	2502530	Polychain Belt 14GTR-994-125	1
18	2503471	Bladeshaft, 2" x 31-1/2"	1
19	2900130	5/8-11 x 4.00 HHCS (Grade 5)	4
20	2503314	Breakaway Hub Assembly (Weldment)	1
21	6070483	V-Groove Pulley Sheave, Break Away	1
22	2502672	Bearing, 50 x 110 x 27	2
23	2502618	Bushing, 1/2" OD x 1/2" Lg. x 9/32" Hole	3
24	2901002	1/4-20 x 3-1/2" HHCS (Grade 5)	1
25	2900010	1/4-20 Nylock Hex Nut	1
26	2503381	Breakaway Washer	1
27	2903111	5/8-11 x 1.50 HHCS (Grade 5)	1
28	2503249	Inner Blade Collar	2
29	2907086	1/2-13 x 1/2 Cup Point Set Screw	6
30	2502513	Outer Blade Collar	2
31	2903155	3/8" x 1.50" Dowel	8
32	6011465	Outer Flange Lock Spacer	2
33	6011464	Outer Flange Lock	2
34	2903117	5/8-11 x 4.00 GRADE 8 HHCS (RIGHT THREAD)	1
35	2900130	5/8-11 x 4.00 GRADE 8 HHCS (LEFT THREAD)	1
36	2900567	5/16" Flat Washer	4
37	2900005	3/8-16x1.00 HHCS	4
38	2900112	5/8-11 Hex Nut	2

Battery Assembly

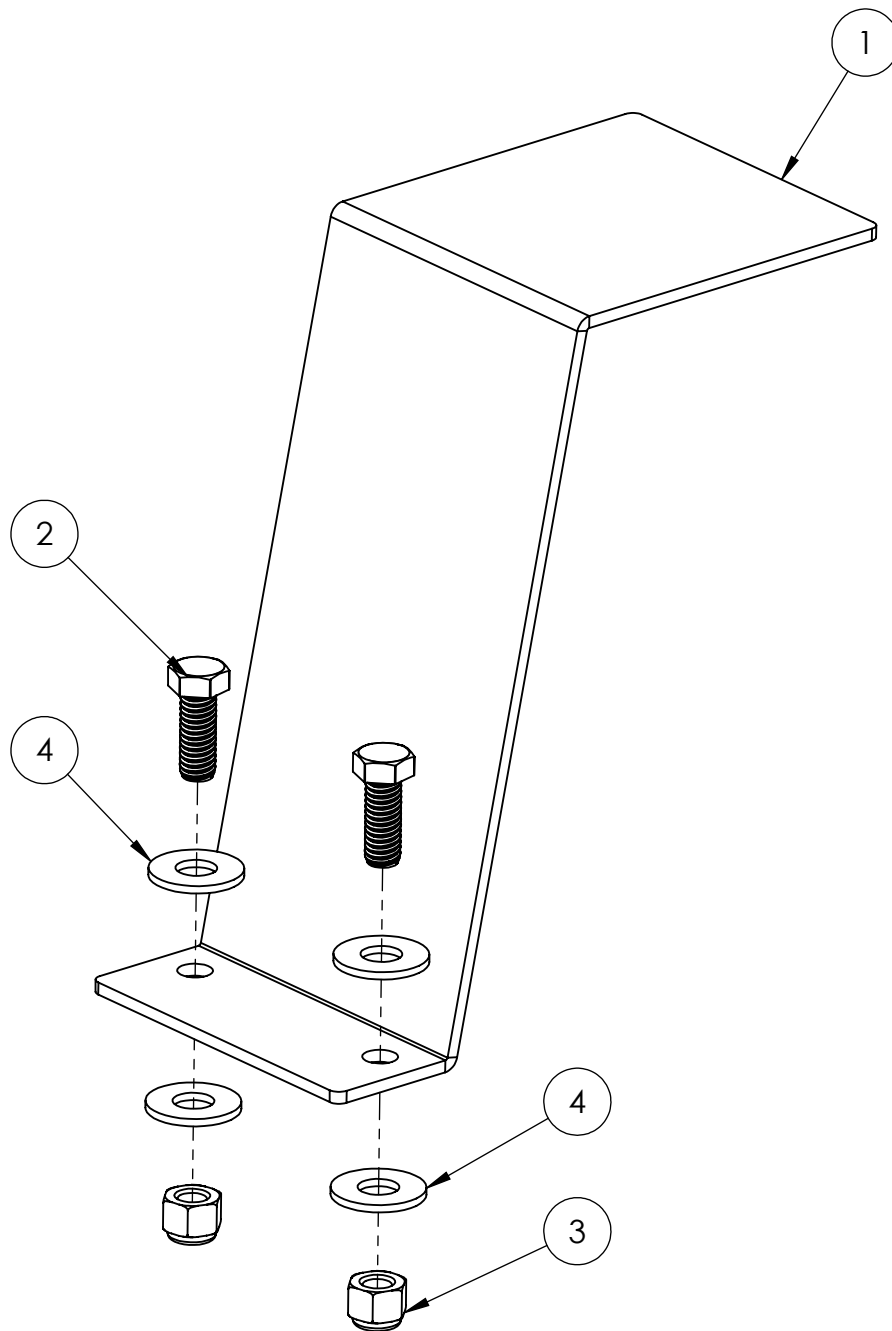
CC-110D-SS



ITEM NO.	PART NUMBER	DESCRIPTION	QTY.
1	2802594	Battery, 12 Volt Group Size 50	1
2	2503372	Battery Hold Down Bracket	1
3	6079007	Negative Battery Cable, CC-110D-SS	1
4	6079008	Positive Battery Cable, CC-110D-SS	1
5	2900217	5/16"-18 x 1.25" Hex Cap Screw	2
6	2900567	5/16" Flat Washer	4
7	2900039	5/16"-18 Nylock Hex Nut	2

Drive Chain Guard Assembly

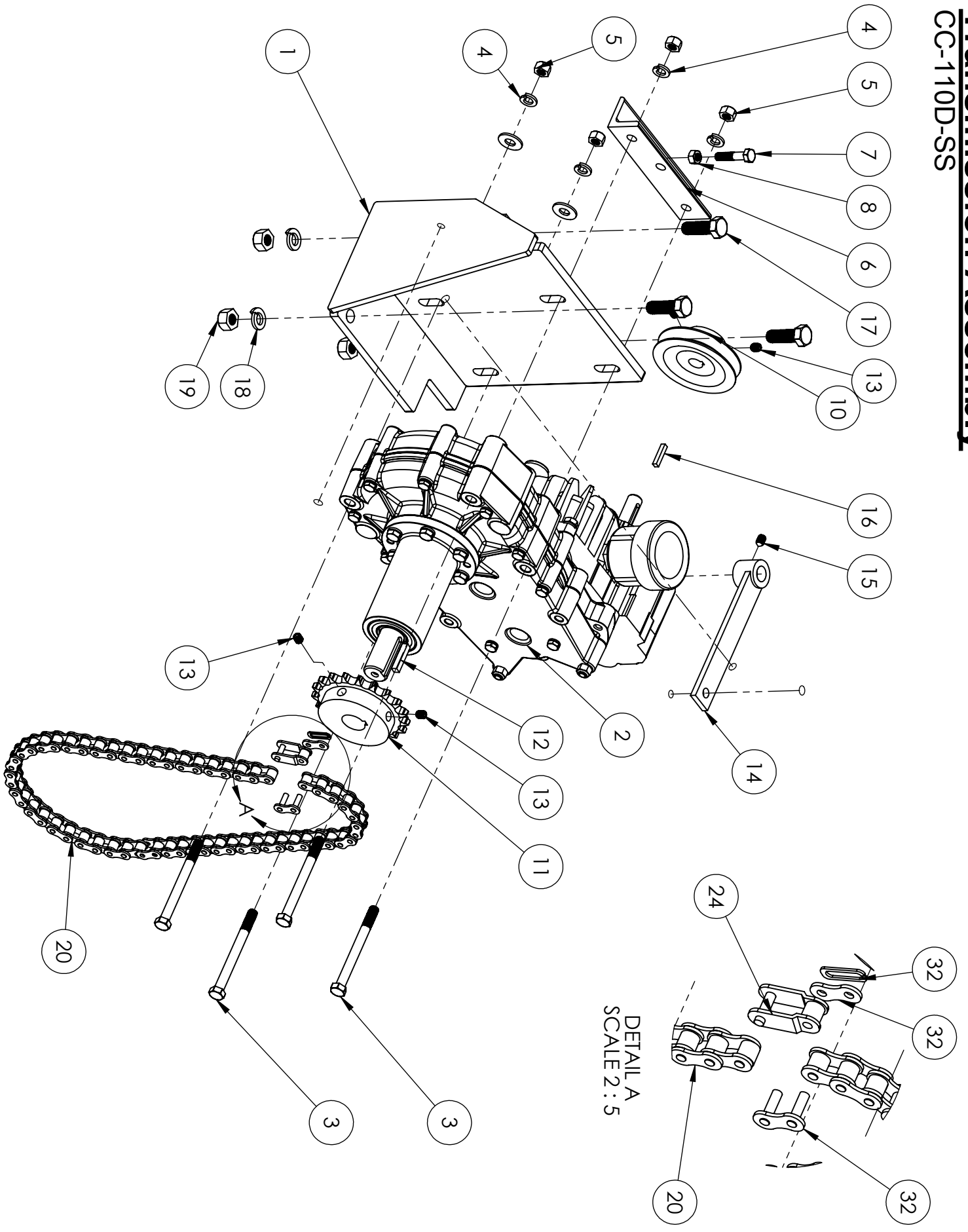
CC-110D-SS



ITEM NO.	PART NUMBER	DESCRIPTION	QTY.
1	2503000	CC-110D Transmission Chain Guard	1
2	2900005	3/8-16x1.00 HHCS	2
3	2900018	Lock Nut, 3/8-16 Nylon	2
4	2903018	USS 3/8" Flat Washer	4

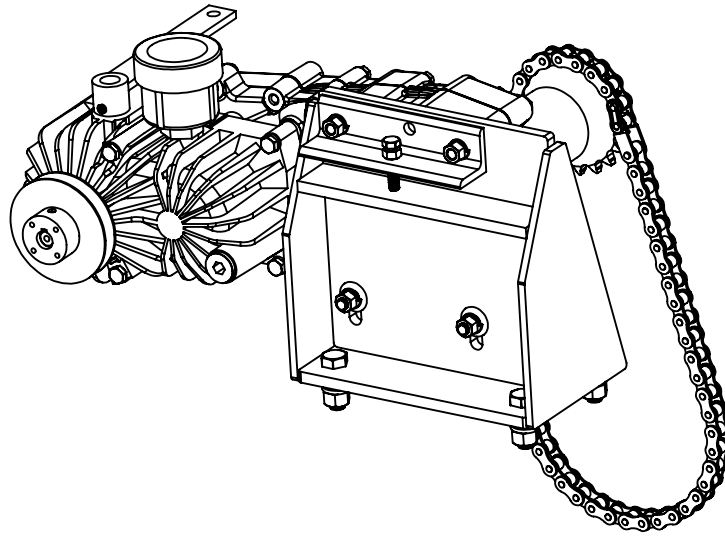
Transmission Assembly

CC-110D-SS



Transmission Assembly

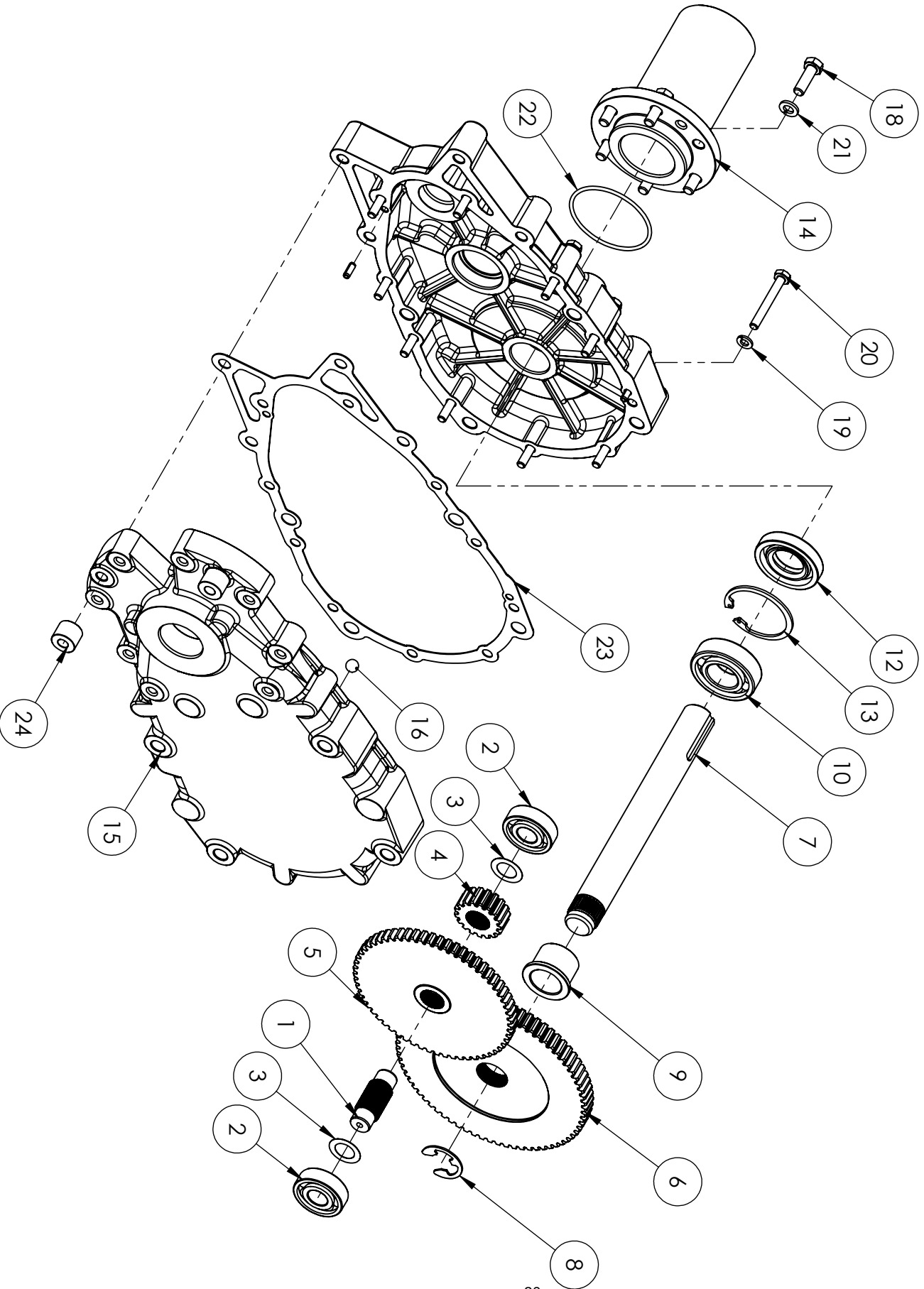
CC-110D-SS



ITEM NO.	PART NUMBER	DESCRIPTION	QTY.
1	2503374	Transmission Mount Bracket (DPI)	1
2	6018235	DPI Transmission	1
3	2900160	3/8-16 x 4.00" Hex Head Cap Screw	4
4	2900006	3/8 Split Lock Washer	4
5	2900033	3/8-16 HEX NUT	4
6	6010120	Chain Tensioning Bracket	1
7	2900508	5/16-18 x 1.50" Hex Head Cap Screw	1
8	2900141	5/16-18 MEDIUM DUTY HEX NUT	1
9	2903018	USS 3/8" Flat Washer	2
10	6011037	Transmission Pulley 3.5"	1
11	6010127	Transmission Sprocket, #50 x 19 Tooth	1
12	6010169	Key, 1/4" Sq. x 1-1/4"	1
13	2907062	5/16-18 x .375" Cup Point Set Screw	4
14	6010129	Shift Lever	1
15	2900429	5/16-18 x .500" Cone Point Set Screw	1
16	6010170	Key, 3/16" Sq. x 1"	1
17	2900499	1/2-13x1.50 HEX CAP SCREW	3
18	2900084	1/2 SPLIT LOCK WASHER	3
19	2900037	1/2-13 Hex Nut	3
20	6078996	CC-110-SS Chain	1
24	2503357	#50 Chain Half Link	1
25	2502665	#50 Chain Master Link	1

Hydrostatic Transaxle Gearbox (6018265)

CC-110D-SS



Hydrostatic Transaxle Gearbox (6018265)

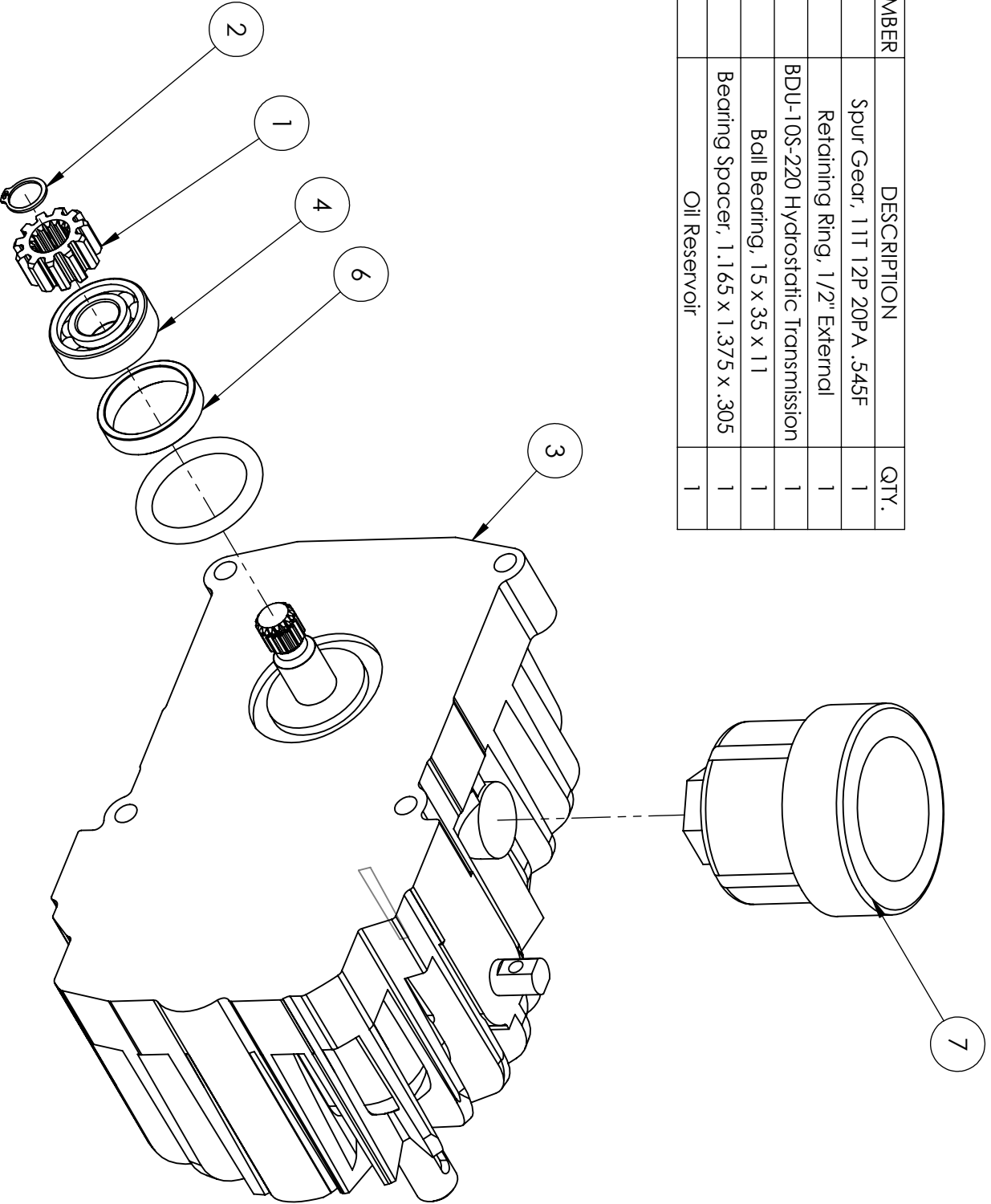
CC-110D-SS

ITEM NO.	PART NUMBER	DESCRIPTION	QTY.
1	6018234	Intermediate Shaft	1
2	2503199	Ball Bearing, .625" x 40 x 12mm	2
3	2503198	Shim, .625 x 1.00 x .010	2
4	6018236	Spur Gear, 17T 12P 20PA .645F	1
5	6018238	Spur Gear, 60T 12P 20PA .405F	1
6	6018240	Spur Gear, 72T 12P 20PA .562F	1
7	6018239	Output Shaft	1
8	2503974	Ret. Ring, 7/8 Ext E-Type	1
9	2503973	Flange Bearing, 25mm x 1.25 x 1.00"	1
10	2400081	Bearing 25 x 52x 15 Ball, 6205-2RS Sealed	1
11	2900171	Roll Pin, 3/16" x 1/2"	2
12	2503978	Seal, 25 x 52 x 10mm	1
13	2503979	Ret. Ring, 2-1/16 INT, N5000-206	1
14	6018244	Axle Horn	1
15	6018245	Inner Cover	1
16	2507085	Ball, 3/8"	1
17	6018246	Outer Cover	1
18	2900138	Cap Screw, Hex Hd., 5/16-18 x 1"	6
19	2900024	Lock Washer, 1/4" Split	10
20	2900294	Cap Screw, Hex Hd., 1/4-20 x 2"	10
21	2900031	Lock Washer, 5/16" Split	6
22	2503983	O-Ring AS568A-143	1
23	6018247	Gasket	1
24	6018249	Spacer, 5/16 x 3/4 x .585	2
25	2504558	Grease, Lubriplate 176	1

Hydrostatic Transaxle Transmission (2708117)

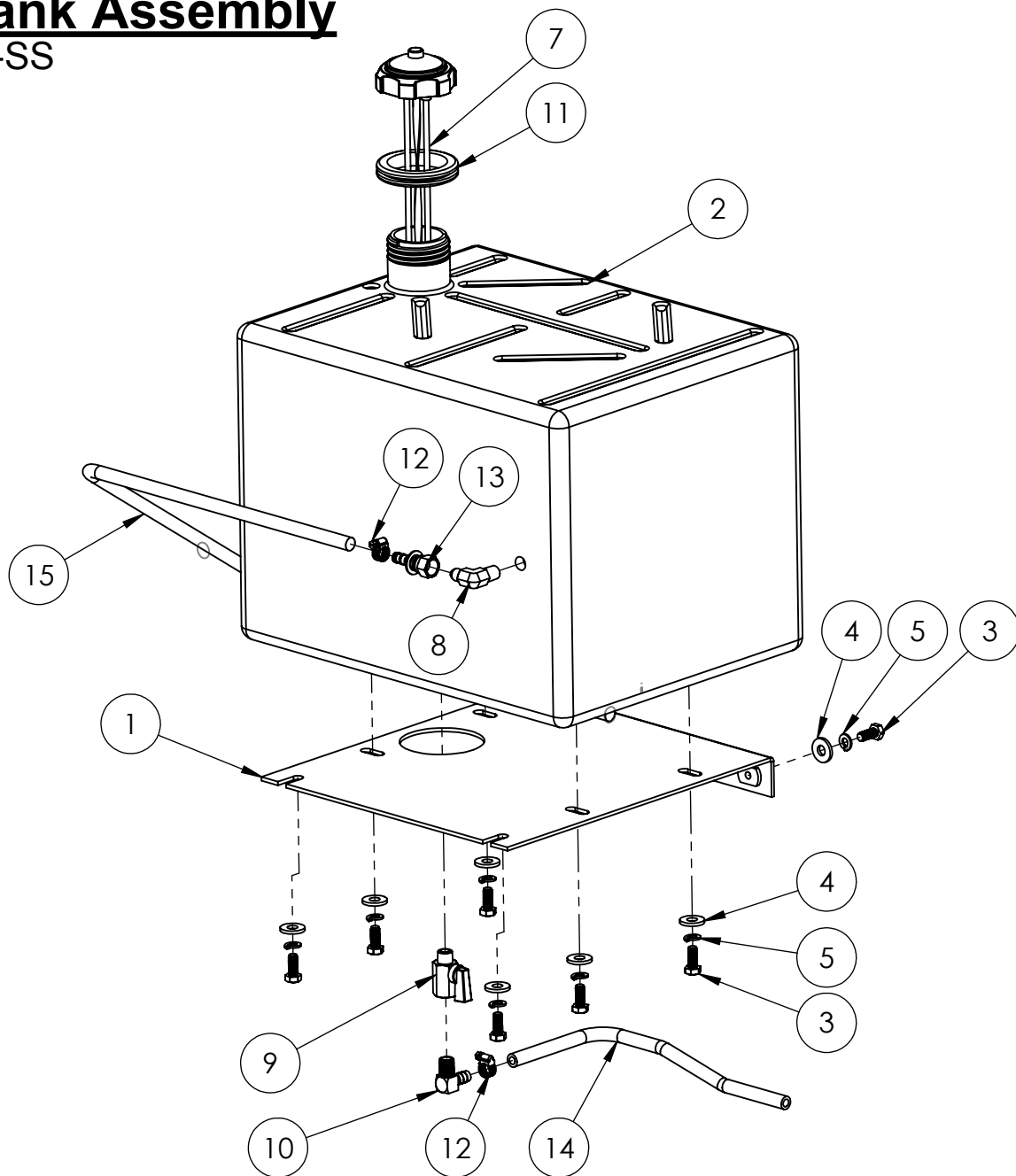
CC-110D-SS

ITEM NO.	PART NUMBER	DESCRIPTION	QTY.
1	6018241	Spur Gear, 11T 12P 20PA .545F	1
2	2400128	Retaining Ring, 1/2" External	1
3	2504557	BDU-10S-220 Hydrostatic Transmission	1
4	2501582	Ball Bearing, 1.5 x 35 x 11	1
6	6018250	Bearing Spacer, 1.165 x 1.375 x .305	1
7	2700357	Oil Reservoir	1



Fuel Tank Assembly

CC-110D-SS



ITEM NO.	PART NUMBER	DESCRIPTION	QTY.
1	6040700	Fuel Tank Mounting Bracket	1
2	2500650	Fuel Tank, 9 Gallon	1
3	2900019	5/16-18x .750" Hex Head Cap Screw	8
4	2900567	5/16" Flat Washer	8
5	2900031	5/16 SPLIT LOCK WASHER	8
7	2504786	Fuel Tank Cap & Gauge	1
8	3200057	Elbow, 1/4" M. Pipe to 1/4" M. JIC	1
9	3200108	Ball Valve, 1/4" NPT	1
10	3200475	Elbow, 1/4" M. Pipe to 3/8" Hose Barb	1
11	2500205	Fuel Tank Grommet	1
12	2503270	Hose Clamp #2	2
13	3205536	Fitting, 1/4" FJIC to 3/8" Push Lock Hose Barb	1
14	2703281	Fuel Suction Line, 3/8" Fuel Line (Sold Per Inch)	48
15	2703281	Fuel Return Line, 3/8" Fuel Line (Sold Per Inch)	80

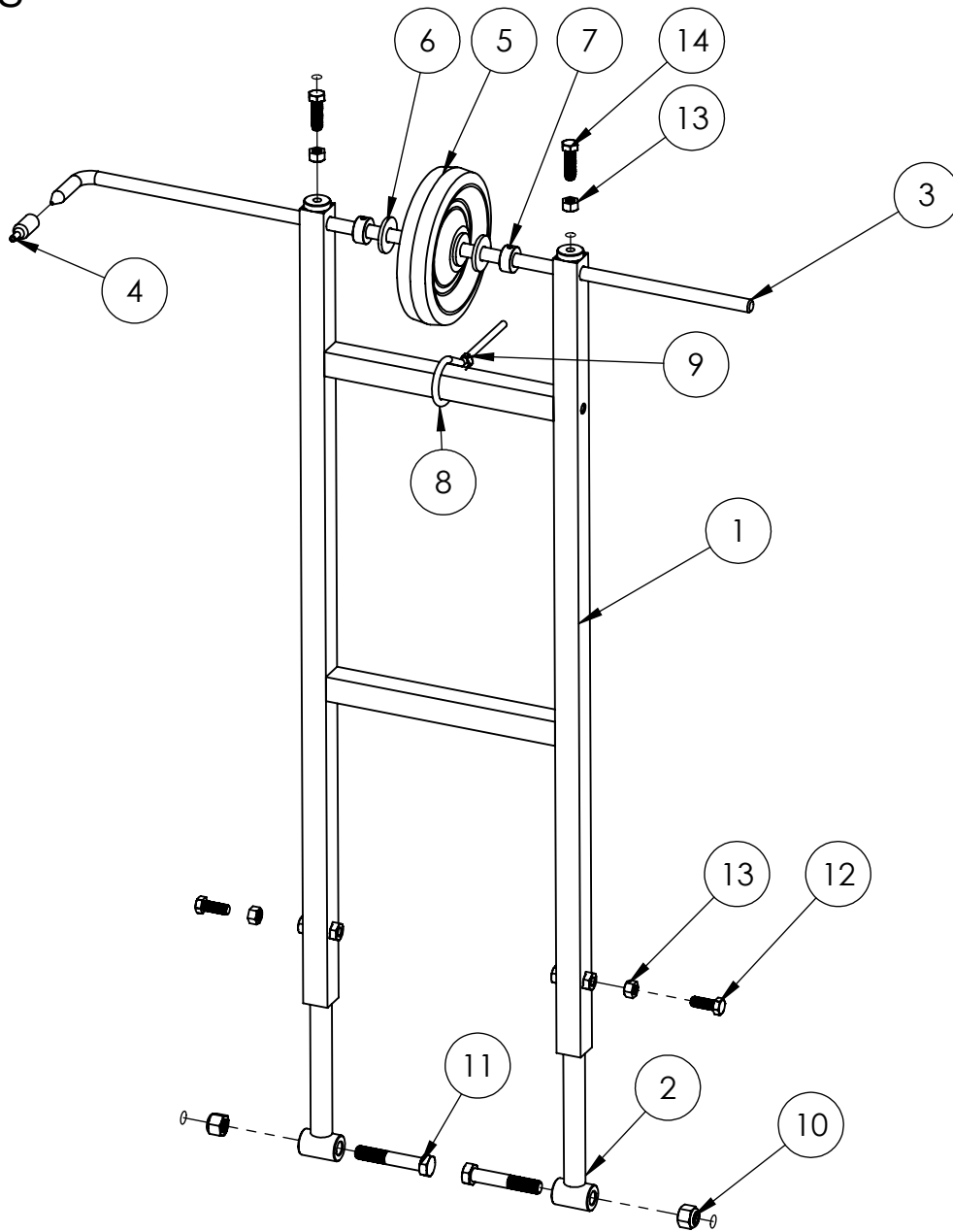
Rear Axle & Undercarriage Assembly

CC-110D-SS

ITEM NO.	PART NUMBER	DESCRIPTION	QTY.
1	2500158	Pillow Block Bearing 1-1/4"	4
2	2503514	30.00" Saw Axle Shaft	1
3	6048134	Key .25" x 2.25"	1
4	2500267	Wheel Drive Sprocket, 35 Tooth	1
5	2502644	12" Wheel	2
6	2500874	Trantorque Bushing, 1-1/4"	2
7	2503383	Axle Adjustment Bracket	1
8	2503387	Ungercarriage,CC-110D-SS	1
9	2500178	Hydraulic Cylinder	1
10	2502645	10" Wheel	2
11	2500009	Set Collar, 1" ID	2
12	2501494	Seal, 1-1/4" x 1.979" x 1/4"	4
13	2501628	Bearing L44643	4
14	2702949	1" Spacer	2
15	2501629	Bearing Race L44610	4
16	6010119	Cylinder Pin, 1" Dia. x 3-1/2" Long	1
17	6010031	Cylinder Pin, 1" Dia. x 3" Long	1
18	2900064	Hair Pin Cotter, 3/4"	4
19	2900693	1/2-13 x 3.00 Hex Cap Screw	6
20	2900084	1/2 SPLIT LOCK WASHER	8
21	2903217	1/2-13 x 3.25" Hex Head Cap Screw	2
22	2900026	1/2"-13 Jam Nut	1
23	2903099	1/2-13 x 5.00" Fully Threaded Hex Head Cap Screw	1
24	3200727	1/4" NPT Breather	1
25	3200057	Elbow, 1/4" M. Pipe to 1/4" M. JIC	1
26	2900062	Grease Fitting, 1/8" NPT	1
27	2502658	Lift Pump	1
28	3200605	Fitting, 3/8" O-Ring to 1/4" F. Pipe	1
29	3200604	Elbow, 1/4" Male Pipe	1
30	2502657	1/4" Flow Control	1
31	3200967	1/4" MPT X 1/4" MJIC	1
32	3200597	Hydraulic Hose, 04-04FJ-04FJ-19.00"	1
33	2900013	3/8-16 X 1.25" HHCS	2
34	2903018	USS 3/8" Flat Washer	2
35	2900006	3/8 Split Lock Washer	2
36	6070572	Lift Pump Ground	1
37	6070573	Power Supply, Lift Pump	1

Front Pointer Assembly

CC-110D-SS

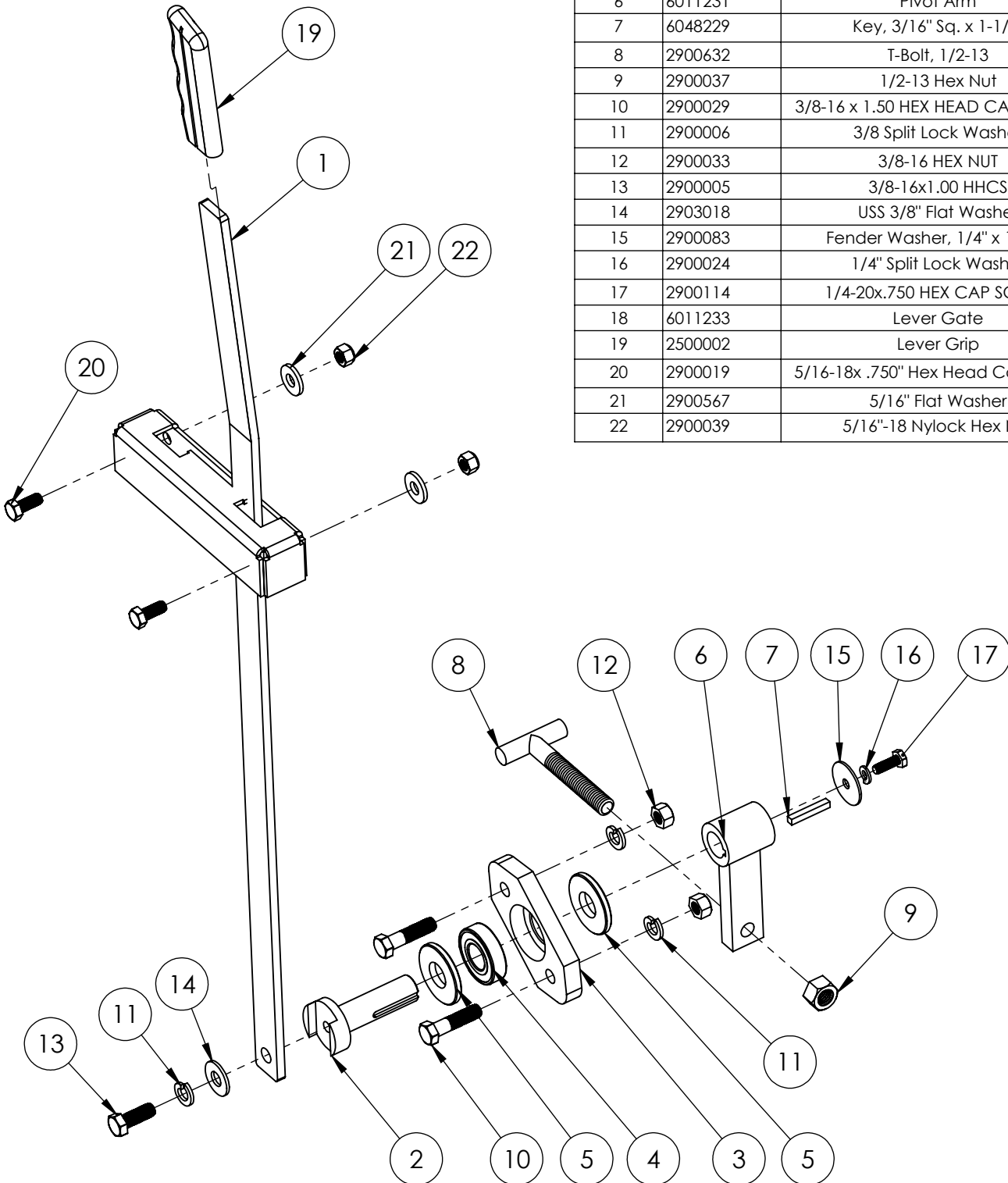


ITEM NO.	PART NUMBER	DESCRIPTION	QTY.
1	6010541	Front Pointer Frame	1
2	6011152	Front Pointer Arm	2
3	6013025	Front Pointer Rod	1
4	2500740	Pointer Cap	1
5	2501409	Wheel, 6"	1
6	2900127	1/2" USS Flat Washer	2
7	2500007	Set Collar, 1/2" with Set Screw	2
8	6017241	Pointer Rope 11 Foot	1
9	3200221	Pinch Clamp, Two Ear	2
10	2900026	1/2-13 Nylon-Insert Hex Locknut	2
11	2900105	1/2-13 x 2.75 Grade 8 HHCS	2
12	2900005	3/8-16x1.00 HHCS	2
13	2900033	3/8-16 HEX NUT	4
14	2900013	3/8-16 X 1.25" HHCS	2

Parking Brake Assembly

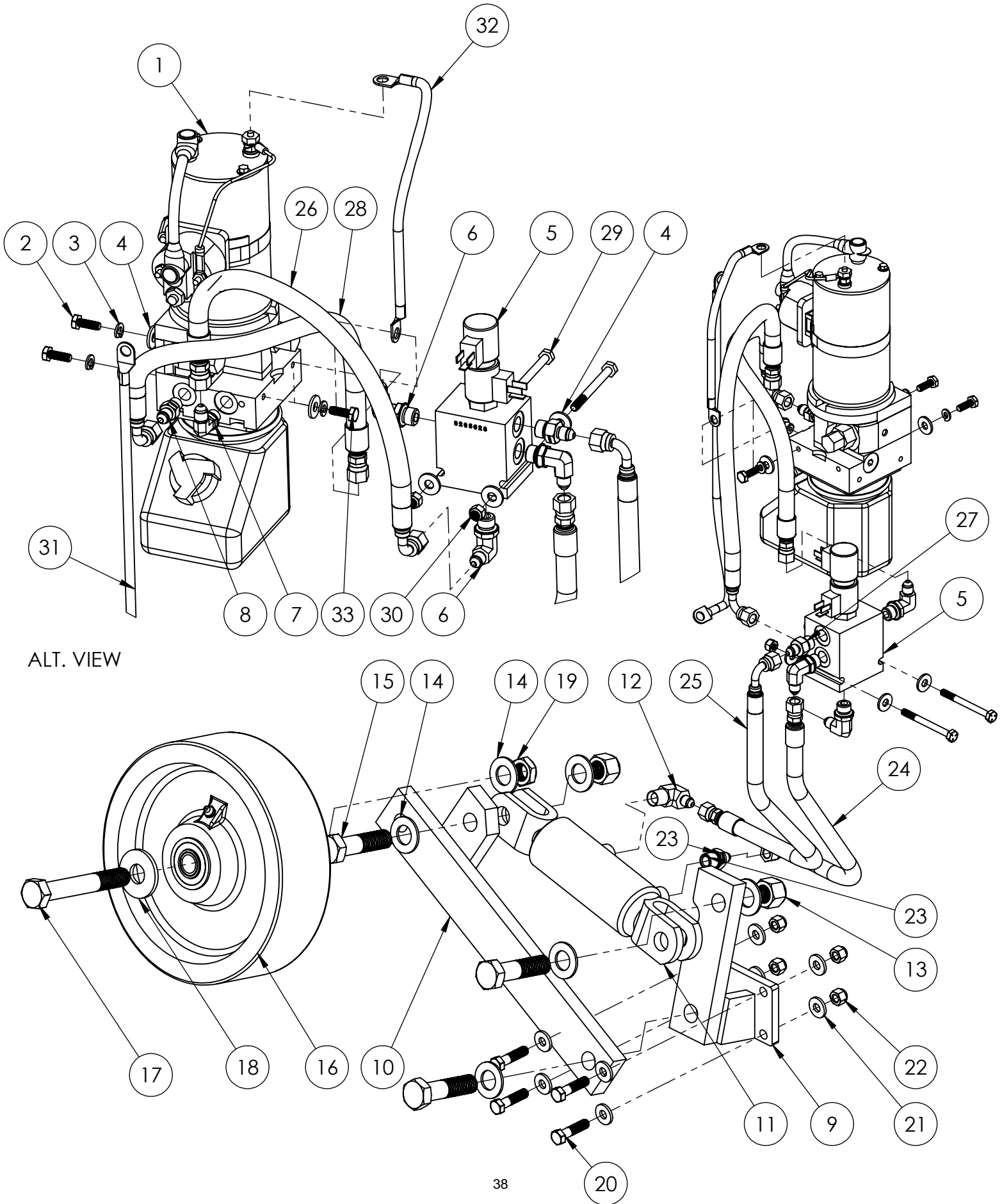
CC-110D-SS

ITEM NO.	PART NUMBER	DESCRIPTION	QTY.
1	6011232	Brake Lever	1
2	6011230	Pivot Pin	1
3	2502274	Bearing Housing Bar	1
4	2501664	Ball Bearing, 3/4" x 1-5/8" x 7/16"	1
5	2907067	Friction Disc, 3/4" x 2-1/2" x 3/16"	2
6	6011231	Pivot Arm	1
7	6048229	Key, 3/16" Sq. x 1-1/4"	1
8	2900632	T-Bolt, 1/2-13	1
9	2900037	1/2-13 Hex Nut	1
10	2900029	3/8-16 x 1.50 HEX HEAD CAP SCREW	2
11	2900006	3/8 Split Lock Washer	3
12	2900033	3/8-16 HEX NUT	2
13	2900005	3/8-16x1.00 HHCS	1
14	2903018	USS 3/8" Flat Washer	1
15	2900083	Fender Washer, 1/4" x 1-1/4"	1
16	2900024	1/4" Split Lock Washer	1
17	2900114	1/4-20x.750 HEX CAP SCREW	1
18	6011233	Lever Gate	1
19	2500002	Lever Grip	1
20	2900019	5/16-18x .750" Hex Head Cap Screw	2
21	2900567	5/16" Flat Washer	2
22	2900039	5/16"-18 Nylock Hex Nut	2



Fifth Wheel & Pump Assembly

CC-110D-SS



ALT. VIEW

Fifth Wheel & Pump Assembly

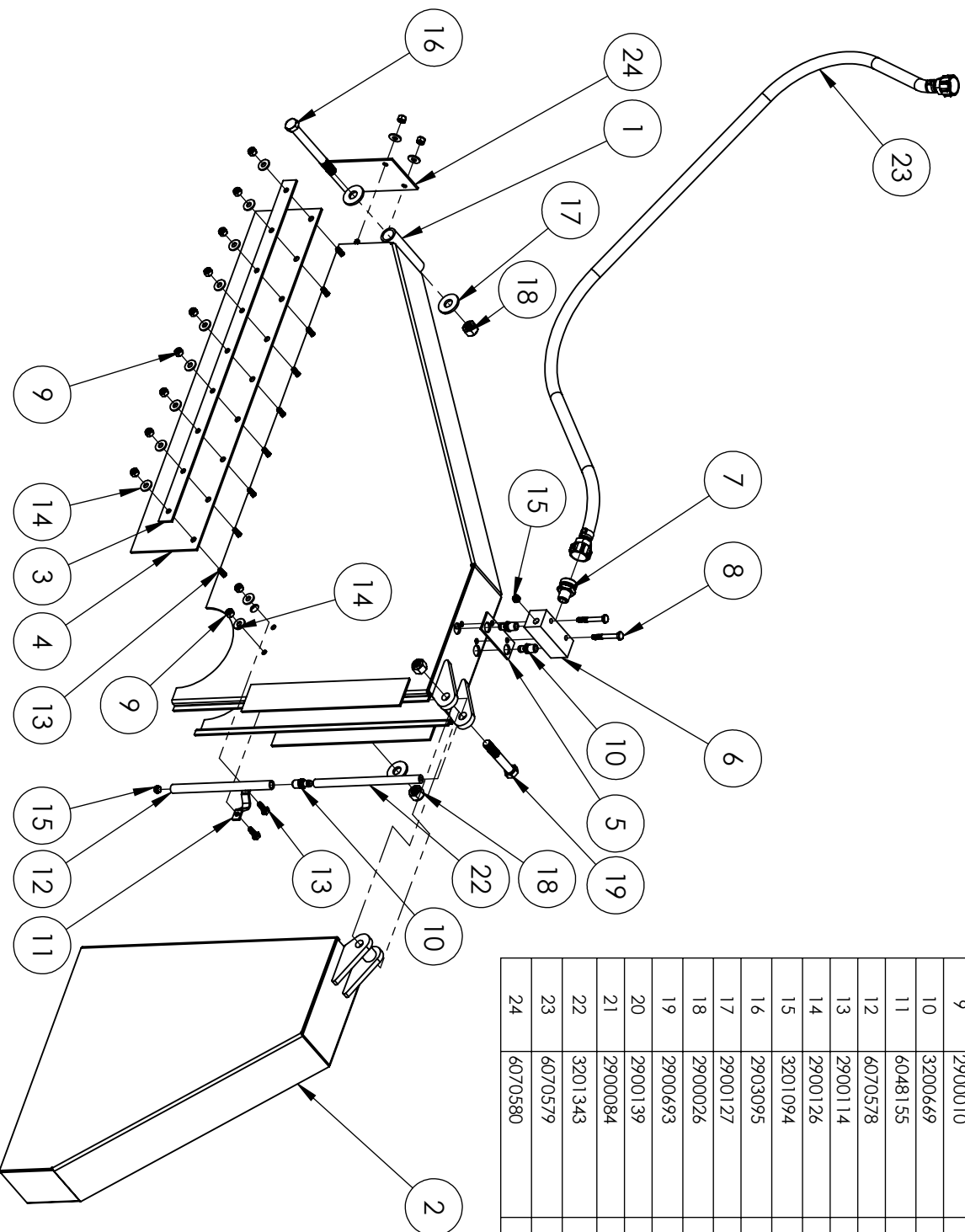
CC-110D-SS

ITEM NO.	PART NUMBER	DESCRIPTION	QTY.
1	2603322	Electro/Hydraulic Pump Unit	1
2	2900008	1/4-20 x .750" HHCS	2
3	2900024	1/4" Split Lock Washer	3
4	2900126	1/4" USS Flat Washer	7
5	3205628	Valve, Fifth Lift Wheel	1
6	3200551	Elbow, 3/8" O-Ring to 1/4" M. JIC	3
7	3200214	Elbow, 1/4" M. O-Ring to 1/4" M. JIC	1
8	3201006	#4 MJIC x #4 M O-Ring	1
9	6075022	Fifth Wheel Mount Bracket	1
10	2503530	DC Bogey Wheel Lever	1
11	2503344	1-1/2 x 6 Double Actuator Cylinder	1
12	3200899	Fitting, 3/8MPT x 1/4 MJIC x 90 Degree	1
13	2900467	3/4-10 Nylon-Insert Hex Locknut	3
14	2900003	3/4" SAE Flat Washer	7
15	2903140	3/4-10 x3.00 HHCS	3
16	2503495	Wheel, 10x3	1
17	2901029	3/4-10 x 5.00" Hex Head Cap Screw	1
18	2903136	3/4" USS Flat Washer	1
19	2900729	3/4-10 Nylon Insert Lock Nut, Thin	1
20	2900029	3/8-16 x 1.50 HEX HEAD CAP SCREW	4
21	2900567	5/16" Flat Washer	8
22	2900018	Lock Nut, 3/8-16 Nylon	4
23	3202116	04 MJIC-06MPT Straight.SLDPRT	1
24	3205737	Hydraulic Hose, 04-04FJ-04FJ90T-16.00"	1
25	3205736	Hydraulic Hose, 04-04FJ-04FJ90T-20.75"	1
26	3205736	Hydraulic Hose, 04-04FJ-04FJ90T-20.75"	1
27	3205657	06 O-Ring - 04 MJIC Straight	1
28	3205737	Hydraulic Hose, 04-04FJ-04FJ90T-16.00"	1
29	2900380	1/4-20 x 2.75 HHCS	2
30	2900010	1/4-20 Nylon-Insert Hex Locknut	2
31	6070570	Fifth Wheel Pump, Power Supply	1
32	6070571	Fifth Wheel Pump Ground	1
33	2900114	1/4-20x.750 HEX CAP SCREW	1

36.00" Blade Guard Assembly (6090372)

CC-110D-SS

ITEM NO.	PART NUMBER	DESCRIPTION	QTY.
1	6070574	36" Blade Guard - Rear Weldment	1
2	6070575	36" Blade Guard - Front	1
3	6070576	36.00" BG Lock Strip	1
4	6070577	36.00" BG Rubber Shield, CC-110D-SS	1
5	2500830	Water Manifold Gasket	1
6	6010264	Water Manifold	1
7	3200596	Fitting, 3/8" MPT to 3/4" F. Garden Hose	1
8	2900294	1/4-20 Hex Head Cap Screw	2
9	2900010	1/4-20 Nylon-Insert Hex Locknut	17
10	3200669	1/4 MPT x 1/4 HOSE BARB	4
11	6048155	Water Tube Clamp	2
12	6070578	Water Tube for Blade Guard	2
13	2900114	1/4-20x.750 HEX CAP SCREW	15
14	2900126	1/4" USS Flat Washer	15
15	3201094	1/8" Solid Hex-Socket Plug	3
16	2903095	1/2-13 x 5.00 Hex Head Cap Screw	1
17	2900127	1/2" USS Flat Washer	4
18	2900026	1/2-13 Nylon-Insert Hex Locknut	3
19	2900693	1/2-13 x 3.00 Hex Cap Screw	1
20	2900139	1/2-13 x 1.75" HHCS	4
21	2900084	1/2 SPLIT LOCK WASHER	1
22	3201343	5/16 Water Tube (Sold Per Inch)	16
23	6070579	Water Hose Assembly, 36.00" Blade Guard	1
24	6070580	36.00" BG Rear Rubber Shield	1



Quick Reference List

Replacement Parts

Description	Use	QTY. Per Saw	Part Number
5V560 Belt	Engine to Jack Shaft	5	2502667
Poly Chain Belt	Jack Shaft to Blade Shaft	1	2502530
V-Belt 4L560W	Engine Cooling Fan	2	2502125
Air Filter	Engine Cooling Fan	1	2502780
Primary Filter	Engine Air Intake Filter (Primary)	1	2506414
Secondary Filter	Engine Air Intake Filter (Secondary)	1	2506415
Primary Fuel Filter	Engine Diesel Fuel Filter	1	2707347
Fuel/Water Separator	Engine Diesel Fuel Water Separator	1	2707348
Oil Filter	Engine Oil Filter	1	2707346
Belt, 25-24476	Alternator Belt	1	2708048
V Belt, 1/2 x 58"	Transmission Belt	1	2502668
Shear Bolt	Jack Shaft Sheave , 1/4-20 x 3 -1/2"	1	2901002
Shear Bolt Fastener	Jack Shaft Sheave , 1/4-20 x 3 -1/2"	1	2900010

Recommended Fluids

Oil Capacity = 8.5 Liters (9 quarts)

- Recommended Oil Type = High Quality SAE 15W-40 Heavy Duty

Coolant Capacity (Engine Only) = 4.5 Liters (4.75 Quarts)

- Recommended Coolant = 50/50 Mix, Cummins Complete ES DCA4 Plus

Fuel Capacity = 9.0 Gallons (34 Liters)

- Recommended Fuel = ASTM 2D Ultra Low Sulfur Diesel Fuel

Maintenance Schedule,

***See accompanying Cummins Operation & Maintenance Manual For Complete Maintenance and Recommendations.**

Daily Check

- Visual Machine Inspection
 - Loose Or Damaged Parts
 - Unusual Noise or Vibration
 - Missing Safety Devices
 - Leaks
- Engine Oil Level
- Engine Coolant Level
- Belt Condition and Tension Including Engine & Aux. Driven Belts
- Cooling Fan Filter / Air Intake Filter
- Drain Water From Fuel/Water Separator
- Lubricate All Grease Points, Including Blade Shaft & Jackshaft Bearings.

250 Hours

- Engine Oil & Filter

500 Hours

- Fuel Filters

1000 Hours

- Engine Drive Belts
- Fuel Lines

2000 Hours

- Drain, Flush Fill Cooling System
- Engine Adjustments

EQUIPMENT AND PARTS WARRANTY

Diamond Products warrants all equipment manufactured by it against defects in workmanship or materials for a period of one (1) year from the date of shipment to Customer.

The responsibility of Diamond Products under this Warranty is limited to replacement or repair of defective parts at Diamond Products' Elyria, Ohio factory, or at a point designated by it, of such parts as shall appear to us upon inspection at such parts, to have been defective in material or workmanship, with expense for transportation and labor borne by Customer.

In no event shall Diamond Products be liable for consequential or incidental damages arising out of the failure of any Product to operate properly.

Integral units such as engines, electric motors, batteries, transmissions, etc., are excluded from this Warranty and are subject to the prime manufacturer's warranty.

THIS WARRANTY IS IN LIEU OF ALL OTHER WARRANTIES, EXPRESSED OR IMPLIED, AND ALL SUCH OTHER WARRANTIES ARE HEREBY DISCLAIMED.



333 Prospect Street, Elyria, Ohio 44035
(440) 323-4616 • (800) 321-5336 • Fax (440) 323-8689
www.diamondproducts.com