

DIAMOND

PRODUCTS

POWER UNIT

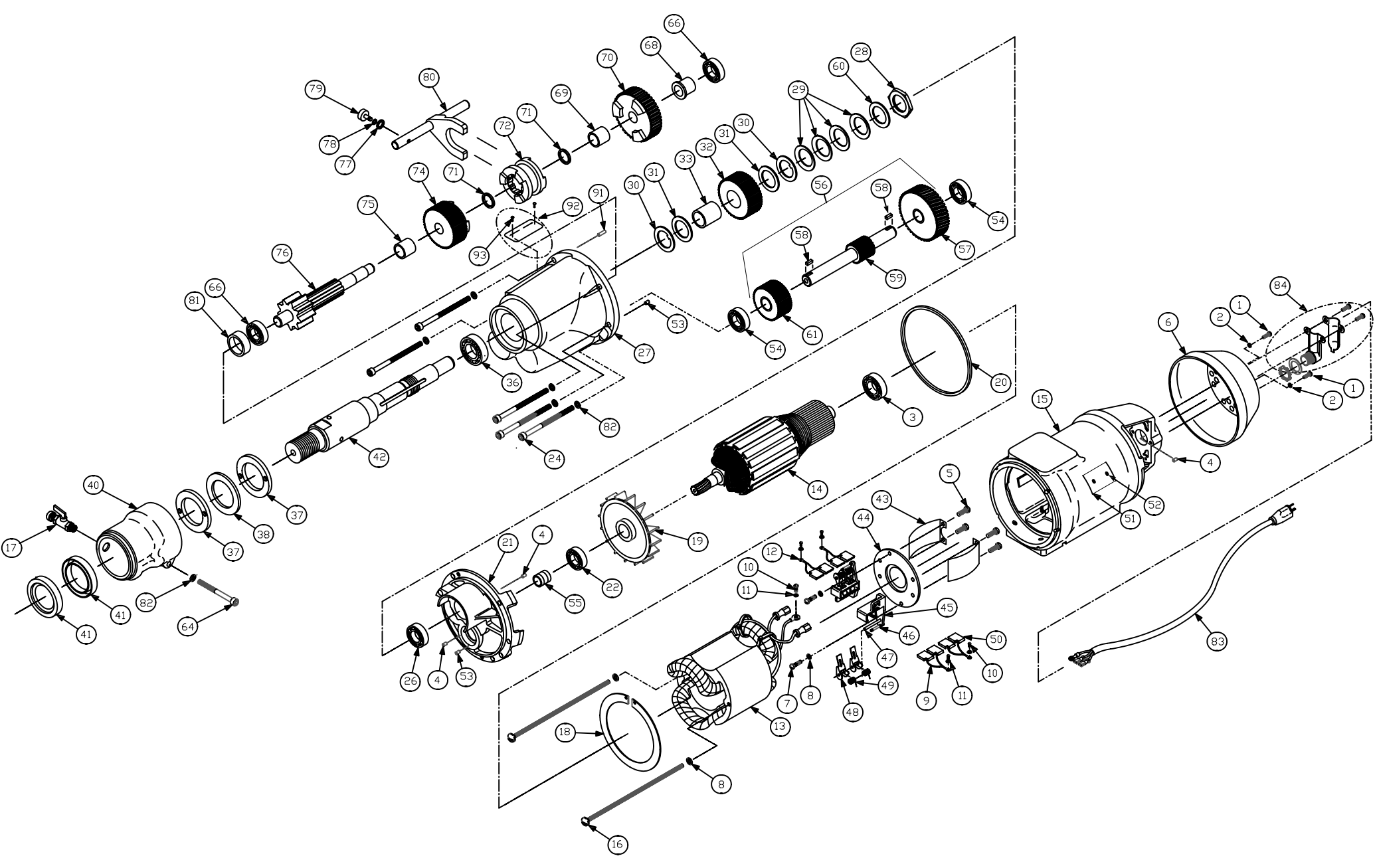
PARTS LIST

MODEL

CB748

SEPT 2005

Part#: 1800896



**CB748 Parts List
Diamond Products**

Diagram Number	Part No.	Qty. Req.	Description	Diagram Number	Part No.	Qty. Req.	Description
1	2700369	2	Screw	56	2700338	1	1st. Intermediate Gear Assy (Inc. #'s 57-59,61)
2	2900024	2	Lock Washer, 1/4"	57	2700305	1	1st. Intermediate Gear
*3	2700117	1	Ball Bearing	58	2700233	2	Key
4	2700280	3	Bearing Plug	59	2700306	1	1st. Intermediate Pinion
5	2700906	4	Screw	60	2700126	1	Washer
6	2700374	1	Top Head	61	2700269	1	1st. Intermediate Pinion Gearwheel
7	2700907	2	Screw, #10-32 x 5/8"	64	2701201	1	Capscrew, Soc Hd., 1/4"-28 x 2-1/4"
8	2900038	2	Lock Washer, #10	66	2700103	2	Ball Bearing
9	2700908	2	Insulator, Sleeve for Brush	*68	2700319	1	Pinion Sleeve
10	2700909	5	Screw, #8-32 x 5/16"	69	2700109	1	Sleeve Bearing (honed i.d. = .5625)
11	2701569	5	Lock Washer, #8	70	2700229	1	2nd Intermediate Gear (Inc. #69)
12	2701271	4	Lead Terminal	71	2700102	2	Spring Ring
13	2700099	1	110V Field	72	2700116	1	Clutch
	2701407	1	220V Field	74	2700270	1	2nd Intermediate Gear (Inc. #75)
14	2700100	1	110V Armature	75	2700308	1	Sleeve Bearing
	2702283	1	220V Armature	76	2700124	1	2nd Intermediate Pinion
15	2700125	1	Field Case	77	2700087	1	Washer
16	2700910	2	Screw, #10-32 x 3/4"	*78	2700088	1	Belleville Washer
17	4699921	1	Water Petcock	79	2700086	1	Locking Screw (Gear Shifting Lever)
18	2700120	1	Fan Baffle	*80	2700089	1	Shift Lever Rod
19	2700108	1	Fan	81	2700303	1	Bearing Sleeve
20	2700111	1	Wear Ring	82	2701382	6	Lock Washer
21	2700112	1	Gear Case Cover	83	2800152	1	Cord
*22	2700119	1	Ball Bearing	84	2800042	1	Cord Relief
24	2700114	5	Screw	91	2700444	1	Dowell Pin (In gear case)
26	2700106	1	Roller Bearing	92	2702095	1	Speed Indicating Plate (On gear case)
27	2700113	1	Gear Case (Includes #81)	93	2701262	2	Screw (Speed indicating plate)
28	2700080	1	Nut				
*29	2700081	4	Cone Lock Washer				
30	2700082	2	Keyed Washer				
31	2700107	2	Thrust Washer				
32	2700268	1	Spindle Gear (Includes #33)				
33	2700463	1	Sleeve Bearing				
36	2700105	1	Ball Bearing				
37	2700325	2	Locking Washer				
38	2700451	1	Spring Washer				
40	2700084	1	Water Jacket Housing				
*41	2700085	2	Seal, Water				
42	2700121	1	Spindle 1-1/4-7 Thread				
43	2700226	2	Brush Insulator				
44	2700234	1	Brush Holder Ring				
45	2700118	2	Brush Holder (Incl. #46,#47)				
N/A	Separate	2	Brush Holder Assy (Incl. 46,47, 48,49)				
46	2700364	1	Spring Retaining Pin				
47	2701387	1	Tension Arm Pin				
48	2700317	4	Brush Tension Arm				
49	2700320	4	Brush Spring				
50	2700110	4	Brush & Lead				
*51	2702093	1	Name Plate				
52	2701262	1	Drive Screw				
53	2700629	2	Bearing Plug				
54	2700104	2	Ball Bearing				
55	2700127	1	Grease Sleeve				

Clutch socket (not shown) part number 2705145

Lubrication: 10oz. (#2501637) high temp. grease in gear case. Coat gears, inside of item 26, and pack all ball bearings.

***Notes:**

3. Assemble seal towards cummutator.
22. Assemble with indent groove towards gear case, away from fan.
28. Torque to 100 ft/lbs, then adjust to allow spindle to slip at 140-150 ft/lbs.
29. Concave side faces keyed washer.
41. Apply a small amount of grease to rubber seals before pressing together.
51. Date code location.
68. Assemble to 2nd intermediate pinion with large diameter towards gear.
78. Assemble with large side against item 77.
80. Apply a light amount of oil before assembling to unit.

IMPORTANT! To assure product **SAFETY** and **RELIABILITY**, repairs, maintenance, and adjustment should be performed by authorized Service Centers and always use genuine replacement parts

2 Speed Super Power Unit				
Model No.	Type	Volts	Amps	RPM
CB748	1	120	20	350/900

EQUIPMENT AND PARTS WARRANTY

Diamond Products warrants all Core Drills for a period of ninety (90) days from the date of purchase.

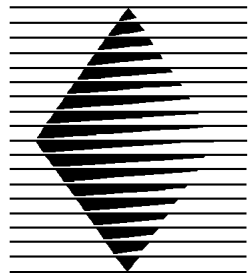
The responsibility of Diamond Products under this Warranty is limited to repair, without charge, any defects due to faulty materials or workmanship. This Warranty does not apply to normal wear items or damaged caused where repairs have been made or attempted by others.

This Warranty gives you specific legal rights and you may have other rights which vary in certain states or provinces.

In no event shall Diamond Products be liable for consequential or incidental damages arising out of the failure of any Product to operate properly.

Integral units such as engines, electric motors, batteries, transmissions, etc., are excluded from this Warranty and are subject to the prime manufacturer's warranty.

THIS WARRANTY IS IN LIEU OF ALL OTHER WARRANTIES, EXPRESSED OR IMPLIED, AND ALL SUCH OTHER WARRANTIES ARE HEREBY DISCLAIMED.



DIAMOND PRODUCTS

333 Prospect Street, Elyria, Ohio 44035
(440) 323-4616 • (800) 321-5336 • Fax (440) 323-8689
www.diamondproducts.com