

DIAMOND
P R O D U C T S

CONCRETE SAW
PARTS LIST

MODELS:
CC6560XL
CC6560XLJ

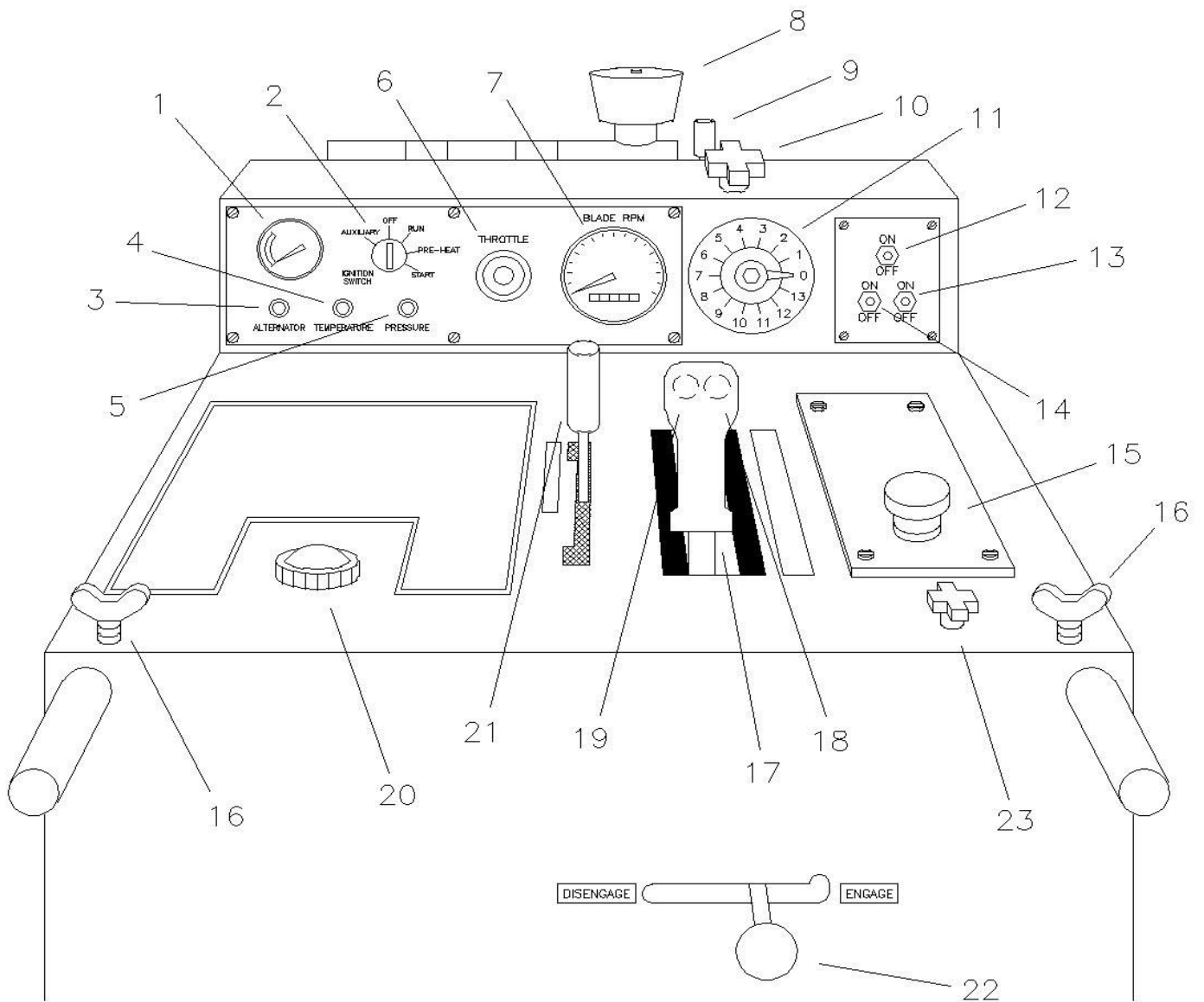
(Revised 04/19/02)

Table of Contents

<u>Description</u>	<u>Page No.</u>
Diesel Saw Controls Legend.....	3
1. Frame Group.....	4 - 5
2. Blade Shaft and Axles Group.....	6 - 7
3. Engine Group.....	8 - 11
4. Sunstrand Transmission Group.....	12 - 13
5. Eaton Transmission Group.....	14 - 15
6. Controls Group.....	16 - 17
7. Blade Guard Assembly.....	18 - 19
8. Jackshaft Group.....	20 - 21
9. Wiring Diagram.....	22 - 23
10. Options Wiring Diagram.....	24
11. Decal Group.....	25
Blade / Engine Speed (RPM) Chart.....	26 - 27
Warranty.....	28

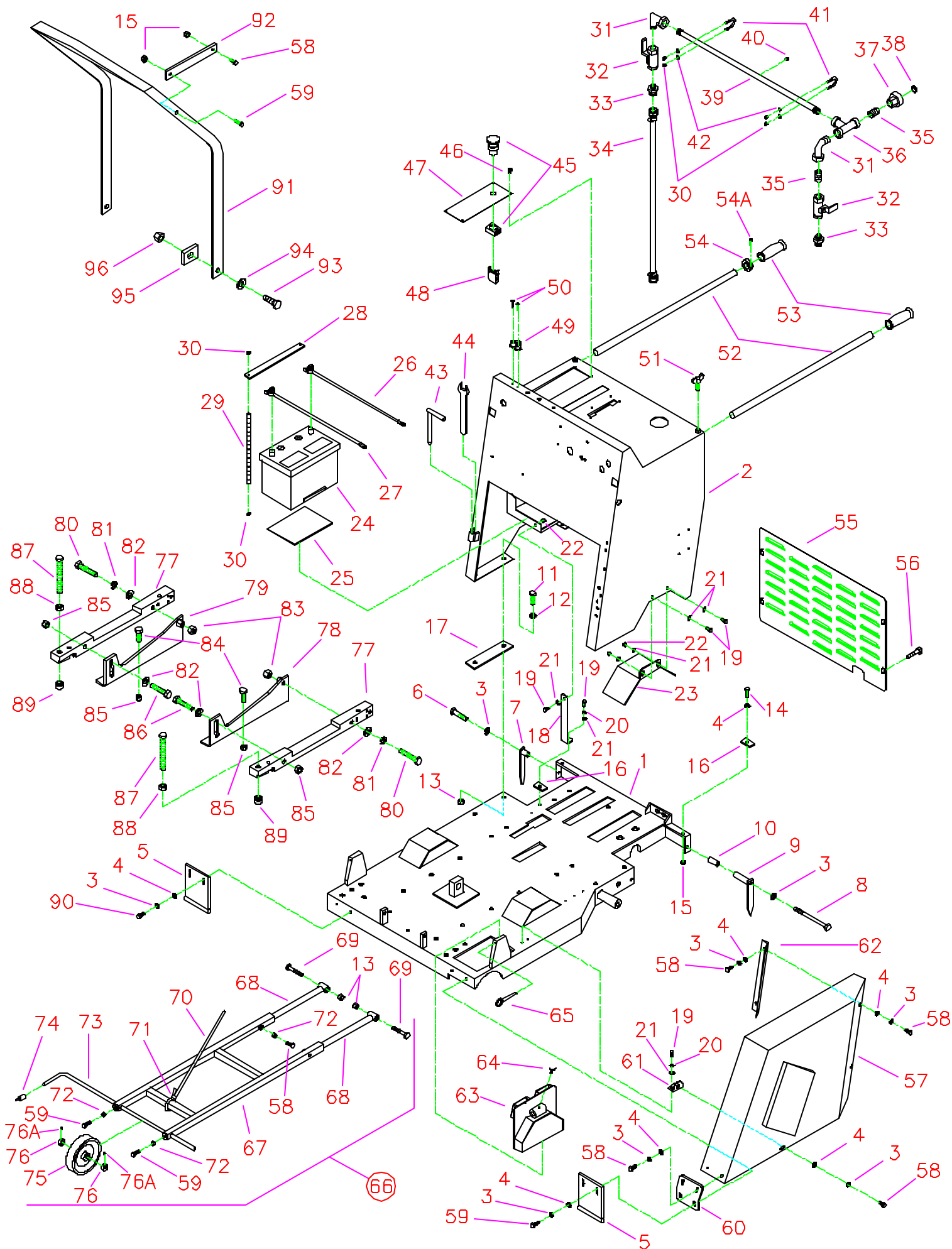
Quick Reference Service Filters

<u>Part #</u>	<u>Description</u>	
2701775	Engine Oil Filter	(Deutz #1174416)
2701339	Engine Fuel Filter	(Deutz #1174482)
2500474	In-line Fuel Tank Filter	(Fram #G2)
2501386	Outer Primary Air Filter	(Donaldson #P827653)
2501387	Inner Safety Air Filter	(Donaldson #P829332)



CC6560XL and CC6560XLJ Diesel Saw Controls Legend

- | | | | |
|----|-----------------------------------|----|--|
| 1 | Engine Temperature Gauge | 13 | Spotlight Switch (Optional) |
| 2 | Ignition Switch | 14 | Water Pump Switch (Optional) |
| 3 | Alternator Light (Orange) | 15 | Emergency Stop Button |
| 4 | Oil Temperature Light (Red) | 16 | Handle Lock Knobs |
| 5 | Oil Pressure Light (Green) | 17 | Speed Control Lever |
| 6 | Vernier Throttle Control | 18 | Lower Pushbutton |
| 7 | Blade Tachometer / Hour Meter | 19 | Raise Pushbutton |
| 8 | Pre-Cleaner | 20 | Fuel Tank Cap |
| 9 | Air Cleaner Restriction Indicator | 21 | Transmission Engagement Lever * |
| 10 | Depth Stop Knob | 22 | Transmission Engagement Lever ** |
| 11 | Cutting Depth Indicator | 23 | Lowering Speed Metering Valve (Optional) |
| 12 | Water Safety Switch (Optional) | | |
- * For Eaton Transmission Only
 ** Optional for Sundstrand Transmission Only

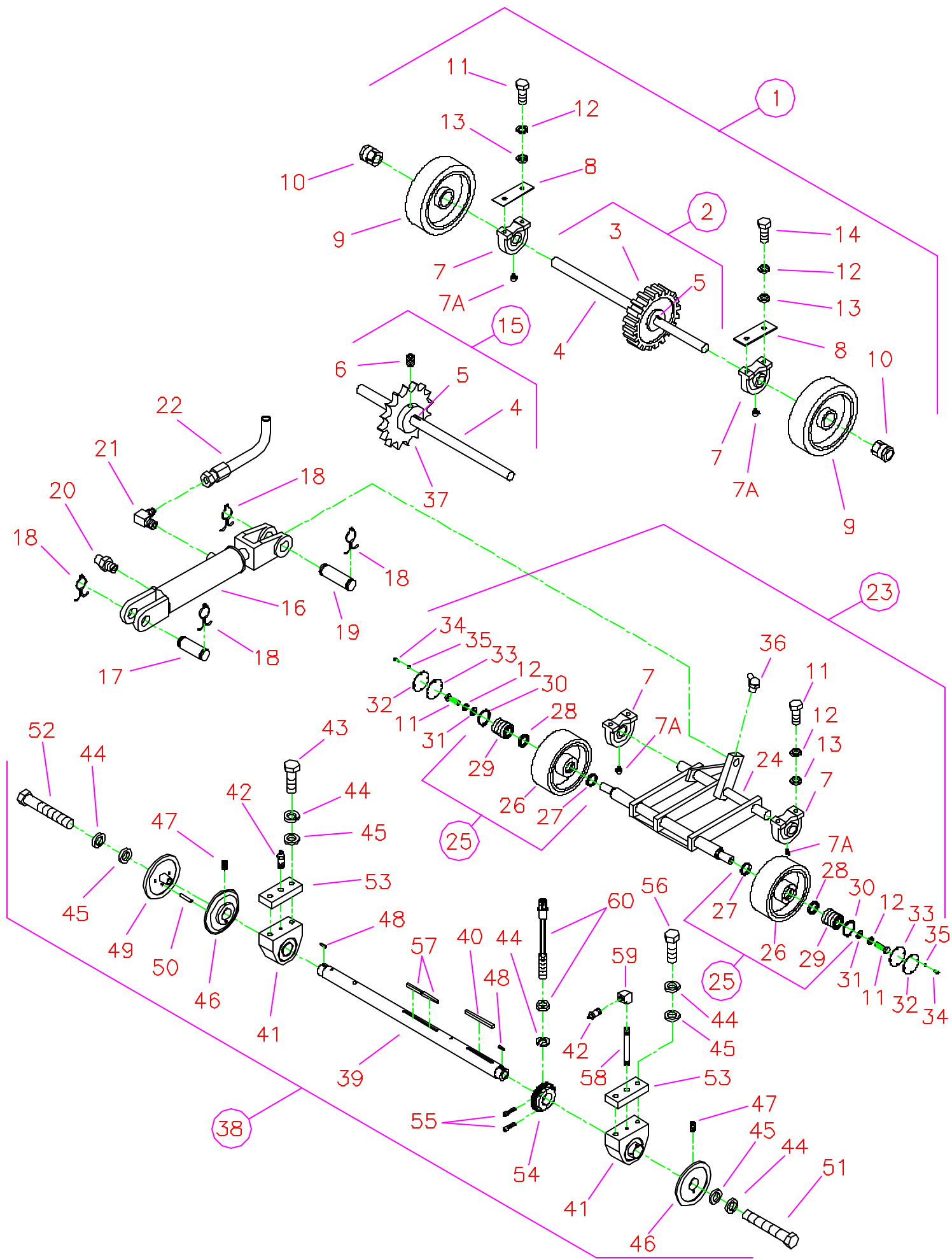


CC6560XL Parts List

Drawing 1

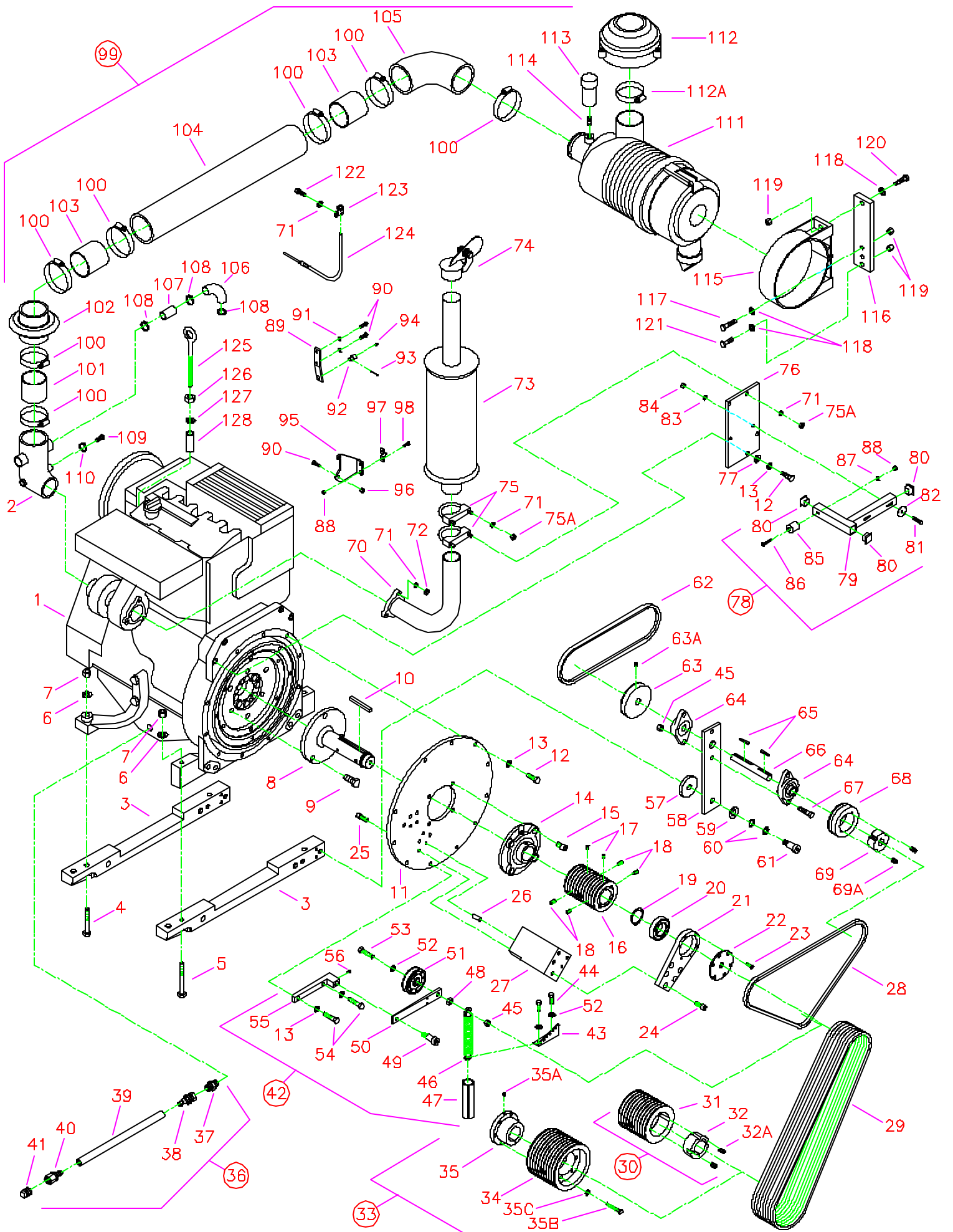
Frame Group

Diagram Number	Part No.	Qty. Req.	Description	Diagram Number	Part No.	Qty. Req.	Description
1	6010550	1	Frame Base	51	2900430	2	Hand Lock Knob, 1/2"-13 x 1-1/2"
2	6010001	1	Frame Upright	52	6010014	2	Handle Bar, 36" Long
3	2900006	13	Lock Washer, 3/8" Split		6010328	2	Handle Bar, 48" Long
4	2900014	13	Flat Washer, 3/8" SAE	53	2500636	2	Handle Grip
5	6010548	2	Skid Plate	54	2501412	1	Shaft Collar, 1" Split
6	2900047	1	Capscrew, Hex Hd., 3/8"-16 x 1-3/4"	54A	REF	1	Capscrew, Soc. Hd., 1/4"-28 x 5/8"
7	6010022	1	Rear Pointer, Right Side	55	6010015	1	Rear Cover Screen
8	2900177	1	Capscrew, Hex Hd., 3/8"-16 x 6"	56	2900180	4	Machine Screw, Hex Washer Hd., 1/4"-20 x 1"
9	6010514	1	Rear Pointer, Left Side	57	6010557	1	Belt Guard for CC6560XL
10	6041081	1	Spacer, 1-3/4" Long		6010571	1	Belt Guard for CC6560XLJ
11	2900139	4	Capscrew, Hex Hd., 1/2"-13 x 1-3/4"	58	2900005	11	Capscrew, Hex Hd., 3/8"-16 x 1"
12	2900058	4	Flat Washer, 1/2" SAE	59	2900013	6	Capscrew, Hex Hd., 3/8"-16 x 1-1/4"
13	2900026	6	Lock Nut, 1/2"-13 Nylon	60	6010553	1	Guard Attachment Plate 25° for CC6560XL
14	2900029	2	Capscrew, Hex Hd., 3/8"-16 x 1-1/2"		6010572	2	Guard Attachment Plate (Flat) for CC6560XLJ
15	2900018	6	Lock Nut, 3/8"-16 Nylon	61	6010558	1	Guard Mounting Tab 90°
16	2501337	3	Rubber Frame Mount, Rear	62	6010556	1	Belt Guard Mount Bracket 60°
17	2501338	2	Rubber Frame Mount, Front	63	6010555	1	Shaft/Flange Guard
18	6010554	1	Battery Support Brace	64	2900307	1	Wing Screw, M6 x 16mm
19	2900019	8	Capscrew, Hex Hd., 5/16"-18 x 3/4"	65	2900156	1	Lock Pin
20	2900031	3	Lock Washer, 5/16" Split	66	6010540	1	Front Pointer Assembly
21	2900022	12	Flat Washer, 5/16" SAE	67	6010541	1	Front Pointer Frame
22	2900039	5	Lock Nut, 5/16"-18 Nylon	68	6011152	2	Front Pointer Arm
23	6010577	2	Wheel Fender	69	2900105	2	Capscrew, Hex Hd., 1/2"-13 x 2-3/4"
24	2700208	1	Battery, 12 Volt	70	6013055	1	Pointer Cable
25	6010016	1	Battery Pad	71	3200221	2	Cable Clamp
26	2800073	1	Battery Cable, Positive (Red)	72	2900033	4	Hex Nut, 3/8"-16
27	2800072	1	Battery Cable, Negative (Black)	73	6013025	1	Front Pointer Rod
28	6010017	1	Battery Top Brace	74	2500740	1	Pointer Cap
29	6010018	2	Rod, 1/4"-20 x 8-1/2"	75	2501409	1	Wheel, 6"
30	2900010	8	Lock Nut, 1/4"-20 Nylon	76	2500007	2	Set Collar, 1/2" with Setscrew
31	3200013	2	Street Elbow, 1/2" NPT	76A	2900056	2	Setscrew, Soc. Hd., 1/4"-20 x 1/4"
32	3200027	2	Water Valve	77	6013008	2	Engine Support Leg
33	3200155	2	Fitting, 1/2" Male Pipe to 3/4" Male Garden Hose	78	6010551	1	Engine Mount, Left
34	6010021	1	Hose Assembly, 42" Long	79	6010552	1	Engine Mount, Right
35	3200008	2	Close Nipple, 1/2" NPT	80	2900099	2	Capscrew, Hex Hd., 5/8"-11 x 3-1/2"
36	3200045	1	Pipe Tee, 1/2" NPT	81	2900113	2	Lock Washer, 5/8" Split
37	3200022	1	Fitting, 1/2" Female Pipe to 3/4" Female Garden Hose	82	2900002	4	Flat Washer, 5/8" SAE
38	3200025	1	Filter Hose Washer	83	2900112	2	Hex Nut, 5/8"-11
39	6090069	1	Water Supply Tube	84	2900147	6	Capscrew, Hex Hd., 5/8"-11 x 1-3/4"
40	3200001	1	Plug 1/8" NPT	85	2900135	8	Lock Nut, 5/8"-11 Nylon
41	2900241	2	U-Bolt, 1/2" Pipe	86	2900195	2	Capscrew, Hex Hd., 5/8"-11 x 3"
42	2900009	4	Flat Washer, 1/4" SAE	87	2900475	2	Tap Bolt, Hex Hd., 3/4"-10 x 5"
43	2900154	1	Bladeshift Lock-Pin	88	2900041	2	Hex Nut, 3/4"-10
44	2500211	1	Bladeshift Wrench, 15/16"	89	2900476	2	Swivel Pad Nut, 3/4"-10
45	2800213	1	Emergency Stop Button	90	2900196	2	Capscrew, Hex Hd., 3/8"-16 x 3/4"
46	2900021	4	Tapscrew, Pan Hd., #10-24 x 3/8"	91	6013051	1	Frame Lift
47	6010019	1	Hydraulic Pump Cover Plate	92	6013052	1	Frame Lift Brace
48	2800229	1	Contact Block N.C.	93	2900465	2	Capscrew, Hex Hd., 3/4"-10 x 2-1/4"
49	2501427	1	Cable Cleat	94	2900003	2	Flat Washer, 3/4" SAE
50	2900483	2	Tapscrew, Flat Hd., #10-24 x 1"	95	6013053	2	Frame Lift Spacer
				96	2900467	2	Lock Nut, 3/4"-10 Nylon



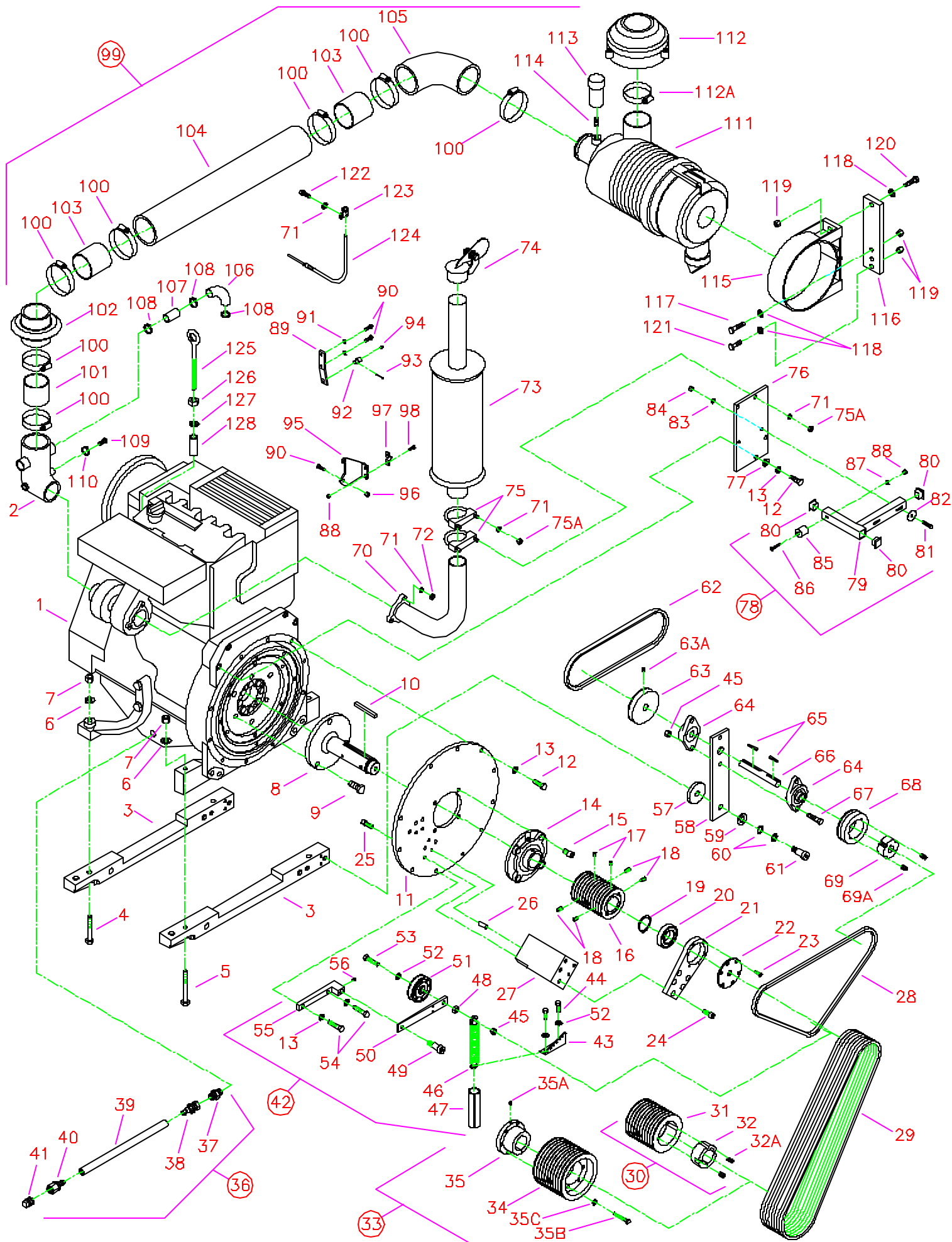
CC6560XL Parts List
Drawing 2
Blade Shaft and Axles Group

Diagram Number	Part No.	Qty. Req.	Description	Diagram Number	Part No.	Qty. Req.	Description
1	6010280	1	Rear Axle Assembly with 68 Tooth Gear (Includes #2 - #14)	36	2900184	1	Grease Fitting, 1/4"-28 x 45°
	6010282	1	Rear Axle Assembly with Chain Sprocket (Includes #4 - #15)	37	2500267	1	Wheel Drive Sprocket, 35 Tooth
2	6010279	1	Rear Axle Weldment with 68 Tooth Gear (Includes #3 - #5)	38	6010578	1	Blade Shaft Assembly with 4-1/2" Diameter Flanges (Includes #39 - #57) for 20" Blade Guard
3	6010284	1	Wheel Drive Gear, 68 Tooth	6010579	1	Blade Shaft Assembly with 5" Diameter Flanges (Includes #39 - #57) for 26" Blade Guard	
4	6010278	1	Rear Axle	6010580	1	Blade Shaft Assembly with 6" Diameter Flanges (Includes #39 - #57) for 30" & 36" Blade Guards	
5	6010169	1	Key, 1/4" Sq. x 1-1/4"				
6	2900142	2	Setscrew, Soc. Hd., 5/16"-18 x 3/8"	39	6010543	1	Blade Shaft
7	2500158	4	Pillow Block Bearing 1-1/4"	40	4645006	1	Key, 3/8" Sq. x 4" for CC6560XL
7A	2900061	4	Grease Fitting, 1/4"-28 x 90°	41	2500151	2	Blade Shaft Bearing, 1-3/4"
8	6010024	2	Rear Axle Bearing Spacer, 1/8"	42	2900264	2	Grease Fitting, 1/8" NPT x 1-3/4"
9	2500873	2	Wheel, 10" Rear with 2" Bore	43	2900136	2	Capscrew, Hex Hd., 5/8"-11 x 2"
10	2500874	2	Trantorque Bushing, 1-1/4"	44	2900113	7	Lock Washer, 5/8" Split
11	2900025	8	Capscrew, Hex Hd., 1/2"-13 x 1-1/4"	45	2900002	6	Flat Washer, 5/8" SAE
12	2900084	10	Lock Washer, 1/2" Split	46	6010036	2	Inner Flange, 4-1/2" for 20" Blade Guard
13	2900058	8	Flat Washer, 1/2" SAE	6010255	2	Inner Flange, 5" for 26" Blade Guard	
14	2900139	2	Capscrew, Hex Hd., 1/2"-13 x 1-3/4"	6010038	2	Inner Flange, 6" for 30" & 36" Blade Guards	
15	6010281	1	Rear Axle Weldment with Chain Sprocket (Includes #4 - #6, #37)	47	2900418	2	Setscrew, Soc. Hd., 5/16"-18 x 5/8"
16	2500177	1	Hydraulic Cylinder	48	6010040	2	Key, 1/4" Sq. x 13/16"
	2500278	1	(Seal Kit)	49	6010037	1	Outer Flange, 4-1/2" with Drive Pin for 20" Blade Guard
17	6010031	1	Cylinder Pin, 3"	6047907	1	Outer Flange, 5" with Drive Pin for 26" Blade Guard	
18	2900064	4	Hair Pin Cotter, 3/4"	6010039	1	Outer Flange, 6" with Drive Pin for 30" & 36" Blade Guards	
19	6010119	1	Cylinder Pin, 3-1/2"	50	2900197	1	Drive Pin, 3/8" Dia. x 2"
20	3200067	1	Cylinder Breather, 1/4" NPT	51	2900146	1	Capscrew, Hex Hd., 5/8"-11 x 4" Right Hand
21	3200057	1	Elbow, 1/4" Male Pipe to 1/4" Male JIC	52	2900130	1	Capscrew, Hex Hd., 5/8"-11 x 4" Left Hand
22	3200054	1	Hydraulic Hose Assembly, 32" Long	53	6010035	2	Blade Shaft Bearing Spacer, 5/8"
23	6010562	1	Front Axle Assembly (Includes #7, #11 - #13, #24 - #36)	54	6010230	1	Shaft Tach Gear, Split
24	6010535	1	Front Axle Weldment	55	2900089	2	Capscrew, Soc. Hd., 1/4"-28 x 1"
25	6010581	2	Wheel Assembly, 8" Front (Includes #26 - #30)	56	2900136	2	Capscrew, Hex Hd., 5/8"-11 x 2" for CC6560XL
26	2501390	2	Wheel, 8" Front	2900527	2	Capscrew, Hex Hd., 5/8"-11 x 2-1/2" for CC6560XLJ	
27	2501428	2	Seal, 1-1/2" V-Ring	57	6011058	2	Key, 3/8" Sq. x 2-3/4" for CC6560XLJ
28	2501391	2	Seal, 1-1/4" x 1-3/4" x 1/4"	58	3200179	1	Pipe Nipple, 1/8" NPT x 3" for CC6560XLJ
29	2501418	8	Bearing, 1" x 2" x 1/2"	59	3200154	1	Pipe Elbow, 1/8" NPT Female for CC6560XLJ
30	2501392	2	Retaining Ring, 2" Internal	60	2800169	1	Magnetic Sensor with Wire Connector and Hex Nut
31	2900127	2	Flat Washer, 1/2" USS				
32	6010536	2	Wheel Cover				
33	2501393	2	Wheel Cover Gasket				
34	2900159	8	Capscrew, Round Hd., #10-24 x 5/8"				
35	2900038	8	Lock Washer, #10 Split				



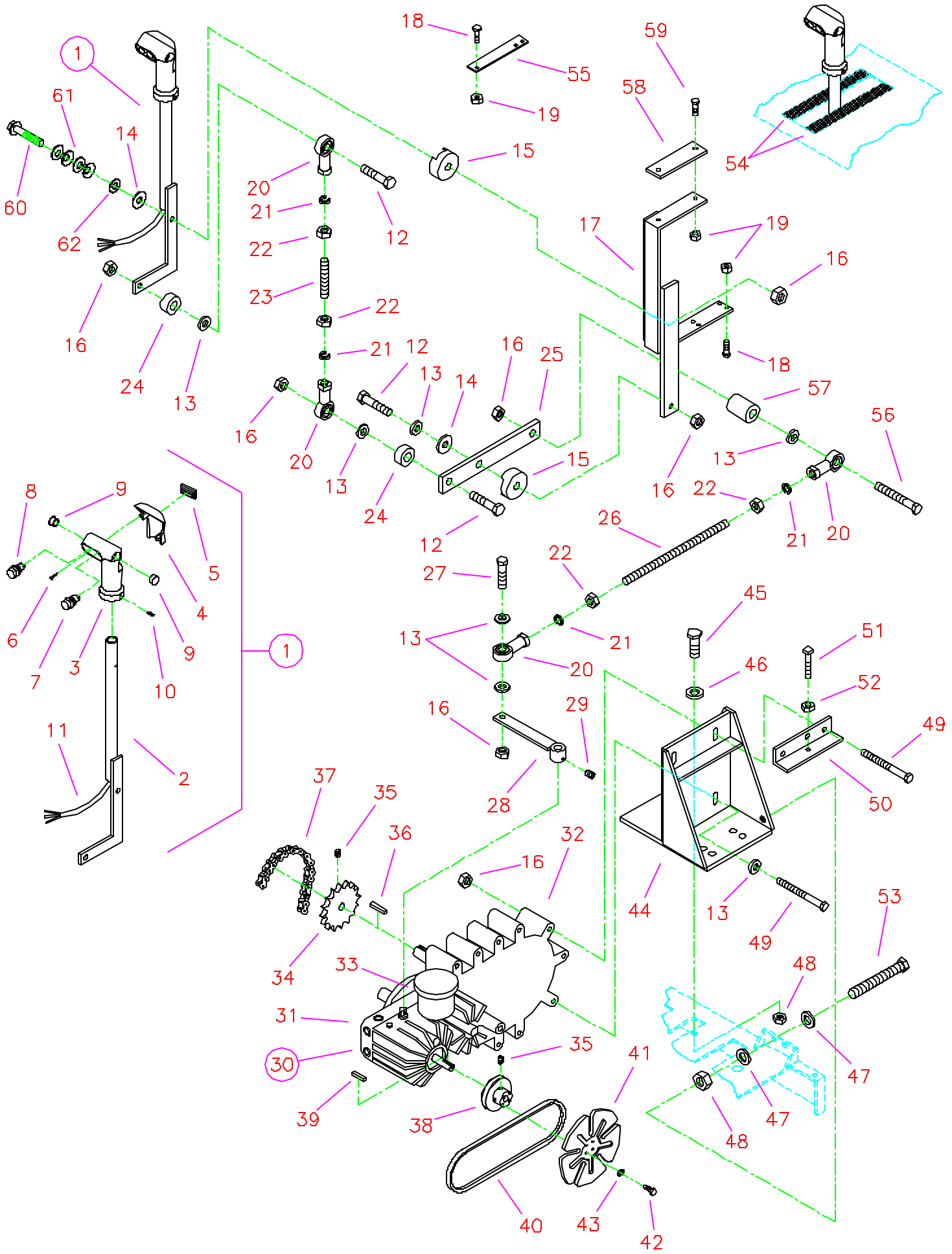
CC6560XL Parts List
Drawing 3
Engine Group

Diagram Number	Part No.	Qty. Req.	Description	Diagram Number	Part No.	Qty. Req.	Description
1	2600257	1	Engine, Deutz Diesel Model BF3L1011F (Includes #2)	31	2501381	1	Sheave, 4.50-10 Groove Taper Style for 20" Blade Guards
	2701775	1	(Oil Filter)		2500655	1	Sheave, 5.00-10 Groove Taper Style for 26" Blade Guards
	2701339	1	(Fuel Filter)				
2	2702207	1	Turbo Inlet Hose Elbow	32	2501410	1	Taper Bushing, 1-3/4" with Setscrews for 20" Blade Guards
3	6013008	2	Engine Support Leg				
4	2900346	2	Capscrew, Hex Hd., M12 x 80mm		2500454	1	Taper Bushing, 1-3/4" with Setscrews for 26" Blade Guards
5	2900347	2	Capscrew, Hex Hd., M12 x 100mm				
6	2900058	4	Flat Washer, 1/2" SAE	32A	2900485	2	Setscrew, Soc. Hd., 7/16"-14 x 7/8" for 20" Blade Guards
7	2900327	4	Lock Nut, M12 Nylon				
8	6010530	1	PTO Shaft		2900486	2	Setscrew, Soc. Hd., 1/2"-13 x 1" for 26" Blade Guards
9	2900349	3	Capscrew, Hex Hd., M14 x 35mm				
10	6012065	1	Key, 3/8" Sq. x 3-1/2"	33	6013046	1	Sheave, 6.00-10 Groove with 1-3/4" QD Bushings for 30" and 36" Blade Guards (Includes #34 and #35)
11	6012037	1	Inner Ring Support				
12	2900223	11	Capscrew, Hex Hd., M10 x 30mm				
13	2900321	13	Lock Washer, M10 Split	34	2500439	1	Sheave Only, 6.00-10 Groove QD Style for 30" and 36" Blade Guards
14	6010509	1	Flange Cartridge Bearing, 1-3/4"				
15	2900460	4	Capscrew, Soc. Hd., 7/16"-14 x 3/4"	35	2500176	1	Bushing Only, 1-3/4" QD with Fasteners
16	6010534	1	Sheave, 3.60 - 11 Groove x 1-3/4" Bore	35A	2900056	1	Setscrew, Soc. Hd., 1/4"-20 x 1/4"
17	2900142	2	Setscrew, Soc. Hd., 5/16"-18 x 3/8"	35B	2900289	3	Capscrew, Hex Hd., 5/16"-18 x 2-1/4"
18	2900418	4	Setscrew, Soc. Hd., 5/16"-18 x 5/8"	35C	2900031	3	Lock Washer, 5/16" Split
19	2501376	1	Retaining Ring, 1-3/4" External	36	6010516	1	Oil Drain Hose Assembly (Includes #37 - #41)
20	2500747	1	Ball Bearing, 1-1/2" Bore				
21	6010532	1	Outer Bearing Support	37	3200180	1	Fitting, M18 x 1.5 Male to 1/2" Male JIC
22	6010533	1	Retaining Disc	38	3200181	1	Fitting, 1/2" Female JIC to 1/2" Push Lock
23	2900469	6	Capscrew, Flat Hd., #10-24 x 3/4"	39	6010245	1	Oil Drain Hose, 13" Long
24	2900175	5	Capscrew, Soc. Hd., 3/8"-16 x 1"	40	3200163	1	Fitting, 1/2" Female Pipe to 1/2" Push Lock
25	2900230	3	Capscrew, Flat Hd., 3/8"-16 x 1-1/4"	41	3200160	1	Plug, 1/2" NPT
26	2900067	2	Dowel Pin, 3/8" Dia. x 1-1/4"	42	6010539	1	Idler Assembly (Includes #13, #43 - #56)
27	6010531	1	Support Block	43	6011217	1	Idler Spring Bracket
28	2500793	1	V-Belt, 3VX425 for CC6560XL	44	2900005	2	Capscrew, Hex Hd., 3/8"-16 x 1"
	2500037	1	V-Belt, 3VX375 for CC6560XLJ	45	2900018	3	Lock Nut, 3/8"-16 Nylon
29	2500371	10	V-Belt, 3VX500 for CC6560XL with 20" and 26" Blade Guards	46	2501396	1	Spring, 1" Dia. x .105" x 6" Long
				47	6010582	1	Spring Cover, Split
	2501009	2	Banded Belt, 5/3VX530 - 5 Strand for CC6560XL with 30" and 36" Blade Guards	48	2900033	1	Hex Nut, 3/8"-16
	2500037	10	V-Belt, 3VX375 for CC6560XLJ	49	2900587	1	Shoulder Screw, 1/2" Dia. x 1"
30	6010545	1	Sheave, 4.50-10 Groove with 1-3/4" Taper Bushings for 20" Blade Guards (Includes #31 & #32)	50	6012046	1	Idler Arm
				51	2500074	1	Idler Pulley
				52	2900006	3	Lock Washer, 3/8" Split
				53	2900060	1	Capscrew, Hex Hd., 3/8"-16 x 2"
	6010573	1	Sheave, 5.00-10 Groove with 1-3/4" Taper Bushings for 26" Blade Guards (Includes #31 & #32)	54	2900316	2	Capscrew, Hex Hd., M10 x 40mm
				55	6011215	1	Idler Arm Bracket
			56	2900056	1	Setscrew, Soc. Hd., 1/4"-20 x 1/4"	



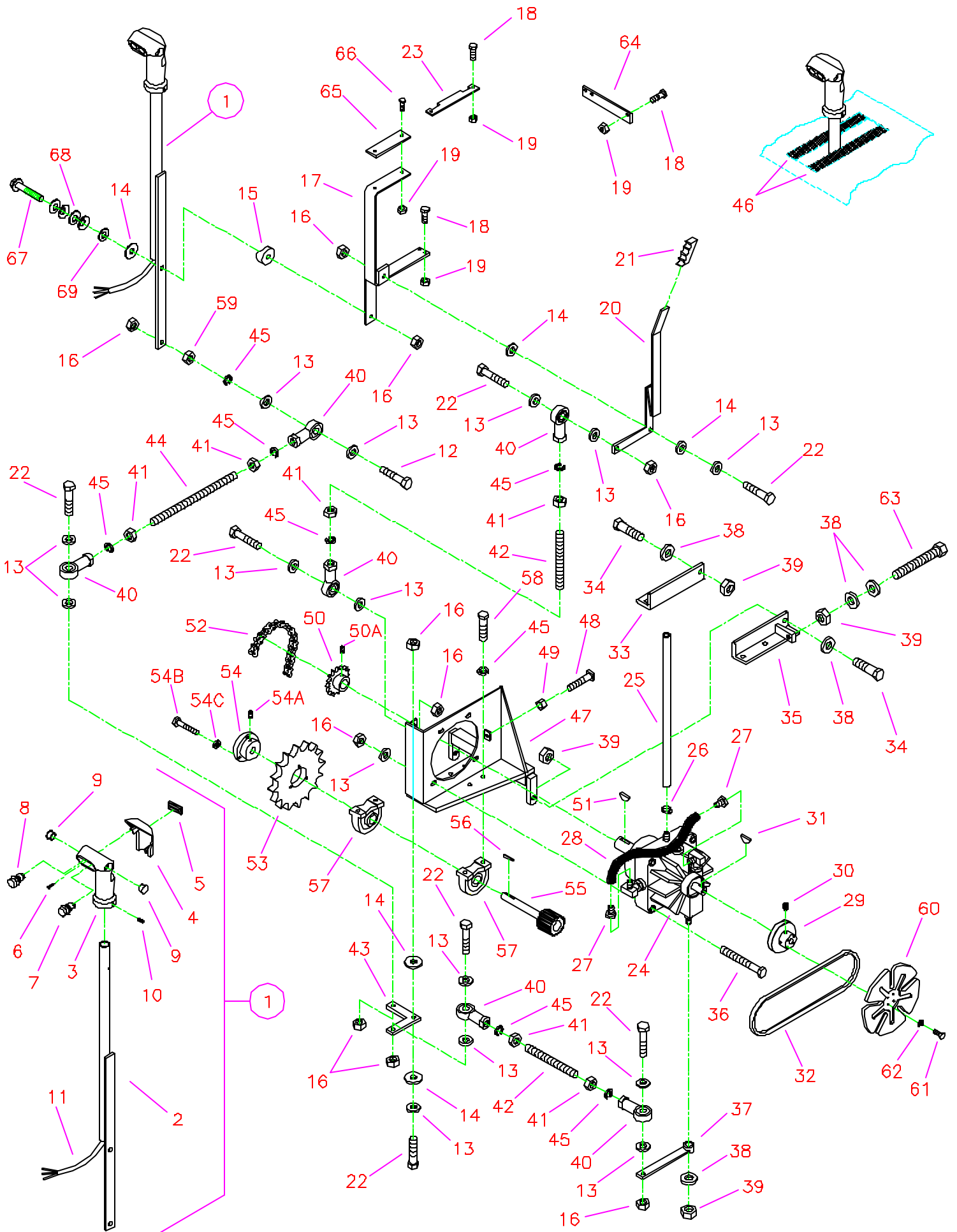
CC6560XL Parts List
Drawing 3
Engine Group

Diagram Number	Part No.	Qty. Req.	Description	Diagram Number	Part No.	Qty. Req.	Description
57	6010538	1	Friction Washer	94	2900059	1	Setscrew, Soc. Hd., #10-32 x 1/4"
58	6010537	1	Jackshaft Mount Plate	95	6010523	1	Throttle Bracket
59	2900002	1	Flat Washer, 5/8" SAE	96	2900302	2	Lock Nut, M6 Nylon
60	2900478	2	Belleville Washer, 5/8"	97	2500940	1	Throttle Cable Clamp
61	2900477	1	Shoulder Screw, 5/8" Dia. x 1"	98	2900015	2	Machine Screw, Hex Hd., #10-24 x 3/4"
62	2501290	1	V-Belt, 4L-290 for Sunstrand Transmission	99	6010576	1	Air Intake Hose Assembly (Includes #100 - #110)
	2501217	1	V-Belt, 4L-380 for Eaton Transmission				
63	2500455	1	Pulley, 4" Single Groove with Setscrew	100	3200197	7	Hose Clamp #52
63A	2900142	1	Setscrew, Soc. Hd., 5/16"-18 x 3/8"	101	6013118	1	Connector Tube, 2-3/4" O.D.
64	2500202	2	Flange Block Bearing, 3/4"	102	2501414	1	Hose Reducer, 3" to 2-3/4"
65	6048229	2	Key, 3/16" Sq. x 1-1/4"	103	6010559	2	Connector Tube, 3" O.D.
66	6013028	1	Idler Jackshaft	104	6010574	1	Air Cleaner Hose, 3" I.D. x 20" Long
67	2900047	2	Capscrew, Hex Hd., 3/8"-16 x 1-3/4"	105	2500669	1	Hose Elbow, 3" I.D.
68	2501325	1	Sheave, 3V-3.65-1 Groove	106	6010575	1	Intake Hose, 3/4" I.D. x 5" Long
69	2501191	1	Taper Bushing, 3/4" with Setscrews	107	4640011	1	Connector Tube, 7/8" O.D.
69A	2900484	2	Setscrew, Soc. Hd., 3/8"-16 x 5/8"	108	3200135	3	Hose Clamp #16
70	6013110	1	Exhaust Pipe Weldment	109	2900330	1	Capscrew, Hex Hd., M12 x 30mm
71	2900031	8	Lock Washer, 5/16" Split	110	3200062	1	Hose Clamp #4
72	2900343	3	Hex Nut, M8	111	2501384	1	Air Cleaner Complete
73	2700746	1	Muffler		2501386	1	(Outer Primary Element)
74	2700747	1	Rain Cap		2501387	1	(Inner Safety Element)
75	2700748	2	Muffler Clamp with Hex Nuts		2500239	1	(Rubber Dust Ejector Boot)
75A	2900141	4	Hex Nut, 5/16"-18	112	2501388	1	Pre-Cleaner with Clamp
76	6013102	1	Exhaust Support Plate	112A	3200197	1	Hose Clamp #52
77	2900014	2	Flat Washer, 3/8" SAE	113	2500423	1	Restriction Indicator
78	6010584	1	Pointer Stop Assembly (Includes #79 - #88)	114	3200117	1	Close Nipple, 1/8" NPT
79	6010583	1	Pointer Stop	115	2501385	1	Mounting Band
80	2500573	3	Plug, 1" Square Tube	116	6010325	1	Air Cleaner Spacer
81	2900294	2	Capscrew, Hex Hd., 1/4"-20 x 2"	117	2900538	1	Capscrew, Hex Hd., 5/16"-18 x 1-3/4"
82	2900083	2	Fender Washer, 1/4" x 1-1/4"	118	2900022	3	Flat Washer, 5/16" SAE
83	2900009	2	Flat Washer, 1/4" SAE	119	2900039	3	Lock Nut, 5/16"-18 Nylon
84	2900010	2	Lock Nut, 1/4" Nylon	120	2900508	1	Capscrew, Hex Hd., 5/16"-18 x 1-1/2"
85	2501093	1	Bumper 1"	121	2900217	1	Capscrew, Hex Hd., 5/16"-18 x 1-1/4"
86	2900172	1	Machine Screw, Round Hd., #10-24 x 1-1/4"	122	2900360	1	Capscrew, Hex Hd., M8 x 25mm
87	2900016	1	Flat Washer, #10 USS	123	2501434	1	Hose Clamp, 1/2" Dia. x 3/4" Wide
88	2900017	3	Lock Nut, #10-24 Nylon	124	2500376	1	Vernier Throttle Cable
89	6013029	1	Throttle Arm	125	2900481	1	Eyebolt, M12 x 6"
90	2900310	4	Capscrew, Hex Hd., M6 x 20mm	126	2900482	1	Hex Nut, M12
91	2900024	2	Lock Washer, 1/4" Split	127	2900084	1	Lock Washer, 1/2" Split
92	6048212	1	Pivot Pin	128	4600117	1	Spacer, 2-1/4" Long
93	2900034	1	Cotter Pin, 3/32" x 3/4"				



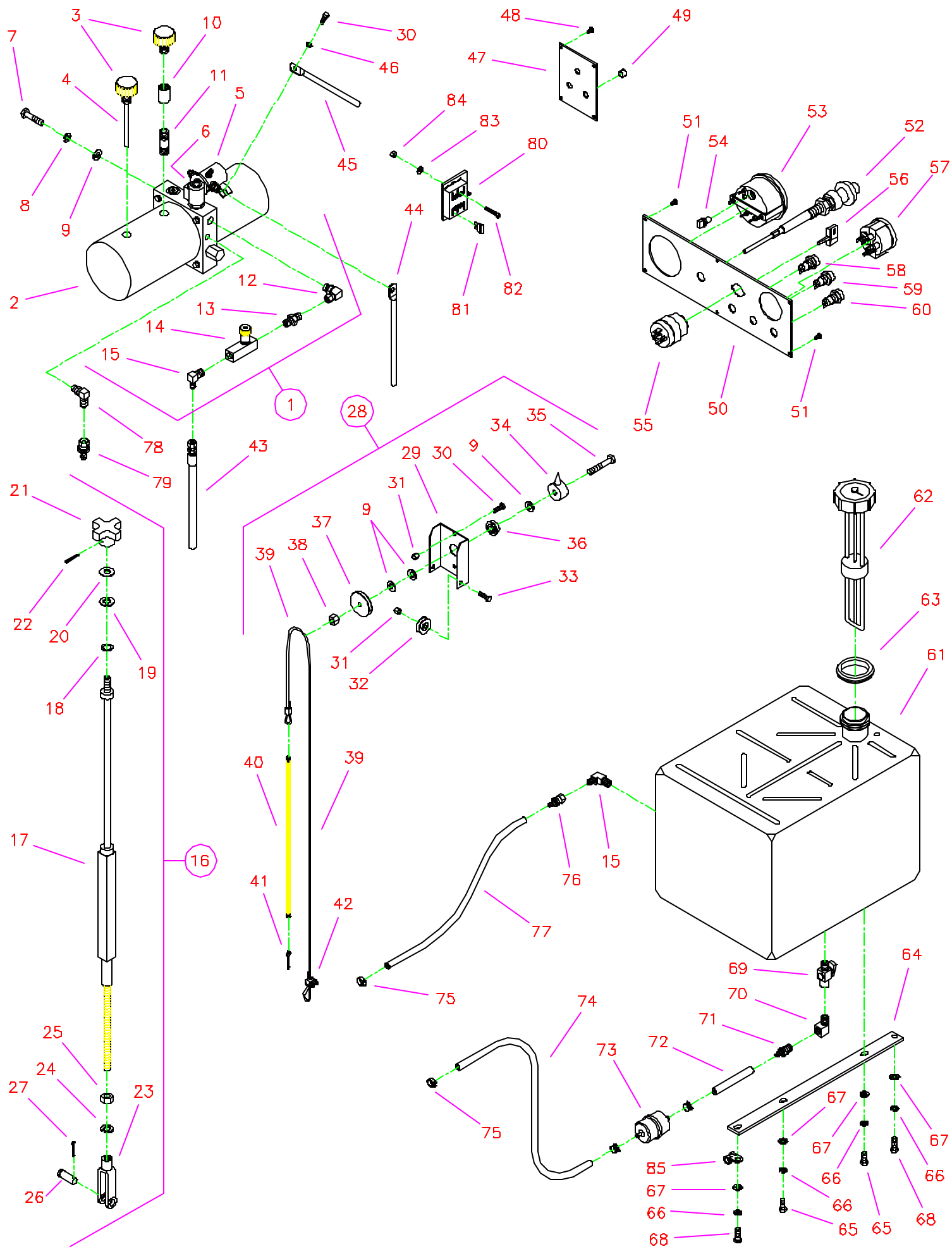
CC6560XL Parts List
Drawing 4
Sundstrand Transmission Group

Diagram Number	Part No.	Qty. Req.	Description	Diagram Number	Part No.	Qty. Req.	Description
1	6010317	1	Speed Control Lever Assembly (Includes #2 - #11)	32	2600085	1	Transaxle Gearbox Only
				33	2700357	1	Oil Reservoir Only
2	6010315	1	Speed Control Lever Only	34	6010127	1	Transmission Sprocket, 19 Tooth
3	2501280	1	Control Grip Body	35	2900142	4	Setscrew, Soc. Hd., 5/16"-18 x 3/8"
4	2501281	1	Control Grip Cover	36	6010169	1	Key, 1/4" Sq. x 1-1/4"
5	2500644	1	Plug, Rectangular	37	6010130	1	#50 Chain, 50 Pitch
6	2900452	1	Machine Screw, Oval Head, #4 x 5/8"	38	6011037	1	Transmission Pulley
7	2800372	1	Pushbutton Switch, Raise	39	6010170	1	Key, 3/16" Sq. x 1"
8	2800373	1	Pushbutton Switch, Lower	40	2501290	1	V-Belt, 4L-290
9	2500694	2	Plug, 5/8" Hole	41	2500519	1	Cooling Fan, 7"
10	2900453	1	Setscrew, Soc. Hd., M5 x 12mm	42	2900448	4	Machine Screw, Hex Hd., #10-32 x 1/2"
11	2800393	1	Wiring Harness, Hydraulic Pump				
12	2900047	3	Capscrew, Hex Hd., 3/8"-16 x 1-3/4"	43	2900038	4	Lock Washer, #10 Split
13	2900014	8	Flat Washer, 3/8" SAE	44	6010118	1	Transmission Platform Weldment
14	2900153	2	Friction Washer, 3/8"	45	2900139	1	Capscrew, Hex Hd., 1/2"-13 x 1-3/4"
15	6010055	2	Friction Spacer	46	2900127	1	Flat Washer, 1/2" USS
16	2900018	10	Lock Nut, 3/8"-16 Nylon	47	2900058	2	Flat Washer, 1/2" SAE
17	6010122	1	Lever Support Weldment	48	2900026	2	Lock Nut, 1/2"-13 Nylon
18	2900144	6	Capscrew, Hex Hd., 1/4"-20 x 3/4"	49	2900160	4	Capscrew, Hex Hd., 3/8"-16 x 4"
19	2900010	8	Lock Nut, 1/4"-20 Nylon	50	6010120	1	Chain Tensioning Bracket
20	2500152	4	Rod End, 3/8"-24	51	2900140	1	Setscrew, Sq. Hd., 5/16"-18 x 1-1/2"
21	2900006	4	Lock Washer, 3/8" Split	52	2900141	1	Hex Nut, 5/16"-18
22	2900148	4	Hex Nut, 3/8"-24	53	2900542	1	Tap Bolt, Hex Hd., 1/2"-13 x 3-1/2"
23	6010167	1	Rod, 3/8"-24 x 2-1/4"	54	6010101	2	Edge Trim
24	2500007	2	Set Collar, 1/2"	55	6010166	2	Gate Cover Bar
25	6010123	1	Linkage Lever	56	2900596	1	Capscrew, Hex Hd., 3/8"-16 x 2-1/2"
26	6010168	1	Rod, 3/8"-24 x 9-3/4"	57	6030126	1	Linkage Spacer, 1"
27	2900029	1	Capscrew, Hex Hd., 3/8"-16 x 1-1/2"	58	2501339	1	Rubber Support Mount
28	6010129	1	Shift Lever	59	2900008	2	Capscrew, Hex Hd., 1/4"-20 x 1"
29	2900429	1	Setscrew, Soc. Hd., 5/16"-24 x 1/2"	60	2900472	1	Capscrew, Hex Flange Hd., 3/8"-16 x 2"
30	2600021	1	Hydrostatic Transaxle Assembly (Includes #31 - #33)	61	2900474	4	Belleville Washer, 3/8"
				62	2900473	1	Flat Washer, 3/8" USS
31	2600033	1	Hydrostatic Transmission Only				



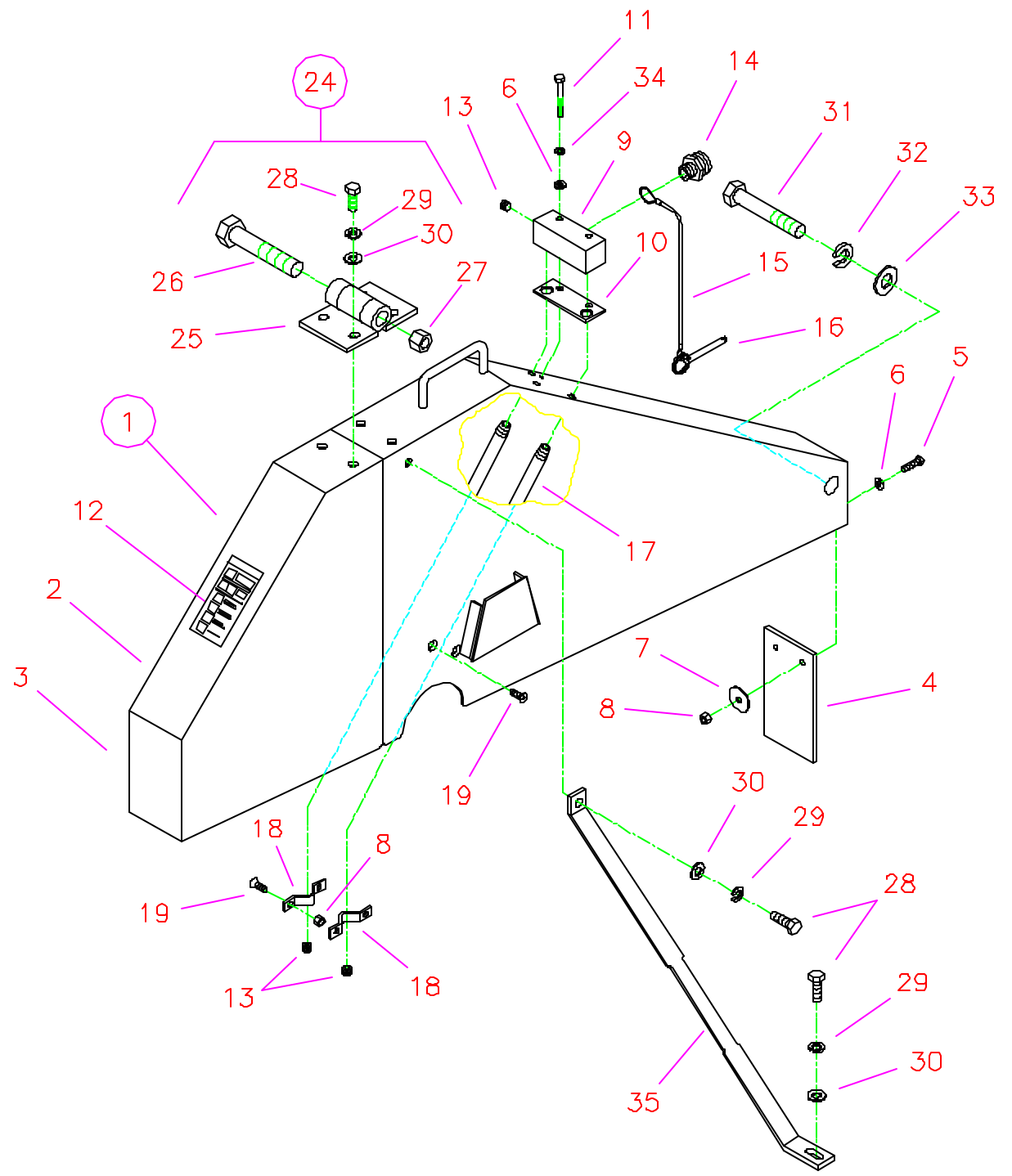
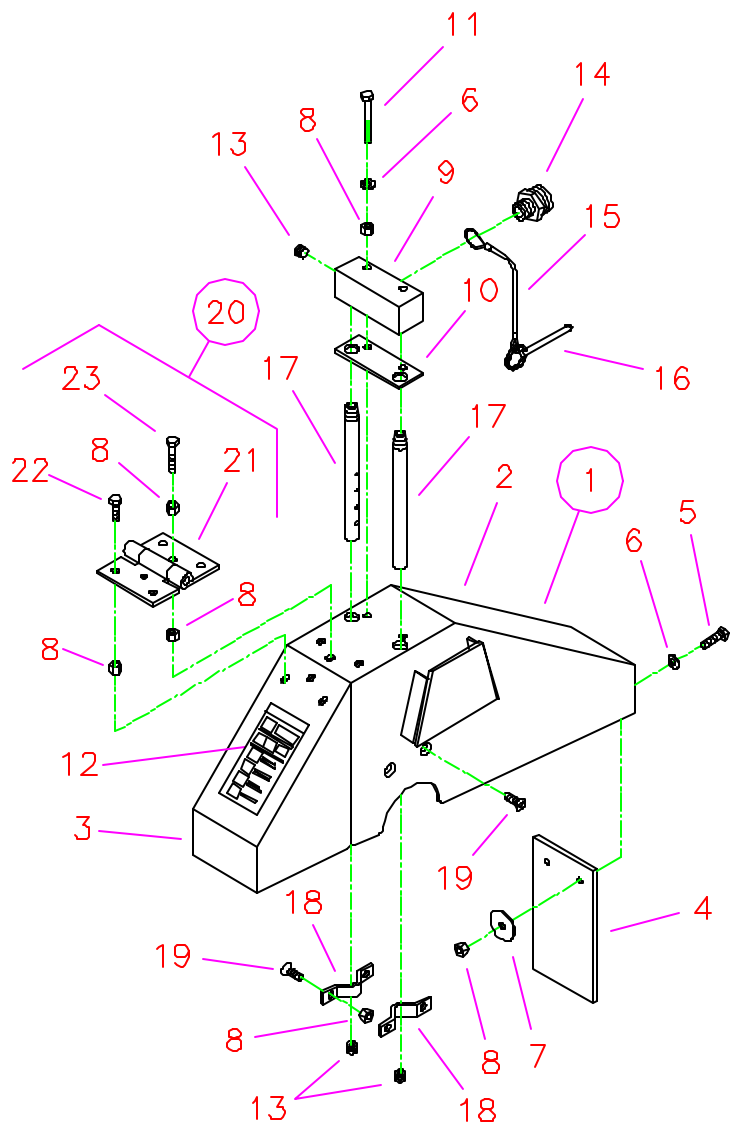
CC6560XL Parts List
Drawing 5
Eaton Transmission Group

Diagram Number	Part No.	Qty. Req.	Description	Diagram Number	Part No.	Qty. Req.	Description
1	6010316	1	Speed Control Lever Assembly (Includes #2 - #11)	38	2900058	5	Flat Washer, 1/2" SAE
				39	2900026	4	Lock Nut, 1/2"-13 Nylon
2	6010314	1	Speed Control Lever Only	40	2500152	6	Rod End, 3/8"-24
3	2501280	1	Control Grip Body	41	2900148	6	Hex Nut, 3/8"-24
4	2501281	1	Control Grip Cover	42	6010065	2	Rod, 3/8"-24 x 3-1/2"
5	2500644	1	Plug, Rectangular	43	6010067	1	Bell Crank
6	2900452	1	Machine Screw, Oval Head, #4 x 5/8"	44	6010066	1	Rod, 3/8"-24 x 7"
7	2800372	1	Pushbutton Switch, Raise	45	2900006	11	Lock Washer, 3/8" Split
8	2800373	1	Pushbutton Switch, Lower	46	6010101	2	Edge Trim
9	2500694	2	Plug, 5/8" Hole	47	6010068	1	Transmission Platform Weldment
10	2900453	1	Setscrew, Soc. Hd., M5 x 12mm	48	2900140	1	Setscrew, Sq. Hd., 5/16"-18 x 1-1/2"
11	2800393	1	Wiring Harness, Hydraulic Pump	49	2900141	1	Hex Nut, 5/16"-18
12	2900047	1	Capscrew, Hex Hd., 3/8"-16 x 1-3/4"	50	2500150	1	Sprocket, 11 Tooth with Setscrew
13	2900014	18	Flat Washer, 3/8" SAE	50A	2900101	1	Setscrew, Soc. Hd., 1/4"-20 x 3/8"
14	2900153	5	Friction Washer, 3/8"	51	2900063	1	Woodruff Key #5, 1/8" Wide x 5/8" Dia.
15	6010055	1	Friction Spacer	52	6010069	1	#40 Chain, 56 Pitch
16	2900018	13	Lock Nut, 3/8"-16 Nylon	53	2500148	1	Sprocket, 45 Tooth
17	6010056	1	Lever Support Weldment	54	2500149	1	Sprocket Bushing with Fasteners
18	2900144	6	Capscrew, Hex Hd., 1/4"-20 x 3/4"	54A	2900056	1	Setscrew, Soc. Hd., 1/4"-20 x 1/4"
19	2900010	8	Lock Nut, 1/4"-20 Nylon	54B	REF	3	Tap Bolt, Hex Hd., 1/4"-20 x 1-3/8"
20	6010057	1	Engagement Lever Weldment	54C	2900024	3	Lock Washer, 1/4" Split
21	2500002	1	Hand Grip	55	6013101	1	Transmission Jackshaft, 11 Tooth
22	2900029	7	Capscrew, Hex Hd., 3/8"-16 x 1-1/2"	56	6048229	1	Key, 3/16" Sq. x 1-1/4"
23	6010058	1	Gate Plate	57	2500159	2	Pillow Block Bearing, 3/4"
24	2600068	1	Hydrostatic Transmission	58	2900005	4	Capscrew, Hex Hd., 3/8"-16 x 1"
25	6010059	1	Return Hose, 3/8" I.D. x 19" Long	59	2900033	1	Hex Nut, 3/8"-16
26	3200062	1	Hose Clamp #4	60	2500519	1	Cooling Fan, 7"
27	3200046	2	Fitting, 3/8" Female JIC to 3/8" Push Lock	61	2900448	4	Machine Screw, Hex Hd. #10-32 x 1/2"
28	6010060	1	Oil Recirculation Hose, 3/8" I.D. x 9"	62	2900038	4	Lock Washer, #10 Split
29	6010061	1	Transmission Pulley	63	2900542	1	Tap Bolt, Hex Hd., 1/2"-13 x 3-1/2"
30	2900142	2	Setscrew, Soc. Hd., 5/16"-18 x 3/8"	64	6010166	1	Gate Cover Bar
31	2900143	1	Woodruff Key #61, 3/16" Wide x 5/8" Dia.	65	2501339	1	Rubber Support Mount
32	2501217	1	V-Belt, 4L-380	66	2900008	2	Capscrew, Hex Hd., 1/4"-20 x 1"
33	6010027	1	Mount Foot, Right Hand	67	2900472	1	Capscrew, Hex Flange Hd., 3/8"-16 x 2"
34	2900106	2	Capscrew, Hex Hd., 1/2"-13 x 2"	68	2900474	4	Belleville Washer, 3/8"
35	6010028	1	Mount Foot, Left Hand	69	2900473	1	Flat Washer, 3/8" USS
36	2900035	4	Capscrew, Hex Hd., 3/8"-16 x 3"				
37	6010064	1	Shift Lever				



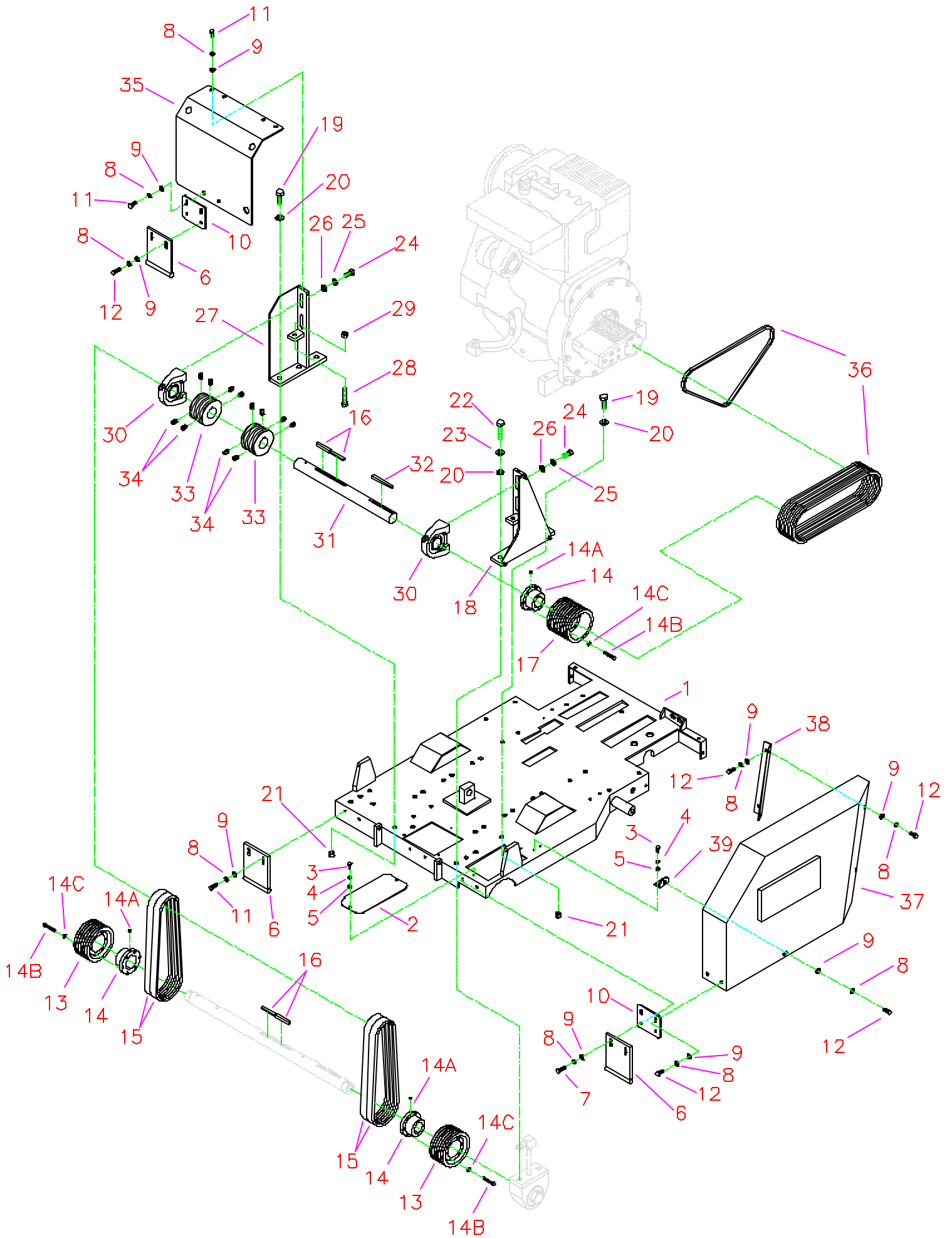
CC6560XL Parts List
Drawing 6
Controls Group

Diagram Number	Part No.	Qty. Req.	Description	Diagram Number	Part No.	Qty. Req.	Description
1	6010213	1	Hydraulic Pump Assy. (Includes #2 - #15)	45	2800182	1	Negative Ground Cable (Black)
2	2600070	1	Hydraulic Pump Unit (Includes #3 - #6)	46	2900024	1	Lock Washer, 1/4" Split
3	2700321	2	Breather Cap, 3/8" NPT	47	6010098	1	Switch Plate
4	2701815	1	Dipstick	48	2900445	6	Tapscrew, Flat Hd., #10-24 x 1/2"
5	2700169	1	Solenoid, Motor	49	2500204	3	Plug, 1/2" Hole
6	2700243	1	Valve Coil	50	6013093	1	Gauge Panel
	2700244	1	Valve Stem		1800348	1	Gauge Panel Decal
7	2900047	2	Capscrew, Hex Hd., 3/8"-16 x 1-3/4"	51	2900021	4	Tapscrew, Pan Hd., #10-24 x 3/8"
8	2900006	2	Lock Washer, 3/8" Split	52	2500376	1	Vernier Throttle Cable
9	2900014	5	Flat Washer, 3/8" SAE	53	2800168	1	Blade Shaft Tach/Hour Meter
10	3200120	1	Pipe Coupling, 3/8" NPT	54	2800267	1	Light, Wedge Base
11	3200123	1	Pipe Nipple, 3/8" NPT x 2"	55	2700783	1	Ignition Switch with Key
12	3200115	1	Elbow, 3/8" O-Ring to 1/4" Female Pipe	56	2701261	1	Ignition Key Only
13	3200060	1	Hex Nipple, 1/4" NPT	57	2700784	1	Engine Temperature Gauge
14	3200056	1	Flow Control Valve, 1/4" NPT	58	2700786	1	Oil Pressure Light (Green)
15	3200057	2	Elbow, 1/4" Male Pipe to 1/4" Male JIC		2700923	1	(Bulb Only)
16	6010215	1	Depth Stop Assembly (Includes #17 - #27)	59	2700787	1	Oil Temperature Light (Red)
17	6010097	1	Depth Stop Weldment		2700923	1	(Bulb Only)
18	2900133	1	Wave Washer	60	2700785	1	Alternator Light (Orange)
19	2900058	1	Flat Washer, 1/2" SAE		2700923	1	(Bulb Only)
20	2900239	1	Friction Washer, 1/2"	61	2500650	1	Fuel Tank, 9 Gallon
21	6010095	1	Depth Stop Knob	62	2500649	1	Fuel Tank Cap with Gauge
22	2900132	1	Roll Pin, 3/16" x 1-1/4"	63	2500205	1	Fuel Tank Grommet
23	2900158	1	Yoke, 1/2"-13	64	6010257	2	Fuel Tank Mount Bar
24	2900084	1	Lock Washer, 1/2" Split	65	2900019	4	Capscrew, Hex Hd., 5/16"-18 x 3/4"
25	2900037	1	Hex Nut, 1/2"-13	66	2900031	8	Lock Washer, 5/16" Split
26	2900007	1	Clevis Pin, 1/2" Dia. x 1-3/8"	67	2900022	8	Flat Washer, 5/16" SAE
27	2900004	1	Cotter Pin, 1/8" x 1"	68	2900138	4	Capscrew, Hex Hd., 5/16"-18 x 1"
28	6010214	1	Depth Indicator Assembly (Includes #9, #29 - #42)	69	3200108	1	Fuel Shut-off Valve
				70	3200012	1	Street Elbow, 1/4" NPT
29	6010092	1	Depth Indicator Mount Bracket	71	3200202	1	Fitting, 1/4" Male Pipe to 5/16" Push Lock
30	2900144	3	Capscrew, Hex Hd., 1/4"-20 x 3/4"	72	6013095	1	Fuel Line Hose, 5/16" I.D. x 4" Long
31	2900010	4	Lock Nut, 1/4"-20 Nylon	73	2500474	1	Fuel Filter, 5/16" with Clamps
32	2500155	2	Cable Pulley, 1-1/4"	74	6013096	1	Fuel Line Hose, 5/16" I.D. x 28" Long
33	2900008	2	Capscrew, Hex Hd., 1/4"-20 x 1"	75	3200062	2	Hose Clamp #4
34	6010091	1	Depth Indicator Pointer	76	3200091	1	Fitting, 1/4" Female JIC to 1/4" Push Lock
35	2900079	1	Capscrew, Hex Hd., 3/8"-16 x 2-1/4"	77	6010103	1	Fuel Line Hose, 1/4" I.D. x 28" Long
36	2500145	1	Flange Bearing, 3/8"	78	3200116	1	Elbow, 1/4" O-Ring to 3/8" Male JIC
37	6010093	1	Cable Pulley, 2"	79	3200046	1	Fitting, 3/8" Female JIC to 3/8" Push Lock
38	2900018	1	Lock Nut, 3/8"-16 Nylon	80	2800388	1	Fuse Panel, 6 Circuit
39	6010094	1	Depth Indicator Cable with Crimp, 48"	81	2800389	6	Fuse, 10 Amp Red ATO/ATC
40	2500196	1	Spring, 3/8" x 15"	82	2900451	2	Capscrew, Soc. Hd., #10-24 x 1-1/4"
41	2900055	1	Cotter Pin, 3/16" x 1"	83	2900016	2	Flat Washer, #10 USS
42	2500214	1	Cable Clamp	84	2900017	2	Lock Nut, #10-24 Nylon
43	3200054	1	Hydraulic Hose Assembly, 32" Long	85	2501434	1	Hose Clamp, 1/2" Dia. x 3/4" Wide
44	2800095	1	Solenoid Cable (Red)				



CC6560XL Parts List
Drawing 7
Blade Guard Assembly

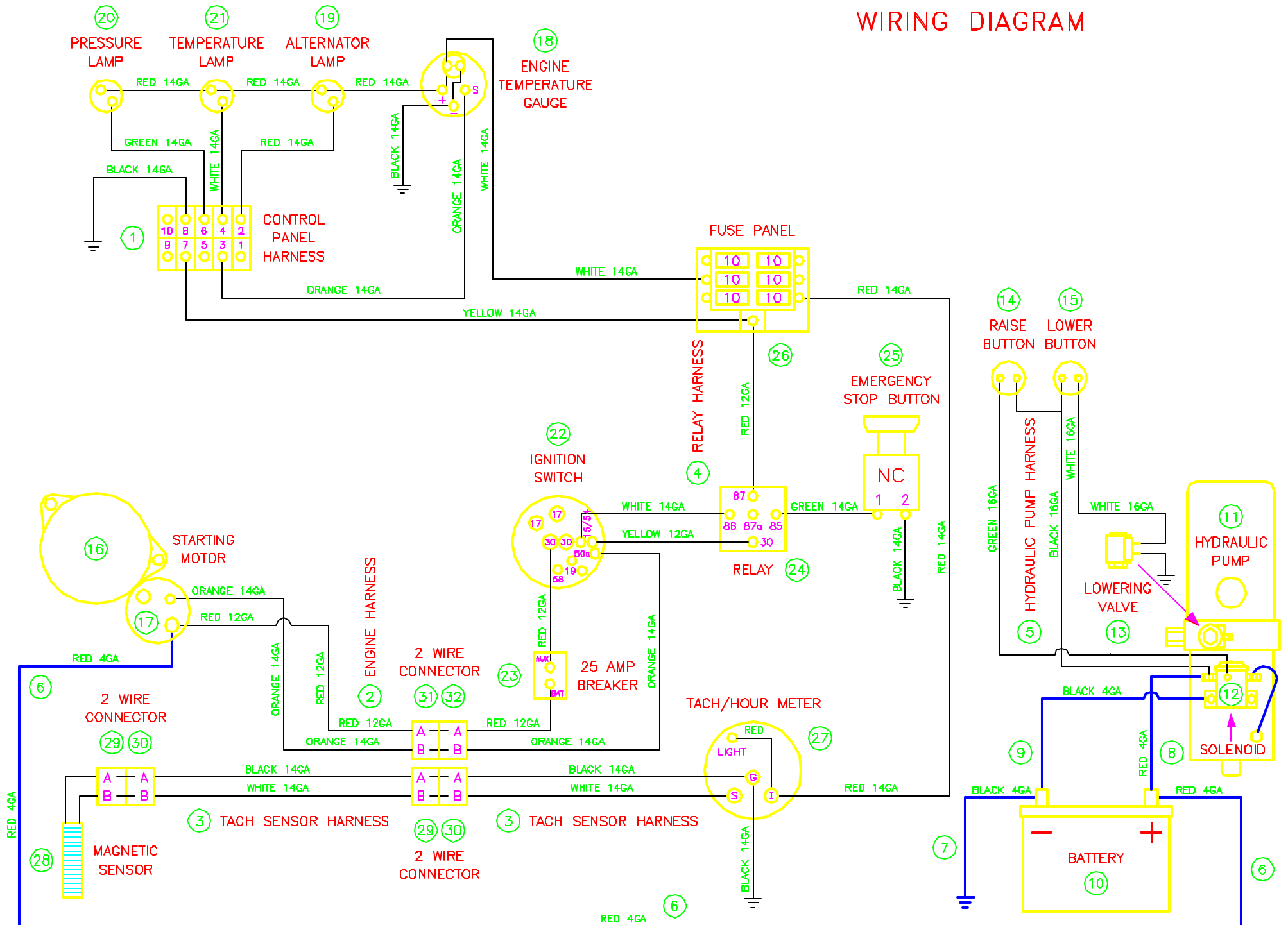
Diagram Number	Part No.	Qty. Req.	Description	Diagram Number	Part No.	Qty. Req.	Description
1	6010600	1	14" Blade Guard Assembly (Includes #2 - #23)	15	2900278	1	Lanyard with Lock Pin for 14" & 20" Blade Guards
	6010602	1	20" Blade Guard Assembly (Includes #2 - #22)		2900279	1	Lanyard with Lock Pin for 26" & 30" Blade Guards
	6010604	1	26" Blade Guard Assembly (Includes #2 - #19, #24, #34)		2900280	1	Lanyard with Lock Pin for 36" Blade Guard
	6010606	1	30" Blade Guard Assembly (Includes #2 - #19, #24, #34)	16	2900156	1	Lock Pin Only
	6010608	1	36" Blade Guard Assembly (Includes #2 - #19, #24 - #34)	17	6048283	2	Water Tube for 14" Blade Guard
2	6010601	1	14" Blade Guard Front & Rear Only		6010085	2	Water Tube for 20" Blade Guard
	6010603	1	20" Blade Guard Front & Rear Only		6010086	2	Water Tube for 26" Blade Guard
	6010605	1	26" Blade Guard Front & Rear Only	18	6048155	2	Water Tube for 30" Blade Guard
	6010607	1	30" Blade Guard Front & Rear Only	19	2900020	4	Water Tube for 36" Blade Guard
	6010609	1	36" Blade Guard Front & Rear Only	20	6048150	1	Water Tube Clamp
3	6010304	1	14" Blade Guard Front Only				4 Capscrew, Flat Hd., 1/4"-20 x 3/4"
	6010305	1	20" Blade Guard Front Only		6010251	1	Hinge Assembly for 14" Blade Guard (Includes #8, #21 - #23)
	6010306	1	26" Blade Guard Front Only				Hinge Assembly for 20" Blade Guard (Includes #8, #21, #22)
	6010307	1	30" Blade Guard Front Only	21	2500270	1	Hinge Only
	6010308	1	36" Blade Guard Front Only	22	2900144	6	Hinge Assembly for 26"-36" Blade Guards (Includes #25 - #30)
4	6010081	1	Splash Flap	23	2900052	1	Capscrew, Hex Hd., 1/4"-20 x 1-1/4"
5	2900008	2	Capscrew, Hex Hd., 1/4"-20 x 1"	24	6010560	1	Hinge Assembly for 26"-36" Blade Guards (Includes #25 - #30)
6	2900009	4	Flat Washer, 1/4" SAE	25	6010549	1	Hinge Only
7	2900083	2	Fender Washer, 1/4" x 1-1/4"	26	2900479	1	Capscrew, Hex Hd., 3/4"-10 x 4"
8	2900010	15	Lock Nut, 1/4"-20 Nylon	27	2900467	1	Lock Nut, 3/4"-10 Nylon
9	6010261	1	Manifold for 14" - 30" Blade Guards	28	2900005	6	Capscrew, Hex Hd., 3/8"-16 x 1"
	6010264	1	Manifold for 36" Blade Guard	29	2900006	6	Lock Washer, 3/8" Split
10	2500830	1	Manifold Gasket	30	2900014	6	Flat Washer, 3/8" SAE
11	2900294	2	Capscrew, Hex Hd., 1/4"-20 x 2"	31	2900291	1	Capscrew, Hex Hd., 5/8"-18 x 4"
12	1800001	1	Warning Label	32	2900113	1	Lock Washer, 5/8" Split
13	3200001	3	Pipe Plug, 1/8" NPT	33	2900002	1	Flat Washer, 5/8" SAE
14	3200002	1	Fitting, 3/4" Male Garden Hose to 3/8" Male Pipe	34	2900024	2	Lock Washer, 1/4" Split
				35	6010511	1	Blade Guard Brace for 30" & 36"



CC6560XLJ Parts List
Drawing 8
Jackshaft Group

Diagram Number	Part No.	Qty. Req.	Description	Diagram Number	Part No.	Qty. Req.	Description
1	6010599	1	Frame Base	19	2900147	4	Capscrew, Hex Hd., 5/8"-11 x 1-3/4"
2	6010585	1	Sheave Cover Plate	20	2900002	6	Flat Washer, 5/8" SAE
3	2900019	4	Capscrew, Hex Hd., 5/16"-18 x 3/4"	21	2900135	4	Lock Nut, 5/8"-11 Nylon
4	2900031	4	Lock Washer, 5/16" Split	22	2900527	2	Capscrew, Hex Hd., 5/8"-11 x 2-1/2"
5	2900022	4	Flat Washer, 5/16" SAE	23	2900113	2	Lock Washer, 5/8" Split
6	6010548	3	Skid Plate	24	2900025	4	Capscrew, Hex Hd., 1/2"-13 x 1-1/4"
7	2900013	2	Capscrew, Hex Hd., 3/8"-16 x 1-1/4"	25	2900084	4	Lock Washer, 1/2" Split
8	2900006	17	Lock Washer, 3/8" Split	26	2900058	4	Flat Washer, 1/2" SAE
9	2900014	17	Flat Washer, 3/8" SAE	27	6010567	1	Jackshaft Mount R.H.
10	6010572	2	Guard Attachment Plate	28	2900541	2	Tap Bolt, Hex Hd., 1/2"-13 x 2-3/4"
11	2900196	6	Capscrew, Hex Hd., 3/8"-16 x 3/4"	29	2900129	1	Jam Nut, 1/2"-13
12	2900005	9	Capscrew, Hex Hd., 3/8"-16 x 1"	30	2501149	2	Pillow Block Bearing, 1-3/4"
13	2501438	2	Sheave, 5.60-6 Groove QD Style	31	6010569	1	Jackshaft
14	2500176	3	Bushing, 1-3/4" QD with Fasteners	32	4645006	1	Key, 3/8" Sq. x 4"
14A	2900056	3	Setscrew, Soc. Hd., 1/4"-20 x 1/4"	33	6011010	2	Sheave, 4.12-6 Groove x 1-3/4" Bore
14B	2900289	9	Capscrew, Hex Hd., 5/16"-18 x 2-1/4"	34	2900418	12	Setscrew, Soc. Hd., 5/16"-18 x 5/8"
14C	2900031	9	Lock Washer, 5/16" Split	35	6010570	1	Jackshaft Guard
15	2501437	4	Banded Belt, 3/3VX425-3 Strand	36	2500037	11	V-Belt, 3VX375
16	6011058	4	Key, 3/8" Sq. x 2-3/4"	37	6010571	1	Belt Guard
17	2500516	1	Sheave, 5.30-10 Groove QD Style	38	6010556	1	Belt Guard Mounting Bracket 60°
18	6010566	1	Jackshaft Mount L.H.	39	6010558	1	Guard Mounting Tab 90°

WIRING DIAGRAM



CC6560XL Parts List
Drawing 9
Wiring Diagram

Diagram Number	Part No.	Qty. Req.	Description	Diagram Number	Part No.	Qty. Req.	Description
1	2800396	1	Control Panel Harness	23	2800387	1	Circuit Breaker, 25 Amp
2	2800429	1	Engine Harness (Includes #31 & #32)		2800364	1	Circuit Breaker Boot, Red
3	2800397	1	Tach Sensor Harness (Includes #29 & #30)	24	2800144	1	Relay
4	2800392	1	Relay Harness		2800263	1	Relay Connector
5	2800393	1	Hydraulic Pump Harness		2800264	4	Wire Terminal, 1/4" Push-on
6	2800073	1	Battery Cable, Positive (Red)	25	2800213	1	Emergency Stop Button
7	2800072	1	Battery Cable, Negative (Black)		2800299	1	Contact Block N.C.
8	2800095	1	Solenoid Cable, Positive (Red)	26	2800388	1	Fuse Panel, 6 Circuit
9	2800182	1	Ground Cable, Negative (Black)		2800389	6	Fuse, 10 Amp Red ATO/ATC
10	2700208	1	Battery, 12 Volt	27	2800168	1	Tach/Hour Meter
11	2600070	1	Hydraulic Pump Unit (Includes #12 & #13)		2800267	1	Light Bulb, Wedge Base
12	2700169	1	Solenoid, Motor	28	2800169	1	Magnetic Sensor (Includes #29)
13	2700243	1	Valve Coil	29	2800145	2	Connector, 2 Wire Shroud
	2700244	1	Valve Stem		2800114	4	Male Terminal, 14/16 Gage Wire
14	2800372	1	Pushbutton Switch, Raise		2800174	4	Cable Seal, Gray
15	2800373	1	Pushbutton Switch, Lower	30	2800146	2	Connector, 2 Wire Tower
16	2701821	1	Starting Motor (Includes #17)		2800115	4	Female Terminal, 14/16 Gage Wire
17	2701823	1	Solenoid Switch		2800174	4	Cable Seal, Gray
18	2700784	1	Engine Temperature Gauge	31	2800145	1	Connector, 2 Wire Shroud
19	2700785	1	Alternator Light (Orange)		2800114	1	Male Terminal, 14/16 Gage Wire
	2700923	1	(Bulb Only)		2800112	1	Male Terminal, 12 Gage Wire
20	2700786	1	Oil Pressure Light (Green)		2800174	1	Cable Seal, Gray
	2700923	1	(Bulb Only)		2800175	1	Cable Seal, Blue
21	2700787	1	Oil Temperature Light (Red)	32	2800146	1	Connector, 2 Wire Tower
	2700923	1	(Bulb Only)		2800115	1	Female Terminal, 14/16 Gage Wire
22	2700783	1	Ignition Switch with Key		2800113	1	Female Terminal, 12 Gage Wire
	2701261	1	(Ignition Key Only)		2800174	1	Cable Seal, Gray
					2800175	1	Cable Seal, Blue

**CC6560XL Parts List
Drawing 10
Options Wiring Diagram**

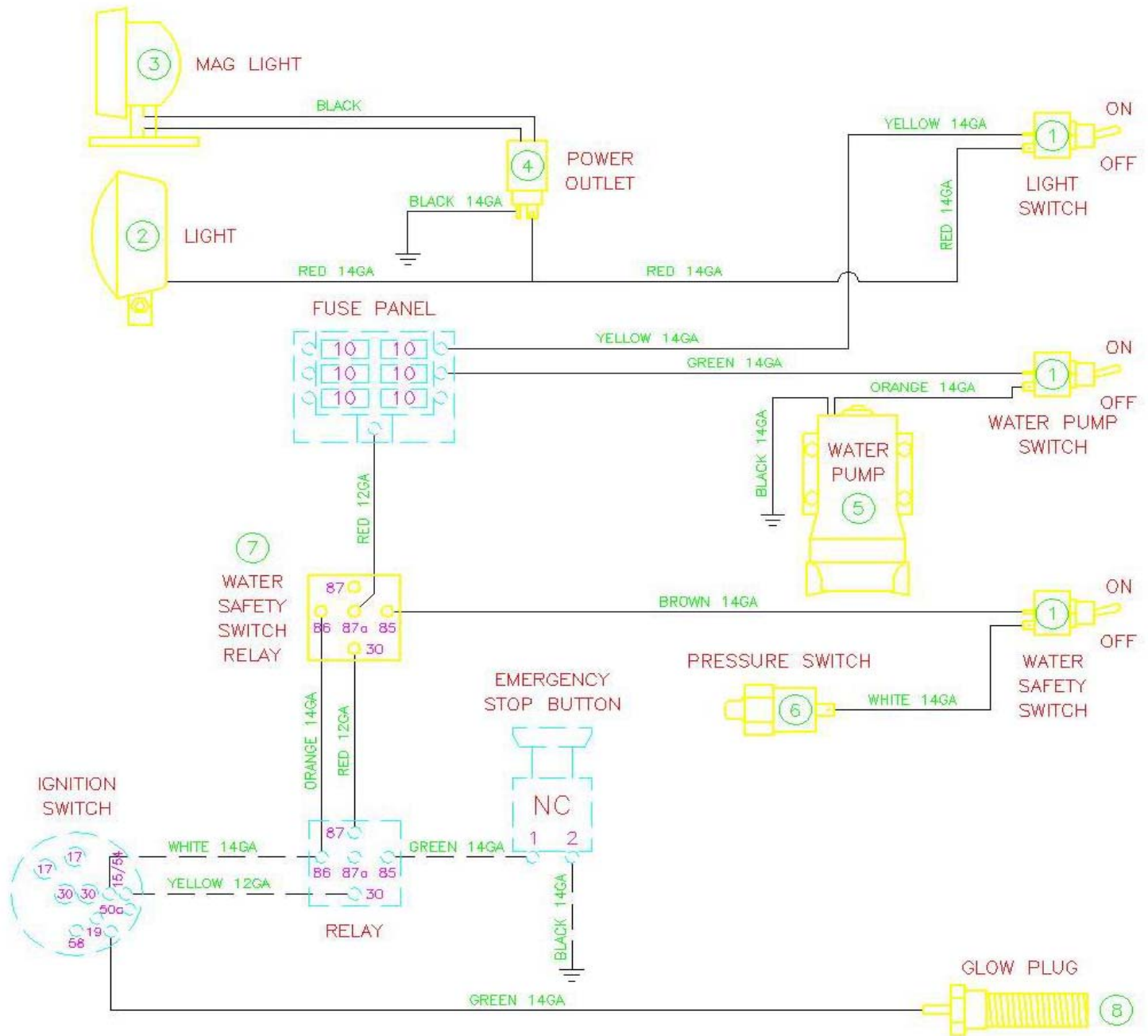
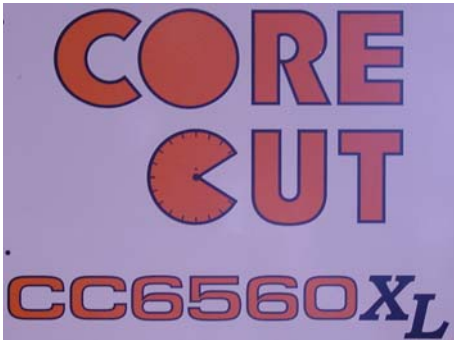
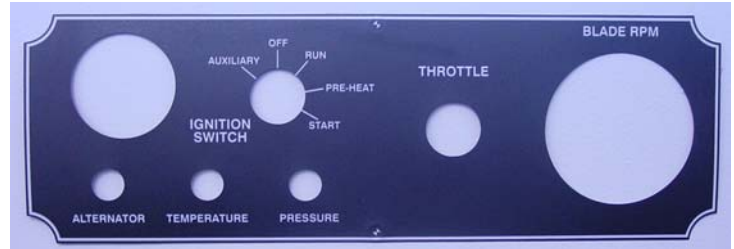


Diagram Number	Part No.	Qty. Req.	Description	Diagram Number	Part No.	Qty. Req.	Description
1	2800062	3	Toggle Switch	5	2600200	1	Water Pump, Diaphragm
	2800063	3	Switch Boot	6	2800060	1	Water Pressure Safety Switch
2	2500194	1	Spot Light, 12 Volt	7	2800144	1	Relay
3	2501087	1	Magnetic Base Light, 12 Volt		2800263	1	Relay Connector
4	2800374	1	Power Outlet, 12 Volt		2800264	4	Wire Terminal, 1/4' Push-on
	2800375	1	Outlet Cap	8	2701698	1	Glow Plug

**CC6560XL Parts List
Drawing 11
Decal Group**



CORE CUT DECAL
CC6560XL #1800652 (Qty 3)
CC6560XLJ #1800653 (Qty 3)



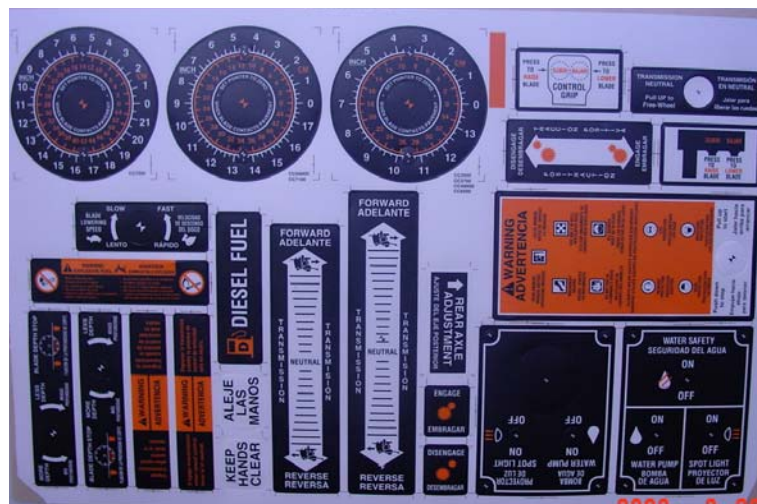
INSTRUMENT PANEL DECAL
#1800348



RPM CHART DECAL
#1800583



WARNING DECAL
#1800001



SAW LABELS SHEET
#1800351

Blade / Engine Speed (RPM) Chart Model CC6560XL Concrete Saw

WARNING: Do not exceed bladeshaft speed (RPM) shown for each blade size. Excessive blade speed could result in blade breakage and serious personal injury.

Blade Size	Max. Depth of Cut	Blade Size	Bladeshaft		Engine	
			No Load RPM	Sheave Size	No Load RPM	Sheave Size
20"	7-5/8"					
26"	10-3/8"	20"	2,400	4.50"	3,000	3.60"
30"	11-3/4"	26"	2,150	5.00"	3,000	3.60"
36"	14-3/4"	30"	1,800	6.00"	3,000	3.60"
		36"	1,500	6.00"	2,500	3.60"

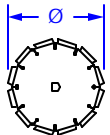
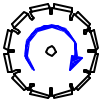
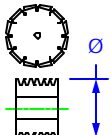
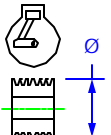

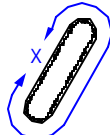
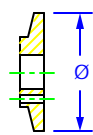
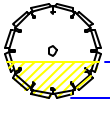
CAUTION: When changing blade size, use chart shown below for selecting items that must be changed.

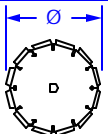
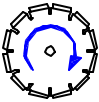
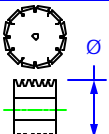
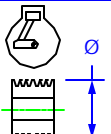

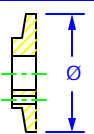
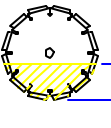
Model CC6560XL	20"	26"	30"	36"
Blade Guard Assembly	6010602	6010604	6010606	6010608
Bladeshaft Sheave, 1-3/4" Bore (Sheave Size)	6010545 (4.50")	6010573 (5.00")	6013046 (6.00")	6013046 (6.00")
Engine Belts (10) (Belt Size)	2500371 (3VX500)	2500371 (3VX500)	2501009 (5/3VX530)	2501009 (5/3VX530)
Inner Flanges (Flange Size)	6010036 (4.50")	6010255 (5.00")	6010038 (6.00")	6010038 (6.00")
Outer Flange (Flange Size)	6010037 (4.50")	6047907 (5.00")	6010039 (6.00")	6010039 (6.00")

Options Available:

- #6011032 Water Pump Kit - Includes 12 Volt Pump, Toggle Switch, Hose and Fittings.
- #6010112 Spotlight Kit - Includes 12 Volt Light, Mounting Bar and Bracket, Lock Knobs, Toggle Switch.
- #6010522 Water Safety Switch Kit - Includes Safety Shut-off Switch, Relay, and Toggle Switch.
- #6010179 Free Wheeling Clutch Kit - Includes Clutch Sprocket and Hub, Engage/Disengage Lever, Linkage.
- #6010227 Lowering Speed Metering Valve Kit - Includes Metering Valve, Check Valve, Hydraulic Hose & Fittings.
- #6011170 Magnetic Spotlight Kit - Includes 12 Volt Light with Magnetic Base, Power Outlet, Toggle Switch.
- #2501226 Catalytic Converter Kit - Includes Catalytic Muffler.
- #6010596 Glow Plug Kit - Includes Glow Plug and Wire Lead.
- #6010630 Blade Stacking Kit (Up to 1-1/2" width) - Includes 4-1/2" Extended Outer Flange, 5" Bolt, 20" Wide Blade Guard.
- #6010631 Blade Spacing Kit (Up to 2" width) - Includes Shaft Extension, 4-1/2" Outer Flange, Nut, 20" Wide Blade Guard.
- #6010632 Blade Spacing Kit (Up to 4" width) - Includes Long Shaft Extension, 4-1/2" Outer Flange, Nut, 20" Extra Wide Blade Guard.
- #6010633 Side Plunge Kit (Up to 6" width) - Includes Bladeshaft, 8" Flanges, and 20" Side Plunge Blade Guard.

⚠ WARNING: Do not exceed blade speed (RPM) shown for each blade size. Excessive blade speed could result in blade breakage and serious personal injury!

CC6560XL RPM CHART							
BLADE SIZE	BLADE RPM	BLADESHAFT SHEAVE	ENGINE SHEAVE	ENGINE RPM	BELT SIZE	FLANGE SIZE	MAX CUT DEPTH
20"	2,400	4.50"	3.60"	3,000	3VX500	4-1/2"	7-5/8"
26"	2,150	5.00"	3.60"	3,000	3VX500	5"	10-3/8"
30"	1,800	6.00"	3.60"	3,000	3VX530	6"	11-3/4"
36"	1,500	6.00"	3.60"	2,500	3VX530	6"	14-3/4"
							

CC6560XLJ RPM CHART						
BLADE SIZE	BLADE RPM	BLADESHAFT SHEAVE	ENGINE SHEAVE	ENGINE RPM	FLANGE SIZE	MAX CUT DEPTH
30"	1,500	5.30"	3.60"	3,000	6"	11-3/4"
36"	1,500	5.30"	3.60"	3,000	6"	14-3/4"
						

EQUIPMENT AND PARTS WARRANTY

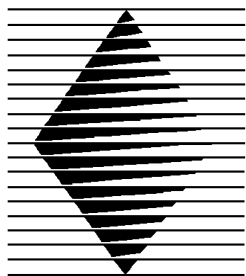
Diamond Products warrants all equipment manufactured by it against defects in workmanship or materials for a period of one (1) year from the date of shipment to Customer.

The responsibility of Diamond Products under this Warranty is limited to replacement or repair of defective parts at Diamond Products' Elyria, Ohio factory, or at a point designated by it, of such parts as shall appear to us upon inspection at such parts, to have been defective in material or workmanship, with expense for transportation and labor borne by Customer.

In no event shall Diamond Products be liable for consequential or incidental damages arising out of the failure of any Product to operate properly.

Integral units such as engines, electric motors, batteries, transmissions, etc., are excluded from this Warranty and are subject to the prime manufacturer's warranty.

THIS WARRANTY IS IN LIEU OF ALL OTHER WARRANTIES, EXPRESSED OR IMPLIED, AND ALL SUCH OTHER WARRANTIES ARE HEREBY DISCLAIMED.



DIAMOND PRODUCTS

333 Prospect Street, Elyria, Ohio 44035
(440) 323-4616 • (800) 321-5336 • Fax (440) 323-8689
www.diamondproducts.com