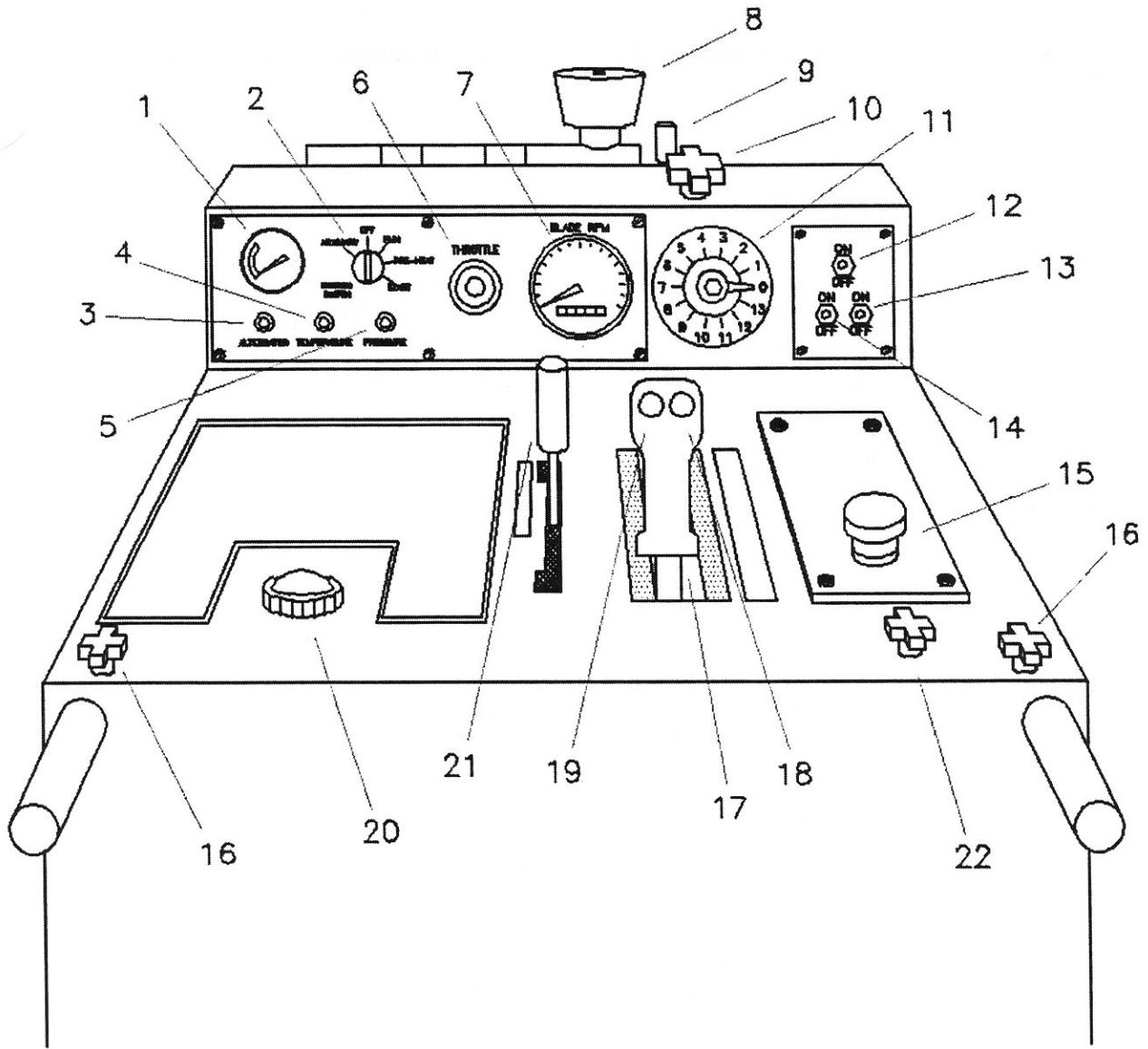


DIAMOND
PRODUCTS

CONCRETE SAW
PARTS LIST

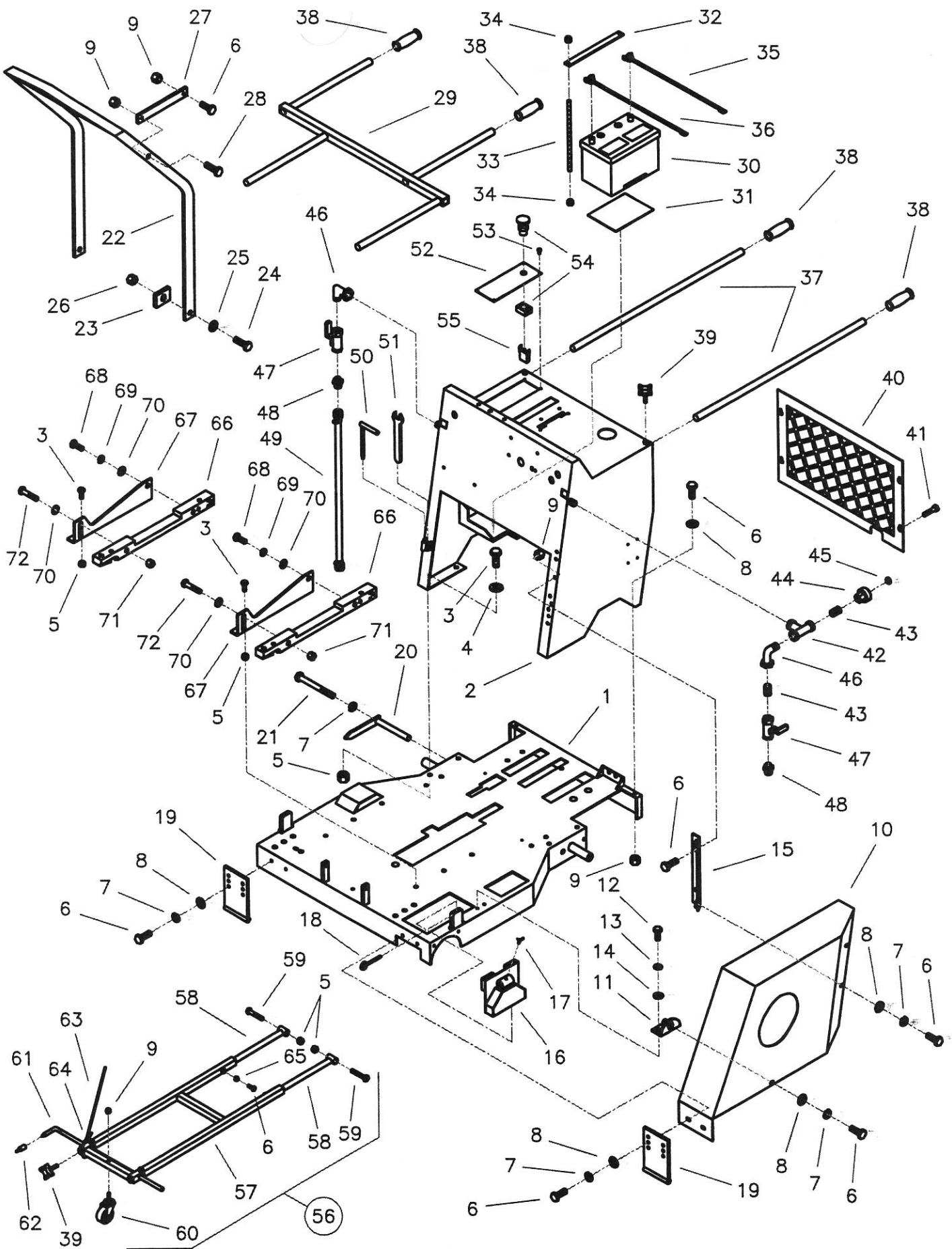
MODEL
CC7100

(REVISED 01-21-02)



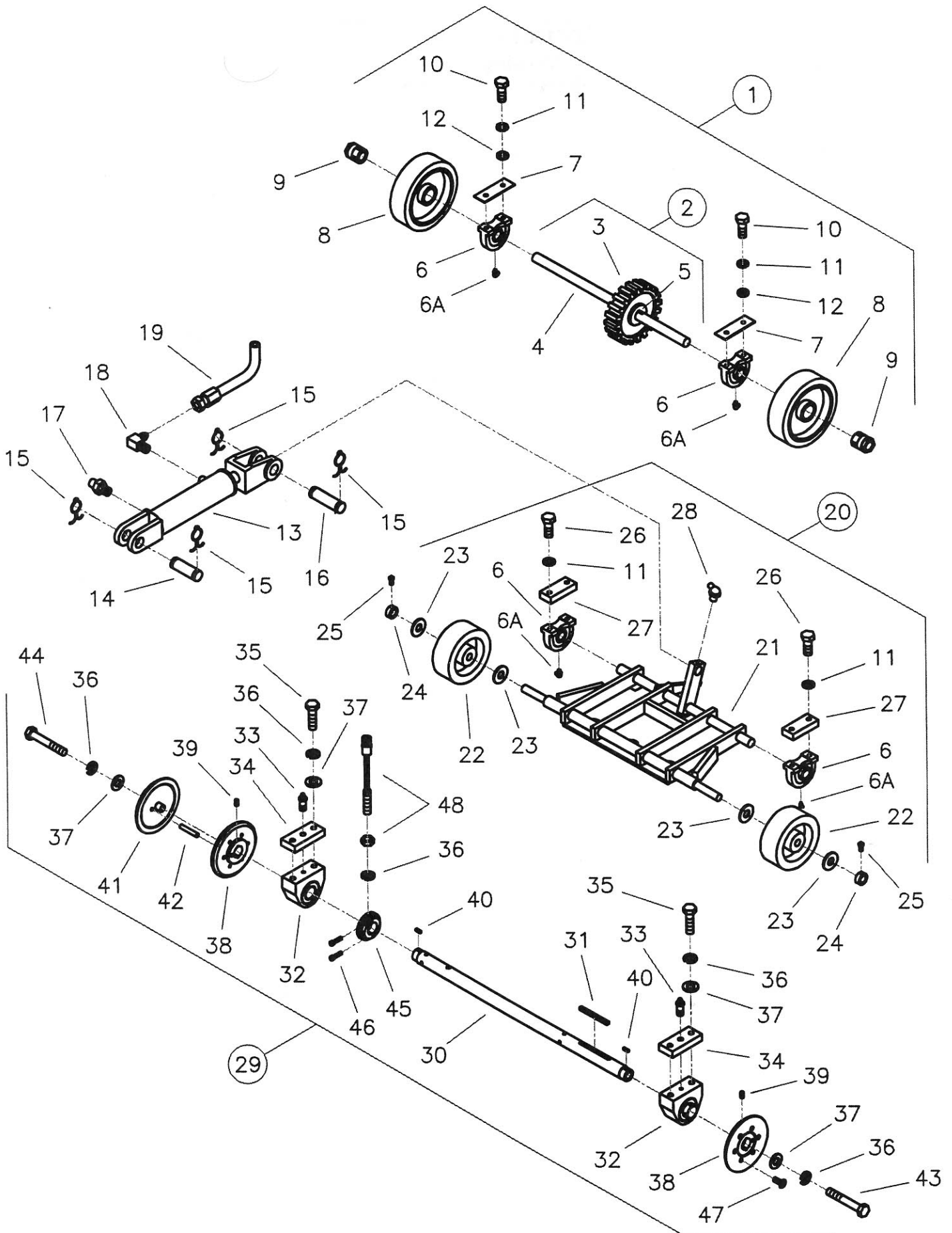
CC7100 Diesel Saw Controls Legend

- | | | | |
|----|-----------------------------------|----|--|
| 1 | Engine Temperature Gauge | 12 | Water Safety Switch (Optional) |
| 2 | Ignition Switch | 13 | Spotlight Switch (Optional) |
| 3 | Alternator Light (Orange) | 14 | Water Pump Switch (Optional) |
| 4 | Oil Temperature Light (Red) | 15 | Emergency Stop Button |
| 5 | Oil Pressure Light (Green) | 16 | Handle Lock Knobs |
| 6 | Vernier Throttle Control | 17 | Speed Control Lever |
| 7 | Blade Tachometer / Hour Meter | 18 | Lower Pushbutton |
| 8 | Pre-Cleaner | 19 | Raise Pushbutton |
| 9 | Air Cleaner Restriction Indicator | 20 | Fuel Tank Cap |
| 10 | Depth Stop Knob | 21 | Transmission Engagement Lever |
| 11 | Cutting Depth Indicator | 22 | Lowering Speed Metering Valve (Optional) |



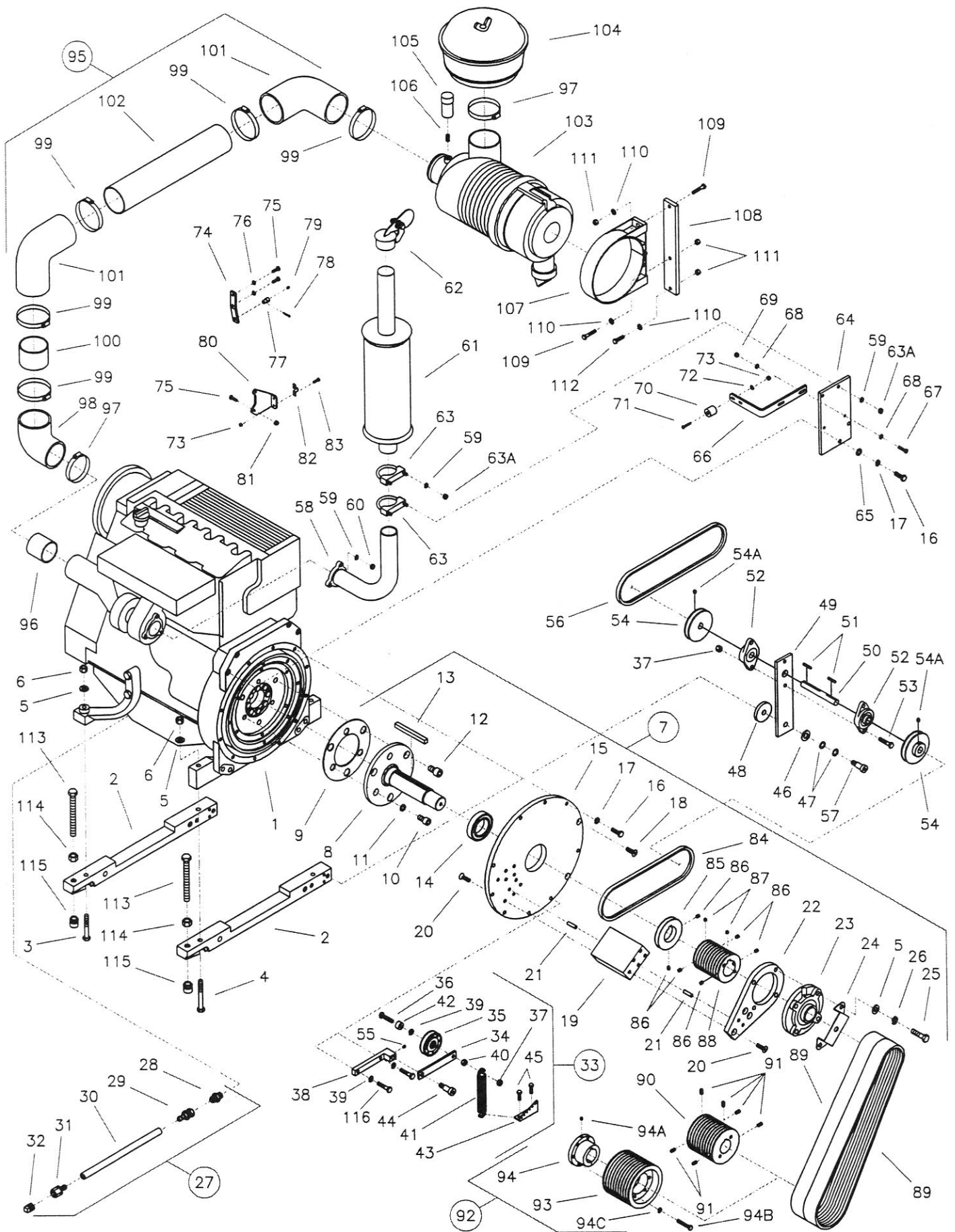
CC7100 Parts List
Drawing I
Frame Group

Diagram Number	Part No.	Qty. Req.	Description	Diagram Number	Part No.	Qty. Req.	Description
1	6013048	1	Frame Base	37	6013054	2	Handle Bar
2	6010001	1	Frame Upright	38	2500636	4	Handle Grip
3	2900025	10	Capscrew, Hex Hd., 1/2"-13 x 1-1/4"	39	2900234	4	Hand Lock Knob, 3/8"-16
4	2900058	4	Flat Washer, 1/2" SAE	40	6010015	1	Rear Cover Screen
5	2900026	12	Lock Nut, 1/2"-13 Nylon	41	2900180	4	Machine Screw, Hex Washer Hd., 1/4"-20 x 1"
6	2900005	15	Capscrew, Hex Hd., 3/8"-16 x 1"	42	3200045	1	Pipe Tee, 1/2" NPT
7	2900006	9	Lock Washer, 3/8" Split	43	3200008	2	Close Nipple, 1/2" NPT
8	2900014	9	Flat Washer, 3/8" SAE	44	3200022	1	Fitting, 1/2" Female Pipe to 3/4" Female Garden Hose
9	2900018	9	Lock Nut, 3/8"-16 Nylon	45	3200025	1	Filter Hose Washer
10	6013050	1	Belt Guard	46	3200013	2	Street Elbow, 1/2" NPT
11	6011110	1	Guard Mounting Tab	47	3200027	2	Water Valve
12	2900019	2	Capscrew, Hex Hd., 5/16"-18 x 3/4"	48	3200155	2	Fitting, 1/2" Male Pipe to 3/4" Male Garden Hose
13	2900031	2	Lock Washer, 5/16" Split	49	6010021	1	Hose Assembly, 42" Long
14	2900022	2	Flat Washer, 5/16" SAE	50	2900154	1	Bladeshaft Lock-Pin
15	6013021	1	Belt Guard Mounting Bracket	51	2500211	1	Bladeshaft Wrench, 15/16"
16	6011046	1	Shaft/Flange Guard (Narrow) for 4-1/2" and 6" Diameter Flange	52	6010019	1	Hydraulic Pump Cover Plate
	6011187	1	Shaft/Flange Guard (Wide) for 4-1/2" and 6" Diameter Flanges	53	2900021	4	Tapscrew, Pan Hd., #10-24 x 3/8"
	6013037	1	Shaft/Flange Guard for 8" Dia. Flange	54	2800213	1	Emergency Stop Button
17	2900307	1	Wing Screw, M6 x 16mm	55	2800229	1	Contact Block N.C.
18	2900156	1	Lock Pin	2800214	1	Contact Block N.O. (Other Models)	
19	6013038	2	Skid Plate	56	6013056	1	Front Pointer Assembly
20	6013024	2	Rear Pointer	57	6011201	1	Front Pointer Frame
21	2900232	2	Capscrew, Hex Hd., 3/8"-16 x 7"	58	6011152	2	Front Pointer Arm
22	6013051	1	Frame Lift	59	2900105	2	Capscrew, Hex Hd., 1/2"-13 x 2-3/4"
23	6013053	2	Frame Lift Spacer	60	2501199	1	Caster, Threaded Stem
24	2900465	2	Capscrew, Hex Hd., 3/4"-10 x 2-1/4"	61	6013025	1	Front Pointer Rod
25	2900003	2	Flat Washer, 3/4" SAE	62	2500740	1	Pointer Cap
26	2900467	2	Lock Nut, 3/4"-10 Nylon	63	6013055	1	Pointer Cable
27	6013052	2	Frame Lift Brace	64	3200221	3	Cable Clamp
28	2900013	2	Capscrew, Hex Hd., 3/8"-16 x 1-1/4"	65	2900033	2	Hex Nut, 3/8"-16
29	6013088	1	Offset Handlebar	66	6013008	2	Engine Support Leg
30	2700208	1	Battery, 12 Volt	67	6013034	2	Engine Mount
31	6010016	1	Battery Pad	68	2900147	2	Capscrew, Hex Hd., 5/8"-11 x 1-3/4"
32	6010017	1	Battery Top Brace	69	2900113	2	Lock Washer, 5/8" Split
33	6010018	2	Rod, 1/4"-20 x 8-1/2"	70	2900002	4	Flat Washer, 5/8" SAE
34	2900010	4	Lock Nut, 1/4"-20 Nylon	71	2900135	2	Lock Nut, 5/8"-11 Nylon
35	2800073	1	Battery Cable, Positive (Red)	72	2900195	2	Capscrew, Hex Hd., 5/8"-11 x 3"
36	2800072	1	Battery Cable, Negative (Black)				



CC7100 Parts List
Drawing II
Blade Shaft and Axles Group

Diagram Number	Part No.	Qty. Req.	Description	Diagram Number	Part No.	Qty. Req.	Description
1	6010280	1	Rear Axle Assembly (Includes #2 - #12)	29	6013075	1	Blade Shaft Assembly with 4-1/2" Diameter Flanges (Includes #30 - #46)
2	6010279	1	Rear Axle Weldment (Includes #3 - #5)				
3	6010284	1	Wheel Drive Gear, 68 Tooth (New Models)	6013076	1	Blade Shaft Assembly with 6" Diameter Flanges (Includes #30 - #46)	
	2500146	1	Wheel Drive Gear, 84 Tooth (Old Models)	6013077	1	Blade Shaft Assembly with 8" Diameter Flanges (Includes #30 - #47)	
4	6010278	1	Rear Axle	30	6013049	1	Blade Shaft, 1-3/4" Diameter
5	6010169	1	Key, 1/4" Sq. x 1-1/4"	31	6010034	1	Key, 3/8" Sq. x 5"
6	2500158	4	Pillow Block Bearing 1-1/4"	32	2500151	2	Blade Shaft Bearing 1-3/4"
6A	2900061	4	Grease Fitting, 1/4"-28 x 90°	33	2900264	2	Grease Fitting, 1/8" NPT x 1-3/4"
7	6010024	2	Rear Axle Bearing Spacer, 1/8"	34	6013019	2	Blade Shaft Bearing Spacer, 1"
8	2500873	2	Wheel, 10" Rear with 2" Bore	35	2900524	4	Capscrew, Hex Hd., 5/8"-11 x 2-1/4"
9	2500874	2	Trantorque Bushing, 1-1/4"	36	2900113	7	Lock Washer, 5/8" Split
10	2900139	4	Capscrew, Hex Hd., 1/2"-13 x 1-3/4"	37	2900002	6	Flat Washer, 5/8" SAE
11	2900084	8	Lock Washer, 1/2" Split	38	6010036	2	Inner Flange 4-1/2" for 14" - 26" Blade Guards
12	2900058	4	Flat Washer, 1/2" SAE				
13	2500555	1	Hydraulic Cylinder	6010038	2	Inner Flange 6" for 30" & 36" Blade Guards	
	2501012	1	(Seal Kit)				
14	6010031	1	Cylinder Pin, 3"	6013017	2	Inner Flange 8" for 42" Blade Guard	
15	2900064	4	Hair Pin Cotter, 3/4"	39	2900418	2	Setscrew, Soc. Hd., 5/16"-18 x 5/8" (4 Required for 8" Flanges)
16	6010119	1	Cylinder Pin, 3-1/2"				
17	3200067	1	Cylinder Breather, 1/4" NPT	40	6010040	2	Key, 1/4" Sq. x 13/16" (4 Required for 8" Flanges)
18	3200057	1	Elbow, 1/4" Male Pipe to 1/4" Male JIC				
19	3200054	1	Hydraulic Hose Assembly, 32" Long	41	6010037	1	Outer Flange 4-1/2" with Drive Pin for 14" - 26" Blade Guards
20	6013124	1	Front Axle Assembly (New Models)				
	6013057	1	Front Axle Assembly (Old Models) (Includes #6, #11, #21 - #28)	6010039	1	Outer Flange 6" with Drive Pin for 30" & 36" Blade Guards	
21	6013123	1	Front Axle Weldment (New Models)	6013018	1	Outer Flange 8" with Drive Pin for 42" Blade Guard	
	6013003	1	Front Axle Weldment (Old Models)				
22	2500585	2	Wheel, 8" Front	42	2900197	1	Drive Pin Only, 3/8" Dia. x 2"
	2500673	2	(Roller Bearing and Seals Kit)	43	2900146	1	Capscrew, Hex Hd., 5/8"-11 x 4" Right Hand
23	2900145	4	Flat Washer, 1" USS	44	2900130	1	Capscrew, Hex Hd., 5/8"-11 x 4" Left Hand
24	2500009	2	Set Collar, 1"	45	6010230	1	Shaft Tach Gear, 1-3/4" I.D. Split (New Models)
25	2900431	2	Setscrew, Sq. Hd., 5/16"-18 x 1/2"	6013091	1	Shaft Tach Gear, 2" I.D. Split (Old Models)	
26	2900106	4	Capscrew, Hex Hd., 1/2"-13 x 2"	46	2900089	2	Capscrew, Soc. Hd., 1/4"-28 x 1"
27	6013010	2	Front Axle Bearing Spacer, 1"	47	2900235	6	Capscrew, Flat Hd., 3/8"-16 x 1" for 8" Flange Only
28	2900184	1	Grease Fitting, 1/4"-28 x 45°	48	2800170	1	Magnetic Sensor with Wire Connector and Hex Nut

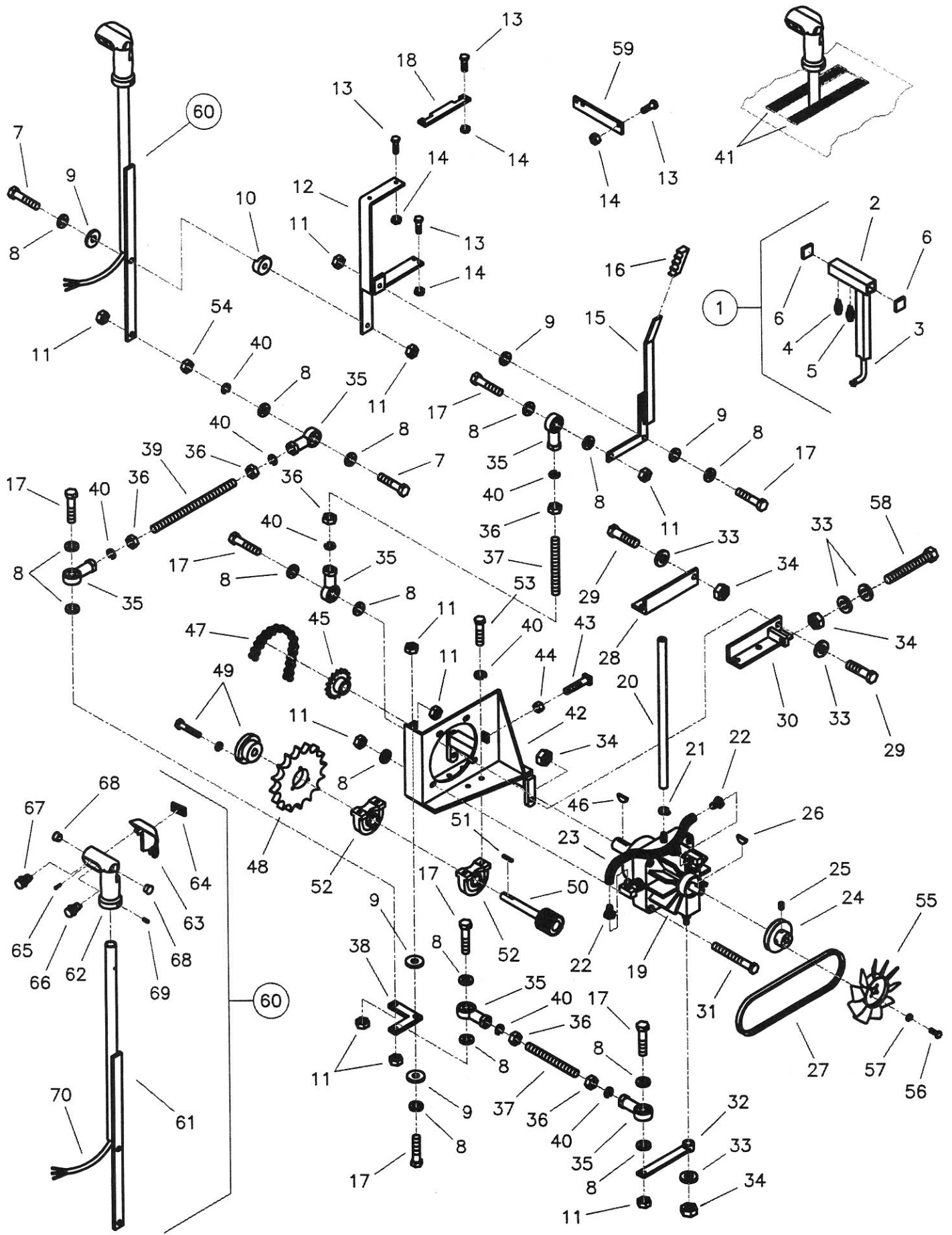


CC7100 Parts List
Drawing III
Engine Group

Diagram Number	Part No.	Qty. Req.	Description	Diagram Number	Part No.	Qty. Req.	Description
1	2600145	1	Engine, Deutz Diesel Model BF4L1011F	41	2501396	1	Spring, 1" Dia. x 6" Long
2	6013008	2	Engine Support Leg	42	2500007	1	Setcollar, 1/2"
3	2900346	2	Capscrew, Hex Hd., M12 x 80mm	43	6011217	1	Idler Spring Bracket
4	2900347	2	Capscrew, Hex Hd., M12 x 100mm	44	2900587	1	Shoulder Screw, 1/2" x 1"
5	2900058	8	Flat Washer, 1/2" SAE	45	2900005	2	Capscrew, Hex Hd., 3/8"-16 x 1"
6	2900327	4	Lock Nut, M12 Nylon	46	2900002	1	Flat Washer, 5/8" SAE
7	6013113	1	PTO Support Assembly (Includes #5, #8 - #26)	47	2900478	2	Bellville Washer, 5/8"
8	6013114	1	PTO Shaft	48	6010538	1	Friction Washer
9	2500938	1	PTO Cushion Ring	49	6010537	1	Jackshaft Mount Plate
10	2900384	3	Capscrew, Soc. Hd., M14 x 25mm	50	6013028	1	Idler Jackshaft
11	2900388	3	Lock Washer, M14 Split (21mm OD)	51	6048229	2	Key, 3/16" Sq. x 1-1/4
12	2900409	3	Capscrew, Soc. Hd., M16 x 25mm	52	2500202	2	Flange Block Bearing, 3/4"
13	6013112	1	Key, 1/2" Square x 5"	53	2900047	2	Capscrew, Hex Hd., 3/8"-16 x 1-3/4"
14	2500925	1	Bearing, 55mm x 90mm x 18mm	54	6013125	2	Pulley, 4" Single Groove with Recess Bore
15	6013106	1	Inner Ring Support	54A	2900142	2	Setscrew, Soc. Hd., 5/16"-18 x 3/8"
16	2900223	10	Capscrew, Hex Hd., M10 x 30mm	55	2900056	1	Setscrew, Soc. Hd., 1/4"-20 x 1/4"
17	2900321	11	Lock Washer, M10 Split	56	2500033	1	V-Belt, 4L-430 for Newer Saws
18	2900368	3	Capscrew, Flat Hd., M10 x 35mm		6013083	1	Link Belt for Older Saws
19	6013107	1	Support Block		2500169	1	(Link Belt Assembly Tool)
20	2900230	6	Capscrew, Flat Hd., 3/8"-16 x 1-1/4"	57	2900477	1	Shoulder Screw, 5/8" x 1"
21	2900067	4	Dowel Pin, 3/8" Dia. x 1-1/4"	58	6013110	1	Exhaust Pipe Weldment
22	6013108	1	Outer Bearing Support	59	2900031	7	Lock Washer, 5/16" Split
23	2500658	1	Flange Cartridge Bearing, 1-3/4"	60	2900343	3	Hex Nut, M8
24	6013122	1	Bearing End Shield	61	2700746	1	Muffler
25	2900106	4	Capscrew, Hex Hd., 1/2"-13 x 2"	62	2700747	1	Rain Cap
26	2900084	4	Lock Washer, 1/2" Split	63	2700748	2	Muffler Clamp with Hex Nuts
27	6013067	1	Oil Drain Hose Assembly (Includes #28 - #32)	63A	2900141	4	Hex Nut, 5/16"-18
28	3200180	1	Fitting, M18 x 1.5 Male to 1/2" Male JIC	64	6013102	1	Exhaust Support Plate
29	3200181	1	Fitting, 1/2" Female JIC to 1/2" Push Lock	65	2900014	4	Flat Washer, 3/8" SAE
30	6013068	1	Oil Drain Hose, 36" Long	66	6010513	1	Pointer Stop
31	3200163	1	Fitting, 1/2" Female Pipe to 1/2" Push Lock	67	2900052	2	Capscrew, Hex Hd., 1/4"-20 x 1-1/4"
32	3200160	1	Plug, 1/2" NPT	68	2900009	4	Flat Washer, 1/4" SAE
33	6013129	1	Idler Assembly (Includes #34 - #45, #55, #116)	69	2900010	2	Lock Nut, 1/4"-20 Nylon
34	6012046	1	Idler Arm	70	2501093	1	Bumper 1"
35	2500074	1	Idler Pulley	71	2900172	1	Machine Screw, Round Hd., #10-24 x 1-1/4"
36	2900521	1	Tap Bolt, 3/8"-16 x 2-1/2"	72	2900016	1	Flat Washer, #10 USS
37	2900018	2	Lock Nut, 3/8"-16 Nylon	73	2900017	3	Lock Nut, #10-24 Nylon
38	6011215	1	Idler Arm Bracket	74	6013029	1	Throttle Arm
39	2900006	3	Lock Washer, 3/8" Split	75	2900310	4	Capscrew, Hex Hd., M6 x 20mm
40	2900033	1	Hex Nut, 3/8"-16	76	2900024	2	Lock Washer, 1/4" Split

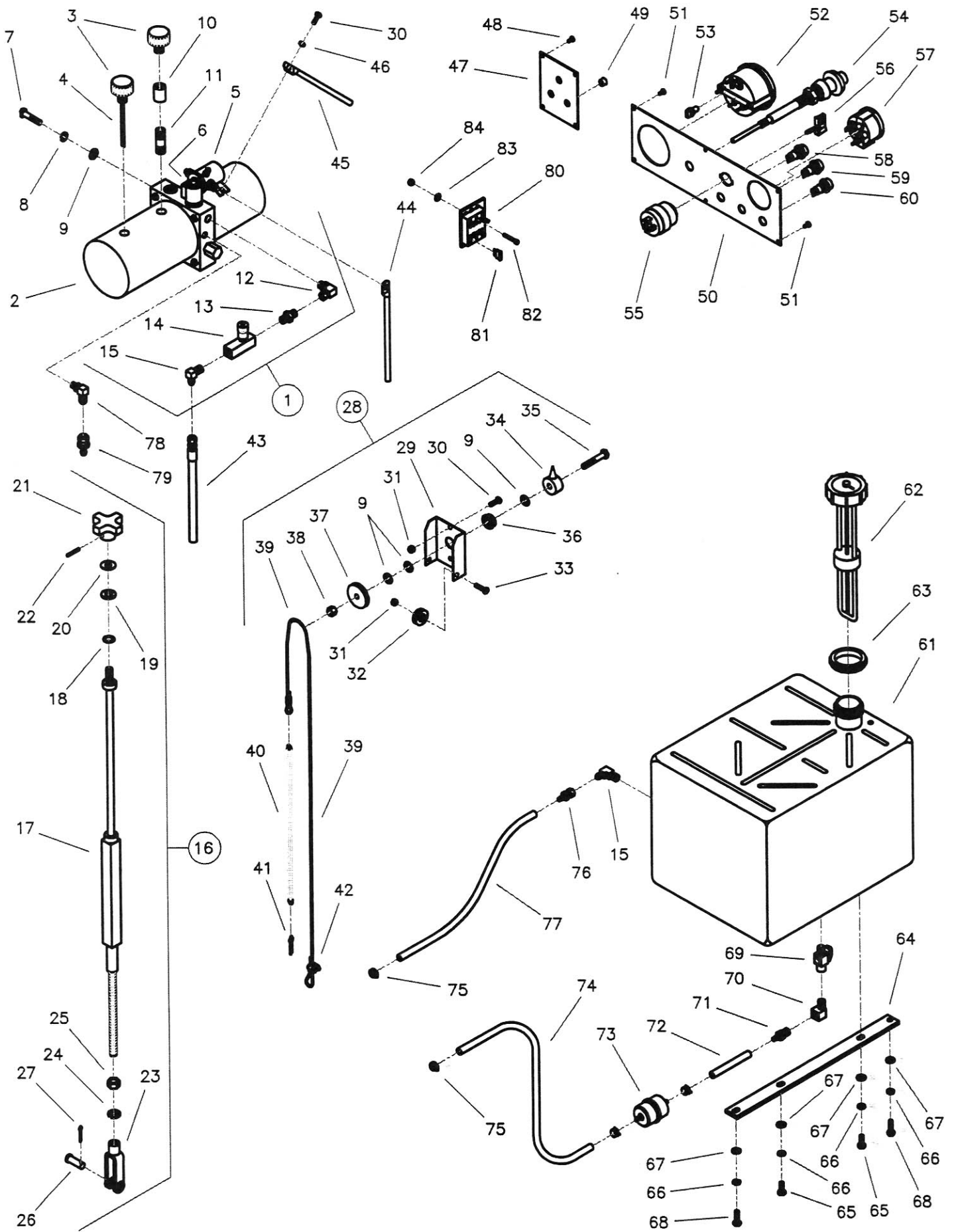
CC7100 Parts List
Drawing III
Engine Group

Diagram Number	Part No.	Qty. Req.	Description	Diagram Number	Part No.	Qty. Req.	Description
77	6048212	1	Pivot Pin	96	6013118	1	Connector Tube, 2-3/4" O.D.
78	2900034	1	Cotter Pin, 3/32" x 3/4"	97	3200197	2	Hose Clamp #52
79	2900059	1	Setscrew, Soc. Hd., #10-32 x 1/4"	98	2500458	1	Hose Elbow, 3" to 3-1/2"
80	6010523	1	Throttle Bracket	99	3200198	5	Hose Clamp #64
81	2900302	2	Lock Nut, M6 Nylon	100	6013069	1	Connector Tube, 3-1/2" O.D.
82	2500940	1	Throttle Cable Clamp	101	2500427	2	Hose Elbow, 3-1/2" I.D.
83	2900015	2	Machine Screw, Hex Hd., #10-24 x 3/4"	102	6013117	1	Air Intake Tube, 3-1/2" O.D. x 18" Long
84	2501217	1	V-Belt, 4L-380 for Newer Saws	103	2501350	1	Air Cleaner, Plastic Style for Newer Saws
	2500456	1	V-Belt, 4L-340 for Older Saws		2500421	1	Air Cleaner, Metal Style for Older Saws
85	6010041	1	Accessory Drive Pulley, 4" O.D.		2501352	1	(Outer Primary Element for Plastic Air Cleaner)
86	2900142	6	Setscrew, Soc. Hd., 5/16"-18 x 3/8"		2500425	1	(Outer Primary Element for Metal Air Cleaner)
87	2900036	2	Setscrew, Soc. Hd., 5/16"-18 x 1/4"		2501353	1	(Inner Safety Element for Plastic Air Cleaner)
88	6010153	1	Sheave, 4.00-10 Groove x 2" Bore for 14", 30", 36" Blade Guards		2500426	1	(Inner Safety Element for Metal Air Cleaner)
	6013009	1	Sheave, 3.65-10 Groove x 2" Bore for 20", 26", 42" Blade Guards		2500239	1	(Rubber Dust Ejector Boot for Newer Plastic Style Air Cleaner)
89	2501365	2	Banded Belt, 3VP500 - 5 Strand for 14" - 26" Blade Guards		2500339	1	(Rubber Dust Ejector Boot for Older Metal Style Air Cleaner)
	2501366	2	Banded Belt, 3VP530 - 5 Strand for 30" - 42" Blade Guards	104	2500422	1	Pre-Cleaner with Clamp
90	6010155	1	Sheave, 4.12-10 Groove x 1-3/4" Bore for 14" Blade Guard		2500504	1	(Clear Plastic Bowl Only)
	6010157	1	Sheave, 4.50-10 Groove x 1-3/4" Bore for 20" and 26" Blade Guards	105	2500423	1	Restriction Indicator
91	2900418	6	Setscrew, Soc. Hd., 5/16"-18 x 5/8"	106	3200117	1	Close Nipple, 1/8" NPT for Plastic Air Cleaner
92	6013046	1	Sheave, 6.00-10 Groove with 1-3/4" QD Bushing for 30" and 36" Blade Guards (Includes #93 and #94)		3200099	1	Street Elbow, 1/8" NPT 45° for Metal Air Cleaner
	6013047	1	Sheave, 6.90-10 Groove with 1-3/4" QD Bushing for 42" Blade Guard (Includes #93 and #94)	107	2501351	1	Mounting Band for Newer Plastic Air Cleaner
93	2500439	1	Sheave Only, 6.00-10 Groove QD Style for 30" and 36" Blade Guards		2500424	2	Mounting Strap for Older Metal Air Cleaner
	2500509	1	Sheave Only, 6.90-10 Groove QD Style for 42" Blade Guard	108	6013126	1	Air Cleaner Mount Bar for Plastic Air Cleaner
94	2500176	1	Bushing, 1-3/4" QD with Fasteners		6013026	2	Air Cleaner Mount Bar for Metal Air Cleaner
94A	2900056	1	Setscrew, Soc. Hd., 1/4"-20 x 1/4"	109	2900538	2	Capscrew, Hex Hd., 5/16"-18 x 1-3/4" for Newer Plastic Style Air Cleaner
94B	2900289	3	Capscrew, Hex Hd., 5/16"-18 x 2-1/4"		2900138	4	Capscrew, Hex Hd., 5/16"-18 x 1" for Older Metal Style Air Cleaner
94C	2900031	3	Lock Washer, 5/16" Split	110	2900022	3	Flat Washer, 5/16" SAE
95	6013065	1	Air Intake Hose Assembly (Includes #96 - #102)	111	2900039	3	Lock Nut, 5/16"-18 Nylon
				112	2900217	1	Capscrew, Hex Hd., 5/16"-18 x 1-1/4" for Newer Plastic Style Air Cleaner
					2900019	2	Capscrew, Hex Hd., 5/16"-18 x 3/4" for Older Metal Style Air Cleaner
				113	2900104	2	Tap Bolt, Hex Hd., 5/8"-11 x 6"
				114	2900112	2	Hex Nut, 5/8"-11
				115	2900446	2	Swivel Pad Nut, 5/8"-11
				116	2900316	2	Capscrew, Hex Hd., M10 x 40mm



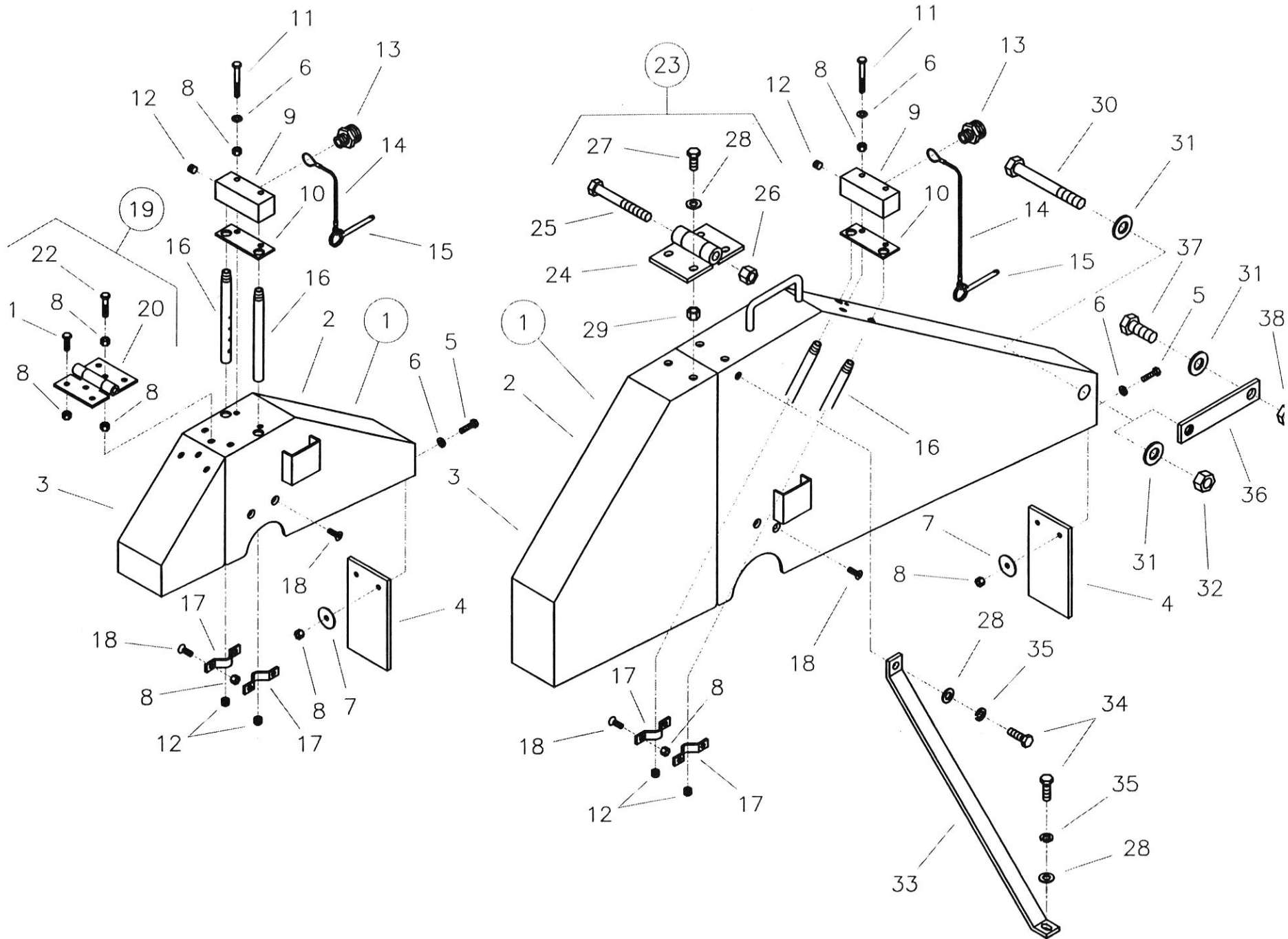
CC7100 Parts List
Drawing IV
Eaton Transmission Group

Diagram Number	Part No.	Qty. Req.	Description	Diagram Number	Part No.	Qty. Req.	Description
1	6010192	1	Speed Control Lever Assembly for Older Saws (Includes #2 - #6)	37	6010065	2	Rod, 3/8"-24 x 3-1/2"
2	6010054	1	Speed Control Lever Only	38	6010067	1	Bell Crank
3	6010108	1	Raise/Lower Wiring Harness	39	6010066	1	Rod, 3/8"-24 x 7"
4	2800167	1	Push Button Switch, Lower	40	2900006	11	Lock Washer, 3/8" Split
5	2800166	1	Push Button Switch, Raise	41	6010101	2	Edge Trim
6	2500206	2	End Plug	42	6010068	1	Transmission Platform Weldment
7	2900047	2	Capscrew, Hex Hd., 3/8"-16 x 1-3/4"	43	2900140	1	Setscrew, Sq. Hd., 5/16"-18 x 1-1/2"
8	2900014	19	Flat Washer, 3/8" SAE	44	2900141	1	Hex Nut, 5/16"-18
9	2900153	5	Friction Washer, 3/8"	45	2500150	1	Sprocket, 11 Tooth with Setscrew
10	6010055	1	Friction Spacer	46	2900063	1	Woodruff Key #5, 1/8" Wide x 5/8" Dia.
11	2900018	13	Lock Nut, 3/8"-16 Nylon	47	6010069	1	#40 Chain, 56 Pitch
12	6010056	1	Lever Support Weldment	48	2500148	1	Sprocket, 45 Tooth
13	2900144	8	Capscrew, Hex Hd., 1/4"-20 x 3/4"	49	2500149	1	Sprocket Bushing with Fasteners
14	2900010	8	Lock Nut, 1/4"-20 Nylon	50	6013101	1	Transmission Jackshaft, 11 Tooth (New Models)
15	6010057	1	Engagement Lever Weldment	6010080	1	Transmission Jackshaft, 15 Tooth (Old Models)	
16	2500002	1	Hand Grip	51	6048229	1	Key, 3/16" Sq. x 1-1/4"
17	2900029	7	Capscrew, Hex Hd., 3/8"-16 x 1-1/2"	52	2500159	2	Pillow Block Bearing, 3/4"
18	6010058	1	Gate Plate	53	2900005	4	Capscrew, Hex Hd., 3/8"-16 x 1"
19	2600068	1	Hydrostatic Transmission	54	2900033	1	Hex Nut, 3/8"-16
20	6010059	1	Return Hose, 3/8" I.D. x 19" Long	55	2500519	1	Cooling Fan, 7"
21	3200062	1	Hose Clamp #4	56	2900448	4	Machine Screw, Hex Hd. #10-32 x 1/2"
22	3200046	2	Fitting, 3/8 Female JIC to 3/8" Push Lock	57	2900038	4	Lock Washer, #10 Split
23	6010060	1	Oil Recirculation Hose, 3/8" I.D. x 9"	58	2900542	1	Tap Bolt, Hex Hd., 1/2"-13 x 3-1/2"
24	6010061	1	Transmission Pulley	59	6010166	1	Gate Cover Bar
25	2900142	2	Setscrew, Soc. Hd., 5/16"-18 x 3/8"	60	6010316	1	Speed Control Lever Assembly for Newer Saws (Includes #61 - #70)
26	2900143	1	Woodruff Key #61, 3/16" Wide x 5/8" Dia.	61	6010314	1	Speed Control Lever Only
27	2500033	1	V-Belt, 4L-430 for Newer Saws	62	2501280	1	Control Grip Body
	6013083	1	Link Belt for Older Saws	63	2501281	1	Control Grip Cover
	2500169	1	(Link Belt Assembly Tool)	64	2500644	1	Plug, Rectangular
28	6010027	1	Mount Foot, Right Hand	65	2900452	1	Screw, Oval Head, #4 x 5/8"
29	2900106	2	Capscrew, Hex Hd., 1/2"-13 x 2"	66	2800372	1	Pushbutton Switch, Raise
30	6010028	1	Mount Foot, Left Hand	67	2800373	1	Pushbutton Switch, Lower
31	2900035	4	Capscrew, Hex Hd., 3/8"-16 x 3"	68	2500694	2	Plug, 5/8" Hole
32	6010064	1	Shift Lever	69	2900453	1	Setscrew, Soc. Hd., M5 x 12mm
33	2900058	5	Flat Washer, 1/2" SAE	70	2800393	1	Wiring Harness, Hydraulic Pump
34	2900026	4	Lock Nut, 1/2"-13 Nylon				
35	2500152	6	Rod End, 3/8"-24				
36	2900148	6	Hex Nut, 3/8"-24				



CC7100 Parts List
Drawing V
Controls Group

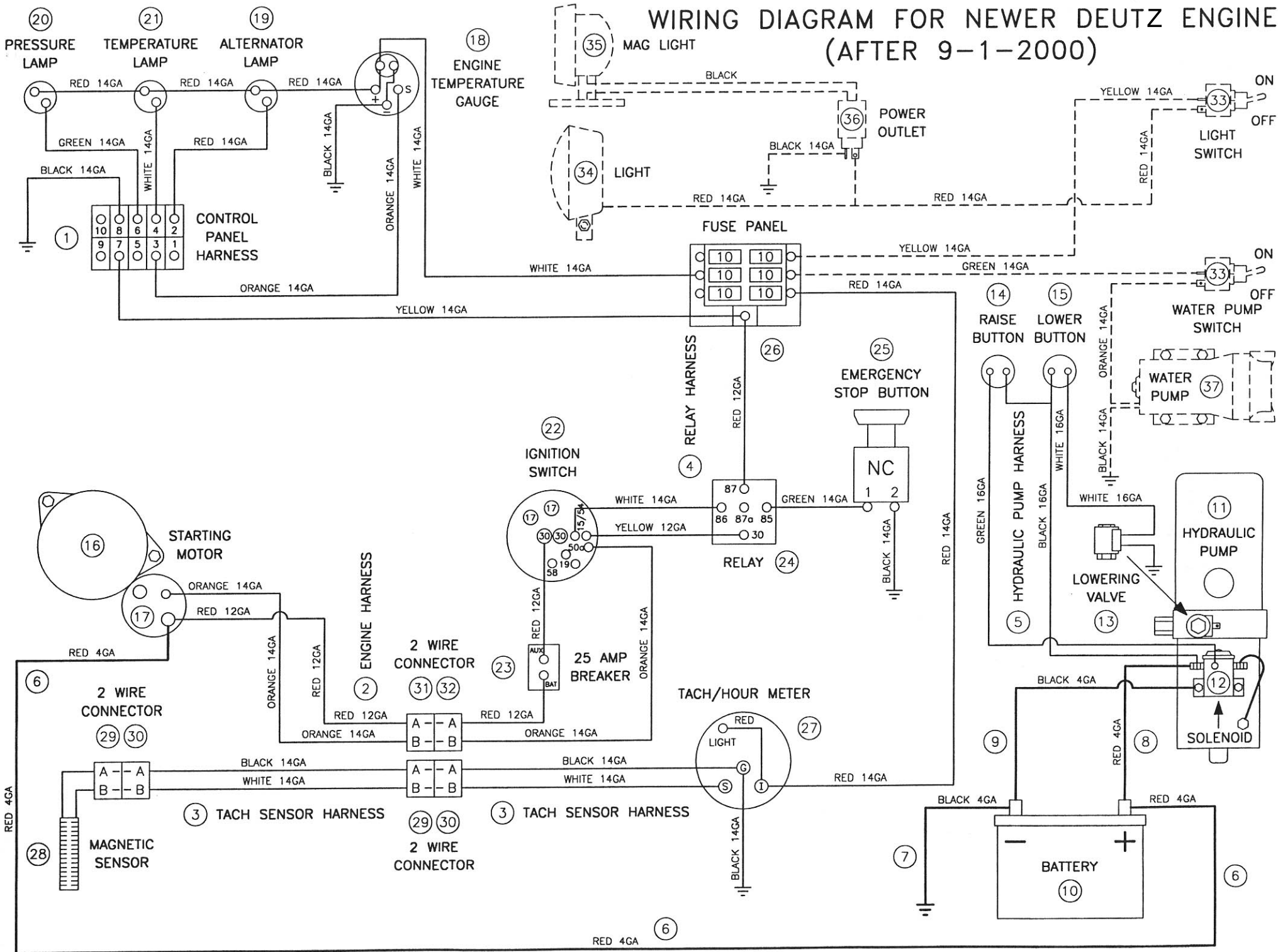
Diagram Number	Part No.	Qty. Req.	Description	Diagram Number	Part No.	Qty. Req.	Description
1	6010213	1	Hydraulic Pump Assy. (Includes #2- #15)	43	3200054	1	Hydraulic Hose Assembly, 32" Long
2	2600070	1	Hydraulic Pump Unit (Includes #3 - #6)	44	2800095	1	Solenoid Cable (Red)
3	2700321	2	Breather Cap, 3/8" NPT	45	2800182	1	Negative Ground Cable (Black)
4	2701815	1	Dipstick	46	2900024	1	Lock Washer, 1/4" Split
5	2700169	1	Solenoid, Motor	47	6010098	1	Switch Plate
6	2700243	1	Valve Coil	48	2900445	6	Tapscrew, Flat Hd., #10-24 x 1/2"
	2700244	1	Valve Stem	49	2500204	3	Plug, 1/2" Hole
7	2900047	2	Capscrew, Hex Hd., 3/8"-16 x 1-3/4"	50	6013093	1	Gauge Panel
8	2900006	2	Lock Washer, 3/8" Split	51	2900021	4	Tapscrew, Pan Hd., #10-24 x 3/8"
9	2900014	5	Flat Washer, 3/8" SAE	52	2800168	1	Blade Shaft Tach/Hour Meter
10	3200120	1	Pipe Coupling, 3/8" NPT	53	2800267	1	Light, Wedge Base
11	3200123	1	Pipe Nipple, 3/8" NPT x 2"	54	2500376	1	Vemier Throttle Cable
12	3200115	1	Elbow, 3/8" O-Ring to 1/4" Female Pipe	55	2700783	1	Ignition Switch with Key
13	3200060	1	Hex Nipple, 1/4" NPT	56	2701261	1	Ignition Key Only
14	3200056	1	Flow Control Valve, 1/4" NPT	57	2700784	1	Engine Temperature Gauge
15	3200057	2	Elbow, 1/4" Male Pipe to 1/4" Male JIC	58	2700786	1	Oil Pressure Light (Green)
16	6010215	1	Depth Stop Assembly (Includes #17 - #27)		2700923	1	(Bulb Only)
17	6010097	1	Depth Stop Weldment	59	2700787	1	Oil Temperature Light (Red)
18	2900133	1	Wave Washer		2700923	1	(Bulb Only)
19	2900058	1	Flat Washer, 1/2" SAE	60	2700785	1	Alternator Light (Orange)
20	2900239	1	Friction Washer, 1/2"		2700923	1	(Bulb Only)
21	6010095	1	Depth Stop Knob	61	2500650	1	Fuel Tank, 9 Gallon
22	2900132	1	Roll Pin, 3/16" x 1-1/4"	62	2500649	1	Fuel Tank Cap with Gauge
23	2900158	1	Yoke, 1/2"-13	63	2500205	1	Fuel Tank Grommet
24	2900084	1	Lock Washer, 1/2" Split	64	6010257	2	Fuel Tank Mount Bar
25	2900037	1	Hex Nut, 1/2"-13	65	2900019	4	Capscrew, Hex Hd., 5/16"-18 x 3/4"
26	2900007	1	Clevis Pin, 1/2" Dia. x 1-3/8"	66	2900031	8	Lock Washer, 5/16" Split
27	2900004	1	Cotter Pin, 1/8" x 1"	67	2900022	8	Flat Washer, 5/16" SAE
28	6010214	1	Depth Indicator Assembly (Includes #9, #29 - #42)	68	2900138	4	Capscrew, Hex Hd., 5/16"-18 x 1"
				69	3200108	1	Fuel Shut-off Valve
29	6010092	1	Depth Indicator Mount Bracket	70	3200012	1	Street Elbow, 1/4" NPT
30	2900144	3	Capscrew, Hex Hd., 1/4"-20 x 3/4"	71	3200202	1	Fitting, 1/4" Male Pipe to 5/16" Push Lock
31	2900010	4	Lock Nut, 1/4"-20 Nylon	72	6013095	1	Fuel Line Hose, 5/16" I.D. x 4" Long
32	2500155	2	Cable Pulley, 1-1/4"	73	2500474	1	Fuel Filter, 5/16" with Clamps
33	2900008	2	Capscrew, Hex Hd., 1/4"-20 x 1"	74	6013096	1	Fuel Line Hose, 5/16" I.D. x 28" Long
34	6010091	1	Depth Indicator Pointer	75	3200062	2	Hose Clamp #4
35	2900079	1	Capscrew, Hex Hd., 3/8"-16 x 2-1/4"	76	3200091	1	Fitting, 1/4" Female JIC to 1/4" Push Lock (Diesel)
36	2500145	1	Flange Bearing, 3/8"	77	6010103	1	Fuel Line Hose, 1/4" I.D. x 28" Long (Diesel)
37	6010093	1	Cable Pulley, 2"	78	3200116	1	Elbow, 1/4" O-Ring to 3/8" Male JIC
38	2900018	1	Lock Nut, 3/8"-16 Nylon	79	3200046	1	Fitting, 3/8" Female JIC to 3/8" Push Lock
39	6010094	1	Depth Indicator Cable with Crimp, 48"	80	2800388	1	Fuse Panel, 6 Circuit
40	2500196	1	Spring, 3/8" x 15"	81	2800389	6	Fuse, 10 Amp Red ATO/ATC
41	2900055	1	Cotter Pin, 3/16" x 1"	82	2900451	2	Capscrew, Soc. Hd., #10-24 x 1-1/4"
42	2500214	1	Cable Clamp	83	2900016	2	Flat Washer, #10 USS
				84	2900017	2	Lock Nut, #10-24 Nylon



CC7100 Parts List
Drawing VI
Blade Guard Assembly

Diagram Number	Part No.	Qty. Req.	Description	Diagram Number	Part No.	Qty. Req.	Description
1	6010070	1	14" Blade Guard Assembly (Includes #2 - #22)	15	2900156	1	Lock Pin Only
	6010072	1	20" Blade Guard Assembly (Includes #2 - #21)	16	6048283	2	Water Tube for 14" Blade Guard
	6010074	1	26" Blade Guard Assembly (Includes #2 - #18, #23)		6010085	2	Water Tube for 20" Blade Guard
	6010076	1	30" Blade Guard Assembly (Includes #2 - #18, #23)		6010086	2	Water Tube for 26" Blade Guard
	6010078	1	36" Blade Guard Assembly (Includes #2 - #18, #23)		6010087	2	Water Tube for 30" Blade Guard
	6010143	1	42" Blade Guard Assembly (Includes #2 - #18, #23)		6010088	2	Water Tube for 36" Blade Guard
				17	6048155	2	Water Tube for 42" Blade Guard
2	6010071	1	14" Blade Guard Front & Rear Only	18	2900020	4	Capscrew, Flat Hd., 1/4"-20 x 3/4"
	6010073	1	20" Blade Guard Front & Rear Only	19	6048150	1	Hinge Assembly for 14" Blade Guard (Includes #8, #20 - #22)
	6010075	1	26" Blade Guard Front & Rear Only		6010251	1	Hinge Assembly for 20" Blade Guard (Includes #8, #20, #21)
	6010077	1	30" Blade Guard Front & Rear Only	20	2500270	1	Hinge Only
	6010079	1	36" Blade Guard Front & Rear Only	21	2900144	6	Capscrew, Hex Hd., 1/4"-20 x 3/4"
	6010144	1	42" Blade Guard Front & Rear Only	22	2900052	1	Capscrew, Hex Hd., 1/4"-20 x 1-1/4"
3	6010304	1	14" Blade Guard Front Only	23	6010263	1	Hinge Assembly for 26"-42" Blade Guards (Includes #24 - #29)
	6010305	1	20" Blade Guard Front Only	24	6010125	1	Hinge Only
	6010306	1	26" Blade Guard Front Only	25	2900509	1	Capscrew, Hex Hd., 1/2"-13 x 4"
	6010307	1	30" Blade Guard Front Only	26	2900026	1	Lock Nut, 1/2"-13 Nylon
	6010308	1	36" Blade Guard Front Only	27	2900013	4	Capscrew, Hex Hd., 3/8"-16 x 1-1/4"
	6010311	1	42" Blade Guard Front Only	28	2900014	6	Flat Washer, 3/8" SAE
4	6010081	1	Splash Flap	29	2900018	4	Lock Nut, 3/8"-16 Nylon
5	2900008	2	Capscrew, Hex Hd., 1/4"-20 x 1"	30	2900291	1	Capscrew, Hex Hd., 5/8"-18 x 4" for 36" Blade Guard Only
6	2900009	4	Flat Washer, 1/4" SAE		2900502	1	Capscrew, Hex Hd., 5/8"-11 x 5" for 42" Blade Guard Only
7	2900083	2	Fender Washer, 1/4" x 1-1/4"	31	2900002	2	Flat Washer, 5/8" SAE
8	2900010	15	Lock Nut, 1/4"-20 Nylon	32	2900112	1	Hex Nut, 5/8"-11
9	6010261	1	Manifold for 14" - 30" Blade Guards	33	6013072	1	Blade Guard Brace for 30" & 36" Blade Guards
	6010264	1	Manifold for 36" Blade Guard		6013086	1	Blade Guard Brace for 42" Blade Guard
	6010273	1	Manifold for 42" Blade Guard	34	2900005	2	Capscrew, Hex Hd., 3/8"-16 x 1"
10	2500830	1	Manifold Gasket for 14"-36" Blade Guards	35	2900006	2	Lock Washer, 3/8" Split
	2500859	1	Manifold Gasket for 42" Blade Guard	36	6013098	1	Rear Brace for 36" Blade Guard Only
11	2900294	2	Capscrew, Hex Hd., 1/4"-20 x 2"	37	2900147	1	Capscrew, Hex Hd., 5/8"-11 x 1-3/4"
12	3200001	3	Pipe Plug, 1/8" NPT	38	2900256	1	Jam Nut, 5/8"-11
13	3200002	1	Fitting, 3/4" Male Garden Hose to 3/8" Male Pipe				
14	2900278	1	Lanyard with Lock Pin for 14" & 20" Blade Guards				
	2900279	1	Lanyard with Lock Pin for 26" & 30" Blade Guards				
	2900280	1	Lanyard with Lock Pin for 36" & 42" Blade Guards				

WIRING DIAGRAM FOR NEWER DEUTZ ENGINE (AFTER 9-1-2000)



**Wiring Diagram
Deutz Diesel
(After 9-1-2000)**

Diagram Number	Part No.	Qty. Req.	Description	Diagram Number	Part No.	Qty. Req.	Description
1	2800396	1	Control Panel Harness	25	2800213	1	Emergency Stop Button
2	2800429	1	Engine Harness (Includes #31 & #32)		2800229	1	Contact Block N.C.
3	2800397	1	Tach Sensor Harness (Includes #29 & #30)	26	2800388	1	Fuse Panel, 6 Circuit
4	2800392	1	Relay Harness		2800389	6	Fuse, 10 Amp Red ATO/ATC
5	2800393	1	Hydraulic Pump Harness	27	2800168	1	Tach/Hour Meter
6	2800073	1	Battery Cable, Positive (Red)		2800267	1	Light Bulb, Wedge Base
7	2800072	1	Battery Cable, Negative (Black)	28	2800169	1	Magnetic Sensor (Includes #29)
8	2800095	1	Solenoid Cable, Positive (Red)	29	2800145	2	Connector, 2 Wire Shroud
9	2800182	1	Ground Cable, Negative (Black)		2800114	4	Male Terminal, 14/16 Gage Wire
10	2700208	1	Battery, 12 Volt		2800174	4	Cable Seal, Gray
11	2600070	1	Hydraulic Pump Unit (Includes #12 and #13)	30	2800146	2	Connector, 2 Wire Tower
12	2700169	1	Solenoid, Motor		2800115	4	Female Terminal, 14/16 Gage Wire
13	2700243	1	Valve Coil		2800174	4	Cable Seal, Gray
	2700244	1	Valve Stem	31	2800145	1	Connector, 2 Wire Shroud
14	2800372	1	Pushbutton Switch, Raise		2800114	1	Male Terminal, 14/16 Gage Wire
15	2800373	1	Pushbutton Switch, Lower		2800112	1	Male Terminal, 12 Gage Wire
16	2701821	1	Starting Motor (Includes #17)		2800174	1	Cable Seal, Gray
17	2701823	1	Solenoid Switch		2800175	1	Cable Seal, Blue
18	2700784	1	Engine Temperature Gauge	32	2800146	1	Connector, 2 Wire Tower
19	2700785	1	Alternator Light (Orange)		2800115	1	Female Terminal, 14/16 Gage Wire
	2700923	1	(Bulb Only)		2800113	1	Female Terminal, 12 Gage Wire
20	2700786	1	Oil Pressure Light (Green)		2800174	1	Cable Seal, Gray
	2700923	1	(Bulb Only)		2800175	1	Cable Seal, Blue
21	2700787	1	Oil Temperature Light (Red)	33	2800062	2	Optional Toggle Switch
	2700923	1	(Bulb Only)		2800063	2	Switch Boot
22	2700783	1	Ignition Switch with Key	34	2500194	1	Optional Spot Light, 12 Volt
	2701261	1	(Ignition Key Only)	35	2501087	1	Optional Magnetic Base Light, 12 Volt
23	2800387	1	Circuit Breaker, 25 Amp	36	2800374	1	Optional Power Outlet, 12 Volt
	2800364	1	Circuit Breaker Boot, Red		2800375	1	Outlet Cap
24	2800144	1	Relay	37	2600200	1	Optional Water Pump, Diaphragm
	2800263	1	Relay Connector				
	2800264	4	Wire Terminal, 1/4" Push-on				

EQUIPMENT AND PARTS WARRANTY

Diamond Products warrants all equipment manufactured by it against defects in workmanship or materials for a period of one (1) year from the date of shipment to Customer.

The responsibility of Diamond Products under this Warranty is limited to replacement or repair of defective parts at Diamond Products' Elyria, Ohio factory, or at a point designated by it, of such parts as shall appear to us upon inspection at such point, to have been defective in material or workmanship, with expense for transportation and labor borne by Customer.

In no event shall Diamond Products be liable for consequential or incidental damages arising out of the failure of any Product to operate properly.

Integral units such as engines, electric motors, batteries, transmissions, etc., are excluded from this Warranty and are subject to the prime manufacturer's warranty.

THIS WARRANTY IS IN LIEU OF ALL OTHER WARRANTIES, EXPRESSED OR IMPLIED, AND ALL SUCH OTHER WARRANTIES ARE HEREBY DISCLAIMED.



333 Prospect Street, Elyria, Ohio 44035
(440) 323-4616 • (800) 321-5336 • Fax (440) 323-8689
www.diamondproducts.com