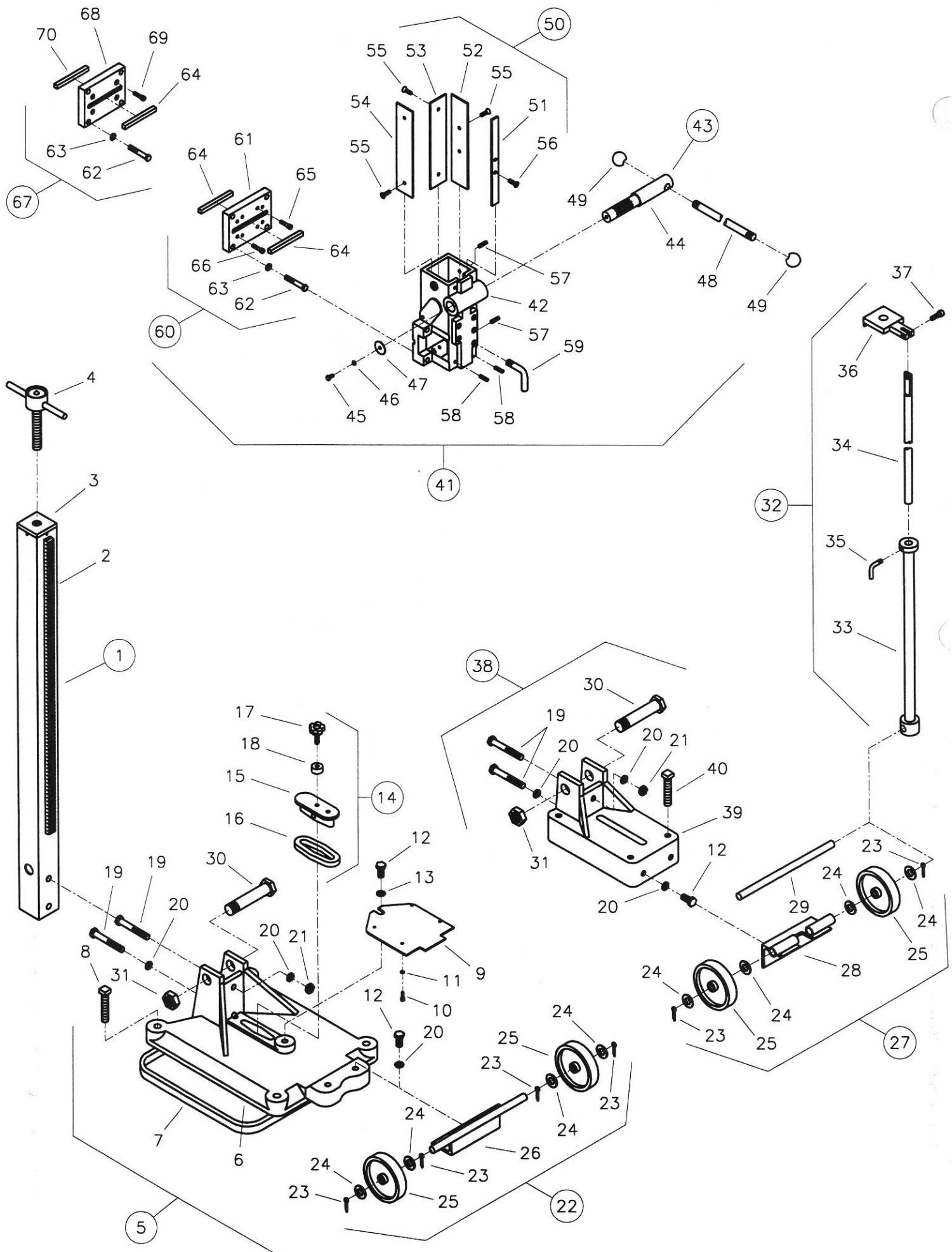


**DIAMOND
PRODUCTS**

**DRILLING
MACHINES
PARTS LIST**

(Revised 6-1-99)

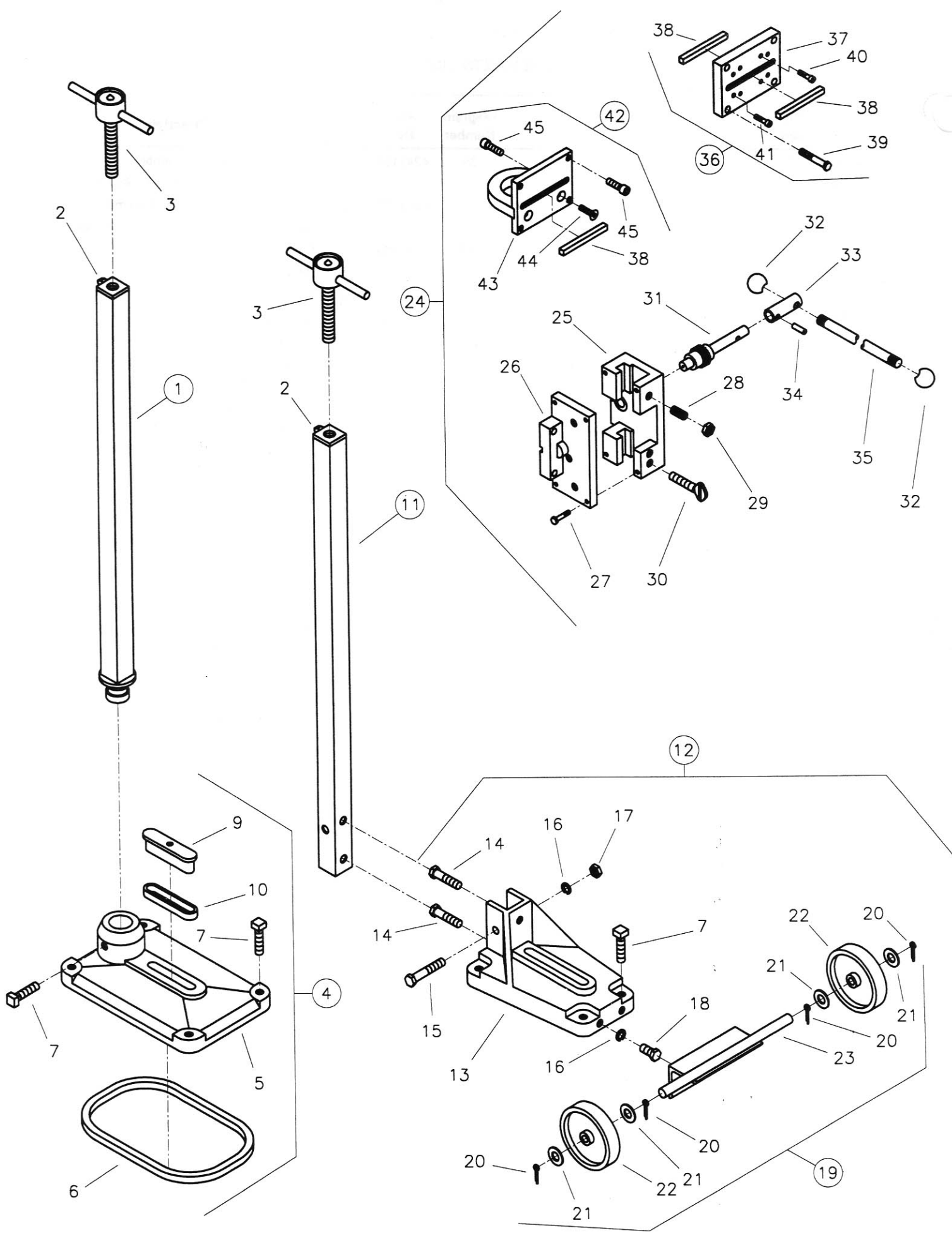


M-1 PARTS LIST

Diagram Number	Part No.	Qty. Req.	Description	Diagram Number	Part No.	Qty. Req.	Description
1	4645015	1	Mast, 2-1/2" Sq. x 42" (Includes #2 and #3)	34	4645061	1	Upper Brace
	4645068	1	Angle Mast, 2-1/2" Sq. x 42" (Includes #2 and #3)	35	2900095	1	L-Bolt, 5/16"-18
				36	4645080	1	Mast Bracket
				37	2900103	1	Capscrew, Soc. Hd., 5/16"-18 x 1"
2	2400053	1	Gear Rack Only, 32"	38	4246060	1	Anchor Base Assembly
3	4645073	1	Mast Top with Pins				(Includes #12, #19 - #26, #39, #40)
	2900171	4	(Split Pin Only)		4645077	1	Angle Anchor Base Assembly
4	4645016	1	Ceiling Jack				(Includes #12, #19 - #21, #27 - #31, #39, #40)
5	4245070	1	Combination Base Assembly (Includes #6 - #26)	39	4645038	1	Anchor Base Only
					4645076	1	Angle Anchor Base Only
	4645079	1	Angle Combination Base Assembly (Includes #6 - #21, #27 - #31)	40	2900027	4	Setscrew, Sq. Hd., 1/2"-13 x 4"
				41	4645044	1	Carriage Assembly (Includes #42 - #66)
6	4645019	1	Combination Base Only	42	4645018	1	Carriage Only
	4645074	1	Angle Combination Base Only	43	4645009	1	Pinion Gear Assembly (Includes #44 - #47)
7	4645020	1	Vacuum Gasket	44	4645012	1	Pinion Gear Only
8	2900081	4	Setscrew, Sq. Hd., 5/8"-11 x 3"	45	2900082	1	Capscrew, Hex. Hd., 1/4"-20 x 1/2"
9	4645022	1	Vacuum Platform	46	2900024	1	Lock Washer, 1/4" Split
10	2900087	4	Capscrew, Soc. Hd., #10-32 x 5/8"	47	2900083	1	Fender Washer, 1/4" I.D. x 1-1/4" O.D.
11	2900016	4	Flat Washer, #10 USS	48	4645013	1	Feed Handle
12	2900086	3	Capscrew, Hex Hd., 1/2"-13 x 1"	49	2400001	2	Handle Knob
13	2900127	1	Flat Washer, 1/2" USS	50	4645011	1	Brass Shim and Screw Assembly (Includes #51 - #56)
14	4600046	1	Slot Cap Assembly (Includes #15 - #18)				
15	4600004	1	Slot Cap	51	4645007	2	Adjusting Shim, 1/8" x 5/8" x 8-7/8"
16	2400003	1	Slot Cap Gasket	52	4645008	1	Adjusting Shim, 1/8" x 1-1/2" x 9"
17	2400130	1	Slot Cap Knob	53	4645003	1	Non-Adjusting Shim, 1/8" x 1-1/2" x 9"
18	2400169	1	Knob Gasket	54	4645027	1	Non-Adjusting Shim, 1/8" x 1-1/2" x 9"
19	2900080	2	Capscrew, Hex Hd., 1/2"-13 x 3-1/2"	55	2900074	6	Capscrew, Flat Hd. Brass, 1/4"-20 x 5/8"
20	2900084	4	Lock Washer, 1/2" Split	56	2900075	4	Capscrew, Flat Hd. Brass, 1/4"-20 x 1"
21	2900129	1	Jam Nut, 1/2"-13	57	2900076	2	Setscrew, Soc. Hd. 1/4"-20 x 1/2"
22	4645046	1	Wheel Assembly (Includes #23 - #26)	58	2900101	4	Setscrew, Soc. Hd. 1/4"-20 x 3/8"
				59	2900078	1	Carriage Lock, 1/2"-13
23	2900085	4	Cotter Pin, 3/32" x 1"	60	4645023	1	Motor Mount Assembly (Includes #61 - #66)
24	2900128	4	Flat Washer, 5/8" USS	61	4645010	1	Motor Mount Plate
25	2400004	2	Wheel, 6"	62	2900079	4	Capscrew, Hex Hd., 3/8"-16 x 2-1/4"
26	4645033	1	Wheel Mount Bracket	63	2900006	4	Lock Washer, 3/8" Split
27	4645078	1	Angle Wheel Assembly (Includes #23 - #25, #28, #29)	64	4645006	2	Key, 3/8" Sq. x 4"
				65	2900089	4	Capscrew, Soc. Hd., 1/4"-28 x 1" (For DeWalt Motors)
28	4645064	1	Angle Wheel Mount Bracket				
29	4645071	1	Wheel Axle	66	2900088	4	Capscrew, Soc. Hd., 1/4"-20 x 1" (For Milwaukee Motors)
30	2900097	1	Capscrew, Hex Hd., 1"-8 x 4-3/4"				
31	2900098	1	Jam Nut, 1"-8	67	4648031	1	Weka Motor Mount Assembly
32	4645072	1	Angle Brace Assembly (Includes #33 - #37)	68	4648032	1	Weka Motor Mount Plate
				69	2900161	4	Capscrew, Soc. Hd., M8 x 25mm
33	4645063	1	Lower Brace	70	2900263	1	Key, 10mm x 8mm x 100mm

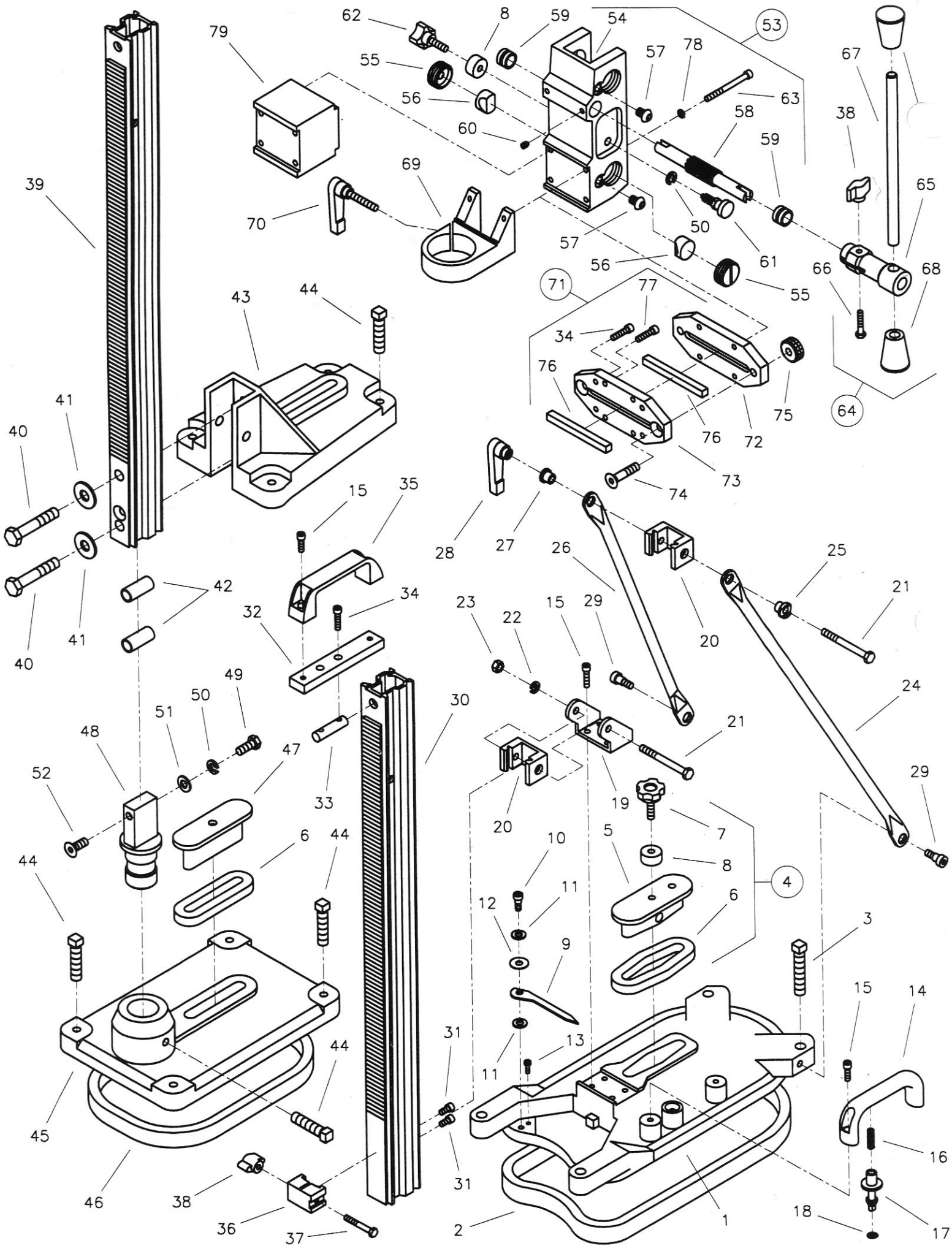
M-2 PARTS LIST

Diagram Number	Part No.	Qty. Req.	Description	Diagram Number	Part No.	Qty. Req.	Description
1	4641002	1	Mast, 2-7/8" sq. x 42" (Includes #2, #3)	39	4241105	1	Small Anchor Base Assembly
	4641068	1	Angle Mast, 2-7/8" sq. x 42" (Includes #2, #3)		4641071	1	Small Angle Anchor Base Assembly (Includes #12, #19, #21 - #27, #40, #41)
2	2400170	1	Gear Rack Only, 32"				(Includes #12, #19, #21, #27 - #32, #40, #41)
3	4641076	1	Mast Top with Pins	40	4641004	1	Small Anchor Base Only
	2900207	4	(Dowel Pin Only)		4641072	1	Small Angle Anchor Base Only
4	4641001	1	Ceiling Jack	41	2900100	4	Setscrew, Sq. Hd., 5/8"-11 x 4"
5	4241060	1	Combination Base Assembly (Includes #6 - #27)	42	4241063	1	Large Anchor Base Assembly (Includes #13, #19, #25, #43 - #46) 46)
	4641070	1	Angle Combination Base Assembly (Includes #6 - #21, #27 - #32)	43	4641005	1	Large Anchor Base Only (Web Base)
				44	2900105	2	Capscrew, Hex Hd., 1/2"-13 x 2-3/4"
6	4641025	1	Combination Base Only	45	4641006	2	Wheel Bushing
	4641075	1	Angle Combination Base Only	46	2900104	4	Setscrew, Sq. Hd., 5/8"-11 x 6"
7	4641024	1	Vacuum Gasket	47	4641035	1	Carriage Assembly (Includes #48 - #75)
8	2900081	4	Setscrew, Sq. Hd., 5/8"-11 x 3"	48	4641017	1	Carriage Housing
9	4645022	1	Vacuum Platform	49	4641013	1	Carriage Plate
10	2900087	4	Capscrew, Soc. Hd., #10-32 x 5/8"	50	2900103	8	Capscrew, Soc. Hd., 5/16"-18 x 1"
11	2900016	4	Flat Washer, #10 USS	51	4641015	1	Spoke Handle Assembly (Includes #52 - #54)
12	2900086	3	Capscrew, Hex Hd., 1/2"-13 x 1"	52	4641016	4	Spoke Handle
13	2900127	1	Flat Washer, 1/2" USS (4 req'd for #42)	53	4641019	1	Handle Housing
				54	2900124	5	Capscrew, Soc. Hd., 3/8"-16 x 1-3/4"
14	4600046	1	Slot Cap Assembly (Includes #15 - #18)	55	4647124	1	Pinion Gear Assembly (Includes #56 - #60)
15	4600004	1	Slot Cap	56	2400006	1	Bronze Bearing, 1" I.D. x 1-1/4" O.D. x 7/8"
16	2400003	1	Slot Cap Gasket	57	4641022	1	Pinion Gear
17	2400130	1	Slot Cap Knob	58	2400005	1	Bronze Bearing, 5/8" I.D. x 7/8" O.D. x 3/4"
18	2400169	1	Knob Gasket	59	2900101	5	Setscrew, Soc. Hd., 1/4"-20 x 3/8"
19	2900146	1	Capscrew, Hex Hd., 5/8"-11 x 4"	60	2900056	1	Setscrew, Soc. Hd., 1/4"-20 x 1/4"
20	2900099	1	Capscrew, Hex Hd., 5/8"-11 x 3-1/2"	61	2900078	1	Carriage Lock, 1/2"-13
21	2900256	1	Jam Nut, 5/8"-11	62	4641011	1	Brass Shim and Screw Assembly (Includes #63 - #68)
22	4645046	1	Wheel Assembly (Includes #23 - #26)				
23	2900085	4	Cotter Pin, 3/32" x 1"	63	4641020	2	Shim, 1/8" x 2-1/2" x 9"
24	2900128	4	Flat Washer, 5/8" USS	64	2900102	8	Capscrew, Flat Hd. Brass, 1/4"-20 x 1/2"
25	2400004	2	Wheel, 6"	65	4641018	1	Shim, 1/8" x 2-1/2" x 10"
26	4645033	1	Wheel Mount Bracket	66	2900074	4	Capscrew, Flat Hd. Brass, 1/4"-20 x 5/8"
27	2900084	2	Lock Washer, 1/2" Split	67	4641012	2	Shim, 1/8" x 5/8" x 9"
28	4645078	1	Angle Wheel Assembly (Includes #23 - #25, #29, #30)	68	2900075	4	Capscrew, Flat Hd. Brass, 1/4"-20 x 1"
				69	2900077	4	Setscrew, Soc. Hd., 1/4"-20 x 7/8"
29	4645064	1	Angle Wheel Mount Bracket	70	4641009	1	Motor Mount Assembly (Includes #54, #71 - #75)
30	4645071	1	Wheel Axle	71	4641042	1	Motor Mount Plate
31	2900097	1	Capscrew, Hex Hd., 1"- 8 x 4-3/4"	72	4641010	1	Key, 1/2" Sq. x 4"
32	2900098	1	Jam Nut, 1"-8	73	2900089	4	Capscrew, Soc. Hd., 1/4"-28 x 1"
33	4641077	1	Angle Brace Assembly (Includes #34 - #38)				(For DeWalt Motors)
				74	2900088	4	Capscrew, Soc. Hd., 1/4"-20 x 1"
							(For Milwaukee Motors)
34	4645063	1	Lower Brace				
35	4645061	1	Upper Brace	75	4645006	1	Key, 3/8" Sq. x 4"
36	2900095	1	L-Bolt, 5/16"-18	76	4648033	1	Weka Motor Mount Assembly (Includes #54, #72, #77 - #79)
37	4641069	1	Mast Bracket				
38	2900103	1	Capscrew, Soc. Hd., 5/16"-18 x 1"	77	4648034	1	Weka Motor Mount Plate
				78	2900161	4	Capscrew, Soc. Hd., M8 x 25mm
				79	2900263	1	Key, 10mm x 8mm x 100mm



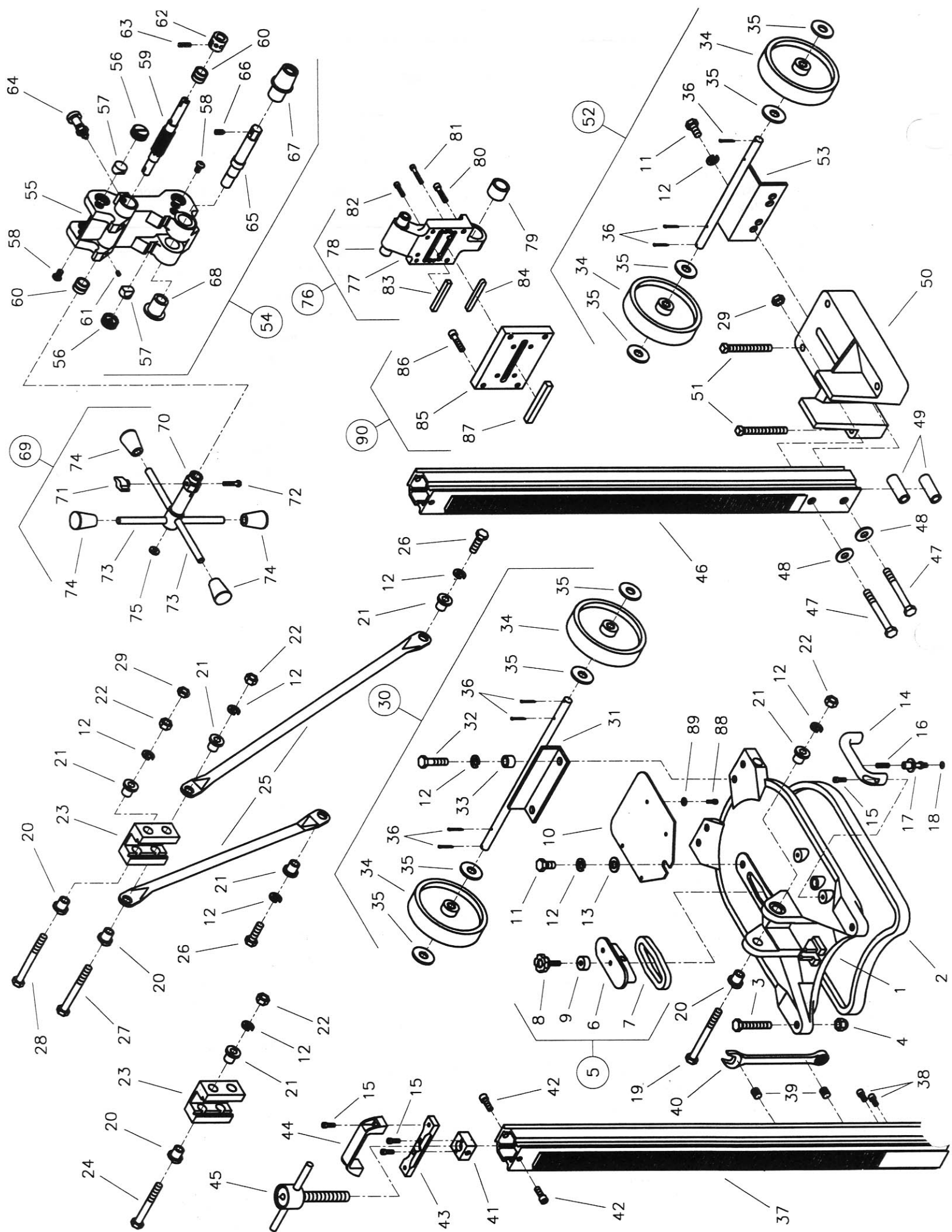
M-3 PARTS LIST

Diagram Number	Part No.	Qty. Req.	Description	Diagram Number	Part No.	Qty. Req.	Description
1	4643037	1	Stair Mast, 1-1/2" Sq. x 33" (Includes #2)	23	4645033	1	Wheel Mount Bracket
2	4643038	1	Gear Rack Only, 27"	24	4643043	1	Carriage Assembly (Includes #25 - #46)
3	4645016	1	Ceiling Jack	25	4643014	1	Carriage Body
4	4643044	1	Stair Base Assembly (Includes #5 - #10)	26	4643008	1	Carriage Plate
5	4643039	1	Stair Base Only	27	2900052	4	Capscrew, Hex Hd., 1/4"-20 x 1-1/4"
6	4643040	1	Vacuum Gasket	28	2900110	4	Setscrew, Slotted Nylon, 1/2"-20 x 1"
7	2900107	4	Setscrew, Sq. Hd., 1/2"-13 x 2" (5 req'd for stair base)	29	2900109	4	Jam Nut, 1/2"-20
8	---	---	---	30	2900108	1	Thumb Screw, 1/2"-13 x 2"
9	4645031	1	Slot Cap	31	4643015	1	Pinion Gear
10	2400003	1	Slot Cap Gasket	32	2400007	2	Handle Knob
11	4643002	1	Anchor Mast, 1-1/2" Sq. x 34" (Includes #2)	33	4643018	1	Handle Housing
12	4643045	1	Anchor Base Assembly (Includes #7, #13 - #23)	34	2900111	1	Split Pin, 5/16" x 1" Split Pin
13	4643005	1	Anchor Base Only	35	4643020	1	Handle
14	2900106	2	Capscrew, Hex Hd., 1/2"-13 x 2"	36	4643021	1	Motor Mount Assembly (Includes #37 - #41)
15	2900105	1	Capscrew, Hex Hd., 1/2"-13 x 2-3/4"	37	4645010	1	Motor Mount Plate
16	2900084	3	Lock Washer, 1/2" Split	38	4645006	2	Key, 3/8" Sq. x 4" Long (1 req'd for Weka Motor Mount)
17	2900129	1	Jam Nut, 1/2"-13	39	2900124	4	Capscrew, Soc. Hd., 3/8"-16 x 1-3/4"
18	2900086	2	Capscrew, Hex Hd., 1/2"-13 x 1"	40	2900089	4	Capscrew, Soc. Hd., 1/4"-28 x 1" (For DeWalt Motors)
19	4643048	1	Wheel Assembly (Includes #20 - #23)	41	2900088	4	Capscrew, Soc. Hd., 1/4"-20 x 1" (For Milwaukee Motors)
20	2900085	4	Cotter Pin, 3/32" x 1"	42	4648004	1	Weka Motor Mount Assembly (Includes #38, #43 - #45)
21	2900128	4	Flat Washer, 5/8" USS	43	4648000	1	Weka Motor Mount
22	2400008	2	Wheel, 4"	44	2900174	5	Capscrew, Flat Hd., 5/16"-18 x 1"
				45	2900183	5	Capscrew, Soc. Hd., 3/8"-16 x 1-3/8"



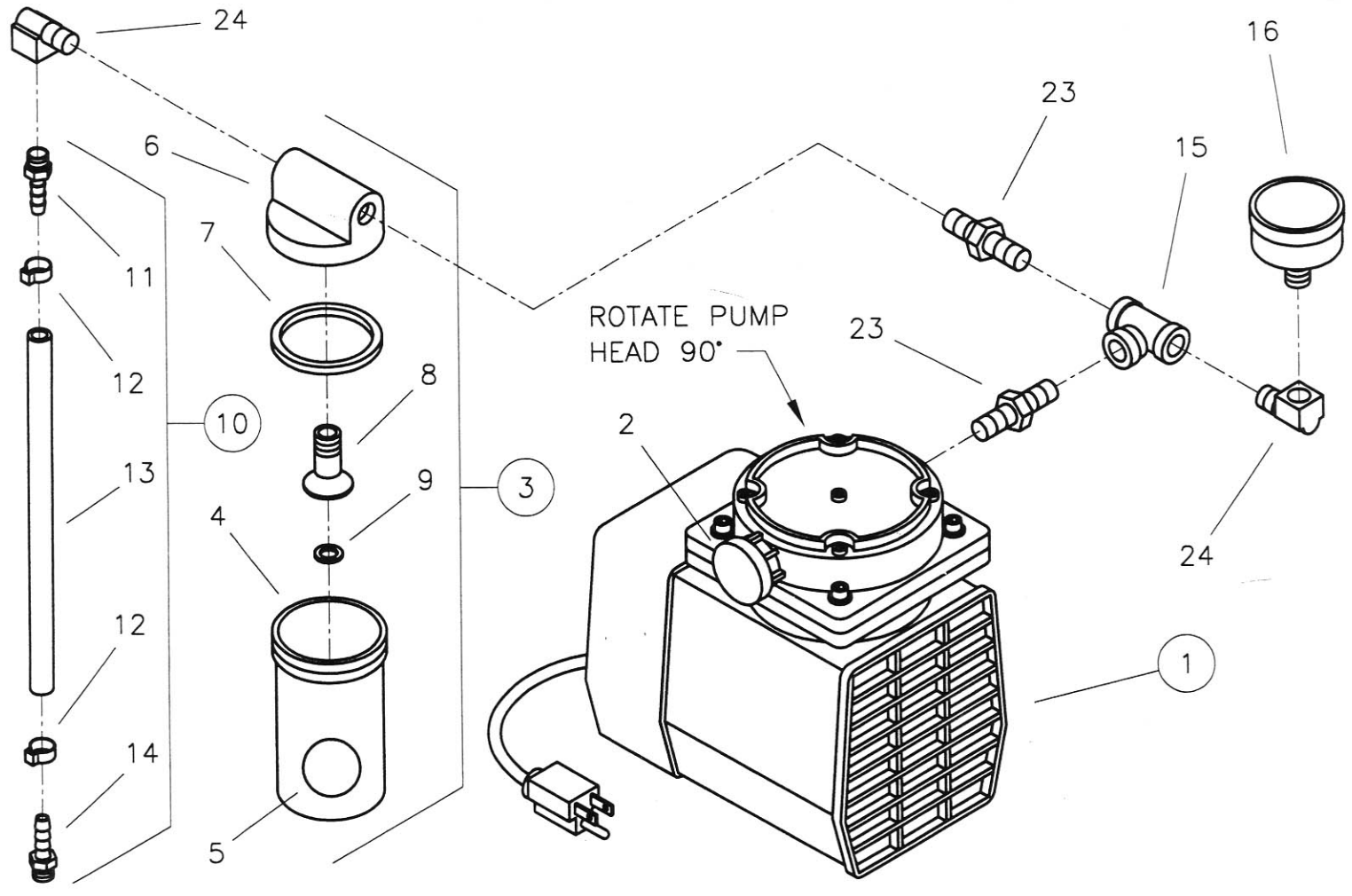
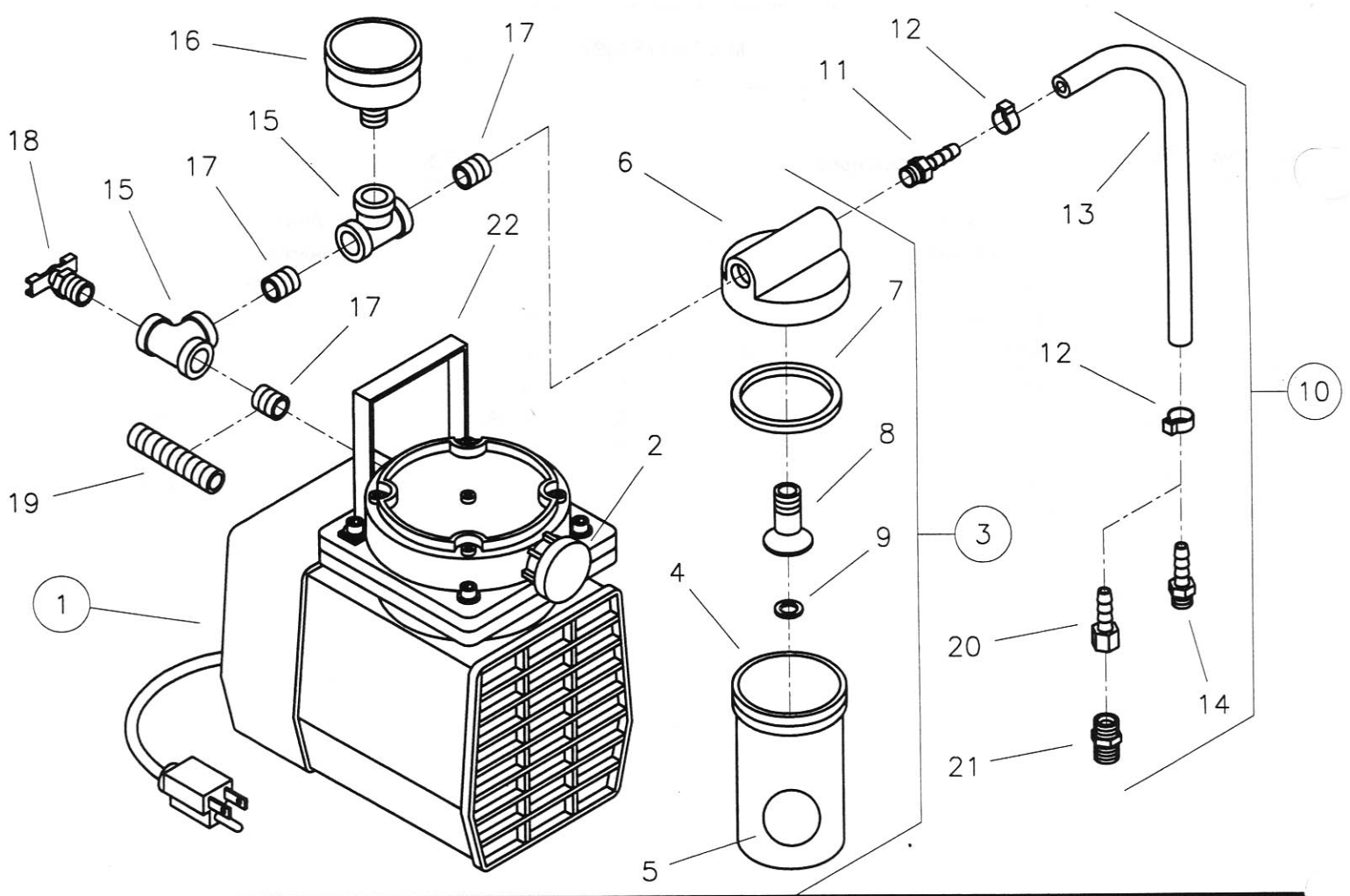
M-4 PARTS LIST

Diagram Number	Part No.	Qty. Req.	Description	Diagram Number	Part No.	Qty. Req.	Description
1	4600001	1	Combo Base	40	2900105	2	Capscrew, Hex Hd., 1/2"-13 x 2-3/4"
2	4600016	1	Vacuum Gasket	41	2900127	2	Flat Washer, 1/2" USS
3	2900229	4	Setscrew, Sq. Hd., 1/2"-13 x 2-1/2"	42	4600044	2	Mast Bushing
4	4600046	1	Slot Cap Assembly (Includes #5 - #8)	43	4600048	1	Anchor Base
5	4600004	1	Slot Cap	44	2900107	4	Setscrew, Sq. Hd., 1/2"-13 x 2" (5 req'd for Stair Base)
6	2400003	1	Slot Cap Gasket				
7	2400130	1	Knob, Slot Cap	45	4643039	1	Stair Base
8	2400169	2	Gasket, Knob	46	4643040	1	Vacuum Gasket
9	2400165	1	Pointer	47	4645031	1	Slot Cap
10	2900246	1	Shoulder Screw, 5/16" Dia. x 1/4"	48	4600043	1	Swivel Mount
11	2900249	2	Flat Washer, 5/16" Precision	49	2900005	1	Capscrew, Hex Hd., 3/8"-16 x 1"
12	2900252	1	Belleville Washer, 5/16"	50	2900254	2	Lock Washer, 3/8" Internal Tooth
13	2900250	1	Capscrew, Low Hd. Soc., #10-32 x 3/8"	51	2900014	1	Flat Washer, 3/8" SAE
14	4600015	1	Base Handle	52	2900235	1	Capscrew, Flat Hd., 3/8"-16 x 1"
15	2900247	8	Capscrew, Soc. Hd., 1/4"-20 x 3/4"	53	4600028	1	Carriage Assembly (Includes #8, #50, #54 - #63)
16	2400149	1	Spring	54	4600002	1	Carriage
17	4600022	1	Vacuum Release Valve (Includes #18)	55	4600017	4	Guide Adjuster
18	2400142	1	O-Ring	56	4600018	4	Carriage Guide
19	4600024	1	Mast Mounting Clamp	57	2900285	4	Capscrew, Button Hd., 3/8"-24 x 1/2"
20	4600006	2	Mast Sliding Clamp	58	4600008	1	Pinion Gear
21	2900248	2	Capscrew, Hex Hd., 5/16"-18 x 3"	59	2400162	2	Pinion Bearing
22	2900031	1	Lock Washer, 5/16" Split	60	2900386	2	Setscrew, Soc Hd., 1/4"-20 x 1/4" Cone Point
23	2900141	1	Hex Nut, 5/16"-18	61	2400164	1	Indexing Plunger
24	4600040	1	Angle Brace Tube, Left Hand with Bushing (Includes #25)	62	2400157	1	Carriage Lock Knob
25	2400160	1	Clamping Bushing	63	2900245	4	Capscrew, Soc. Hd., 1/4"-20 x 2-3/4"
26	4600041	1	Angle Brace Tube, Right Hand with Bushing (Includes #27)	2900405	4	Capscrew, Soc. Hd., 1/4"-20 x 5-1/2" (For Stair Rig with Weka Motor Only)	
27	2400161	1	Tension Bushing	64	4600049	1	Handle Assembly (Includes #38, #65 - #68)
28	2400152	1	Handle, Adjustable	65	4600011	1	Handle Housing
29	2900253	2	Shoulder Screw, 3/8" Dia. x 3/8"	66	2900052	1	Capscrew, Hex Hd., 1/4"-20 x 1-1/4"
30	4600007	1	Mast, 30" Combo	67	4600012	1	Feed Handle
	4600034	1	Mast, 42" Combo	68	2400155	2	Knob, Tapered
31	2900122	2	Capscrew, Soc. Hd., 1/4"-20 x 1/2"	69	4600003	1	Motor Mount Clamp (60mm Bore)
32	4600013	1	Handle Plate	70	2400151	1	Handle, Adjustable with Stud
33	4600014	1	Handle Pin	71	4600029	1	Motor Mount Assembly (Includes #34, #72 - #78)
34	2900088	6	Capscrew, Soc. Hd., 1/4"-20 x 1"	72	4600020	1	Carriage Adapter Plate
35	2400145	1	Mast Handle, Plastic	73	4600021	1	Motor Mount Plate
36	4600010	1	Depth Gauge	74	2900251	2	Capscrew, Flat Hd., 3/8"-16 x 1-3/4"
37	2900392	1	Capscrew, Hex Hd., 1/4"-20 x 1-3/4"	75	2400163	2	Knurled Nut, 3/8"-16
38	2400153	2	Knob, 1/4"-20 T-Handle	76	4645006	2	Key, 3/8" Sq. x 4" Long
39	4600042	1	Mast, 30" Anchor/Swivel	77	2900089	4	Capscrew, Soc. Hd., 1/4"-28 x 1"
	4600047	1	Mast, 42" Anchor/Swivel	78	2900404	4	Lock Washer, 1/4" High Collar
				79	4600045	1	Motor Mount Spacer (For Stair Rig with Weka Motor Only)



M-5 PARTS LIST

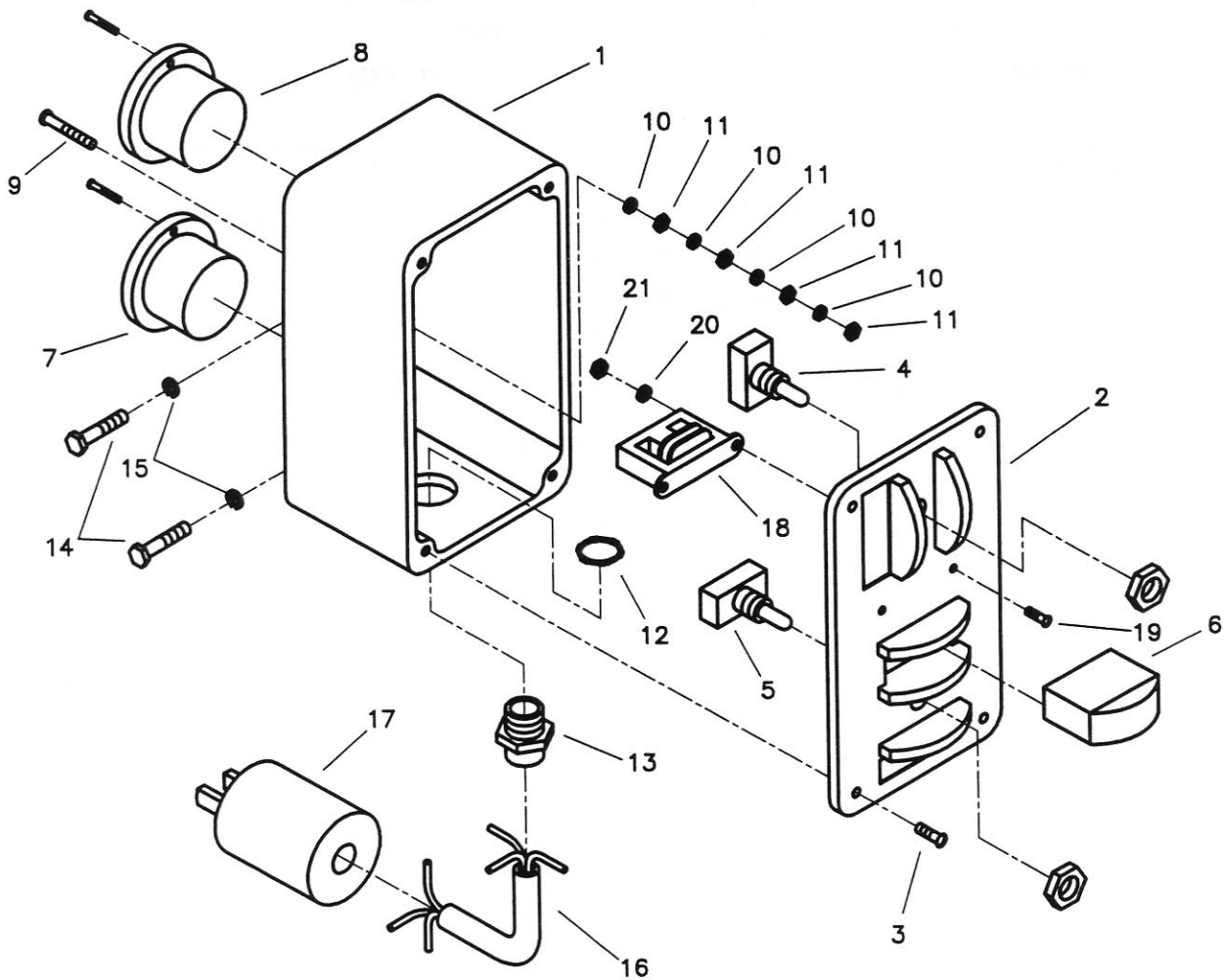
Diagram Number	Part No.	Qty. Req.	Description	Diagram Number	Part No.	Qty. Req.	Description
1	4600101	1	Combo Base	46	4600115	1	Mast, 40" Anchor
2	4600132	1	Vacuum Gasket		4600127	1	Mast, 60" Anchor
3	2900541	4	Tap Bolt, Hex Hd., 1/2"-13 x 2-3/4"	47	2900400	2	Capscrew, Hex Hd., 1/2"-13 x 3-3/4"
4	2900011	4	Acorn Nut, 1/2"-13	48	2900127	2	Flat Washer, 1/2" USS
5	4600046	1	Slot Cap Assembly (Includes #6 - #9)	49	4600117	2	Mast Bushing
6	4600004	1	Slot Cap	50	4645038	1	Anchor Base
7	2400003	1	Slot Cap Gasket	51	2900542	4	Tap Bolt, Hex Hd., 1/2"-13 x 3-1/2"
8	2400130	1	Slot Cap Knob	52	4645046	1	Wheel Assembly (Includes #11, #12, #34 - #36, #53)
9	2400169	1	Knob Gasket				
10	4600120	1	Vacuum Pump Platform	53	4645033	1	Wheel Mount Bracket
11	2900086	3	Capscrew, Hex Hd., 1/2"-13 x 1"	54	4600128	1	Carriage Assembly (Includes #55 - #68)
12	2900084	11	Lock Washer, 1/2" Split	55	4600102	1	Carriage
13	2900058	1	Flat Washer, 1/2" SAE	56	4600017	4	Guide Adjuster
14	4600015	1	Base Handle	57	4600018	4	Carriage Guide
15	2900247	6	Capscrew, Soc. Hd., 1/4"-20 x 3/4"	58	2900285	6	Capscrew, Button Hd., 3/8"-24 x 1/2"
16	2400149	1	Spring	59	4600112	1	Pinion Gear
17	4600022	1	Vacuum Release Valve (Includes #18)	60	2400141	2	Pinion Bearing
18	2400142	1	O-Ring	61	2900386	2	Setscrew, Soc. Hd., 1/4"-20 x 1/4" Cone Point
19	2900395	1	Capscrew, Hex Hd., 1/2"-13 x 5"	62	4600113	1	Pinion Lock Bushing
20	2400139	4	Clamping Bushing	63	2900391	1	Roll Pin, 1/4" x 1"
21	2400140	6	Tension Bushing	64	2400138	1	Indexing Plunger
22	2900037	4	Hex Nut, 1/2"-13	65	4600108	1	Cam Lock Shaft
23	4600104	2	Mast Sliding Clamp	66	2400143	1	Ball Plunger
24	2900509	1	Capscrew, Hex Hd., 1/2"-13 x 4"	67	4600109	1	Cam Shaft Housing
25	4600107	2	Angle Brace Tube	68	4600110	1	Cam Shaft Bushing
26	2900139	2	Capscrew, Hex Hd., 1/2"-13 x 1-3/4"	69	4600129	1	Spoke Handle Assembly (Includes #70 - #75)
27	2900403	1	Capscrew, Hex Hd., 1/2"-13 x 4-1/2"	70	4600114	1	Handle Housing
28	2900504	1	Capscrew, Hex Hd., 1/2"-13 x 4-3/4"	71	2400153	1	Knob, 1/4"-20 T-Handle
29	2900129	2	Jam Nut, 1/2"-13	72	2900052	1	Capscrew, Hex Hd., 1/4"-20 x 1-1/4"
30	4600125	1	Wheel Assembly (Includes #12, #31 - #36)	73	4600012	2	Feed Handle
31	4600119	1	Wheel Mount Bracket	74	2400155	4	Knob, Tapered
32	2900106	2	Capscrew, Hex Hd., 1/2"-13 x 2"	75	2900390	1	Washer, 1/4" Cushion
33	4600126	2	Spacer	76	4600130	1	QD Mount Assembly (Includes #77 - #84)
34	2400004	2	Wheel, 6"	77	4600103	1	QD Motor Mount
35	2900128	4	Flat Washer, 5/8" USS	78	4600111	1	Support Tube
36	2900085	4	Cotter Pin, 3/32" x 1"	79	2400144	1	Cam Lock Bearing
37	4600106	1	Mast, 40" Combo	80	2900398	4	Capscrew, Soc. Hd., M8 x 40mm
	4600123	1	Mast, 60" Combo	81	2900399	4	Capscrew, Soc. Hd., 1/4"-20 x 1-1/2"
38	2900396	2	Capscrew, Soc. Hd., 5/16"-18 x 1/2"	82	2900089	4	Capscrew, Soc. Hd., 1/4"-28 x 1"
39	2400186	2	Magnetic Catch	83	4600131	1	Key, 3/8" Square x 3"
40	2400146	1	Wrench, 3/4" Combination	84	2900397	1	Key, 10mm x 8mm x 80mm
41	4600121	1	Mast Top	85	4600124	1	Hydraulic Motor Adapter Plate
42	2900175	2	Capscrew, Soc. Hd., 3/8"-16 x 1"	86	2900357	4	Capscrew, Soc. Hd., 3/8"-16 x 1-1/2"
43	4600105	1	Handle Plate	87	4641010	1	Key, 1/2" Square x 4"
44	2400145	1	Mast Handle	88	2900087	4	Capscrew, Soc. Hd., #10-32 x 5/8"
45	4645016	1	Ceiling Jack	89	2900016	4	Flat Washer, #10 USS
				90	4600133	1	M-5 to M-2 Pattern Adapter Assembly (Includes #85 - #87)



VACUUM PUMP ASSEMBLY FOR M-1 AND M-2 (INCLUDES #1 - #18)**P/N 4244075 (110 VOLT) - P/N 4244076 (220 VOLT)****VACUUM PUMP ASSEMBLY FOR M-3 AND M-4 (INCLUDES #1 - #18, #22)****P/N 4244077 (110 VOLT) - P/N 4244079 (220 VOLT)****VACUUM PUMP ASSEMBLY FOR M-5 (INCLUDES #1 - #16, #23, #24)****P/N 4244090 (110 VOLT) - P/N 4244091 (220 VOLT)****VACUUM PUMP ASSEMBLY FOR A.P.V. BASE (INCLUDES #1 - #21)****P/N 4244078 (110 VOLT) - P/N 4244080 (220 VOLT)**

Diagram Number	Part No.	Qty. Req.	Description
1	2600016	1	Vacuum Pump, 110 Volt (Includes #2 - #9)
	2600017	1	Vacuum Pump, 220 Volt (Includes #2 - #9)
	2700167	1	(Repair Kit)
2	2700168	1	Muffler
3	2700171	1	Water Trap Jar Assembly (Includes #4 - #9)
4	2700170	1	Water Trap Jar
5	2700172	1	Float Ball
6	2700014	1	Water Trap Top
7	2700017	1	Water Jar Gasket
8	2700015	1	Brass Funnel Fitting
9	2700016	1	O-Ring
10	4699490	1	Hose Assembly, 9-1/4" for M-1, M-2, and M-5 (Includes #11 - #14)
	4699492	1	Hose Assembly, 60" for M-3 and M-4 (Includes #11 - #14)
	4699491	1	Hose Assembly, 14" for A.P.V. Base (Includes #11 - #13, #20, #21)
11	3200019	1	Fitting, 1/4" Hose Barb to 1/4" Male Pipe
12	3200017	2	Hose Clamp, 1/2" Pinch-on
13	4699430	1	Air Hose, 1/4" I.D. x 9-1/4" (For M-1, M-2, and M-5)
	4699432	1	Air Hose, 1/4" I.D. x 60" (For M-3 and M-4)
	4699431	1	Air Hose, 1/4" I.D. x 14" (For A.P.V. Base)
14	3200018	1	Fitting, 1/4" Hose Barb to 1/8" Male Pipe
15	3200010	2	Pipe Tee, 1/4" NPT (1 req'd for M-5)
16	2700164	1	Vacuum Gauge
17	3200007	3	Close Nipple, 1/4" NPT (2 req'd for A.P.V. Base)
18	3200035	1	Air Petcock
19	3200088	1	Pipe Nipple, 1/4" NPT x 2-1/2" (For A.P.V. Base only)
20	3200044	1	Fitting, 1/4" Hose Barb to 1/4" Ball End (For A.P.V. Base only)
21	3200043	1	Binks Fitting, 1/4" NPT (For A.P.V. Base only)
22	2700144	1	Handle (For M-3 and M-4 only)
23	3200060	2	Hex Nipple, 1/4" NPT (For M-5 only)
24	3200012	2	Street Elbow, 1/4" NPT (For M-5 only)

CORE BORE CONTROL PANEL PARTS LIST

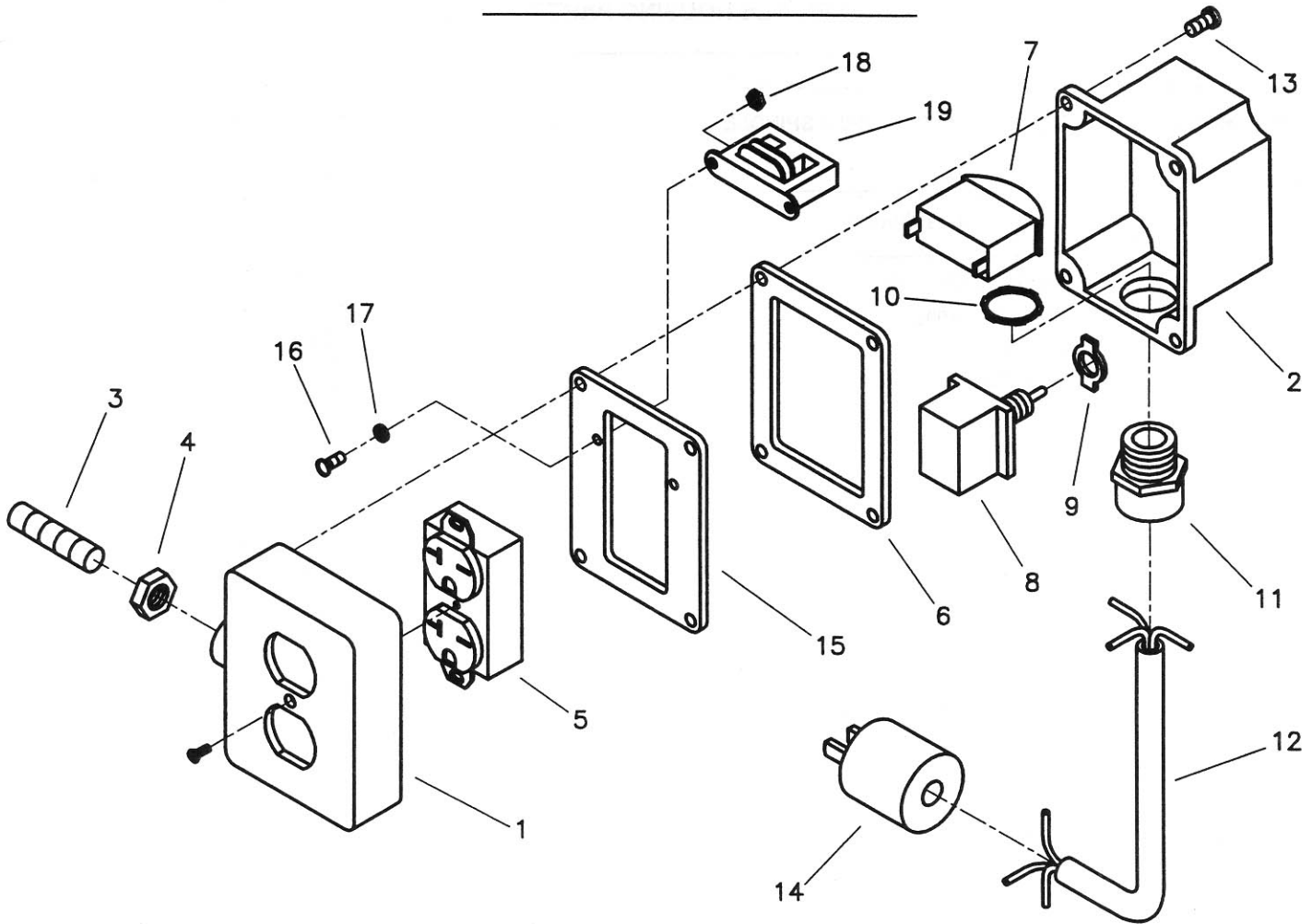


PART NO. 4243000 - 115 VOLT (Includes #1 - #21)

PART NO. 4243075 - 230 VOLT (Includes #1 - #16, #22)

Diagram Number	Part No.	Qty. Req.	Description	Diagram Number	Part No.	Qty. Req.	Description
1	4699440	1	Control Box For 115 Volt	11	2900050	4	Hex Nut, #10-24 For 115 Volt
	4699441	1	Control Box For 230 Volt				(5 Req'd For 230 Volt)
2	4699460	1	Cover Plate For 115 Volt	12	2800050	1	Sealing Lock Nut, 3/4"
	4699461	1	Cover Plate For 230 Volt	13	2800043	1	Cord Connector 3/4" For 115 Volt
3	2900159	4	Machine Screw, Round Hd., #10-24 x 5/8"		2800051	1	Cord Connector 3/4" For 230 Volt
4	2800016	1	Toggle Switch, 16 AMP	14	2900052	2	Capscrew, Hex Hd., 1/4"-20 x 1-1/4"
5	2800017	1	Toggle Switch, 20 AMP	15	2900024	2	Lock Washer, 1/4" Split
6	2800020	1	AMP Meter 115 Volt	16	4699500	1	Line Cord For 115 Volt
	2800021	1	AMP Meter 230 Volt		4699501	1	Line Cord For 230 Volt
7	2800018	1	Flanged Outlet, 15 AMP, 115 Volt	17	2800023	1	Plug, 30 AMP For 115 Volt
	2800045	1	Flanged Outlet, 15 AMP, 230 Volt	18	2800085	1	Transformer For 115 Volt
8	2800019	1	Flanged Outlet, 20 AMP, 115 Volt	19	2900090	2	Machine Screw, Round Hd., #6-32 x 1/2"
	2800046	1	Flanged Outlet, 20 AMP, 230 Volt				
9	2900172	1	Machine Screw, Round Hd., #10-24 x 1-1/4"	20	2900092	2	Lock Washer, #6 Split
				21	2900091	2	Hex Nut, #6-32
10	2900038	4	Lock Washer, #10 Split For 115 Volt (5 Req'd For 230 Volt)	22	2800067	1	Suppressor For 230 Volt (Not Illustrated)

SINGLE SWITCH CONTROL PANEL



PART NO. 4277537 - 110 VOLT (INCLUDES #1 - #19)

PART NO. 4277538 - 220 VOLT (INCLUDES #1 - #13)

Diagram Number	Part No.	Qty. Req.	Description
1	4699600	1	Switch Box
2	4699601	1	Switch Base
3	4699603	1	Stud, 1/2"-13 x 2"
4	2900129	1	Jam Nut, 1/2"-13
5	2800049	1	Receptacle, 110 Volt
	2800181	1	Receptacle, 220 Volt
6	2400074	1	Spacer Gasket
7	2800020	1	Ammeter, 110 Volt
	2800021	1	Ammeter, 220 Volt
8	2800017	1	Toggle Switch, 20 Amp
9	2400075	1	On-Off Plate
10	2800050	1	Sealing Lock Nut, 3/4"
11	2800043	1	Cord Connector, 3/4"
	2800051	1	Cord Connector for 220 Volt
12	4699602	1	Line Cord, 110 Volt
	4699501	1	Line Cord, 220 Volt
13	2900165	4	Machine Screw, Round Hd., #10-24 x 7/8"
14	2800023	1	Plug, 30 Amp
15	2400073	1	Mount Plate
16	2900090	2	Machine Screw, Round Hd., #6-32 x 1/2"
17	2900092	2	Lock Washer, #6 Split
18	2900091	2	Hex Nut, #6-32
19	2800085	1	Transformer, 110 Volt

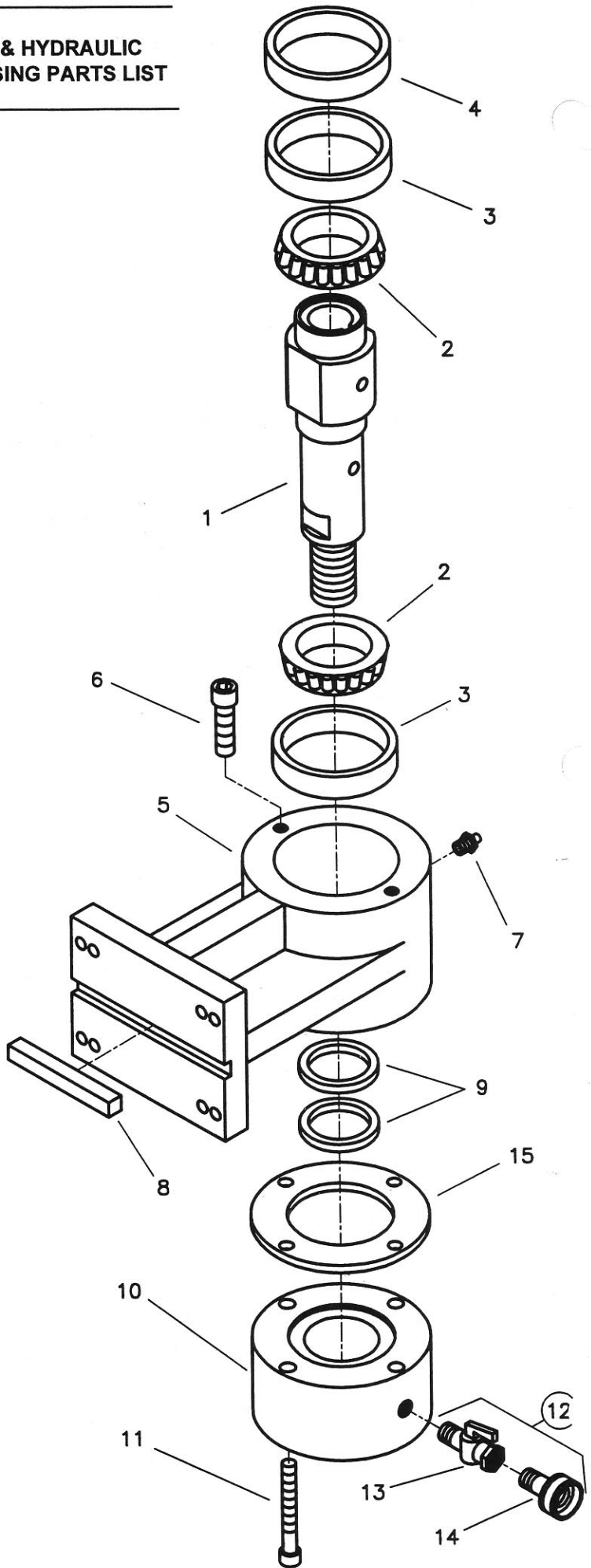
**PNEUMATIC & HYDRAULIC
SPINDLE HOUSING PARTS LIST**

**HYDRAULIC PILLOW BLOCK ASSEMBLY FOR 1.250-7 SPINDLE
PART #4277539**

Diagram Number	Part No.	Qty. Req.	Description
1	4699905	1	Spindle Shaft 1.250-7
2	2400013	2	Tapered Bearing
3	2400014	2	Bearing Race
4	4699901	1	Shim (Specify Width)
5	4699910	1	Pillow Block
6	2900119	2	Capscrew, Soc. Hd., 1/2"-13 x 1-3/4"
7	2900062	1	Grease Fitting, 1/8" NPT
8	4641010	1	Key, 1/2" Sq. x 4" Long
	4699922	1	Key, 1/2" to 3/8" x 4" Long (For M-1 Stand)
9	2700021	2	Water Seal
10	4699920	1	Water Housing
11	2900120	4	Capscrew, Soc. Hd., 3/8"-16 x 3"
12	4699921	1	Water Petcock With Hose Fitting (Includes #13, #14)
13	3200034	1	Water Petcock
14	3200042	1	Fitting, 1/4" Male Pipe to 3/4" Female Garden Hose

**HYDRAULIC PILLOW BLOCK ASSEMBLY FOR 1.875-7 SPINDLE
PART # 4277540**

Diagram Number	Part No.	Qty. Req.	Description
1	4699906	1	Spindle Shaft 1.875-7
2	2400066	2	Tapered Bearing
3	2400068	2	Bearing Race
4	4699901	1	Shim (Specify Width)
5	4699909	1	Pillow Block
6	2900119	2	Capscrew, Soc. Hd., 1/2"-13 x 1-3/4"
7	2900062	1	Grease Fitting, 1/8" NPT
8	4641010	1	Key, 1/2" Sq. x 4" Long
9	2400067	2	Water Seal
10	4699919	1	Water Housing
11	2900120	4	Capscrew, Soc. Hd., 3/8"-16 x 3"
12	4699921	1	Water Petcock With Hose Fitting (Includes #13, #14)
13	3200034	1	Water Petcock
14	3200042	1	Fitting, 1/4" Male Pipe to 3/4" Female Garden Hose
15	4699902	1	Loading Plate



M-2 ROLLER CARRIAGE

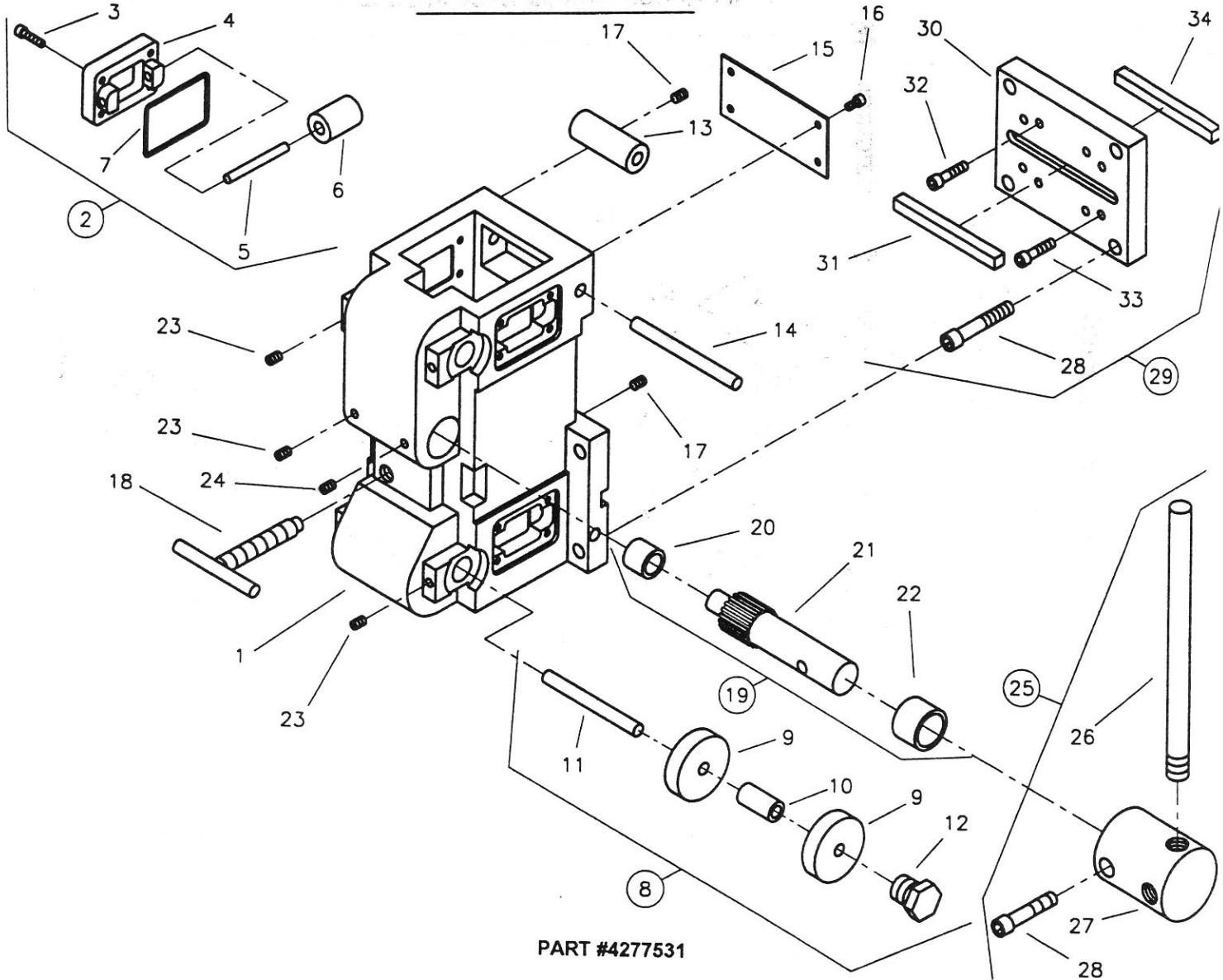
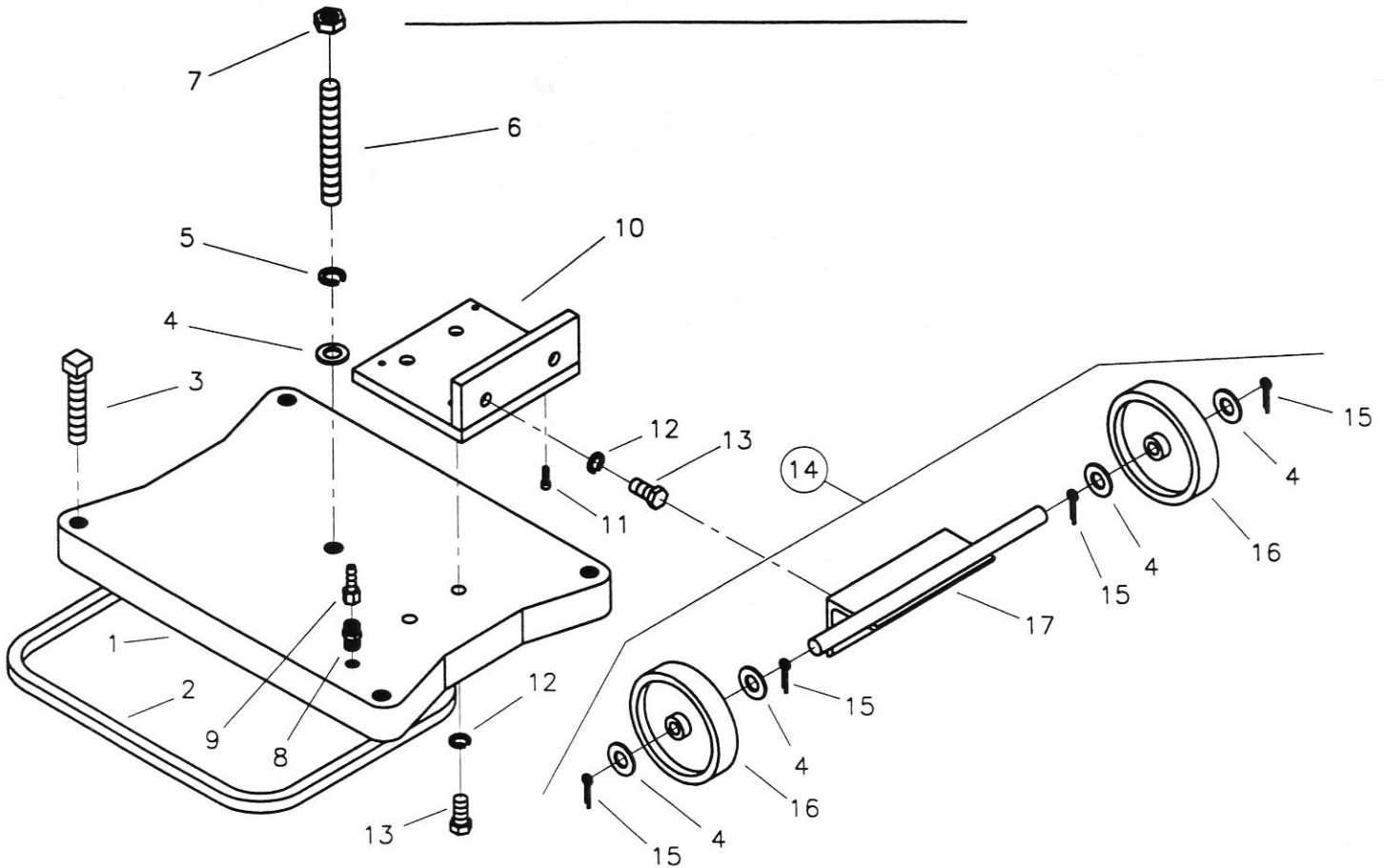


Diagram Number	Part No.	Qty. Req.	Description	Diagram Number	Part No.	Qty. Req.	Description
1	4647100	1	Carriage Body	20	2400005	1	Brass Bushing, Small
2	4647107	4	Side Roller Assembly (Includes #3 - #7)	21	4641022	1	Pinion Gear
3	2900116	16	Machine Screw, Soc. Hd., #10-24 x 3/4"	22	2400006	1	Brass Bushing, Large
4	4647102	4	Side Roller Housing	23	2900101	5	Setscrew, Soc. Hd., 1/4"-20 x 3/8"
5	4647106	4	Shaft, Side Roller	24	2900056	1	Setscrew, Soc. Hd., 1/4"-20 x 1/4"
6	4647113	4	Side Roller, Plastic	25	4641015	1	Spoke Handle Assembly (Includes #26 - #28)
7	2400011	8	Aluminum Gasket Shim, .005" Thick	26	4641016	4	Spoke Handle
	2400054	4	Aluminum Gasket Shim, .003" Thick	27	4641019	1	Handle Housing
8	4647108	2	Adjustable Roller Assembly (Includes #9 - #12)	28	2900124	5	Capscrew, Soc. Hd., 3/8"-16 x 1-3/4"
9	4647115	4	Adjustable Roller, Plastic	29	4641009	1	Motor Mount Assembly (Includes #28 - #34)
10	4647121	2	Spacer, Adjustable Roller	30	4641042	1	Motor Mount Plate
11	4647120	2	Shaft, Adjustable Roller	31	4641010	1	Key, 1/2" Sq. x 4"
12	4647122	4	Roller Adjuster	32	2900089	4	Capscrew, Soc. Hd., 1/4"-28 x 1" For Black & Decker Motors
13	4647114	2	Lower Roller, Plastic	33	2900088	4	Capscrew, Soc. Hd., 1/4"-20 x 1" For Milwaukee Motors
14	4647112	2	Shaft, Lower Roller	34	4645006	1	Key, 3/8" Sq. x 4"
15	2400009	1	Cover Plate				
16	2900117	4	Machine Screw, Soc. Hd., #10-24 x 3/8"				
17	2900118	2	Setscrew, Soc. Hd., #10-24 x 3/8"				
18	4647123	1	Carriage Lock				
19	4647124	1	Pinion Gear Assembly (Includes #20 - #24)				

ALL-PURPOSE VACUUM BASE ASSEMBLY



WITH WHEELS AND PUMP MOUNT - P/N 4247075 (INCLUDES #1 - #17)
 WITHOUT WHEELS AND PUMP MOUNT - P/N 4247000 (INCLUDES #1 - #9)

Diagram Number	Part No.	Qty. Req.	Description
1	4643025	1	All Purpose Vacuum Base Only (For Wheel and Pump Mount)
	4643026	1	All Purpose Vacuum Base Only (Without Wheel and Pump Mount)
2	4643027	1	Vacuum Gasket
3	2900081	4	Setscrew, Sq. Hd., 5/8"-11 x 3"
4	2900128	5	Flat Washer, 5/8" U.S.
5	2900113	1	Lock Washer, 5/8" Split
6	4643024	1	Threaded Rod, 5/8"-11 x 5"
7	2900112	1	Hex Nut, 5/8"-11
8	3200043	1	Binks Fitting, 1/4" NPT
9	3200044	1	Fitting, 1/4" Hose Barb to 1/4" Ball End
10	4643035	1	Pump and Wheel Bracket
11	2900087	4	Capscrew, Soc. Hd., #10-32 x 5/8"
12	2900084	4	Lock Washer, 1/2" Split
13	2900086	4	Capscrew, Hex Hd., 1/2"-13 x 1"
14	4643048	1	Wheel Assembly (includes #4, #15 - #17)
15	2900085	4	Cotter Pin, 3/32" x 1"
16	2400008	2	Wheel, 4"
17	4645033	1	Wheel Mount Bracket

EQUIPMENT AND PARTS WARRANTY

Diamond Products warrants all equipment manufactured by it against defects in workmanship or materials for a period of one (1) year from the date of shipment to Customer.

The responsibility of Diamond Products under this Warranty is limited to replacement or repair of defective parts at Diamond Products' Elyria, Ohio factory, or at a point designated by it, of such parts as shall appear to us upon inspection at such point, to have been defective in material or workmanship, with expense for transportation and labor borne by Customer.

In no event shall Diamond Products be liable for consequential or incidental damages arising out of the failure of any Product to operate properly.

Integral units such as engines, electric motors, batteries, transmissions, etc., are excluded from this Warranty and are subject to the prime manufacturer's warranty.

THIS WARRANTY IS IN LIEU OF ALL OTHER WARRANTIES, EXPRESSED OR IMPLIED, AND ALL SUCH OTHER WARRANTIES ARE HEREBY DISCLAIMED.