



BS-2
REMOTE CONTROL
PARTS LIST

February 2016

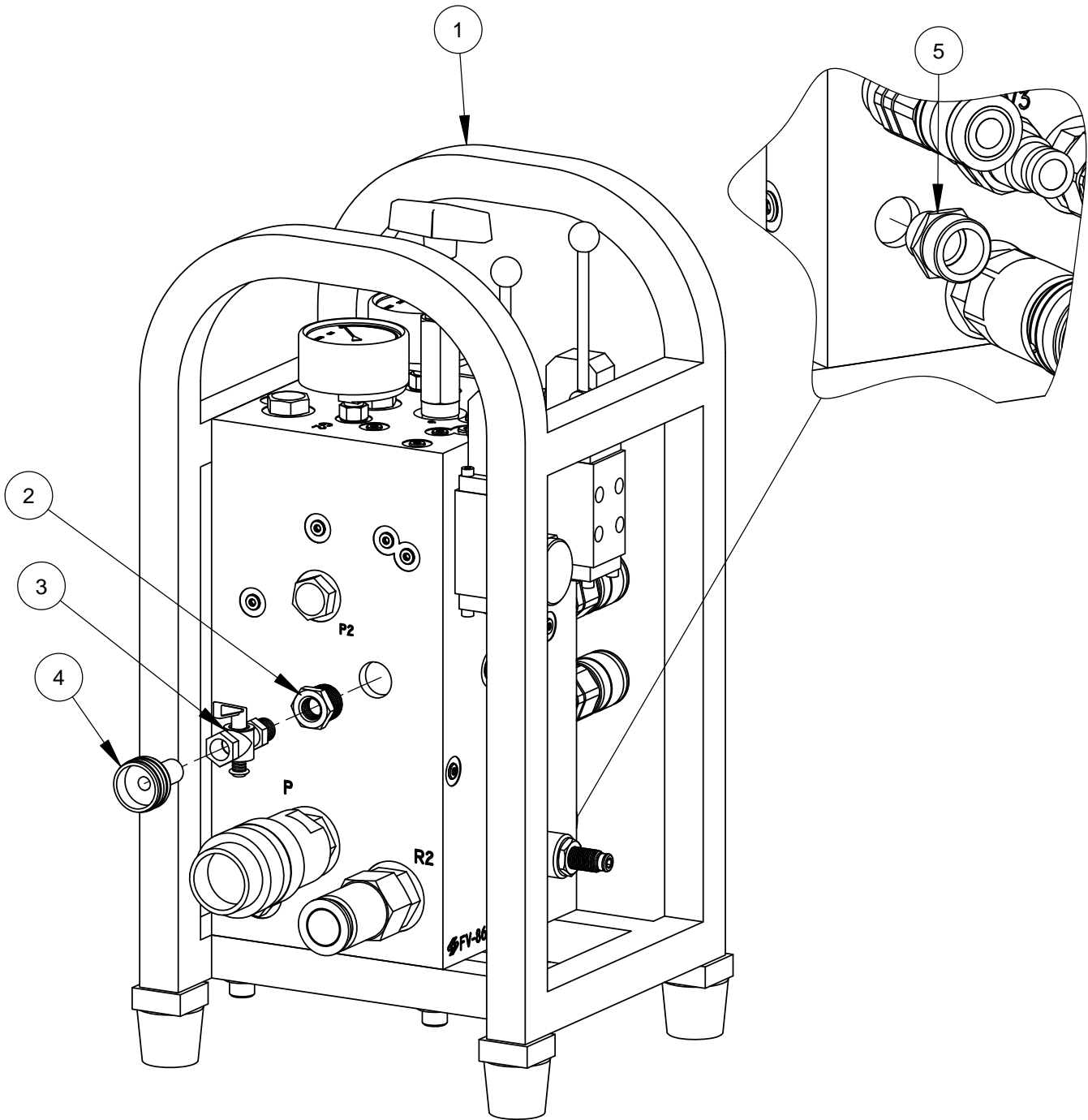
Part # 1803049

Table of Contents

<u>Description</u>	<u>Page No.</u>
BS-2 Remote Control with Water Fittings & Hoses	5
BS-2 Remote Control (Front).....	6
BS-2 Remote Control (Rear)	8
BS-2 Remote Control (Left Side).....	10
BS-2 Remote Control (Right Side)	12
BS-2 Remote Control (Top).....	14
BS-2 Remote Control (Bottom).....	16
Notes	18
Warranty	20

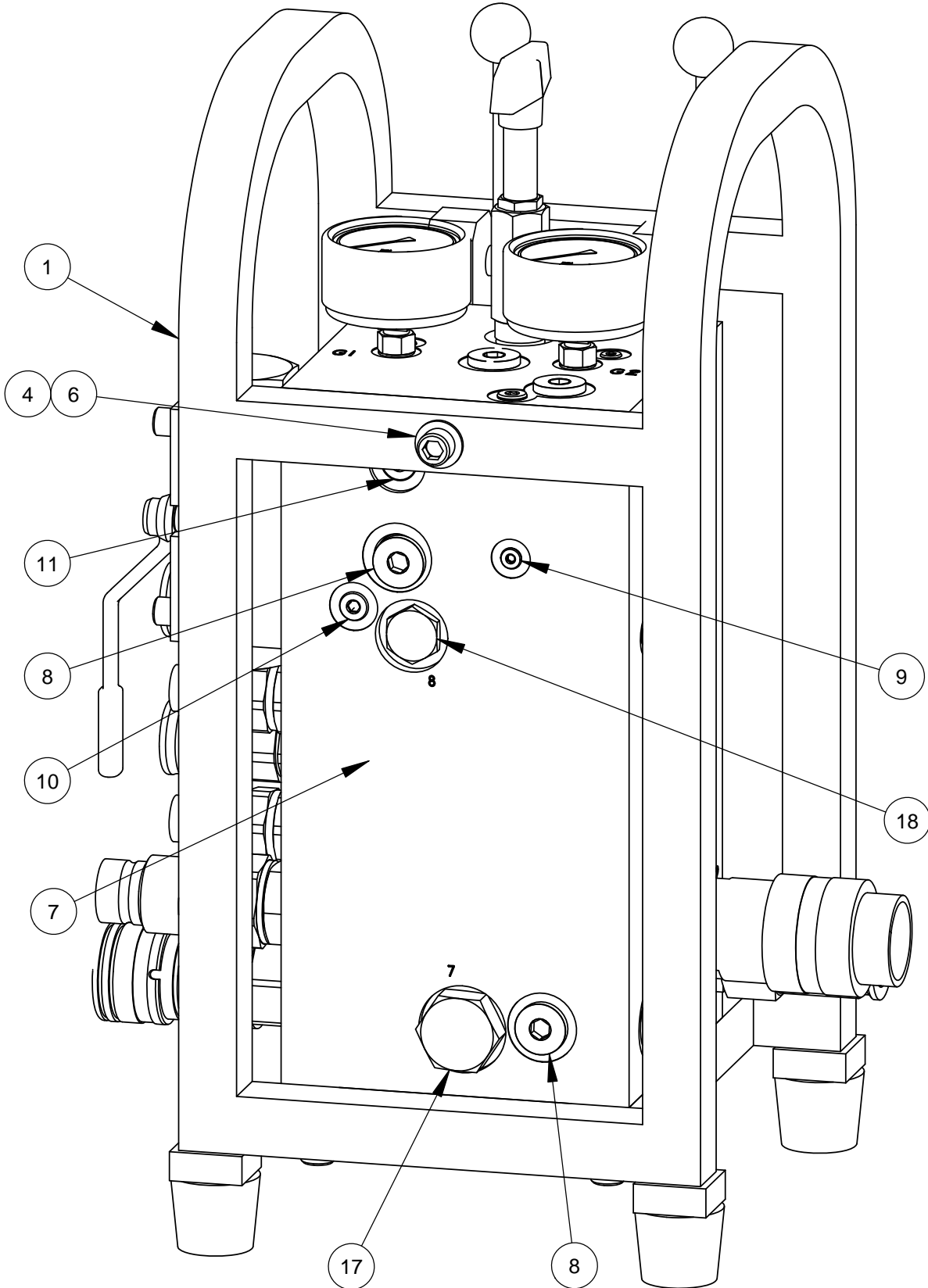
Intentionally Blank

BS-2 Remote Control with Water Fittings & Hoses
#580012



ITEM	PART NO.	QTY.	DESCRIPTION
1	2702356	1	BS-2
2	3200229	1	Reducer, 1/2" M. to 1/4" F. Pipe
3	3200034	1	Petcock, 1/4" MPT - FPT
4	3200042	1	Fitting, 3/4" F. Garden to 1/4" M. Pipe
5	3200155	1	Fitting, 1/2" M. Pipe to 3/4" M. Garden
6	3400485	1	Hoses, 4PC 25' Feed (Not Shown)
7	3401892	1	Hoses, 3PC 25' Drive (Not Shown)
8	3400273	1	Hose, 100' Case Drain (Not Shown)

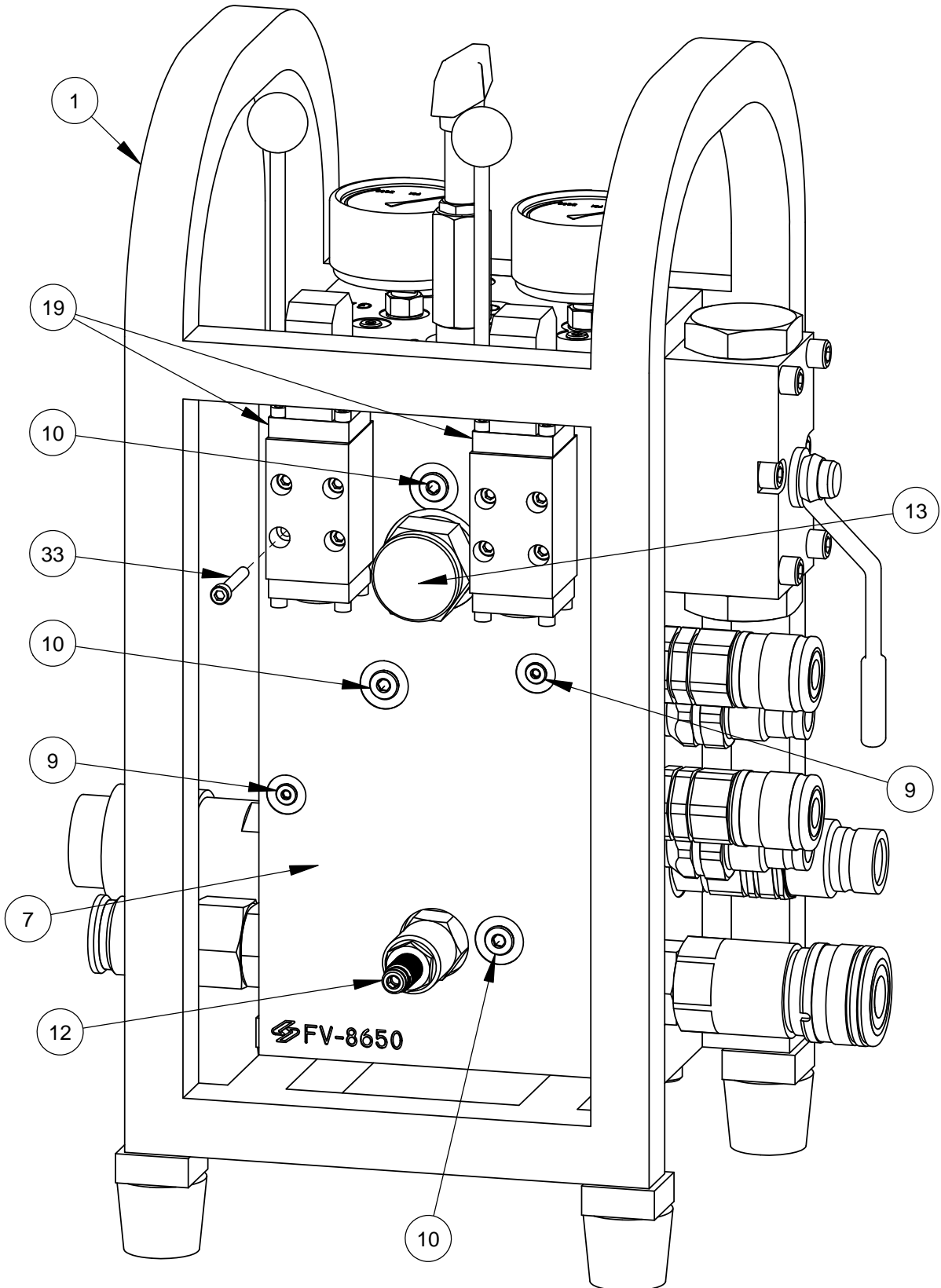
**BS-2 Remote Control #2702356
(Front)**



BS-2 Remote Control
#2702356

ITEM	PART NO.	QTY.	DESCRIPTION
1	2503174	1	Frame
2	2503175	4	Rubber Bumper
3	2900088	4	Cap Screw, Soc. Hd., 1/4-20 x 1"
4	2900357	5	Cap Screw, Soc. Hd., 3/8-16 x 1-1/2"
5	2900009	4	Flat Washer, 1/4" SAE
6	2900014	5	Flat Washer, 3/8" SAE
7	3201423	1	Valve Body FV-8650
8	3202845	8	SAE-8 Plug
9	3201435	14	SAE-2 Plug
10	3201436	11	SAE-4 Plug
11	3201440	3	SAE-6 Plug
12	3202319	1	Relief Valve
13	3206381	1	Flow Control Valve
14	2503173	1	T-Handle
15	2503176	1	Thread Adapter
16	3201427	1	Relief Valve
17	3201431	1	Check Valve
18	3201441	1	Check Valve
19	3201428	2	D02 Manual Valve
	3201607	1	Handle
	2501756	1	1" Ball Knob
20	3201426	1	3-Way Ball Valve
21	3201430	1	Pressure Gauge, 3000 PSI
22	3201429	1	Pressure Gauge, 5000 PSI
23	3200263	4	Adapter, 3/8" O-Ring to 3/8" M. JIC
24	3200265	4	Adapter, 3/4" O-Ring to 3/4" M. JIC
25	3201289	1	Quick Coupling, 3/4"
26	3201290	1	Quick Coupling, 3/4"
27	3200933	1	Quick Coupling, 5/8"
28	3200932	1	Quick Coupling, 5/8"
29	3201293	2	Quick Coupling, 3/8"
30	3201292	2	Quick Coupling, 3/8"
31	3201432	4	O-Ring -906
32	3201433	4	O-Ring -912
33	2900680	8	HX-SHCS 0.19-24x1.375x1-N
34	2900681	2	HX-SHCS 0.3125-18x2x1.375-N
35	2900191	4	Cap Screw, Soc. Hd., 5/16-18 x 2-1/2"

BS-2 Remote Control #2702356
(Back)



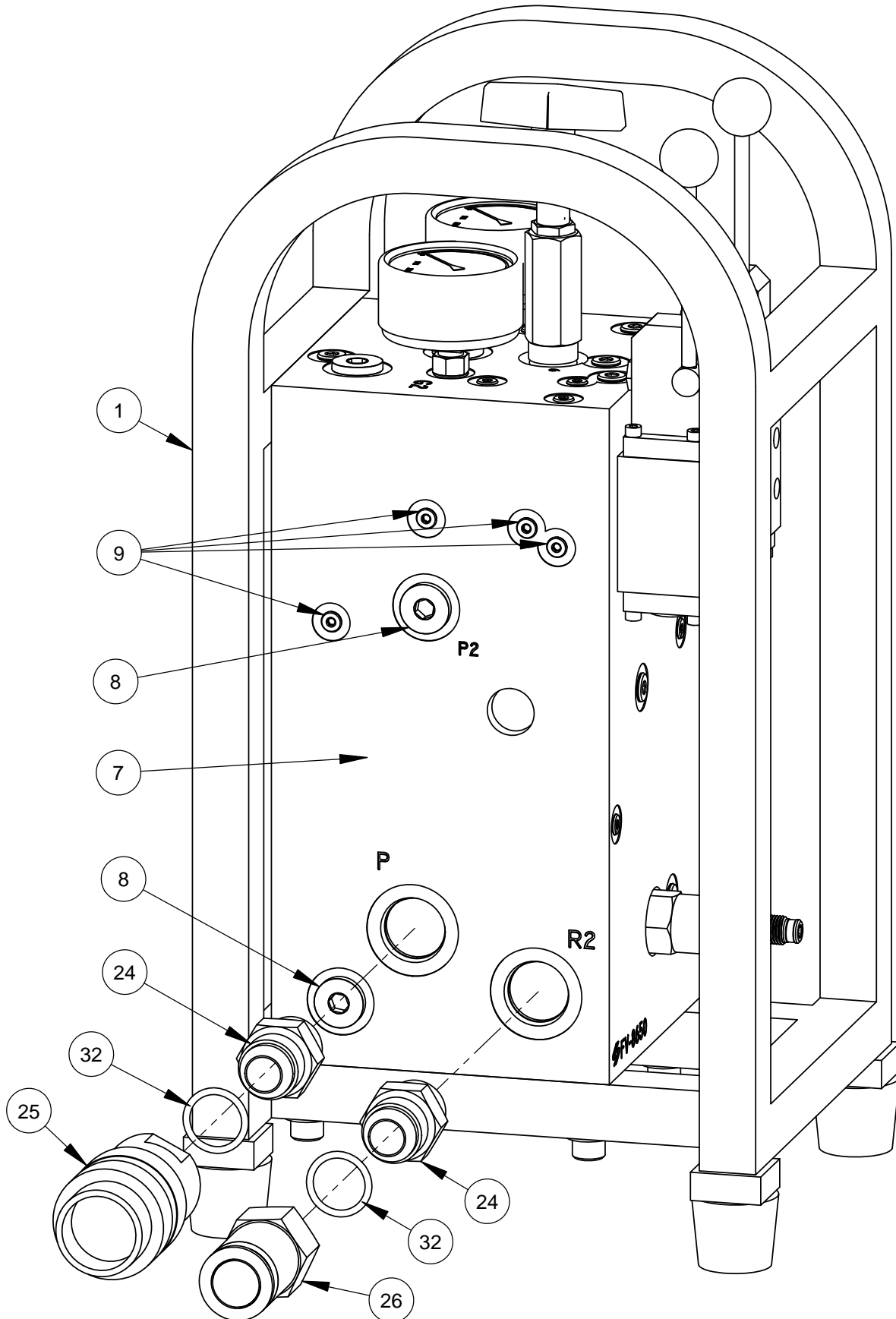
BS-2 Remote Control
#2702356

ITEM	PART NO.	QTY.	DESCRIPTION
1	2503174	1	Frame
2	2503175	4	Rubber Bumper
3	2900088	4	Cap Screw, Soc. Hd., 1/4-20 x 1"
4	2900357	5	Cap Screw, Soc. Hd., 3/8-16 x 1-1/2"
5	2900009	4	Flat Washer, 1/4" SAE
6	2900014	5	Flat Washer, 3/8" SAE
7	3201423	1	Valve Body FV-8650
8	3202845	8	SAE-8 Plug
9	3201435	14	SAE-2 Plug
10	3201436	11	SAE-4 Plug
11	3201440	3	SAE-6 Plug
12	3202319	1	Relief Valve
13	3206381	1	Flow Control Valve
14	2503173	1	T-Handle
15	2503176	1	Thread Adapter
16	3201427	1	Relief Valve
17	3201431	1	Check Valve
18	3201441	1	Check Valve
19	3201428	2	D02 Manual Valve
	3201607	1	Handle
	2501756	1	1" Ball Knob
20	3201426	1	3-Way Ball Valve
21	3201430	1	Pressure Gauge, 3000 PSI
22	3201429	1	Pressure Gauge, 5000 PSI
23	3200263	4	Adapter, 3/8" O-Ring to 3/8" M. JIC
24	3200265	4	Adapter, 3/4" O-Ring to 3/4" M. JIC
25	3201289	1	Quick Coupling, 3/4"
26	3201290	1	Quick Coupling, 3/4"
27	3200933	1	Quick Coupling, 5/8"
28	3200932	1	Quick Coupling, 5/8"
29	3201293	2	Quick Coupling, 3/8"
30	3201292	2	Quick Coupling, 3/8"
31	3201432	4	O-Ring -906
32	3201433	4	O-Ring -912
33	2900680	8	HX-SHCS 0.19-24x1.375x1-N
34	2900681	2	HX-SHCS 0.3125-18x2x1.375-N
35	2900191	4	Cap Screw, Soc. Hd., 5/16-18 x 2-1/2"

BS-2 Remote Control
#2702356

ITEM	PART NO.	QTY.	DESCRIPTION
1	2503174	1	Frame
2	2503175	4	Rubber Bumper
3	2900088	4	Cap Screw, Soc. Hd., 1/4-20 x 1"
4	2900357	5	Cap Screw, Soc. Hd., 3/8-16 x 1-1/2"
5	2900009	4	Flat Washer, 1/4" SAE
6	2900014	5	Flat Washer, 3/8" SAE
7	3201423	1	Valve Body FV-8650
8	3202845	8	SAE-8 Plug
9	3201435	14	SAE-2 Plug
10	3201436	11	SAE-4 Plug
11	3201440	3	SAE-6 Plug
12	3202319	1	Relief Valve
13	3206381	1	Flow Control Valve
14	2503173	1	T-Handle
15	2503176	1	Thread Adapter
16	3201427	1	Relief Valve
17	3201431	1	Check Valve
18	3201441	1	Check Valve
19	3201428	2	D02 Manual Valve
	3201607	1	Handle
	2501756	1	1" Ball Knob
20	3201426	1	3-Way Ball Valve
21	3201430	1	Pressure Gauge, 3000 PSI
22	3201429	1	Pressure Gauge, 5000 PSI
23	3200263	4	Adapter, 3/8" O-Ring to 3/8" M. JIC
24	3200265	4	Adapter, 3/4" O-Ring to 3/4" M. JIC
25	3201289	1	Quick Coupling, 3/4"
26	3201290	1	Quick Coupling, 3/4"
27	3200933	1	Quick Coupling, 5/8"
28	3200932	1	Quick Coupling, 5/8"
29	3201293	2	Quick Coupling, 3/8"
30	3201292	2	Quick Coupling, 3/8"
31	3201432	4	O-Ring -906
32	3201433	4	O-Ring -912
33	2900680	8	HX-SHCS 0.19-24x1.375x1-N
34	2900681	2	HX-SHCS 0.3125-18x2x1.375-N
35	2900191	4	Cap Screw, Soc. Hd., 5/16-18 x 2-1/2"

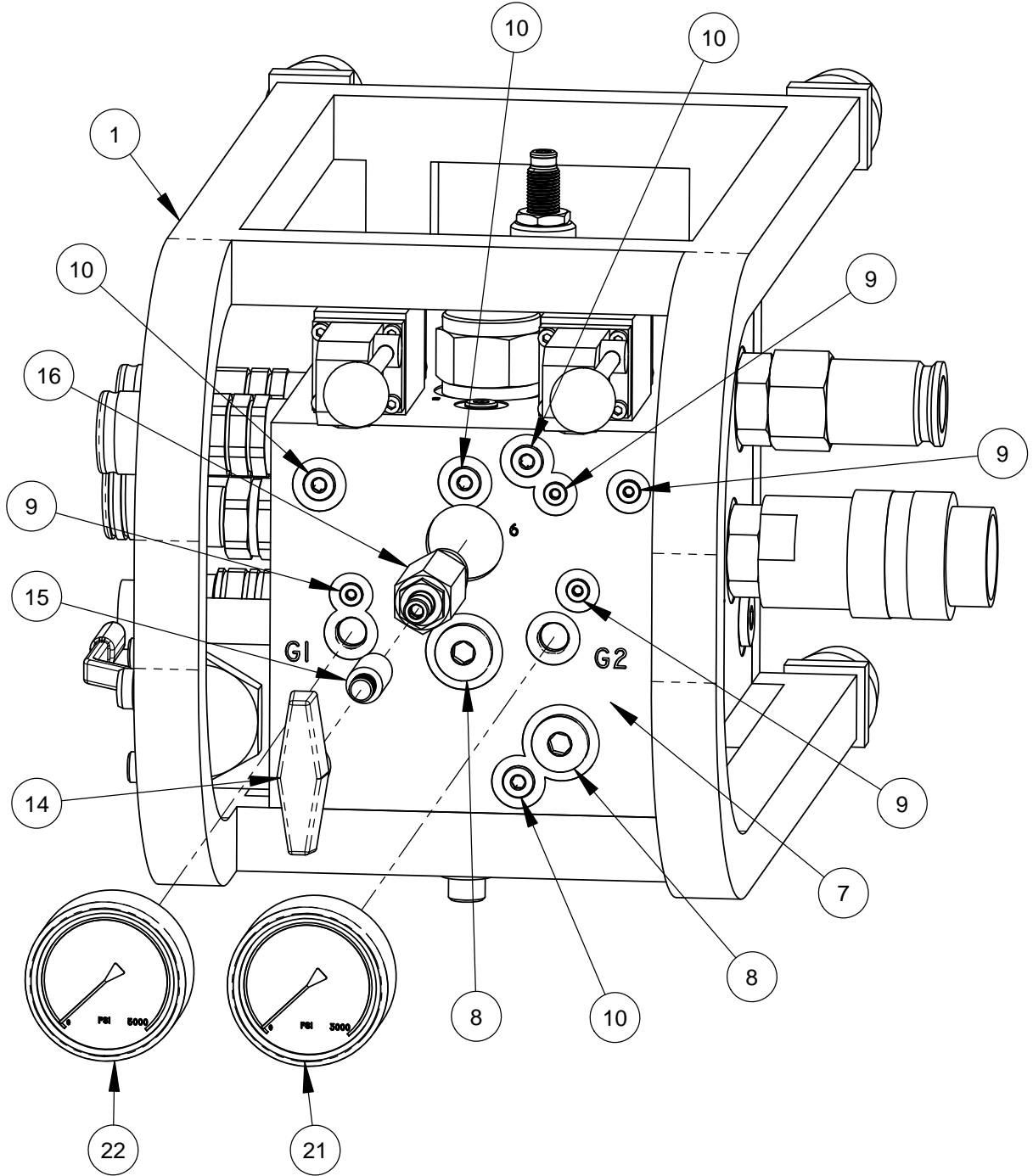
**BS-2 Remote Control #2702356
(Right Side)**



BS-2 Remote Control
#2702356

ITEM	PART NO.	QTY.	DESCRIPTION
1	2503174	1	Frame
2	2503175	4	Rubber Bumper
3	2900088	4	Cap Screw, Soc. Hd., 1/4-20 x 1"
4	2900357	5	Cap Screw, Soc. Hd., 3/8-16 x 1-1/2"
5	2900009	4	Flat Washer, 1/4" SAE
6	2900014	5	Flat Washer, 3/8" SAE
7	3201423	1	Valve Body FV-8650
8	3202845	8	SAE-8 Plug
9	3201435	14	SAE-2 Plug
10	3201436	11	SAE-4 Plug
11	3201440	3	SAE-6 Plug
12	3202319	1	Relief Valve
13	3206381	1	Flow Control Valve
14	2503173	1	T-Handle
15	2503176	1	Thread Adapter
16	3201427	1	Relief Valve
17	3201431	1	Check Valve
18	3201441	1	Check Valve
19	3201428	2	D02 Manual Valve
	3201607	1	Handle
	2501756	1	1" Ball Knob
20	3201426	1	3-Way Ball Valve
21	3201430	1	Pressure Gauge, 3000 PSI
22	3201429	1	Pressure Gauge, 5000 PSI
23	3200263	4	Adapter, 3/8" O-Ring to 3/8" M. JIC
24	3200265	4	Adapter, 3/4" O-Ring to 3/4" M. JIC
25	3201289	1	Quick Coupling, 3/4"
26	3201290	1	Quick Coupling, 3/4"
27	3200933	1	Quick Coupling, 5/8"
28	3200932	1	Quick Coupling, 5/8"
29	3201293	2	Quick Coupling, 3/8"
30	3201292	2	Quick Coupling, 3/8"
31	3201432	4	O-Ring -906
32	3201433	4	O-Ring -912
33	2900680	8	HX-SHCS 0.19-24x1.375x1-N
34	2900681	2	HX-SHCS 0.3125-18x2x1.375-N
35	2900191	4	Cap Screw, Soc. Hd., 5/16-18 x 2-1/2"

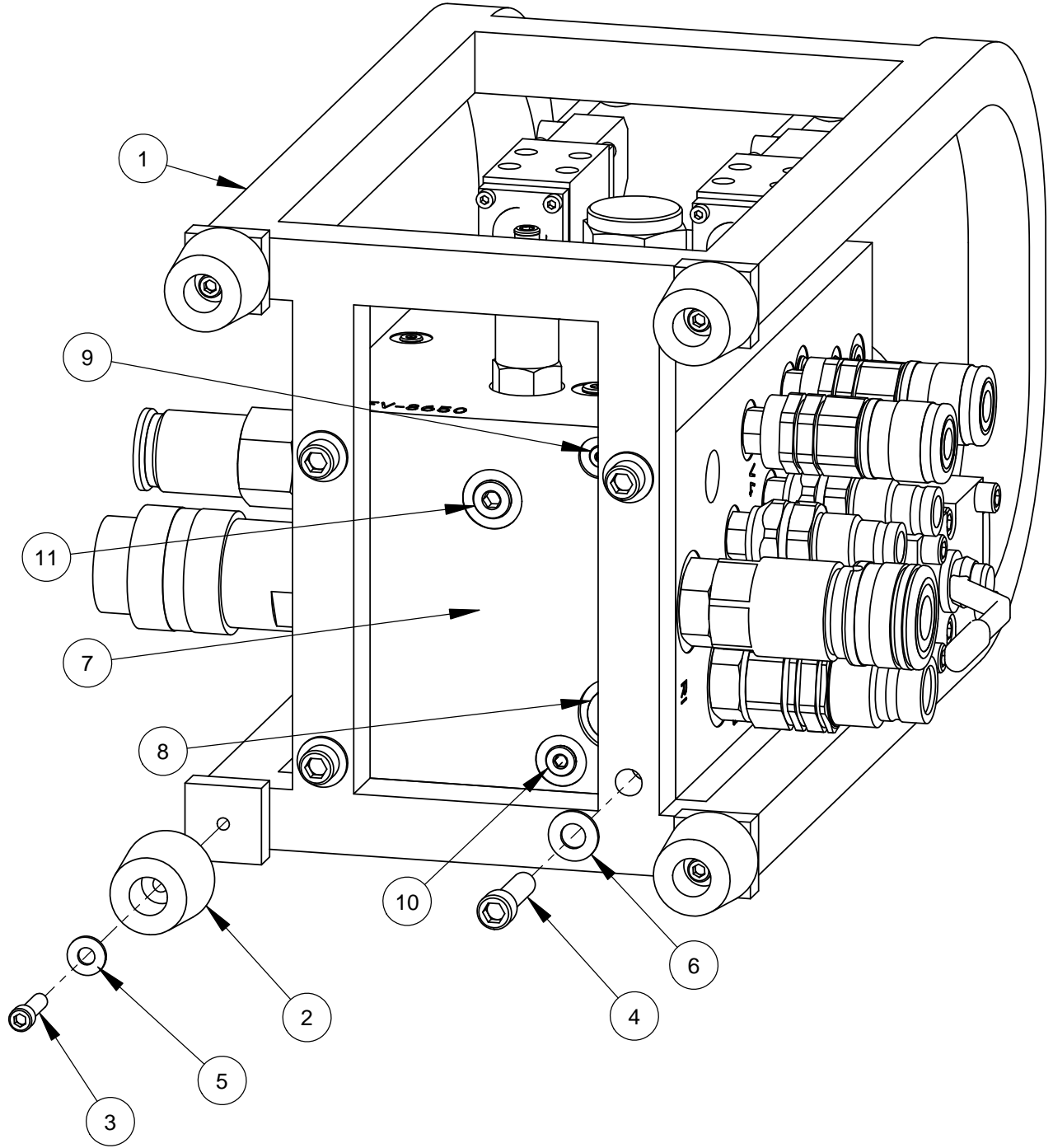
BS-2 Remote Control #2702356
(Top)



BS-2 Remote Control
#2702356

ITEM	PART NO.	QTY.	DESCRIPTION
1	2503174	1	Frame
2	2503175	4	Rubber Bumper
3	2900088	4	Cap Screw, Soc. Hd., 1/4-20 x 1"
4	2900357	5	Cap Screw, Soc. Hd., 3/8-16 x 1-1/2"
5	2900009	4	Flat Washer, 1/4" SAE
6	2900014	5	Flat Washer, 3/8" SAE
7	3201423	1	Valve Body FV-8650
8	3202845	8	SAE-8 Plug
9	3201435	14	SAE-2 Plug
10	3201436	11	SAE-4 Plug
11	3201440	3	SAE-6 Plug
12	3202319	1	Relief Valve
13	3206381	1	Flow Control Valve
14	2503173	1	T-Handle
15	2503176	1	Thread Adapter
16	3201427	1	Relief Valve
17	3201431	1	Check Valve
18	3201441	1	Check Valve
19	3201428	2	D02 Manual Valve
	3201607	1	Handle
	2501756	1	1" Ball Knob
20	3201426	1	3-Way Ball Valve
21	3201430	1	Pressure Gauge, 3000 PSI
22	3201429	1	Pressure Gauge, 5000 PSI
23	3200263	4	Adapter, 3/8" O-Ring to 3/8" M. JIC
24	3200265	4	Adapter, 3/4" O-Ring to 3/4" M. JIC
25	3201289	1	Quick Coupling, 3/4"
26	3201290	1	Quick Coupling, 3/4"
27	3200933	1	Quick Coupling, 5/8"
28	3200932	1	Quick Coupling, 5/8"
29	3201293	2	Quick Coupling, 3/8"
30	3201292	2	Quick Coupling, 3/8"
31	3201432	4	O-Ring -906
32	3201433	4	O-Ring -912
33	2900680	8	HX-SHCS 0.19-24x1.375x1-N
34	2900681	2	HX-SHCS 0.3125-18x2x1.375-N
35	2900191	4	Cap Screw, Soc. Hd., 5/16-18 x 2-1/2"

**BS-2 Remote Control #2702356
(Bottom)**



BS-2 Remote Control
#2702356

ITEM	PART NO.	QTY.	DESCRIPTION
1	2503174	1	Frame
2	2503175	4	Rubber Bumper
3	2900088	4	Cap Screw, Soc. Hd., 1/4-20 x 1"
4	2900357	5	Cap Screw, Soc. Hd., 3/8-16 x 1-1/2"
5	2900009	4	Flat Washer, 1/4" SAE
6	2900014	5	Flat Washer, 3/8" SAE
7	3201423	1	Valve Body FV-8650
8	3202845	8	SAE-8 Plug
9	3201435	14	SAE-2 Plug
10	3201436	11	SAE-4 Plug
11	3201440	3	SAE-6 Plug
12	3202319	1	Relief Valve
13	3206381	1	Flow Control Valve
14	2503173	1	T-Handle
15	2503176	1	Thread Adapter
16	3201427	1	Relief Valve
17	3201431	1	Check Valve
18	3201441	1	Check Valve
19	3201428	2	D02 Manual Valve
	3201607	1	Handle
	2501756	1	1" Ball Knob
20	3201426	1	3-Way Ball Valve
21	3201430	1	Pressure Gauge, 3000 PSI
22	3201429	1	Pressure Gauge, 5000 PSI
23	3200263	4	Adapter, 3/8" O-Ring to 3/8" M. JIC
24	3200265	4	Adapter, 3/4" O-Ring to 3/4" M. JIC
25	3201289	1	Quick Coupling, 3/4"
26	3201290	1	Quick Coupling, 3/4"
27	3200933	1	Quick Coupling, 5/8"
28	3200932	1	Quick Coupling, 5/8"
29	3201293	2	Quick Coupling, 3/8"
30	3201292	2	Quick Coupling, 3/8"
31	3201432	4	O-Ring -906
32	3201433	4	O-Ring -912
33	2900680	8	HX-SHCS 0.19-24x1.375x1-N
34	2900681	2	HX-SHCS 0.3125-18x2x1.375-N
35	2900191	4	Cap Screw, Soc. Hd., 5/16-18 x 2-1/2"

EQUIPMENT AND PARTS WARRANTY

Diamond Products warrants all equipment manufactured by it against defects in workmanship or materials for a period of one (1) year from the date of shipment to Customer.

The responsibility of Diamond Products under this Warranty is limited to replacement or repair of defective parts at Diamond Products' Elyria, Ohio factory, or at a point designated by it, of such parts as shall appear to us upon inspection at such parts, to have been defective in material or workmanship, with expense for transportation and labor borne by Customer.

In no event shall Diamond Products be liable for consequential or incidental damages arising out of the failure of any Product to operate properly.

Integral units such as engines, electric motors, batteries, transmissions, etc., are excluded from this Warranty and are subject to the prime manufacturer's warranty.

THIS WARRANTY IS IN LIEU OF ALL OTHER WARRANTIES, EXPRESSED OR IMPLIED, AND ALL SUCH OTHER WARRANTIES ARE HEREBY DISCLAIMED.



333 Prospect Street, Elyria, Ohio 44035
(440) 323-4616 • (800) 321-5336 • Fax (800) 634-4035
www.diamondproducts.com