



CONCRETE SAW
PARTS LIST

MODEL

CC125BXL-EE6

230V

February 2021

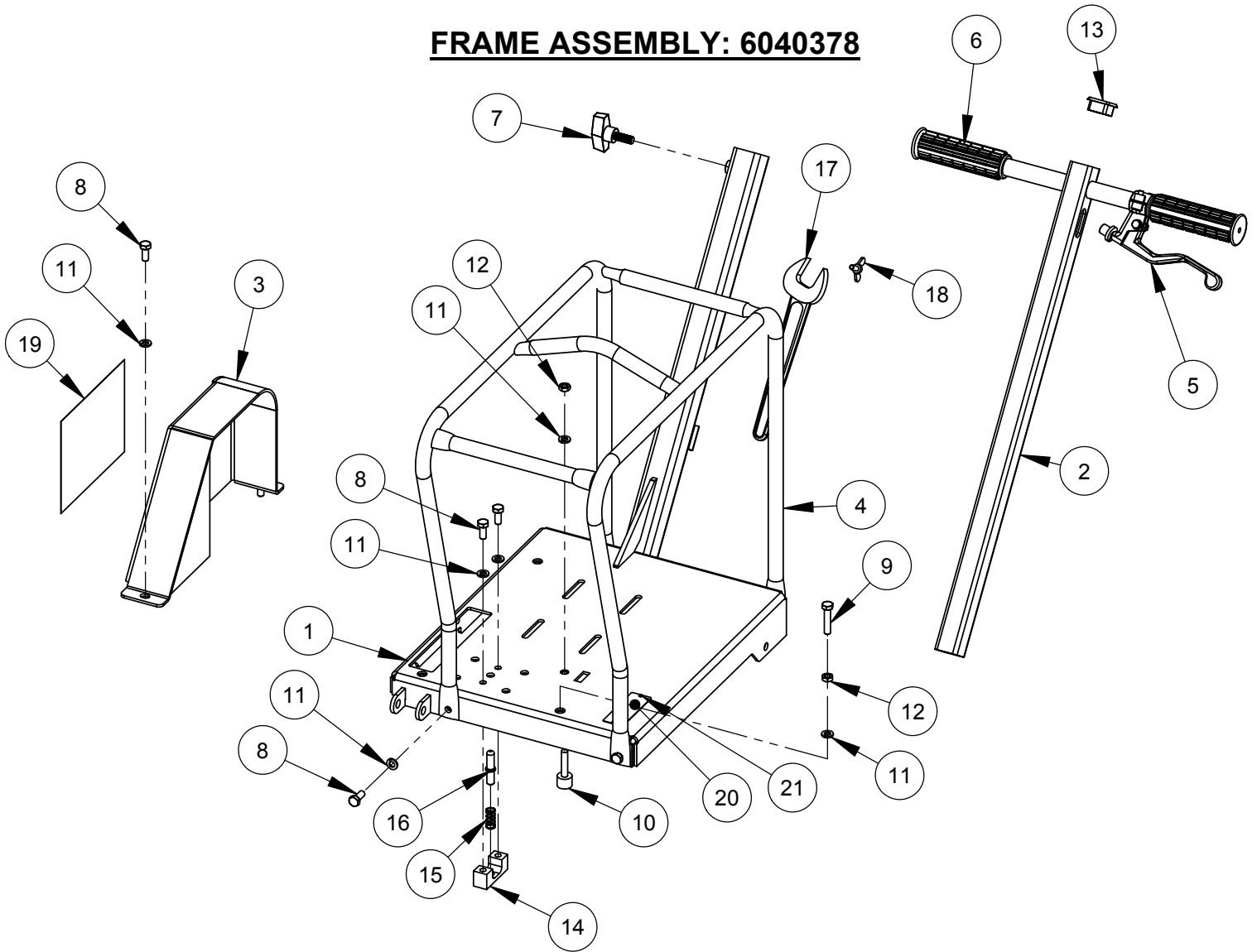
Table of Contents

<u>Description</u>	<u>Page No.</u>
Frame Assembly.....	3
Axle Assembly.....	4
Motor Assembly.....	5
Switch Assembly.....	6
Blade Shaft Assembly.....	7
Spring Box Assembly 6”	8-9
Pointer Assembly.....	10
Warranty.....	12

Quick Reference Replacement/Service Parts

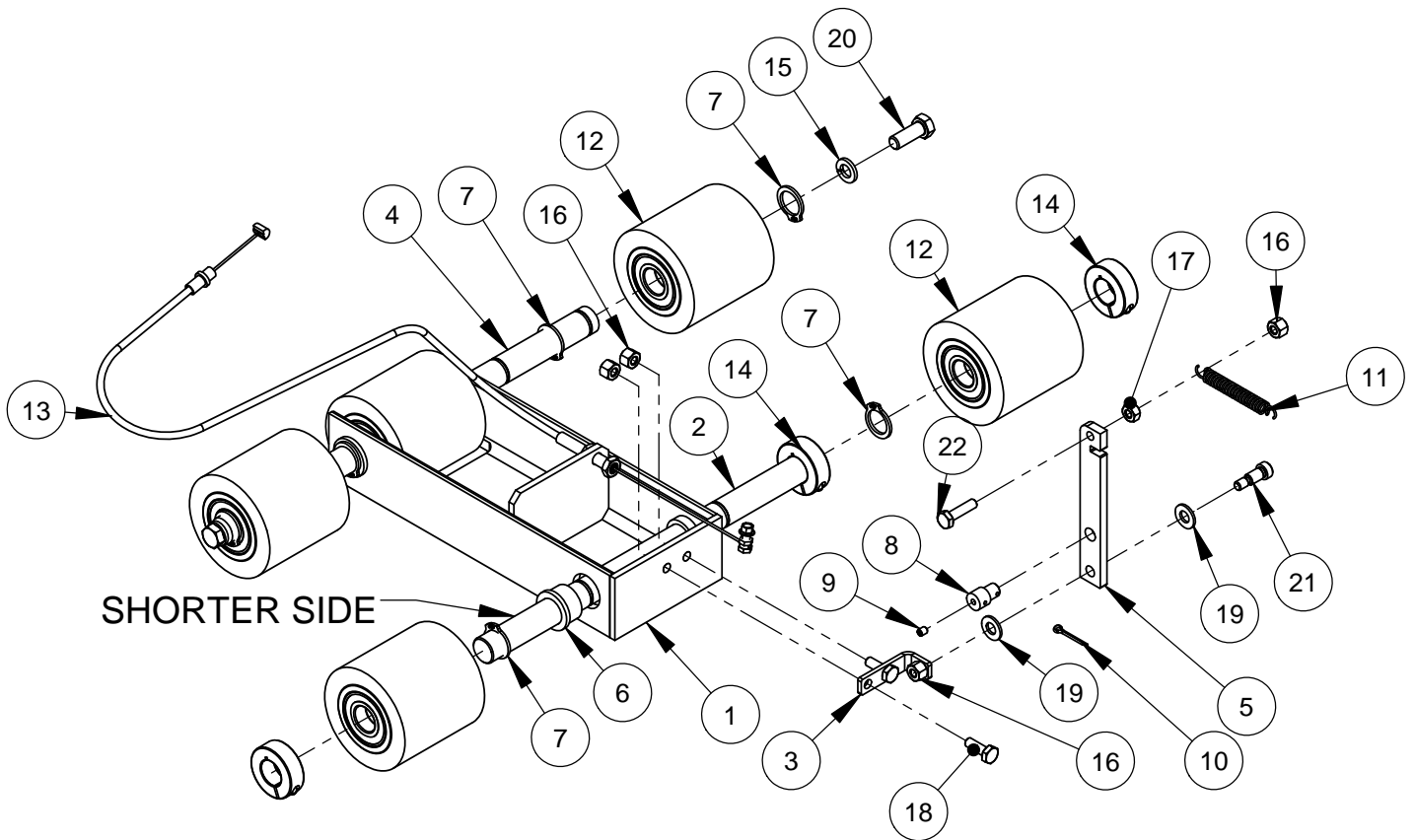
<u>DP Part No.</u>	<u>Description</u>
2505180	Skid Plate - 6/8” Blade - .156 Slot
2500820	(1) V-Belt-3V280

FRAME ASSEMBLY: 6040378



ITEM	PART NO.	QTY.	DESCRIPTION
1	6040748	1	Frame Weldment
2	6040749	1	Handle Weldment
3	6040755	1	Guard, Belt
4	6040615	1	Lift Cage
5	6010619	1	Bracket, Handlebar Lever
6	2500001	2	7/8" Handle Grip
7	2503942	1	T Handle Locking Knob /w 3/8-16 Stud
8	2900019	8	Cap Screw, Hex Hd., 5/16-18 x 3/4"
9	2900508	1	Cap Screw, Hex Hd., 5/16-18 x 1-1/2"
10	2504808	1	Bumper w/ 5/16-18 threaded stud
11	2900031	10	Lock Washer, 5/16" Split
12	2900283	2	Jam Nut, 5/16-18
13	2503823	1	Plug, 1-1/4 Square Tube
14	6040560	1	Blade Stop Block
15	2501192	1	Spring, Comp. .48 x .042 x 1.00 Long
16	6040561	1	Blade Stop
17	2500256	1	Wrench, 1-1/16" Open End
18	2900307	1	Wing Screw, M6 x 16mm
19	1802419	1	CC150XL Core Cut Decal
20	1800169	1	Serial Number Plate, US
21	2900053	2	Rivet, 3/32" Dia.

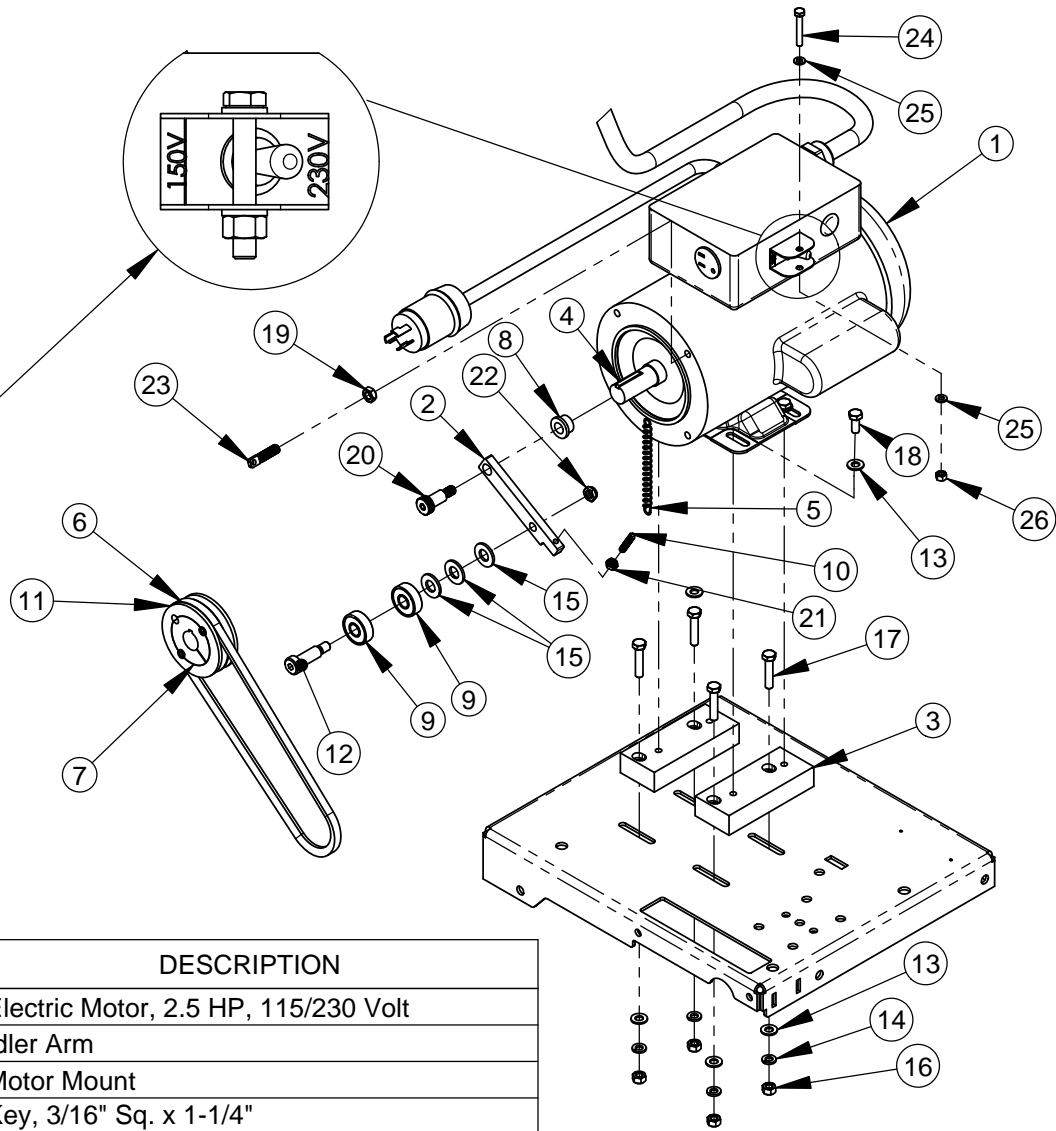
AXLE ASSEMBLY: 6040379



ITEM	PART NO.	QTY.	DESCRIPTION
1	6040750	1	Axle Weldment
2	6040751	1	Shaft, Front Axle
3	6040754	1	Bracket, Lift
4	6040549	1	Shaft, Rear Axle
5	6040814	1	Lift Plate
6	2503189	4	Bearing, Flanged Bronze 3/4 ID
7	2504805	8	Retaining Ring, .75 Ext. Heavy Duty
8	6048212	1	Pivot Pin
9	2900059	1	Set Screw, Soc. Hd., #10-32 x 1/4"
10	2900034	1	Cotter Pin, 3/32" x 3/4"
11	2500066	1	Spring, Ext 3/8 X .055 X 5"
12	2503641	5	Wheel 3 X 3 X 3/4" Poly
13	2506324	1	Cable Assembly
14	2504577	3	Shaft Collar, 3/4" Split
15	2900006	2	Lock Washer, 3/8" Split
16	2900010	4	Lock Nut, 1/4-20 Nylon
17	2900125	1	Hex Nut, 1/4-20
18	2900144	2	Cap Screw, Hex Hd., 1/4-20 x 3/4"
19	2900022	2	Flat Washer, 5/16" SAE
20	2900005	2	Cap Screw, Hex Hd., 3/8-16 x 1"
21	2900051	1	Shoulder Screw, 5/16" x 1/2" (1/4-20)
22	2900008	1	Cap Screw, Hex Hd., 1/4-20 x 1"

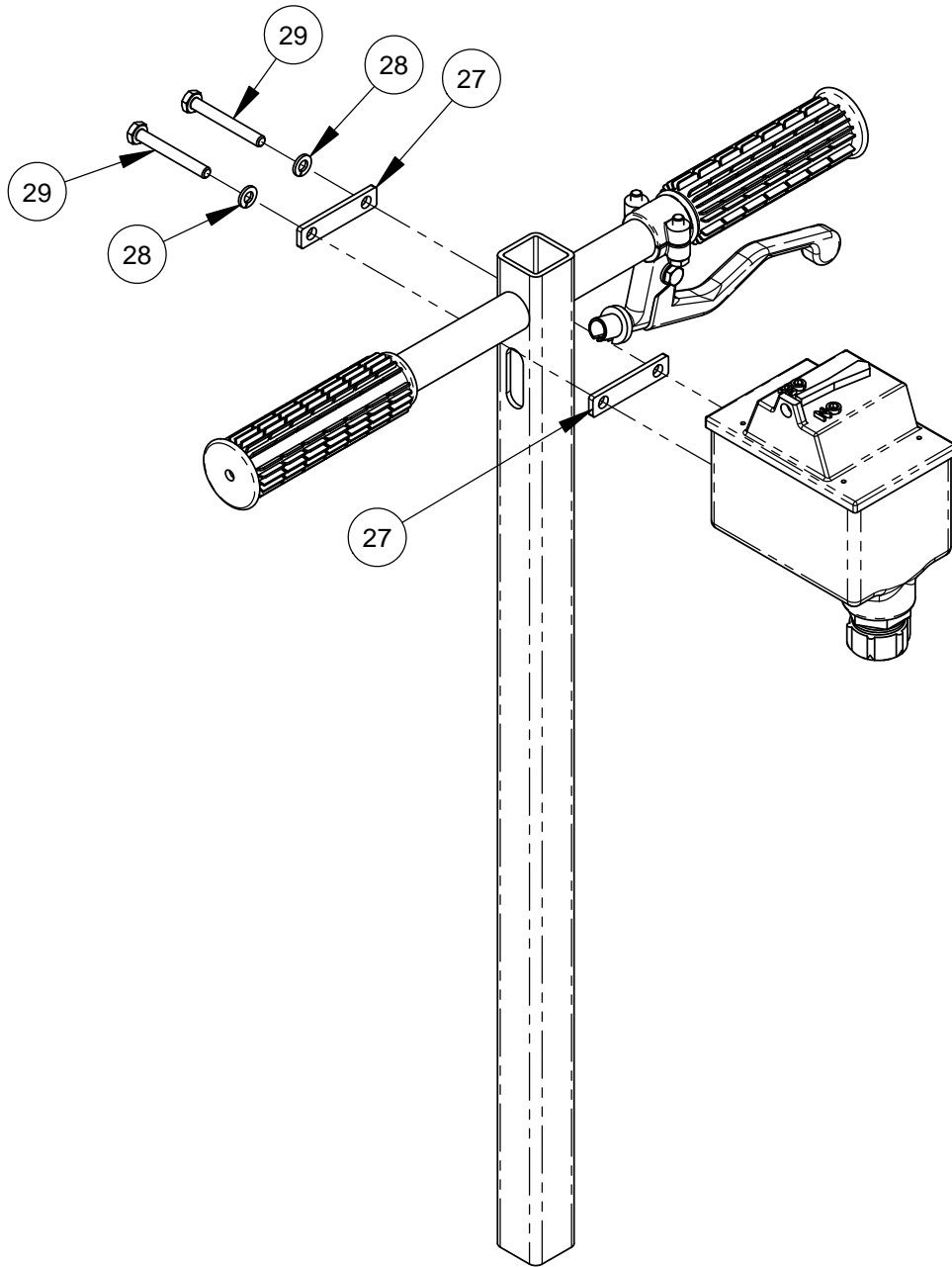
ELECTRIC MOTOR ASSEMBLY -230V #6040819

LOCK VOLTAGE TO 230V



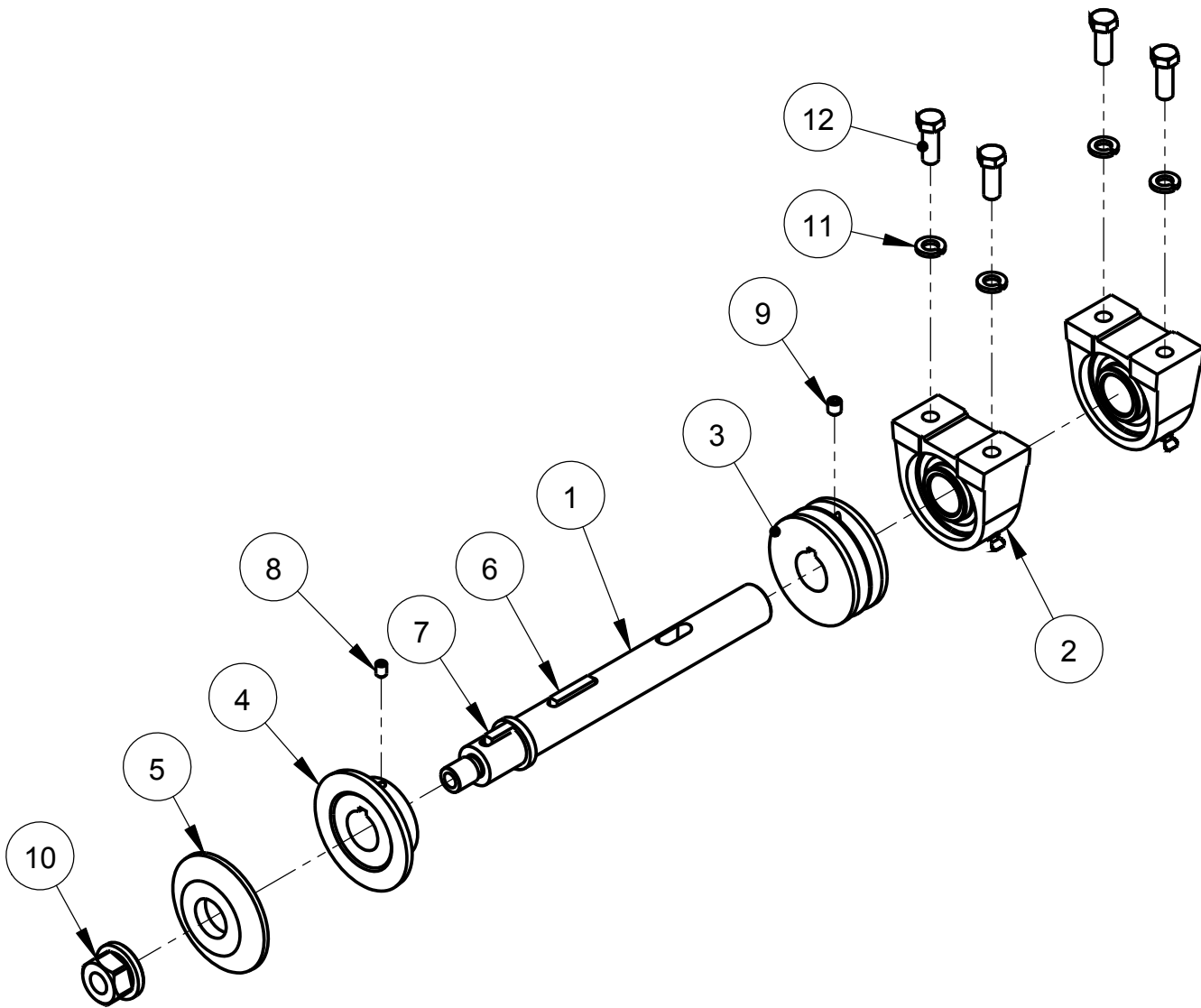
ITEM	PART NO.	Default/QTY.	DESCRIPTION
1	2600733	1	Electric Motor, 2.5 HP, 115/230 Volt
2	6040816	1	Idler Arm
3	6040817	2	Motor Mount
4	6048229	1	Key, 3/16" Sq. x 1-1/4"
5	2500067	1	Spring, 3/8" x 4"
6	2500820	1	V-Belt, 3VX280
7	2501225	1	Taper Bushing, 7/8" with setscrews
8	2501727	1	Bearing, 1/2" ID Flanged Bronze
9	2502276	2	Ball Bearing, 1/2 x 1-3/8 x 7/16 (1621-ZZ)
10	2504972	1	1/4-20 X 1-1/4" Spring Anchor
11	2504694	1	Sheave, 3.35-2 Groove (2-3V-3.35-TB)
12	2900012	1	Shoulder Screw, 1/2" x 1-1/4" (3/8-16)
13	2900022	8	Flat Washer, 5/16" SAE
14	2900031	4	Lock Washer, 5/16" Split
15	2900058	4	Flat Washer, 1/2" SAE
16	2900141	4	Hex Nut, 5/16-18
17	2900508	4	Cap Screw, Hex Hd., 5/16-18 x 1-1/2"
18	2900589	4	Cap Screw, Hex Hd., 5/16-24 x 3/4"
19	2900782	1	Jam Nut, 3/8-16
20	2902004	1	Shoulder Screw, 1/2" x 7/8" (3/8-16)
21	2902126	1	Jam Lock Nut, 1/4-20
22	2903246	1	Jam Lock Nut, 3/8-16
23	2505181	1	Spring Anchor, 3/8-16 x 1-5/8"
24	2907012	1	Cap Screw, Hex Hd., M6-1.0 x 40mm
25	2901494	2	Flat Washer, M6
26	2900302	1	Lock Nut, M6-1.0 Nylon Insert

ELECTRIC MOTOR SWITCH ASSEMBLY-230V #6040819



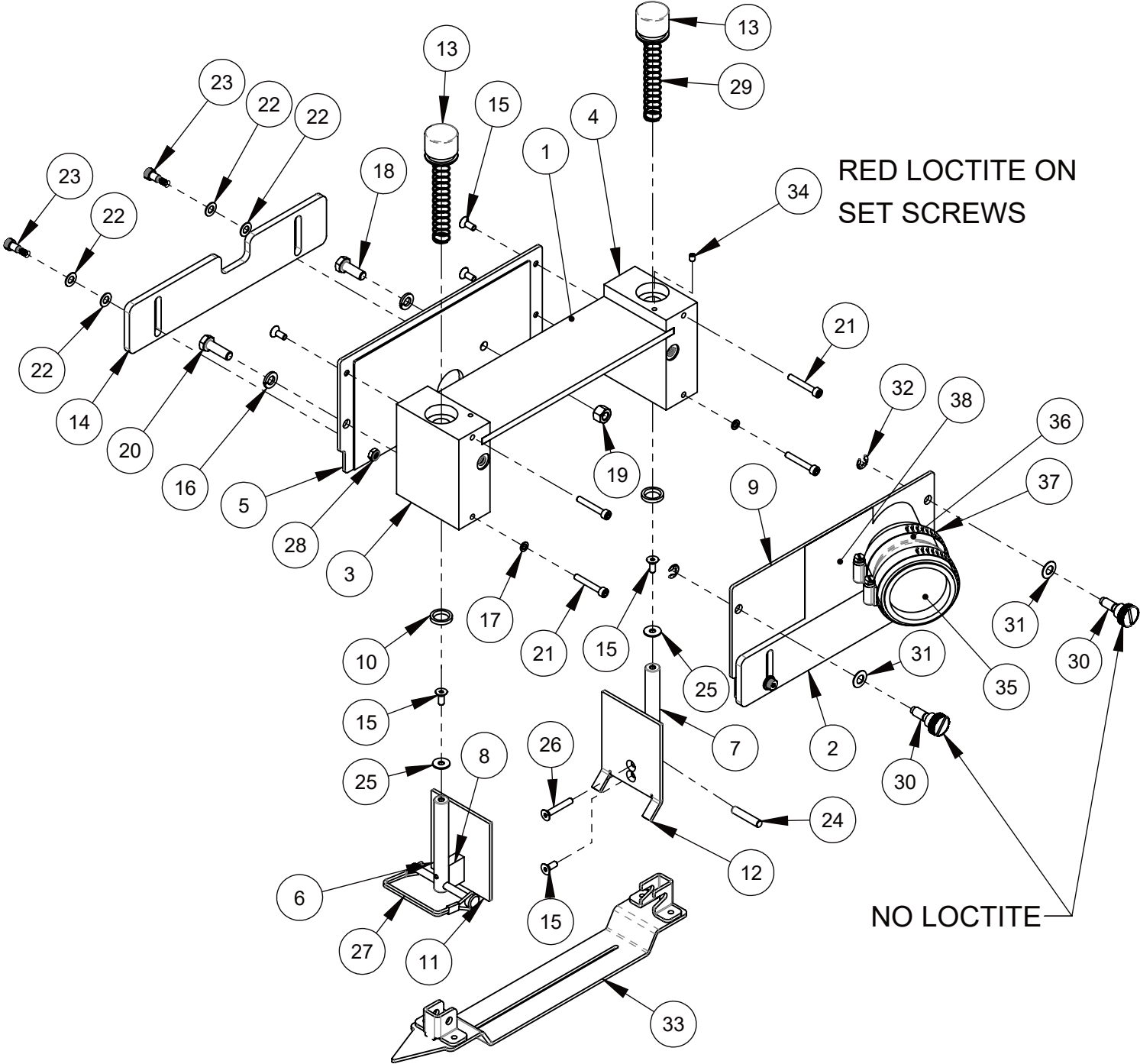
ITEM	PART NO.	QTY.	DESCRIPTION
27	6040820	2	Plate, Switch Mounting
28	2900024	2	Lock Washer, 1/4" Split
29	2900294	2	Cap Screw, Hex Hd., 1/4-20 x 2"

BLADE SHAFT ASSEMBLY: 6040380



ITEM	PART NO.	QTY.	DESCRIPTION
1	6040752	1	Blade Shaft
2	2500732	2	Pillow Block Bearing 1"
3	6041067	1	Pulley, 2-3V-2.75, 1" Bore
4	6041069	1	Flange, Inner Blade 3"
5	6041070	1	Flange, Outer Blade 3"
6	6010169	1	Key, 1/4" Sq. x 1-1/4"
7	6040081	1	Key, 1/4" Sq. x 3/4"
8	2900101	1	Set Screw, Soc. Hd., 1/4-20 x 3/8"
9	2900142	1	Set Screw, Soc. Hd., 5/16-18 x 3/8"
10	2900065	1	Flange Nut, 5/8-11 R.H.
11	2900006	4	Lock Washer, 3/8" Split
12	2900005	4	Cap Screw, Hex Hd., 3/8-16 x 1"

SPRING BOX ASSEMBLY # 6040664

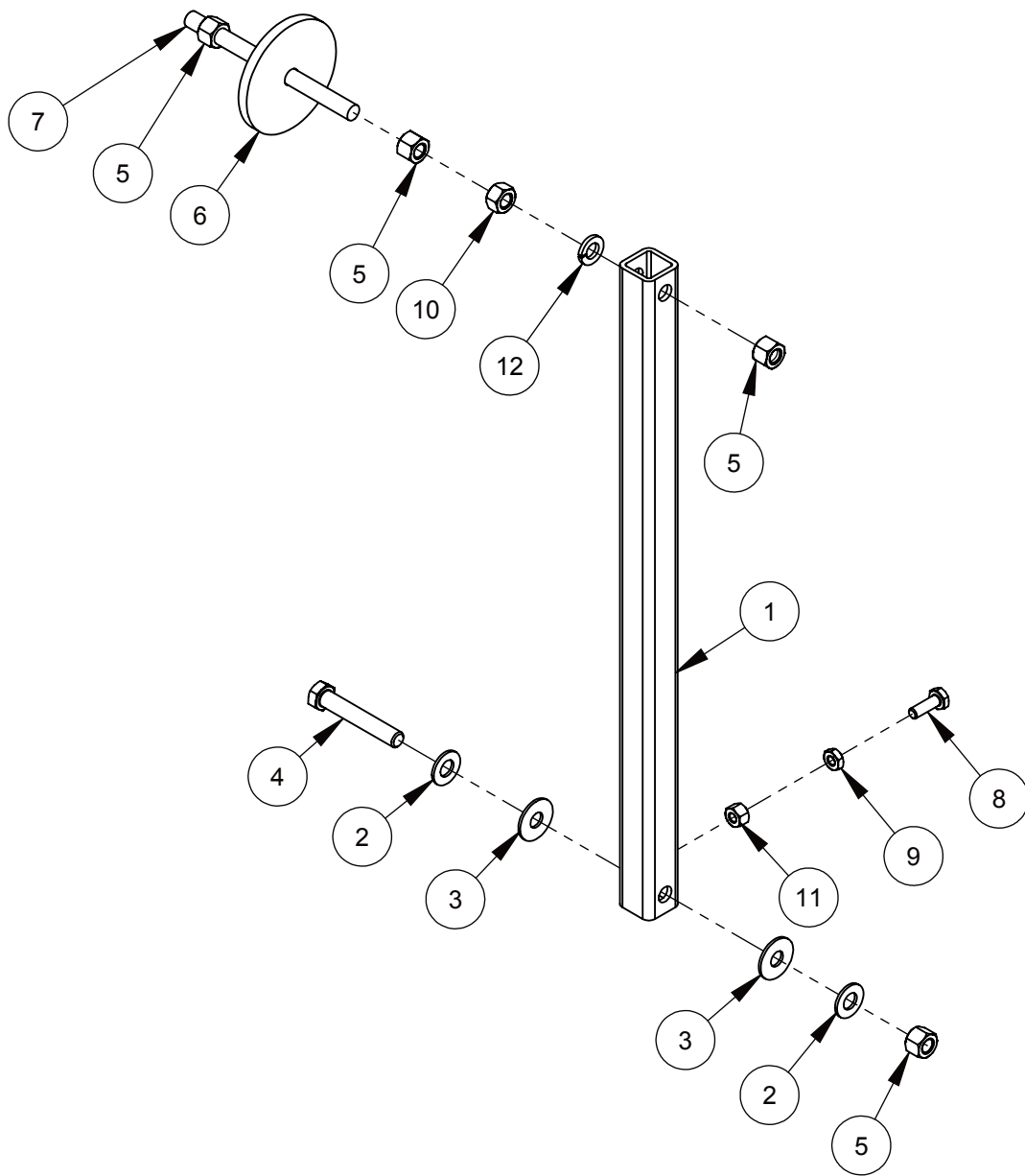


- ASSEMBLY NOTE:**
1. APPLY 2502046 SYNTHETIC GREASE TO OD OF COMPRESSION SPRINGS
 2. APPLY BLUE LOCTITE ON ALL THREADS UNLESS NOTED

SPRING BOX ASSEMBLY # 6040664

ITEM	PART NO.	QTY.	DESCRIPTION
1	6040655	1	Cover, Top Spring Box
2	6040662	1	Cover, Outer Lexan
3	6040654	1	Spring Block, Rear 6"
4	6040653	1	Spring Block, Front 6"
5	6040652	1	Cover, Inner Spring Box
6	6040658	1	Shaft, Spring Block Rear
7	6040657	1	Shaft, Spring Block Front
8	6040659	2	Block, Dust Diverter
9	6040774	1	Vac Attachment Cover Weldment
10	2504593	2	Shaft Seal, 1/2" Shaft
11	6040813	1	Diverter, Rear Dust
12	6040660	1	Diverter, Front Dust
13	6040656	2	Spring Block Cap
14	6040663	1	Cover, Inner Lexan
15	2900456	7	Cap Screw, Flat Hd., #10-32 x 1/2"
16	2900031	2	Lock Washer, 5/16" Split
17	2900038	2	Lock Washer, #10 Split
18	2900668	1	Cap Screw, Hex Hd., 5/16-18 x 7/8"
19	2900039	1	Lock Nut, 5/16-18 Nylon
20	2900138	1	Cap Screw, Hex Hd., 5/16-18 x 1"
21	2901584	4	Cap Screw, Soc. Hd., #10-32 x 1-1/4"
22	2901585	8	Flat Washer, 1/4" Nylon
23	2902008	4	Shoulder Screw, 1/4" x 5/16 (#10-24)
24	2900577	1	Dowel Pin, 1/4" Dia x 1-1/4"
25	2900770	2	Fender Washer, M5
26	2907093	2	Cap Screw, Flat Hd., #10-32 x 1-1/4"
27	2901589	1	Pin, Safety 1/4"
28	2902007	4	Jam Lock Nut, #10-24 Nylon
29	2504643	2	Spring, Comp. .60 x .045 x 3.50 Long
30	6040385	2	Captive Thumb Screw, 5/16-18
31	2901963	2	Washer, Belleville 5/16"
32	2504645	2	Retaining Ring, 5/16 Ext.
33	2505180	1	Skid Plate Weldent - 6/8" Blade - .156 slot
34	2900059	2	Set Screw, Soc. Hd., #10-32 x 1/4"
35	2505177	1	Plug, Tapered Round 2-1/4"
36	2506008	1	Hose Reducer, 2.25"-2" ID
37	3200096	2	Hose Clamp #40
38	1802443	1	DP Symbol Decal
39	2502046	AR	Grease, Fuchs Synthetic

POINTER ASSEMBLY: 6041088



ITEM	PART NO.	QTY.	DESCRIPTION
1	6041085	1	Pointer
2	2900014	2	Flat Washer, 3/8" SAE
3	2900153	2	Friction Washer, 3/8"
4	2900079	1	Cap Screw, Hex Hd., 3/8-16 x 2-1/4"
5	2900018	4	Lock Nut, 3/8-16 Nylon
6	6041086	1	Guide Wheel
7	6041087	1	3/8-16 X 5.00" Threaded Rod
8	2900144	1	Cap Screw, Hex Hd., 1/4-20 x 3/4"
9	2900358	1	Jam Nut, 1/4-20
10	2900033	1	Hex Nut, 3/8-16
11	2900010	1	Lock Nut, 1/4-20 Nylon
12	2900006	1	Lock Washer, 3/8" Split

(Intentionally Blank)

EQUIPMENT AND PARTS WARRANTY

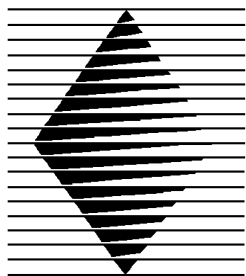
Diamond Products warrants all equipment manufactured by it against defects in workmanship or materials for a period of one (1) year from the date of shipment to Customer.

The responsibility of Diamond Products under this Warranty is limited to replacement or repair of defective parts at Diamond Products' Elyria, Ohio factory, or at a point designated by it, of such parts as shall appear to us upon inspection at such parts, to have been defective in material or workmanship, with expense for transportation and labor borne by Customer.

In no event shall Diamond Products be liable for consequential or incidental damages arising out of the failure of any Product to operate properly.

Integral units such as engines, electric motors, batteries, transmissions, etc., are excluded from this Warranty and are subject to the prime manufacturer's warranty.

THIS WARRANTY IS IN LIEU OF ALL OTHER WARRANTIES, EXPRESSED OR IMPLIED, AND ALL SUCH OTHER WARRANTIES ARE HEREBY DISCLAIMED.



DIAMOND PRODUCTS

333 Prospect Street, Elyria, Ohio 44035
(440) 323-4616 • (800) 321-5336 • Fax (440) 323-8689
www.diamondproducts.com