



CORE PREP
PARTS LIST

CPG80E
SINGLE HEAD LOW PROFILE
FLOOR GRINDER

FEBRUARY 2023

Part #: 1802705-6

(Intentionally Blank)

Table of Contents

<u>Description</u>	<u>Page No.</u>
Motor Assembly.....	4-5
Frame Assembly.....	6
Frame Lift Assembly.....	7
Flex Coupling Assembly.....	8
Dust Guard Assembly.....	9
Handle Assembly.....	10
Decal Group.....	11
Warranty.....	12

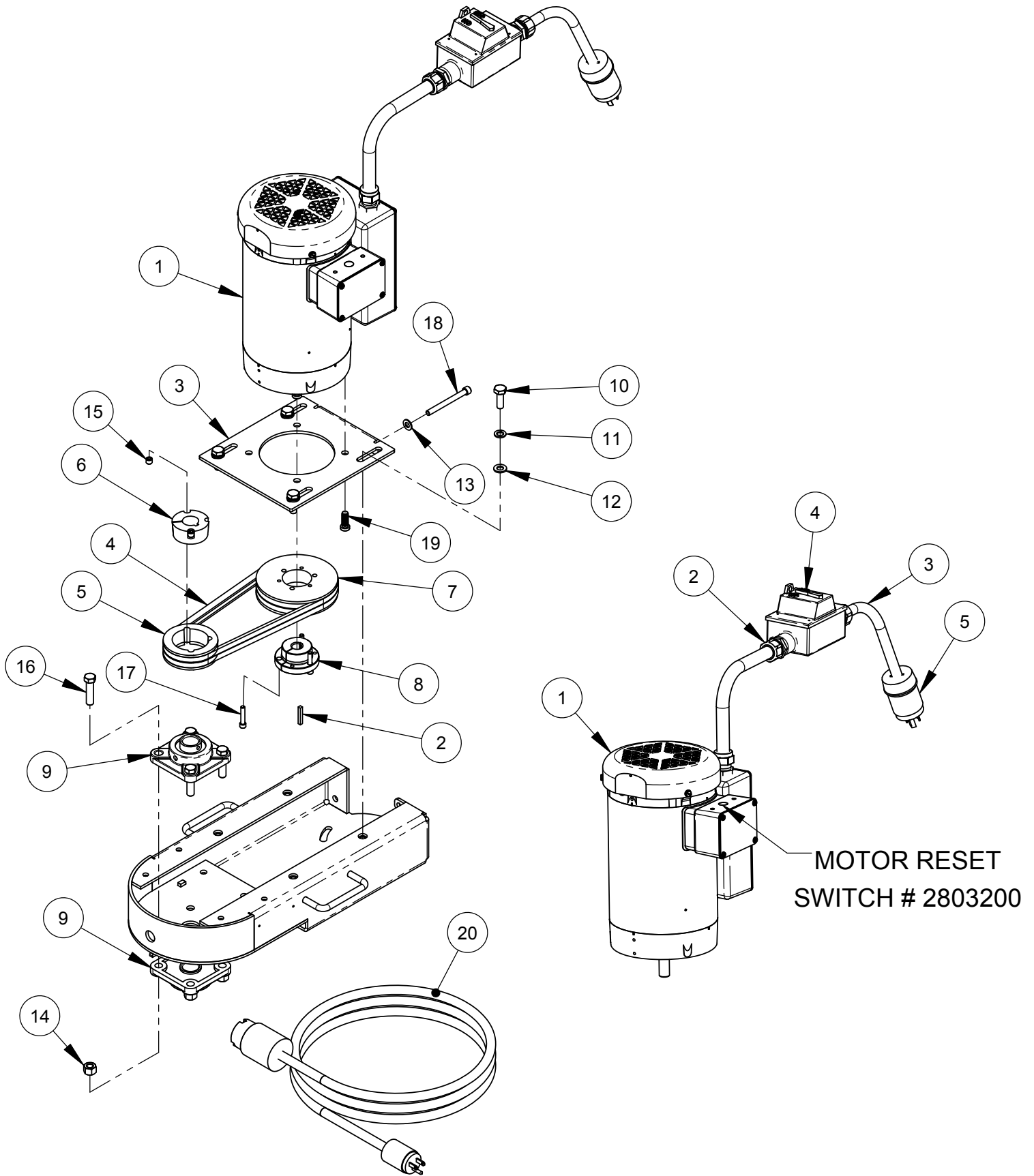
Quick Reference Service Filters/ Belts

<u>DP Part No.</u>	<u>Description</u>	<u>Manufacturer's Part</u>
2500034	V-Belt (2) for Baldor 2HP, 1PH	(Gates #3V315)

Accessories-Floor Grinding Heads

DP Part No.	Size	Description
GHH0809	8"	9 Segment

MOTOR ASSEMBLY: 6040823

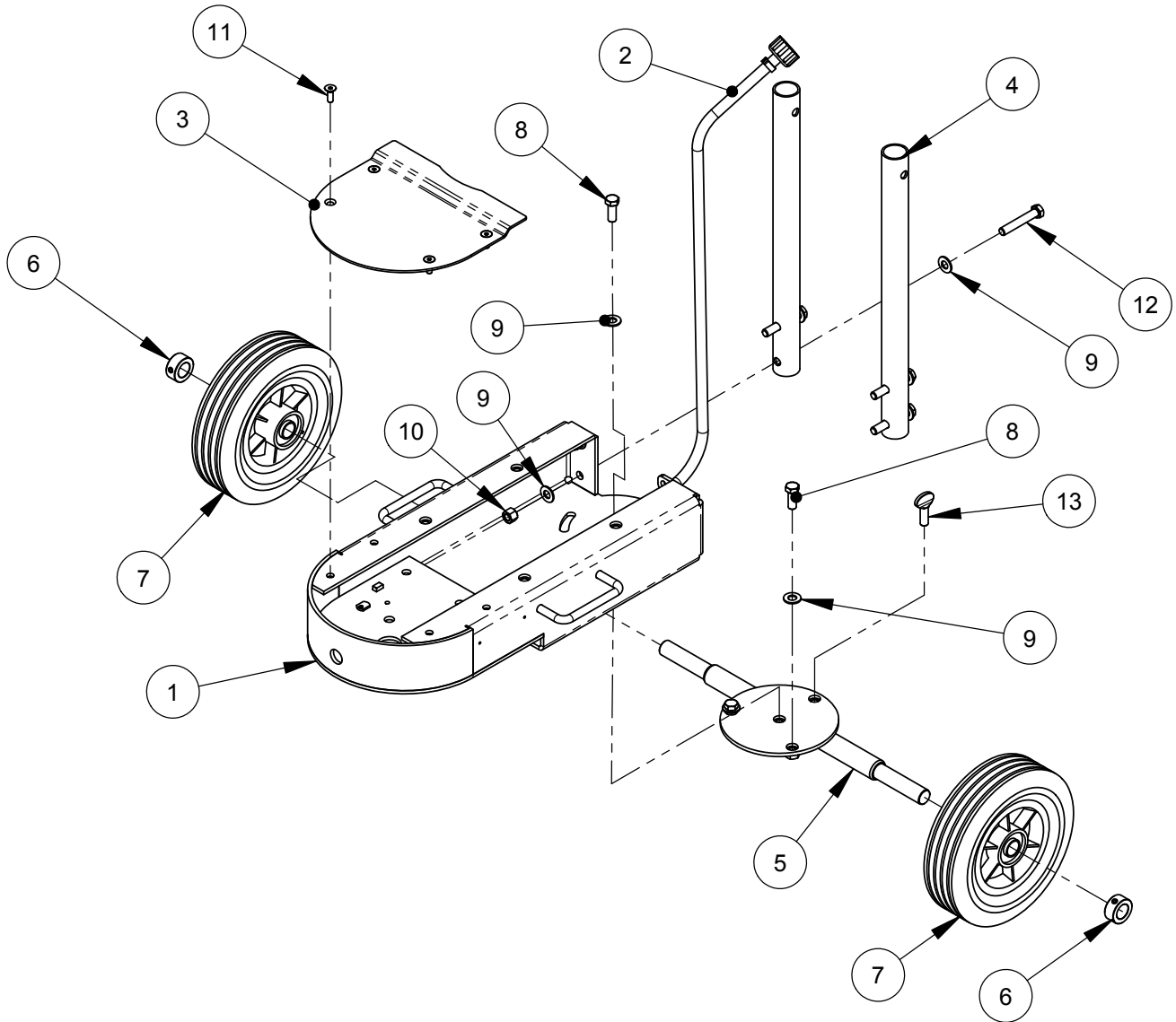


MOTOR ASSEMBLY: 6040823

ITEM	PART NO.	QTY.	DESCRIPTION
1	2600594	1	2HP-1Ph Elec. Motor w/ on/off switch, 20A Plug
2	6048229	1	Key, 3/16" Sq. x 1-1/4"
3	6040532	1	Engine Mounting Plate
4	2500034	2	V-Belt, 3VX315
5	2504694	1	Sheave, 3.35-2 Groove (2-3V-3.35-TB)
6	2500030	1	Taper Bushing, 1" w/ Set Screws
7	2505006	1	Sheave, 5.00-2 Groove (3V500SH)
8	2504699	1	Bushing, 5/8" QD SH
9	2501063	2	Bearing, 4 Bolt Flange, 1" ID
10	2900223	4	Cap Screw, Hex Hd., M10-1.5 x 30mm
11	2900321	4	Lock Washer, M10 Split
12	2901356	4	Flat Washer, M10
13	2900022	1	Flat Washer, 5/16" SAE
14	2900045	4	Lock Nut, 7/16-14 Nylon
15	2900131	2	Set Screw, Soc. Hd., 3/8-16 x 3/8"
16	2900149	4	Cap Screw, Hex Hd., 7/16-14 x 1-3/4"
17	2900519	3	Cap Screw, Soc. Hd., 1/4-20 x 1-1/4
18	2900613	1	Cap Screw, Soc. Hd., 5/16-18 x 3-1/4
19	2900983	4	Cap Screw, Soc. Low Hd., 3/8-16 x 1"
20	4699100	1	Cord 50' 12GA, 115V 20A Twist to 15A Straight

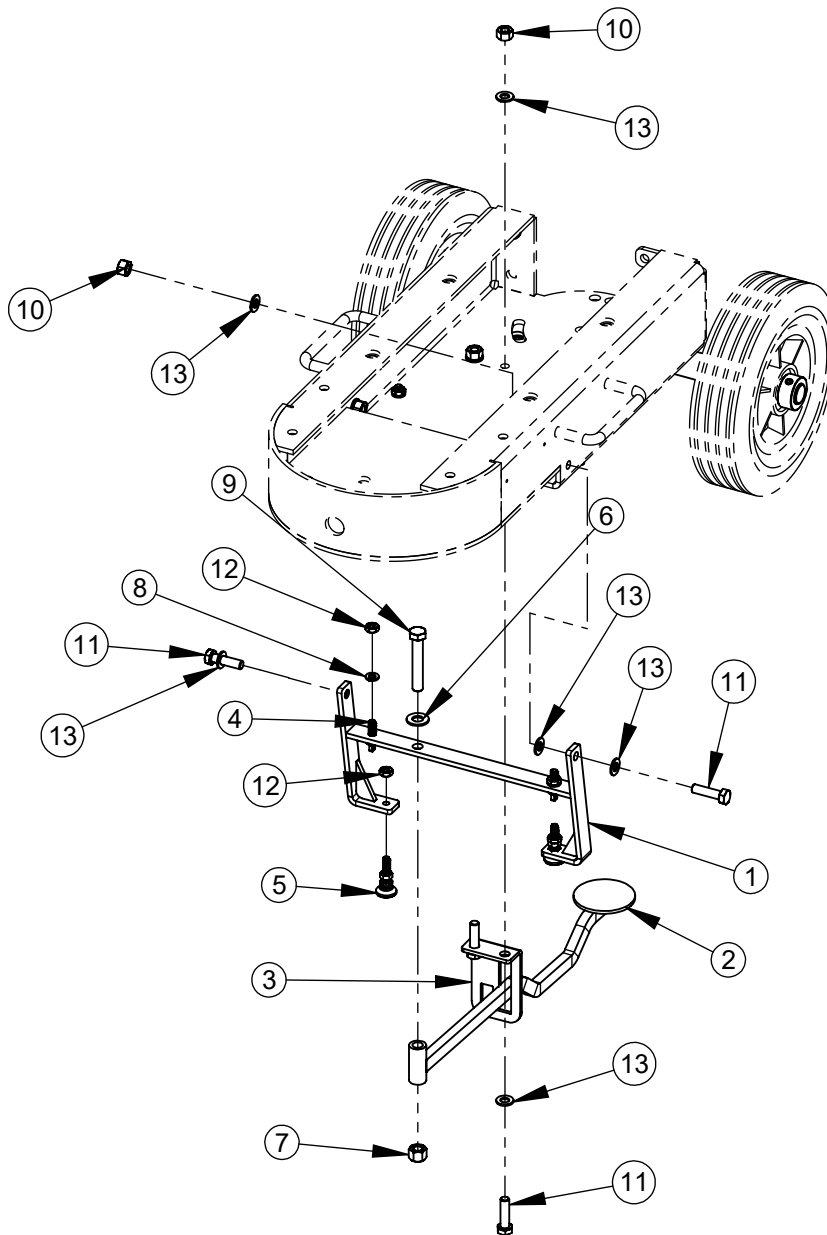
ITEM	PART NO.	QTY.	DESCRIPTION
1	2600271	1	Motor, 2HP-1PH Baldor
2	2800043	2	Connector, 3/4" Cord
3	6040347	1	12/3 Cord W/ 20Amp L5-20P Plug
4	2800309	1	Switch Box Lid W/Gaskets & Screws
5	2800087	1	Plug, Nema L5-20P, 125VAC-20Amp
6	2803200	1	Motor Reset Switch

FRAME ASSEMBLY: 6040821



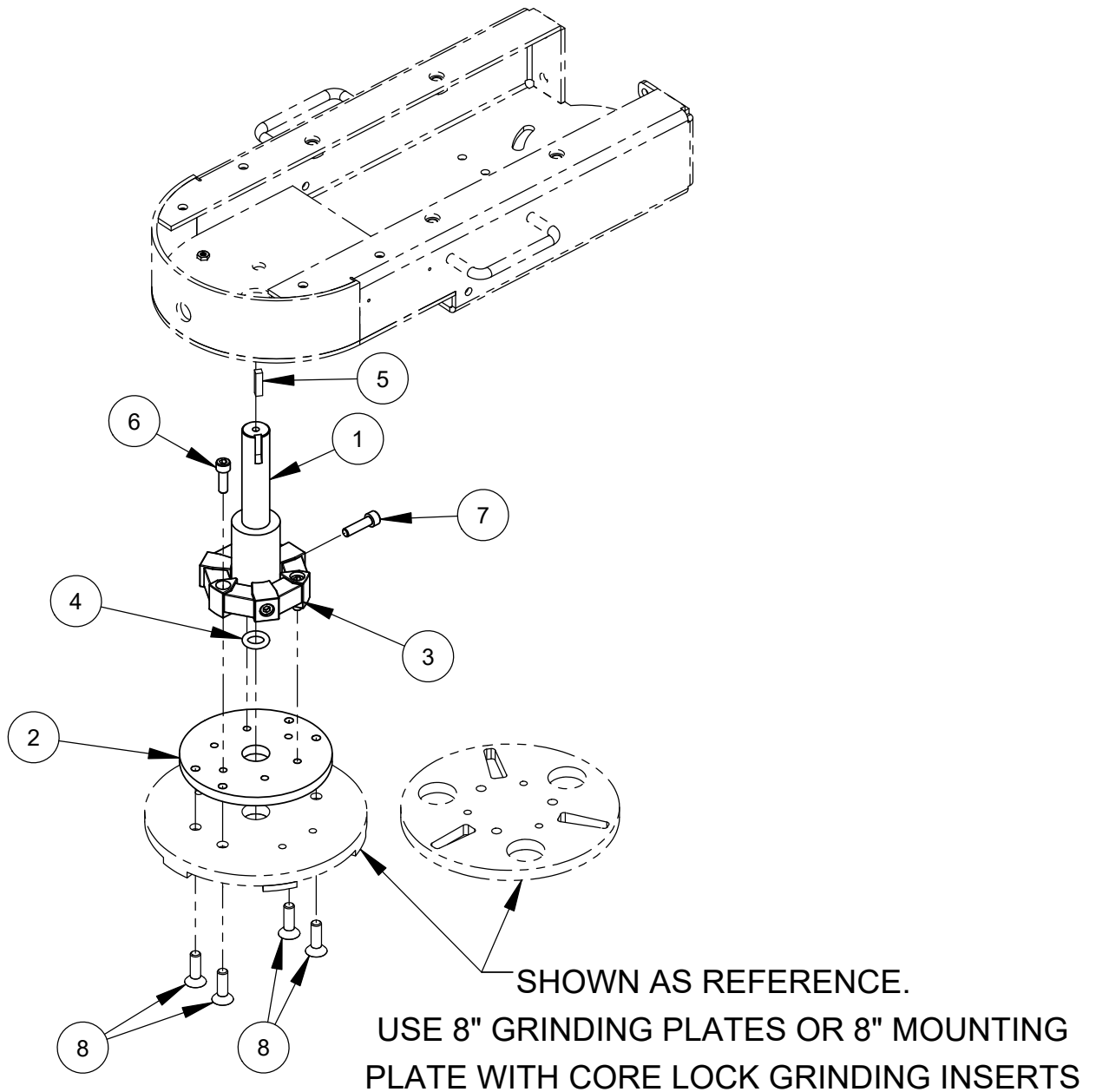
ITEM	PART NO.	QTY.	DESCRIPTION
1	6040828	1	Frame Weldment
2	6040299	1	Water Hose Assembly
3	6040533	1	Pulley Shield
4	6040536	2	Handle Support
5	6040542	1	Rear Axle Weldment
6	2400615	2	Set Collar, 3/4"
7	2501439	2	Wheel, 8 x 2 x 3/4"
8	2900005	3	Cap Screw, Hex Hd., 3/8-16 x 1"
9	2900014	11	Flat Washer, 3/8" SAE
10	2900018	4	Locknut, 3/8-16, Nylon
11	2900020	4	Cap Screw, Flat Hd., 1/4-20 x 3/4"
12	2900079	4	Cap Screw, Hex Hd., 3/8-16 x 2-1/4"
13	2900500	1	Thumb Screw, 3/8-16 x 1"

FRAME LIFT ASSEMBLY #6030459



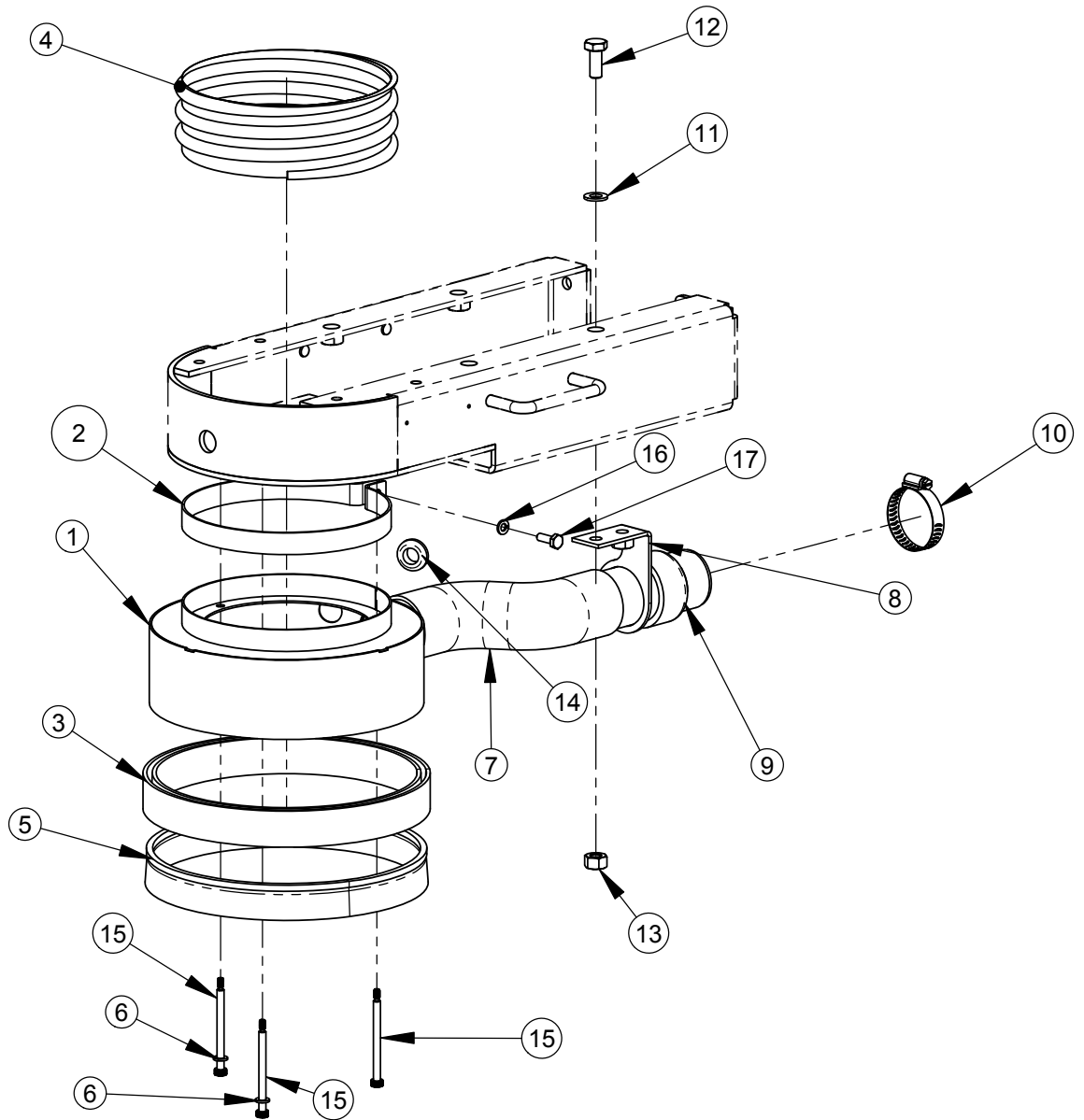
ITEM	PART NO.	QTY.	DESCRIPTION
1	6041380	1	Kick Stand Weldment
2	6041381	1	Foot Pedal Weldment
3	6041382	1	Kick Stand Bracket
4	2504972	4	1/4-20 X 1-1/4" Spring Anchor
5	2505376	2	1/4" Leveling Mount
6	2900014	1	Flat Washer, 3/8" SAE
7	2900018	1	Locknut, 3/8-16, Nylon
8	2900024	4	Lock Washer, 1/4" Split
9	2900079	1	Cap Screw, Hex Hd., 3/8-16 x 2-1/4"
10	2900303	4	Lock Nut, M8-1.25 Nylon Insert
11	2900313	4	Cap Screw, Hex Hd., M8-1.25 x 30mm
12	2900358	10	Jam Nut, 1/4-20
13	2901336	10	Flat Washer, M8

FLEX COUPLING ASSEMBLY #6040822



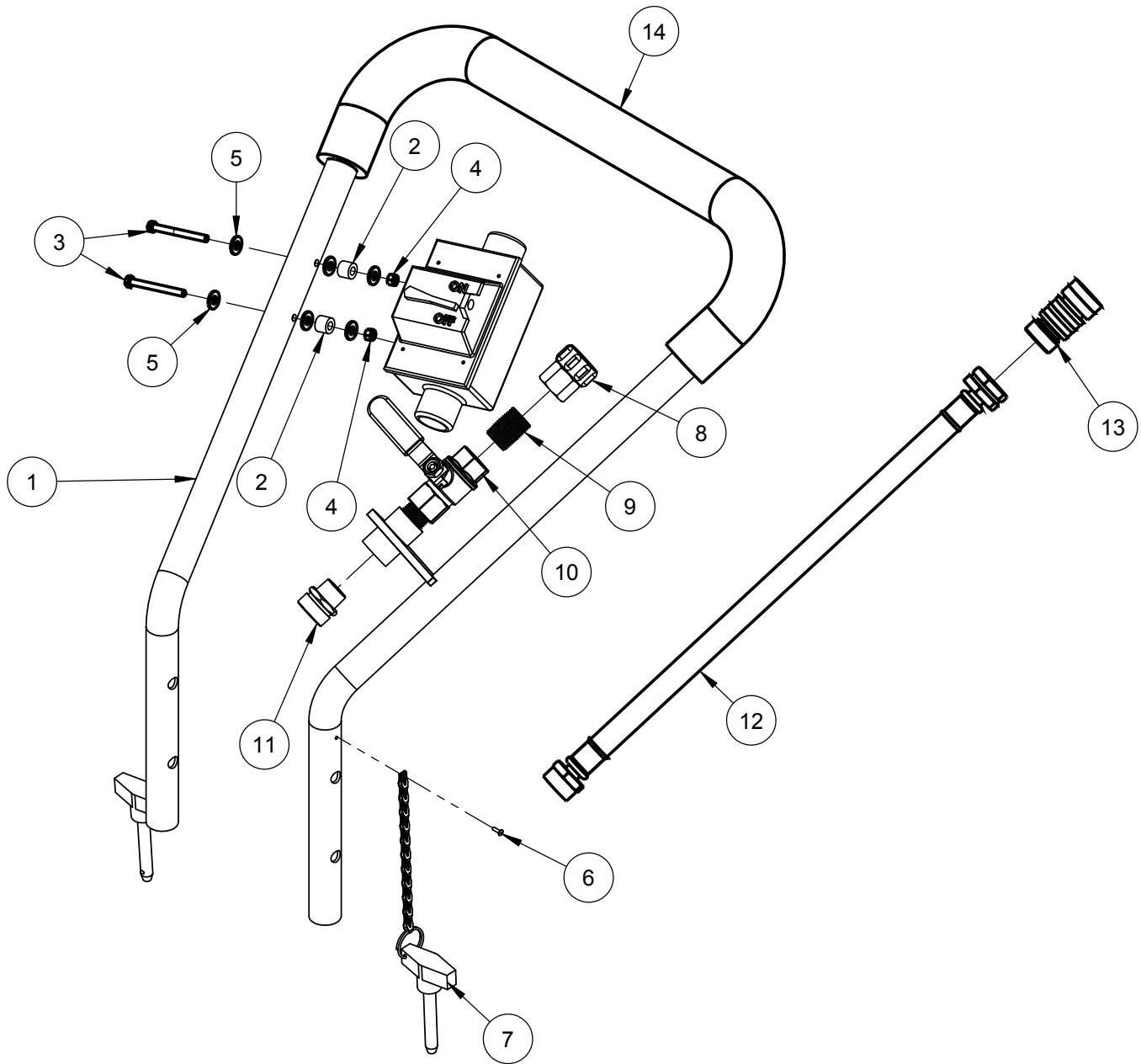
ITEM	PART NO.	QTY.	DESCRIPTION
1	6041373	1	Shaft, Grinding Head
2	6040832	1	Disk Mounting Flange
3	2503196	1	Flex Coupling
4	2503195	1	O-Ring, Metric M5 x 15mm
5	6011089	1	Key, 1/4" Sq. x 1" Long
6	2900161	3	Cap Screw, Soc. Hd., M8-1.25 x 25mm
7	2900911	3	Cap Screw, Soc. Hd.. M8-1.25 x 30mm
8	2900230	4	Cap Screw, Flat Hd., 3/8-16 x 1-1/4"

DUST GUARD ASSEMBLY #6041371



ITEM	PART NO.	QTY.	DESCRIPTION
1	6040829	1	Dust Guard
2	6040911	1	Hose Ring 7"
3	6040904	1	Strip Brush Holder
4	6041193	1	Flexible Hose, 7" ID x 2.5" Long
5	6040905	2	Strip Brush
6	2901494	3	Flat Washer, M6
7	6040339	1	Hose, 2" ID, 8.5" Long
8	6040537	1	Dust Port Bracket
9	2503177	1	Hose Reducer, 2.0"-1.5" ID
10	3200095	1	Hose Clamp #32
11	2901356	2	Flat Washer, M10
12	2900333	2	Cap Screw, Hex Hd., M10-1.5 x 25mm
13	2900304	2	Lock Nut, M10-1.5 Nylon Insert
14	2505182	1	Grommet, 9/16" ID
15	2902198	3	M6 x 70MM Shoulder Bolt (M5-0.8mm)
16	2900024	1	Lock Washer, 1/4" Split
17	2900144	1	Cap Screw, Hex Hd., 1/4-20 x 3/4"

HANDLE ASSEMBLY: 6040343



ITEM	PART NO.	QTY.	DESCRIPTION
1	6040538	1	Handle Weldment
2	6041062	2	Throttle Spacer
3	2900597	2	Cap Screw, Hex Hd., M5 x 50mm
4	2900301	2	Lock Nut, M5 Nylon
5	2900016	6	Flat Washer, #10 USS
6	2900053	2	Rivet, 3/32" Dia.
7	2900257	2	Lock Pin, T Handle, 3/8"
8	3200022	1	Fitting, 1/2" F. Pipe to 3/4" F. Garden
9	3200008	2	Close Nipple, 1/2" NPT
10	3200027	1	Water Valve
11	3200155	1	Fitting, 1/2" M. Pipe to 3/4" M. Garden
12	6048918	1	Hose Assy., 1/2 x 18-1/2", Water
13	3201876	1	3/4" M. Garden to 3/4" F. Garden (QD type)
14	6040521	1	Foam grip

DECAL GROUP

CORE PREP DECAL
#1802900 (QTY. 1)



WARNING UNPLUG
POWER DECAL
#1801075 (QTY.1)



WARNING DECAL
#1800001 (QTY. 1)



GREASE OFTEN DECAL
#1800504 (QTY.1)

EQUIPMENT AND PARTS WARRANTY

Diamond Products warrants all equipment manufactured by it against defects in workmanship or materials for a period of one (1) year from the date of shipment to Customer.

The responsibility of Diamond Products under this Warranty is limited to replacement or repair of defective parts at Diamond Products' Elyria, Ohio factory, or at a point designated by it, of such parts as shall appear to us upon inspection at such parts, to have been defective in material or workmanship, with expense for transportation and labor borne by Customer.

In no event shall Diamond Products be liable for consequential or incidental damages arising out of the failure of any Product to operate properly.

Integral units such as engines, electric motors, batteries, transmissions, etc., are excluded from this Warranty and are subject to the prime manufacturer's warranty.

THIS WARRANTY IS IN LIEU OF ALL OTHER WARRANTIES, EXPRESSED OR IMPLIED, AND ALL SUCH OTHER WARRANTIES ARE HEREBY DISCLAIMED.



333 Prospect Street, Elyria, Ohio 44035
(440) 323-4616 • (800) 321-5336 • Fax (800) 634-4035
www.diamondproducts.com