



**CORE CUT
PARTS LIST**

**CSE12
ELECTRIC CHAINSAW**

Introduction

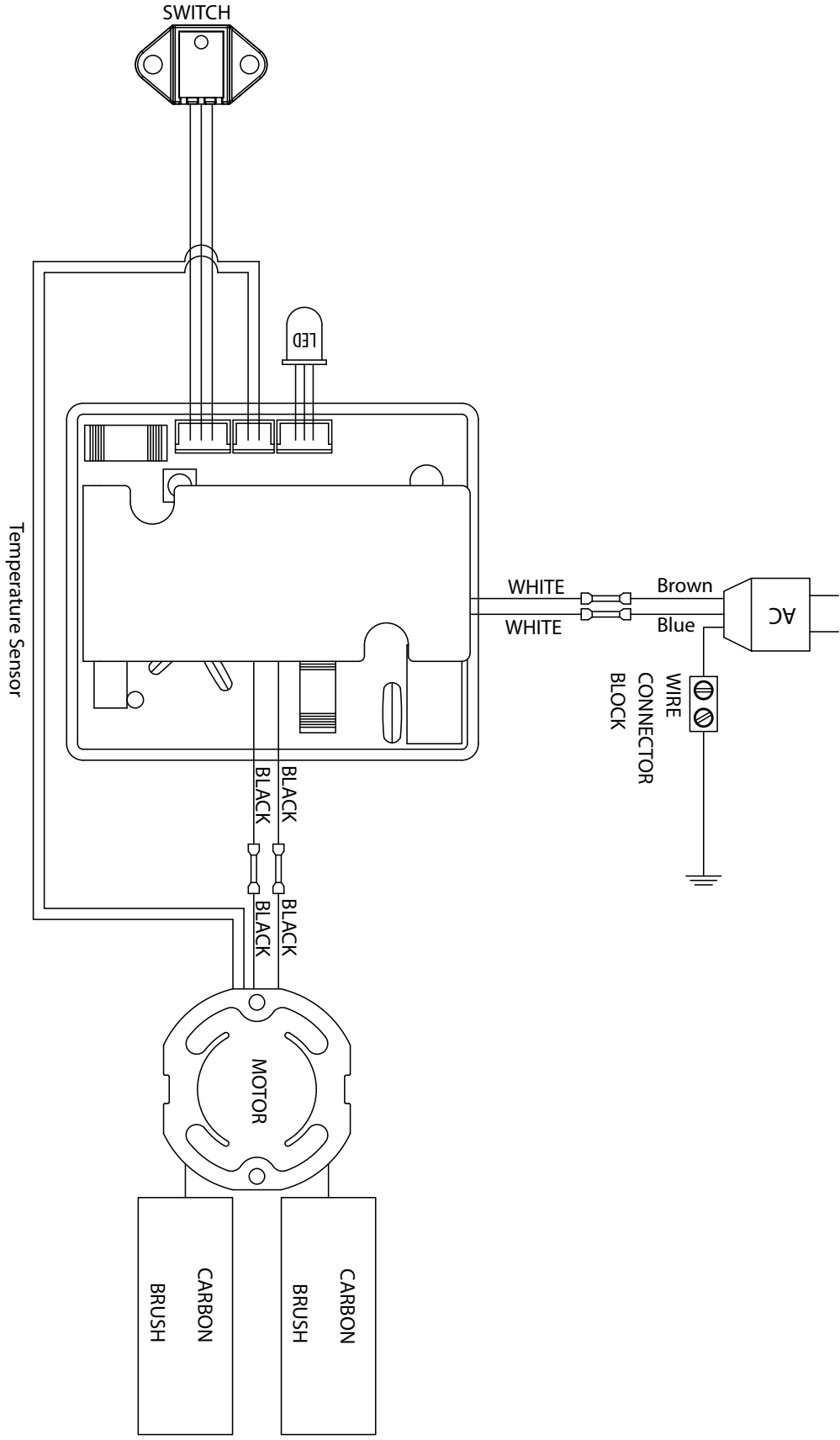
Welcome to the Diamond Products family and thank you for choosing Diamond Products equipment. At Diamond Products we are driven to ensure you are completely satisfied with your product and continually strive to improve our product line so that we can offer you the best possible equipment in the industry.

This operator's manual is a critical document that provides pertinent information regarding the safety, operation, maintenance, and care of your new equipment. Keep this manual available at all times. Operate the equipment and all of its components according to this manual. Failure to comply with and understand the following safety, operation and maintenance instructions can result in serious injuries and/or death. All operators must be properly trained or supervised by experienced personnel prior to using this equipment and should understand the risks and hazards involved. Diamond Products discourages improper or unintended equipment usage and cannot be held liable for any resulting damages.

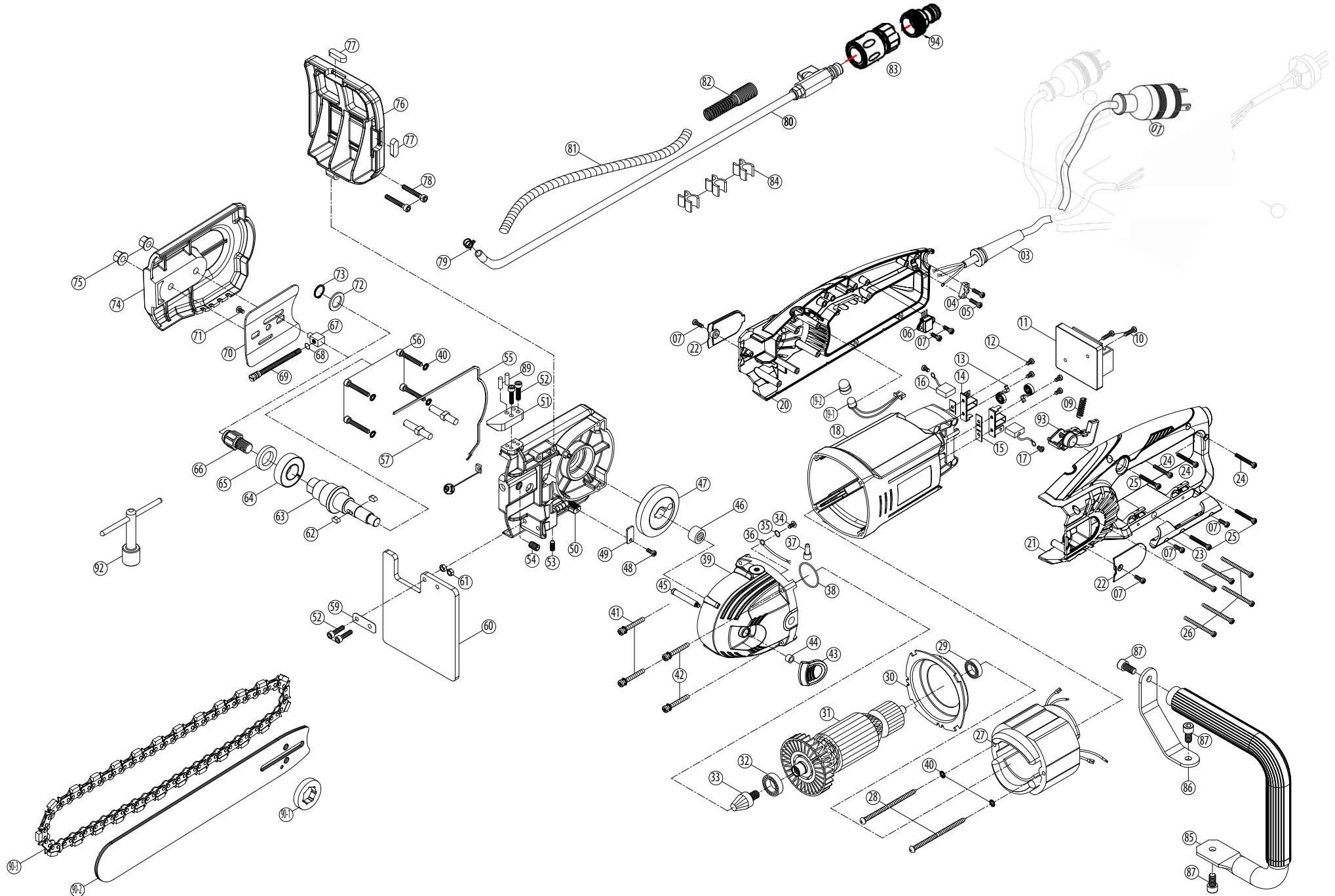
Equipment modifications should be made by Diamond Products to ensure safety and design. Any modifications made by the owner(s) are not the responsibility of Diamond Products and void all equipment warranties if a problem arises as a result of the modification.

Refer to the Diamond Products Parts List for additional information and part diagrams. Refer to the engine/motor manual and manufacturer as the primary source for all safety, operations, and maintenance instructions regarding the engine/motor. Prior to operating, record the equipment's serial number, and the engine's/motor's model and serial numbers in Appendix A

WIRING



MODULO: CSE12



CSE12 PARTS LIST

ITEM	DP #	QTY	DESCRIPTION
1	6078724	1	POWER SUPPLY CABLE (UL-12AWGx3Cx3M-SJTW)
	6078796	1	POWER SUPPLY CABLE (230v) (14AWG (16A) x3Cx3M-SJTW)
3	6078600	1	CORD ARMOR (Ø15.5)
	6078619	1	CORD ARMOR (Ø10.3)
4	2709136	1	CABLE CLIP
5	6078728	2	PANHEAD TAPPING SCREW-B (M4x14)
6	6078729	1	SWITCH (HALL EFFECT)
7	6078730	6	PANHEAD TAPPING SCREW-B (M4x12)
9	6078731	1	SPRING (Ø0.8 x Ø6.4 x Ø8 x 9T x 26L)
10	6078732	2	PANHEAD TAPPING SCREW-B (M4x16)
11	6078733	1	ELECTRONICS UNIT (110V)
11	6078734	1	ELECTRONICS UNIT (220V)
12	6078735	4	PANHEAD TAPPING SCREW-B (M4x16)
13	2709123	2	BRUSH SPRING (0.4x4x3T)
14	6078412	2	CARBON BRUSH HOLDER (7x17)
15	2709125	2	INSULATION PLATE (10x38x1)
16	6078414	2	CARBON BRUSH (7x17x19)
16	6078621	2	CARBON BRUSH (7x17x19) (220V)
17	6078736	2	PANHEAD MACHINE SCREW (M4x6xP0.7)
18	6078416	1	MOTOR HOUSING (GRAY-RAL7016)
19	6078738	1	LED INDICATOR LIGHT
20	6078739	1	HANDLE HALF-RIGHT (BLACK)
21	6078740	1	HANDLE HALF-LEFT (BLACK)
22	6078420	2	CARBON CAP (BLACK)
23	6078741	1	HOSE RETAINER
24	6078742	3	PANHEAD TAPPING SCREW-A (M4x20)
25	6078743	3	PANHEAD TAPPING SCREW-B (M4x25)
26	6078744	6	PANHEAD TAPPING SCREW-A (M4x50)
27	6078603	1	STATOR (110V-100x54.1x75)
	6078622	1	STATOR (220V-100x54.1x75)
28	6078745	2	PANHEAD TAPPING SCREW-A (M5x90)
29	6078427	1	BALL BEARING (6200)
30	6078605	1	FAN SHROUD (BLACK)
31	6078606	1	ARMATURE (110V-100x54.1x75)
	6078623	1	ARMATURE (220V-100x54.1x75)
32	6078746	1	BALL BEARING (6202)
33	6078747	1	BEVEL PINION GEAR (M2.0 x 14T)
34	6078748	1	TRUSS HEAD MACHINE SCREW (M4x6xP0.7)
35	6078432	1	EXTERNAL STAR WASHER (M4)

CSE12 PARTS LIST

ITEM	DP #	QTY	DESCRIPTION
36	6078749	1	WIRE LEAD (1007-20#35CM)
37	6078434	1	CRIMP CAP CONNECTOR (C4)
	6078607	1	CRIMP CAP CONNECTOR (C5)
38	6078497	1	O-RING (Ø35x1.5)
39	6078750	1	GEAR HOUSING (MATTE SILVER)
40	6078436	6	SPRING WASHER (M5)
41	6078751	2	PANHEAD TAPPING SCREW-B-W/WASHER (M5x45)
42	6078608	2	PANHEAD TAPPING SCREW-B-W/WASHER (M5x50)
43	6078438	1	SPINDLE LOCK BUTTON (BLACK)
44	6078752	1	HEAD LOCKING KNOB (Ø7xØ12x5.6)
45	6078753	1	ARBOR LOCK
46	6078441	1	NEEDLE BEARING (TA1212)
47	6078754	1	BEVEL GEAR (M2.0x32T)
48	6078613	1	SOCKET CAP SCREW (M4x12xP0.7)
49	6078755	1	CLAMP PLATE
50	6078756	1	GEAR PLATE
51	6078757	1	BUMPER SPIKE
52	6078758	4	SOCKET CAP SCREW (M5x20xP0.8)
53	6078759	1	SOCKET SET SCREW (M6x8xP1.0)
54	6078760	1	SOCKET SET SCREW (M5x8xP0.8)
55	6078761	1	MOLDED GASKET (Ø2.5 x 30cm)
56	6078762	4	SOCKET CAP SCREW (M5x35xP0.8)
57	6078763	2	FIXING STUD
59	6078764	1	RETAINING PLATE
60	6078765	1	SPLASH FLAP
61	6078766	2	NYLOCK NUT (M5xP0.8)
62	6078445	2	PARALLEL KEY (5x5x10)
63	6078767	1	SPINDLE
64	6078768	1	BALL BEARING (6004)
65	6078639	1	OIL SEAL (Ø20xØ32x5)
66	6078769	1	SPROCKET ARBOR
67	6078770	1	ADJUSTOR BLOCK
68	6078771	1	O-RING (Ø5x1)
69	6078772	1	TENSION ADJUSTOR SCREW
70	6078773	1	ADJUSTOR PLATE
71	6078774	1	FLAT HEAD MACHINE SCREW (M4x10xP0.7)
72	6078775	1	FLAT WASHER (Ø16xØ30x2)
73	6078776	1	EXTERNAL CIRCLIP (S-16)

CSE12 PARTS LIST

ITEM	DP #	QTY	DESCRIPTION
74	6078777	1	SIDE COVER
75	6078778	2	FLANGE NUT (M8xP1.25)
76	6078779	1	HAND GUARD
77	6078780	2	TUBULAR SPIRIT LEVEL
78	6078451	2	SOCKET CAP SCREW (M5x25xP0.8)
79	6078487	1	WIRE HOSE CLAMP
80	6078781	1	WATER FEED CONNECTOR KIT
81	6078782	1	CABLE PROTECTOR (5/16"x110CM)
82	6078783	1	SPRING
83	6078471	1	WATER COUPLING
84	6078483	3	HOSE JOINER (BLACK-Ø9xØ12)
	6078717	3	HOSE JOINER (BLACK-Ø12xØ12)
85	6078785	1	SIDE HANDLE
86	6078786	1	HANDLE BRACKET
87	6078787	3	SOCKET CAP SCREW (M8x16xP1.25)
89	6078788	2	PIN (Ø4x15.8)
90-1	6049160	1	SPROCKET
90-2	6049161	1	GUIDE BAR
90-3	DCCC5013 PG	1	DIAMOND CHAIN
91	6078792	1	THRUST PLATE
92	6078793	3	T-WRENCH
93	6078794	1	SWITCH ACTUATOR LOCK-OFF

EQUIPMENT AND PARTS WARRANTY

Diamond Products warrants all equipment manufactured by it against defects in workmanship or materials for a period of one (1) year from the date of shipment to Customer.

The responsibility of Diamond Products under this Warranty is limited to replacement or repair of defective parts at Diamond Products' Elyria, Ohio factory, or at a point designated by it, of such parts as shall appear to us upon inspection at such parts, to have been defective in material or workmanship, with expense for transportation and labor borne by Customer.

In no event shall Diamond Products be liable for consequential or incidental damages arising out of the failure of any Product to operate properly.

Integral units such as engines, electric motors, batteries, transmissions, etc., are excluded from this Warranty and are subject to the prime manufacturer's warranty.

THIS WARRANTY IS IN LIEU OF ALL OTHER WARRANTIES, EXPRESSED OR IMPLIED, AND ALL SUCH OTHER WARRANTIES ARE HEREBY DISCLAIMED.



333 Prospect Street, Elyria, Ohio 44035
(440) 323-4616 • (800) 321-5336 • Fax (800) 634-4035
www.diamondproducts.com