



**CORE VAC
PARTS LIST**

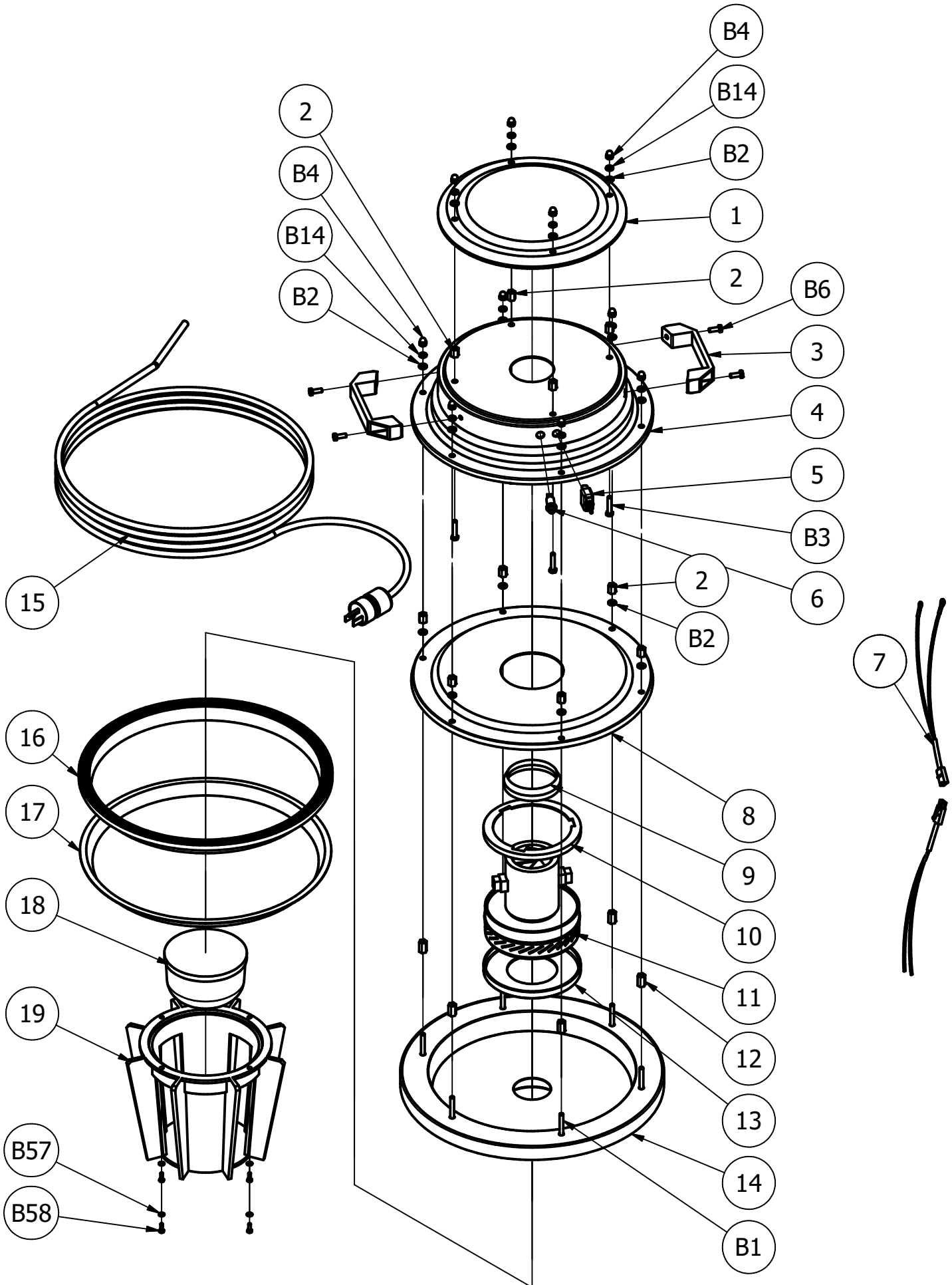
**CV150S
SLURRY VAC**

FEBRUARY, 2024

Table of Contents

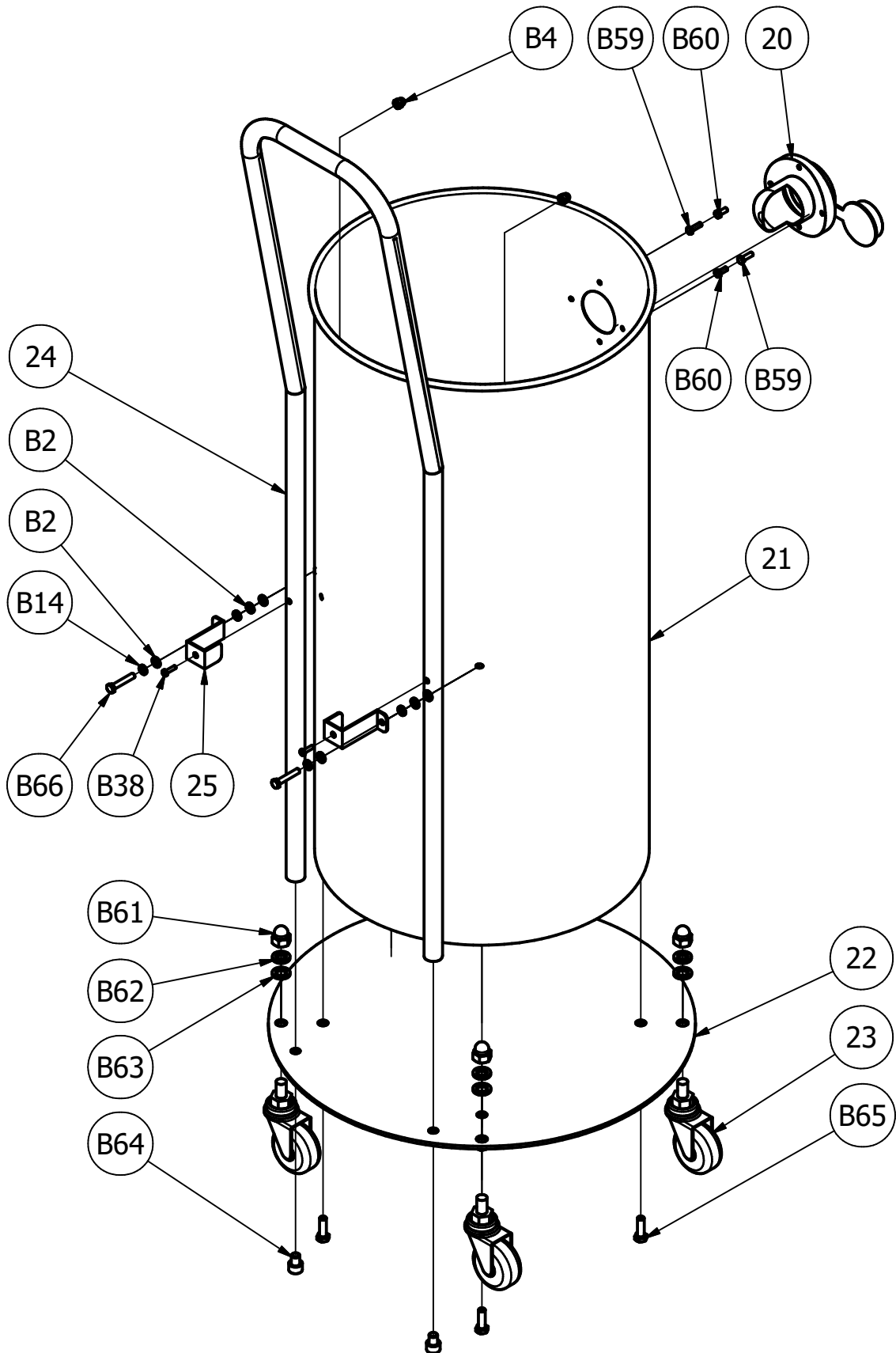
<u>Description</u>	<u>Page No.</u>
1. Head.....	4-5
2. Drum.....	6-7
3. Additional Parts.....	8
4. Notes.....	9-10
5. Warranty.....	12

CV150S HEAD



ITEM	QTY	DESCRIPTION	PART#
1	1	TOP HEAD COVER	2508649
2	10	LONG NUT M6 x14mm	2509415
3	2	HEAD HANDLE	2508586
4	1	MID COVER 1	2509416
5	1	ON/OFF SWITCH	2508585
6	1	LED LAMP	2508610
7	1	MOTOR&ON/OFF SWITCH CABLE CONNECTOR	2508596
8	1	MID COVER 2	2509417
9	1	TOP OF MOTOR COVER	2508595
10	1	MID OF MOTOR COVER	2508597
11	1	MAIN MOTOR	2508581
12	6	LONG NUT M6 x19mm	2509418
13	1	LOW OF MOTOR COVER	2508598
14	1	END HEAD FRAME	2509419
15	1	POWER CORD	2509132
16	1	RUBBER PACKING	2508662
17	1	GASKET	2508663
18	1	AIR BLADDER	2509420
19	1	AIR BLADDER DRUM	2509421
B1	6	M6 x 50 BOLT	2509152
B2	16	M6 WASHER	2508889
B3	4	M6 x 30 BOLT	2509150
B4	10	M6 ACORN NUT	2509145
B6	4	M5 x 16 SEMS BOLT SET	2508895
B14	10	M6 SPRING WASHER	2509147
B57	4	M4 STAINLESS WASHER	2509422
B58	4	M4 x 12 STAINLESS BOLT	2509423

CV150S MAIN DRUM



ITEM	QTY	DESCRIPTION	PART#
20	1	HOSE INLET PARTS	2509163
21	1	MAIN DRUM	2509410
22	1	MAIN DRUM BASE	2509411
23	4	TURN WHEEL 4"	2509412
24	1	FRAME HANDLE	2509413
25	2	FIXING COMPONET FOR FRAME HANDLE	2509414
B2	6	M6 WASHER	2508889
B4	2	M6 ACORN NUT	2509145
B14	4	M6 SPRING WASHER	2509147
B38	2	M4 x 16 SCREW	2509424
B59	2	M5 x 16 SCREW	2509425
B60	2	M5 x 13 SCREW	2509426
B61	4	1/2" ACORN NUT	2509137
B62	4	M12 SPRING WASHER	2509427
B63	4	M12 WASHER	2509138
B64	2	M10 x 12 WRENCH BOLT	2509428
B65	4	M8 SEMS BOLT	2509429
B66	2	M6 x 16 BOLT	2509430



ADDITIONAL ACCESSORIES

QTY	DP #	DESCRIPTION
1	2508790	HOSE PIPE (PLASTIC)
1	2508791	ELONGATED BRUSH
1	2508793	HOSE ELBOW
1	2505973	15' HOSE, 1 1/2" OD EACH END, INCLUDES 2x COUPLERS (2508985)
1	2505974	30' HOSE, 1 1/2" OD EACH END, INCLUDES 2x COUPLERS (2508985)

OPTIONAL ACCESSORIES

(INCLUDED IN 4244143 CV150S w/METAL WAND)		
1	6079656	METAL WAND ASSEMBLY
		INCLUDED PARTS
1	2505970	HAND TUBE (METAL)
1	2505971	HEAD, FLOOR SQUEEGEE
1	2508985	HOSE COUPLER, 1 1/2" ID, 1 3/4" OD

EQUIPMENT AND PARTS WARRANTY

Diamond Products warrants all equipment manufactured by it against defects in workmanship or materials for a period of 90 Days from the date of shipment to Customer. The responsibility of Diamond Products under this Warranty is limited to replacement or repair of defective parts at Diamond Products' Elyria, Ohio factory, or at a point designated by it, of such parts as shall appear to us upon inspection at such parts, to have been defective in material or workmanship, with expense for transportation and labor borne by Customer. In no event shall Diamond Products be liable for consequential or incidental damages arising out of the failure of any Product to operate properly.

THIS WARRANTY IS IN LIEU OF ALL OTHER WARRANTIES, EXPRESSED OR IMPLIED, AND ALL SUCH OTHER WARRANTIES ARE HEREBY DISCLAIMED.



333 Prospect Street, Elyria, Ohio 44035
(440) 323-4616 • (800) 321-5336 • Fax (800) 634-4035
www.diamondproducts.com