



**CORE VAC
PARTS LIST**

**CV258LC
ELECTRIC VAC**

JULY, 2024

CV258LC PARTS LIST

Table of Contents

Introduction.....	4
Head.....	6
Filter	8
Agitator.....	10
Main Drum.....	12
Dust Drum	14
Additional Parts.....	16
Notes.....	17
Warranty.....	20

Introduction

Welcome to the Diamond Products family and thank you for choosing Diamond Products equipment. At Diamond Products we are driven to ensure you are completely satisfied with your product and continually strive to improve our product line so that we can offer you the best possible equipment in the industry.

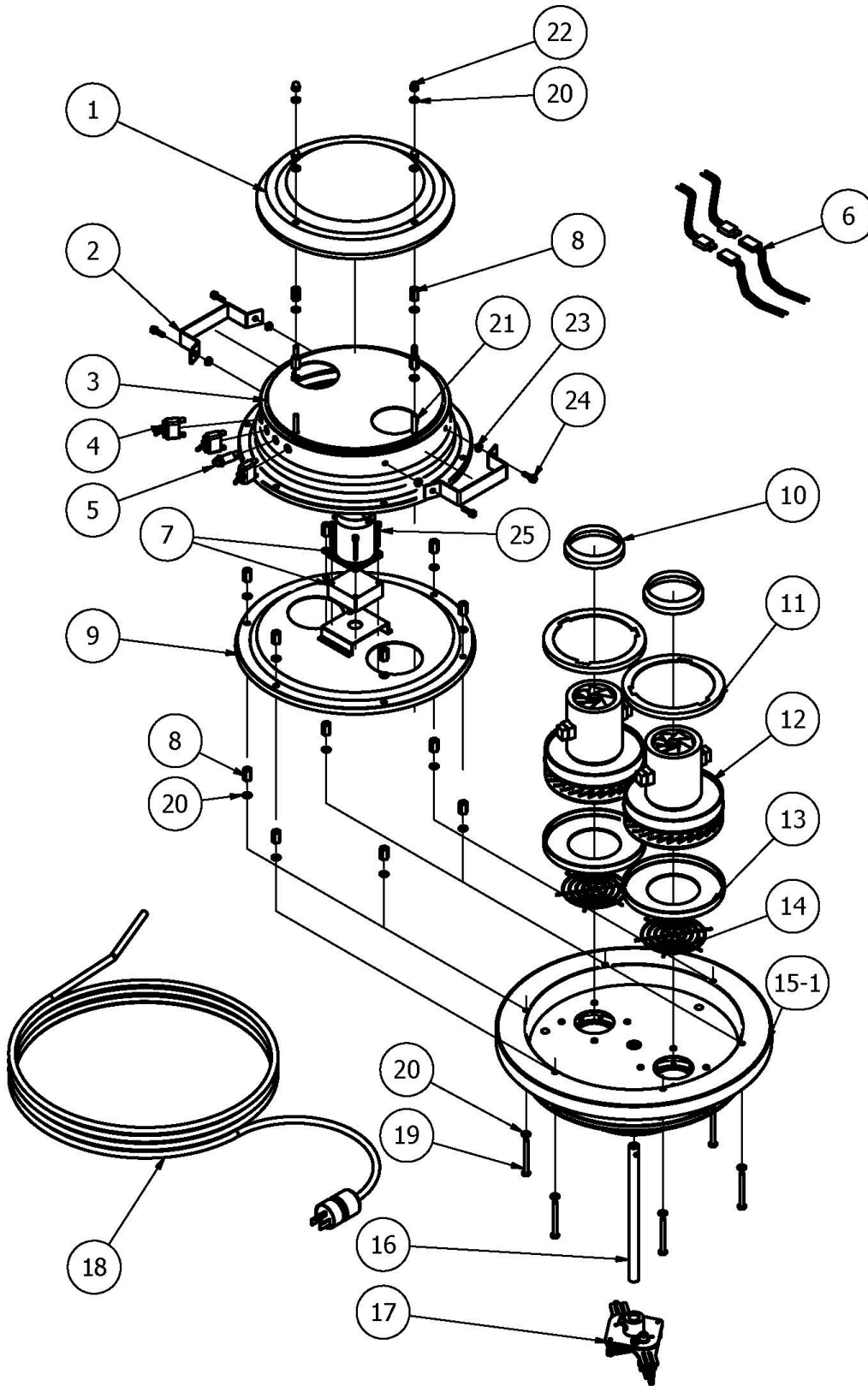
This operator's manual is a critical document that provides pertinent information regarding the safety, operation, maintenance, and care of your new equipment. Keep this manual available at all times. Operate the equipment and all of its components according to this manual. Failure to comply with and understand the following safety, operation and maintenance instructions can result in serious injuries and/or death. All operators must be properly trained or supervised by experienced personnel prior to using this equipment and should understand the risks and hazards involved. Diamond Products discourages improper or unintended equipment usage and cannot be held liable for any resulting damages.

Equipment modifications should be made by Diamond Products to ensure safety and design. Any modifications made by the owner(s) are not the responsibility of Diamond Products and void all equipment warranties if a problem arises as a result of the modification.

Refer to the Diamond Products Parts List for additional information and part diagrams. Refer to the engine/motor manual and manufacturer as the primary source for all safety, operations, and maintenance instructions regarding the engine/motor. Prior to operating, record the equipment's serial number, and the engine's/motor's model and serial numbers in Appendix D.

CV258LC PARTS LIST

Head

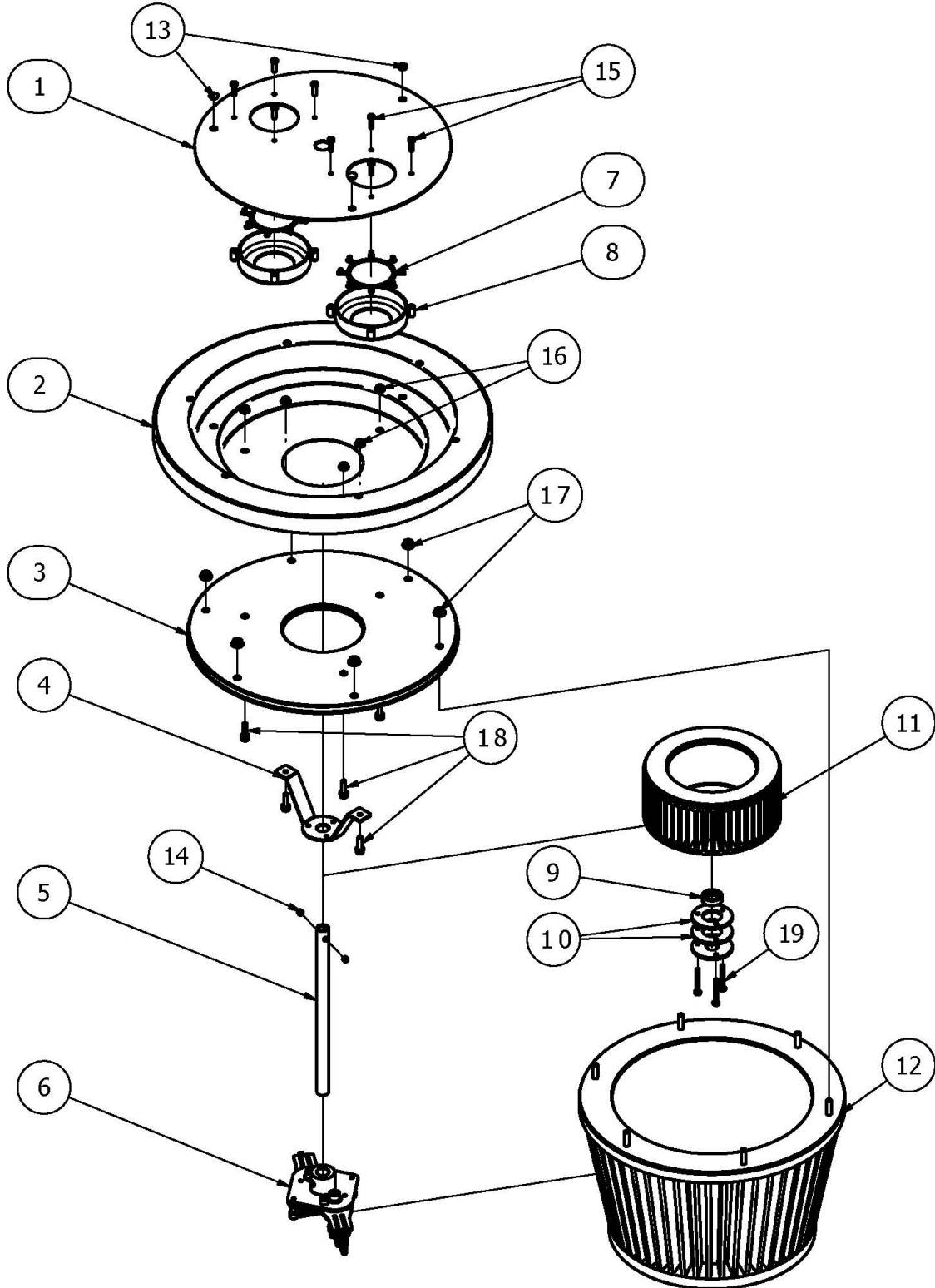


CV258LC PARTS LIST

ITEM	PART NO.	DESCRIPTION
1	2508649	TOP HEAD COVER
2	2508586	HEAD HANDLE
3	2508650	MID COVER
4	2508585	ON/ OFF SWITCH
5	2508610	LED LAMP
6	2508596	MOTOR & ON/OFF SWITCH CABLE CONNECTOR
7	2508611	REDUCER MOTOR SET
8	2508593	M8X16-11MM LONG NUT
9	2508651	MID COVER (2)
10	2508595	TOP OF MOTOR COVER
11	2508597	MID MOTOR COVER
12	2508581	MAIN MOTOR
13	2508598	LOWER MOTOR COVER
14	2508599	MASH COVER
15-1	2508652	END HEAD FRAME
16	2508658	SHAFT
17	2508655	SHAKE BAR
18	2509132	POWER CORD
19	2509152	M6X60 BOLT
20	2508889	M6 WASHER
21	2509150	M6X35 BOLT
22	2509145	M6 ACORN NUT
23	2508894	M5 FLANGE NUT
24	2508895	M5 BOLT SET

CV258LC PARTS LIST

Filter

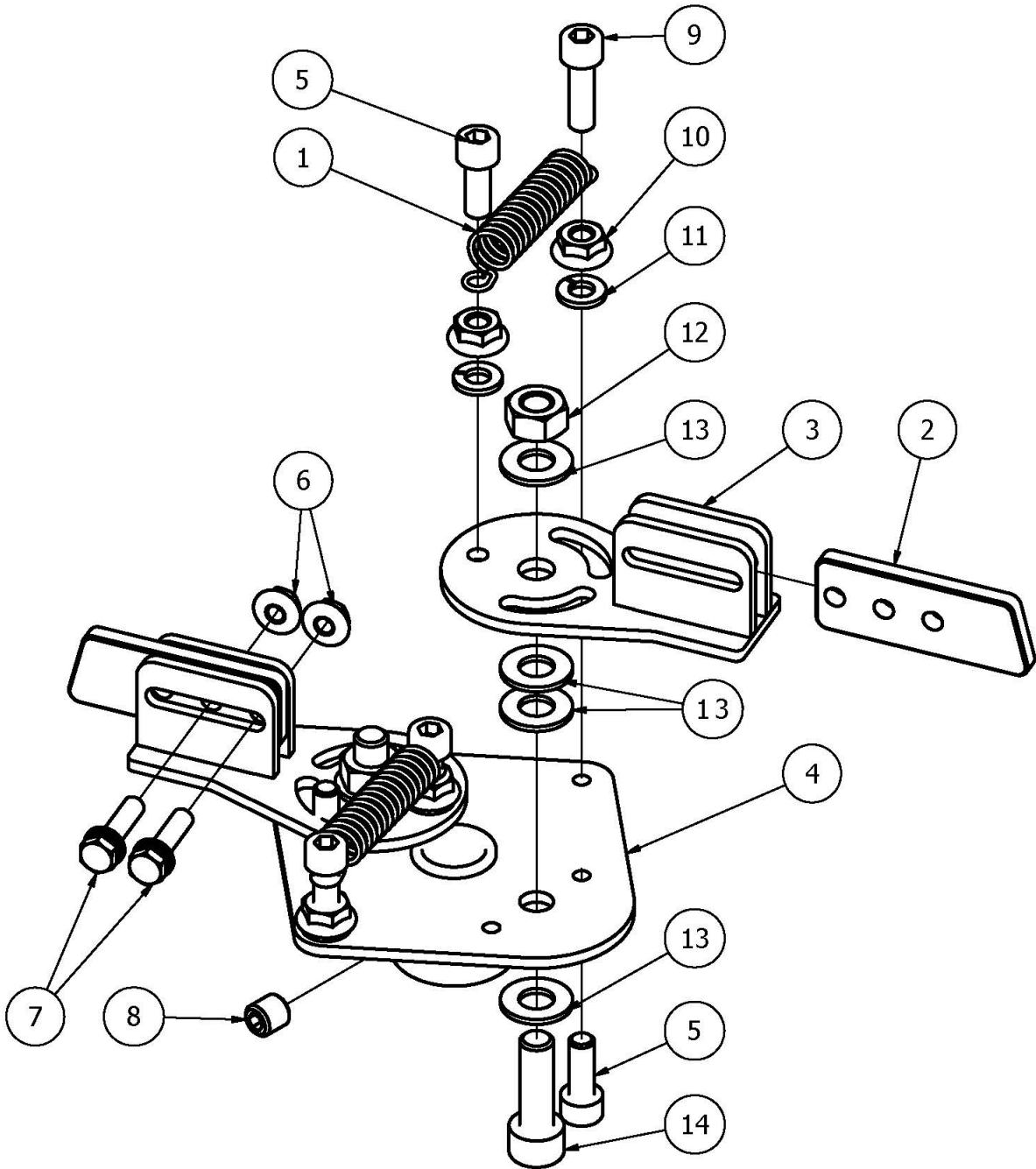


CV258LC PARTS LIST

ITEM	PART NO.	DESCRIPTION
1	2509113	UPPER HEAD COVER
2	2508652	END HEAD FRAME
3	2509114	LOWER HEAD COVER
4	2508656	FILTER BRIDGE
5	2508658	SHAFT
6	2508655	SHAKE BAR
7	2509117	BACK FLOW PREVENTION CAP 1
8	2509118	BACK FLOW PREVENTION CAP 2
9	2508619	SILICON RETAINER
10	2508657	THICK WASHER SET
11	2508571	HEPA FILTER
12	2508572	MAIN FILTER
13	2509133	5MM RIVET
14	2509151	M6X5 SOCKET SET SCREW
15	2509139	M4X16 BUTTON HEAD SCREW
16	2508894	M5 FLANGE NUT
17	2509146	M6 FLANGE NUT
18	2508895	M5 BOLT SET
19	2509140	M4X35 BUTTON HEAD BOLT

CV258LC PARTS LIST

Agitator



CV258LC PARTS LIST

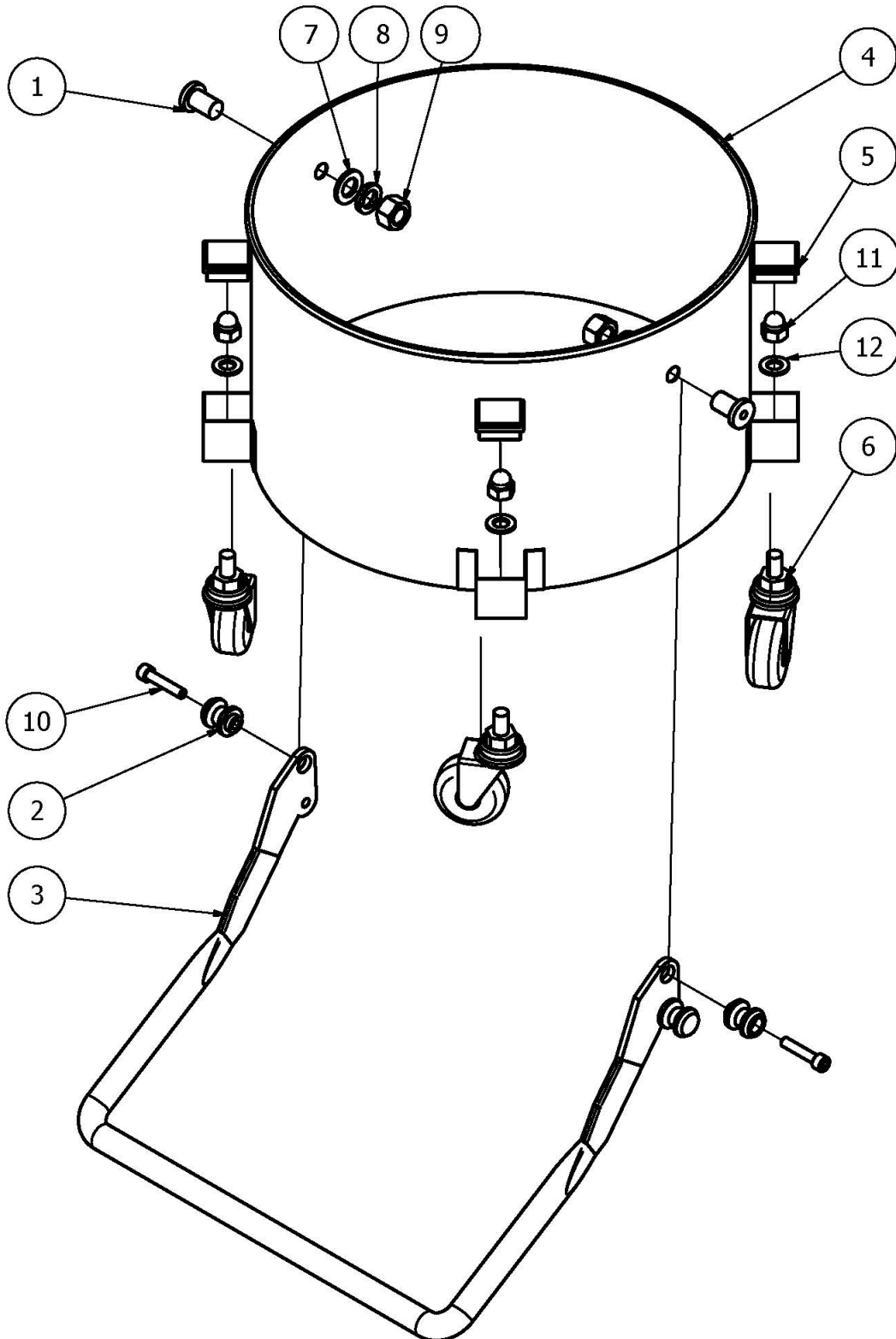
ITEM	PART NO.	DESCRIPTION
1	2508584	SPRING
2	2508622	BLUE CHIP
3	2508660	BLUE CHIP FRAME
4	2508661	SHAKE BAR FRAME
5	2509148	M6X16 SOCKET BOLT
6	2508894	M5 FLANGE NUT
7	2508895	M5 BOLT SET
8	2509159	M8X8 SOCKET SET SCREW
9	2509149	M6X20 SOCKET BOLT
10	2509146	M6 FLANGE NUT
11	2509147	M6 SPRING WASHER
12	2508892	M8 LOCK NUT
13	2508891	M8 WASHER
14	2509156	M8X25 SOCKET BOLT

CV258LC PARTS LIST

ITEM	PART NO.	DESCRIPTION
1	2508662	RUBBER SEAL
2	2508663	GASKET
3	2508664	MAIN DRUM
4	2508627	HOOK CLAMP
5	2509125	30X30 PVC CAP
6	2509119	POLE FRAME
7	2508631	DRUM HANDLE
8	2509115	LEVER SUPPORT STAND
9	2508666	CYCLONE COVER
10	2509124	DUST DRUM RUBBER SEAL
11	2509122	TOOL BOX
12	2509123	LOWER FRAME
13	2509126	GROUND CHAIN
14	2508665	HANDLE(2700AC)
15	2509120	MAIN DRUM BRACKET
16	2509121	POLE FRAME JOINT
17	2508668	TURN WHEEL 3"
18	2508669	WHEEL 5"
19	2508895	M5 BOLT SET
20	2509160	M10 ACORN NUT
21	2508884	M10 SPRING WASHER
22	2508885	M10 WASHER
23	2509143	M5 SPRING WASHER
24	2509141	M5 ACORN NUT
25	2509142	M5 NUT
26	2509144	M5X10 BUTTON HEAD WRENCH BOLT
27	2509136	M10X50 BOLT
28	2509137	M12 ACORN NUT
29	2509138	M12 WASHER
30	2509161	M4 SCREW
31	2509153	M8 ACORN NUT
32	2508891	M8 WASHER
33	2509142	M5 NUT
34	2509157	M8X50 BOLT
35	2509134	M10 FLANGE NUT
36	2508883	M10X20 BOLT
37	2509154	M8 NUT
38	2509155	M8 SPRING WASHER
39	2509158	M8X55 CARRRIAGE BOLT
40	2509163	INTAKE

CV258LC PARTS LIST

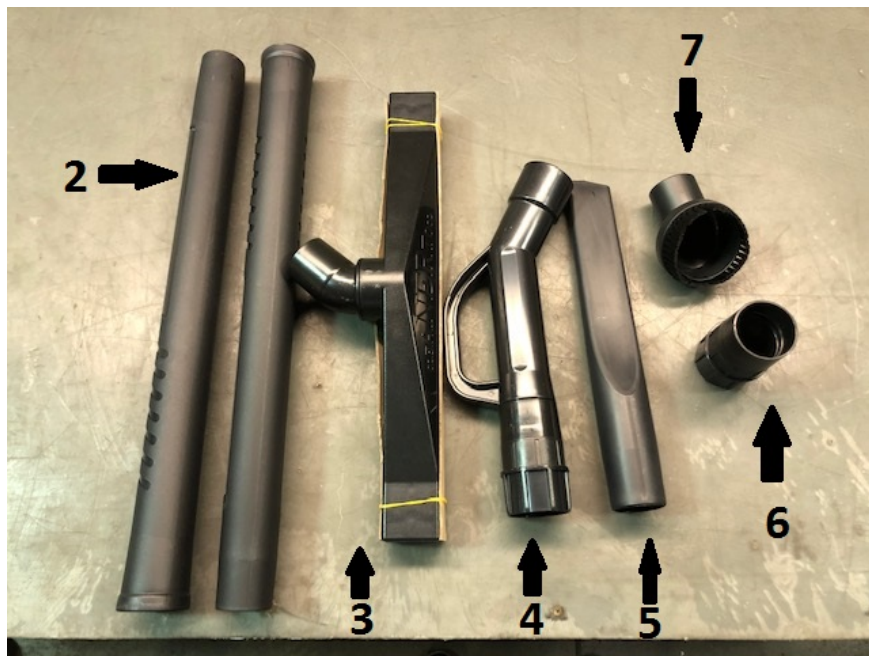
Dust Drum



CV258LC PARTS LIST

ITEM	PART NO.	DESCRIPTION
1	2509128	LEVER JOINT BOLT
2	2509129	LEVER JOINT
3	2509127	LEVER
4	2509116	DUST DRUM
5	2509131	PVC CAP
6	2509130	DUST DRUM WHEEL 2.5"
7	2508939	M16 WASHER
8	2508938	M16 SPRING WASHER
9	2508937	M16 NUT
10	2509162	M8X40 SOCKET HEAD CAP BOLT
11	2509137	M12 ACORN NUT
12	2509138	M12 WASHER

Additional Parts



	DP #	DESCRIPTION
1	2508588	Hose(10m)
2	2508794	Pipe
3	2508795	Elongated Brush
4	2508796	Elbow
5	2508810	Nozzle
6	2508797	Hose socket
7	2508811	Circle brush

Proposition 65
State of California

Warning !

Engine exhaust and some its constituents are known to the State of California to cause cancer, birth defects, and/or other reproductive harm.

Notification of Spark Arrester Requirement for
State of California

It is a violation of Section 4442 or 4443 to use or operate the engine on any forest-covered, brush-covered, or grass-covered land unless the engine is equipped with a spark arrester, as defined in Section 4442, maintained in effective working order or the engine is constructed, equipped, and maintained for the prevention of fire pursuant to Section 4443.

EQUIPMENT AND PARTS WARRANTY

Diamond Products warrants all equipment manufactured by it against defects in workmanship or materials for a period of one (1) year from the date of shipment to Customer.

The responsibility of Diamond Products under this Warranty is limited to replacement or repair of defective parts at Diamond Products' Elyria, Ohio factory, or at a point designated by it, of such parts as shall appear to us upon inspection at such parts, to have been defective in material or workmanship, with expense for transportation and labor borne by Customer.

In no event shall Diamond Products be liable for consequential or incidental damages arising out of the failure of any Product to operate properly.

Integral units such as engines, electric motors, batteries, transmissions, etc., are excluded from this Warranty and are subject to the prime manufacturer's warranty.

THIS WARRANTY IS IN LIEU OF ALL OTHER WARRANTIES, EXPRESSED OR IMPLIED, AND ALL SUCH OTHER WARRANTIES ARE HEREBY DISCLAIMED.



333 Prospect Street, Elyria, Ohio 44035
(440) 323-4616 • (800) 321-5336 • Fax (800) 634-4035
www.diamondproducts.com