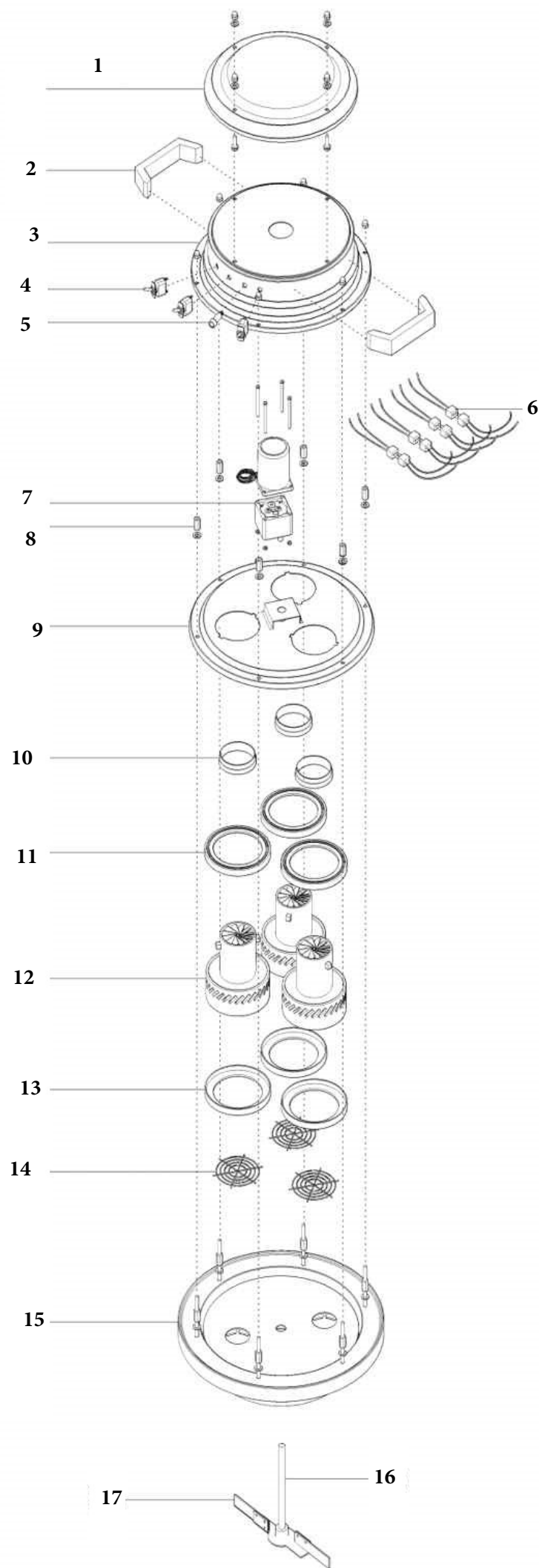




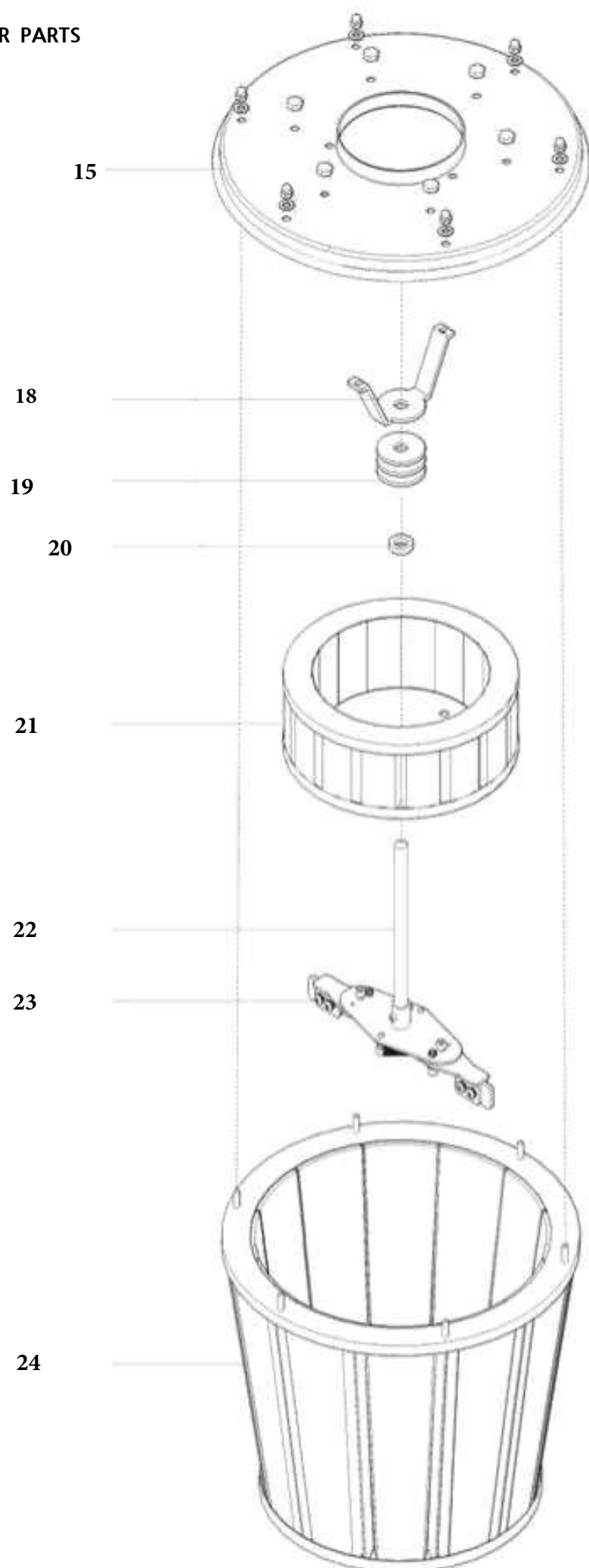
**CORE VAC
PARTS LIST**

**MODEL
CV353B**

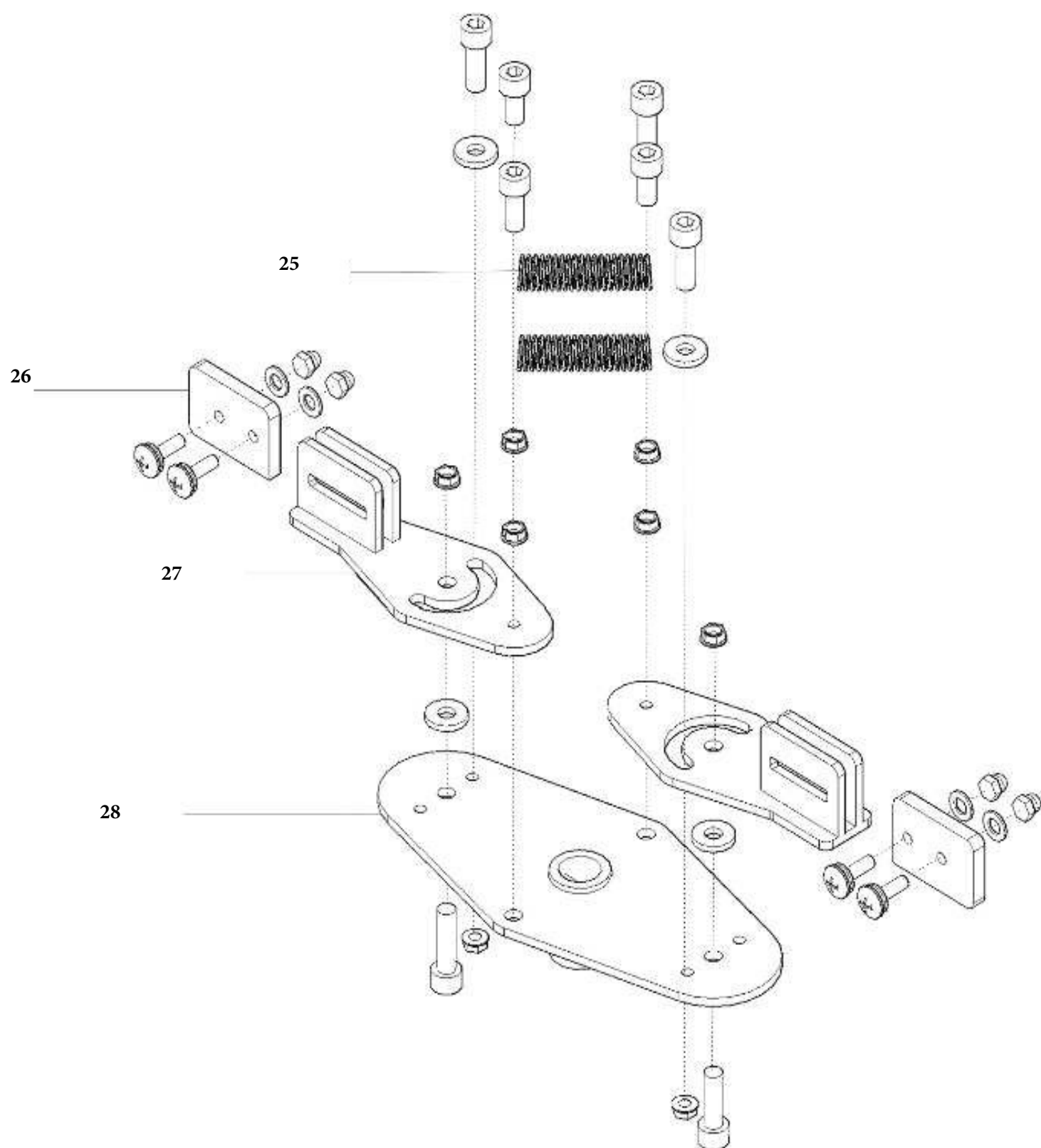
AUGUST 2019



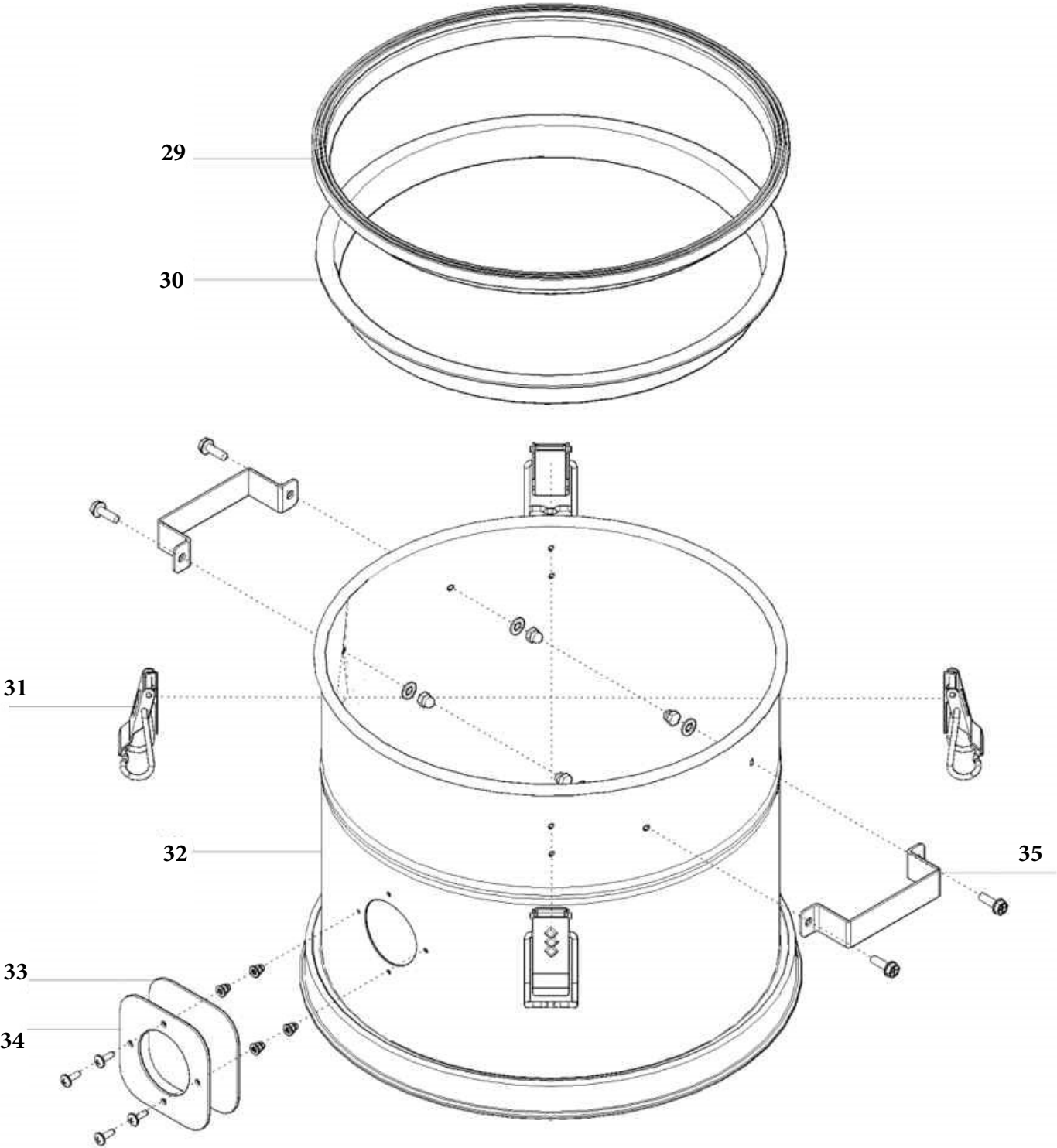
2) FILTER PARTS



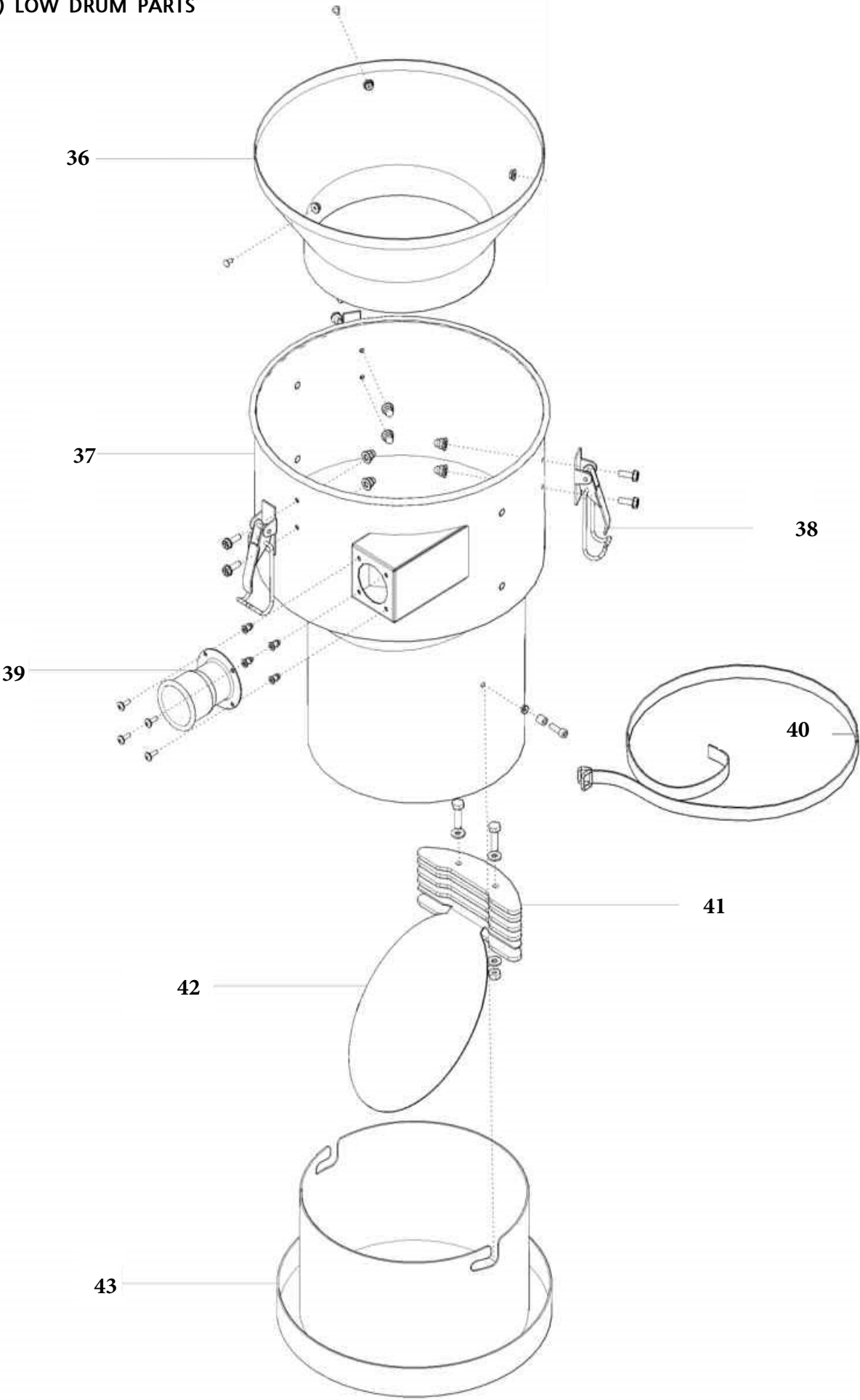
3) CLEANER PARTS



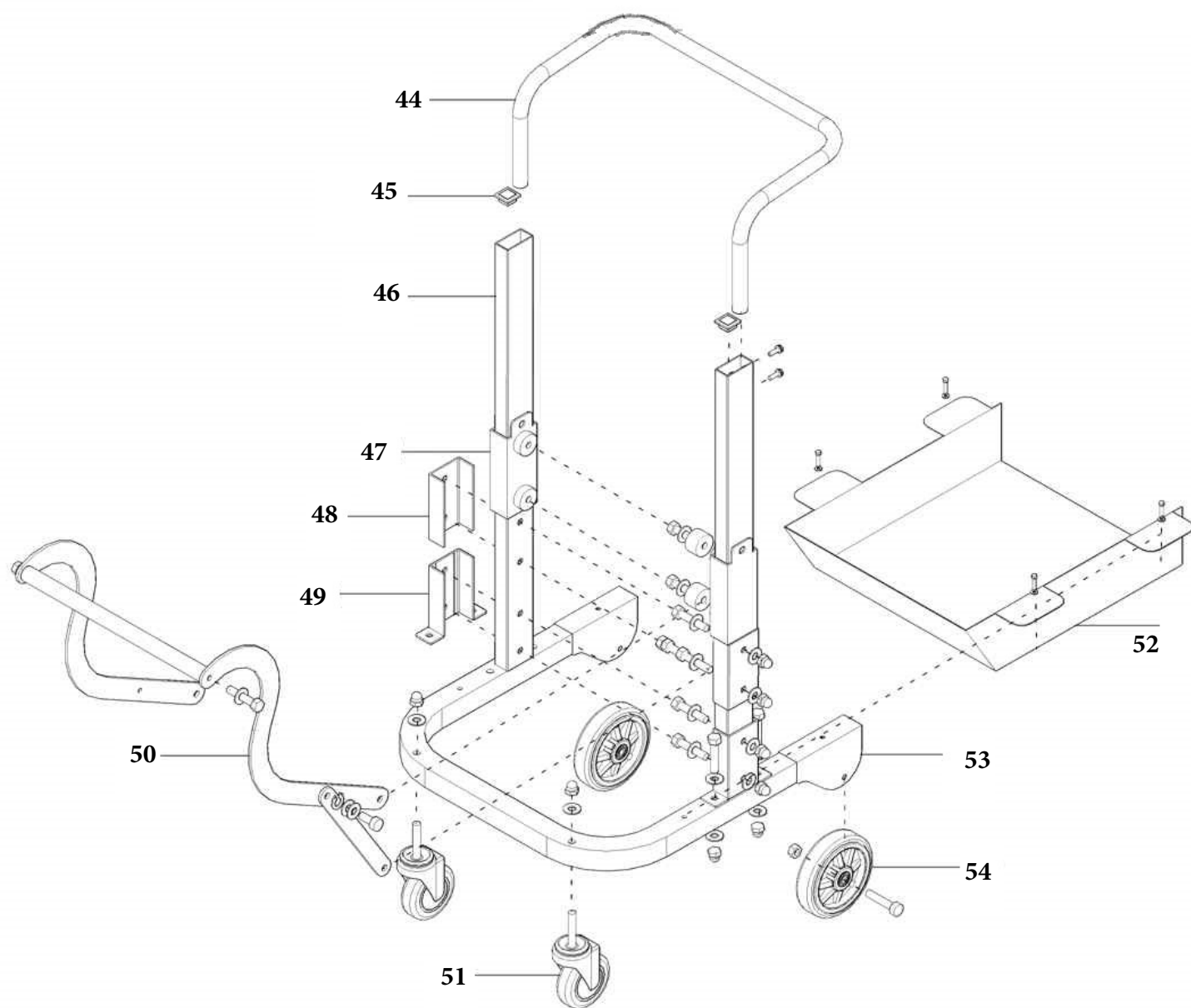
4) MID PARTS



5) LOW DRUM PARTS



6) FRAME PARTS



	DP #	DESCRIPTION
1	2508608	TOP HEAD COVE
2	2508586	HEAD HANDEL
3	2508609	MID COVER
4	2508585	ON/OFF SWITCH
5	2508610	LED LAMP
6	2508596	MOTOR & ON/OFF SWITCH CABLE CONNECTOR
7	2508611	REDUCER MOTOR SET
8	2508593	LONG NUT
9	2508612	MID COVER(2)
10	2508595	MOTOR COVER TOP
11	2508597	MID MOTOR COVER
12	2508581	MAIN MOTOR
13	2508613	MOTOR LOW
14	2508599	MASH COVER
15	2508614	END HEAD FRAME
16	2508621	SHAFT
17	2508616	SHAKE BAR
18	2508617	FILTER BRIDGE
19	2508618	THICK WASHER
20	2508619	SILICON RETAINER
21	2508579	HEPA FILTER
22	2508621	SHAFT
23	2508616	SHAKE BAR
24	2508580	MAIN FILTER
25	2508581	SPRING
26	2508622	BLUE CHIP
27	2508623	BLUE CHIP FRAME
28	2508624	SHAKE BAR FRAME
29	2508525	RUBBER PACKING
30	2508626	GASKET
31	2508627	HOOK CLAMP
32	2508628	MID DRUM
33	2508629	CLEAR VIEW
34	2508630	CLEAR VEIW CASE
35	2508631	DRUM HANDLE
36	2508632	CYCLON COVER
37	2508633	LOW DRUM
38	2508634	HOOK CLAMP(2)
39	2508635	SUCTION HOLE

0	DP #	DESCRIPTION
40	2508636	LONGOPAC FIXED BAND
41	2508637	WEIGHT
42	2508638	VACUUM LOW CAP
43	2508639	LONGO PACK HOLDER
44	2508676	HANDLE
45	2508640	PPC CAP
46	2508641	MAINE FRAME
47	2508642	DRUM SPACER PART HOLDER
48	2508643	HANDLE CONNECTING PART
49	2508644	REINFORCE HOUSING
50	2508645	ELEVATING HANDLE
51	2508583	TURN WHEEL 4"
52	2508646	HOPPER BASKET
53	2508647	MAIN FRAME
54	2508648	WHEEL 6"

This image shows a full page of white paper with horizontal blue or grey ruling lines. The lines are evenly spaced and run across the width of the page, providing a template for handwriting practice or general writing. There are no margins, text, or other markings on the page.

EQUIPMENT AND PARTS WARRANTY

Diamond Products warrants all equipment manufactured by it against defects in workmanship or materials for a period of 90 Days from the date of shipment to Customer. The responsibility of Diamond Products under this Warranty is limited to replacement or repair of defective parts at Diamond Products' Elyria, Ohio factory, or at a point designated by it, of such parts as shall appear to us upon inspection at such parts, to have been defective in material or workmanship, with expense for transportation and labor borne by Customer. In no event shall Diamond Products be liable for consequential or incidental damages arising out of the failure of any Product to operate properly.

THIS WARRANTY IS IN LIEU OF ALL OTHER WARRANTIES, EXPRESSED OR IMPLIED, AND ALL SUCH OTHER WARRANTIES ARE HEREBY DISCLAIMED.



333 Prospect Street, Elyria, Ohio 44035
(440) 323-4616 • (800) 321-5336 • Fax (800) 634-4035
www.diamondproducts.com