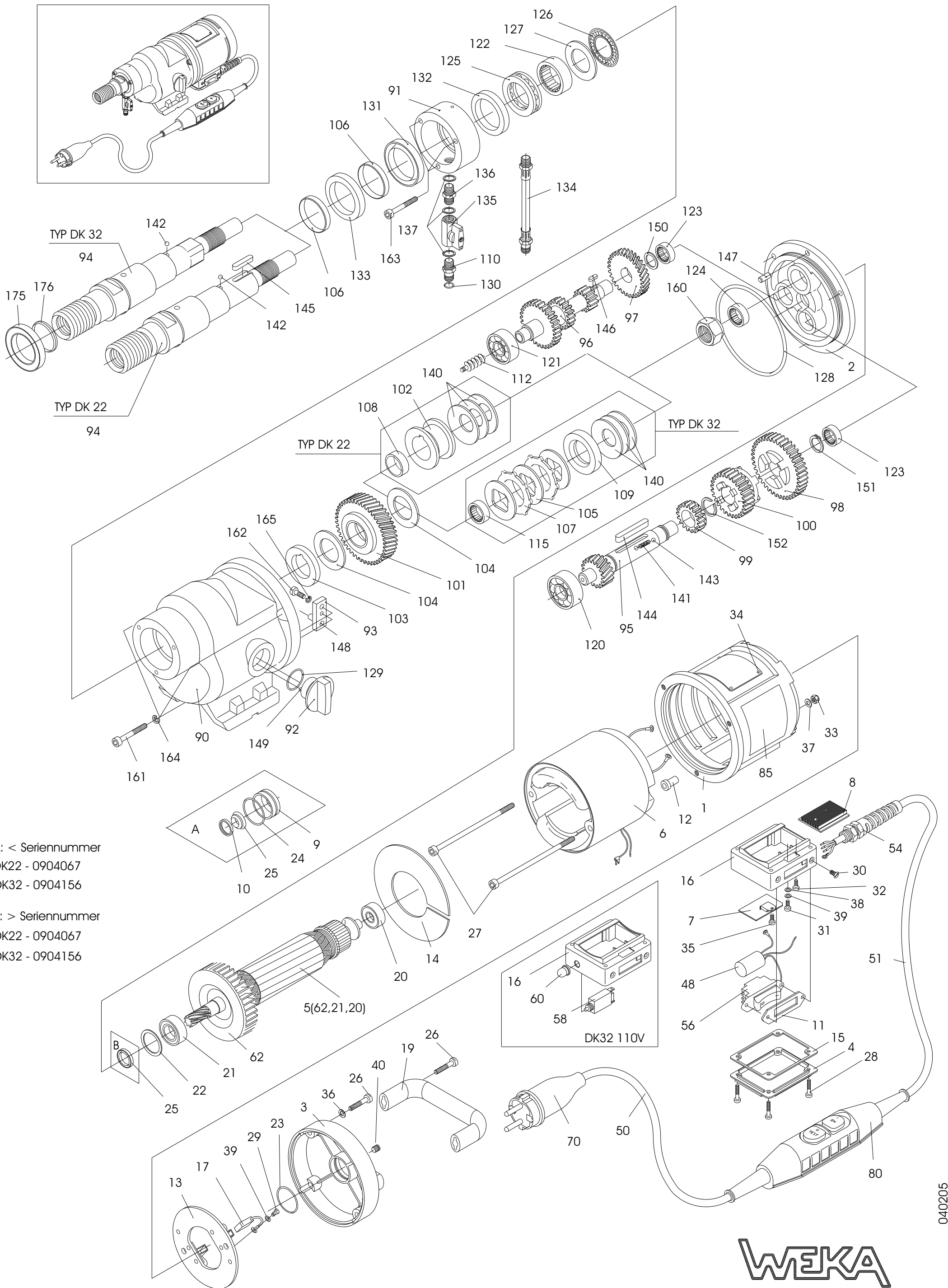


DIAMANT - KERNBOHRMASCHINE TYP DK 22 (L,S), DK 32



A: < Seriennummer
DK22 - 0904067
DK32 - 0904156

B: > Seriennummer
DK22 - 0904067
DK32 - 0904156

Spare Parts Price List DK 22 (L/S) *Revised 2005*

Fig	Req	DESCRIPTION	WEKA	DP
1	1	Motor Case	DK20101	2700831
2	1	Intermediate Flange	DK20102-1	2703255
3	1	Motor Top Hood	DK20103	2700833
4	1	Terminal Case Cover	DK20106	2700834
5	1	Armature w/Fan and Bearings (230V)	DK20108-1	2703251
	1	Armature w/Fan and Bearings (110V)	DK20108/11-1	2703252
6	1	Field (230V)	DK20109	2701524
	1	Field (110V)	DK20109/11	2700836
7	1	Electronic Module (230V)	DK20510	2703257
	1	Electronic Module (110V)	DK20510/11	2703258
8	1	Cooling Profile	DK30140	2703261
	1	Exchange Seal Bush	DK20113-1	2703250
11	1	Switch Sealing	DK20121	2701584
12	2	Field Screw Insulating Sleeve	DK20116	2700839
13	1	Brush Holder Disk	DK20117	2700840
14	1	Air Conducting Disk	DK20118	2700841
15	1	Terminal Case Sealing	DK40122	2701080
16	1	Terminal Case / electronic	DK30130	2703262
	1	Terminal Case / thermal	DK20130	2701396
17	2	Carbon Brush (230V)	DK20125	2701532
	2	Carbon Brush (110V)	DK20125/11	2700845
19	1	Carrying Handle	DK30105	2704245
20	1	Ball Bearing	6062012	2700846
21	1	Ball Bearing	6060021	2700773
22	1	Compensation Washer	2632201	2700848
23	1	O-Ring	4532003	2700849
25	1	Rotary Shaft Seal	5012247	2703241
26	6	Hex. Socket Head Screw <i>M6x35</i>	106035	2700852
27	2	Hex. Socket Head Screw <i>M5x120</i>	105120	2700853
28	4	Fill. Head Screw <i>M4x40</i>	204040	2700854
29	2	Fill. Head Screw <i>M4x6</i>	304006	2700674
30	2	Slot. Count. Head Screw <i>M4x6</i>	414006	2700856
31	1	Slot. Pan Head Screw <i>M4x6</i>	304006	2700674
32	1	Pan Head Tapping Screw <i>3,9x9,5</i>	539095	2700675
33	2	Hexagon Nut <i>M5</i>	1005000	2700858
34	4	Round Head grooved Pin	2223004	2700678
35	1	Th. Roll. Cheese Head Screw <i>M4x6</i>	504006	2701386
36	4	Locking Washer	1806000	2700826
37	2	Curved Spring Washer	1805137	2700861
38	1	Curved Spring Washer	1804137	2700680
39	3	Medium Washer	1804433	2700681
40	1	Slot. Set Screw <i>M6x5</i>	706005	2702566
48	1	Int. Suppr. Capacitor	DK20133	2706625
51	1	Cord AWG 16 230V	8738152	2701541
	1	Cord AWG 14 110V	8738254	2700866
54	1	Cord Gland	8804020	2701451
56	1	Motor Switch	8023005	2700886
62	1	Fan	DK20105	2700692
90	1	Gear Box	DK20201	2700870
91	1	Water Supply Bush	DK20202	2700871
92	1	Gear Change Grip	DK20203	2700872
93	1	Gear Change Lever	DK20205	2700695
94	1	Drilling Spindle 1 1/4" UNC	DK20206	2700874
95	1	Gear Change Shaft	DK20207	2700875
	1	Gear Change Shaft Type L	DK20207L	2701530
	1	Gear Change Shaft Type S	DK20207S	2701082

Fig	Req	DESCRIPTION	WEKA	DP
96	1	Pinion Shaft	DK20208	2700876
97	1	Spur Wheel	DK20209	2700877
98	1	Gear Wheel 1	DK20212	2700878
99	1	Gear Wheel 3	DK20213	2700879
100	1	Slide Gear Wheel	DK20214	2700880
101	1	Spindle Wheel	DK20215	2700881
	1	Spindle Wheel Type L	DK20215L	2701531
	1	Spindle Wheel Type S	DK40215S	2701078
102	1	Pressure Shell	DK20216	2700882
103	1	Supporting Disk	DK20217	2700883
	1	Supporting Disk Type S	DK40217	2701083
104	2	Brake Disk	DK20218	2700884
106	2	Shaft Wearing Sleeve	DK20210	2701064
108	1	Bearing Socket	DK20220	2701079
110	1	Quick Connect Nipple	DK20225	2700706
120	1	Ball Bearing	6063020	2700791
121	1	Ball Bearing	6062010	2700792
122	1	Needle Bearing	6330200	2700793
123	2	Needle Bush	6314120	2700794
124	1	Needle Bush	6320160	2700795
125	1	Thrust Ball Bearing	6551106	2700796
126	1	Thrust Needle Bearing	6530470	2700797
127	1	Thrust Bearing Washer	6530471	2700798
128	1	O-Ring	5510203	2700799
129	1	O-Ring	5520003	2700711
130	1	O-Ring	5511025	2700712
131	1	Rotary Shaft Seal	5040527	2700802
132	1	Rotary Shaft Seal	5038507	2700803
133	1	Rotary Shaft Seal	5040521	2700804
135	1	Ball Valve	7014001	2700715
	1	Grip for Ball Valve	7014005	2700925
136	1	Double Nipple	7014002	2700716
137	3	Sealing Ring	7014003	2700717
140	3	Disk Spring	4045224	2700809
141	1	Pressure Spring	4305235	2700810
142	1	Ball	2205000	2700811
143	2	Ball	2204000	2700720
144	1	Parallel Key	3006045	2700813
145	1	Parallel Key	3006030	2700814
146	1	Parallel Key	3004010	2700815
147	1	Parallel Pin	2506010	2700816
148	1	Parallel Pin	2505015	2700817
149	1	Parallel Pin	2503016	2700723
150	1	Shim Ring	1914201	2700819
151	1	Retaining Ring	3516001	2700820
152	1	Retaining Ring	3620000	2700821
160	1	Hexagon Nut <i>M22x1,5</i>	1022015	2700822
161	3	Hex. Soc. Head Screw <i>M6x50</i>	106050	2700823
162	1	Hex. Soc. Head Screw <i>M5x12</i>	105012	2700733
163	3	Hex. Soc. Head Screw <i>M5x45</i>	105045	2700825
164	3	Locking Washer	1806000	2700826
165	1	Locking Washer	1805000	2700735
	x	1	Gear Oil (<i>300 ml</i>)	9030001
x	1	B-Valve Assembly	N/A	2700806