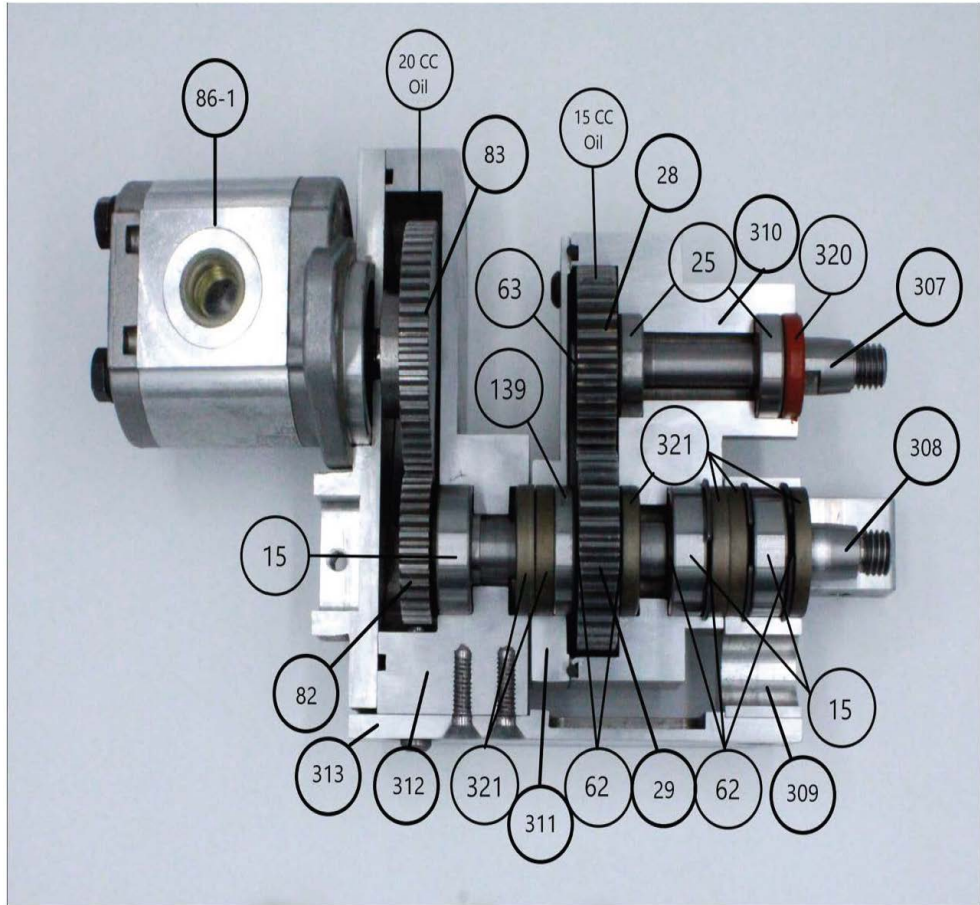
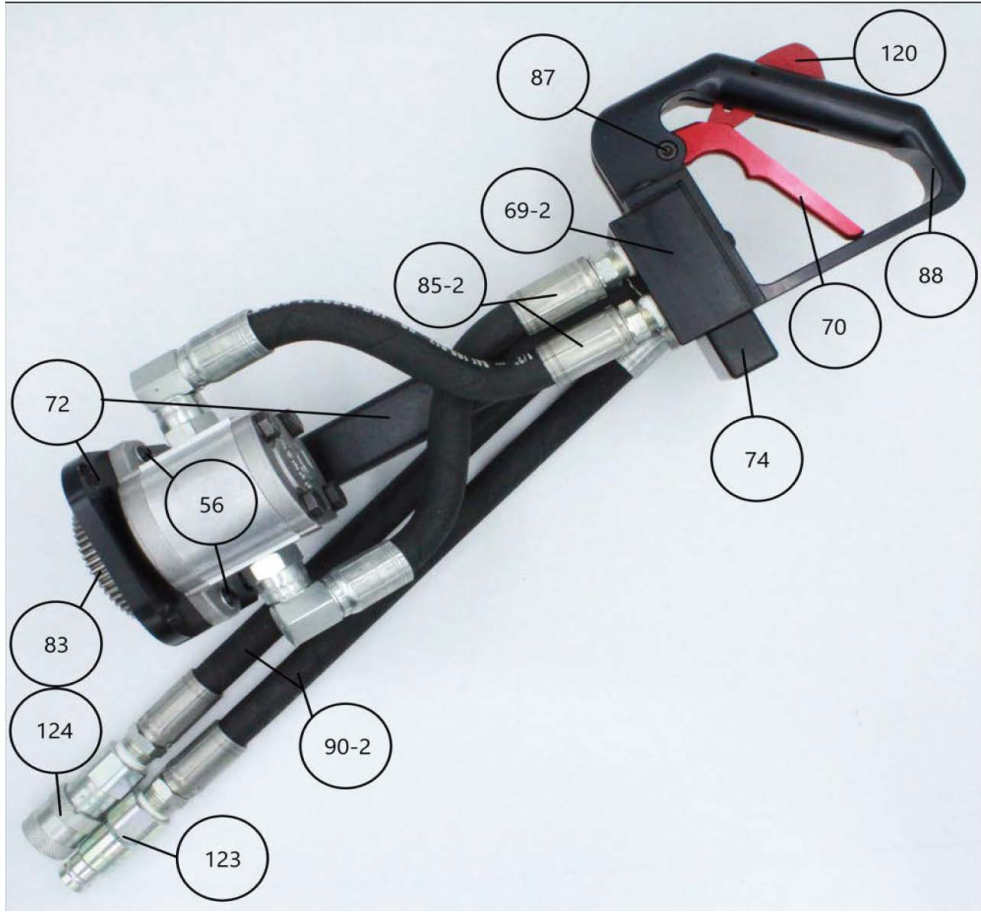


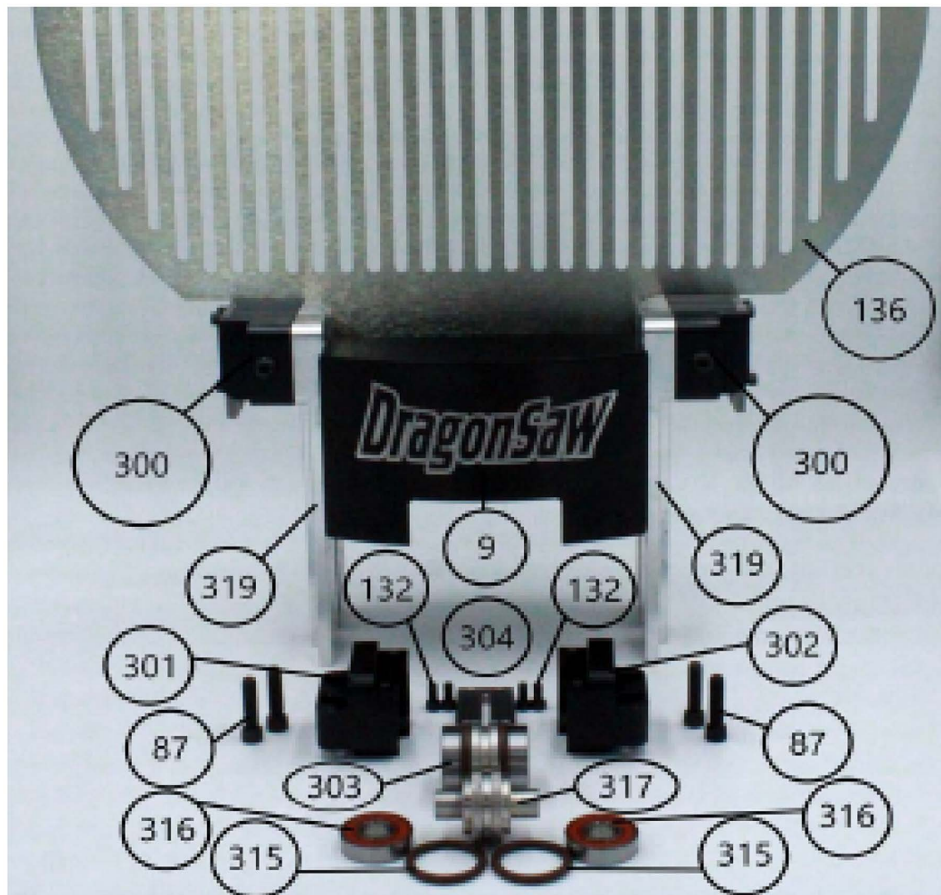
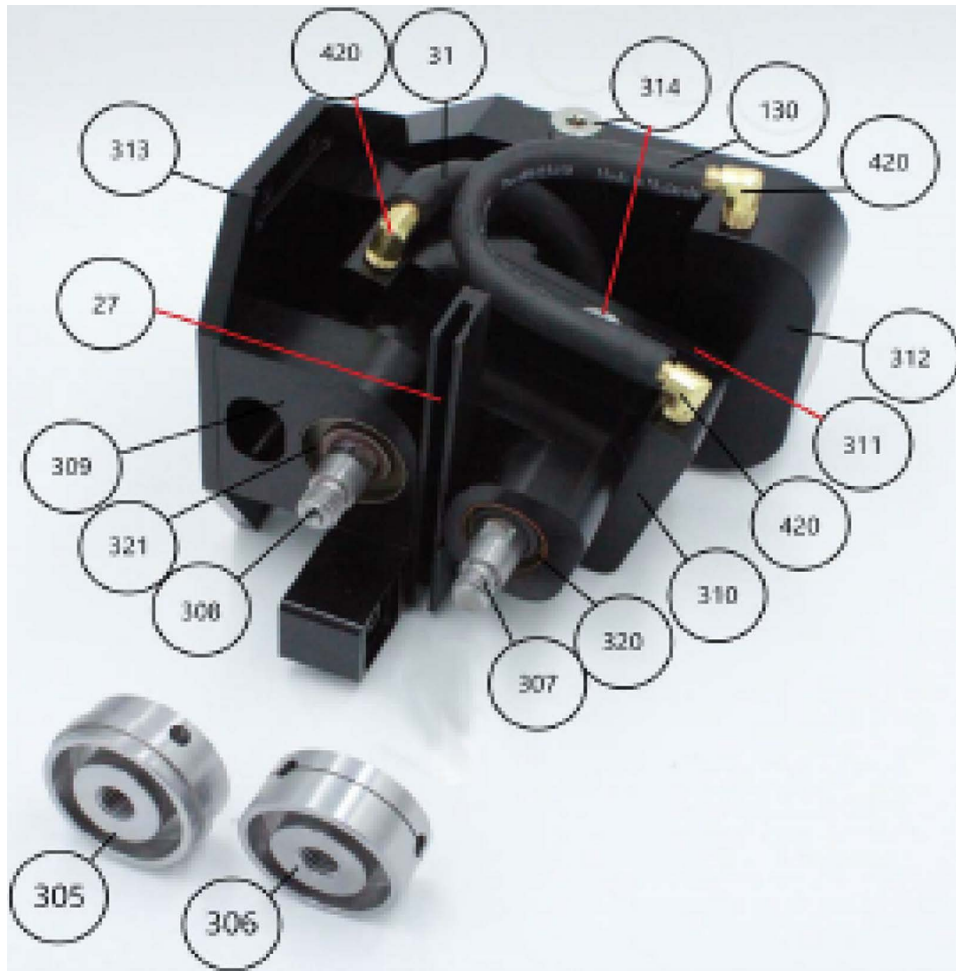


**CONCRETE SAW PARTS
LIST**

**HDS60 DRAGONSAW
RINGSAW**

DECEMBER 2022





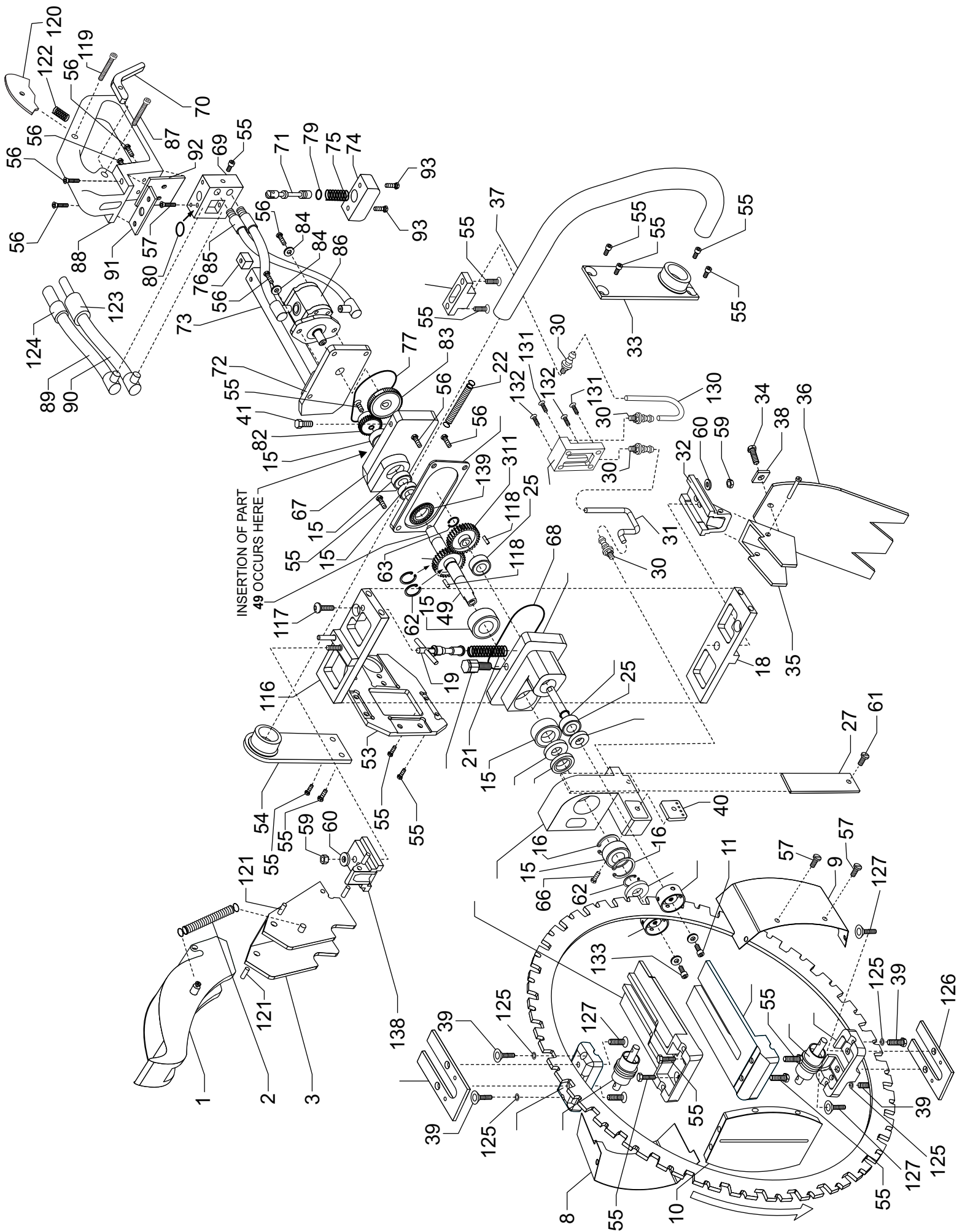


FIG	DP #	QTY	DESCRIPTION
1-2	6061361	1	Blade Guard Complete
1	6061188	1	Plastic Blade Guard
2	6061189	2	Spring
3	6061190	1	Upper Guard
8	6061194	1	Roller Guide Left Shield
9	6061195	1	Roller Guide Right Shield
10	6061196	1	Roller Guide Front Shield
15	6061365	3	Bearing
16	2507020	2	C-Clip
18	6061198	1	Lower Bracket
19	6061199	1	Roller Tensioner
21	6061201	1	Roller Tensioner Spring
22	6061202	1	Spring #2
25	6061366	2	Bearing
27	6061205	1	Water Channel
1	6061243	1	Spur Gear #1 + Spur Gear #2 (set)
30	6061208	1	Water Fitting
31	6061209	1	Water Hose
32	6061210	1	Lower Clamp Block
33	6061211	1	Lower Handle Bracket
34	2900077	1	Hex Screw
35	6061212	1	Lower Guard
36	6061213	1	Rubber Flop Guard
37	6061214	1	Front Handle
38	6061215	1	Washer
54	6061221	1	Top Handle Bracket
55	6061367	14	Flat Socket Cap Screw
56	6061368	6	Button Socket Cap Screw
57	2900247	2	Socket Cap Screw
59	2900018	2	Hex Cap Screw
59-1	2900018	2	Bolt
61	2900427	1	Screw
62	6061369	5	C-Clip
63	2500364	1	C-Clip
68	2505124	1	O-Ring
69-2	6061223	1	1/2 Hydraulic Valve Body
70	6061224	1	Red Trigger
71	6061225	1	Plunger
72	6061226	1	Gear Box Cover & Stem
72-1	6061224	2	Dowel Pin
74	6061228	1	Valve Cap
75	6061229	1	Spring
76	6061230	1	Stem Block
77	2505125	1	O-Ring
79	2505126	1	Quad Seal
80	2706791	1	Quad Seal

82	6061231	1	Small Gear
83	6061232	1	Large Gear
85-2	6061373	2	1/2 Hose Assembly
86-1	6061234	1	8 GPM Cassapa Motor
86-2	6061374	1	12 GPM Cassapa Motor
87	2900088	1	Handle Bolt
88	6061235	1	Handle
90-2	6061375	2	1/2" Hose Assembly
91	6061238	1	Small Heat Insulator
92	6061239	1	Large Heat Insulator
93	2903250	2	Socket Cap Screw
116	6061360	1	Top Bracket & Pin
117	2901754	1	Button Head Screw
118	2901599	2	Key Way
119	2900134	1	Trigger Lock Spring Pin
120	6061245	1	Trigger Lock
121	6061246	1	Guard Stopper Pin
122	6061247	1	Trigger Lock Spring
123	3200105	1	Hydro Male Coupler
124	3200104	1	Hydro Female Coupler
130	6061250	1	Rubber Hose
134	6061353	1	20" Wing support
135	6061354	1	16" Wing Support
136	6061357	1	20" Full Center Support
137	6061356	1	16" Full Center Support
138	6061251	1	Upper Clamping Block
139	2507120	1	Bearing
161	6061375	1	Water Hose Assembly
300	6000061	2	Full Guide Roller Assembly
301	6000062	2	Right Guide Roller Cover
302	6000063	2	Left Guide Roller Cover
303	6000064	2	Guide Roller Bearing & O-Ring
304	6000065	2	U-Plate With Bolts
305	6000066	1	Threated Drive Roller With Lip
306	6000067	1	Threated Drive Roller Smooth
307	6000068	1	Small Roller Shaft
308	6000069	1	Large Roller Shaft
309	6000070	1	Cooling Block
310	6000071	1	Front Transmission
311	6000072	1	Cover Transmission
312	6000073	1	Gear Box
313	6000074	1	Base Plate
314	6000075	2	Oil Plug
315	6000076	4	Guide Roller O-Ring
316	6000077	4	Guide Roller Bearing
317	6000078	2	Guide Roller
318	6000079	1	Brass Plug

319	6000080	2	Adjustable Roller Arm
320	6000081	1	Oil Seal
321	6000082	6	Modified Oil Seal
322	6000083	1	Bearing & Seal kit - 2022
323	6000084	1	Gear Box Complete
324	6000085	1	Water Valve Complete
325	6000086	1	DragonSaw Multitool
326	6000087	1	Skid plate
327	6000088	1	Front Cover Assembly
328	6000089	1	Pusher Bolt
329	6000090	1	Tear Drop
420	6000079	1	1/8 Brass Fitting

EQUIPMENT AND PARTS WARRANTY

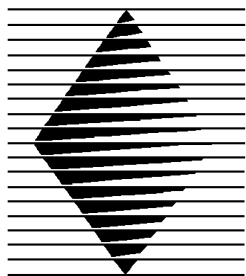
Diamond Products warrants all equipment manufactured by it against defects in workmanship or materials for a period of 90 days from the date of shipment to Customer.

The responsibility of Diamond Products under this Warranty is limited to replacement or repair of defective parts at Diamond Products' Elyria, Ohio factory, or at a point designated by it, of such parts as shall appear to us upon inspection at such parts, to have been defective in material or workmanship, with expense for transportation and labor borne by Customer.

In no event shall Diamond Products be liable for consequential or incidental damages arising out of the failure of any Product to operate properly.

Integral units such as engines, electric motors, batteries, transmissions, etc., are excluded from this Warranty and are subject to the prime manufacturer's warranty.

THIS WARRANTY IS IN LIEU OF ALL OTHER WARRANTIES, EXPRESSED OR IMPLIED, AND ALL SUCH OTHER WARRANTIES ARE HEREBY DISCLAIMED.



DIAMOND PRODUCTS

333 Prospect Street, Elyria, Ohio 44035
(440) 323-4616 • (800) 321-5336 • Fax (440) 323-8689
www.diamondproducts.com