



**CORE CUT
PARTS LIST**

**TR40
HIGH CYCLE RING SAW**

MARCH, 2021

Introduction

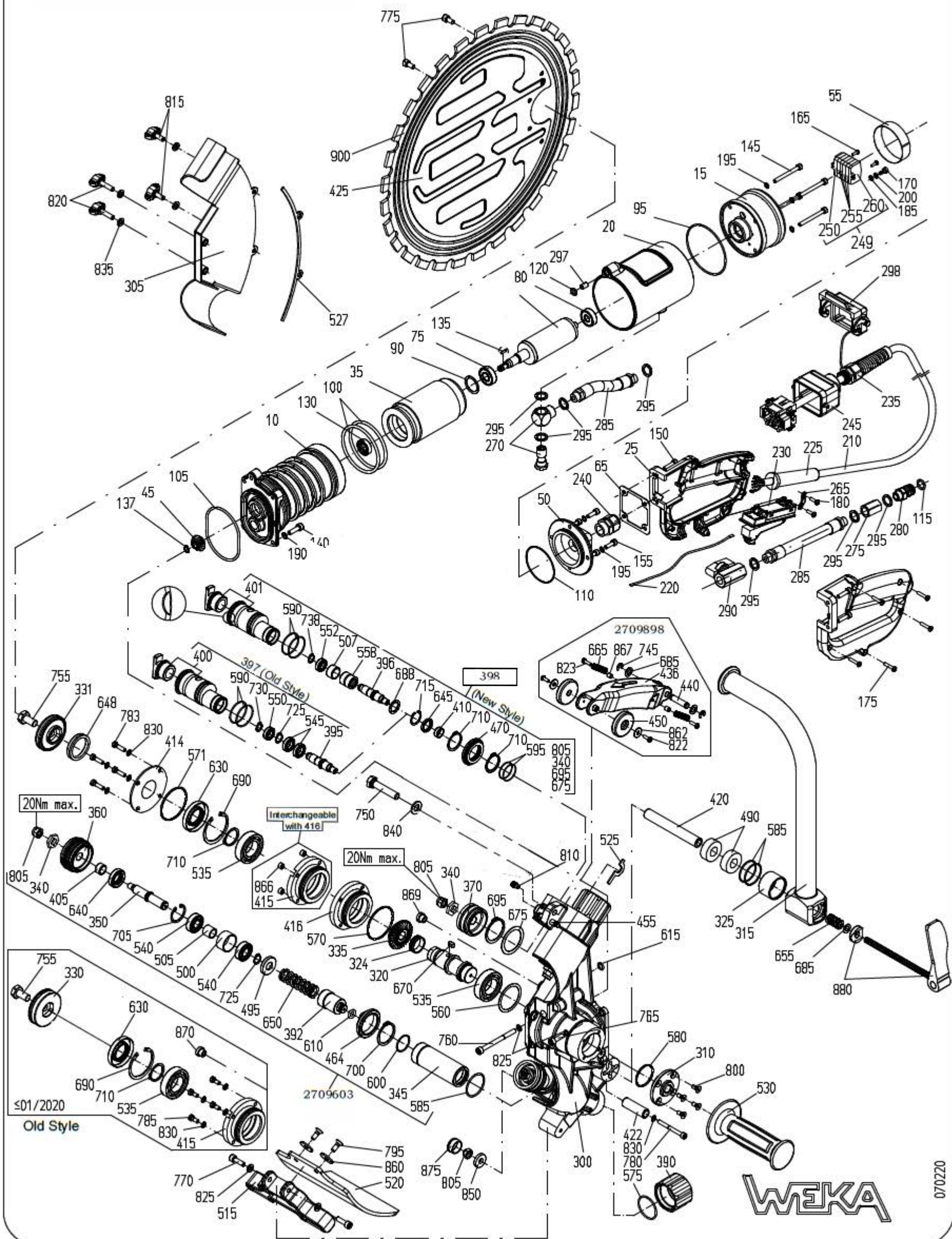
Welcome to the Diamond Products family and thank you for choosing Diamond Products equipment. At Diamond Products we are driven to ensure you are completely satisfied with your product and continually strive to improve our product line so that we can offer you the best possible equipment in the industry.

This operator's manual is a critical document that provides pertinent information regarding the safety, operation, maintenance, and care of your new equipment. Keep this manual available at all times. Operate the equipment and all of its components according to this manual. Failure to comply with and understand the following safety, operation and maintenance instructions can result in serious injuries and/or death. All operators must be properly trained or supervised by experienced personnel prior to using this equipment and should understand the risks and hazards involved. Diamond Products discourages improper or unintended equipment usage and cannot be held liable for any resulting damages.

Equipment modifications should be made by Diamond Products to ensure safety and design. Any modifications made by the owner(s) are not the responsibility of Diamond Products and void all equipment warranties if a problem arises as a result of the modification.

Refer to the Diamond Products Parts List for additional information and part diagrams. Refer to the engine/motor manual and manufacturer as the primary source for all safety, operations, and maintenance instructions regarding the engine/motor.

TR40



WEKA

ITEM	Part #	QTY	DESCRIPTION	EXT
10	2708812	1	Motor case	
15	2708731	1	Motor Top Case	
20	2708732	1	Case Sleeve	
25	2707551	1	Switch Handle cpl.	
30	2708813	1	Rotor with Bearings	
35	2708734	1	Stator cpl.	
45	2708816	1	Bevel Gear Set Fig.45+335	
50	2708736	1	Motor Top Case Hood incl. Fig. 65. 110	
55	2708737	1	Insulation Film	
65	2701567	1	Terminal Case Packing	
75	2700664	1	Ball Bearing	
80	2708738	1	Ball Bearing	
90	2700666	1	Compensation Washer	
95	2700710	1	O-Ring	RDR78X2
100	2708740	2	O-Ring	RDR74X4
105	2702498	1	O-Ring	RDR72X2
110	2709219	1	O-Ring	RDR55X2
115	2700712	1	O-Ring	RDR11x2.5
120	2708809	1	O-Ring	RDR8x2
130	2703241	1	Rotary Shaft Seal	A
135	2708818	1	Parallel Pin	
137	2708820	1	Retaining Ring	9x1 > 08
140	2701049	2	Hex. Socket Head Screw	M6x20
145	2700732	4	Hex. Socket Head Screw	M5x50
150	2707564	4	Hex. Socket Head Screw	M5x20
155	2708811	4	Hex. Socket Head Screw	M5x16
165	2708744	2	Cheese head screw	M3x10
170	2700674	1	Sl. Pan Head Screw	M4x6
175	2700676	5	Pan Head Tapping Screw	F3.9x19 (BZ)
180	2702986	2	Pan Head Tapping Screw	F3.9x13 (BZ)
185	2700680	1	Curved Spring Washer	A4
190	2700826	2	Locking Washer	SM6
195	2700735	8	Locking Washer	SM5
200	2700681	1	Medium Washer	4.3x8x0.5
210	2708815	1	Cord cpl. with male insert. + Fig. 225.235.240.245.298	6G1.5x4.4
220	2709841	1	Switch Strand	1.5 ² x200
225	2707556	1	Cord Sleeve	D12
230	2707533	1	Motor Switch	
235	2708747	1	Cord Gland	EMV
240	2708748	1	Cord Gland	M20x1.56x2.5
245	2708749	1	Hood	6B EMV
249	2709600	1	Terminal Block cpl. with marking (fig.250.255.260)	
250	2708750	1	End Terminal Block with Fixing Flange	

ITEM	Part #	QTY	DESCRIPTION	EXT
255	2708751	4	Center Terminal Block	
260	2708752	1	End Plate with Fixing Flange	
265	2700686	1	Cord Clamping Piece	
270	2701094	1	Angle Screwing	G 1/4"
275	2703211	1	Socket	
280	2700706	1	Quick Connect Nipple	
285	2701939	2	Hose Piece cpl. with nipples	
290	2707565	1	Ball Valve	
295	2700717	7	Sealing Ring	G1/4"
297	2708753	1	Fixing Sleeve	
298	2708754	1	Protective Hood	
300	2708822	1	Gear Box cpl. with Guide Bush. Bow Pin. Seals and O-	
305	2708823	1	Cover cpl. with Distance Bush and Fig. 815.820.835	
310	2708824	1	Bearing Hood incl. O-Ring fig.580	
315	2708825	1	Handle cpl.	
320	2708826	1	Spindle	
324	2709601	1	Shaft Wearing Sleeve	
325	2708761	1	Sleeve	
330	2708828	1	Drive Wheel	
331	2709843	1	Drive Wheel cpl. with V-Ring	> 02 / 2020
335	2708816	1	Bevel Gear Set Fig.45+335 only change as a set	
340	2708666	4	Hex Washer	
	2709603	2	Guide Sleeve cpl. without Guide Roller	
345	2708831	2	Guide Sleeve	
350	2708832	2	Roller Shaft	
360	2708616	2	Guide Roller kpl. incl. Fig. 805	
370	2708833	2	Support Roller incl. Fig. 805	
390	2708837	2	Knob	
392	2708838	2	Pressure Sleeve incl. O-Ring fig.610	
395	2708839	2	Roller Shaft (Old Style)	
396	2709604	2	Roller Shaft (New Style 2019)	
397	2709605	2	Eccentric Shaft cpl. without Support Roller (Old Style)	
398	2709310	2	Eccentric Shaft cpl. without Support Roller (New Style)	
400	2708840	2	Eccentric Shaft incl. T-Knob (Old Style)	
401	2709606	2	Eccentric Shaft incl. T-Knob (New Style 2019)	
405	2708841	2	Shaft Wearing Sleeve	
410	2708843	2	Shaft Wearing Sleeve	

ITEM	Part #	QTY	DESCRIPTION	EXT
414	2709844	1	Protection disc	
	2709845	1	Conversion Kit - New Sealing System	
415	2708844	1	Bearing Ring incl. O-Ring fig.570	
416	2709846	1	Bearing Ring incl. O-Ring fig.570	
420	2708769	1	Handle Axle	
422	2708845	1	Stop Sleeve	
425	2708771	1	Guide Blade	
	2709898	1	Guard Bow cpl.	
436	2709899	1	Guard Bow (short)	
440	2708847	1	Bow Axle	
445	2708848	1	Bow Axle	
450	2708849	2	Bow Wheel	
455	2709612	1	Bow Pin	
460	2708850	1	Bow Pin	
464	2708851	2	Protection Sleeve cpl.	
470	2708853	2	Protection Sleeve cpl. w. O-Rings fig.595	
490	2708852	2	Adjust Sleeve	
495	2708854	2	Pressure Disk	
500	2708855	2	Distance Sleeve	
505	2708856	2	Distance Sleeve	
507	2709608	2	Distance Sleeve	
515	2708857	1	Stand	
527	2709609	1	Housing seal	
530	2700707	1	Handle	
535	2702478	2	Ball Bearing	6005
540	2700664	4	Ball Bearing	6001ZZ
545	2708860	4	Ball Bearing	6801ZZ
550	2708861	2	Ball Bearing	6800ZZ
552	2709610	2	Ball Bearing	698ZZ
558	2709611	2	Needle Bearing	NK12/16
560	2708862	1	Compensation Washer	
570	2708863	1	O-Ring	RDR 50x2
571	2709847	1	O-Ring	RDR 50x1.5
575	2702502	2	O-Ring	RDR 34x2
580	2708864	1	O-Ring	RDR 32x2
585	2701866	4	O-Ring	RDR 32x1.5
590	2702503	4	O-Ring	RDR 30x1.5
595	2708865	4	O-Ring	RDR 25x1
600	2700668	2	O-Ring	RDR 24x1.5
610	2708867	2	O-Ring	RDR 8X3
615	2708809	1	O-Ring	RDR 8x2
630	2702493	1	Rotary Shaft Seal	RWD25x47x
640	2708869	2	Rotary Shaft Seal	RWD15x28x

ITEM	Part #	QTY	DESCRIPTION	EXT
645	2708870	2	Rotary Shaft Seal	RWD15x21x
648	2709848	1	V-Ring	
650	2708871	2	Pressure Spring	2.8x16.1x65
655	2708779	1	Pressure Spring	2.0x12.5x22.5
665	2708873	2	Extension Spring	1.0x7.0x30
670	2700815	1	Parallel Pin	A5x5x10
675	2708874	2	Shim Ring	PS35x45x1
685	2708781	5	Shim Ring	PS8x14x1
688	2709613	2	Supporting Disk	SS15x21x1.5
690	2700729	1	Retaining Ring	J47x1.75
695	2708875	2	Retaining Ring	A35x1.5
700	2708876	2	Retaining Ring	A32x1.5
705	2708877	2	Retaining Ring	J28x1.2
710	2700728	5	Retaining Ring	A25x1.2
715	2708878	2	Retaining Ring	JV21x1
725	2705400	4	Retaining Ring	A12x1
730	2707563	2	Retaining Ring	A10x1
735	2708880	2	Retaining Ring	> 04 / 18
	2708743	2	Retaining Ring	< 04 / 18
738	2708743	2	Retaining Ring	A8x0.8
740	2708879	2	Retaining Ring	A6x0.7
745	2708880	4	Retaining Ring	RA6
750	2708881	2	Hexagon Head Screw	M10x50
755	2708603	1	Hexagon Head Screw	
760	2708883	1	Hex. Socket Head Screw	M6x70
765	2701049	1	Hex. Socket Head Screw	M6x20
770	2702370	2	Hex. Socket Head Screw	M6x16
775	2708800	2	Hex. Socket Head Screw	M6x12
780	2708694	1	Hex. Socket Head Screw	M5x45
783	2709849	4	Hex. Socket Head Screw	M5x20
785	2708884	4	Hex. Socket Head Screw	M5x12
788	2708885	2	Hex. Socket Head Screw	M4x10
795	2708887	2	Count. Head Screw	M6x16
800	2702528	4	Count. Head Screw	M5x12
805	2708667	5	Hexagon Nut with torque insert	M8
810	2708888	2	Hex. Socket Set Screw with dog point	M8x12
815	2708889	2	Wing Screw	M6x15
820	2708890	2	Wing screw	M6x25
822	2700675	2	Pan Head Tapping Screw	F3.9x9.5
823	2709850	2	Pan Head Tapping Screw	F3.5x13
825	2700826	4	Locking Washer	SM6

ITEM	Part #	QTY	DESCRIPTION	EXT
830	2700735	5	Locking Washer	SM5
835	2708892	4	Curved Spring Washer	B6
840	2708893	2	Medium Washer	A10.5
845	2708894	2	Medium Washer (PE)	10.5x20x4
850	2708784	1	Medium Washer	8.4x21x4
860	2708893	1	Medium Washer	A10.5
	2702983	2	Medium Washer	6.6x22x2
862	2709851	2	Medium Washer	4.3x12x1
866	2709852	4	Distance Sleeve	5.2/8x5
867	2709853	2	Distance Sleeve	4.5/6x6
869	2709854	1	Rubber Grommet	
870	2708896	1	Rubber Grommet	
875	2708897	1	Plug	
880	2708785	1	Cam Lever cpl. with Pressure Disc	M8
	2708806	1	Male Insert without Male Contacts	10P
	2708807	5	Male Contact	1.5 ²
	2708901	1	Face Pin Wrench	35x5
	2708902	1	Box Wrench	SW 17
	2708899	1	Coding Bridge	
	2708898	1	Gear Oil	30ml

EQUIPMENT AND PARTS WARRANTY

Diamond Products warrants all equipment manufactured by it against defects in workmanship or materials for a period of one (1) year from the date of shipment to Customer.

The responsibility of Diamond Products under this Warranty is limited to replacement or repair of defective parts at Diamond Products' Elyria, Ohio factory, or at a point designated by it, of such parts as shall appear to us upon inspection at such parts, to have been defective in material or workmanship, with expense for transportation and labor borne by Customer.

In no event shall Diamond Products be liable for consequential or incidental damages arising out of the failure of any Product to operate properly.

Integral units such as engines, electric motors, batteries, transmissions, etc., are excluded from this Warranty and are subject to the prime manufacturer's warranty.

THIS WARRANTY IS IN LIEU OF ALL OTHER WARRANTIES, EXPRESSED OR IMPLIED, AND ALL SUCH OTHER WARRANTIES ARE HEREBY DISCLAIMED.



333 Prospect Street, Elyria, Ohio 44035
(440) 323-4616 • (800) 321-5336 • Fax (800) 634-4035
www.diamondproducts.com