



WIRE SAW
PARTS LIST

MODEL
WS25

January 15, 2015

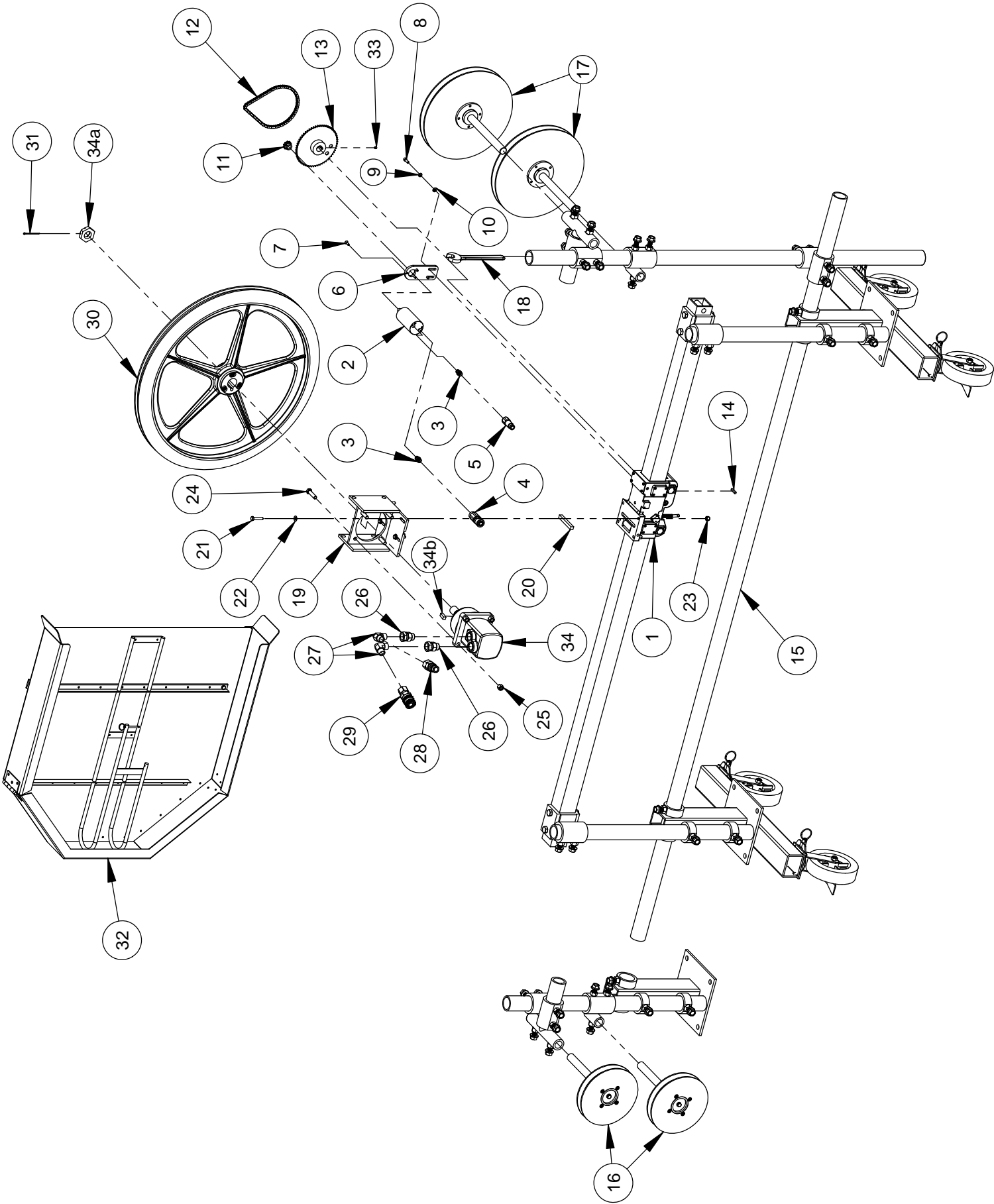
Part # 1800292

Intentionally Blank

Table of Contents

Saw Component Assemblies	
Used with BS-2 Hydraulic Remote Control	4 - 5
Used with Control Station.....	6 - 7
Frame Assembly	8 - 9
Wire Drive Wheel Assembly	10
Wheel Guard Assembly.....	12- 13
Idler Wheel Assemblies.....	14
Roller Carriage Assembly	15 – 16
Warranty	20

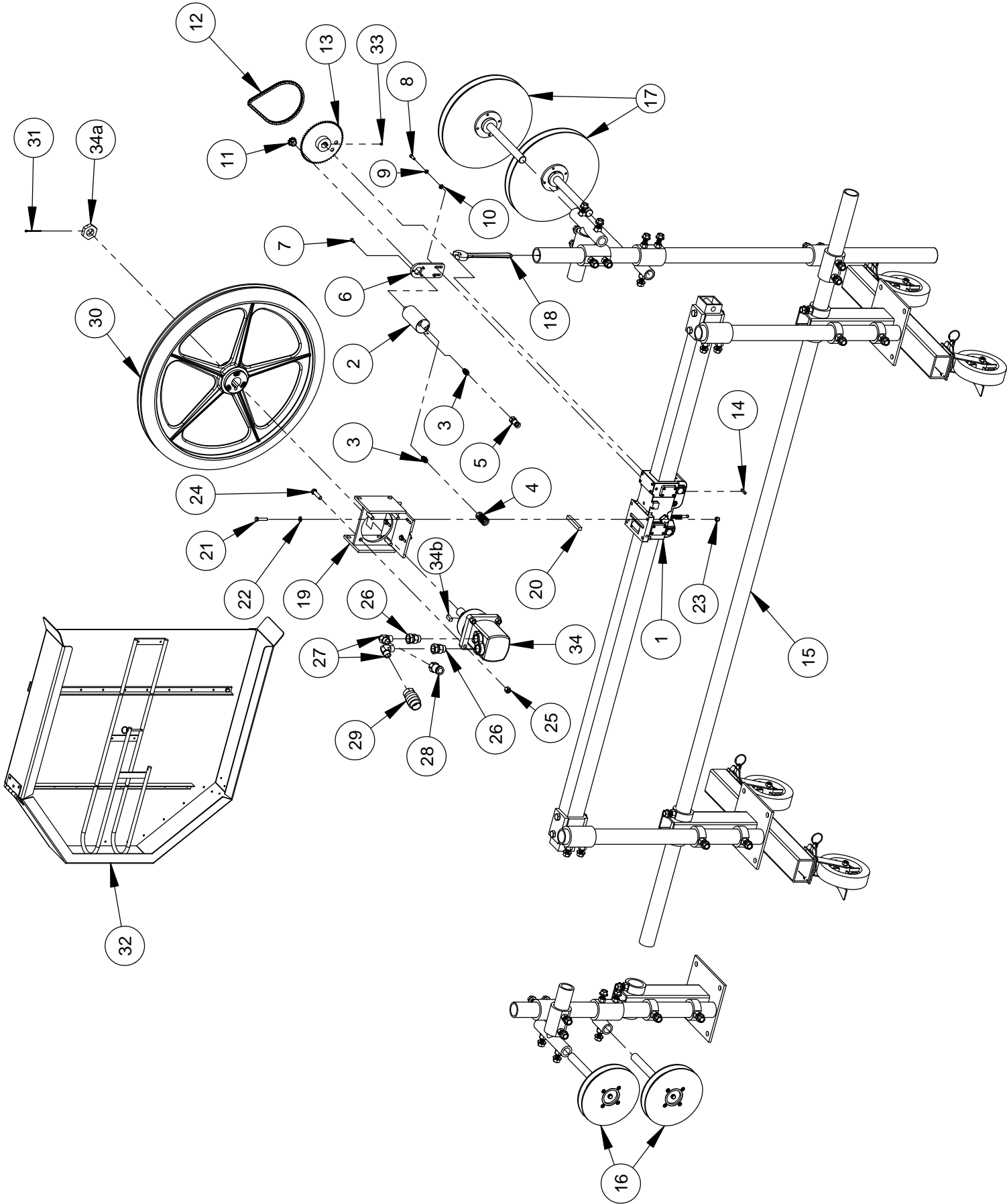
WS25 Wire Saw Assembly #5800061
for use with BS-2 Hydraulic Remote Control



WS25 Wire Saw Assembly #5800061
for use with BS-2 Hydraulic Remote Control

ITEM	PART NO.	QTY.	DESCRIPTION
1	6020019	1	Wire Saw Roller Carriage Assembly
2	2600083	1	Hydraulic Motor, Danfoss OMM32
3	3200109	2	Adapter, 3/8" O-Ring to 3/8" M. Pipe
4	3400121	1	Coupler, 3/8" Flat Face
5	3400122	1	Nipple, 3/8" Flat Face
6	6020013	1	Motor Support Plate
7	2900506	3	Cap Screw, Flat Head, 1/4-28 x 3/4"
8	2900630	2	Cap Screw, Soc. Hd., 5/16-18 X 7/8"
9	2900031	2	Lock Washer, 5/16" Split
10	2900022	2	Flat Washer, 5/16" SAE
11	2500249	1	Sprocket, #35,10 Tooth
12	6020018	1	Chain, #35,68 Pitch Length
13	6020017	1	Sprocket-35BS60 - 3/8" Pitch
14	6010169	1	Key, 1/4" Sq. x 1-1/4"
15	6020123	1	Wire Saw Assembly
16	6020035	2	10" Idler Wheel Assembly
17	6020025	2	16" Idler Wheel Assembly
18	2500211	1	Wrench, 15/16" Open End
19	6020005	1	Drive Wheel Motor Mount
20	4641010	1	Key, 1/2" Sq. x 4" Long
21	2900047	4	Cap Screw, Hex Hd., 3/8-16 x 1-3/4"
22	2900014	4	Flat Washer, 3/8" SAE
23	2900018	4	Locknut, 3/8-16, Nylon
24	2900106	4	Cap Screw, Hex Hd., 1/2-13 x 2"
25	2900026	4	Lock Nut, 1/2-13 Nylon
26	3200094	2	Adapter, 3/4" O-Ring to 3/4" F. Pipe
27	3200036	2	Elbow, 3/4" Male Pipe
28	3400297	1	Nipple, 3/4" Flat Face
29	3400298	1	Coupler, 3/4" Flat Face
30	6020052	1	32" Wire Drive Wheel Assembly
31	2900227	1	Cotter Pin, 1/8" x 2-1/2"
32	6020042	1	36" Wheel Guard Assembly
33	2900073	1	Set Screw, Soc. Hd., 5/16-18 x 5/16"
34	2600084	1	Char-Lynn #110-1083-006
34a	2700604	1	Slotted Hex Nut (Char-Lynn Motor)
34b	2700603	1	Key 7/16" x 1-1/4" (Char-Lynn Motor)

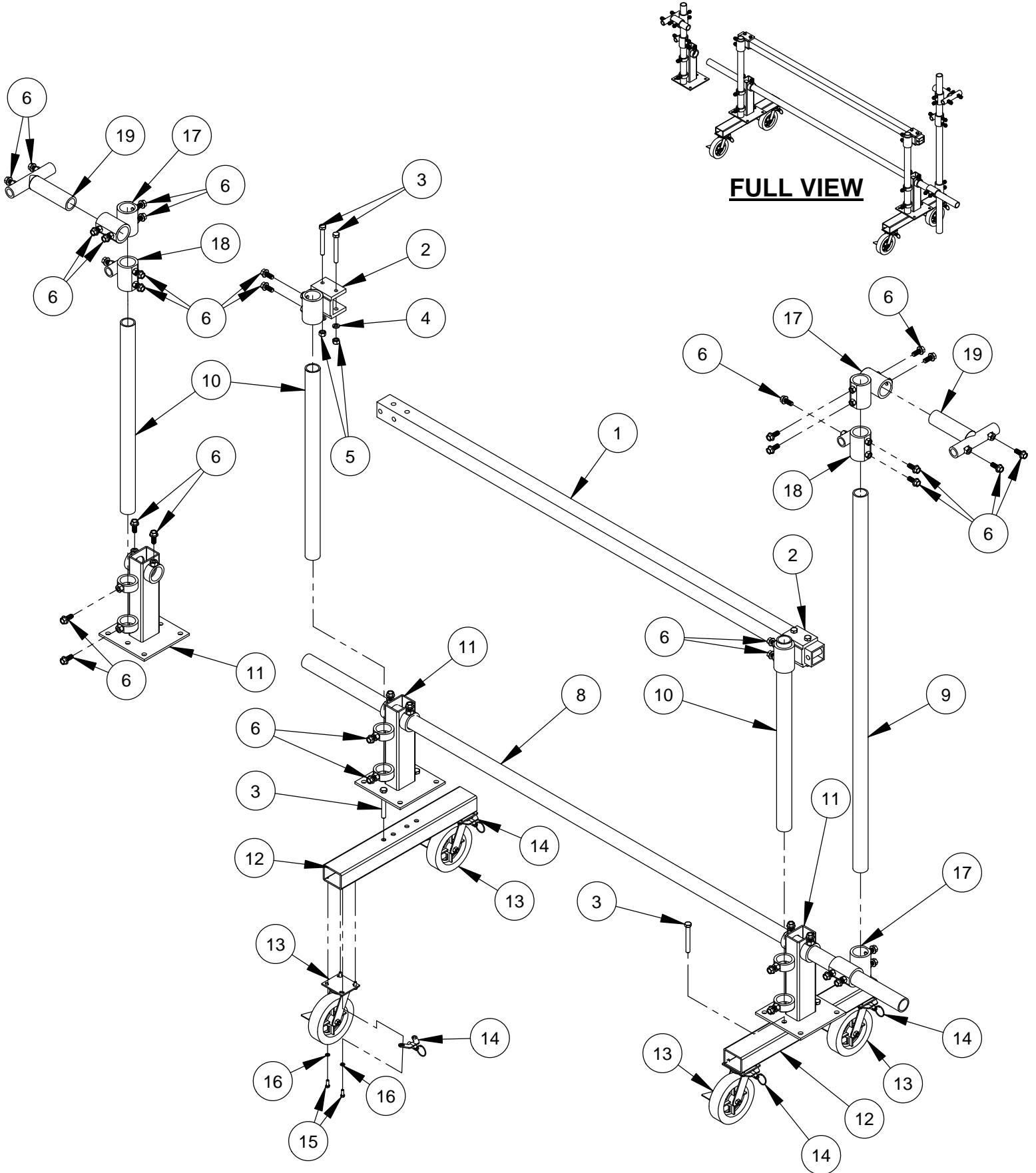
WS25 Wire Saw Assembly #5800669
for use with Control Station



WS25 Wire Saw Assembly #5800669
for use with Control Station

ITEM	PART NO.	QTY.	DESCRIPTION
1	6020019	1	Wire Saw Roller Carriage Assembly
2	2600083	1	Hydraulic Motor, Danfoss OMM32
3	3200109	2	Adapter, 3/8" O-Ring to 3/8" M. Pipe
4	3200102	1	Coupler, 3/8" Q.D.
5	3200103	1	QD Nipple, 3/8"
6	6020013	1	Motor Support Plate
7	2900506	3	Cap Screw, Flat Head, 1/4-28 x 3/4"
8	2900630	2	Cap Screw, Soc. Hd., 5/16-18 X 7/8"
9	2900031	2	Lock Washer, 5/16" Split
10	2900022	2	Flat Washer, 5/16" SAE
11	2500249	1	Sprocket, #35,10 Tooth
12	6020018	1	Chain, #35,68 Pitch Length
13	6020017	1	Sprocket-35BS60 - 3/8" Pitch
14	6010169	1	Key, 1/4" Sq. x 1-1/4"
15	6020123	1	Wire Saw Assembly
16	6020035	2	10" Idler Wheel Assembly
17	6020025	2	16" Idler Wheel Assembly
18	2500211	1	Wrench, 15/16" Open End
19	6020005	1	Drive Wheel Motor Mount
20	4641010	1	Key, 1/2" Sq. x 4" Long
21	2900047	4	Cap Screw, Hex Hd., 3/8-16 x 1-3/4"
22	2900014	4	Flat Washer, 3/8" SAE
23	2900018	4	Locknut, 3/8-16, Nylon
24	2900106	4	Cap Screw, Hex Hd., 1/2-13 x 2"
25	2900026	4	Lock Nut, 1/2-13 Nylon
26	3200094	2	Adapter, 3/4" O-Ring to 3/4" F. Pipe
27	3200036	2	Elbow, 3/4" Male Pipe
28	3200101	1	Nipple, 3/4" Quick Disconnect
29	3200100	1	Coupler, 3/4" Quick Disconnect
30	6020052	1	32" Wire Drive Wheel Assembly
31	2900227	1	Cotter Pin, 1/8" x 2-1/2"
32	6020042	1	36" Wheel Guard Assembly
33	2900073	1	Set Screw, Soc. Hd., 5/16-18 x 5/16"
34	2600084	1	Char-Lynn #110-1083-006
34a	2700604	1	Slotted Hex Nut (Char-Lynn Motor)
34b	2700603	1	Key 7/16" x 1-1/4" (Char-Lynn Motor)

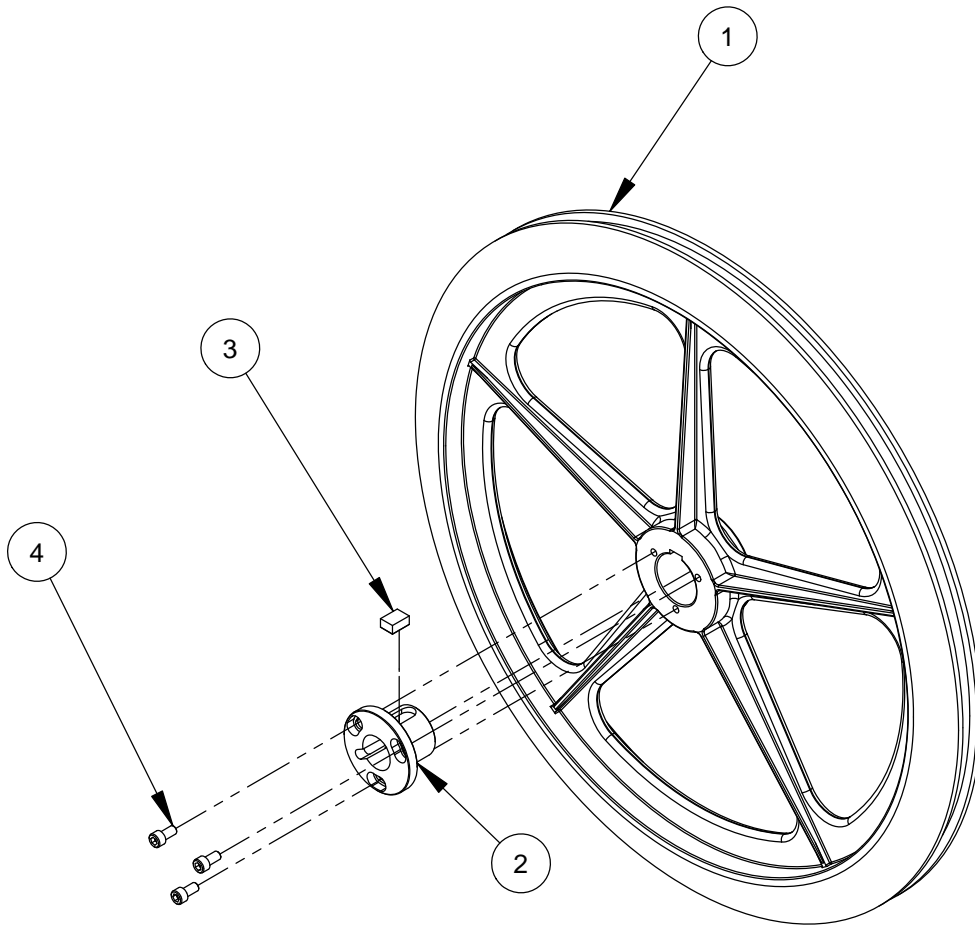
Wire Saw Frame Assembly #6020123



Wire Saw Frame Assembly #6020123

ITEM	PART NO.	QTY.	DESCRIPTION
1	6020006	1	Wire Saw Mast
2	6020001	2	Mast Adapter
3	2900502	8	Cap Screw, Hex Hd., 5/8-11 x 5"
4	2900113	4	Lock Washer, 5/8" Split
5	2900112	4	Hex Nut, 5/8-11
6	2900164	38	Cap Screw, Flange Hd., 5/8-11 x 1-1/2"
7	2900135	4	Lock Nut, 5/8-11 Nylon
8	6020111	1	2" Schedule 80 Pipe x 11'
9	6020112	1	2" Schedule 80 Pipe x 6'
10	6020113	3	2" Schedule 80 Pipe x 3'
11	6020000	3	Pipe Mounting Base
12	6020021	2	Wheel Brace
13	2500263	4	8" Caster
14	2502148	4	Wheel Lock
15	2900005	16	Cap Screw, Hex Hd., 3/8-16 x 1"
16	2900006	16	Lock Washer, 3/8" Split
17	6020002	3	Universal Knuckle
18	6020003	2	Saw Clamp
19	6020004	2	Universal Tee

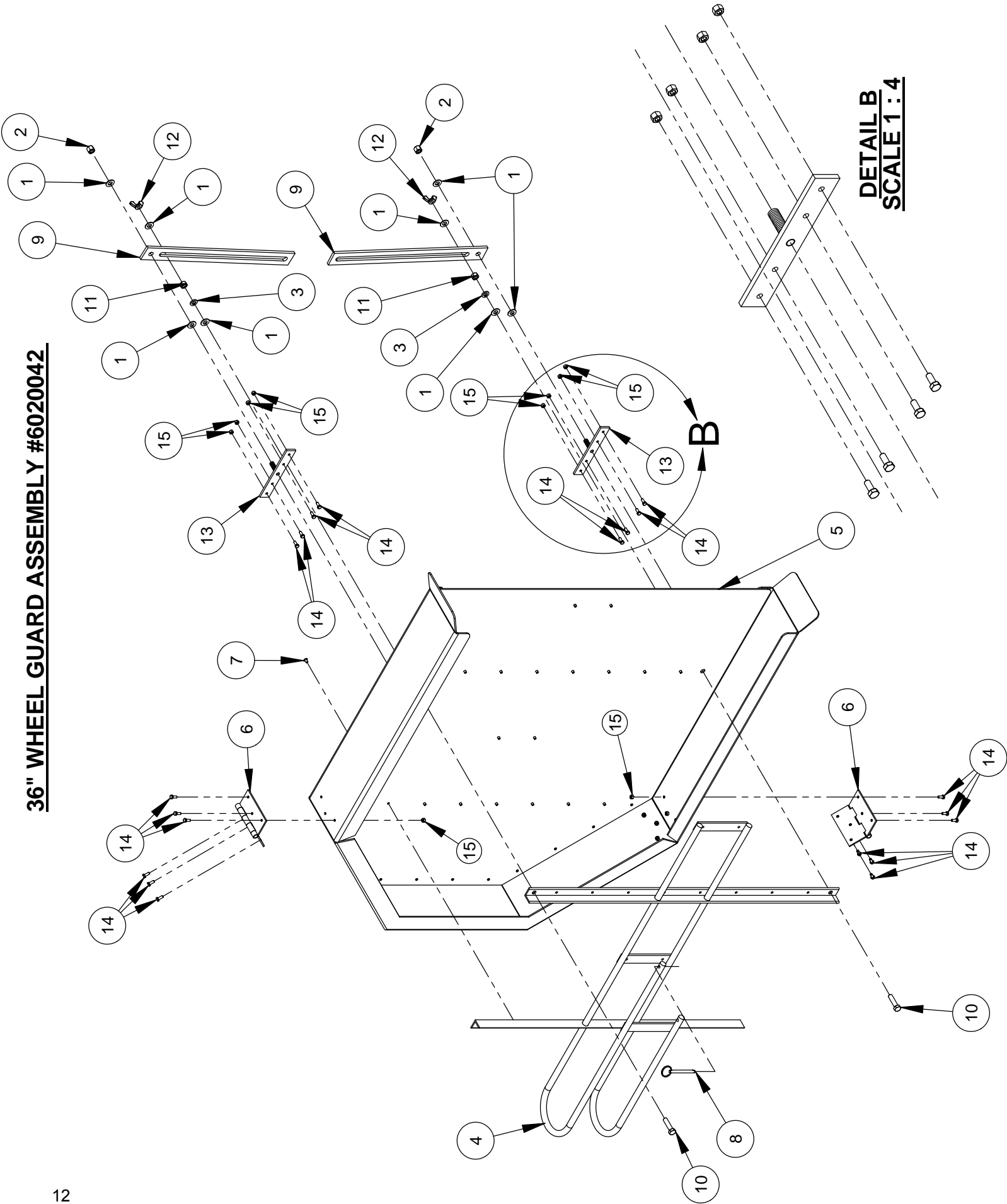
32" Wire Drive Wheel Assembly #6020052



ITEM	PART NO.	QTY.	DESCRIPTION
1	6020056	1	32" Drive Wheel, Modified
2	6020054	1	Adapter Bushing, 32"
3	6020059	1	18 X 11 X 25mm Key
4	2900377	3	Cap Screw, Soc. Hd., M10-1.5 x 20mm

Intentionally Blank

36" WHEEL GUARD ASSEMBLY #6020042

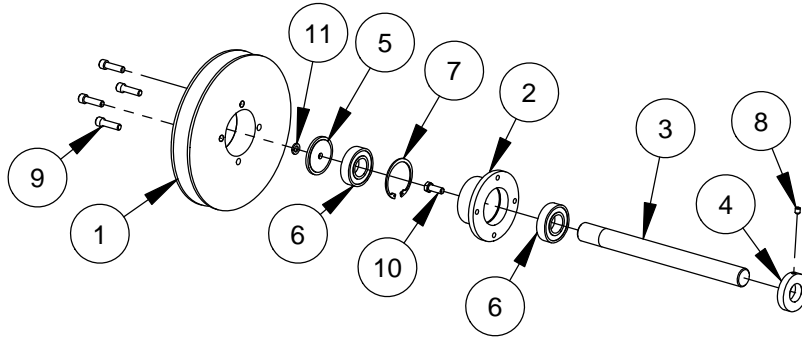


DETAIL B
SCALE 1:4

36" WHEEL GUARD ASSEMBLY #6020042

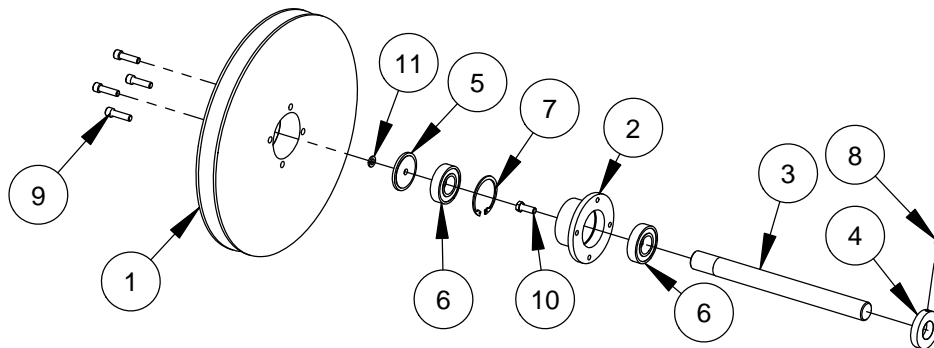
ITEM	PART NO.	QTY.	DESCRIPTION
1	2900014	8	Flat Washer, 3/8" SAE
2	2900018	2	Locknut, 3/8-16, Nylon
3	2900006	2	Lock Washer, 3/8" Split
4	6020043	1	Guard Mount Weldment, 36"
5	2500389	1	36" Wheel Guard
6	6020033	2	Wheel Guard Hinge
7	2900071	32	Rivet, 3/16"
8	2900156	1	Lock Pin with Ring
9	6020044	2	Adjustment Arm, 16-3/4"
10	2900029	2	Cap Screw, Hex Hd., 3/8-16 x 1-1/2"
11	2900033	2	Hex Nut, 3/8-16
12	2900503	2	Wing Nut, 3/8-16
13	6020011	2	Backup Brace Weldment
14	2900339	20	Cap Screw, Hex Hd., M5-0.8 x 12mm
15	2900301	20	Lock Nut, M5-0.8 Nylon Insert

10" Plastic Idler Wheel Assembly #6020035



ITEM	PART NO.	QTY.	DESCRIPTION
1	6020036	1	10" Idler Wheel Disk
2	6020027	1	Idler Wheel Hub
3	6020028	1	Idler Shaft, 13"
4	6020029	1	External Retaining Collar
5	6020030	1	Internal Retaining Plate
6	2500264	2	Ball Bearing, 30mm x 62mm x 16mm
7	2500265	1	Retaining Ring, 62mm Internal
8	2900142	1	Set Screw, Soc. Hd., 5/16-18 x 3/8"
9	2900183	4	Capscrew, Soc Hd., 3/8"-16 X 1-3/8"
10	2900005	1	Cap Screw, Hex Hd., 3/8-16 x 1"
11	2900006	1	Lock Washer, 3/8" Split

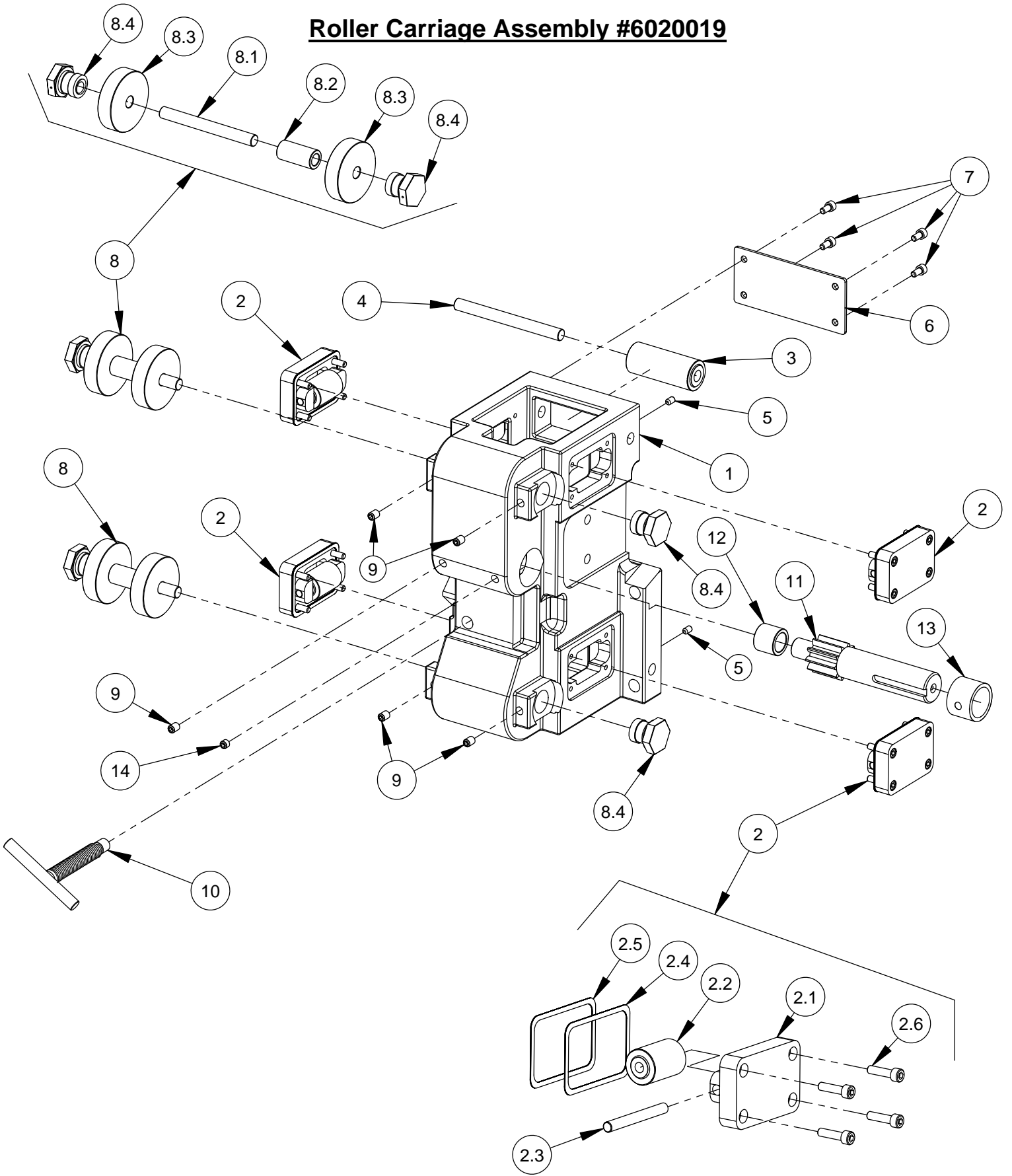
16" Plastic Idler Wheel Assembly #6020025



ITEM	PART NO.	QTY.	DESCRIPTION
1	6020026	1	16" Idler Wheel Disk
2	6020027	1	Idler Wheel Hub
3	6020028	1	Idler Shaft, 13"
4	6020029	1	External Retaining Collar
5	6020030	1	Internal Retaining Plate
6	2500264	2	Ball Bearing, 30mm x 62mm x 16mm
7	2500265	1	Retaining Ring, 62mm Internal
8	2900142	1	Set Screw, Soc. Hd., 5/16-18 x 3/8"
9	2900183	4	Capscrew, Soc Hd., 3/8"-16 X 1-3/8"
10	2900005	1	Cap Screw, Hex Hd., 3/8-16 x 1"
11	2900006	1	Lock Washer, 3/8" Split

Intentionally Blank

Roller Carriage Assembly #6020019



Roller Carriage Assembly #6020019

ITEM	PART NO.	QTY.	DESCRIPTION
1	6020014	1	Wire Saw Roller Carriage
2	4647107	4	Side Roller Assembly (Plastic 7/8" Roller)
2.1	4647102	1	Side Roller Housing
2.2	4647113	1	Side Roller, Plastic
2.3	4647106	1	Side Roller Shaft
2.4	2400011	5	Aluminum Gasket Shim, .005"
2.5	2400054	5	Aluminum Gasket Shim, .003"
2.6	2900116	4	Cap Screw, Soc. Hd., #10-24 x 3/4"
3	4647114	2	Lower Roller (plastic)
4	4647112	2	Lower Roller Shaft
5	2900118	2	Set Screw, Soc. Hd., #10-24 x 5/16"
6	2400009	1	Aluminum Cover Plate
7	2900117	4	Cap Screw, Soc. Hd., #10-24 x 3/8"
8	4647108	2	Adjustable Roller Assembly
8.1	4647120	1	Shaft, Adjustable Roller
8.2	4647121	1	Spacer, Adjustable Roller
8.3	4647115	2	Plastic Roller
8.4	4647122	2	Roller Adjuster
9	2900101	5	Set Screw, Soc. Hd., 1/4-20 x 3/8"
10	4647123	1	Carriage Lock (M-2 Roller Carriage)
11	6020016	1	Pinion Gear
12	2400005	1	Bearing - 5/8" X 7/8" x 3/4"
13	4645026	1	Bushing, 1" x 1-1/4" x 7/8"
14	2900056	1	Set Screw, Soc. Hd., 1/4-20 x 1/4"

EQUIPMENT AND PARTS WARRANTY

Diamond Products warrants all equipment manufactured by it against defects in workmanship or materials for a period of one (1) year from the date of shipment to Customer.

The responsibility of Diamond Products under this Warranty is limited to replacement or repair of defective parts at Diamond Products' Elyria, Ohio factory, or at a point designated by it, of such parts as shall appear to us upon inspection at such parts, to have been defective in material or workmanship, with expense for transportation and labor borne by Customer.

In no event shall Diamond Products be liable for consequential or incidental damages arising out of the failure of any Product to operate properly.

Integral units such as engines, electric motors, batteries, transmissions, etc., are excluded from this Warranty and are subject to the prime manufacturer's warranty.

THIS WARRANTY IS IN LIEU OF ALL OTHER WARRANTIES, EXPRESSED OR IMPLIED, AND ALL SUCH OTHER WARRANTIES ARE HEREBY DISCLAIMED.



333 Prospect Street, Elyria, Ohio 44035
(440) 323-4616 • (800) 321-5336 • Fax (440) 323-8689
www.diamondproducts.com