



CORE DRILLING BOOKLET



Distribution Products
and Accessories You May
Not Know We Have

Diamond Products Limited
333 Prospect St. Elyria, OH 44035 U.S.A.

Quality Is Choice

800-321-5336 - diamondproducts.com

WET CORE DRILLING



Water is required to cool core bits and extend drilling life

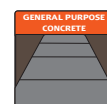
M-1 with CB744

14" Standard Bit Capacity

Features & Benefits:

- 2-1/2" square column (mast) with black oxidized finish
- 6" wheels for easy mobility
- CB744 motor with LED amp meter and on/off switch
- Vacuum pump for quick mounting to flat surface without drilling an anchor hole
- 4 leveling screws on the base
- Slide handle allows for drilling in tight areas
- Combination base changes from vacuum to anchor base

M-1 Complete Combination Rig with CB744 motor (control panel not needed)



HOL

Specifications

HOL- General Purpose, Longer Life

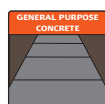
Heavy Duty Orange

Excellent footage and drilling speed. Designed for all types of wet drilling in applications with light to moderate steel. High quality diamond and longer coring life.



Heavy Duty Orange Turbo

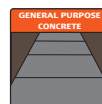
High quality diamond and longer coring life in medium aggregate concrete with moderate steel. Serrated segment for faster coring.



THOWL

Specification

THOWL- General purpose Moderate steel Longer Life



POL

Specifications

POL-General Purpose, Longest Life

Premium Black

VERY HIGH diamond concentration, **Premium Black** gives maximum footage and drilling speed in all types of wet drilling applications. **Good in moderate to high steel applications.** Highest quality diamond and longest coring life



CORE BORE SEGMENT TYPES

Standard Segment

COMMANDER Segment

GREAT WHITE Segment

Turbo Segment

Super Turbo Segment



Profile view of standard straight segment



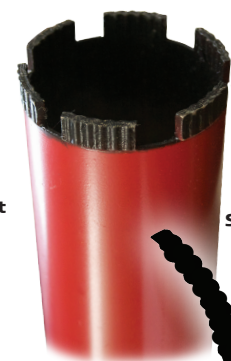
Profile view of Commander segment



Profile view of the 'Shark-Tooth' segment



Serrated segment design for less surface to surface contact



Ribbed segment design for a faster cut saving you time and money

Segment Top View

Segment Top View

WET CORE DRILLING



M-4 Complete Combination Rig with Weka DK12 motor used mounted or hand-held

M-4 with Weka DK12

6" Standard Bit Capacity, 3" (hand-held)

Features & Benefits:

- Great for the general contractor (basic drilling) or plumber (hand-held drilling), electrical or mechanical contractor
- Reversible slide handle (for use on left or right side)
- High strength, hard anodized 1-5/8" x 2" aluminum column
- Top carrying handle
- Quick release motor mount
- Leveling bolts on all model bases
- Combo bases have angle braces for drilling up to 45°

M1AA Portable Rig

6" Bit Capacity

Features & Benefits:

- Single speed-800 RPM
- Spring loaded slide handle for easy coring
- Convenient carrying handle on carriage
- Light weight and portable
- Uses standard power outlets
- Small compact unit for precise coring
- No separate amp meter box
- Includes trap ring that keeps water contained
- Lower cost alternative to larger rigs
- Weighs only 35 lbs.



Bit not included

Weka DK12 Hand-Held Motor

3" Hand-Held Bit Capacity

Electric

WET

Weka® DK12

- 14 amp, 115 volt electric motor
- Thermal overload protection switch
- Side handle for stability
- Water connection for wet coring only
- 5/8"-11 or 1.250"-7 spindle
- Three speed for bits up to 3" (6" mounted)
- Two leveling bubbles for accurate coring
- Can be used mounted on M-3 & M-4
- **Includes:** Plastic molded carrying case, side handle, 1/2" BSP male to 5/8-11 male adapter, wrench



Weka® DK12

CB515



Includes carrying case (not sold separately)

CB515 Hand-Held Motor

3" Hand-Held Bit Capacity

Electric

WET

Features & Benefits:

- 1800 Watt, 115 volt electric motor
- 2-speed gear box (1400 rpm and 2300 rpm) with slip clutch
- Side handle for stable coring
- 1.250-7 threaded spindle with 5/8"-11 adapter
- Water hose connection for wet drilling
- PRCD/GFCI Class I cord
- Works with M-4 stand and hand held motor mounts
- Top bubble level for accuracy
- **Includes:** Plastic molded carrying case, side handle, and wrench

DRY CORE DRILLING

Weka DK13 Hand-Held Motor

3" Hand-Held Bit Capacity

Electric

Features & Benefits:

- 14 amp, 115 volt electric motor
- Thermal overload protection switch
- Side handle for stability
- Dust port and water connection for wet or dry coring
- 5/8"-11 or 1.250"-7 spindle
- Three speed for bits up to 3" (6" mounted)
- Two leveling bubbles for accurate coring
- Can be used on M-3 & M-4
- Includes: Plastic molded carrying case, side handle, 1/2" BSP male to 5/8-11 male adapter, wrench



Dry Vacuum Connection

Weka® DK13



Dry Hole Saw Bits

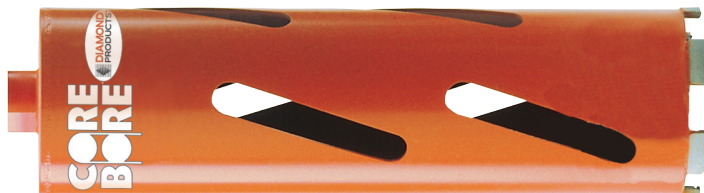
- Air holes in core for cooling
- Light-weight for hand-held motors



Star Blue Dry Hole Saw

Good quality diamond and good coring value

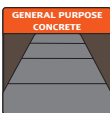
DB-Block and soft brick-not for use on concrete



Heavy Duty Orange Dry Hole Saw

Very high quality diamond and longer coring life

DH-Block and soft brick-not for use on concrete



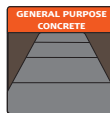
Premium Black Dry Hole Saw

Highest quality diamond and longest life Wider segments with heavier barrel wall to withstand harder brick and prevent segment loss. 9" drilling depth with 1.250"-12 threaded hub.

DP-Brick/block and non-reinforced concrete



Dry bits are used with intermittent cuts allowing air to cool the bit NO WATER NEEDED



Heavy Duty Orange

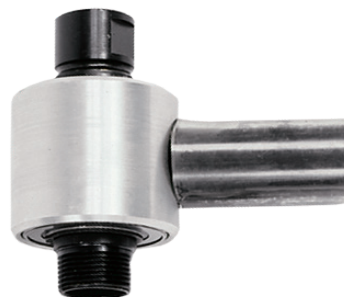
DVH - DRY VACUUM BIT

Very high quality diamond and Longer Life

Dry Vacuum Bit Notes:

- Do not use in applications with steel heavier than wire mesh
- 9" drilling depth with 1.250"-12 threaded hub
- NOT designed for hard aggregate concrete

DVH-Brick/block and non-reinforced concrete



DRY VACUUM BIT ADAPTER USE WITH DVH CORE BORE BITS

For use with a standard shop vacuum to remove dust and debris. Great for use in clean areas where dust control is required.

Weka DK13 to DVH Adapter USE WITH DVH CORE BORE BITS

For use on DK13 (1.250"-7) to DVH Core Bore bits (1.250"-12) non-vacuum attachment



CORING ADAPTERS



- A - Bantum-15 to Bantum Female 5/8"-11
- B - Large Thread, 1.250"-7 to 1.875"-7 Male
- C - 1510, 5/8"-11 Female to 1.250"-7 Male
- D - 1/2" British Standard, 1/2" BSP Male to 1.250"-7 Female
- E - 1015, 1.250"-7 Female to 5/8"-11 Male
- F - 1015-B, 1.250"-7 Female to 5/8"-11 Bolt
- G - Bantum-15, Bantum Female to 1.250"-7 Male



Hilti® QD 6-Slot to 1.250"-7 Male
(DD100, DD200, DD130 w/BU Connection)



1.250"-7 Male to Hilti® Spline
(DD250, DD160, DCM1.5 w/BU Connection)



Spline to 1.250"-7 Male
(DD200)

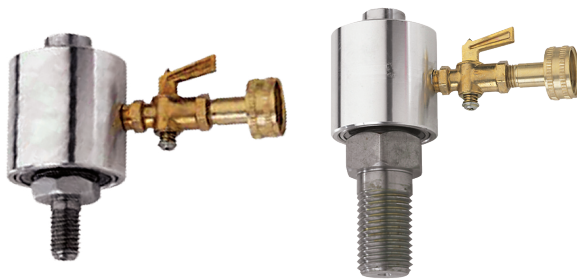


Hilti® QD 6-Slot to 5/8"-11 Male
(DD100, DD200, DD130 w/BU Connection)



5/8"-11 Male to Hilti® Spline
(DD250, DD160, DCM1.5 w/BU Connection)

CORE DRILLING EXTENSIONS



Water Swivel
375 HD
5/8"-11 female to
5/8"-11 male
Part # 4400014

Water Swivel
750 HD
5/8"-11 female to
1.250"-7 male
Part # 4400013



4" Length 6" Length



5/8"-11 1.250"-7

12" Length

5/8"-11 thread = up to 1/2"
bit diameter

1.250"-7 thread = 1-5/8" and
up bit diameter



Hilti® Quick Disconnect Adapter
1.250"-7 Female to Hilti QD

*Hilti® is a registered trademark of the Hilti Corporation
and is not affiliated with Diamond Products Limited.*

1.250"-7
24" Length

CORING ACCESSORIES



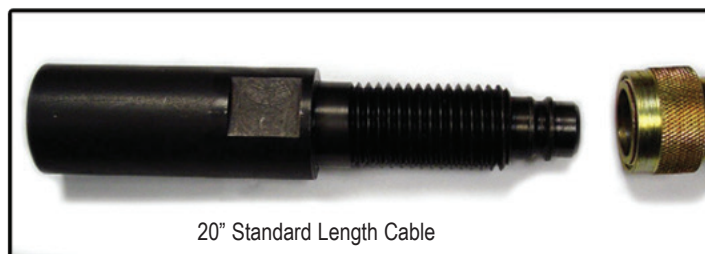
Hole Roughener Tool

Adapter with welded spiked tool for creating a rough surface in a core hole. Useful for providing better adhesion of epoxy anchor systems inside the hole. The spiked end is made up of 6 carbide tips.
Includes 1.250"-7 adapter (welded) Ask about sizes not listed.



Core Catcher Assembly

Attaches to spindle on the top end and an eye-bolt is anchored into the core.
The cable is attached to the eye-bolt or hook.
Includes: Spindle adapter and catcher cable 8" OD x 10" core maximum or 10" OD x 6" core maximum
Cat # 78095



20" Standard Length Cable



The Extractor Core Retrieval Tool

The cable is inserted down the sides of the core. The cable clings to the core as the rings are pulled by hand or lifted by other means. 8" core maximum
Cat # 26386



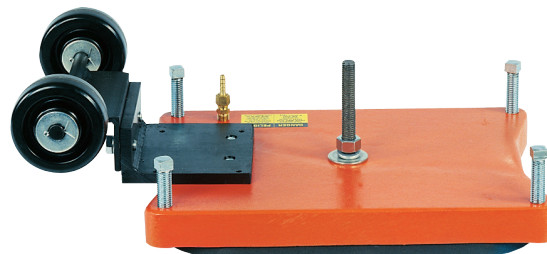
PIPE MOUNT SYSTEM

- Works with any Core Bore rig
- Can be used on any size pipe
- Includes base plate, tie-down strap and hardware
- Bit capacity depends on rig being used



Super Bit Spacer (metal)

Makes it easier to remove bits from the spindle.
Part # 4600502



Vacuum Plate with Wheels

All purpose vacuum base (A.P.V.) that turns your small anchor base into a vacuum base. Up to 6" diameter core bits accepted. Includes: base, vacuum mount, wheel kit and vacuum gasket.
Part # 4247075

CORING ACCESSORIES



BIT BANDIT

- Installs in seconds
- 1-1/4" vacuum port
- Clear polycarbonate for visible coring
- Heavy duty, flexible material to withstand rugged job sites



Bit Sharpening Pot

Plastic bucket that includes a cast iron plate and #60 aluminum oxide sand for sharpening dull core bits. The sand acts as an abrasive to expose the diamonds in the segments.

Part # 4400022



Core Bore Stop Box

Shuts off the electricity to the motor(s) if the core bit hits grounded metal.

Part # 4243050 (115V for 15 amp use)

Part # 4243051 (115 V for 20 amp use)

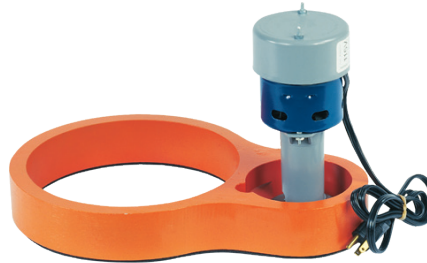


Trap Rings

Helps keep water and slurry contained.

(Different versions for M-1, M-2 and M-4 rigs)
(Max. 3" Diameter Core Bit)

Various sizes available



E-350 Water Collector Ring with Teel Pump

Helps keep water and slurry contained.

(Max. 8" Diameter Core Bit)

Part # 4400015 (115V)

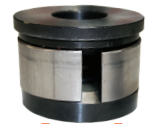
Part # 4400201 (230V)



EZ Cord Adapter

12" long cord for use on CB744, Weka DK32 (110V) Core Drills and C16 Electric Saw.
12AWG - 115V/30 Amp to 15 Amp

Part # 4699131



The expansion ring expands, and tightens against the core barrel, keeping the bit secure.



E-400F Water Pressure Tank with Fittings

Available without fittings. Heavy duty model for Weka motors available. For dust suppression, not wet core drilling.

(3.5 Gallon Capacity)

Part # 4400021 (with fittings)

Part # 2600042 (w/o fittings)

Expansion Adapters

- Expansion adapters are used on open-end core bits instead of welded hubs
- Made up of two threaded plates with expansion ring
- The three pieces are placed in the core barrel and tightened on the drill rig spindle
- The expansion ring expands, and tightens against the core barrel-keeping the bit secure

SPECIALTY CORE BITS



'Pancake' Bits

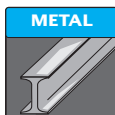
- For use in applications where a hole is needed with a recessed top
- Great for airport runway light canisters
- Most custom sizes and bonds available
- Custom made to your individual application

Other sizes and specifications available-call for more information



Carbide Rebar & Plate Cutters

- Designed to cut through rebar or plate steel after a diamond core bit has drilled through the concrete
- Carbide inserts are brazed into the core barrel. These specialized bits must be used with water to keep the bit cool while drilling in steel
- 10" Standard core length



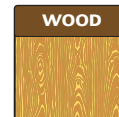
Carbide Wood Bits

- Carbide teeth rip through wood with ease
- 13" core length
- Same core barrel that is used on our diamond core bits
- Air slots in barrel help keep the bit cool
- 1-1/4-7 threaded hub



Aggressive Carbide Teeth

For use on wood materials only. **DO NOT USE ON CONCRETE** or other rock based materials. Warranty is void if used on materials other than wood.



Retractable Carbide Bits

- Used in Offices and buildings where duct work is present
- Carbide bit drills through thin duct work and diamond bit drills through concrete



We Will Re-Tip Your Worn Bit at a 20% Savings to You

Re-segmented Core Bits

- Save money by recycling your used core bits. The bigger the bit, the more you save.
- Send us your used core bits, ours or a competitors, and we will cut off the end and put new segments on it for a bit as good as new.
- Core bits can be re-segmented with most quality grades and bonds provided the tube is suitable.



DIAMOND PRODUCTS™

LIT#0506

Diamond Products Limited
333 Prospect St. Elyria, OH 44035 U.S.A.

Quality Is Choice

800-321-5336 - diamondproducts.com